

**SEM/EDS Analysis Results**  
Instrumental Analyses Laboratory, Faculty of Chemistry  
Nicolaus Copernicus University, Poland

---



Toruń, on 20 December 2010

**GAMET S.A.**  
**Kociewska 22, 87-100 Toruń**  
**Ireneusz Mikołajewski**

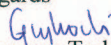
Dear Sir,

further to the order of analysis of 17.12.2010 concerned with determining the nickel and chromium content in sample furniture handles AsepticLine in three coatings, marked WB00R (symbol 4), WB00P (symbol 2) and WB00S (symbol 5), please find enclosed the results.

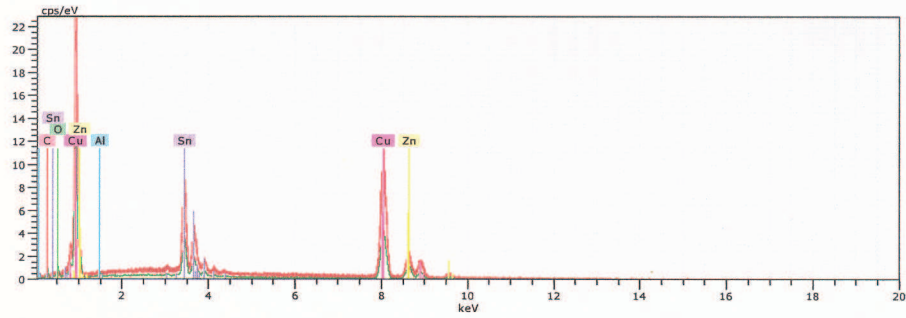
The analysis was performed with an X-ray spectrometer Quantax 200 with an XFlash 4010 detector manufactured by Bruker AXS, operating in a scanning electron microscope LEO 1430VP manufactured by Zeiss.

Under the applied measuring conditions, no nickel and chromium content was found on the surface of the tested samples. The method sensitivity greater than 0.0001 % (1ppm), maximum analysis depth 200 nm.

Regards

  
Grzegorz Trykowski

**Determination of samples AsepticLine WB00R (symbol 4), WB00P (symbol 2) and WB00S (symbol 5)**



5_256x 2032	Date:12/17/2010 9:46:20 AM	HV:20.0kV	Puls th.:12.87kcps
5_256x 2031	Date:12/17/2010 9:45:15 AM	HV:20.0kV	Puls th.:12.87kcps
4_800x 2030	Date:12/17/2010 9:32:07 AM	HV:20.0kV	Puls th.:12.49kcps
4_800x 2029	Date:12/17/2010 9:28:34 AM	HV:20.0kV	Puls th.:13.78kcps
2_20kx 2027	Date:12/17/2010 9:21:21 AM	HV:20.0kV	Puls th.:5.83kcps
2_200x 2026	Date:12/17/2010 9:04:10 AM	HV:20.0kV	Puls th.:5.97kcps

Mass percent (%)

Spectrum	C	O	Al	Cu	Zn	Sn
5_256x 2032	1.54	1.64	-	62.34	14.11	20.38
5_256x 2031	1.43	1.38	-	62.63	14.11	20.45
4_800x 2030	1.49	1.24	-	61.18	15.15	20.94
4_800x 2029	1.20	0.80	-	62.26	14.79	20.95
2_20kx 2027	1.53	2.05	-	58.40	15.89	22.13
2_200x 2026	3.32	6.58	0.91	52.74	18.71	17.75
Mean value:	1.68	2.17	0.13	59.54	15.29	21.18
Sigma:	0.74	1.98	0.34	3.66	1.64	2.39
Sigma mean:	0.28	0.75	0.13	1.38	0.62	0.90

Analysis performed by

*Grzegorz*  
Grzegorz Trykowski, MSc