

VCE-600

VERTICAL MACHINING CENTER



VCE-600

Features & Benefits

- Competitively priced vertical machining centre offering exceptional performance and value.
- High rigidity construction with large Y-axis travel 600mm and generous table size 1,300 x 600 mm.
- Highly reliable 12,000min⁻¹ 18.5 kW, 119.4 Nm with through coolant offering best in class performance.
- 24 tool magazine with optional operator door for tool magazine load/unload.
- New SmoothEz CNC with intuitive 15" touch screen and for ease of operation and fast programming.

VCE-600

Specifications

Spindle (speed/ power/ torque/ shank)	12,000 min ⁻¹ / 18.5 kW/ 119.4 Nm/ CAT-40
Table (length/ width/ max. load)	1,300 / 600 mm / 1,200 kg
Axes travel (X/ Y/ Z)	1,050 / 600 / 600 mm
Rapid traverse (X/ Y/ Z)	36 m/min.
Tool magazine capacity	24
Max tool size (diameter/ length/ weight)	Ø75 (Ø150) / 300 mm / 8 kg
Tool magazine capacity	1.9 sec.
CNC	MAZATROL SmoothEz

MAZATROL SMOOTH^{EZ}

Ez Setup

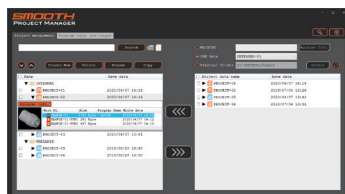
All manufacturing data can be managed by linking to the Smooth Project Manager.

SMOOTH CAM Ai

OPTION



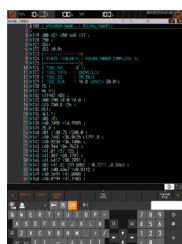
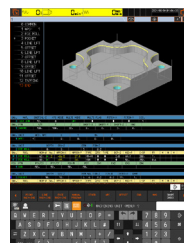
SMOOTH TOOL MANAGEMENT



Ez Machining

Quick MAZATROL

Programs can be easily created and checked by displaying the 3D model of the workpiece.



EIA / ISO

Full EIA/ISO programming functionality offers the very best of both worlds.

Ez Operation

Intuitive 15" touch screen

Touch screen operation (allowing you to operate similar to your smartphone or tablet).



Custom Display

Displayed data position can be changed in the CNC screen for ease of operation.

Data can be checked and set with minimum screen transition by customizing the display according to operation process.

To learn more about the VCE-600, contact your local Mazak sales representative

Mazak

Yamazaki Mazak UK Ltd | Badgeworth Drive | Worcester | WR4 9NF
Tel: 01905 755 755 | mazakeu.com

SCAN TO
DISCOVER
MORE ▶



No app required – just use your smart phone camera