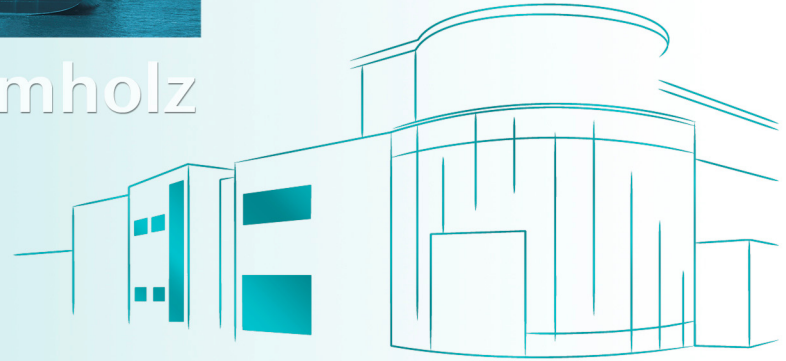




Welcome to Systeme Helmholz

Opening new horizons

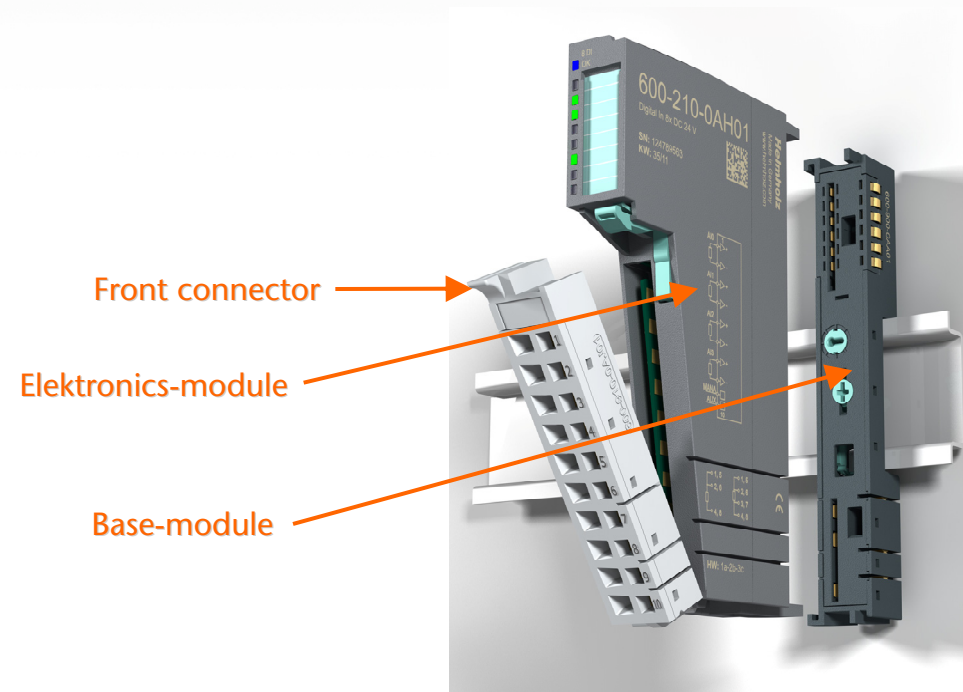
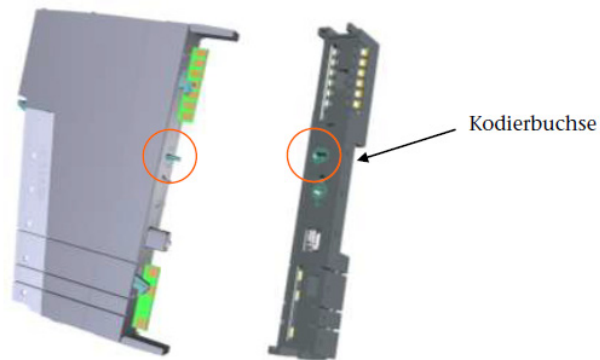
TB20 - distributed I/O System...
See the difference...



The TB20 I/O system...

Module Features

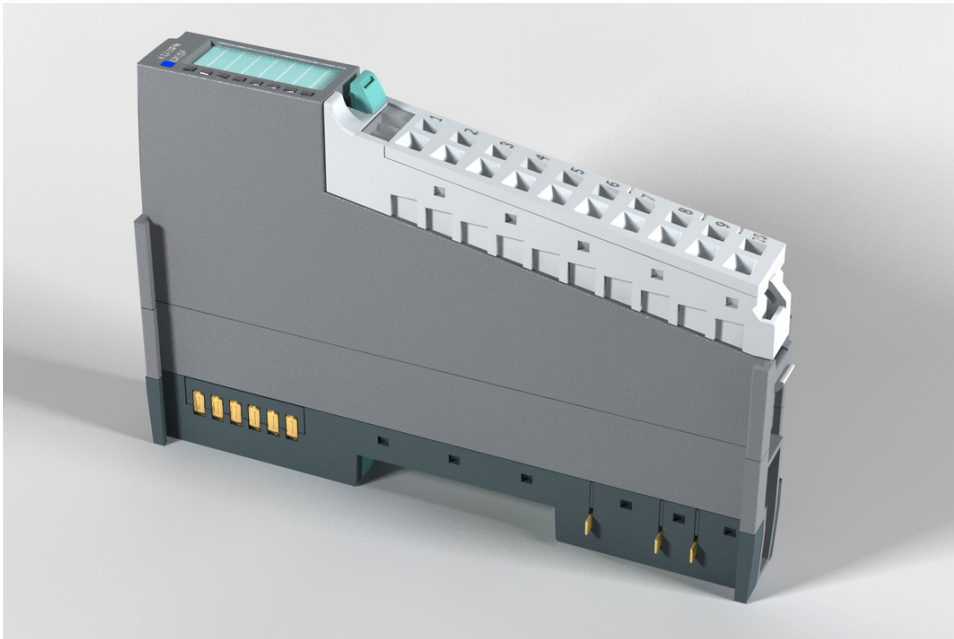
- 3-part module construction, separate base-modules, electronics-modules, front connectors
- Easy „patented“ mounting
- Front connectors with spring contacts
- Module coding avoids erroneous mounting
- Robust industry-style
- Ergonomic handling and compact size
- IP 20



The TB20 I/O system...

Module Features

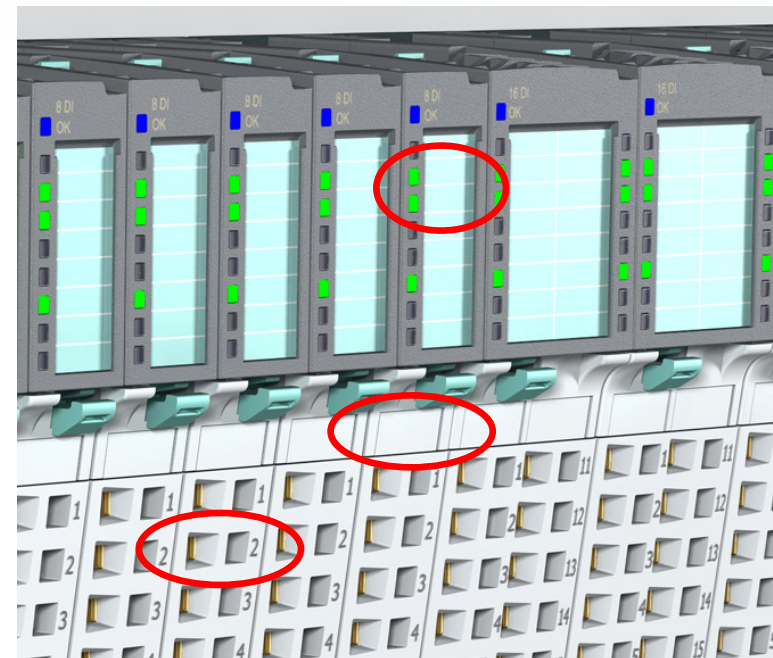
- Optimum module granularity:
 - 2-, 4-, 8-channel modules
 - 16-channel modules with reduced space requirement and cost optimized



The TB20 I/O system...

Module Features

- Clear identification:
 - Direct linking of status LEDs to the clamps
 - Each channel can be identified
 - ID labels for standard printers
 - Front connector labelling easy to read
 - ID clip on the front connector
 - Electronic ID for each module

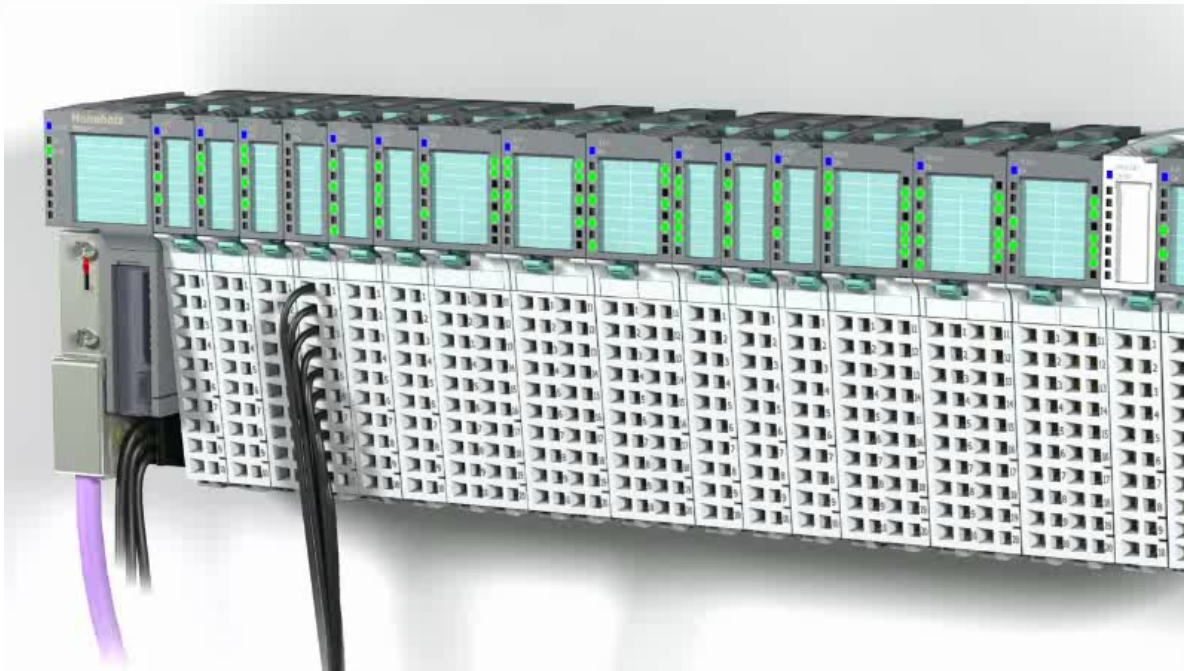


The TB20 I/O system...

Module Features

- Hot-Plug capacity:

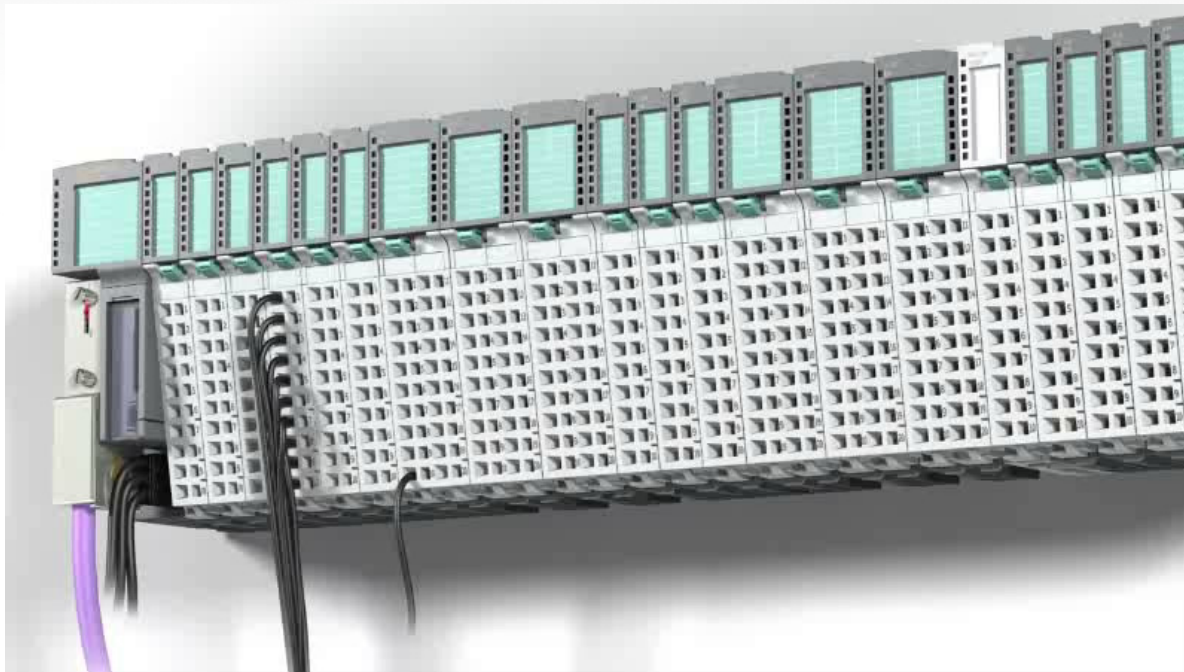
- ➡ Single modules can be exchanged without stopping the system
- ➡ No influence on data exchange
- ➡ Down-times can be thus minimized



The TB20 I/O system...

Module Features

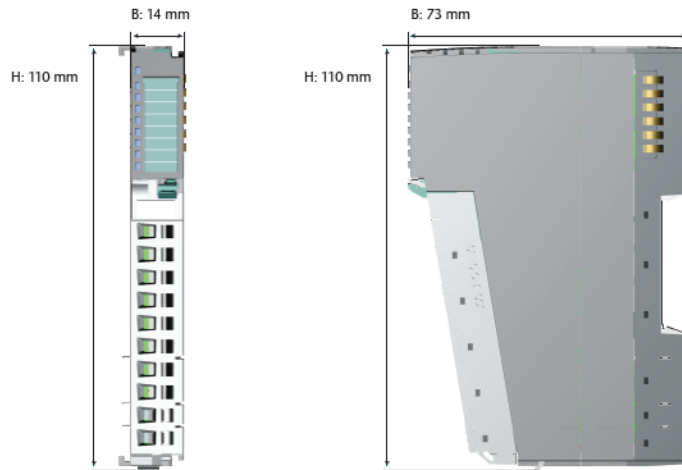
- Freely usable auxiliary contact
 - Additional voltage, mass or screen, according to requirements
 - Reduces necessity for wiring



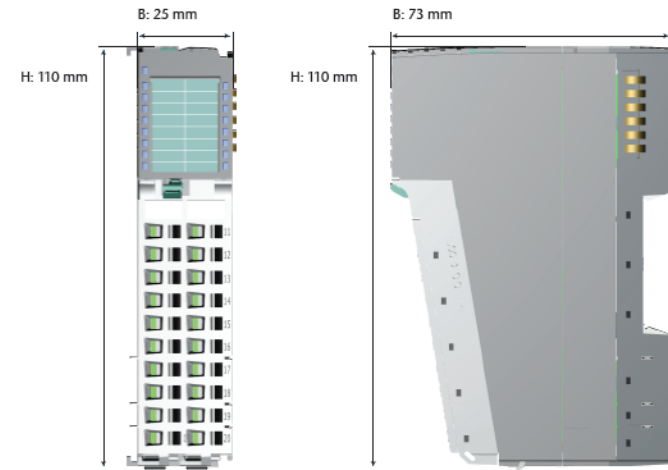
The TB20 I/O system...

Module Features - Size

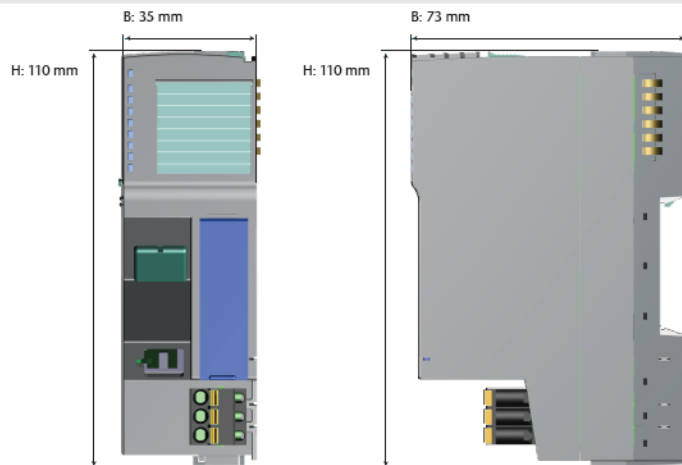
E/A-Modul



Doppel-Modul



Ethernet-Koppler



PROFIBUS-Koppler/CAN-Koppler

