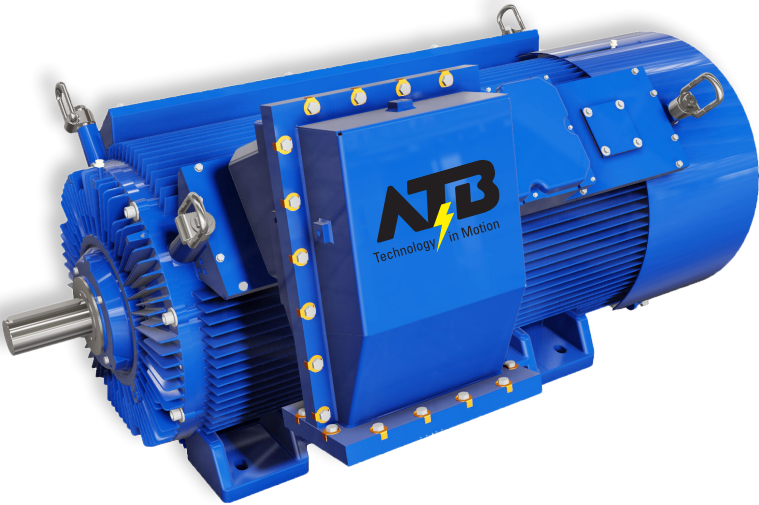
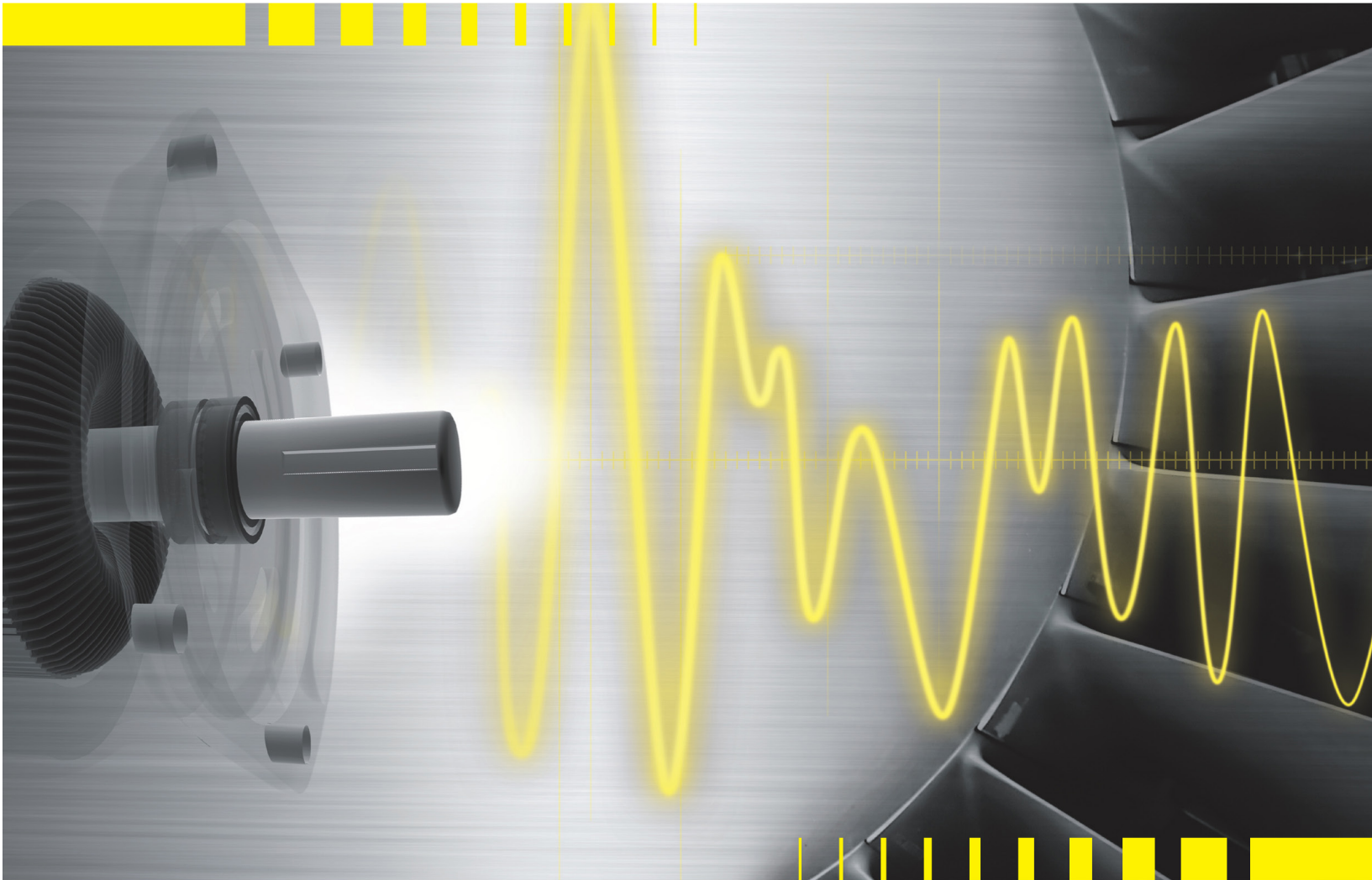


Transnorm Motors Datasheet



Our philosophy

As a competent full-range supplier of bespoke highly efficient electrical drives, we are ready to meet the challenges on a global market.

We find the perfect solution together with our customers and partners for their individual drive applications using our comprehensive development and production competences.

Our product range is as diverse as our customers' needs, leading to highly efficient solutions such as the transnorm motor range.

The transnorm motor range is now upgraded with a IC411 motor family with improved cooling system, providing state of the art performance while committed to our tradition as application expert and development partner.

The highly efficient new motor range has been developed by an international team of ATB specialists bringing together our joint values and expertise and will be produced as new platform on selected sites.

The ATB group represents innovative drive solutions and continually invests in the development of electrical motors and systems to meet the specific requirements of tomorrow.

Characteristics

Performance parameters

- ⚡ Power range from 180 kW - 2,250 kW
- ⚡ High efficiency up to 97.4 %
- ⚡ Comprehensive range of high and low voltage from 2 to 8 poles
- ⚡ IE3 up to 375 kW (acc. EN 60034-30:20129)
- ⚡ Enclosure IP 55 standard, optional up to IP 65

Special attributes

- ⚡ Increased power to weight ratio
- ⚡ Optimized design to maximize performance
- ⚡ Improved cooling system IC 411, IC416
- ⚡ Lower bearing temperature and easy maintenance
- ⚡ Reduced noise level
- ⚡ Multi-position terminal box
- ⚡ Universal mounting position
- ⚡ Easy customization with modular add-on accessories
- ⚡ Suitable for use with inverter drives
- ⚡ Developed with Computational Fluid Dynamics (CFD)
- ⚡ Easy to fit in multiple industrial application and segments
- ⚡ Ex-protection planned
- ⚡ Worldwide product and service support

Technical data

Low-voltage range

Performance parameters							
Frame size	mm	315	355	400	450	500	560
Power range	kW	200-500	450-650	400-800	650-1,150	900-1,500	1,250-2,000
Efficiency	%	96.6	97	97	97.2	97	97.3
Power factor	cos φ	0.88	0.9	0.92	0.89	0.86	0.88
Torque	Nm	3,207	4,161	5,124	7,361	14,397	20,615
Inertia	kgm ²	3.4	11	21.3	52	100	189.2

High-voltage range

Performance parameters							
Frame size	mm	315	355	400	450	500	560
Power range	kW	180-400	225-600	355-800	560-1,120	710-1,600	1,250-2,250
Efficiency	%	95.3	96.3	96.8	97	97.4	97.1
Power factor	cos φ	0.89	0.84	0.88	0.89	0.9	0.89
Torque	Nm	1,283	3,843	5,127	7,168	10,220	14,381
Inertia	kgm ²	3.3	10.9	21	41.9	100.7	177

Further frame sizes on request

	Low-voltage range	High-voltage range
Voltage	400/690 V	3,6/6/11 kV
Power	200-2,000 kW	180-2,250 kW
Frequency	50/60 Hz	50/60 Hz
Motor type	asynchronous motor with cage rotor	
Starting	direct duty type S1	
Class of insulation	155 (F); 180 (H)	
Temperature rise class	155 (F) / 130 (B) *	
Degree of protection	IP 55	
Degree of protection of terminal box	IP 65	
Method of cooling	IC 411, IC 416	
Type of construction	IMB3, IMV1	
Ambient temperature	-20°C up to 40°C	
Altitude	up to 1,000 m above sea level	

* Inverter drive motor 155 (F)

Subject to modifications

Contacts

ATB Holding

ATB Austria Antriebstechnik AG
Donau-City-Straße 6/15a
1220 Vienna
Austria
Phone: +43 1 90 250 0
Fax: +43 1 90 250 110
E-mail: info@atb-motors.com
<http://www.atb-motors.com>

Production facilities

ATB Spielberg
ATB Spielberg GmbH
G.-Bauknecht-Str. 1
8724 Spielberg
Austria
Phone: +43 3577 757 0
Fax: +43 3577 757 180
E-mail: info@atb-motors.com

ATB Welzheim
ATB Welzheim GmbH
Silcherstr. 74
73642 Welzheim
Germany
Phone: +49 7182 14 1
Fax: +49 7182 14 590
E-mail: info@de.atb-motors.com

ATB Schorch
ATB Schorch GmbH
Breite Straße 131
41238 Mönchengladbach
Germany
Phone: +49 2166 925 0
Fax: +49 2166 925 100
E-mail: mail@schorch.de

ATB Nordenham
ATB Nordenham GmbH
Helgoländer Damm 75
26954 Nordenham
Germany
Phone: +49 4731 365 0
Fax: +49 4731 365 159
E-mail: info@atb-nordenham.de

ATB Morley
ATB Morley Ltd.
Ruskin Street
Stanningley, Leeds,
West Yorkshire LS28 6QA
United Kingdom
Phone: +44 113 257 1734
Fax: +44 113 257 0751
E-mail: sales@uk.atb-motors.com

ATB Laurence Scott
ATB Laurence Scott Ltd.
Hardy Road
Norwich, Norfolk NR1 1JD
United Kingdom
Phone: +44 1603 628 333
Fax: +44 1603 610 604
E-mail: hvm.sales@laurence-scott.com

ATB Special Products
ATB Special Products Ltd.
Unit 11 Waterfall Lane Trading Estate
Cradley Heath
West Midlands B64 6PU
United Kingdom
Phone: +44 121 698 3100
Fax: +44 121 698 3160
E-mail: spsales@atb-sp.com

ATB Tamel
ATB Tamel S.A.
Ul. Elektryczna 6
33100 Tarnow
Poland
Phone: +48 14 632 11 00
Fax: +48 14 632 11 02
E-mail: office.tamel@tamel.pl

ATB Sever
ATB Sever d.o.o.
Magnetna polja 6
24000 Subotica
Serbia
Phone: +381 24 665 100
Fax: +381 24 546 893
E-mail: sever@rs.atb-motors.com

ATB Fod
ATB FOD d.o.o.
Djordja Vajferta 16
19210 Bor
Serbia
Phone: +381 30 424 147
Fax: +381 30 427 649
E-mail: fod@rs.atb-motors.com

ATB Wuhan
ATB Motors (Wuhan) Co., Ltd.
No.1, Canglongdao Science Park,
Jiangxia District
430205 Wuhan
China
Phone: +86 27 87 99 3001
Fax: +86 27 87 99 3002
E-mail: atbwhsales@wolong.com

Branch offices

ATB Motors
ATB Motors B.V.
Tasveld 14
8271 RW IJsselmuiden
Netherlands
Phone: +31 38 443 2110
Fax: +31 38 443 2111
E-mail: sales@atb-motors.com

ATB Shanghai
ATB Motors (Shanghai) Co., Ltd.
25F, NO. 66 North Shaanxi Road
200041 Shanghai
China
Phone: +86 21 6288 6815
Fax: +86 21 6288 5355
E-mail: info@atb-motors.cn

ATB Moscow
ATB Rus LCC
Nauchny proezd 8/1, office 408
117246 Moscow
Russia
Phone: +7 495 545 45 99
Fax: +7 495 545 45 99
E-mail: sales@ru.atb-motors.com

Equity interests

Brook Crompton UK
Brook Crompton UK Ltd.
St. Thomas Road
Huddersfield HD1 3LJ, West Yorkshire
United Kingdom
Phone: +44 1484 557 200
Fax: +44 1484 557 201
E-mail: csc@brookcrompton.com

Brook Crompton Asia Pacific
Brook Crompton Asia Pacific Pte., Ltd.
100 Cecil Street, # 07-01/02 The Globe
069532 Singapore
Singapore
Phone: +65 6227 0308 126
Fax: +65 6227 0605
E-mail: wegen@linjacob.com

Brook Crompton USA & Canada
Brook Crompton Ltd.
264 Attwell Drive
M9W 5B2 Toronto
Canada
Phone: +1 800 463 8917
E-mail: sales@brookcromptonna.com

ATB SPIELBERG

ATB WELZHEIM

ATB NORDENHAM

SCHORCH

ATB SEVER

ATB FOD

ATB MORLEY

**ATB LAURENCE
SCOTT**

**ATB SPECIAL
PRODUCTS**

Tamel S.A.

ATB WUHAN
Technology in Motion

**BROOK
CROMPTON**

WOLONG 卧龙