

## Why to go?

### Reliable and continuous support and assistance

ATO5 is part of our service and customer benefit philosophy. Over and above the functional product benefits, we offer our customers close partnerships and continuous support throughout the life cycle of our products – from start to finish. ATO5 is a further illustration of this.

We know your industry and requirements, which is why we understand the importance of speed, flexibility and operational reliability.

We're constantly looking for new ways of anticipating your needs and giving you innovative solutions. We're at your side, each and every day. We're proactive and think ahead.



## What about individual requirements?

### ET015

We know that many gear units need customer-specific modifications such as special output shafts, double keys or special sensor technology. Here, too, you'll be able to cast aside your worries – from March 1st, 2021, we'll be delivering these gear units ex works in 15 working days from ordering. Our ET015 to go range also meets market needs of this kind within extremely short delivery times.

### We call this ET015 (Engineer to order) to go.

As you can see, we're continually thinking about how we can become even better, faster and more flexible for you.

29281156 / 1220



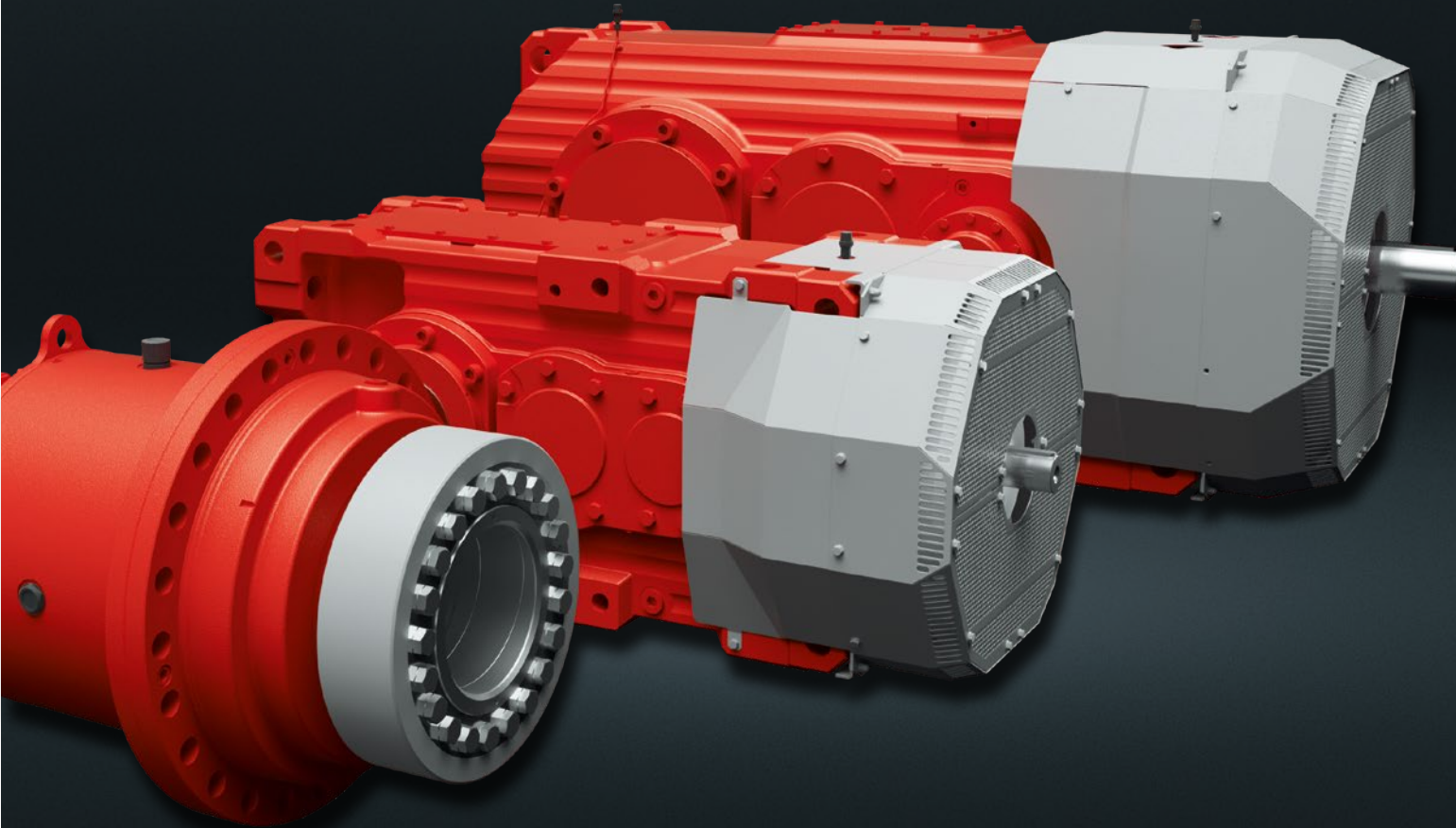
SEW-EURODRIVE GmbH & Co KG  
Ernst-Blickle-Str. 42  
76646 Bruchsal/Germany  
Tel. +49 7251 75-0  
Fax +49 7251 75-1970  
sew@sew-eurodrive.com

→ [www.sew-eurodrive.com](http://www.sew-eurodrive.com)

# INDUSTRIAL GEAR UNITS TO



**Ordered, built, packed, to go!**  
Industrial gear units dispatched in 5 working days.





## Good news for anyone in a hurry

Whether you work in design, procurement or maintenance, we now deliver our industrial gear units to you even faster. Our ATO5 to go range for shorter delivery times makes this possible. All our ATO5 industrial gear units from the tried-and-tested SEW-EURODRIVE modular system leave our plant for large gear units in Germany just 5 working days after your order. It doesn't get faster than that! Except in an emergency, when your ATO5 industrial gear unit will be on its way to you after just one working day.

# 5 days to go

## Assemble-To-Order: Industrial gear units ready to deliver in 5 days!

Standard Generation X.e helical and bevel-helical gear units are available as ATO5 products up to 175 kNm, while standard P series planetary gear units are available as ATO5 products up to 360 kNm – with almost all options.

In the event of machine downtime, you get all these gear units within just 24h ex works! Flexibility and operational reliability for anyone in a hurry.

## How do you benefit from our industrial gear units to go?

### Are you a designer?

- You gain more time for better planning.
- You can configure your system at your own pace with our gear units and then place your order.
- You can focus on the key design aspects.
- You can implement projects faster, thanks to defined ATO5 parameters.



### Are you a buyer?

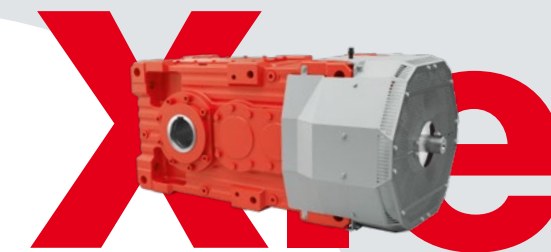
- You can order the gear units when your design is finished, thus eliminating the changes that are so commonplace these days and the associated additional outlay.
- You gain more flexibility thanks to fast delivery.
- You focus on the items with really long lead times and order the gear unit at your leisure at the end of the process.



### Are you a maintenance engineer?

- You benefit from greater operational reliability for your system, as our ATO5 industrial gear units leave our plant just one day after your order.
- You no longer need to store replacement gear units or components.
- You reduce your storage needs and costs. The short delivery times mean that we are your warehouse.
- You gain more flexibility and cut your planning workload for preventive maintenance.

## Our industrial gear units to go – the details



### X.e gear units

- Helical and bevel-helical gear units, 6.8 to 175 kNm
- Gear ratios from 7 to 350
- Solid shaft with/without key
- Hollow shaft with groove or shrink disk

#### Options

- All sealing systems
- Splash or bath lubrication with oil expansion tank
- Torque arm
- Backstop
- IEC motor adapter
- Fan



### P gear units

- Planetary gearmotors, 25 to 360 kNm
- Gear ratios from 100 to 3500
- Motor voltages 230/400 and 400/690 V, without brakes or encoders
- Solid shaft with key
- Hollow shaft with shrink disk

#### Options

- All sealing systems
- Splash or bath lubrication with oil expansion tank
- Torque arm

**More about industrial gear units to go:**  
[www.sew-eurodrive.de/en/ato5](http://www.sew-eurodrive.de/en/ato5)