




See this Machine
in action on
YouTube 



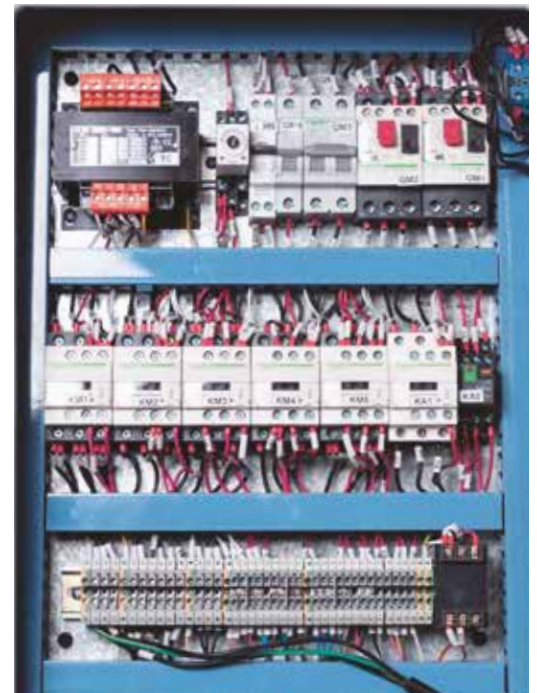
Basic 180 Super

- cast-iron bed, heavily ribbed
- all box ways are induction-hardened and precision-ground
- headstock with D1-4' mount, bore diam. 38 mm, run in 2 adjustable tapered roller bearings
- all gears are made of Cr-Ni steel, hardened, precision-ground, with oil-bath lubrication
- tailstock can be moved ± 10 mm for taper turning
- powerful main drive (2.4 kW), including base frame
- guides are adjustable via tapered gibs
- test certificate in accordance with DIN
- including 3-axis position indicator, fully assembled

3-axis position indicator

- more accuracy
- lower error rate
- increased productivity
- resulting in valuable time savings

- for increased productivity
- easy to read display
- operator-specific features
- convenient keyboard layout
- resolution: 0.01/ 0.005 mm
- default coordinates
- axis position is maintained when display is turned off
- hole circle pattern calculation
- calculator function
- storage for 10 tools
- radius / diameter toggle
- mm/inch conversion
- easy expansion and maintenance-free operation
- display for top (Z0) and box way slide (Z1) both separate and in differential / cumulative mode for lathes



Select the optimum spindle speed for the Basic 180 Super via its 16-step main drive

Specifications

Basic 180 Super

Working area	
Center width	mm 1.000
Turning diameter over bed	mm 356
Turning-Ø over support	mm 220
Turning diameter over gap bridge	mm 506
Gap bridge length	mm 206
Bed width	mm 206
Travels	
Travel X-axis	mm 178
Travel Z1-axis	mm 92
Swing range of top slide	± 50°
Headstock	
Spindle speed	1/min (16) 45 - 1.800
Spindle bore	mm 38
Spindle mount	Camlock D1-4
Spindle taper	MT 5
Feed	
Feed X-axis	mm/R 0,015 - 0,22
Feed Z-axis	mm/R 0,043 - 0,653
Tapping	
Tapping, metric	(37) 0,4-7 mm
Tapping, whithworth	TPI (28) 4-56
Tailstock	
Tailstock quill diameter	mm 45
Tailstock taper	MT 3
Tailstock quill stroke	mm 120
Tailstock traverse adjustment	mm ± 10
Drive capacity	
Motor rating main drive	kW 2,4
Main drive, continuous load	kW 1,5
Measures and weights	
Overall dimensions (length x width x height)	m 1,95x0,79x1,2
Weight	kg 880
Part No.	300805

Standard Equipment

3-axis position indicator, 3-jaw chuck Ø 160 mm, 4-jaw face plate chuck Ø 200 mm, face plate Ø 320 mm, quick change tool holder head WE, quick change tool holder WED 20100, steady and follow rests, coolant system, chip tray, fixed splash guard (wall), chuck guard, foot brake pedal, base, LED work lamp, micrometer longitudinal stop, change gears, reducing sleeves, dead center, thread gauge, operating tools, operator instructions

Options

Part No.

• 4-Jaw Lathe Chuck Steel 200 mm	116601
• Live Center MT 3	106750
• Oscillation Element LK 3	103330

For additional options for this machine, visit our website.