

# WIN - Wireless Information Network



Raise your productivity and save costs with wireless monitoring

# Centralised wireless machine monitoring



The centralised monitoring of machines beyond visual range enables faults and downtimes to be immediately identified.

## Keep an eye on your shop floor

Do you want a simple MDA (Machine Data Acquisition) system without expensive acquisition costs and wiring?

WERMA now offers a simple solution for the remote **wireless monitoring** of machinery utilising the information provided by the signal towers. The system is simple to install and requires no expert knowledge of MDA environments.

With WIN, the "Wireless Information Network", you can

- monitor your machines,
- react quickly and safely in the event of malfunctions,
- save costs,
- improve the productivity and efficiency of your machines

## Machine monitoring with WIN - Wireless Information Network

With WIN you can **monitor up to fifty machines** of different ages and functions, either temporarily or **permanently** for example injection moulding machines, pick-and-place-machines and automatic assembly lines. WIN provides both a central overview of your machinery **via wireless technology** as well as valuable analysis capabilities. With our "WIN complete" kit as many as three machines can be monitored for less than 1,000 Euros.

WIN is installed via **"Plug & Play"**. No additional wiring is needed as your existing WERMA signal towers can be used. Radio transmitters (WIN slaves) are integrated into the towers, which then send radio signals to the small receiver (WIN master). The master is connected to the PC via a USB cable. Using the supplied software the status of the **signal towers** integrated into the system can be monitored on screen **at a single glance**.



WIN enables you to keep an eye on up to fifty different machines - simply by transmitting the information from your signal towers to your PC.



The network can be significantly extended with the addition of further "WIN slaves".

## Large transmission range - covers even distant machines

The unobstructed transmission range of **WIN extends up to 300 meters**. The indoor transmission range - as with all radio devices - may be less depending on the characteristics of the building. It is precisely here that WIN displays its strengths: WIN's low frequency band (868 MHz) **penetrates objects and walls significantly better** than WLAN and Bluetooth (frequency band 2400 MHz).

Each "WIN slave" within your network simultaneously functions as a "repeater", transmitting the signal received from other slaves to the master. This enables you to **increase the transmission range** and effortlessly monitor **machines at greater distances**.

WIN also functions **smoothly and interference-free alongside other wireless applications** thanks to its use of the 868 MHz frequency band, a different band to that used by WLAN or Bluetooth.

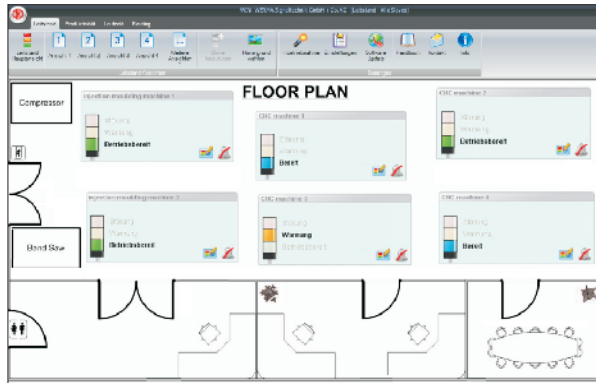


## Quick and easy installation

The software can be installed **without any programming knowledge**. The CD starts automatically and guides you through the set-up of your own network, **step by step**.

The programme also indicates the **quality of your wireless connections** - so that you can tell where connections need to be supplemented with additional WIN slaves (=Repeaters), ensuring the reliable functioning of your network and the smooth transmission of data.

## Centralised PC monitoring and analysis of machine states



How are my machines running? The **control station** screen displays the **status** of your machines, here with **integrated floor plan**.

With the WIN software, you can have a complete overview of your machinery **from one or more PCs**. As the user, you can decide which machine data is to be monitored and evaluated - what you see on the computer screen is precisely what your signal towers indicate. A **simple display interface** enables intuitive operation.

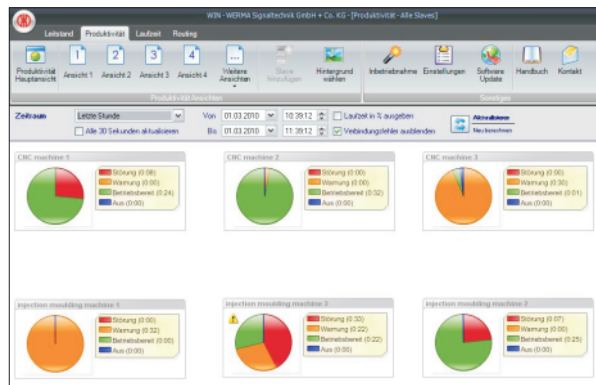
## Quick reaction from the control station

With one glance at the software's **control station** module you can see **which machines are currently running, are stationary or malfunctioning**. This enables you to respond immediately, effectively shortening reaction and downtimes. In addition your **building floor plan** can be **easily integrated** into the overview, immediately indicating the location of your machines.

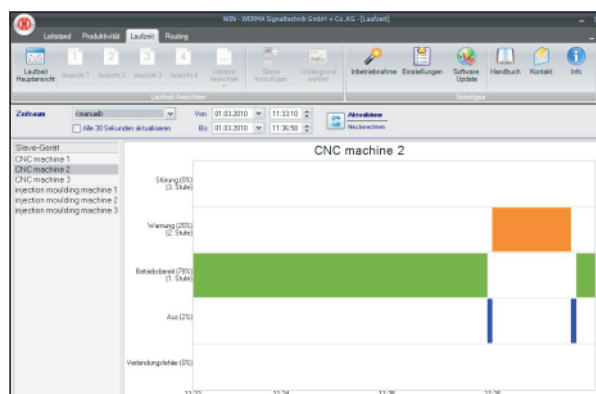
## Identify error patterns and increase machine efficiency

Daily, weekly, monthly and annual data or data from any desired period can be **quickly and retrospectively analysed**. With the productivity and running time modules you can systematically search for errors and thus raise the efficiency of your machines.

With WIN you can also be informed of the status of your machine per **e-mail**, various settings can be used to determine who is to be informed and after which time interval.



How productive are my machines? With the productivity module you can see the **capacity utilisation** of your machinery.



When do malfunctions occur? In the running time module you can analyse **error patterns according to the time period**, thus helping to eliminate the causes.



You can view several modules simultaneously on one screen.

## WIN provides you with the following advantages

- Economical MDA system - can be retrofitted at any time
- Large wireless transmission range of up to 300 m more than WLAN or Bluetooth
- No interference with WLAN or Bluetooth
- Monitoring of up to 50 different machines
- Monitoring and analysis possible from a number of PCs
- No expert knowledge or programming experience needed
- No complex machine interface needed
- No additional wiring
- Notice of status change also via E-mail

## What customers say about WIN

"There is actually only one word: This thing is **super!** It is **economical**. The **price-performance ratio** is **excellent**. The **software** is **simple**. I have a transparent production process, I can see the capacity utilisation etc. It is **great** that WIN **can be retrofitted**. With other systems I have to buy everything at once. This is very expensive. With WERMA it's different: Each month, if I have 100 or 200 € left over, I can monitor an additional machine. We started with three machines and now we want to expand the system."

Volker Villing, Production Manager at "Neugart Spritzgießtechnik Formenbau", D-78554 Aldingen



Villing employs WIN in the production process.



### Two product kits

#### All inclusive kit "WIN complete" for KombiSIGN 71



"WIN complete" contains everything you need to immediately start wirelessly monitoring three machines (assembly without laptop).

##### Assembly:

- 3 ready to use KombiSIGN 71 signal towers (LED permanent light elements in red, yellow, green, terminal element, base with integrated tube)
- 3 WIN slaves (pre-configured + integrated in the signal towers)
- WIN master (radio receiver)
- USB cable
- Software CD

#### More choice: "WIN system" for KombiSIGN 70 + 71



For all current users of WERMA signal towers or those who intend to configure their own signal towers: With "WIN system" slaves can be simply integrated into the signal towers (assembly without laptop).

##### Assembly:

- 3 WIN slaves (pre-configured)
- WIN master (radio receiver)
- USB cable
- Software CD



### Order specification:

WIN complete for KombiSIGN 71	860 640 03
To expand the network to up to 50 slaves: WIN slave for KombiSIGN 71	860 640 02



### Order specification:

WIN system for KombiSIGN 70	860 840 01
WIN system for KombiSIGN 71	860 640 01
To expand the network to up to 50 slaves: WIN slave for KombiSIGN 70	860 840 02
WIN slave for KombiSIGN 71	860 640 02

Order easily online in our **E-shop**, via **E-mail**, or **fax**.

Any further questions? Our team is happy to provide assistance on **technical matters**. You can reach our **hotline** on **+49 (0) 7424-9557-222**.