



Suspension System CS-3000

Flexible, easy to assemble, ergonomic

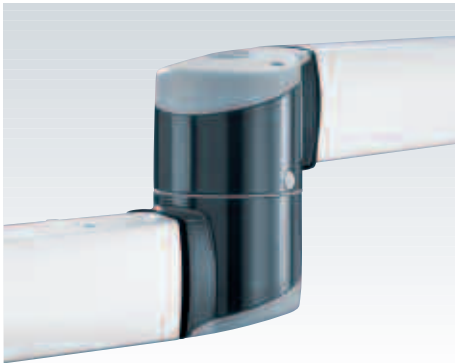
New flexibility in operation and appearance: the Bernstein CS-3000

Variability in system configuration, advanced design and absolute ease of assembly are the main requirements of system builders when specifying control enclosure suspension systems. Bernstein have set new standards here with the new CS-3000: A modern industrial design, excellent ergonomics and multiple component combinations create an innovative system solution on a modular principle.

- Long service life and safe operation thanks to anodised aluminium tubes
- Clean lines, thanks to smooth transitions between the tube and system components (very easy to clean/photo 1)
- Coated tube fastening screws for sealing the thread holes and secure connections
- Relative appearance and connection of narrow profiles thanks to the possibility of reducing the cross section from square to round tube
- Modular upgrading of the couplings possible (also subsequently), e.g. with adapter for narrow housing or angle adapter
- Protection IP 65
- Well designed ergonomics for simple and virtually fatigue free operation
- An ideal solution from a single source with Bernstein control housings

Thanks to the particularly easy way the CS-3000 components combine, assembly is quick and simple, which for the system builder means great time savings and cost reductions:

- In addition to the 'clamping' connection of the tube fastening screws: Sixfold positive connection is achieved via component design in the tube attachment area (optional additional safety screw for vertical mounting is not required/photo 2)
- One person can install the complete system
- Stepless adjustment of system alignment by means of the tube fastening screws
- Readjustment possible at any time without disassembling the complete system (photo 3)
- Cable and assembly access covers on all deflection points in the system
- Tubes machined at one end so that users can cut to required length (machining templates supplied)
- Different tube lengths offer the possibility of variability in assembly
- Variable torque (stiffness) of all rotating components (coarse and fine adjustment)



Smooth combination through an intelligent design for easy-cleaning



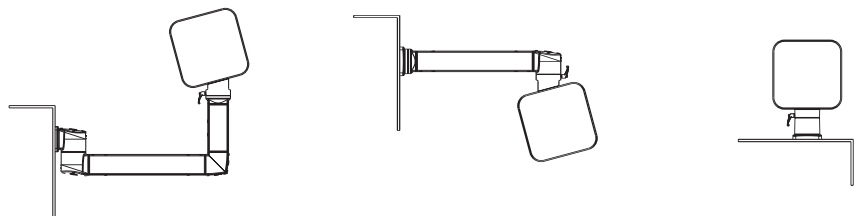
Additional connection security through component design at the mounting area

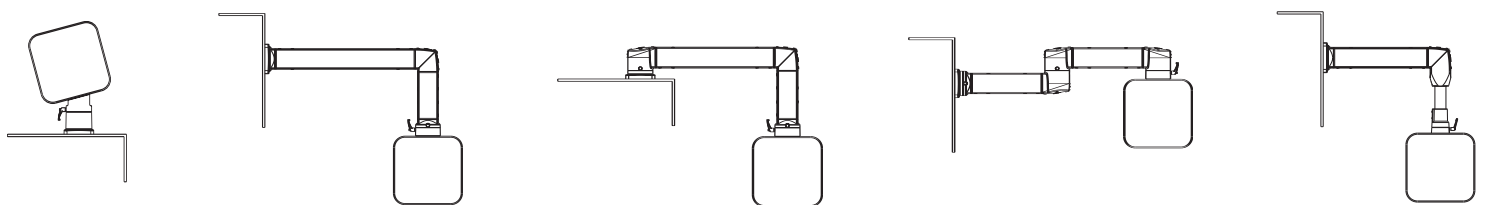
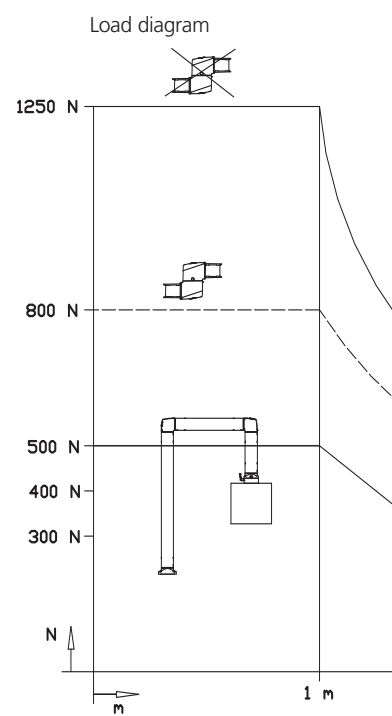
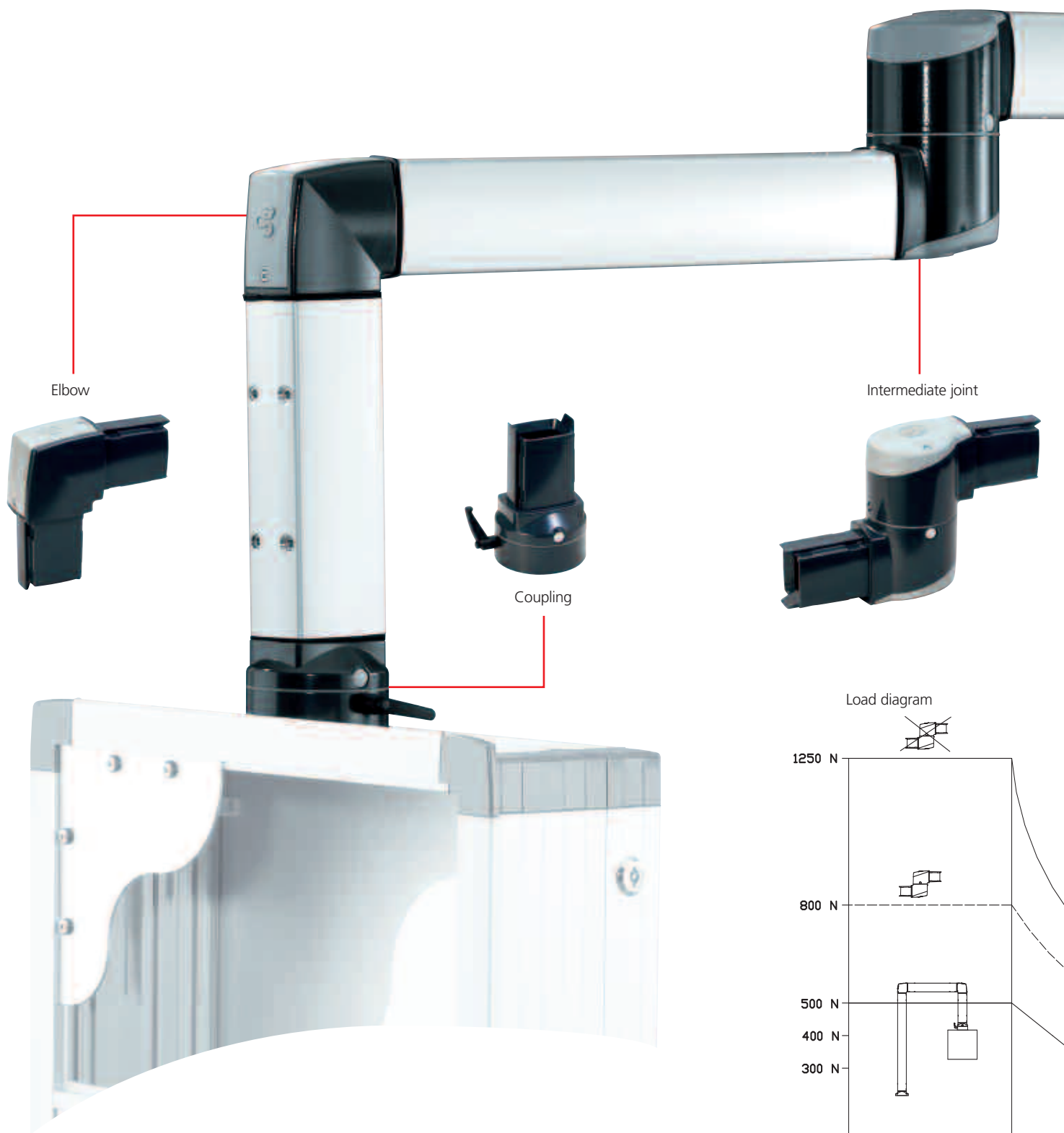


User friendly adjustment at any time – without disassembling the complete system

Application examples, suspension system CS-3000

The numerous modules and components of the CS-3000 offer the ultimate in system flexibility. Even the most angular systems for plant and machines can be created. This versatility is unique on the market!



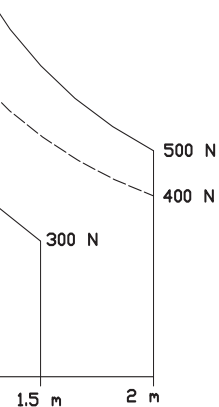
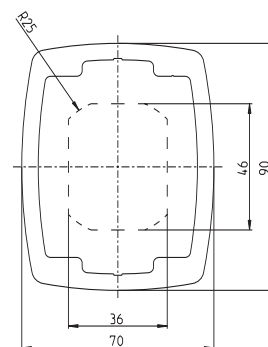
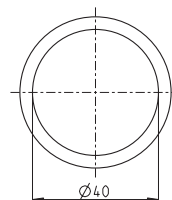




Set-up joint



Tube cross sections

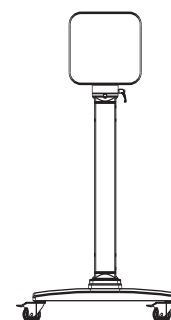
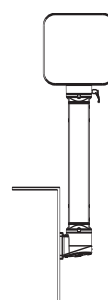
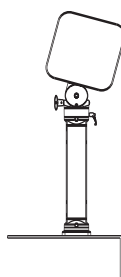
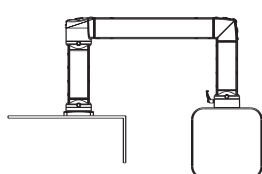
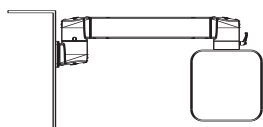


Materials

- Tubes: Anodised aluminium
- Components: Die-cast aluminium
- Component cover plates: Polyamide
- Bearings: POM
- Seals: Neoprene

Colours

- Support system components: RAL 7016 (anthracite grey)
- Connecting tubes: silver (natural) anodised



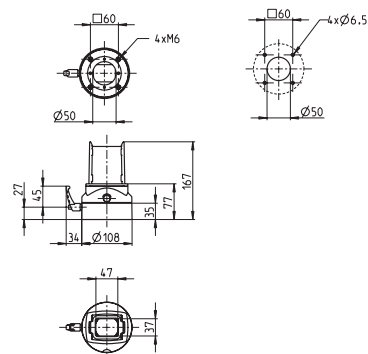
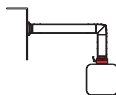




Coupling

Rotation angle 300° with stop.
(Adapter 101.5300.011 is required
for connection to profiles < 120 mm)

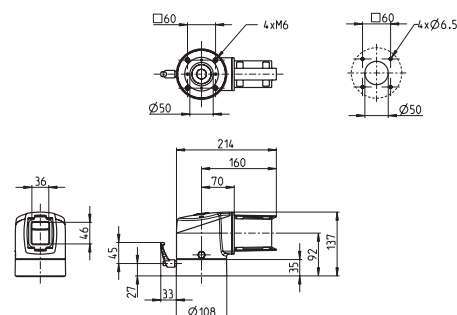
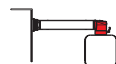
Art. No. 101.5300.001



Elbow coupling

Rotation angle 300° with stop,
assembly opening incl.
screw-fit plastic cover

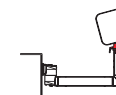
Art. No. 101.5300.002



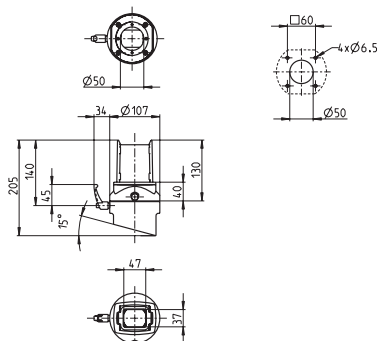
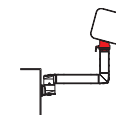
Angled coupling 15° A/B

Rotation angle 300° with stop,
fixed incline of 15°
Variant A inclined back
Variant B inclined forward

A = Art. No. 101.5300.013



B = Art. No. 101.5300.014



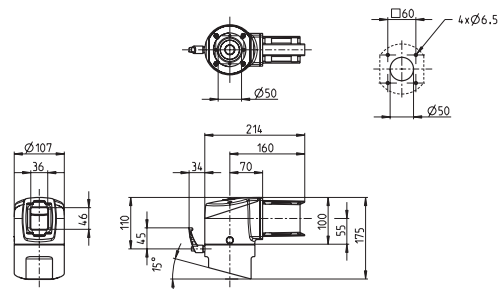
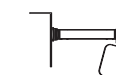
Angled elbow coupling 15° A/B

Rotation angle 300° with stop,
fixed incline of 15°, assembly opening
incl. screw-fit plastic cover
Variant A inclined back
Variant B inclined forward

A = Art. No. 101.5300.015



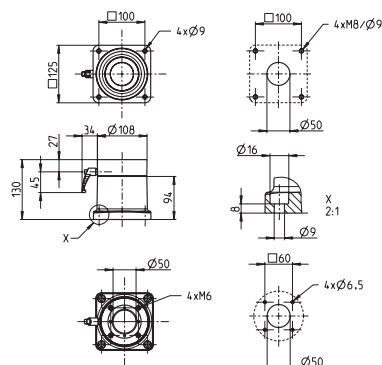
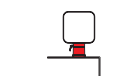
B = Art. No. 101.5300.016



Stand coupling

Rotation angle 300° with stop

Art. No. 101.5300.017



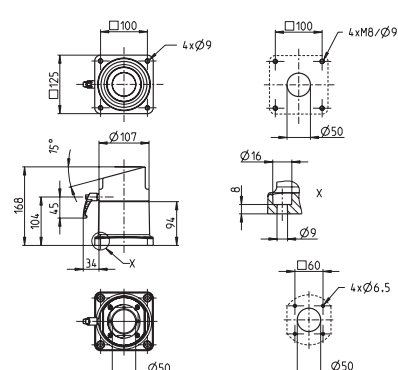
Angled stand coupling 15° A/B

Rotation angle 300° with stop,
fixed incline of 15°
Variant A inclined back
Variant B inclined forward

A = Art. No. 101.5300.018



B = Art. No. 101.5300.019

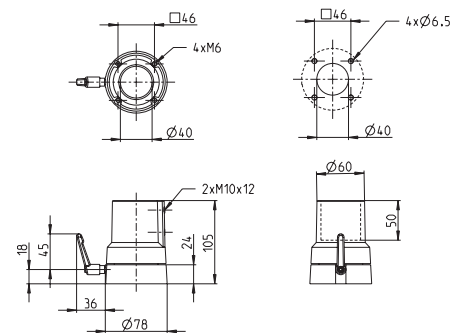
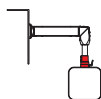




Coupling 48

Rotation angle 300° with stop, only compatible with the 48 mm round tube, the adapter 980.6520.000 is required for connecting to the 80 mm profile

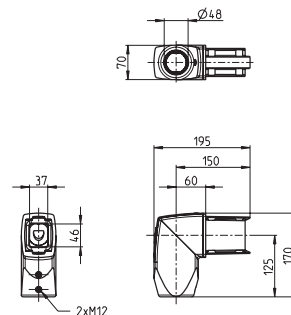
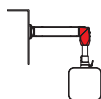
Art. No. 101.3050.000



Reducing elbow RD 48

Reducing elbow from rect. tube to 48 mm round tube

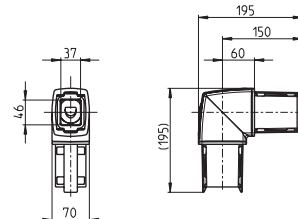
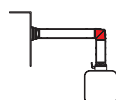
Art. No. 101.5300.020



Elbow

with assembly opening incl. screw-fit plastic cover

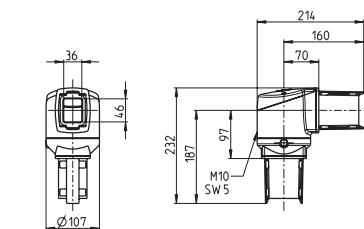
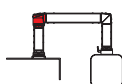
Art. No. 101.5300.008



Rotary elbow

Rotation angle 300° with stop, assembly opening incl. screw-fit plastic cover

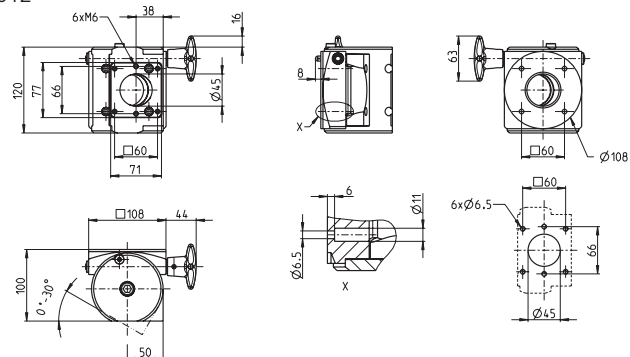
Art. No. 101.5300.009



Angled adapter (stepless 30°)

May only be used in conjunction with couplings, stepless incline adjustable up to 30°, not compatible with 101.3050.000, max. load-bearing capacity 300 N

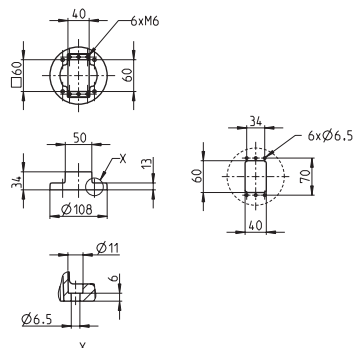
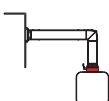
Art. No. 101.5300.012

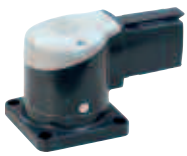


Adapter (narrow profile)

May only be used in conjunction with couplings. (For connection to Bernstein profiles < 120 mm)

Art. No. 101.5300.011

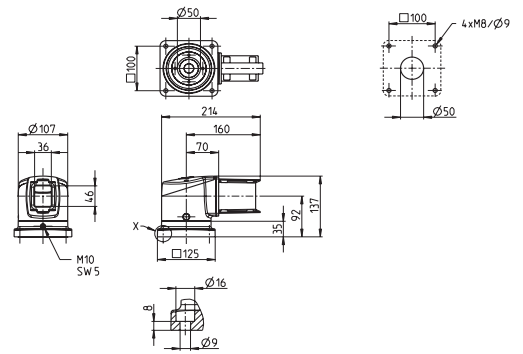
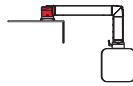




Set-up joint

Rotation angle 300° with stop,
assembly opening
incl. screw-fit plastic cover

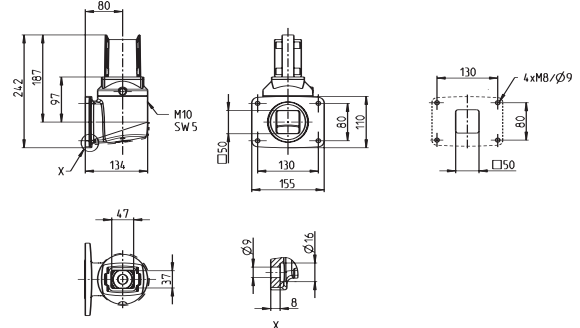
Art. No. 101.5300.003



Vertical wall joint S

Rotation angle 300° with stop,
assembly opening
incl. screw-fit plastic cover

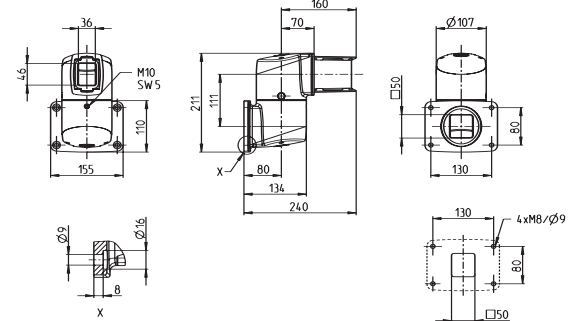
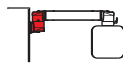
Art. No. 101.5300.006



Horizontal wall joint W

Rotation angle 300° with stop,
2 assembly openings
incl. screw-fit plastic covers

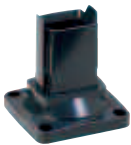
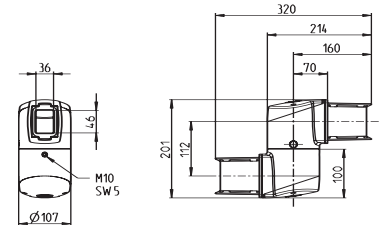
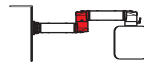
Art. No. 101.5300.007



Intermediate joint W

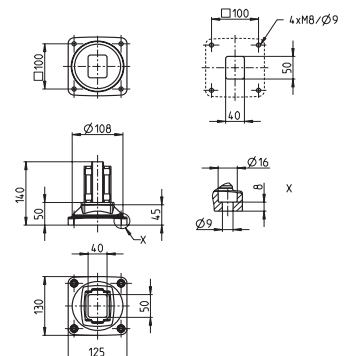
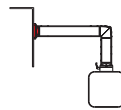
Rotation angle 300° with stop,
2 assembly openings
incl. screw-fit plastic covers

Art. No. 101.5300.004



Base/wall bracket

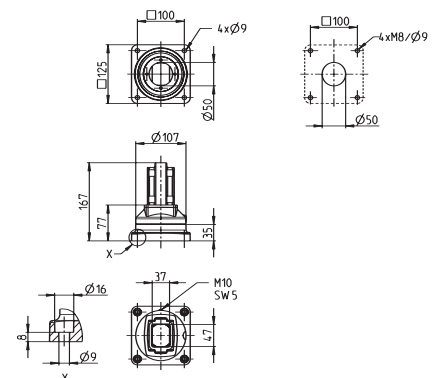
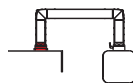
Art. No. 101.5300.010



Rotary base bracket

Rotation angle 300° with stop

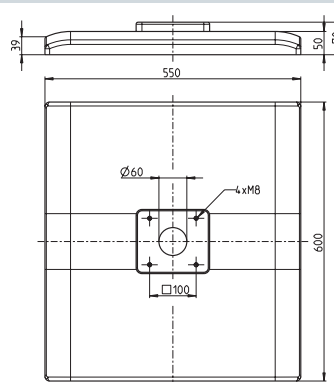
Art. No. 101.5300.005





Free-standing base
Base plate for setting up
a free-standing pedestal.
Compatible with 101.5300.010
and 101.5300.005

Art. No. 101.5300.021



Angled aluminium tubes



Standard lengths (machined both ends)

(available from stock)

Length 70 x 90 x 250 mm
Length 70 x 90 x 500 mm
Length 70 x 90 x 750 mm
Length 70 x 90 x 1000 mm
Length 70 x 90 x 1250 mm
Length 70 x 90 x 1500 mm
Length 70 x 90 x 1750 mm
Length 70 x 90 x 2000 mm

Art. No. 952.4500.001
Art. No. 952.4500.002
Art. No. 952.4500.003
Art. No. 952.4500.004
Art. No. 952.4500.005
Art. No. 952.4500.006
Art. No. 952.4500.007
Art. No. 952.4500.008

Tubes machined at one end

(machining templates supplied)

Length 70 x 90 x 1000 mm Art. No. 952.4500.009
Length 70 x 90 x 2000 mm Art. No. 952.4500.010

If one of our standard lengths is not sufficient, we can also supply tubes machined at one end. Simply shorten to length you require and use the supplied template to machine the shortened end.

Express Service:
Order by 12 noon
for next day delivery!
Prices on request

Machined tubes in the length of your require

We would also be pleased to machine tubes for you in the exact length you require (price and delivery time on request). Or use our Express Service.

Round aluminium tubes

Round aluminium tubes in different lengths.
We would also be pleased to make tubes in the length
that you require (Prices and delivery time on request)

Length 48 x 4 x 250 mm
Length 48 x 4 x 500 mm
Length 48 x 4 x 750 mm
Length 48 x 4 x 1000 mm

Art. No. 952.1400.000
Art. No. 952.1401.000
Art. No. 952.1402.000
Art. No. 952.1403.000



Screw cover set

Plastic covers for sealing the
tube fastening screws
RAL 9006.
Kit contains 50 pcs.

Art.-Nr. 980.6590.000

Rotation angle limitation

Retro-fittable rotation limitation
kit for CS-3000 coupling and joint
components. Adjustable in incre-
ments of 13.7°.
Contains 10 steel balls ø 10 mm

Art. No. 980.5296.000



Industrial castors

Castor set, consisting of
4 steering castors with
locking brake.
Load-bearing capacity of
each castor 50 kg

Art. No. 980.8012.800

Apparatus castors

Castor set, consisting of 2 steering
castors and 2 steering castors with
total locking for free-standing
bases. Load-bearing capacity of
each castor 70 kg

Art. No. 980.8015.300



Levelling feet

Height-adjustable feet
(4 ea.) for free-standing
bases

Art. No. 980.8012.900

Floor anchoring

Floor anchoring set
for the large stand

Art. No. 980.8014.100



Adapter plate

Required with the
coupling RD 48 for
connection to
CC-4000 profile 80

Art. No. 980.6520.000



More safety and ergonomics during operation and observation

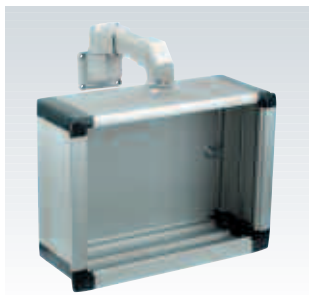
Modular control housing



■ CC-4000



■ CC-4000 SL



■ CC-3000

Industrial workstation



■ WS-6000

International Headquarters

Bernstein AG

Tieloser Weg 6
D-32457 Porta Westfalica
Phone +49 571 793-0
Fax +49 571 793-555
info@de.bernstein.eu
www.bernstein.eu

Service hotlines:

Product

+49 571 793 3000

Order

+49 571 793 3010

Technical

+49 571 793 3020

Denmark

Bernstein A/S

Phone +45 7020 0522
Fax +45 7020 0177
info@dk.bernstein.eu

France

Bernstein S.A.R.L.

Phone +33 1 64 66 32 50
Fax +33 1 64 66 10 02
info@fr.bernstein.eu

Netherlands

Bernstein BV

Phone +31 314 366088
Fax +31 314 361256
info@nl.bernstein.eu

Italy

Bernstein S.r.l.

Phone +39 035 4549037
Fax +39 035 4549647
info@it.bernstein.eu

Great Britain

Bernstein Ltd

Phone +44 1922 744999
Fax +44 1922 457555
info@uk.bernstein.eu

Austria

Bernstein GmbH

Phone +43 2256 62070-0
Fax +43 2256 62618
info@at.bernstein.eu

Switzerland

Bernstein (Schweiz) AG

Phone +41 44 775 71-71
Fax +41 44 775 71-72
info@ch.bernstein.eu

China

Bernstein Safe Solutions (Taicang) Co., Ltd.

Phone +86 512 81608180
Fax +86 512 81608181
info@bernstein-safesolutions.cn