

solidian•kelteks



solidian Briksy



durable and
crack-resisant
reinforcement solution

solidian-kelteks.com



CERTIFIED
ISO 9001
ISO 14001



solidian Briksy

solidian Briksy is a high-tech, non-corrosive reinforcement mesh made from carbon or alkali-resistant glass fibres. It is designed for strengthening masonry walls and screed layers in flooring systems. The specially engineered surface with binder ensures strong bonding with mortar and other cementitious materials so that the mesh and surrounding matrix act together as one durable system.

In brick or block masonry, Briksy is used as bed joint reinforcement placed in the horizontal mortar joints. It increases the in-plane flexural capacity of walls, enhances out-of-plane stability and helps prevent cracking caused by structural loads, shrinkage or temperature movements. In screeds, it contributes to effective crack control and improved stability of floor slabs – particularly beneficial in seismic areas and fast-build projects.

solidian Briksy is suitable for a wide range of masonry and flooring applications in residential, commercial and industrial buildings. Compared to traditional steel solutions, it offers durable, maintenance-free performance, even in humid or otherwise aggressive environments.



Non-corrosive bed joint reinforcement made from high-performance carbon or alkali-resistant glass for reduced risk of wall damage and cracking under in-plane and out-of-plane forces.



CE marking is made according to EAD 260057-00-0303 Inorganic fibre grids for reinforcement of cement-, anhydrite- or resin-based screeds



Exceptional bonding Innovative surface technology for ultimate wall strength



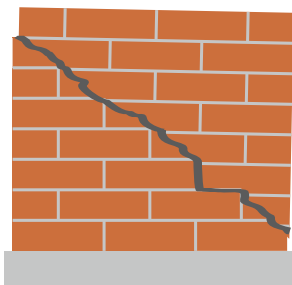
Our innovative surface technology ensures outstanding adhesion between reinforcement and mortar, delivering superior pull-out test results and enhanced structural stability. Trust in the best connection for the strongest performance.

Advanced out-of-plane performance Reinforcing where it's needed most

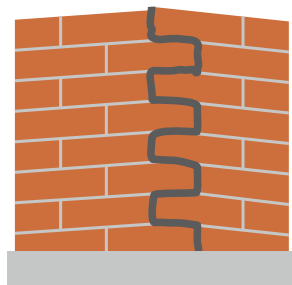


Thanks to its non-corrosive properties, Briksy Carbon can be positioned on external wall edges, unlike conventional metal solutions that are prone to rust. This allows reinforcement to be placed exactly where it's most effective, significantly enhancing out-of-plane performance compared to standard reinforcements that remain in neutral zones.

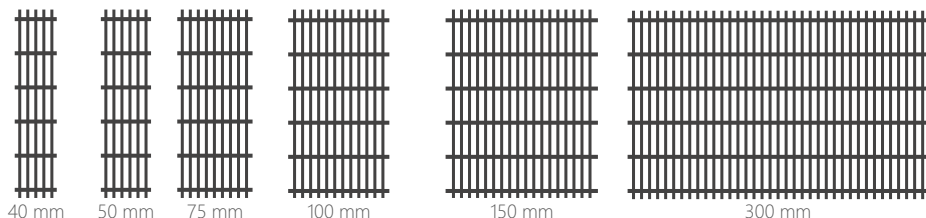
Elimination of the possible "in-plane" wall failure



Elimination of the possible "out of plane" movement



Briksy variations



The complete guide to using solidian Briksy effectively. Our official Briksy Guide provides step-by-step instructions, technical data, and best practices for maximizing performance in masonry applications. From installation to reinforcement strategies - everything you need in one place.

Simple installation

solidian Briksy should be installed horizontally in the wall at vertical intervals of no more than 50 cm, in compliance with NTC 2018 requirements.

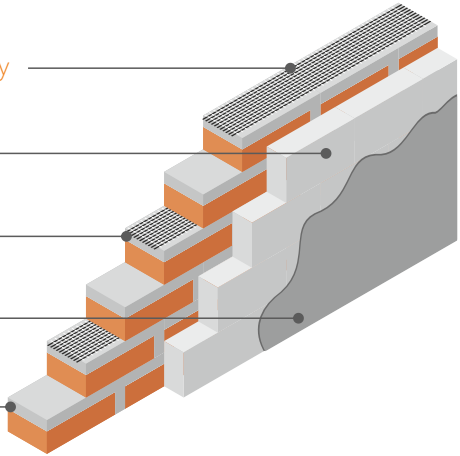
solidian Briksy

Insulation

Mortar

Outer layer

Brick



Easy & fast installation

Secure reinforcement without effort

Lightweight and easy to handle, Briksy Carbon simplifies installation, saving time and reducing labor costs. Enjoy a seamless installation process with a product that doesn't compromise on performance.



Superior strength

The power of carbon for your safety

Briksy Carbon offers tensile strength far beyond metal alternatives, making it ideal for projects demanding the highest levels of safety and stability. Reinforce your structures with unmatched reliability and resilience.



Corrosion free

The solution that withstands time and rust

Unlike traditional metal reinforcements, Briksy Carbon is entirely corrosion-resistant, ensuring long-lasting durability even in the harshest conditions like humidity, salt, and chemicals. Build walls that stand the test of time without worrying about rust or degradation.



Eco friendly

Protect your walls and our planet

Briksy is a sustainable alternative that reduces maintenance needs and extends the life cycle of buildings. Build responsibly with a product that delivers exceptional performance while caring for the environment.

About **solidian&kelteks**

Always one step ahead
with innovative products
we can offer you perfect
solutions for your needs

solidian&kelteks has made a name for
itself as a leading company that provides
a wide range of solutions to improve
construction structure.

We made a commitment to clients to
provide them with customer service,
technical support and being the
leader in providing global innovative
fiber material solutions. We use
advanced technologies to produce
special solutions according to your
needs. Our functional grids are used to
optimize product and processing properties in
a wide variety of applications – including
concretes, UHPC, cement-based mortars,
adhesives, and dry-mix compounds.

build solid.



CERTIFIED
ISO 9001
ISO 14001



Croatia

📍 Dr. Slavka Rozgaja 3
47000 Karlovac Croatia - EU
☎ +385 47 693 314
✉ sales@solidian-kelteks.com

Germany

📍 Sigmaringer Straße 150
72458 Albstadt, Germany - EU
☎ + 49 7431 103135
✉ sales@solidian.com

Türkiye

📍 Cinarli Mah. Ozan Abay Cad. Ege Perla
No:10/222 35170 Konak, İzmir, Türkiye
☎ + 49 7431 103135
✉ sales-turkiye@solidian-kelteks.com

Other Products



check out our website for more
products and innovative solutions



solidian Anticrack CE

is a further development of our
reinforcement **solidian GRID**, which
functions specifically as crack-eliminating
reinforcement. The carbon reinforcement
can be laid close to the surface and thus
has a particularly positive influence on
crack formation in concrete components.
CE marking is made per EAD 260057-
00-0303 Inorganic fibre grids for
reinforcement of cement-, anhydrite-
or resin-based screeds.



solidian Primafloor CE

solidian Primafloor will stop cracks
during the most critical time of drying
and curing of bonded screed, floating
screed, unbonded screed or
underfloor heating screed.



solidian FLEX GRID

Advanced production technology
allows us to fulfill special market
demands for both rigid and flexible
reinforcements, according to
application or customer needs.
Hi-tech flexible reinforcements made
of Carbon, Basalt or Glass.



solidian REBAR

The rod-shaped reinforcement
solidian REBAR is combining high-
strength fibers with extreme resistant
resins. **solidian REBAR** is the right
choice where ever high loads occur
and components are permanently
exposed to aggressive environmental
influences.



solidian ANTISEISMIC Grid

Specially designed for CRM system.
solidian ANTISEISMIC Grid is a non-
corrosive, high-strength, lightweight,
alkali-resistant glass fiber mesh
developed for the reinforcement of
existing and new masonry and
concrete structures subject to static
and dynamic loading.



solidian eGRID

Specially developed flexible grids in
combination with electro conductive
coatings provide high tensile strength
and outstanding electro conductive
properties. **solidian eGRID** is now
also available with different
conductive surface treatments for
special applications in which electrical
conductivity is important.