

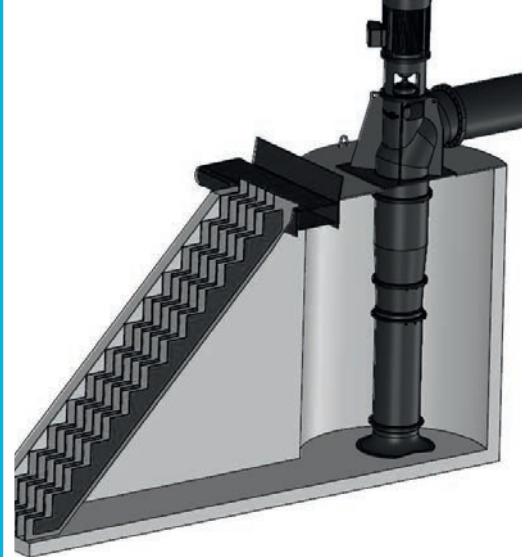
Wintec

Your flexible supplier of **custom solutions**

Wintec guarantees the highest quality
at a competitive price for industry
and public sector projects

Our expertise covers areas such as:

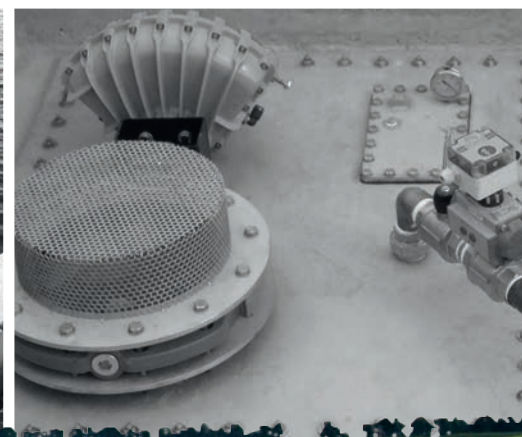
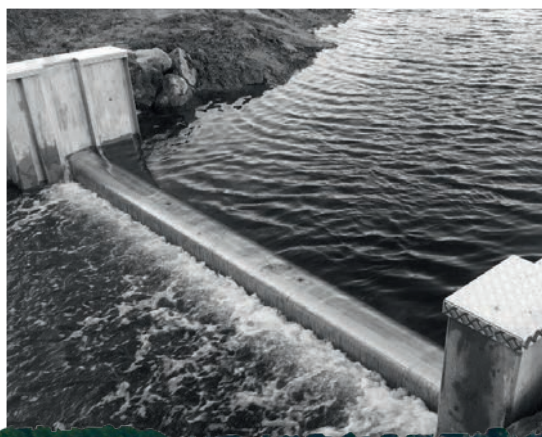
- Climate protection
- New machinery
- Service and repairs
- Assembly
- Maintenance
- All work using steel and stainless steel
- Technical articles from A-Z



Wintec offers:

- Fast production and installation time.
- Better service and working conditions.
- 5-10 years' warranty with a service contract.
- 10-20 year operation and maintenance budgets.

Wintec ensures good solutions
which work well into the future.
Our expertise and customer
references are your security



wintec [®] **BIG STEEL SOLUTIONS**

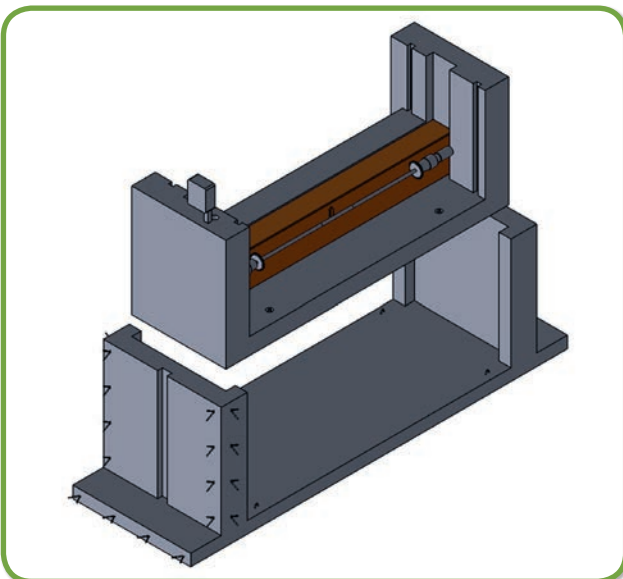
PREFABRICATED SLUICE SYSTEM



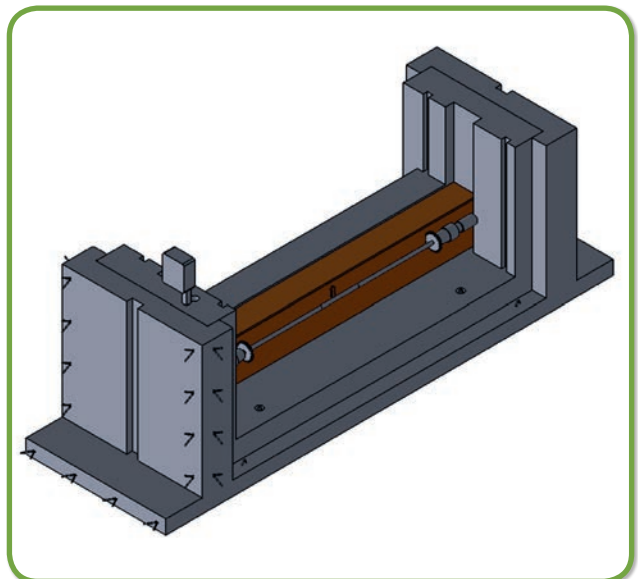
Concrete module

The concrete module has been developed to allow the sluice element to be raised for major service or repairs. If watercourse plans change, the module can be used to turn the sluice system around, so that upstream and downstream flows are swapped.

The concrete module can be used with all three sluice systems.

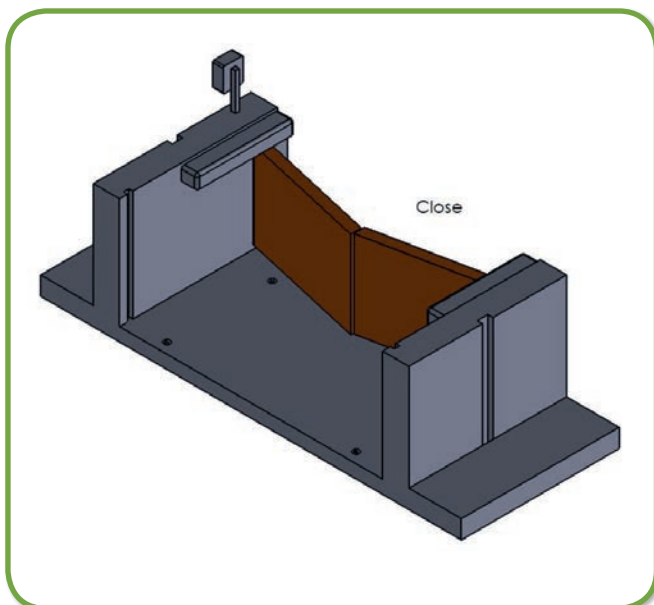


Wintec module sluice gate

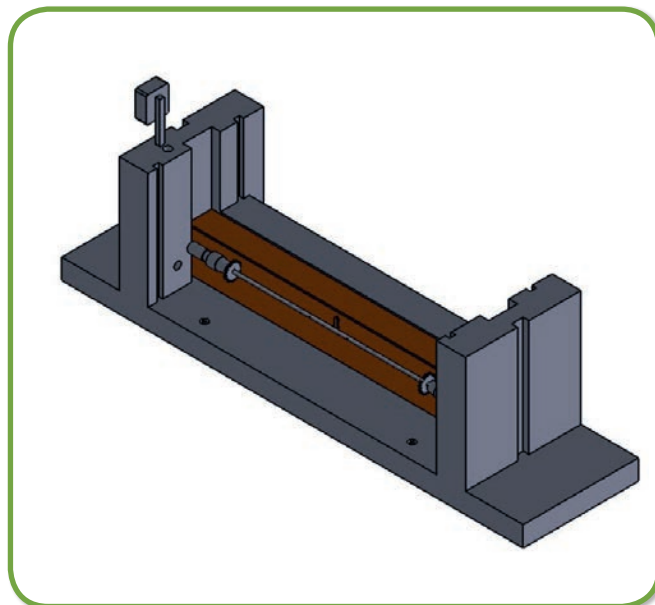


Wintec module sluice gate - installed

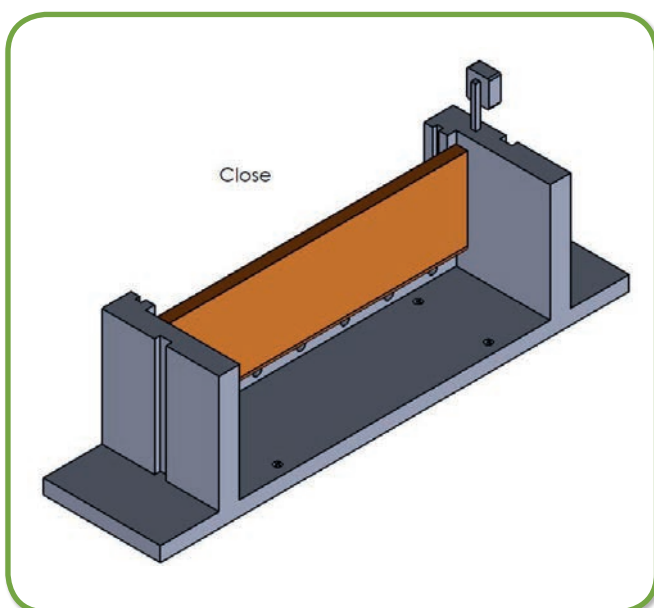
PREFABRICATED SLUICE SYSTEM



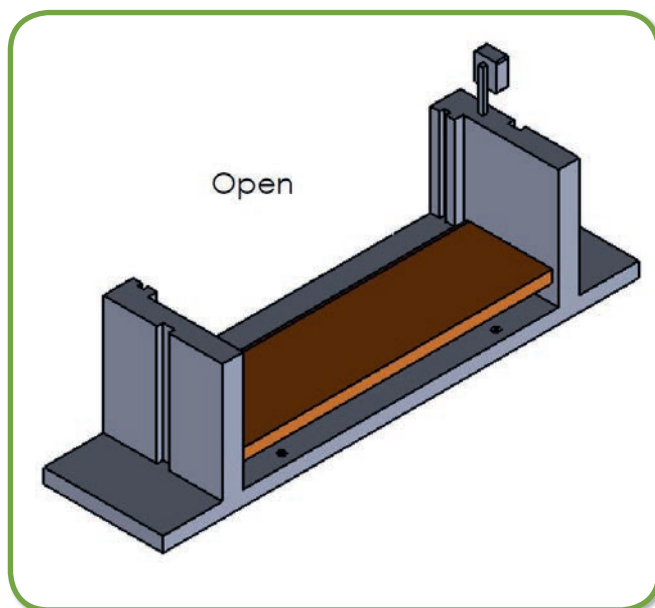
Wintec Double Gate



Wintec Vertical Gate



Wintec Tilt-gate, close



Wintec Tilt-gate, open

WINTERC prefabricated sluice system

For immersion as standard units or concreting into existing channels/structures. The system is made to the customer's specifications and measurements. The systems are patent pending.

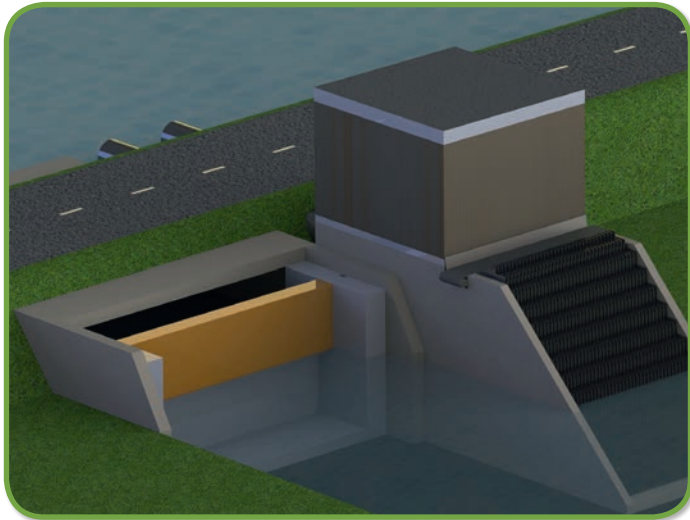
WINTERC offers three different sluice types:

- Vertical gate
- Double gate
- Tilt gate

WINTERC

WWW.WINTERC.DK | +45 9718 1977
WWW.AQUABLOKK.COM

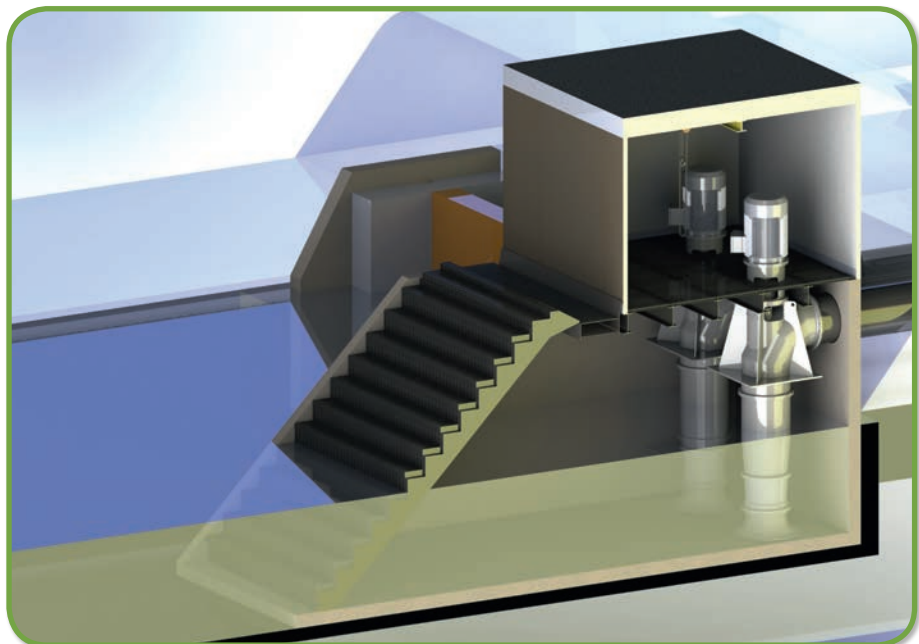
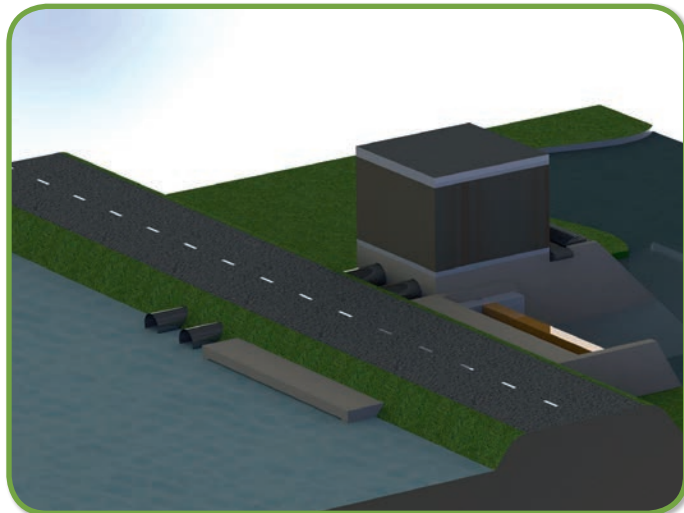
SLUICE SYSTEM WITH PUMP STATION AND GRILL



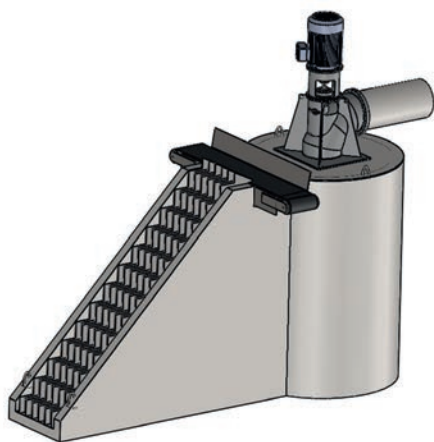
WINTEC sluice system with pump station and grill

WINTEC pump station from 100-20,000 l/sec. (larger on request) with grill structure, conveyor belt, equipment housing, service crane, pumps and control system (alarms and monitoring). The system is made to the customer's specifications and measurements.

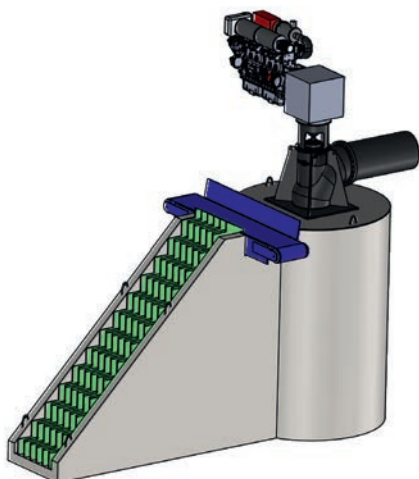
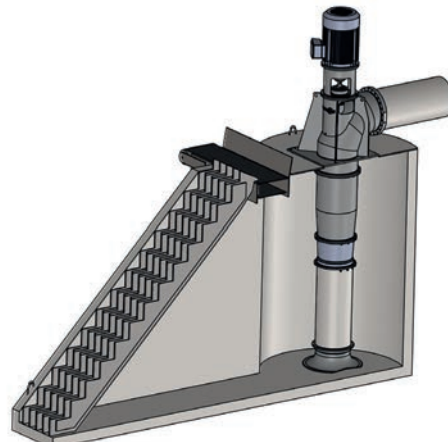
The units have a modular structure, making them faster to assemble on site.



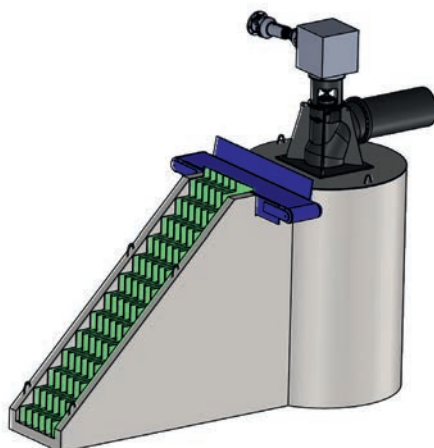
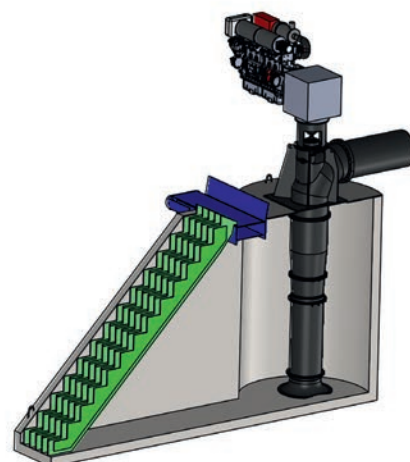
MOBIL PUMP STATION



Pump and grill driven
by electrical motor.
Power supply: 3 phase,
400 volt.

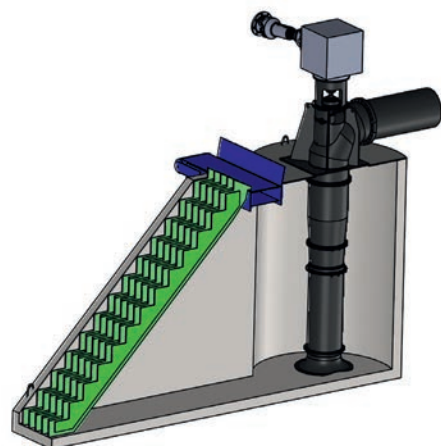


Pump and grill driven
by a diesel engine
and a hydraulic system.



Pump and grill driven by
PTO shaft/tractor.

All pump types are fitted
with a conveyor belt.



VENERONI PUMPS

Wintec is a distributor of the popular VENERONI pumps. The VENERONI pump factory has developed its Type E propeller pump based on years of experience with pump manufacture.

We can therefore present a quality product in terms of materials, reliability and finish.

VENERONI pumps are very flexible in relation to use and installation.

They can be installed vertically, horizontally or at an angle.

They are available in various materials and finishes: painted, galvanised with or without a coating and stainless steel, depending on the nature and aggressiveness of the pump media.

They are also available as multistage pumps, so that the elevation can be increased with the same capacity (while increasing electricity consumption correspondingly). The pitch of the propeller blades can be adjusted, and from the Type E 60, this can be done while the pump is operating.



MOBILE PUMP STATION 200-800 L/SEC

To be mounted on a tractor, truck, semitrailer etc.



Available as a stationary pump, capacity 50 - 2500 l/s (modified up to 4500 l/s)



Mobile pump, capacity 200-800 l/sec. 21-40 kW, elevation 4 m.



CAN BE USED FOR:

- EMERGENCY PUMP
- OVERPUMPING
- FLOOD PROTECTION
- ETC.

Hoses can be fitted on the drain side and suction side with automatic priming. Suction strainer as required.



Wintec

Selected customers of **Wintec** – Big Steel Solutions

Allerød-Rudersdal Forsyning
Byggebjerg Beton A/S
COWI A/S
EnviDan
Fårup Sommerland
Hillerød Forsyning
HOFOR A/S
Horsens Vand
Ikast-Brande Kommune
Kroghs Flaskegenbrug A/S
LEGOLAND
Lyngby-Taarbæk Kommune
Mariagerfjord Kommune
Miljøcenter Århus

Nordvand A/S
Orbicon A/S
Randers Regnskov
Ringkøbing-Skjern Kommune
Rockwool International A/S (Denmark, the Netherlands and Russia)
Siemens Wind Power
Silkeborg Kommune
SK Spildevand A/S
Sweco A/S
VandCenter Syd
Vejle Kommune
Vestas
Ålborg Forsyning



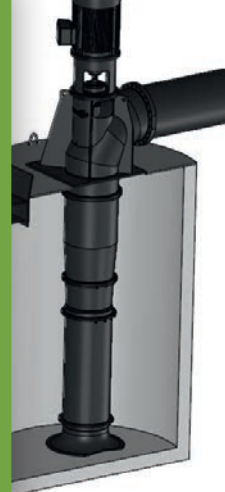
Oliver Bach, Managing Director
Wintec – Big Steel Solutions

Wintec – Big Steel Solutions has specialised within:

- Climate protection
- Dams and sluices
- Drum sieves and grates
- Sliding valves and bending valves
- Water pressure controlled machinery for sewage
- Filter systems for liquids
- Micro filters
- Particle filters
- Drum filters
- Flue gas filters
- Pump equipment
- Overflow structures
- Equipment for sewer and wastewater treatment plants

A number of patents have been awarded based on innovative development over the years.

Visit www.wintec.dk for more information



BIG STEEL SOLUTIONS

Wintec®