

# LASER WHEEL ALIGNER

## EE-MA



## MAIN FEATURES

- Wheel rims- 12 inches to 23 inches
- Easy mount clamps and alloy friendly clamp contact
- The two laser heads automatically recharge in docking station when not in use.
- Continual operation up to 16 hours
- Drop kit for low spoiler vehicles
- Brake Pedal depressor and Steering wheel clamp included

## TECHNICAL DATA

Models	EE-
Total Toe Out	20mm
Toe In	30mm
Individual Toe	10mm
Set Back Up to	60mm
Vehicle Measurement Ranges	
Rim Diameter	12"-23"
Maximum Tyre Diameter	35" (890mm)
Wheelbase	1000mm-4500mm
Track Width	1000mm-3000mm
Power Supply	
Voltage	110-230V 50/60Hz
Re-Chargeable Battery Packs	LiFePO4 3.4V 1100mAH
Battery Type 1100mAH	1500 cycle min.
Re-Charger Life	0°C-40°C
Storage	
Usage	16 hours capacity, continuous use
Docking Station	
Voltage	5 VDC Maximum
635nm 1mw maximum output	Class 2

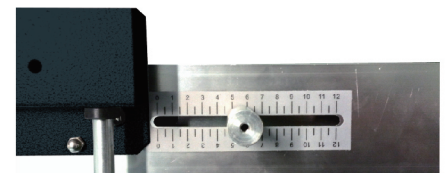
## STANDARD ACCESSORIES



Angle scale



Touching pole to wheels



Touching pole to wheels-1



Hanging rack



Target board for back wheels



Measuring pole for front wheel