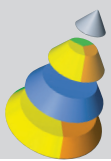
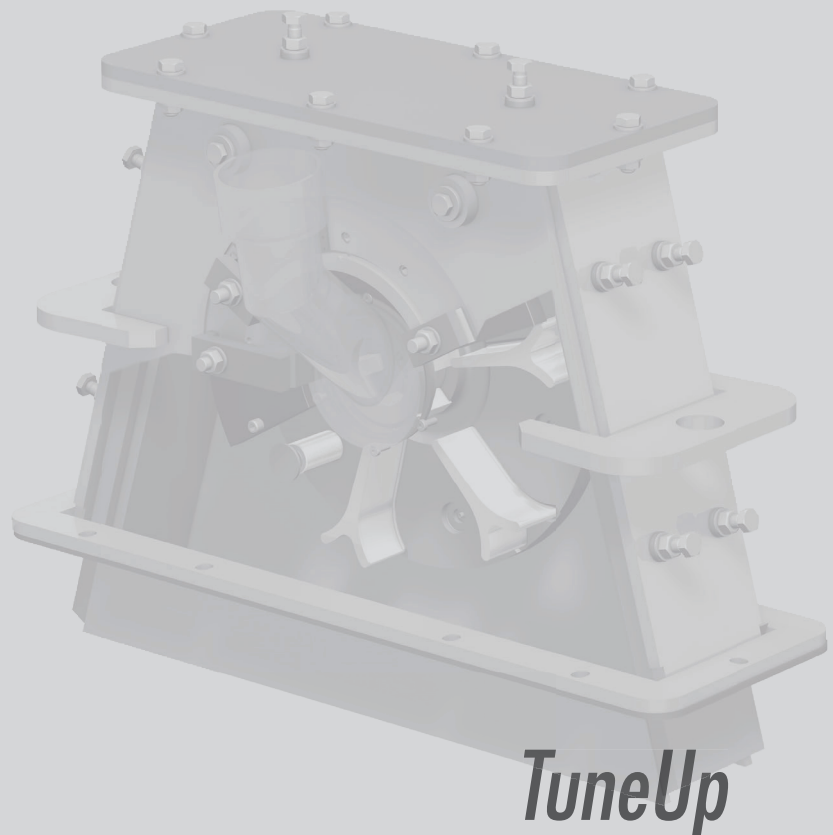


RÖSLER[®]
finding a better way ...

www.rosler.com



TuneUp - Launch into higher blasting efficiency



THE ETERNAL QUESTION



How can you achieve the highest efficiency and the best quality at the lowest costs?

RÖSLER'S CLEAR ANSWER - with customer success guarantee



RÖSLER TuneUp

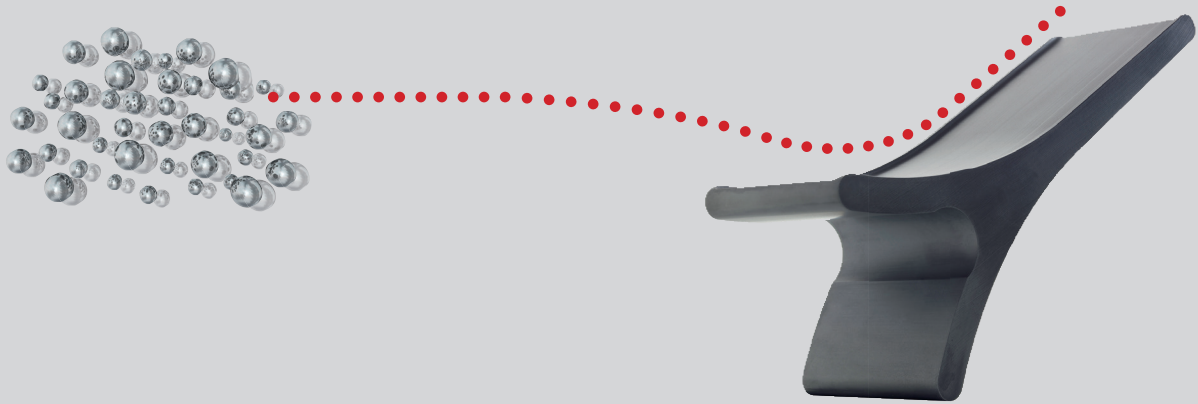
The cost effective option for modernizing your existing shot blast equipment.

We are absolutely certain that we can optimize your shot blast equipment. For this reason, we guarantee technical and economic success – if after the retrofit you are not totally satisfied with the results, we reinstall your old turbines - free of charge!

RÖSLER TuneUp is THE ideal option for shot blast equipment upgrades!



The ideal curve for your shot blast media



TECHNICAL



We offer the knowhow for a wide range of technical solutions. Installation of Rutten® high-performance blast turbines is one of Rösler's specialties! Put our technical expertise to work for you! (DM/052835)

Up to 16 times higher wear resistance

Helps to drastically reduce costly maintenance and downtime with an expected service life of up to 40,000 operating hours!*

Lower energy consumption

Improved cost efficiency of the Rutten turbines provides a savings of at least 10% and up to 25% on energy costs!*

Reduction of processing time

Up to 77% higher media impact energy results in a significant productivity increase!*

Reduction of the blast media consumption

This creates a cost savings of up to 30% on your media costs!*

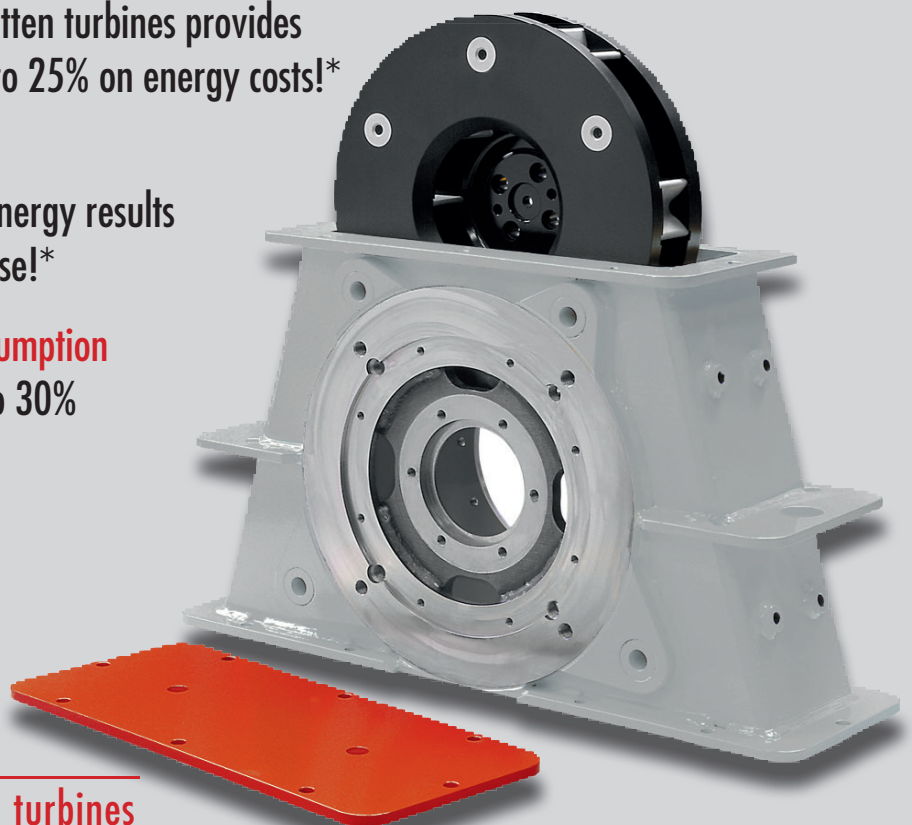
* Depending on the blast application; in comparison to conventional turbines

+ Efficiency

+ Quality

+ Cost Savings

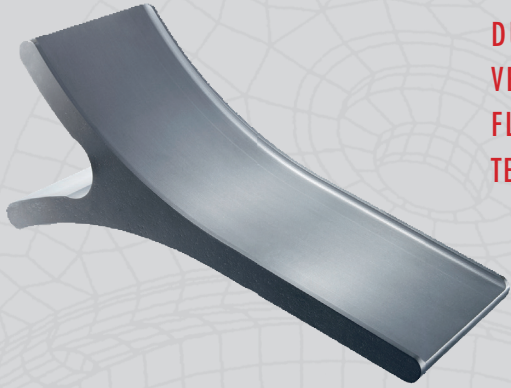
= RUTTEN® - high performance turbines



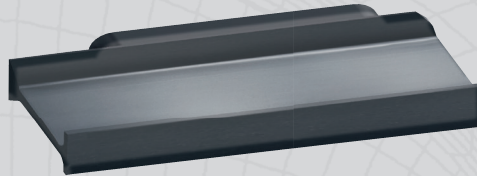
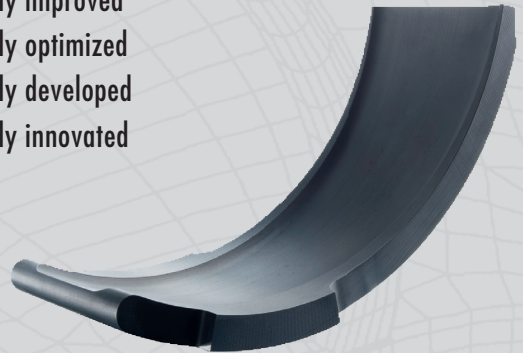
SIMPLE EXPLANATION



The patented unique design of the throwing blades; easily adaptable for your individual applications! (DE/4409690)



- DURABILITY** ▶ continuously improved
- VERSATILITY** ▶ continuously optimized
- FLEXIBILITY** ▶ continuously developed
- TECHNOLOGY** ▶ continuously innovated



THE BONUS – OUR EXCELLENT AFTER SALES SERVICE



Overall service throughout the operational life of your equipment!

Rösler machines produce superior blast quality with the shortest possible process time, offering the ultimate productivity potential. However, the overall success of a blast finishing operation is greatly influenced by maintenance costs and machine uptime. If maintenance is necessary, Rösler can meet all your requirements!



- ▶ BUS measurements
- ▶ Process and operational expertise
- ▶ Global network of test centers
- ▶ Blast media analysis
- ▶ 24-hour hotline for round-the-clock blasting customer support
- ▶ Spare parts and wear parts for any make and model of blast machine
- ▶ Customer-specific maintenance plans
- ▶ Operation and maintenance training
- ▶ Machine overhauls
- ▶ Safety and environmental support
- ▶ Conductor checks (in compliance with EN 60204-1)
- ▶ Machine checks (in compliance with European safety requirements 2009/104/EG)

MAINTENANCE AND REPAIR SERVICE

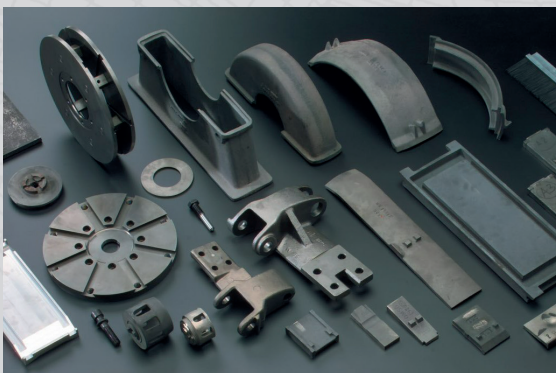


Our qualified service team is ready to assist you at any time, no matter the type of service work required. We handle emergencies, repairs or scheduled maintenance work.

Short response times and well-equipped service vehicles enable us to quickly and expertly repair and service your equipment.



SPARE PARTS AND WEAR PARTS



Rösler can provide spare parts and wear parts for our machines, as well as all other makes and models of blast machines on the market!

Rösler maintains a large stock of parts. This guarantees a high parts availability and quick or overnight delivery.

DO YOU STILL HAVE QUESTIONS



Phone: +49 (0) 9533 / 924-888

E-Mail: info@rosler.com

Adress: Rösler Oberflächentechnik GmbH
Vorstadt 1
96190 Untermerzbach
Germany

Internet: www.rosler.com

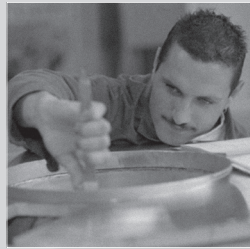


finding a better way . . .

When it comes to dealing with surface finishing and surface preparation problems, Rösler offers the **total process solution!** Our customers can choose between two processing technologies, **Vibratory Finishing or Shot Blasting** which offer virtually unlimited possibilities. Through extensive processing trials we always find the right finishing solution for our customer's needs. This includes not only the development of a specific finishing process, but also the selection of the right equipment and consumables. Rösler truly offers the total solution to satisfy your surface finishing requirements. Our success in the market proves that our philosophy is right. It is not by accident that our innovative developments and our high quality standards have established Rösler as the world's technology and market leader in surface finishing and surface preparation.



In more than 60 countries we support our customers with a closely-knit network of Rösler subsidiaries and sales representatives.



We are the only company in our field that operates test and demonstration centers throughout the world allowing us to run test trials under real production conditions close to our customers. This offers many advantages: Our customers save time and money and, at the same time – through our professional processing trials and advice – they are assured of receiving the best process solutions and products available on the market!

Worldwide Demonstration and Test Centers

Vibratory finishing and shot blasting test center located at the Rösler headquarters in Untermerzbach:

- more than 95 vibratory finishing and shot blasting systems
- working space: approx. 2,700 square meters (2,700 square ft)

Similar test centers are located in the United States, Great Britain, France, the Netherlands, Belgium, Switzerland, Spain, Italy, Austria, South Africa and Brazil.

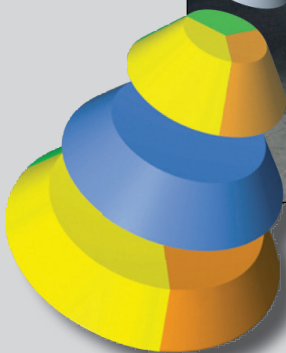
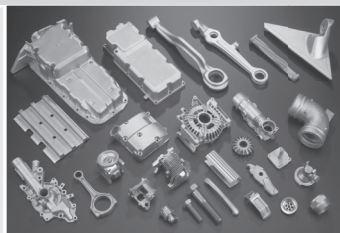
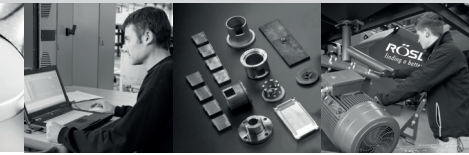
The Total Process Solution

- The perfect interaction between consumables, equipment and process safety
- Cost-saving automatic finishing systems
- Qualified field service teams guarantee smooth installation and commissioning of your equipment
- Comprehensive training of your operators and maintenance staff
- After-sales service guarantees high uptimes for your equipment

Environmental - Quality Team Spirit

The consideration of environmental issues in our products and process technologies guarantees a high level of product quality and environmental protection. For example, recycling of the process water is a key feature of our mass finishing systems. In this case, the positive effect on the environment is augmented by savings of compound and water of up to 95%. At the same time, a high level of process repeatability and finishing quality is guaranteed.

Rösler is a team oriented organization where initiative and commitment of each employee play a key role. Continuous training and a cooperative management style combined with lean organizational structures are essential elements of our corporate philosophy. This allows us to create a workplace environment which attracts talented young people.





- D** RÖSLER Oberflächentechnik GmbH · Werk Memmelsdorf
Vorstadt 1 · D-96190 Untermerzbach
Tel.: +49/9533/924-0 · Fax: +49/9533/924-300 · rosler-de@rosler.com
- RÖSLER Oberflächentechnik GmbH · Werk Hausen
Hausen 1 · D-96231 Bad Staffelstein
Tel.: +49/9533/924-0 · Fax: +49/9533/924-300 · rosler-de@rosler.com
- USA** RÖSLER Metal Finishing USA, L.L.C.
1551 Denso Road · USA-Battle Creek · MI 49037
Tel.: +1/269/4413000 · Fax: +1/269/4413001 · rosler-us@rosler.com
- F** RÖSLER France
Z.I. de la Fontaine d'Azon · CS 50513 – St. Clément · F-89105 Sens Cedex
Tel.: +33/3/86647979 · Fax: +33/3/86655194 · rosler-fr@rosler.com
- I** RÖSLER Italiana S.r.l.
Via Elio Vittorini 10/12 · I-20863 Concorezzo (MB)
Tel.: +39/039/611521 · Fax: +39/039/6115232 · rosler-it@rosler.com
- CH** RÖSLER Schweiz AG
Staffelbachstraße 189 · Postfach 81 · CH-5054 Kirchleerau
Tel.: +41/62/7385500 · Fax: +41/62/7385580 · rosler-ch@rosler.com
- GB** RÖSLER UK
Unity Grove, School Lane · Knowsley Business Park · GB-Prescot, Merseyside L34 9GT
Tel.: +44/151/4820444 · Fax: +44/151/4824400 · rosler-uk@rosler.com
- E** RÖSLER International GmbH & Co. KG
Sucursal en España · Polg. Ind. Cova Solera C/Roma, 7 · E-08191 Rubí (Barcelona)
Tel.: +34/93/5885585 · Fax: +34/93/5883209 · rosler-es@rosler.com
- NL** RÖSLER Benelux B.V.
Reggestraat 18 · NL-5347 JG Oss · Postbus 829 · NL-5340 AV Oss
Tel.: +31/412/646600 · Fax: +31/412/646046 · rosler-nl@rosler.com
- B** RÖSLER Benelux B.V.
Avenue de Ramelot 6 · Zoning Industriel · B-1480 Tubize (Saintes)
Tel.: +32/2/3610200 · Fax: +32/2/3612831 · rosler-be@rosler.com
- A** RÖSLER Oberflächentechnik GmbH
Hetmanekgasse 15 · A-1230 Wien
Tel.: +43/1/6985180-0 · Fax: +43/1/6985182 · rosler-at@rosler.com
- RO** RÖSLER Romania SRL
Str. Horia Closca si Crisan 17-19 · RO -075100 Otopeni/ILFOV
Tel.: +40/21/352 4416 · Fax: +40/21/352 4935 · rosler-ro@rosler.com
- RUS** RÖSLER Russland
Borovaya Str. 7, bldg. 4, office 107 · 111020 Moscow
Tel. / Fax: +7 / 495 / 665 63 32 · Mob.: +7 / 495 / 505 23 15 · rosler-ru@rosler.com
- BR** RÖSLER do Brasil LTDA
Estrada dos Galdinos 35 · Jd. Barbacena · 06700-000 · Cotia · São Paulo · Brasil
Tel.: +55/11/46123844 · Fax: +55/11/46123845 · rosler-br@rosler.com
- ZA** RÖSLER S.A. Surface Technologies
P.O. Box 7949 · 66 Regency Drive · Route 21 Corporate Park · Irene Ext. 31 · ZA-0046 Centurion
Tel.: +27/12/345 2215 · Fax: +27/12/345 3731 · rosler-za@rosler.com
- CN** RÖSLER – BEIJING
Office 11N, Tower A, Beijing Fu Hua Mansion · No. 8, Chaoyangmen North Avenue
Dong Cheng District · Beijing 100027 P.R. China
Tel.: +86/10/6554 73 86 · +86/10/655473 89 · Fax: +86/10/6554 73 87 · rosler-cn@rosler.com
- IND** RÖSLER SurfaceTech Pvt. Ltd.
No.9, I Main Road, M.L.A Layout · R.T. Nagar · IND-Bangalore 560 032
Tel.: +91/80 23534445 · Fax: +91/80 23339165 · rosler-in@rosler.com

- and more than 60 representations worldwide

Surface Finishing · Shot Blasting · Engineering · Environmental Techniques

RÖSLER Oberflächentechnik GmbH · www.rosler.com

