

dPOFLEX Industrial Peristaltic Pump

GP01, BP01

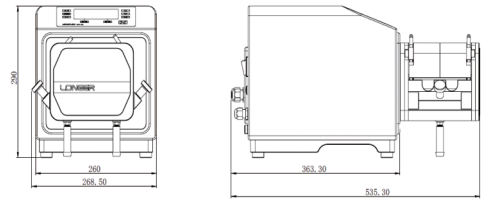
Max. Flow Rate:



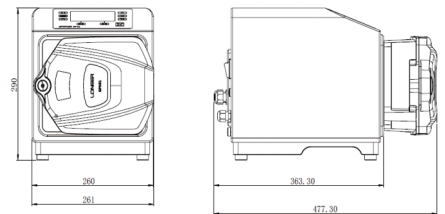
- Available in stainless steel housing and cast aluminum housing for variety of applications
- IP66 for wet and dusty environment
- Supporting fieldbus communication control, digital signal control, analog signal control, and pump status output
- Three-level user authority management, with electronic signature and audit trail functions, meet 21CFR Part 11 and GMP lab requirements
- Integrating multiple sensors: fluid leakage sensor, open-head sensor and flow rate sensor, to realize predictive maintenance

Pump drive model	dPOFLEX GP01	dPOFLEX BP01
Housing material	Cast aluminum	304sst
Speed range	0.1rpm-265rpm, CW/CCW	
Speed resolution	0.1rpm	
Display	4.3 inch LCD, Chinese or English	
Clock function	Year/month/day/hour/minute can be set, hours and minutes are displayed on the running screen	
Work mode	Flow rate mode, dispensing mode, calibration mode	
Flow rate mode	Pump runs continuously at the set flow rate, and displays flow rate and pump speed on the screen	
Flow rate setting range	1.1ml/min-17.0L/min (depending on pump head and tubing)	
Dispensing mode	Pump repeats the dispensing at set volume, cycles and interval time, and displays single volume, dispensed volume, dispensed cycles/target cycles on screen	
Volume of single dispense	1.0mL-274.9L (depending on pump head and tubing)	
Dispensing cycles	1-9999 (0 for unlimited)	
Interval time	5s-9999s	
Calibration function	Improve the flow rate and dispensing volume accuracy	
Control mode	Keypad control, external signal control and communication control	
Communication control	Rs485 or TCP/IP (optional) interface, Modbus RTU, Industrial Ethernet (optional), Profibus DP (optional)	
External control	Speed control: 0-10V, 4-20mA	
Status output	Start/stop, direction control: 5V-24V logic level signal or relay signal (dry contact) Pump Speed: 0-10V, 4-20mA, frequency signal (optional)	
Open head sensor	Running/stop, direction, tubing leak alarm: relay signal (dry contact)	
Status when power up	Pump will stop when pump head is open for enhanced user safety	
Keypad lock function	Stop	
Tubing leak detection	Enable the keypad lock function to lock the keypad automatically after 20s standby, (start/stop key will not be locked)	
Flow rate measurement	Detect the tubing leak and give alarm (optional)	
User access control	Measure the flow rate by connecting flow meter (optional)	
Electronic signature and audit trail	Three levels of user accesses (administrator, technician, operator)	
Log record	Meet the requirement of FDA 21CFR Part 11	
Support IQ/OQ	Record 90 days operation history, and can be exported directly	
Certificate	Meet GMP requirement CE, UKCA	
Demension (LxWxH)	260x407x298mm	260x407x290mm
Power supply	AC100-240V 50/60Hz	
Operating condition	Temperature: 5°C-40°C, relative humidity ≤ 100%	
IP rating	IP 66	
Weight (drive only)	≤ 17.6kg	≤ 16.6kg

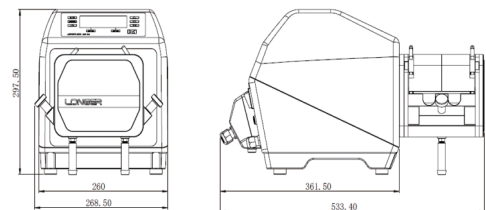
BP01+LPH01



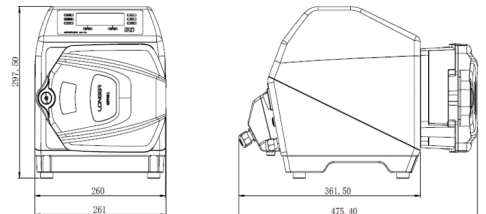
BP01+GPH01



GP01+LPH01



GP01+GPH01



Model (Product Code)	Pump Head	Roller Number	Tubing	Reference Max. Flow Rate (L/min)
dPOFLEX GP01 (05.02.80A) dPOFLEX BP01 (05.02.81A)	GPH01	2	26#, 73#, 82#, 184#	15
	GPH02	2	186#, 188#	17
	GPH03	4	186#, 188#	14
	LPH01	6	185#, 186#, 187#	13.5

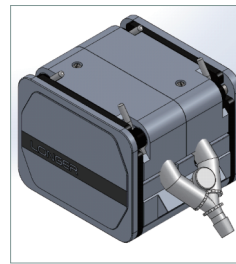
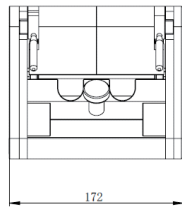
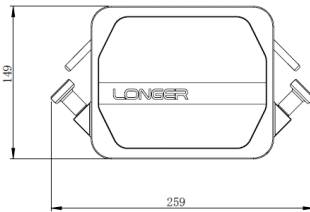
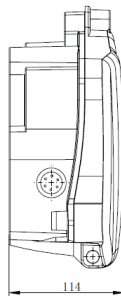
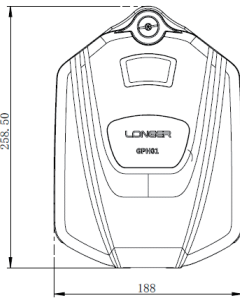
dPOFLEX Industrial Pump Head

GPH, LPH

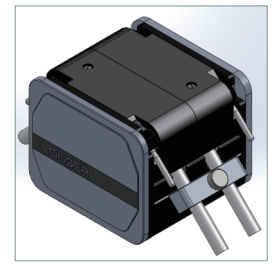
Max. Flow Rate:



- LPH has low pulsation design for high flow rate accuracy
- GPH has two tubing retention modes: continuous tubing and tubing with fittings
- GPH could be equipped with tubing leak sensor
- Both GPH and LPH are designed with open head sensor for enhanced operator safety



LPH with double tubing assembly for low pulsation pumping



LPH with continuous tubing for double channel pumping



Double tubing assembly for LPH



Tubing fitting assembly for GPH

Model	Product Code	Roller Number	Roller Material	Housing Material	Speed (rpm)	Tubing ID x Wall Thickness (mm)	Reference Max. Flow Rate (L/min)	Weight (Kg)
GPH01	05.01.70A	2	304sst	Die-cast aluminum	<=265rpm	26# (6.4x3.2)	3.0	4.1
						73# (9.5x3.3)	6.0	
						82# (12.7x3.3)	10.5	
						184# (15.9x3.2)	15.0	
GPH02	05.01.71A	2	304sst	Die-cast aluminum		186# (12x4)	9.5	4.0
						188# (17x4)	17.0	
GPH03	05.01.71B	4	304sst	Die-cast aluminum		186# (12x4)	8.5	4.7
						188# (17x4)	14.0	
LPH01	05.01.72A	6	304sst	anodized aluminum		185# (8x4)	4.5 (double tube assembly)	8.6
						186# (12x4)	9 (double tube assembly)	
					187# (16x4)	13.5 (double tube assembly)		