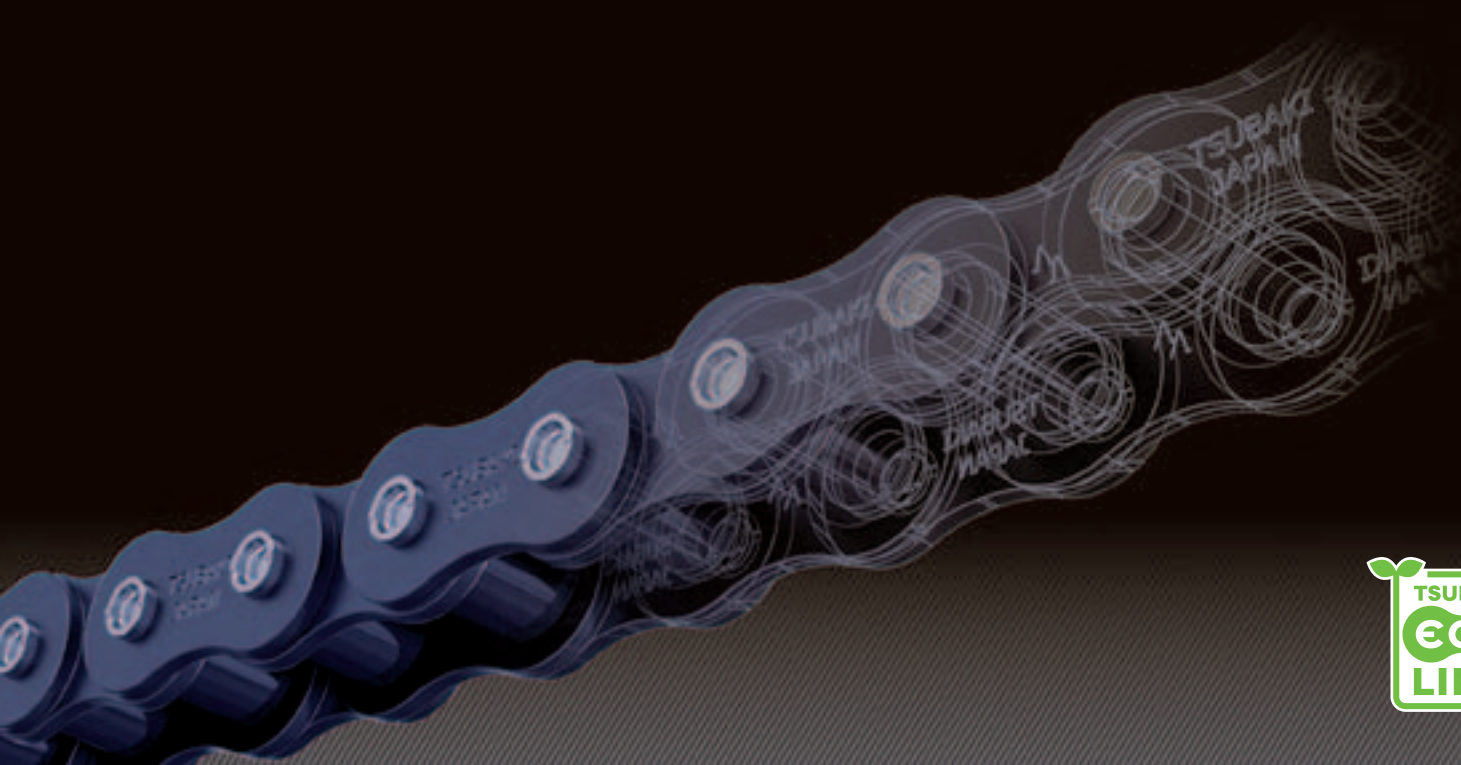


Lambda RS Roller Chain

The most advanced lube free chain in the European market



Made in Japan

Located in Kansai Science City, the Kyotanabe plant embodies our wide spectrum of cutting-edge technological solutions. Our aim is to develop this environmentally friendly facility into the world's number one chain plant. Furthermore, Kyotanabe's Technical Centre plays a vital role within the Tsubaki Group through its R&D activities and distribution of knowledge.

The Kyotanabe plant is an excellent example of a facility built on the foundation of Tsubaki's technical expertise.

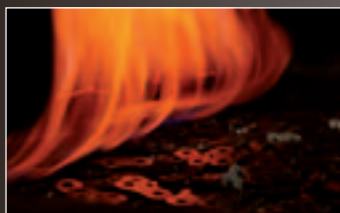
Consideration for the Global Environment

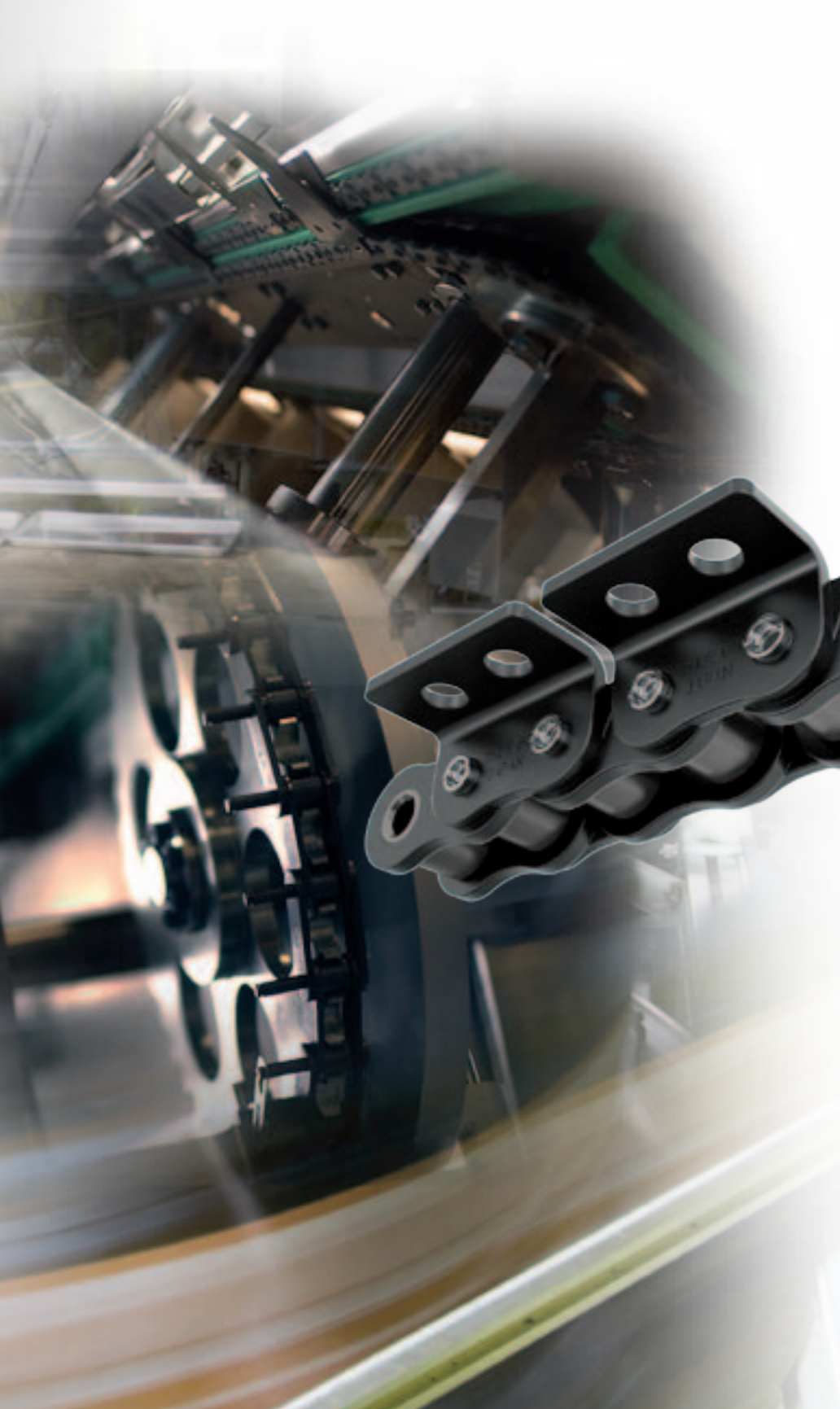
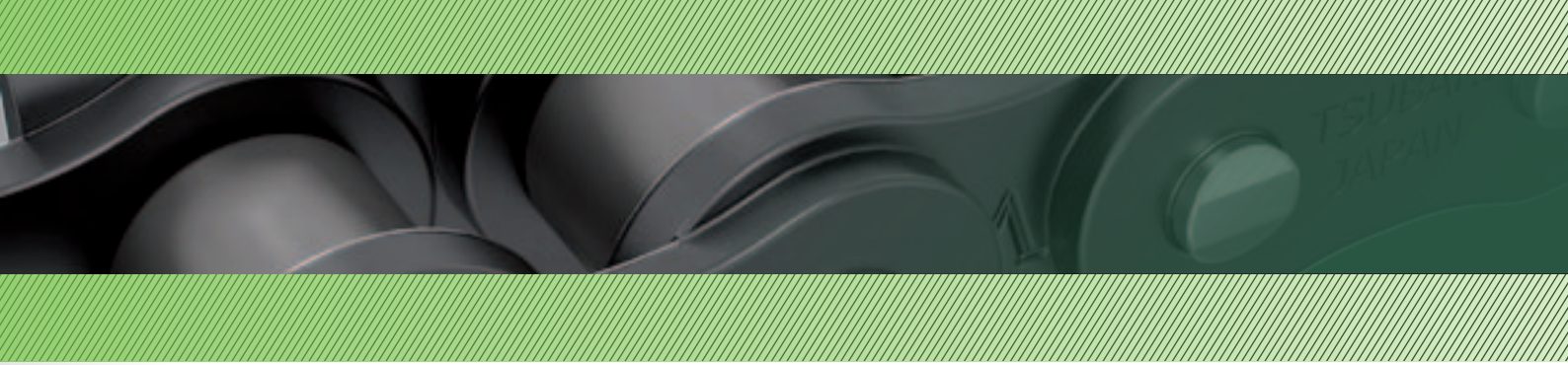
The Tsubaki Group is working to conserve the environment and reduce the environmental impact of its operations by improving the efficiency of its manufacturing activities.

In addition, the Tsubaki Group is advancing the development of environmentally friendly products. These eco-products help customers reduce energy consumption and improve the economic aspects of their operations.



The Tsubaki Eco Link logo is used only on products that satisfy the standards for environmental friendliness set by the Tsubaki Group.





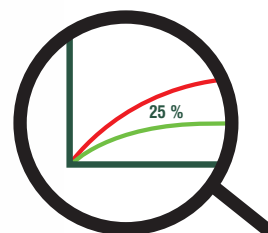
Tsubaki's Commitme

Lambda Sintered Bush



Tsubaki Lambda bushes have been upgraded to the optimum composition of sintered metals. The lubricant specifications and oil impregnation methods have been reviewed and further improved.

In addition, heat treatment and the geometry of the bush were improved to secure optimal performance.



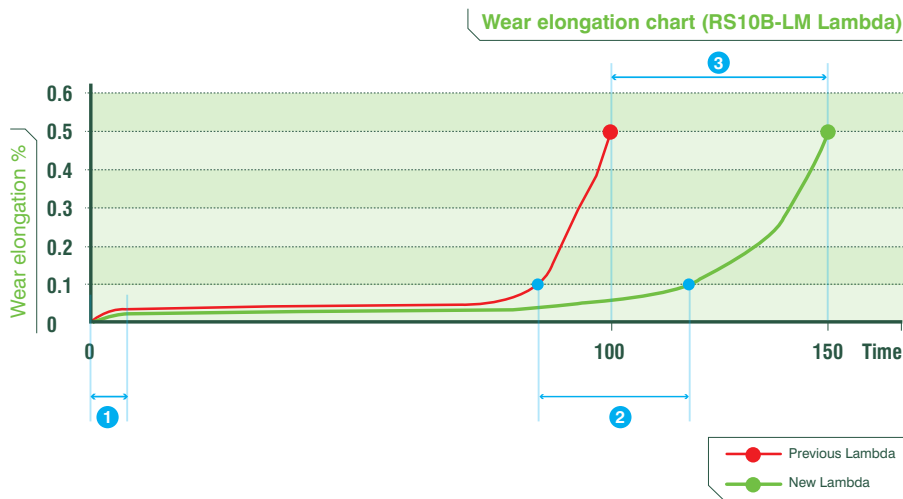
Product range



THE MOST ADVANCED LUBE FREE CHAIN IN THE EUROPEAN MARKET



nt to Unparalleled Quality



1 Initial Elongation

For conveyor applications, a 25% reduction in initial elongation now comes as standard. This results in the reduced need for post installation maintenance (less chain / sprocket adjustment) and contributes to the overall increased wear life time ^[a].

2 Elongation Stability

The elongation pattern of the New Tsubaki Lambda chain is now extremely stable. This minimizes the need for intermediate chain and sprocket adjustment.

3 Wear life

As a result of the achieved improvements, the wear life of the New Lambda chain increased by 50% ^[b] while maintaining the same chain strength.

Environment

Lambda chain is a lube free chain with lubricant impregnated in the bushes. Therefore there is no need for lubricating the chain during operations. The zero usage of additional lubricant during machine operations helps reducing chemical waste and greatly limits the risk of product contamination. Tsubaki Lambda chain contributes to a clean work environment.

Manufacturing chain with a substantially longer wear-life serves the environment: less frequent chain replacement results in reduced consumption of raw materials and energy and reduces the CO₂ emission. Lambda chain is a true eco-friendly product.

Chain Selection Software

Tsubaki's chain selection software offers an in-house developed calculation program with which chain can be selected easily: the user inputs the individual drive requirements first. The Tsubaki chain selection software then calculates the required chain size and type, and offers the user a constructive chain solution.

Standard chain

Lambda drive and attachment chains in standard sizes are available from stock. The product is available in chain sizes from RF06B up to RS24B in simplex and duplex execution and in N.E.P execution ^[c]. Lambda chain can be used in temperatures up to 150°C ^[d].

Special chain

Tsubaki offers special chain to customer's specifications from either its fully equipped workshop in The Netherlands and the United Kingdom or from its manufacturing facilities in Japan. Heat resistant, food-grade and anti-corrosion executions are also available upon request.

Match & Tag

The "Matchy" is an in-house facility which allows Tsubaki Europe to supply customers with drive or attachment chain in pairs or multiples that require a specific overall chain length tolerance.

New Generation Tsubaki Lube Free RS Roller Chain – Lambda

Since 1917 Tsubakimoto Chain Company has consistently provided the highest quality industrial chain. Being the global leader in innovation, Tsubaki became the world's first manufacturer to introduce lube free chain under the brand name Lambda in 1988.

The Lambda chain is ideal for environments where chain lubrication is difficult, impossible or undesirable. Typical applications can be found in industries where clean environments are required (e.g. food, packaging) and in environments where abrasive contamination is prominent (e.g. wood processing, paper industry).


Tsubaki is now proud to introduce the 5th generation premium BS/DIN Lube Free Lambda Chain.

Chain Features:

- 1 Sintered Oil Impregnated Bush**
The microscopic pores in the seamless sintered bush are vacuum filled with high performance lubricant. The upgraded bush design provides a 50% increase in wear-life performance.
- 2 Special Coated Pin**
The special coating on the pin surface enhances the long term internal lubrication.
- 3 Centre Sink Rivet**
The unique centre sink pin design offers easy chain disassembly and the markings on the rivet head will identify pin rotation.
- 4 Ring Coin**
The patented Ring Coin connecting link ensures that the chain can be specified up to its full chain capacity.



- This is applicable for attachment chains until RS16B-1.
- Average increase compared to the previous generation of Lambda chain. The results are not yet confirmed for N.E.P and Heat resistant Lambda.
- The improved bush design is applicable on RF06B until RS16B.
- Heat resistant Lambda up to 230°C is available upon request.



Tsubakimoto Europe B.V.

Aventurijn 1200
3316 LB Dordrecht
The Netherlands
Tel: +31 (0)78 620 4000
E-mail: info@tsubaki.eu
Internet: tsubaki.eu

Tsubakimoto UK Ltd.

Osier Drive, Sherwood Park
Annesley, Nottingham NG15 0DX
United Kingdom
Tel: +44 (0)1623 688 700
E-mail: sales@tsubaki.co.uk
Internet: tsubaki.eu

Tsubaki Deutschland GmbH

ASTO Park Oberpfaffenhofen
Friedrichshafener Straße 1
D-82205, Gilching
Germany
Tel: +49 (0)8105 7307 100
E-mail: antriebstechnik@tsubaki.de
Internet: tsubaki.de

Other European Operations:

**Tsubaki Kabelschlepp GmbH
(Cable Carrier Systems)**

Daimlerstraße 2
D-57482 Wenden-Gerlingen
Germany
Tel: +49 (0)2762 4003 0
E-mail: info@kabelschlepp.de
Internet: kabelschlepp.de