



## SHELF MANAGEMENT SOLUTIONS

Increase overview and impulse purchases by having informative, clean and appealing shopping shelves. A neat, uniform product presentation communicates competence, organization and quality to the customers and will most likely pave the way for buying more. Further the customer associates the high quality of shelf presentation with the products sold and the shopping experience. These solutions also allow shelves

to be stocked more quickly by simplifying the restocking of shelves by your staff.

**METO has several solutions that can support you in premium shelf management.**





# ELECTRONIC SHELF LABELING (ESL)

## SHELF-MANAGMENT SOLUTIONS

- SES imagotag fixing & accessories ..... 68-99
- SOLUM fixing & accessories ..... 100-111
- PRICER fixing & accessories ..... 112-123
- FINDBOX fixing & accessories ..... 124-130







### ELECTRONIC SHELF LABELING (ESL)

You are planning to introduce electronic price labeling in your shops, retail stores or outlets? METO are working close together with vendors of electronic shelf labeling systems. METO supplies fixing solutions and accessories for these electronic shelf labeling systems. This means that METO are able to supply the right accessories for fixing electronic price systems from **ses imagotag**, **Solum**, **PRICER** and **findbox**

anywhere in your sales area. Adapters make it possible to continue using existing fixing accessories for METO price cassettes and displays.

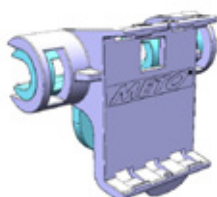
**Contact us – we support you in finding the right solution fitting exactly you outlet or shop**



**METO**  
**HIGH QUALITY**  
**FIXINGS & ACCESSORIES FOR**  
**ELECTRONIC SHELF LABELS**

**ses** imagotag

## BLISTERHOOK ADAPTER VUSION



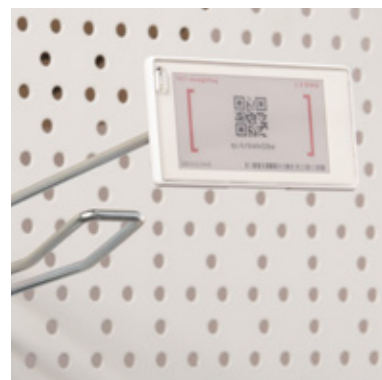
### BlisterHook adapter

**Vusion ESL 1.6", 2.2", 2.6", 2.7"**

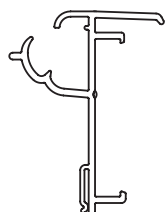
Adjustable in 3 angles with swing-back mechanism. Fits on most metal and plastic blisterhooks / pins types and brands

up to 4 – 5 mm thickness (please test with sample). Consists out of 2-parts: 1 for metal hook, 1 for ESL. Will combined and installed as one. Fit at the ESL battery case.

■ Art. no.: 9509709  
Material: PC  
Colour: Transparent  
Unit quantity: 50



## SHELF PROFILE VUSION



### Wanzl rail

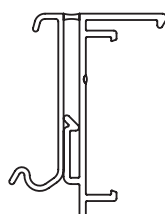
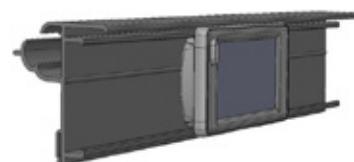
**Vusion ESL 1.6", 2.2", 2.6", 4.2", 7.4"**

The ESL will be inserted direct into the rail. With a clamp part at lower part of the rear side, to insert e.g. stoppers etc. With small roof to protect ESL against dust etc. from above.

Adjustable in 2 positions.

■ Art. no.	Length
30000503	975 mm
30000504	1,225 mm

Material: PVC  
Colour: Transparent (other colours on request MOQ 3,000 m)  
Unit quantity: 50



### Tego rail

**Vusion ESL 1.6", 2.2", 2.6", 4.2", 7.4"**

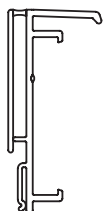
The ESL will be inserted direct into the rail. With a clamp part at lower part of the rear side, to insert e.g. stoppers etc. With small roof to protect ESL against dust etc. from above.

■ Art. no.	Length
on request	988 mm
on request	1,238 mm

Material: PVC  
Colour: Transparent (other colours on request MOQ 3,000 m)  
Unit quantity: 50



## SHELF PROFILE VUSION



### Universal rail

#### Vusion ESL 1.6", 2.2", 2.6", 4.2", 7.4"

The ESL will be inserted direct into the rail. With a clamp part at lower part of the rear side, to insert e.g. stoppers etc. With small roof to protect ESL against dust etc. from above. With 15 mm double-sided adhesive tape.

Art. no.	Length
30000530	988 mm
30000506	988 mm (without tape)
30000507	1,000 mm
30000508	1,238 mm
30000509	1,250 mm

Material: PVC

Colour: Transparent (other colours on request MOQ 3,000 m)

Unit quantity: 50



### Universal rail rigid

#### Vusion ESL 1.6", 2.2", 2.6", 4.2", 7.4"

The ESL will be placed in front.

With 12 mm double-sided adhesive tape.

Utility Patent No.: 20 2017 106 211

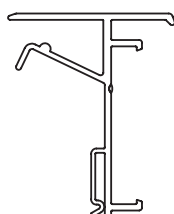
Art. no.: 9513610

Length: 998 mm

Material: PVC

Colour: Transparent (other colours on request MOQ 3,000 m)

Unit quantity: 50



### Glass rail

#### Vusion ESL 1.6", 2.2", 2.6", 4.2", 7.4"

The ESL will be inserted direct into the rail. With a clamp part at lower part of the rear side, to insert e.g. stoppers etc. With small roof to protect ESL against dust etc. from above. To attach at 5–8 mm glass shelves.

Art. no.	Length
30000821	1,000 mm
30000822	1,250 mm

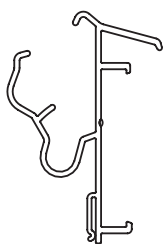
Material: PVC

Colour: Transparent (other colours on request MOQ 3,000 m)

Unit quantity: 50



## SHELF PROFILE VUSION



### TLS-H rail

**Vusion ESL 1.6", 2.2", 2.6", 4.2", 7.4"**

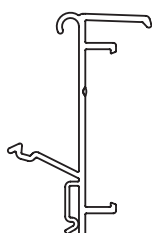
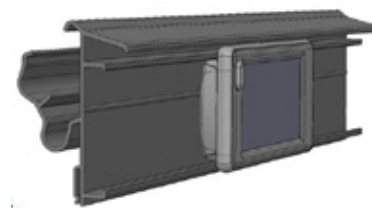
The ESL will be inserted direct into the rail. With a clamp part at lower part of the rear side, to insert e.g. stoppers etc. With small roof to protect ESL against dust etc. from above. Adjustable in 2 position. Will fit at Tego/Linde /Storebest & Harres shelves.

Art. no.	Length
30000533	988 mm
30000534	1,238 mm
30000532	1,250 mm

Material: PVC

Colour: Transparent (other colours on request MOQ 3,000 m)

**Unit quantity: 50**



### Linde rail

**Vusion ESL 1.6", 2.2", 2.6", 4.2", 7.4"**

The ESL will be inserted direct into the rail. With a clamp part at lower part of the rear side, to insert e.g. stoppers etc. With small roof to protect ESL against dust etc. from above.

Art. no.: 30000531

Length: 1,250 mm

Material: PVC

Colour: Black (other colours on request MOQ 3,000 m)

**Unit quantity: 50**



### Linde clip

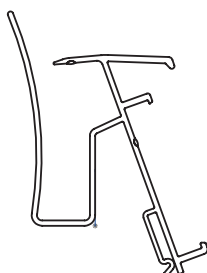
Shelf edge profile holder. Attachment clip for shelf edge profile on Linde cooling shelf.

Art. no.: 9134691

Material: POM

Colour: White

**Unit quantity: 160**



### Otto Kind rail

**Vusion ESL 1.6", 2.2", 2.6", 4.2", 7.4"**

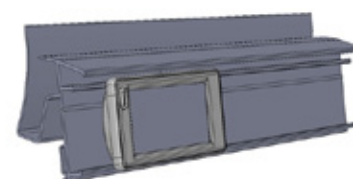
The ESL will be inserted direct into the rail. With a clamp part at lower part of the rear side, to insert e.g. stoppers etc. With small roof to protect ESL against dust etc. from above.

Art. no.	Length
on request	988 mm
on request	1,238 mm

Material: PVC

Colour: Transparent (other colours on request MOQ 3,000 m)

**Unit quantity: 50**



## SHELF PROFILE VUSION



### Wire-Rail

**Vusion ESL 1.6", 2.2", 2.6", 4.2", 7.4"**

To attach at a 5 mm wire. The ESL will be inserted direct into the rail. With paper insert on rear side to add promotion or info etc.

■ Art. no.: 9509708

Length: 54 mm

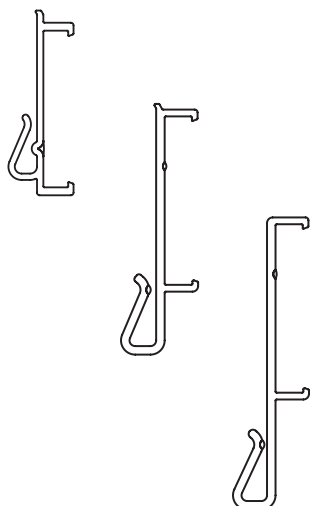
Material: PVC

Colour: Transparent (other colours on request MOQ 3,000 m)

**Unit quantity: 50**



## CLAMP RAIL FOR EXISTING RAILS (PAPER PRICE TAG)



### Clamp rail

**Vusion ESL 1.6", 2.2", 2.6", 4.2", 7.4"**

To attach at existing paper rail from below. Paper rails can be used in combination with ESL. The ESL will be inserted direct into the rail.

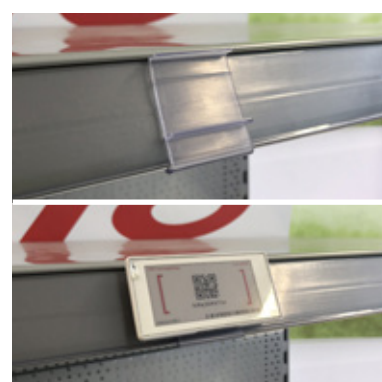
**Utility Patent No.: 20 2017 106 211**

■ Art. no.	Height	Length
9509704	26 mm	36 mm
30000535	40 mm	50 mm
30000792	40 mm	72 mm

Material: PVC

Colour: Transparent (other colours on request MOQ 3,000 m)

**Unit quantity: 50**



## SHELF-CLIPS (INDIVIDUAL FIXINGS) VUSION



### UniFix Roll

#### Vusion ESL

For shelves from 8 up to 35 mm thickness. Add clip directly on the ESL battery cap. 1 or 2 per ESL needed.

■ Art. no.: on request

Material: POM

Colour: Semi-Transparent, white

Unit quantity: 25



### GlassShelf Clip

#### Vusion ESL 1.6, 2.2, 2.6, 4.2

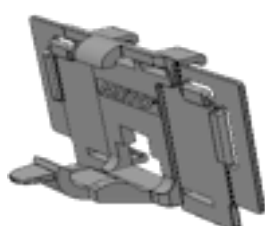
Fit the ESL in the front of Glass Shelves in vertical position. For Glass Shelves of 3 mm up to 9mm thickness. To use for e.g. drugstores and pharmacies.

■ Art. no.: 9516482

Material: PC

Colour: Transparent

Unit quantity: 50



### SmartFix Tego shelves

#### Vusion ESL 2.2, 2.6, 4.2

Adjustable in 2 positions. Add clip directly on the ESL battery cap.

■ Art. no.: on request

Material: PC

Colour: Transparent

Unit quantity: 25

## SUSPENSION PRESENTATION VUSION



### Suspension hook

#### Vusion ESL 1.6", 2.2", 2.6", 4.2", 7.4"

Click hook directly on the ESL battery cap. 2 pcs per ESL needed. For 12 mm wire.

Art. no.	Colour
9509730	Black
9513744	White

Material: POM

Unit quantity: 50



## FOOT STANDS VUSION



### Footstand small

**Vusion ESL 1.6", 2.2", 2.6", 4.2", 7.4"**

Click on battery cap, 1 or 2 per ESL needed.

■ Art. no.: 9516622

Material: PC

Colour: Transparent

**Unit quantity: 25**



### Universal holder

**Vusion ESL**

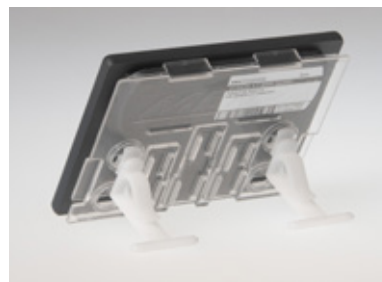
To use as a stand in combination with different adapter plate large Art. no. 9515475 The universal holder will rotate into the adapter plate. Allows to place the Vusion ESL in 2 different angles.

■ Art. no.: 8311485

Material: POM

Colour: Transparent

**Unit quantity: 25**



### Foot Stand small

**Vusion ESL**

To use as a stand in combination with different adapter plate large Art. No. 9515475 The foot stand will rotate into the adapter plate.

■ Art. no.: 9462107

Material: Lexan 163r

Colour: Transparent

**Unit quantity: 25**



### Small transparent stand

**Vusion ESL**

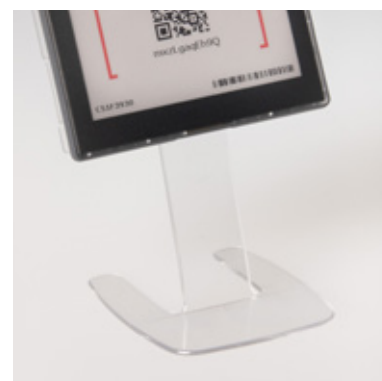
To be used in service counters (deli, meat, cheese etc.). Will be delivered with small adapter plate Art. No. 9482266.

■ Art. no.: 8327200

Material: PC

Colour: Transparent

**Unit quantity: 25**



## VARIOUS SURFACES VUSION



### Adapter plate small

#### Vusion ESL 2.2, 2.6, 4.2, 7.4

Click the plate directly on the battery cap. To fit different ses imagotag and Meto insert clips.

■ Art. no.: 9509689

Material: PC  
Colour: Transparent  
Unit quantity: 25



### Adapter plate large

#### Vusion ESL 4.2, 7.4

Click the plate directly on the battery cap. With intergrated card inserts for promotions. To fit different ses imagotag and Meto clips.

■ Art. no.: 9515475

Material: PC  
Colour: Transparent  
Unit quantity: 50



### Adapter plate large – adhesive

#### Vusion ESL 4.2, 7.4

Click the plate directly on the battery cap. With intergrated card inserts for promotions. With double sided tape to fit at various surfaces.

■ Art. no.: 9516478

Material: PC  
Colour: Transparent  
Unit quantity: 25



### Adapter plate large – magnetic

#### Vusion ESL 4.2, 7.4

Click the plate directly on the battery cap. With intergrated card inserts for promotions. With strong magnet plate to fit at (magnetic) metal surfaces.

■ Art. no.: 9516472

Material: PC  
Colour: Transparent  
Unit quantity: 25



## VARIOUS SURFACES VUSION



### Adapter plate small

#### Vusion ESL 2.2, 2.6, 4.2, 7.4

Click the plate directly on the battery cap. With intergrated card inserts for promotions. To fit different ses imagotag and Meto clips.

■ Art. no.: 9515476

Material: PC

Colour: Transparent

Unit quantity: 25



### Adapter plate small - adhesive

#### Vusion ESL 2.2, 2.6, 4.2, 7.4

Click the plate directly on the battery cap. With intergrated card inserts for promotions. With double sided tape to fit at various surfaces.

■ Art. no.: 9516503

Material: PC

Colour: Transparent

Unit quantity: 25



### Adapter plate small - magnetic

#### Vusion ESL 2.2, 2.6, 4.2, 7.4

Click the plate directly on the battery cap. With intergrated card inserts for promotions. With strong magnet plate to fit at (magnetic) metal surfaces.

■ Art. no.: 9516473

Material: PC

Colour: Transparent

Unit quantity: 25



## CLAMPS & CLIPS VUSION



### Adjustable Adapter, small insert

#### Vusion ESL

To use in combination with Meto adjustable clamps & Meto adapter plate 9509689.

■ Art. no.: 9504658

Material: PC

Colour: Transparent

Unit quantity: 25



## CLAMPS & CLIPS VUSION



### Adjustable Adapter

#### Vusion ESL

Click directly on the battery cap to use in combination with Meto adjustable clamps 9486983, 9484255, 9505167 (remove Meto clip before).

■ Art. no.: 9516621

Material: PC

Colour: Transparent

Unit quantity: 50



### Box Clamp

#### Vusion ESL

With Meto adjustable adapter. To use in combination with Meto adapter plates small 9515475, 9515476.

■ Art. no.: 9484255

Material: PA/PC

Colour: Black

Unit quantity: 10



### Transparent Clamp with adjustable Meto Adapter Vusion ESL

To use in combination with Meto adapter plates 9515476, 9515475.

■ Art. no.: 9486983

Material: PC

Colour: Transparent

Unit quantity: 25



### Price Label Clamp with adjustable Meto Adapter Vusion ESL

To use in combination with Meto adapter plates 9515476, 9515475. Adapter can also be adjusted in 45° horizontal way.

■ Art. no.: 9505167

Material: PC

Colour: Black / Transparent

Unit quantity: 25



## CLAMPS & CLIPS VUSION



### Light Clamp

#### Vusion ESL

With flexible hinge and small insert for Meto adapter plates. To use in combination with VUSION adapter plate small Art. No. 95096899.

■ Art. no.: 30000219

Material: PC

Colour: Transparent

Unit quantity: 25



### Price Label Clamp

#### Vusion ESL

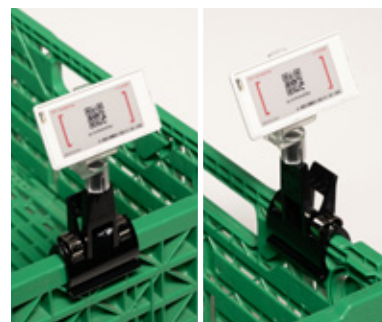
To use in combination with Meto adapter plates 9515476, 9515475. Adapter can also be adjusted in 45° horizontal way.

■ Art. no.: 30001778

Material: PC

Colour: Black/transparent

Unit quantity: 25



## PROMOTION & BRANDING VUSION



### SnapOn

#### Vusion ESL 1.6"

No print. Printed ESL frames. Can easily be clicked onto the ESL. Frames in any RAL color and optional with print (like logo, text, brand etc).

■ Art. no.: on request

Material: ABS

Colour: on request

Unit quantity: on request



### SnapOn

#### Vusion ESL 2.2"

■ Art. no.: on request

Material: ABS

Colour: on request

Unit quantity: on request



### SnapOn

#### Vusion ESL 2.6"

■ Art. no.: on request

Material: ABS

Colour: on request

Unit quantity: on request



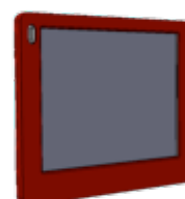
## PROMOTION & BRANDING VUSION



### SnapOn Vusion ESL 4.2"

■ Art. no.: on request

Material: ABS  
Colour: on request  
**Unit quantity: on request**



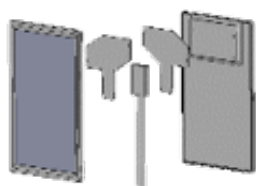
### SnapOn Vusion ESL 7.4"

■ Art. no.: on request

Material: ABS  
Colour: on request  
**Unit quantity: on request**



## G1 12.2"

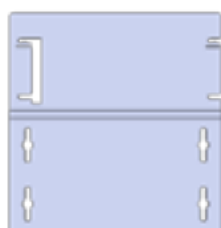


### Wire Box fixing stand G1 12.2"

Fit the 12.2 single or double sided at a special promotion wire box RAL 7035.

■ Art. no.: 9509807

Material: Steel  
Colour: on request  
**Unit quantity: 10**



### Wall mounting G1 12.2"

Fit the 12.2 at a wall (with screws, not included).

■ Art. no.: 30000693

Material: PETG  
Colour: Transparent  
**Unit quantity: 25**



### Wall mounting – magnetic G1 12.2"

Fit the 12.2 at a magnetic surface. With strong 130 x 67 mm magnet.

■ Art. no.: 30000694

Material: PETG  
Colour: Transparent  
**Unit quantity: 25**



### Transparent stand ESL 12.2"

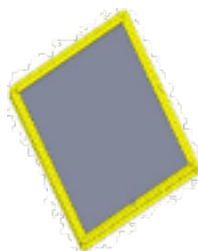
Transparent stand portrait in steep or flat angle.

■ Art. no.: on request

Material: PETG  
Colour: Transparent  
**Unit quantity: 10**



## G1 12.2"



### SnapOn 12.2"

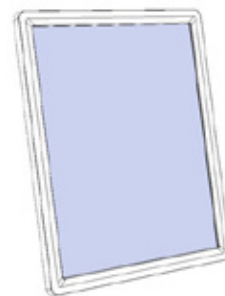
No print. Printed ESL frames. Can easily be clicked onto the ESL Frames in any RAL color and optional with print (like logo, text, brand etc).

■ Art. no.: on request

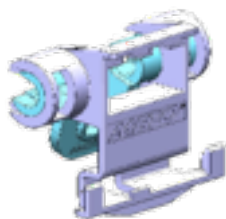
Material: ABS

Colour: on request

Unit quantity: 50



## BLISTERHOOK ADAPTER



### BlisterHook adapter G1 1.6"

Adjustable in 3 angles with swing-back mechanism. Fits on most metal and plastic blisterhooks/pins types and brands up to 4 - 5 mm thickness (please test with sample). Consists out of 2-parts: 1 for metal hook, 1 for ESL. Will combined and installed as one. Fit at the ESL battery case.

■ Art. no.: 9502848

Material: PC

Colour: Transparent

Unit quantity: 50



### BlisterHook adapter G1 2.2", 2.6", 2.7"

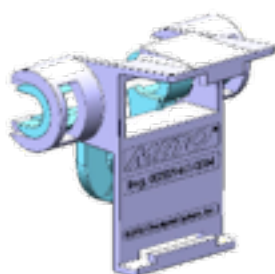
Adjustable in 3 angles with swing-back mechanism. Fits on most metal and plastic blisterhooks/pins types and brands up to 4 - 5 mm thickness (please test with sample). Consists out of 2-parts: 1 for metal hook, 1 for ESL. Will combined and installed as one. Fit at the ESL battery case.

■ Art. no.: 9502849

Material: PC

Colour: Transparent

Unit quantity: 50



### BlisterHook adapter SES S-Tag 2.2"

Adjustable in 3 angles with swing-back mechanism. Fits on most metal and plastic blisterhooks/pins types and brands up to 4 - 5 mm thickness (please test with sample). Consists out of 2-parts: 1 for metal hook, 1 for ESL. Will combined and installed as one. Fit at the ESL battery case. Design protection No. 003029461-0004.

■ Art. no.: 9497086

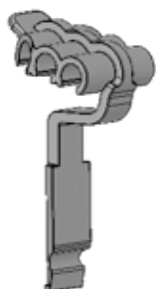
Material: PC

Colour: Transparent

Unit quantity: 50



## BLISTERHOOK ADAPTER



### 3 Position BlisterHook holder for triangle hook G1 1.6", 2.2"

Due to the 3 notches of the holder, the ESL can be attached to the triangle hook in 3 different angles. To combine with ses imagotag C-clip round, or VUSION C-Clip. Fit at the ESL battery case. Design protection No. 002949966-0012

■ Art. no.: 9488215

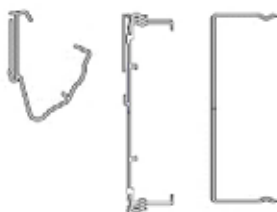
Material: PC

Colour: Transparent

Unit quantity: 100



## SHELF-PROFILES



### TLS rail G1 2.2", 2.6", 2.7"

To protect ESL front. Consists of a) TLS Carrier Rail, b) ESL C-Rail profile and c) transparent cover. Usually used at the lowest shelves. Design protection No. 002949966-0007

■ Art. no. | Length

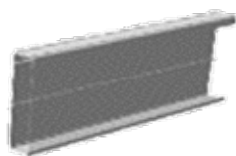
9482408 | 985 mm

9482296 | 1,230 mm

Material: PVC

Colour: Transparent (other colours on request MOQ 3,000 m)

Unit quantity: 25



### Closed rail G1 4.2"

Closed rail to protect ESL G1 4.2". Transparent front can be folded upwards. With double sided tape. to add on a flat surface. Application: usually used in fruit & vegetable department.

■ Art. no. | Length

9482408 | 1,000 mm

9498415 | 1,200 mm

9478499 | 1,240 mm

Material: PVC

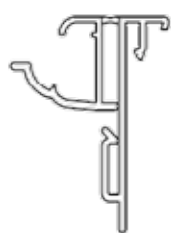
Color: Back: RAL 9007, front: Transparent

(other colours on request MOQ 3,000 m)

Unit quantity: 5



## SHELF-PROFILES



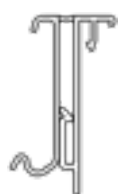
### Wanzl rail G1 1.6", 2.2", 2.6", 2.7", 4.2", 4.5"

With flexible front. To insert the ESL in combination with 2 Imagotag rail-clips. With a clamp part at rear side to adjust the rail in 2 positions.

Art. no.	Length	Unit quantity
9505712	985 mm	50
9504253	1,235 mm	50

Material: PVC

Colour: Transparent (other colours on request MOQ 3,000 m)



### Tego rail G1 1.6", 2.2", 2.6", 2.7", 4.2", 4.5"

With flexible front. To insert the ESL in combination with 2 imagotag rail-clips. With a clamp part at rear side to adjust the rail in 2 positions.

Art. no.	Length
9504174	985 mm
9504175	1,235 mm

Material: PVC

Colour: Transparent (other colours on request MOQ 3,000 m)

Unit quantity: 50



### Universal rail G1 1.6", 2.2", 2.6", 2.7", 4.2", 4.5"

With flexible front. To insert the ESL in combination with 2 imagotag rail-clips. With a clamp part at rear side to adjust the rail in 2 positions. With 15 mm double-sided adhesive tape.

Art. no.	Length	Unit quantity
9510741	1,250 mm	50
9504387	1,000 mm	50
9504187	1,000 mm	50 (no tape)

Material: PVC

Colour: Transparent (other colours on request MOQ 3,000 m)



### V2 rail G1 1.6", 2.2", 2.6", 2.7", 4.2", 4.5"

With flexible front. To insert the ESL in combination with 2 imagotag rail-clips. With a special perforation at the rear side to attach at V2 shelf.

Art. no.	Length
9511677	1,000 mm
9497366	1,320 mm

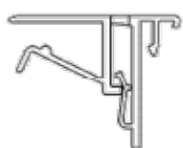
Material: PVC

Colour: Transparent (other colours on request MOQ 3,000 m)

Unit quantity: 50



## SHELF-PROFILES



### Glass rail

G1 1.6", 2.2", 2.6", 2.7", 4.2", 4.5"

With flexible front. To insert the ESL in combination with 2 imagotag rail-clips. With a clamp part at rear side to adjust the rail in 2 positions. To attach at 5–8 mm Glass shelves

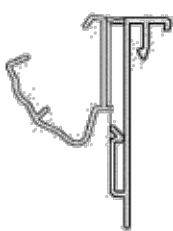
■ Art. no.: 9504258

Length: 1,000 mm

Material: PVC

Colour: Transparent (other colours on request MOQ 3,000 m)

Unit quantity: 50



### TLS rail

G1 1.6", 2.2", 2.6", 2.7", 4.2", 4.5"

With flexible front. To insert the ESL in combination with 2 imagotag rail-clips. With a clamp part at rear side to adjust the rail in 2 positions.

■ Art. no. Length

9504374 985 mm

9504373 1,235 mm

Material: PVC

Colour: Transparent (other colours on request MOQ 3,000 m)

Unit quantity: 50



### Linde rail

G1 1.6", 2.2", 2.6", 2.7", 4.2", 4.5"

With flexible front. To insert the ESL in combination with 2 imagotag rail-clips. With a clamp part at rear side to adjust the rail in 2 positions.

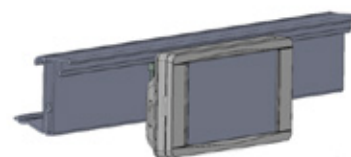
■ Art. no.: 9509985

Length: 1,000 mm

Material: PVC

Colour: Transparent (other colours on request MOQ 3,000 m)

Unit quantity: 50



### Linde clip

Shelf edge profile holder. Attachment clip for shelf edge profile on Linde cooling shelf.

■ Art. no.: 9134691

Material: POM

Colour: White

Unit quantity: 160

## SHELF-PROFILES



### Otto Kind rail

G1 1.6", 2.2", 2.6", 2.7", 4.2", 4.5"

With flexible front. To insert the ESL in combination with 2 imagotag rail-clips.

Art. no.	Length
9509368	985 mm
9509367	1,235 mm

Material: PVC

Colour: Transparent (other colours on request MOQ 3,000 m)

Unit quantity: 50



## CLAMP RAIL FOR EXISTING RAILS (PAPER PRICE TAG)



### Clamp rail

G1 1.6", 2.2", 2.6", 2.7", 4.2", 4.5"

To attach at existing paper rail from below. Paper rails can be used in combination with ESL To insert the ESL in combination with 2 imagotag rail-clips. For paper rails with 26 mm height. Utility Patent No.: 20 2017 106 211

Art. no.: 9503855

Length: 36 mm

Material: PVC

Colour: Transparent (other colours on request MOQ 3,000 m)

Unit quantity: 100



### Clamp rail

G1 1.6", 2.2", 2.6", 2.7", 4.2", 4.5"

To attach at existing paper rail from below. Paper rails can be used in combination with ESL To insert the ESL in combination with 2 imagotag rail-clips. For paper rails with 40 mm height. Utility Patent No.: 20 2017 106 211

Art. no.: 9507836

Length: 36 mm

Material: PVC

Colour: Transparent (other colours on request MOQ 3,000 m)

Unit quantity: 50



## SHELF-CLIPS (INDIVIDUAL FIXINGS)



### Shelfclip Tego

G1 2.6", 2.7", 4.2", 4.5", 6.0", 7.4"

Adjustable in 2 positions. Insert clip directly into ESL battery cap. 2 pcs per ESL needed. Inserts of 2.6" and 2.7" can be used in one direction only. Design Protection No. 002949966-0010

■ Art. no.: 9497083

Material: POM

Colour: White

Unit quantity: 25



### ShelfClip Tego

To use in combination with different. Adapter plate large or small. The ShelfClip will rotate into the adapter plate. Allows to place the G1 ESL in 2 different angles. 2 pcs per ESL needed.

■ Art. no.: 9497089

Material: POM

Colour: Transparent

Unit quantity: 25



### SmartFix Tego shelves

G1 2.6", 2.7", 4.2", 4.5", 6.0", 7.4"

Adjustable in 2 positions. Add clip directly at the ESL battery cap. Design Protection No. 002841569-0001

■ Art. no.: 9497085

Material: PC

Colour: Transparent

Unit quantity: 25



### UniFix Roll

G1 2.6", 2.7", 4.2", 4.5", 6.0", 7.4"

For shelves from 8 up to 35 mm thickness. Insert clip directly into ESL battery cap. 2 pcs per ESL needed. Inserts of 2.6" and 2.7" can be used in one direction only.

■ Art. no.: 9483319

Material: PC / POM

Colour: Transparent

Unit quantity: 25



## SUSPENSION PRESENTATION



### Suspension hook

G1 2.6", 2.7", 4.2", 4.5", 6.0", 7.4"

Insert hook directly into ESL battery cap. 2 pcs per ESL needed. Inserts of 2.7" can be used in one direction only. For 16 mm wire.

Art. no.	Colour
9492888	White
9502881	Black

Material: POM

Unit quantity: 50



### Suspension hook

G1 2.6", 2.7", 4.2", 4.5", 6.0", 7.4"

Insert hook directly into ESL battery cap. 2 pcs per ESL needed. Inserts of 2.7" can be used in one direction only. For 12 mm wire.

Art. no.	Colour
9502888	White
9502887	Black

Material: POM

Unit quantity: 50



## FOOT STANDS



### Footstand large G1 4.2", 7.4"

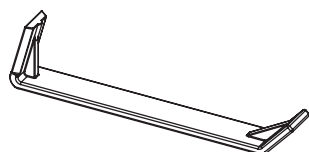
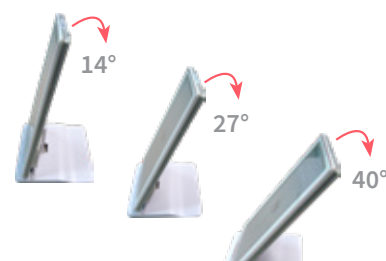
Fit ESL in portrait way, adjustable in 3 angles: 14°, 27° and 40°. Design Protection No. 002949966-0005

Art. no.: 9482264

Material: ABS

Colour: White

Unit quantity: 50



### Footstand small, antislip

G1 2.7, 4.2", 4.5", 6.0", 7.4"

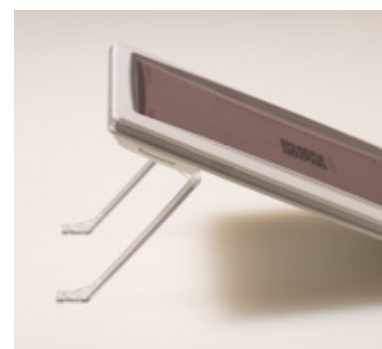
For portrait or landscape use (several options: steep angle and flat angle). Insert directly on the ESL battery cap. 2 pcs per ESL needed. With antislip bumpons for the flat angle option, for 7.4" steep angle, we advise footstand large. Design Protection No. 003029461-0001

Art. no.: 9497088

Material: PC

Colour: Transparent

Unit quantity: 50



## FOOT STANDS



### Footstand slim G1 2.6\", 2.7\"

For landscape use. Insert directly on the ESL battery cap.  
2 pcs per ESL needed.

■ Art. no.: 9482264

Material: PC

Colour: Transparent

**Unit quantity: 50**



### Universal holder

To use as a stand in combination with different adapter plate large.  
The universal holder will rotate into the adapter plate. Allows to place the G1 ESL in 2 different angles.

■ Art. no.: 8311485

Material: PVC

Colour: White

**Unit quantity: 25**



### Universal holder

To use as a stand in combination with different adapter plate large.  
The foot stand will rotate into the adapter plate.

■ Art. no.: 9462107

Material: Lexan 163r

Colour: Transparent

**Unit quantity: 25**



### Small transparent stand G1 2.7\", 4.2\"

To be used in service counters (deli, meat, cheese etc.).  
Will be delivered with small adapter plate Art. No. 9482266.

■ Art. no.: 8327200

Height: 50 mm

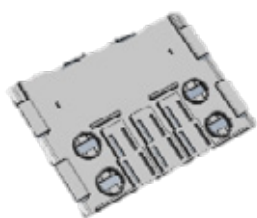
Material: PC

Colour: Transparent

**Unit quantity: 25**



## VARIOUS SURFACES



### Adapter plate large G1 4.2\", 7.4\"

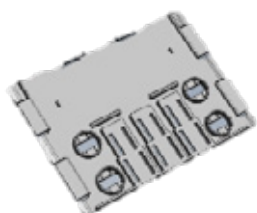
Click the plate directly on the battery cap. With intergrated card inserts for promotions. To fit different ses imagotag and Meto clips. Design protection No. 003029461-0003

■ Art. no.: 9482267

Material: PC

Colour: Transparent

Unit quantity: 25



### Adapter plate large - adhesive G1 4.2\", 7.4\"

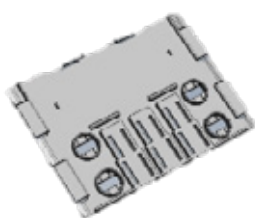
Click the plate directly on the battery cap. With intergrated card inserts for promotions. With double sided tape to fit at various surfaces. Design protection No. 003029461-0003

■ Art. no.: 9482360

Material: PC

Colour: Transparent

Unit quantity: 25



### Adapter plate large - magnetic G1 4.2\", 7.4\"

Click the plate directly on the battery cap. With intergrated card inserts for promotions. With strong magnet plate to fit at (magnetic) metal surfaces. Design protection No. 003029461-0003

■ Art. no.: 9482319

Material: PC

Colour: Transparent

Unit quantity: 25



## VARIOUS SURFACES



### Adapter plate small G1 2.6", 2.7"

Click the plate directly on the battery cap. With intergrated card inserts for promotions. To fit different SES-imagotag and Meto clips. Design protection No. 002949966-0001

■ Art. no.: 9482266

Material: PC

Colour: Transparent

**Unit quantity: 25**



### Adapter plate - adhesive G1 2.6", 2.7"

Click the plate directly on the battery cap. With intergrated card inserts for promotions. With double sided tape to fit at various surfaces. Design protection No. 002949966-0001

■ Art. no.: 9482318

Material: PC

Colour: Transparent

**Unit quantity: 25**



### Adapter plate - magnetic G1 2.6", 2.7"

Click the plate directly on the battery cap. With intergrated card inserts for promotions. With strong magnet plate to fit at (magnetic) metal surfaces. Design protection No. 002949966-0001

■ Art. no.: 9482317

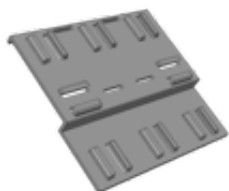
Material: PC

Colour: Transparent

**Unit quantity: 25**



## FOOT STANDS

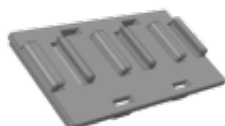


### Adapter plate large G1 4.2", 7.4"

Click the plate directly on the battery cap. To fit different ses imagotag and Meto insert clips.

■ Art. no.: 9503858

Material: PC  
Colour: Transparent  
**Unit quantity: 1**



### Adapter plate small G1 2.2"

Click the plate directly on the battery cap. To fit different ses imagotag and Meto insert clips.

■ Art. no.: 9503859

Material: PC  
Colour: Transparent  
**Unit quantity: 1**



## CLAMPS & CLIPS

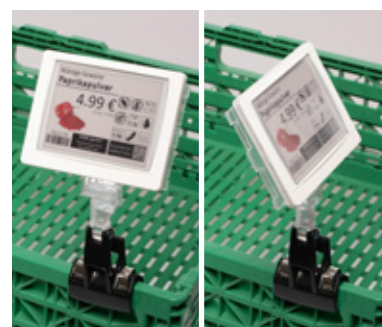


### Adjustable Adapter, insert

To use in combination with Meto adjustable clamps & Meto adapter plate 9503859.

■ Art. no.: 9504658

Material: PC  
Colour: Transparent  
**Unit quantity: 25**



### Clamp with adjustable Adapter, insert

To use in combination with Meto adjustable clamps & Meto adapter plates.

■ Art. no.: 9486983

Material: PC  
Colour: Transparent  
**Unit quantity: 25**



## CLAMPS & CLIPS



### Box Clamp

With adjustable Meto adapter. To use in combination with Meto adapter plates 9482266, 9482267.

■ Art. no.: 9484255

Material: PA/PC

Colour: Black

Unit quantity: 10



### Scorpion Clamp small with adjustable Adapter

To use in combination with Meto adapter-plates. Adapter also can be adjusted in 45° horizontal way.

■ Art. no.: 9505167

Material: PA/PC

Colour: Black

Unit quantity: 25



### Light Clamp

With flexible hinge and small insert for Meto Vision adapter plates. To use in combination with adapter plate 9503859.

■ Art. no.: 30000219

Material: PC

Colour: Transparent

Unit quantity: 25



## CLAMPS & CLIPS



### Tube fixing, angled G1 4.2", 7.4"

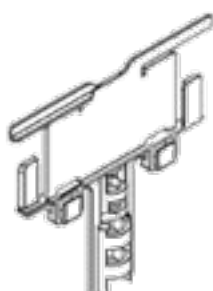
Click directly on the battery cap. With fixed angle position.  
To combine with Meto telescopic stands and apring holder.

■ Art. no.: 9505633

Material: PA

Colour: Transparent

**Unit quantity: 100**



### Tube fixing, double side G1 4.2", 7.4"

Click directly on the battery cap. To fit one or two ESL on top  
of a tube. To combine with Meto telescopic stands and apring holder.

■ Art. no.: 9512388

Material: PA

Colour: White

**Unit quantity: 50**



### Tube fixing, angled G1 4.2", 7.4"

Click directly on the battery cap. With fixed angle position.  
To combine with Meto telescopic stands and apring holder.

■ Art. no.: 9512784

Material: PA

Colour: White

**Unit quantity: 50**



## PROMOTION & BRANDING



### SnapOn G1 2.2"

No print. Printed ESL frames. Can easily be clicked onto the ESL.  
Frames in any RAL color and optional with print (like logo, text, brand etc). Design protection No. 002949966-0006

■ Art. no.: 9484753

Material: ABS

Colour: on request

**Unit quantity: 25**



### SnapOn G1 2.7"

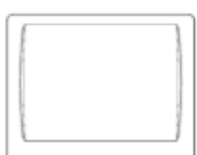
Design protection No. 002949966-0014

■ Art. no.: 9488600

Material: ABS

Colour: on request

**Unit quantity: 50**



### SnapOn G1 4.2"

Design protection No. 002949966-0003

■ Art. no.: 9488601

Material: ABS

Colour: on request

**Unit quantity: 50**



### SnapOn G1 7.4"

Design protection No. 002949966-0004

■ Art. no.: on request

Material: ABS

Colour: on request

**Unit quantity: on request**

## PROMOTION & BRANDING



### Shelf stopper 90° G1 ESL

Will be clicked in each G1 Imagotag shelf rail (like the rail clips).  
To fit cards/shelf stoppers/wobblers in 90 degrees way from shelf.

■ Art. no.: 9492676

Material: PC  
Colour: Transparent  
**Unit quantity: 50**



### Shelf stopper flat G1 ESL

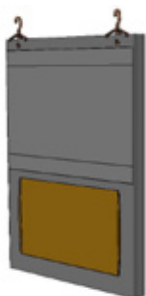
Will be clicked in each G1 Imagotag shelf rail (like the rail clips).  
To fit cards/shelf stoppers/wobblers in flat angel way from shelf.

■ Art. no.: 9492677

Material: PC  
Colour: Transparent  
**Unit quantity: 50**



## BENDED FIXINGS



### DIN A4 Beverage sign

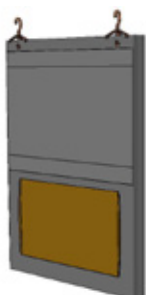
With DIN A5 paper bag on top and space to click in 7.4" ESL.  
Single side presentation.

■ Art. no.: 9497803

Material: PVC

Colour: Transparent

**Unit quantity: 10**



### DIN A4 Beverage sign for double side presentation

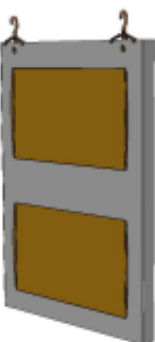
With DIN A5 paper bag on top and space to click in 7.4" ESL.  
2 suspension hooks additional needed. Double side presentation,  
two pcs needed.

■ Art. no.: on request

Material: PVC

Colour: on request

**Unit quantity: on request**



### DIN A4 Beverage sign

To click in 2x 7.4" ESL. 2 suspension hooks additional needed.

■ Art. no.: on request

Material: PVC

Colour: on request

**Unit quantity: on request**

## BLISTERHOOK ADAPTER FINDBOX



### Blister hook Adapter for all Findbox ESL

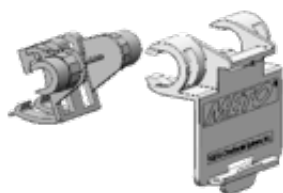
Adjustable in 3 angles with swing-back mechanism. Fits on most metal and plastic blisterhooks / pins types and brands up to 4 - 5 mm thickness (please test with sample). Consists out of 2-parts: 1 for metal hook, 1 for ESL.

■ Art. no.: 9492836

Material: PC

Colour: Transparent

**Unit quantity: 100**



### Blister hook Adapter

Special part for metal hook with flat front. Works in combination with all blister hooks front parts. Design protection No. 29603853

■ Art. no.: 9502970

Material: PC

Colour: Transparent

**Unit quantity: 50**

## CLAMP RAIL FOR EXISTING RAILS (PAPER PRICE TAG)



### Clamp rail FindBox ESL

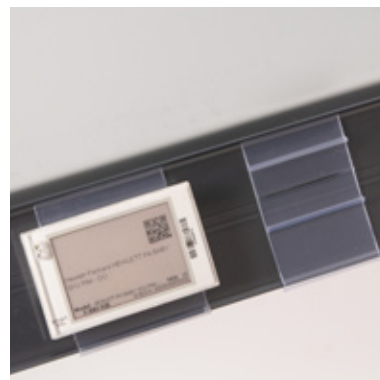
To attach at existing paper rail from below. Paper rails can be used in combination with ESL The ESL will be inserted direct into the rail. For paper rails with 70 mm height. Utility Patent No.: 20 2017 106 211

■ Art. no.: 9507922

Material: PVC

Colour: Transparent (other colours on request MOQ 3,000 m)

**Unit quantity: 50**



## CLAMP RAIL FOR EXISTING RAILS (PAPER PRICE TAG)



### Front Rail 1200 mm / Clip-Front Rail Findbox ESL

Rail and clips are delivered together. The clips are placed on the rail from below, 2 per ESL needed. The clips will be click into the rail.

■ Art. no.: 9507923 (Front rail)

Material: PVC  
Colour: Transparent  
**Unit quantity: 50**



■ Art. no.: 9507908 (Clip-Front rail)

Material: PA  
Colour: Grey  
**Unit quantity: 50**



## FOOT STANDS FINDBOX



### Universal holder

To use as a stand in combination with different adapter plate large. The universal holder will rotate into the adapter plate. Allows to place the G1 ESL in 2 different angles.

■ Art. no.: 8311485

Material: POM  
Colour: White  
**Unit quantity: 25**



### Foot Stand small

To use as a stand in combination with different adapter plate large. The foot stand will rotate into the adapter plate small 9492887.

■ Art. no.: 9462107

Material: PC  
Colour: Transparent  
**Unit quantity: 25**



## FOOT STANDS FINDBOX



### Small transparent stand

To be used in service counters (deli, meat, cheese etc.). Will be delivered with small adapter plate Art. No. 9482266.

■ Art. no.: 8327200

Height: 50 mm

Material: PC

Colour: Transparent

**Unit quantity: 25**



## VARIOUS SURFACES FINDBOX



### Adapter plate small FindBox ESL

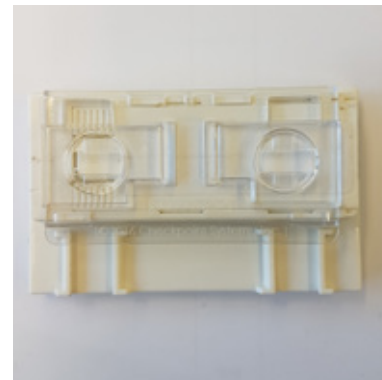
Click the plate directly on the battery cap. With integrated card inserts for promotions. To fit different ses imagotag and Meto clips.

■ Art. no.: 9492887

Material: PC

Colour: Transparent

**Unit quantity: 100**



## CLAMPS & CLIPS



### Clamp with adjustable Adapter, insert

To use in combination with Meto adjustable clamps & Meto Findbox adapter plate.

■ Art. no.: 9486983

Material: PC

Colour: Transparent

**Unit quantity: 25**



## CLAMPS & CLIPS



### Box-Clamp with adjustable Meto Adapter

To use in combination with Meto adapter plate small 9492887.

■ Art. no.: 9484255

Material: PA

Colour: Black

Unit quantity: 10



### Scorpion Clamp small with adjustable Adapter

To use in combination with Meto adapter plates. Adapter also can be adjusted in 45° horizontal way.

■ Art. no.: 9505167

Material: PA / PC

Colour: Black

Unit quantity: 25



## THE METOOL



### ses imagotag ESL removing tool

To lever out the ESL of the different Meto fixing and rails. The tool can be used for all ESL types.

■ Art. no.: 30000790

Material: PC

Unit quantity: 10

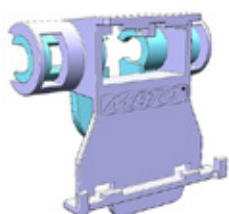




METO  
HIGH QUALITY  
FIXINGS & ACCESSORIES FOR  
ELECTRONIC SHELF LABELS

*SOLU M*

## BLISTERHOOK ADAPTER SOLUM



### BlisterHook adapter

**M2 1.6", 2.2", 2.7", 2.9", 3.3"**

Adjustable in 3 angles with swing-back mechanism. Fits on most metal and plastic blisterhooks / pins types and brands up to 4 – 5 mm thickness (please test with sample). Consists out of 2-parts: 1 for metal hook, 1 for ESL. Will combined and installed as one. Fit at the ESL battery case.

■ Art. no.: 9501007

Material: PC  
Colour: Transparent  
**Unit quantity: 100**



### BlisterHook adapter light

**M2 1.6", 2.2", 2.7", 2.9", 3.3"**

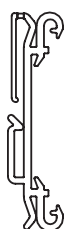
Can be placed at standard T-Metal hooks. With fixed angle and swing back mechanism (please test with sample). Consists out of 1-part. Fit at the ESL battery case.

■ Art. no.: 30001251

Material: PC  
Colour: Transparent  
**Unit quantity: 100**



## SHELF PROFILE SOLUM



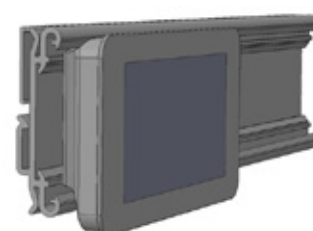
### Universal rail

**SoluM ESL**

With flexible front. With a additional clamp at the rear side to adjust the rail in 2 positions. Can be combined with 15 mm double-sided adhesive tape.

■ Art. no.	Length
9503873	985 mm
9503872	1,235 mm

Material: PVC  
Colour: Transparent (other colours on request MOQ 3,000 m)  
**Unit quantity: 50**



## SHELF PROFILE SOLUM



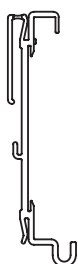
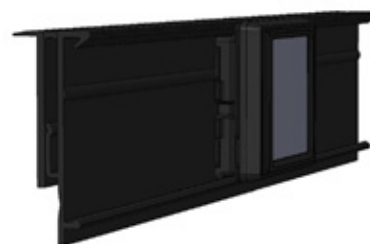
### Universal rail, with tape

#### SoluM ESL

With flexible front. With a clamp part at rear side to adjust the rail in different positions (additional fixing insert is needed to adjust the angle). Will be combined with 15 mm double-sided adhesive tape.

■ Art. no.: on request

Length: 988 mm  
Material: PVC  
Colour: RAL 9011  
**Unit quantity: 50**



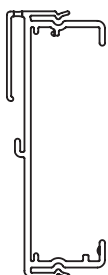
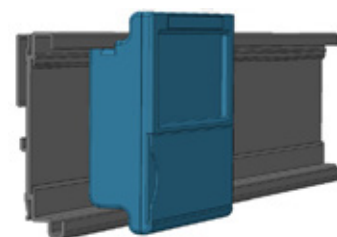
### Universal rail, segmented ESL

#### SoluM ESL

With flexible front. Can be combined with 15 mm double-sided adhesive tape. Only in combination with the segmented ESL. 985 mm.

■ Art. no.: 9484503

Length: 985 mm  
Material: PVC  
Colour: Transparent (other colours on request MOQ 3,000 m)  
**Unit quantity: 50**



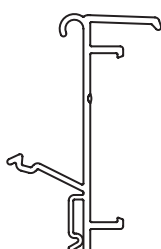
### Cover rail

#### M1 2.9"

The ESL will be inserted direct into the rail. The ESL will be covered from top and front transparent via front cover.

■ Art. no.	Length
9494011	988 mm
9478499	1,240 mm

Material: PVC  
Colour: Transparent (other colours on request MOQ 3,000 m)  
**Unit quantity: 50**



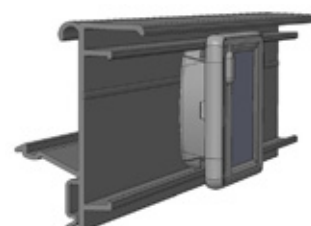
### Linde rail

#### SoluM M2

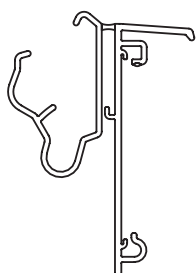
The ESL will be inserted direct into the rail. With a clamp part at lower part of the rear side, to insert e.g. stoppers etc. With small roof to protect ESL against dust etc. from above.

■ Art. no.: on request

Material: PVC  
Colour: Transparent (other colours on request MOQ 3,000 m)  
**Unit quantity: 50**



## SHELF PROFILE SOLUM



### TLSH rail

#### SoluM M2

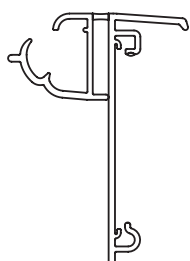
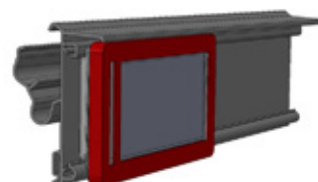
The ESL will be inserted direct into the rail. With a clamp part at lower part of the rear side, to insert e.g. stoppers etc. With small roof to protect ESL against dust etc. from above. Adjustable in 2 position. Will fit at Tego/Linde/Storebest & Harres shelves.

■ Art. no.: on request

Material: PVC

Colour: Transparent (other colours on request MOQ 3,000 m)

Unit quantity: 50



### Wanzl rail

#### SoluM M2

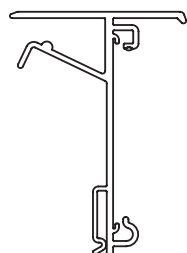
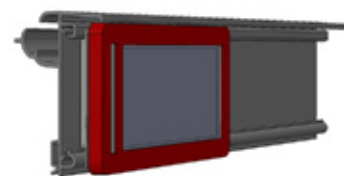
The ESL will be inserted direct into the rail. With a clamp part lower part of the rear side, to insert e.g. stoppers etc. With small roof to protect ESL against dust etc. from above. Adjustable in 2 positions.

■ Art. no.: on request

Material: PVC

Colour: Transparent (other colours on request MOQ 3,000 m)

Unit quantity: 50



### Glass rail

#### SoluM M2

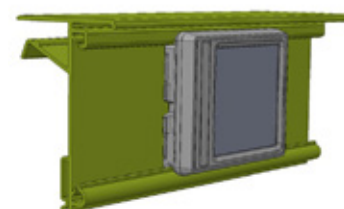
The ESL will be inserted direct into the rail. With a clamp part at lower part of the rear side, to insert e.g. stoppers etc. With small roof to protect ESL against dust etc. from above. To attach at 5 - 8 mm glassshelves.

■ Art. no.: on request

Material: PVC

Colour: Transparent (other colours on request MOQ 3,000 m)

Unit quantity: 50



### Glass rail

#### SoluM M2

The ESL will be inserted direct into the rail. With flexible front. With a clamp part at rear side to adjust the rail in different positions. (Additional fixing insert is needed to adjust the angle). To attach at 5 - 8 mm glass shelves.

■ Art. no.: on request

Length: 1,000 mm

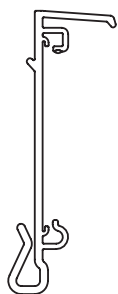
Material: PVC

Colour: RAL 9011

Unit quantity: 50



## SHELF PROFILE SOLUM



### Clamp rail

#### SoluM M2

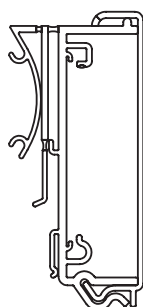
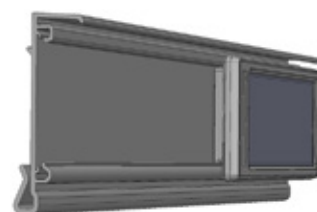
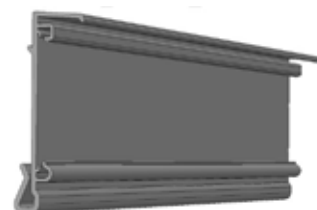
To attach at existing paper rail from below. Paper rails can be used in combination with ESL. With small roof to protect ESL against dust etc. from above. Direct insert of the ESL. For paper rails with 40mm height.

■ Art. no.: on request

Material: PVC

Colour: Transparent (other colours on request MOQ 3,000 m)

Unit quantity: 50



### Cover rail

#### M2 1.6“, 2.2“, 2.9“

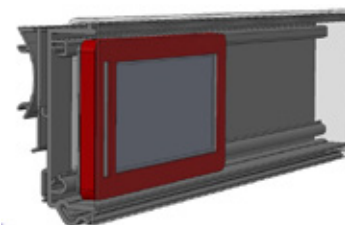
To protect the ESL against impact. Fit at P25 shelf, adjustable in 2 positions. By cutting the rear part for P25, it can be used in combination with tape to glue at shelf front. With transparent front cover. Front cover will lock in closed position (to open with a tool).

■ Art. no.	Length
30000760	1,318 mm
30000761	1,245 mm

Material: PVC

Colour: Transparent (other colours on request MOQ 3,000 m)

Unit quantity: 50



### P25/ Hermes rail

#### M2 1.6“, 2.2“, 2.9“

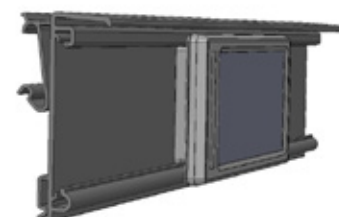
With small roof to protect ESL against dust etc. from above. Direct insert of the ESL.

■ Art. no.: on request

Material: PVC

Colour: Transparent (other colours on request MOQ 3,000 m)

Unit quantity: 50



## SUSPENSION PRESENTATION SOLUM



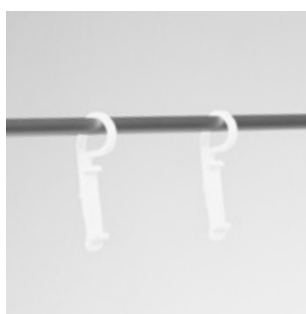
### Suspension hook, ø 12 mm

#### SoluM ESL

Insert hook directly into ESL battery cap. 2 pcs per ESL needed.  
Can be used in one direction only.

■ Art. no.: 8329802

Material: POM  
Size: ø 12 mm  
Colour: White  
**Unit quantity: 50**



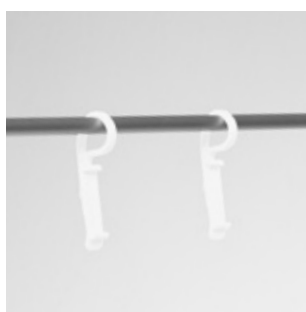
### Suspension hook, ø 16 mm

#### SoluM ESL

Insert hook directly into ESL battery cap. 2 pcs per ESL needed.  
Can be used in one direction only.

■ Art. no.: 8329803

Material: POM  
Size: ø 16 mm  
Colour: White  
**Unit quantity: 50**



### Suspension hook

#### M2 2.9", 3.3", 5.8", 6.0", 7.4"

Insert hook directly into ESL battery cap. 2 pcs per ESL needed.  
Inserts of 2.7" can be used in one direction only.

■ Art. no.: on request

Material: POM  
Size: ø 16 mm  
Colour: White  
**Unit quantity: 50**



## FOOT STANDS SOLUM



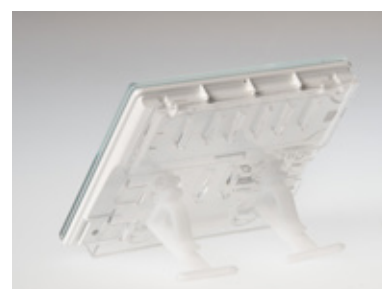
### Universal holder

#### SoluM ESL

To use as a stand in combination with different Meto adapter plates. The universal holder will rotate into the adapter plate. Allows to place the SoluM ESL in 2 different angles.

■ Art. no.: 8311485

Material: POM  
Colour: Transparent  
Unit quantity: 25



### Small transparent stand

#### SoluM ESL

To be used in service counters (deli, meat, cheese etc.). Will be delivered with small adapter plate Art. No.9515476.

Art. no.	Height
8327200	Ø 5 mm
8327201	Ø 10 mm

Material: PC  
Colour: Transparent  
Unit quantity: 25



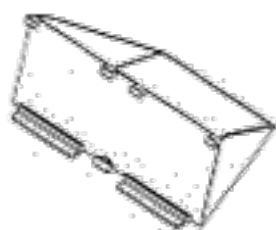
### Foot Stand small

#### SoluM ESL

To use as a stand in combination with different Meto adapter plates. The foot stand will rotate into the adapter plate.

■ Art. no.: 9462107

Material: Lexan 163r  
Colour: Transparent  
Unit quantity: 25



### Footstand large

#### M2 6.0", 7.4"

Fit ESL in portrait way, simply click on battery case.

■ Art. no.: on request

Material: ABS  
Colour: Transparent  
Unit quantity: 25



## FOOT STANDS SOLUM



### Footstand large, adjustable

**M2 4.2", 6.0", 7.5"**

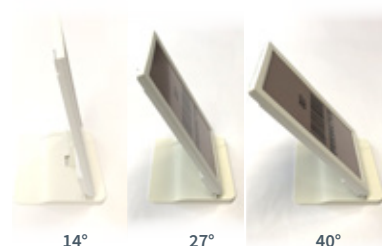
Fit 7.5" ESL in portrait way, 4.2" & 6.0" in landscape way.  
Adjustable in 3 angles: 14°, 27° and 40°.

■ Art. no.: 30001270

Material: ABS

Colour: Transparent

Unit quantity: 25



## VARIOUS SURFACES SOLUM



### Adapterplate large

**M2 4.2", 6.0", 7.5"**

Click the plate directly on the battery cap. With integrated card inserts for promotions.

■ Art. no.: 30001253

Material: PC

Colour: Transparent

Unit quantity: 100



### Adapterplate large - adhesive

**M2 4.2", 6.0", 7.5"**

Click the plate directly on the battery cap. With integrated card inserts for promotions. With double sided tape to fit at various surfaces.

■ Art. no.: 30001258

Material: PC

Colour: Transparent

Unit quantity: 100



### Adapterplate large - magnetic

**M2 4.2", 6.0", 7.5"**

Click the plate directly on the battery cap. With integrated card inserts for promotions. With strong magnet plate to fit at (magnetic) metal surfaces.

■ Art. no.: 30001259

Material: PC

Colour: Transparent

Unit quantity: 100



## VARIOUS SURFACES SOLUM



### Adapter plate small

#### M2 ESL

Click the plate directly on the battery cap. With integrated card inserts for promotions. To fit different Meto fixings.

■ Art. no.: 9484502

Material: PC

Colour: Transparent

Unit quantity: 25



### Adapter plate small - adhesive

#### M2 ESL

Click the plate directly on the battery cap. With integrated card inserts for promotions. With double sided tape to fit at various surfaces.

■ Art. no.: on request

Material: PC

Colour: Transparent

Unit quantity: 25



### Adapter plate small - magnetic

#### M2 ESL

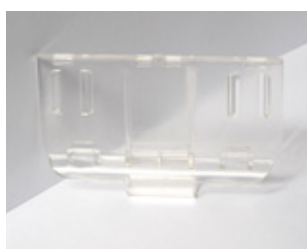
Click the plate directly on the battery cap. With integrated card inserts for promotions. With strong magnet plate to fit at (magnetic) metal surfaces.

■ Art. no.: on request

Material: PC

Colour: Transparent

Unit quantity: 25



### Adapter plate for adjustable clamp

#### M2 ESL SoluM 2.9", 3.3", 4.2", 6.0", 7.4"

To use in combination with different Meto clamps like 9486983, 9484255, 95150167.

■ Art. no.: 30000706

Material: PC

Colour: Transparent

Unit quantity: 25



## CLAMPS SOLUM



### Box-Clamp with adjustable Adapter, insert **SoluM ESL**

To use in combination with Meto adjustable clamps & Meto SoluM adapter plates.

■ Art. no.: 9484255

Material: PA/PC

Colour: Black

Unit quantity: 25



### Clamp with adjustable Adapter, insert **SoluM ESL**

To use in combination with Meto adjustable clamps & Meto SoluM adapter plates.

■ Art. no.: 9486983

Material: PC

Colour: Transparent

Unit quantity: 25



### Scorpion Clamp small with adjustable Adapter **SoluM ESL**

To use in combination with Meto adapter plates. Adapter also can be adjusted in 45° horizontal way.

■ Art. no.: 9505167

Material: PA/PC

Colour: Black

Unit quantity: 25



### PROMOTION & BRANDING SOLUM



#### SnapOn

##### SoluM ESL 1.6"

No print. Printed ESL frames. Can easily be clicked onto the ESL. Frames in any RAL color and optional with print (like logo, text, brand etc).

■ Art. no.: on request

Material: ABS

Colour: on request

Unit quantity: on request



#### SnapOn

##### SoluM ESL 2.2"

No print. Printed ESL frames. Can easily be clicked onto the ESL. Frames in any RAL color and optional with print (like logo, text, brand etc).

■ Art. no.: on request

Material: ABS

Colour: on request

Unit quantity: on request



#### SnapOn

##### SoluM ESL 2.9"

No print. Printed ESL frames. Can easily be clicked onto the ESL. Frames in any RAL color and optional with print (like logo, text, brand etc).

■ Art. no.: on request

Material: ABS

Colour: on request

Unit quantity: on request



#### SnapOn

##### SoluM ESL 4.2"

No print. Printed ESL frames. Can easily be clicked onto the ESL. Frames in any RAL color and optional with print (like logo, text, brand etc).

■ Art. no.: on request

Material: ABS

Colour: on request

Unit quantity: on request



## PROMOTION & BRANDING SOLuM



### Shelf Stopper **SoluM ESL M1, M2**

To fix at SoluM shelf edge profile and present preprinted crown.

■ Art. no.: 9473973

Material: PC

Colour: Transparent

Unit quantity: on request



## THE METOOL



### Removing tool **SoluM ESL**

To lever out the ESL of the different Meto fixing and rails.  
The tool can be used for all ESL types.

■ Art. no.: 30000790

Material: PC

Unit quantity: 10





**METO**  
**HIGH QUALITY**  
**FIXINGS & ACCESSORIES FOR**  
**ELECTRONIC SHELF LABELS**

**PRICER** 

***METO***<sup>®</sup>

your retail label expert

## BLISTERHOOK ADAPTER



### BlisterHook adapter

#### PRICER HD small, medium, large

Adapter for many types of blister hook (T-shape) with adjustable Angle (4 positions).

■ Art. no.: 9461959

Material: PC

Colour: Transparent

Unit quantity: 100



### Peghook adapter

#### HD small

On blister hook with 6 mm diameter, cross wire at the front and blister hook with T-shaped extension arm, 6 mm diameter, cross wire at the front of the laying wire. With angle adjustment for optimum readability at any height. It is theft proof.

■ Art. no.: 9179491

Material: POM

Colour: Body: Transparent,

Adaptor: White

Unit quantity: 50



## SHELF PROFILE



### Wanzl rail

#### HDS / HDL / HDM

The ESL will be inserted direct into the rail. With a clamp part at lower part of the rear side, to insert e.g. stoppers etc. With small roof to protect ESL against dust etc. from above. Adjustable in 2 positions.

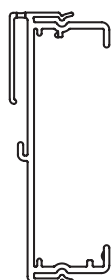
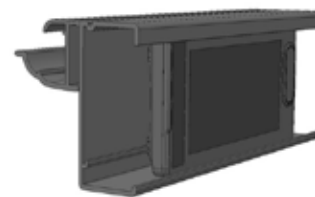
■ Art. no.: on request

Length: 975 mm

Material: PVC

Colour: Transparent (other colours on request MOQ 3,000 m)

Unit quantity: 50



### Closed ESL rail HDL & Cover

The ESL will be inserted direct into the rail and covered from top and front transparent via front cover.

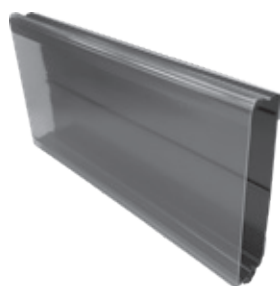
■ Art. no.: 9494011

Length: 985 mm

Material: PVC

Colour: Transparent (other colours on request MOQ 3,000 m)

Unit quantity: 50



### Closed rail

#### HD 110

The ESL will be inserted direct into the rail and covered from top and front transparent via front cover.

Art. no.	Length
9478580	1,000 mm
9498415	1,200 mm
9478499	1,240 mm

Material: PVC

Colour: Transparent, rear side grey aluminum RAL 9007

Unit quantity: 5



## HANGING PRESENTATION



### Suspension hook, Ø 12 mm

To use in combination with different adapter plates.  
2 pcs per ESL needed.

■ Art. no.: 8329802

Material: POM  
Size: Ø 12 mm  
Colour: White  
**Unit quantity: 50**



### Suspension hook, Ø 16 mm

To use in combination with different adapter plates.  
2 pcs per ESL needed.

■ Art. no.: 8329803

Material: POM  
Size: Ø 16 mm  
Colour: White  
**Unit quantity: 50**



### Suspension hook, Ø 12 mm

To use in combination with different adapter plates.  
2 pcs per ESL needed.

■ Art. no.: 9211569

Material: POM  
Size: Ø 12 mm  
Colour: Black  
**Unit quantity: 50**



### Suspension hook, Ø 16 mm

To use in combination with different adapter plates.  
2 pcs per ESL needed.

■ Art. no.: 8372524

Material: POM  
Size: Ø 16 mm  
Colour: Black  
**Unit quantity: 50**



## FOOT STANDS



### Universal holder

#### PRICER ESL

To use as a stand in combination with different adapter plate large Art. no. 9462106. The universal holder will rotate into the adapter plate. Allows to place the PRICER ESL in 2 different angles.

■ Art. no.: 8311485

Material: POM  
Colour: Transparent  
Unit quantity: 25



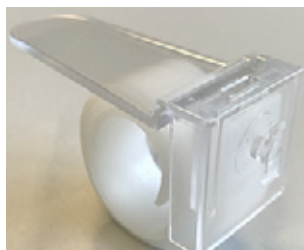
### Footstand (landscape & portrait use)

#### DM 200

Footstand for HD 200. Installation in portrait and landscape format possible.

■ Art. no.: 9467978

Material: POM  
Colour: White  
Unit quantity: 25



### UniFix Roll

#### HDS/ HDL/ HDM

For shelves from 8 up to 35 mm thickness. Will be rotated into the adapter plate. 2 pcs per ESL needed.

■ Art. no.: 8312162

Material: PC/ POM  
Colour: Transparent  
Unit quantity: 25



## FOOT STANDS



### Small transparent stand

To be used in service counters (deli, meat, cheese etc.).  
Will be delivered with small adapter plate Art. no. 9462100.

■ Art. no.: 8327200

Height: 5 cm  
Material: PC  
Colour: Transparent  
**Unit quantity: 25**

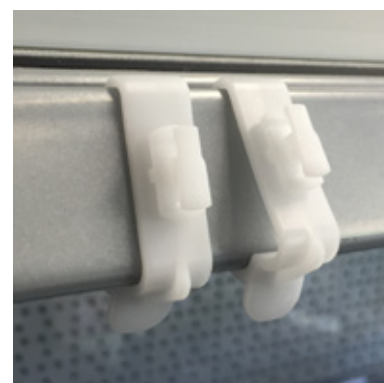


### ShelfClip Tego

To use in combination with different Adapter plate large 9462106 or small Art no. 9462100. The ShelfClip will rotate into the adapter plate. Allows to place the ESL in 2 different angles. 2 pcs per ESL needed.

■ Art. no.: 9497084

Material: POM  
Colour: Transparent  
**Unit quantity: 25**



### Foot Stand small

#### PRICER ESL

To use as a stand in combination with different adapter plate large Art. no. 9462106 The foot stand will rotate into the adapter plate.

■ Art. no.: 9462107

Material: Lexan 163r  
Colour: Transparent  
**Unit quantity: 25**



## VARIOUS SURFACES



### Adapterplate large

**HD 110, HD 200**

Click the plate directly on the battery cap. With intergrated card inserts for promotions. To fit different Meto clips.

■ Art. no.: 9462106

Material: PC  
Colour: Transparent  
Unit quantity: 25



### Adapterplate large - adhesive

**HD 110, HD 200**

Click the plate directly on the battery cap. With intergrated card inserts for promotions. With double sided tape to fit at various surfaces.

■ Art. no.: 9461953

Material: PC  
Colour: Transparent  
Unit quantity: 25



### Adapterplate large - magnetic

**HD 110, HD 200**

Click the plate directly on the battery cap. With intergrated card inserts for promotions. With strong magnet plate to fit at (magnetic) metal surfaces.

■ Art. no.: 9463792

Material: PC  
Colour: Transparent  
Unit quantity: 25



### Adapterplate small

**HD small, medium, large**

Click the plate directly on the battery cap. With intergrated card inserts for promotions. To fit different Meto clips.

■ Art. no.: 9462100

Material: PC  
Colour: Transparent  
Unit quantity: 25



## VARIOUS SURFACES



### Adapterplate small – adhesive

#### HD small, medium, large

Click the plate directly on the battery cap. With integrated card inserts for promotions. With double sided tape to fit at various surfaces.

■ Art. no.: 9472084

Material: PC

Colour: Transparent

Unit quantity: 25



### Adapterplate small - magnetic

#### HD small, medium, large

Click the plate directly on the battery cap. With integrated card inserts for promotions. With strong magnet plate to fit at (magnetic) metal surfaces.

■ Art. no.: 9466794

Material: PC

Colour: Transparent

Unit quantity: 25



### Back plate, flexible

#### HD 200

Click the plate directly on the battery cap.

■ Art. no.: 9468855

Material: PC

Colour: Transparent

Unit quantity: 25



### Back plate, flexible - adhesive

#### HD 200

Click the plate directly on the battery cap. With double sided tape to fit at various surfaces.

■ Art. no.: 9472086

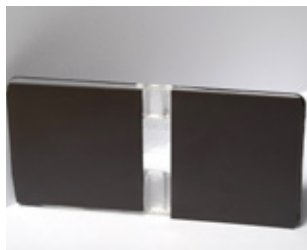
Material: PC

Colour: Transparent

Unit quantity: 25



## VARIOUS SURFACES



### Back plate, flexible - magnetic

#### HD 200

Click the plate directly on the battery cap. With strong magnet plate to fit at (magnetic) metal surfaces.

■ Art. no.: 9472085

Material: PC  
Colour: Transparent  
Unit quantity: 25



## CLAMPS & CLIPS



### Transparent Clamp

With adjustable Meto adapter, to use in combination with Meto adapter plates.

■ Art. no.: 9486983

Material: PC  
Colour: Transparent  
Unit quantity: 25



### Box-Clamp

With adjustable Meto adapter, to use in combination with Meto adapter plates.

■ Art. no.: 9484255

Material: PC  
Colour: Transparent  
Unit quantity: 25



### Price Label Clamp

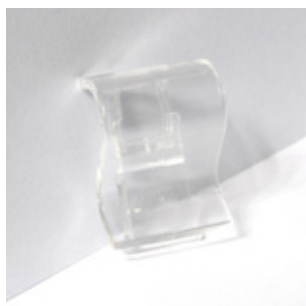
With adjustable Meto adapter, to use in combination with Meto adapter plates. Adapter also can be adjusted in 45° horizontal way.

■ Art. no.: 9505167

Material: PA/PC  
Colour: Transparent  
Unit quantity: 25



## CLAMPS & CLIPS



### Cardboard clamp, smal

**HD 110, HD 200**

To fix the ESL on boxes. Attachment to adapter plate, small art. no. 9462100.

■ Art. no.: 9475217

Material: PC  
Colour: Transparent  
Unit quantity: 25



## SNAP-ON



Print examples

### SnapOn

No print. Printed ESL frames. Can easily be clicked onto the ESL. Frames in any RAL color and optional with print (like logo, text, brand etc).

■ Art. no.	SnapOn Type
on request	SmartTag HD small
on request	SmartTag HD medium
on request	SmartTag HD large
on request	HD 110
on request	HD 110 new
on request	HD 200

Material: PC Macrolon  
Unit quantity: On request



Print examples

## SNAP-ON



9515980



9515986

### SnapOn with Crowner Insert

No print. Printed ESL frames. Can easily be clicked onto the ESL. Frames in any RAL color and optional with print (like logo, text, brand etc).

Art. no.	SnapOn Type	Colour
9515980	SmartTag HDS	transparent
9515982	SmartTag HDS	black
9515983	SmartTag HDS	RAL 7001
9515982	SmartTag HDS	RAL 5008
9515986	SmartTag HDM	RAL 7001
9515987	SmartTag HDM	RAL 5008

Material: PC

Unit quantity: On request



9515980



9515986

## THE METOOL



### Removing tool

#### PRICER ESL

To lever out the ESL of the different Meto fixing and rails. The tool can be used for all ESL types.

Art. no.: 30000790

Material: PC

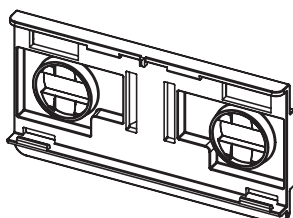
Unit quantity: 10







**METO**  
**HIGH QUALITY**  
**FIXINGS & ACCESSORIES FOR**  
**ELECTRONIC SHELF LABELS**  
**findbox**

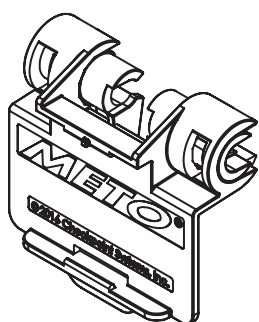
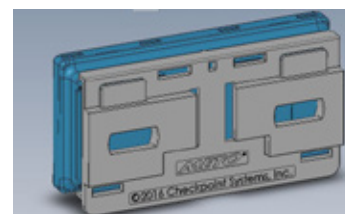


## Adapter plate, small

Adapter plate for Findbox Electronic Shelf Labels 2.2, 2.7, 4.2, 7.5. Simply click the plate onto the label and attach to the shelf with METO shelf accessories.

■ Art. no.: 9492887

Material: PC  
Size: 68 x 36 mm  
Colour: Transparent  
**Unit quantity: 100**

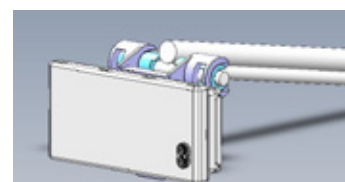


## Peghook adapter for Findbox 2.2

Adapter for all kinds of peghooks with adjustable angle. Consists of two pieces.

■ Art. no.: 9492836

Material: PC  
Colour: Transparent  
**Unit quantity: 100**

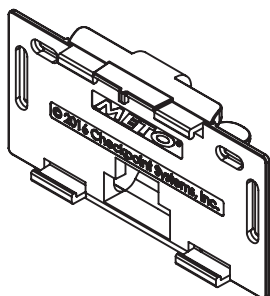


## Peghook adapter for Findbox ESL

Adapter for all kinds of peghooks with adjustable angle (5 positions).

■ Art. no.: 9461959

Material: PC Macrolon  
Colour: Transparent  
**Unit quantity: 25**

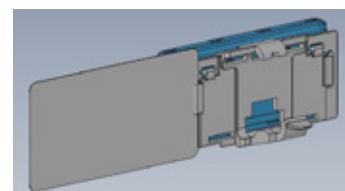


## Smart clip 2.7

Adjustable fixing device to fit Findbox 2.7 at Tego shelves. With crowner insert (right / left hand side).

■ Art. no.: On request

Material: PC  
Colour: Transparent  
**Unit quantity: 50**



## Adapter plate, small

Adapter plate for Findbox Electronic Shelf Labels. Simply click the plate onto the label and attach to the shelf with METO shelf accessories.

■ Art. no.: 9462100

Material: PC Macrolon  
Size: 58 x 41 mm  
Colour: Transparent  
**Unit quantity: 25**



## Security hooks

Fixing device for PromoSign cassettes, for attachment to wire baskets, tubes or similar. Slide in fixing at ESL back plate Art. no. 9488908.

- Art. no.: 8329802 - 12 mm
- Art. no.: 8329803 - 16 mm

Material: POM  
Colour: White  
Unit quantity: 50



## Box Clamp small

To fix METO cassettes and ESL Tags (via back plate) at card boxes. Slide in fixing at ESL back plate Art. no. 9474056, 9474054, 9488908, 948502.

- Art. no.: 9475217

Material: PC  
Colour: Transparent  
Unit quantity: 25

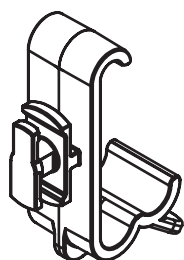


## PromoSign individual stand

To be used in service counters (delicatessen, meat, cheese etc.). Height till the lower edge of the cassette – see behind Art.no.

- Art. no.: 8327200 5 cm
- Art. no.: 8327201 10 cm
- Art. no.: 8328007 15 cm

Material: PC  
Colour: Transparent  
Unit quantity: 25

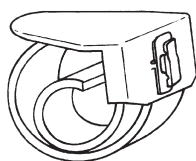


## Shelf clip Tego, adjustable

Adapter to fix in combination with adapter plates at Tego shelf. Adjustable in two positions.

- Art. no.: 9482802

Material: POM  
Colour: White  
Unit quantity: 100



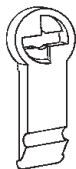
## Unifix rolls

Fixing device for shelf frames, consisting of a transparent holder and a white "snap-in" roll with spring effect, with which the frame can be attached to all types of shelving.

- Art. no.: 8312162

Material: Polycarbonate / POM  
Size: 77 x 31 x 45 mm  
Colour: Semi-transparent, white  
Unit quantity: 25





## Eco adaptor, fixed

Fixing device to insert at FindBox ESL  
For use as stand please combine with Universal Holder (8311485).

■ Art. no.: 8329563

Material: POM  
Colour: White  
**Unit quantity: 25**

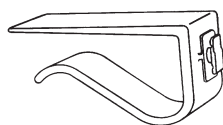


## Universal holder

For use as a stand (in combination with EcoAdapter (8329563).  
Or to fix FindBox Electronic Shelf Labels to glass panels or as a spacer for baskets. To be used in combination with AdapterPlates small (949288) or (9462100).

■ Art. no.: 8311485

Material: POM  
Size: 29 x 44 x 24 mm  
Colour: White  
**Unit quantity: 25**



## Shelf edge clips

To fix Findbox Electronic Shelf Labels to wooden or glass shelf edges with a thickness of 20 – 32 mm. To be used in combination with adapter plates small (9462100) or large (9462106).

■ Art. no.: 8312161

Material: Polycarbonate  
Size: 65 x 19 x 37 mm  
Colour: Transparent  
**Unit quantity: 25**



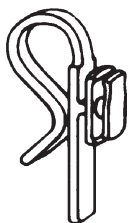
## Swingholder with 6 kg magnet

Fixing device, consisting of a 6 kg magnet and snap-in holder.  
To be used in combination with adapter plates small (9462100) or large (9462106).

■ Art. no.: 8311449

Material: POM (swingholder)  
Size: 109 x 43 x 34 mm  
Colour: White  
**Unit quantity: 25**





## Hook for wire baskets

To fit Findbox Electronic Shelf Labels to wire baskets or glass panels.  
To be used in combination with adapter plates small (9462100)  
or large (9462106).

■ Art.no.: 8311484

Material: POM  
Size: 34 x 9 x 20 mm  
Colour: White  
**Unit quantity: 25**



## Clip for fruit & vegetable box

Clip for fixing METO price cassettes to boxes and trays.  
With insertion on backside for promotion tickets.

■ Art.no.: 9468506

Material: Polyamid  
Colour: black  
**Unit quantity: 50**

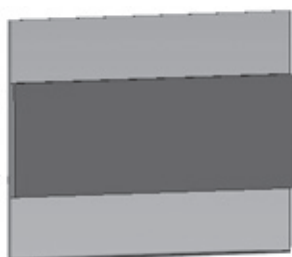
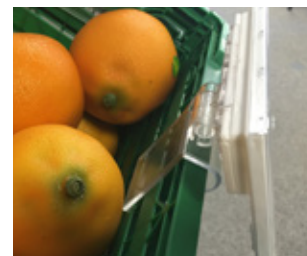


## Fruit & vegetable box clamp

Clip for fixing METO price cassettes to boxes and trays.

■ Art.no.: 9484255

Material: PC  
Colour: Transparent  
**Unit quantity: 25**

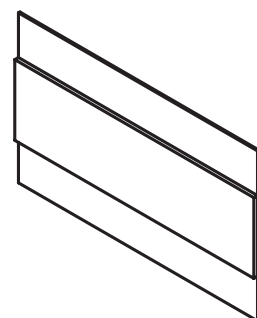


## PVC connector LightGuide

Adapter to add Imagotag S-Tag 2.2 at existing FindBox BlisterHook  
holder, with double sided tape to fit adapter at S-Tag.

■ Art.no.: 9495828

Material: PVC  
Colour: Transparent  
**Unit quantity: 100**



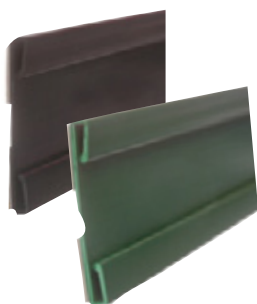
## Foot stand, small

For PRICER Electronic Shelf Labels (Smart Tag HD, small, medium, large and  
DM/HD 110) presented as stand-up displays (portrait and landscape).  
To be used in combination with adapter plates small (9462100) or large  
(9462106).

■ Art. no.: 9462107

Material: Styrolux  
Size: 35 x 35 x 35 mm  
Colour: Transparent  
**Unit quantity: 25**





### Open holding rail

Price rail for holding all types of PromoSign cassettes with price rail adaptors 8329801 and 8329804.

- Art. no.: 8335211 black RAL 9005
- Art. no.: 9136702 green RAL 6024

Material: PVC  
Size: 40 x 1,000 mm  
**Unit quantity: 1 for black. 10 for green**



### Price rail adaptor, variable

Fixing device for PromoSign cassettes, for attachment to price rails 8335211 / 9136702.

- Art. no.: 8329801

Material: POM  
Length: 50 mm  
Colour: White / black  
**Unit quantity: 50**



one-sided

double-sided

### PromoSign fixing hook

Adaptor for clicking into the back of all PromoSign cassettes, with open eyelet.

- Art. no.: 9005067 One-sided, two adaptors needed per cassette
- Art. no.: 9005068 Double-sided, two adaptors needed per two cassettes

Material: Polycarbonate  
Colour: Transparent  
**Unit quantity: 20**