

Arctic 3G Gateway



High Speed Remote Communication using HSPA 3G

Arctic 3G Gateway provides wireless monitoring and control of field devices via 3G. All field assets can be monitored and controlled seamlessly from a central site using the power of 3G.

Arctic 3G Gateway can be connected to multiple field devices by using Serial or Ethernet ports.

Arctic 3G Gateway has quad-band HSPA wireless module featuring data speeds up to 7.2 Mbps on the downlink and up to 5.76 Mbps on the uplink.

Functionality

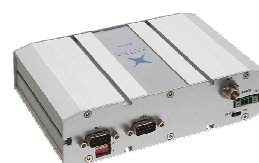
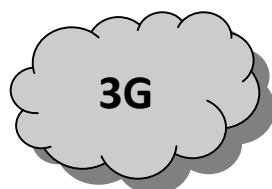
Industrial grade gateway provides the full power of 3G on all quad band frequencies 850/900/1900/2100 MHz

- Ethernet and serial ports for device connectivity at site
- Dual SIM support for using multiple operators in case of failover
- Backup routing, internal switch over and firewall
- Multiple encryption protocols as IPsec and OpenVPN for communication security are supported
- Mobile operator independent VPN connections can be created
- Robust industrial aluminium casing

Benefits

Arctic 3G Gateway can be deployed for various industrial applications for benefits as:

- Real time information from remote sites for monitoring and controlling purposes
- Life cycle extension of legacy devices by adding communication
- Dual SIM cards provide redundant communication in case of network failure
- Optimized communication cost.
- Quad band 3G (including 900 MHz) for maximum network coverage
- Also serial devices can be connected (RS-232/485)



Wireless Monitoring and Control A Complete, End to End Solution

Key Features

- Redundancy in field level using dual SIM card
- Always on two-way communication based on 3G quad band technology
- LEDs for status monitoring
- Support for several encryption protocols for secure communication
- Internal switch and backup routing
- Also serial devices can be connected
- Robust aluminium casing

Application Examples

- Distribution automation
- Unmanned substations
- Video surveillance
- Transformer monitoring
- Water and waste water treatment
- Oil and gas pipelines monitoring
- Corrosion protection
- Street light monitoring
- Weather monitoring stations
- Security applications
- Intelligent building control
- Smart traffic management system

Hardware

Processor Environment

32 bit RISC processor
32 MB FLASH memory
64 MB SDRAM memory

Power

12—36 VDC

Other

Temperature sensor
Real time clock

Environment

Temperature ranges:
–25 to +70 °C
–40 to +85 °C (storage)
Humidity 5 to 85 % RH

Approvals

CE

Network Interfaces

Ethernet

1 x WAN
3 x LAN
10/100 Base-T. Shielded RJ-45
1,5 kV isolation transformer
Ethernet IEEE 802-3, 802-2

Air Interface:

HSUPA, HSDPA, EDGE, GPRS,
GSM

Frequency bands:

WCDMA 850/900/1900/2100
MHz

Antenna

FME antenna connector (50Ω)
(Stub antenna included)

Serial Ports

Serial 1

RS-232/422/485 (selectable)

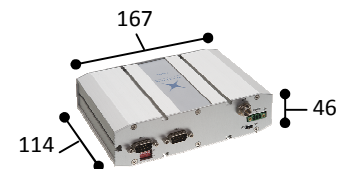
Serial 2

RS232

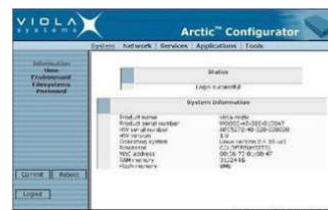
Serial Console

RJ45 connector

Dimensions (mm)



Configuration and Management



The Arctic 3G Gateway is configured using a www browser. A conventional console interface is also provided. The software can be updated over the network.

Ordering Information

Product Code	Product
2622	Arctic 3G Gateway
Accessory Code	Accessory
3020	Power supply (240 VAC / 12 VDC)
3000	DIN rail clip
3221	Arctic Accessory Kit
3410	Magnetic antenna with 2,5 m cable
3420	Rooflex antenna with 2,5 m cable

Ordering Address

Viola Systems Ltd.
Lemminkäisenkatu 14-18B
FI-20520 Turku, Finland

Phone + 358 (0)20 1226 226
Fax + 358 (0)20 1226 220
sales@violasystems.com
www.violasystems.com

© Viola Systems Ltd., August, 2011. All rights reserved.



Viola Systems Ltd., Lemminkäisenkatu 14-18B, FI-20520 Turku, Finland
Phone + 358 (0)20 1226 226 | Fax + 358 (0)20 1226 220 | www.violasystems.com