



Expertise – Passion – Automation



**We ensure clean processes**  
**Hygienic. Durable. Resistant.**

Stainless steel cylinder series CG5-X2977

# Create automation solutions of the future with us

Ensure clean processes.

**As a long-standing partner in the food industry, we focus on the continuous improvement of our products.**

With the CG5-X2977 series, we offer you hygienic durable cylinders for use in the wet areas of food and pharmaceutical industries. A blue special scraper which conforms to the requirements of the FDA and EU 1935/2004 for food safety prevents water from entering the actuator.

## Stainless steel cylinder series CG5-X2977



### Benefits at a glance:

- ▶ Hygienic clean design for reduced cleaning times
- ▶ External seals conform to FDA and EU 1935/2004 regulations
- ▶ Excellent product resistance to typical cleaning agents

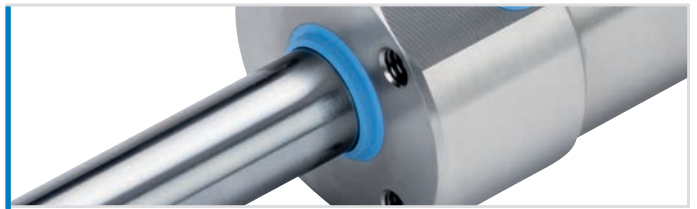
## Product characteristics

### Stainless steel cylinder series CG5-X2977



#### 304 stainless steel grade material

- ▶ Corrosion resistance guarantees high durability
- ▶ The smooth surface finish to 0.8 Ra and can be cleaned easily



#### Scraper seal

- ▶ The design features a rubber lip placed on the outside, making cleaning quick and easy
- ▶ FDA and EU 1935/2004 compliant wiper seal to prevent water ingress into the actuator



#### Food grade gaskets and seals

- ▶ Material fulfils EU 1935/2004 – suitable for use in the food industry in Europe
- ▶ Compliance with FDA regulations fulfils the requirements of US food legislation
- ▶ Easy to detect thanks to their blue colour



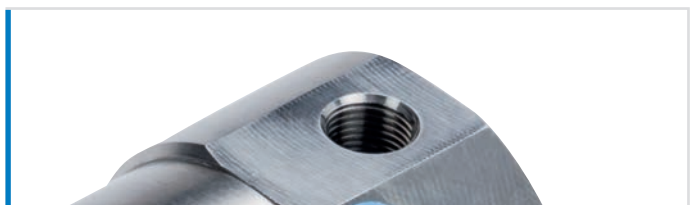
#### Laser marking

- ▶ The smooth surface can be cleaned easily
- ▶ Unlike labels and their adhesives, the food conformity required in the food industry is always met
- ▶ Easy part number identification for servicing



#### Hygienically designed cushioning adjustment

- ▶ Quick and efficient actuator washdown



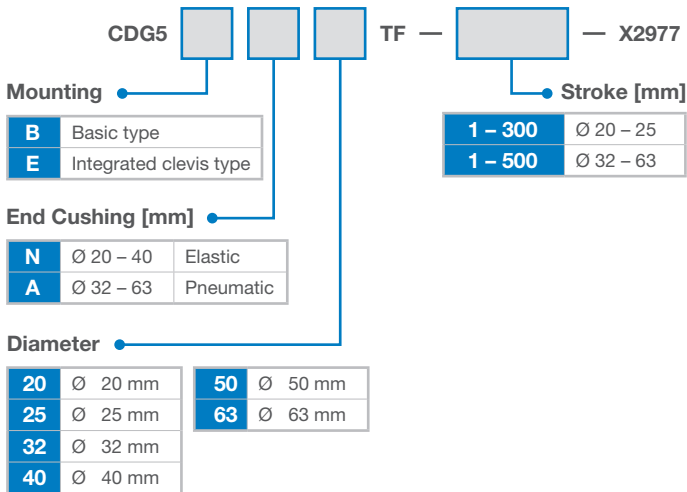
#### Parallel ports

- ▶ The connection is flattened, which makes it possible to attach G-thread fittings in clean design and to clean them quickly and easily
- ▶ Food grade grease NSF-H1
- ▶ Enables flush mounted fittings ensuring hygienic design

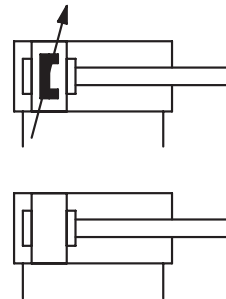
## Product data

### Stainless steel cylinder series CG5-X2977

#### Order number



#### Pneumatic symbol



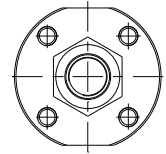
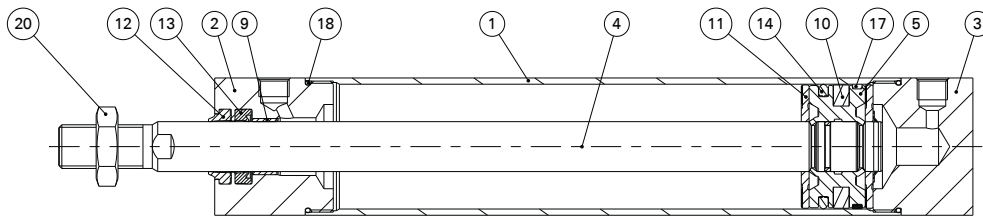
## Technical data

<b>Piston diameter</b>	Ø 20, Ø 25, Ø 32, Ø 40, Ø 50, Ø 63
<b>Stroke Ø 20; Ø 25</b> <b>Stroke Ø 32 – Ø 63</b>	up to 300 mm up to 500 mm
<b>Function</b>	Double acting
<b>Fluid</b>	Compressed air
<b>Max. operating pressure</b>	1.0 MPa
<b>Min. operating pressure</b>	0.05 MPa
<b>Ambient and fluid temperature</b>	-10 °C to +60 °C (no freezing)
<b>Lubrication</b>	Food grade grease
<b>Piston speed</b>	50 – 500 mm/s
<b>Stroke tolerance</b>	+1.0/-0 mm
<b>Cushion Ø 20 - Ø 40</b>	Rubber bumper
<b>Cushion Ø 32 - Ø 63</b>	Air cushion with additional rubber bumper
<b>Magnet</b>	Yes

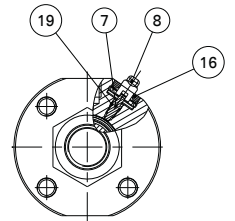
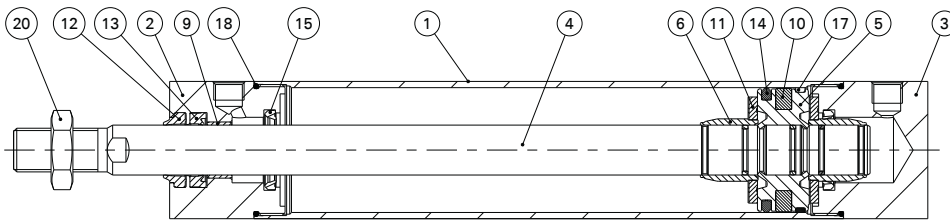
#### Comment:

- ▶ All outside parts made in stainless steel (1.4301)
- ▶ Material of the outside seals (FKM modified) conform to regulation (EC) No. 1935/2004 and conform to FDA
- ▶ Cushion screw with male square handle
- ▶ Laser label
- ▶ NSF-H1 grease

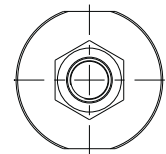
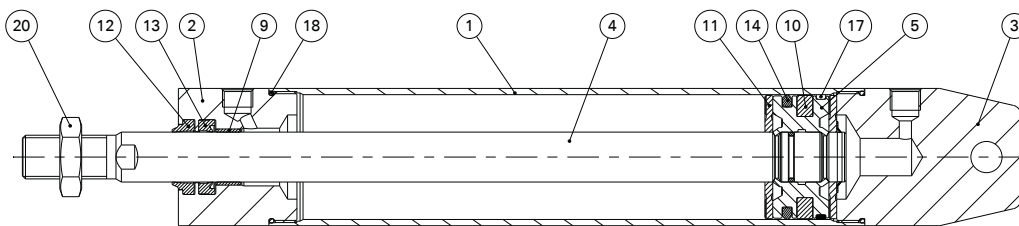
### CDG5BNØTF-Stroke-X2977



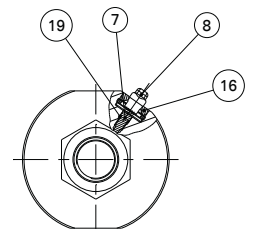
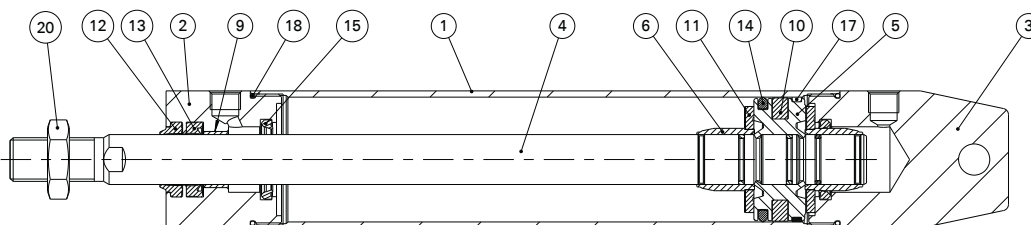
### CDG5BAØTF-Stroke-X2977



### CDG5ENØTF-Stroke-X2977



### CDG5EAØTF-Stroke-X2977



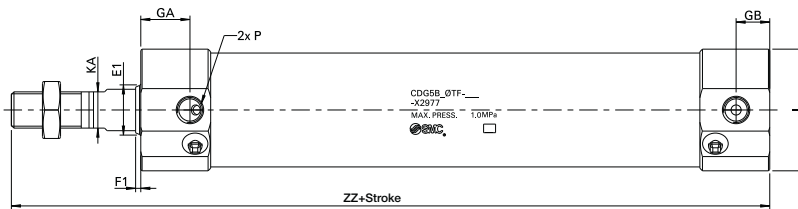
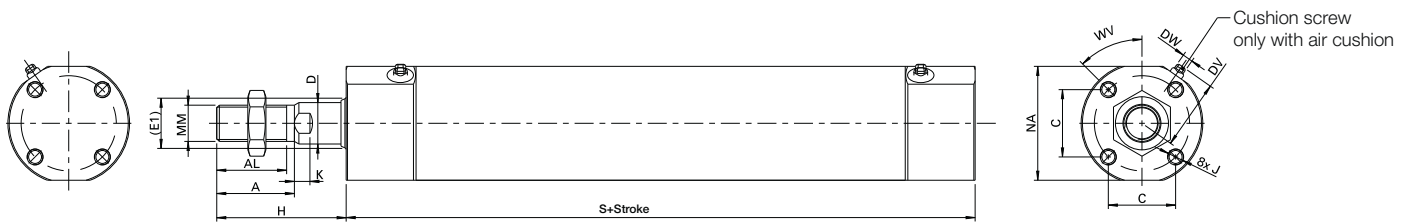
## Parts list

Pos.	Designation	Material
1	Cylinder tube	Stainless steel
2	Rod cover	Stainless steel
3	Head cover	Stainless steel
4	Piston rod	Stainless steel, chrome-plated
5	Piston	Aluminium alloy
6	Cushion ring	Aluminium alloy
7	Cushion screw	Stainless steel
8	Adjustment screw	Stainless steel
9	Bushing	Bearing alloy
10	Magnet ring	—
11	Cushion disc	Urethane
12	Scraper	Modified FKM
13	Rod seal	FKM

Pos.	Designation	Material
14	Piston seal	FKM
15	Cushion seal	Urethane
16	Adjustment screw seal	Modified FKM
17	Wear ring	Resin
18	O-ring	FKM
19	O-ring	FKM
20	Hexagon	Stainless steel

## Dimensions

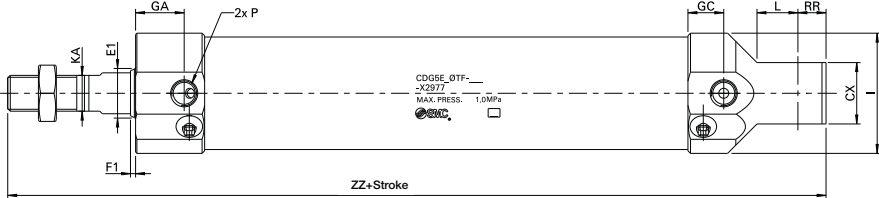
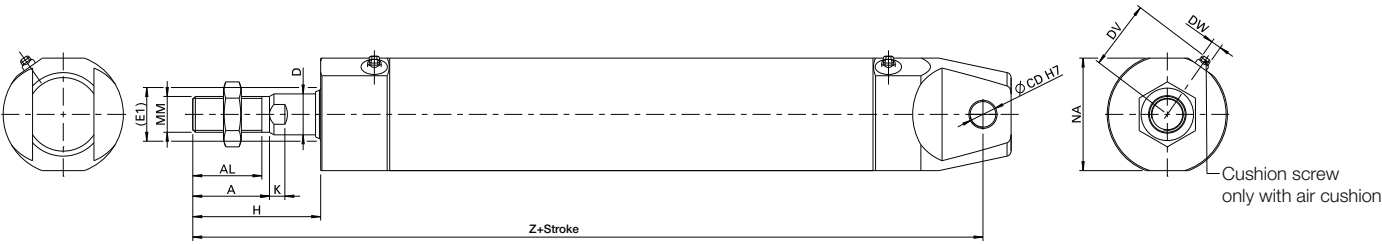
### Basic design CDG5B



Cylinder Ø (mm)	Stroke range	GA	GB	P	A	AL	C	D	E1	F1	H	I	J
20	Up to 300	20	12	M5	18	15.5	16.5	8	~11	2.2	35	31	M4; 7 mm deep
25	Up to 300	20	12	M5	22	19.5	18.5	10	~14	2.3	40	33	M5; 8 mm deep
32	Up to 500	16	10	G1/8	22	19.5	20	12	~15	2.3	40	38	M5; 8 mm deep
40	Up to 500	19	13	G1/8	30	27	26	16	~20	2.3	50	47	M6; 12 mm deep
50	Up to 500	23	14	G1/4	35	32	32	20	~22	2.5	58	58	M8; 16 mm deep
63	Up to 500	21	14	G1/4	35	32	38	20	~22	2.5	58	72	M10; 16 mm deep

K	KA	MM	NA	S	ZZ	WW	WW	DW	DV
5	6	M8 x 1.25	27	83	118	45°			
5.5	8	M10 x 1.25	30	83	123	45°			
5.5	10	M10 x 1.25	34.5	85	125	45°	35°	3	~24
6	14	M14 x 1.5	44	93	143	45°	45°	4	~27
7	18	M18 x 1.5	55	109	167		35°	4	~33
7	18	M18 x 1.5	69	109	167		35°	4	~40

### Integrated clevis style CDG5E



Cylinder Ø (mm)	Stroke range	GA	GC	P	A	AL	CD	CX	D	E1	F1	H	I
20	Up to 300	20		M5	18	15.5	8	16	8	~11	2.2	35	31
25	Up to 300	20		M5	22	19.5	8	16	10	~14	2.3	40	33
32	Up to 500	16		G1/8	22	19.5	10	24	12	~15	2.3	40	38
40	Up to 500	19	14	G1/8	30	27	10	24	16	~20	2.3	50	47
50	Up to 500	23	13	G1/4	35	32	14	40	20	~22	2.5	58	58
63	Up to 500	21	12	G1/4	35	32	14	40	20	~22	2.5	58	72

K	KA	L	RR	MM	NA	Z	ZZ	DW	DV
5	6	14	9	M8 x 1.25	27	132	141		
5.5	8	14	9	M10 x 1.25	30	137	146		
5.5	10	16	11	M10 x 1.25	34.5	141	152	3	~24
6	14	16	11	M14 x 1.5	44	159	170	4	~27
7	18	22	15	M8 x 1.5	55	189	204	4	~33
7	18	22	15	M8 x 1.5	69	189	204	4	~40



Expertise – Passion – Automation

**SMC Deutschland GmbH**

Boschring 13-15 • 63329 Egelsbach, Germany

Phone +49 (0) 6103 402-0

[info@smc.de](mailto:info@smc.de)

[www.smc.de](http://www.smc.de)

MA19VK-671EN

Technical data may be changed without prior notice  
and without obligation on the part of the manufacturer.