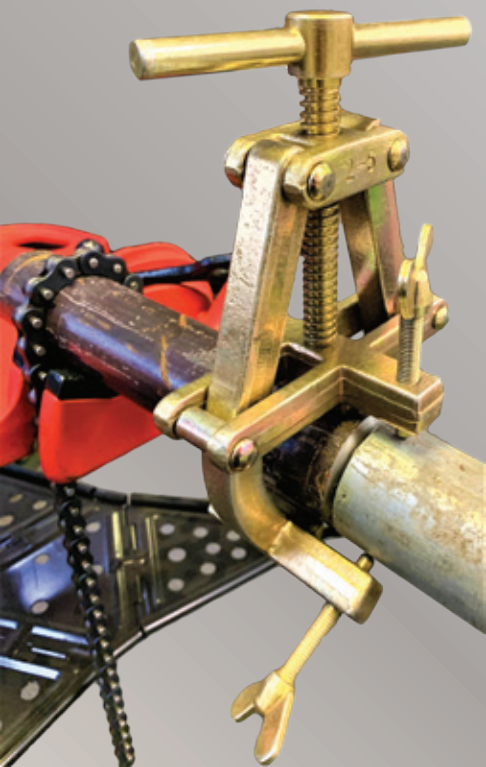


PIPE STANDS AND CLAMPS



Key Plant's association with the welding equipment market traces back over 55 years and throughout this time Key Plant has continued to supply, develop and revise their equipment from the sales of new and refurbished equipment to Key Plant's large rental department and service centre through to more recent fully automated turnkey installations. Our experience means we have developed a knowledge and skill base that is second to none in the industry.

Key Plant's success is a product of these foundations and our versatility in being able to manufacture simple, through to highly sophisticated heavy engineering equipment all in house, under one roof.

To complete our product line we have further developed our range of Pipe Stands and Clamps.

Now, **only 1 stop** where you can get your KP-Pipe Stands and Clamps, your Cutting and Beveling machines up to Complete Automation and Turnkey Projects.

Find out more?

Check out our **new** website:

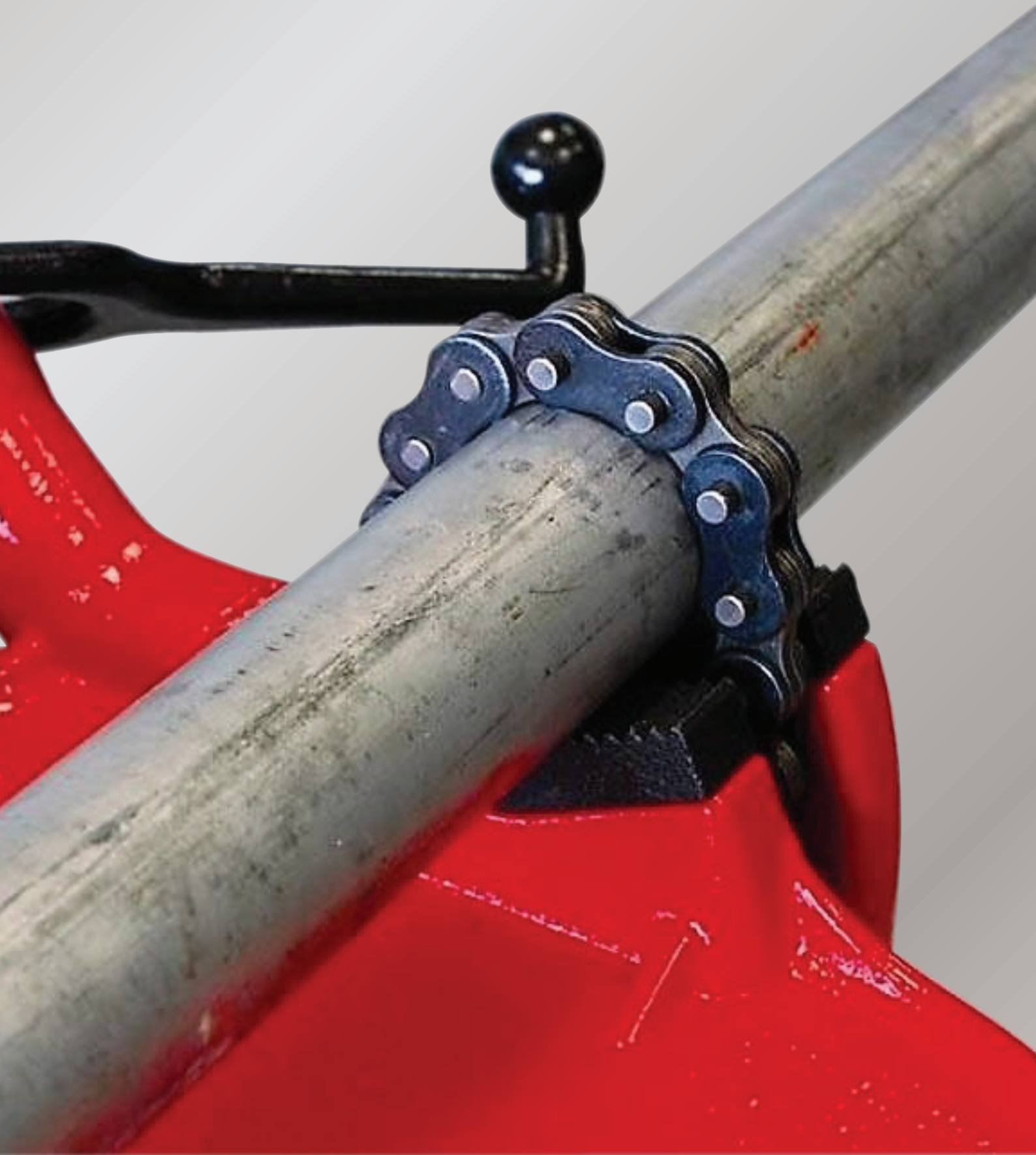
www.keyplant.com

or contact us on:

UK phone : +44 (0) 1538 388 388

Europe phone: +32 (0)15 69 01 52





KEY PLANT PIPE STANDS

STANDARD FEATURES OF ALL KEY PLANT STANDS

38mm – (1 – 1/2") fine adjustment thread

convenient adjustment handle

CE Rated

Quick-action lock washer

Fall Guard

Set screw can lock jack head to stand — no loose pieces

Jack independently load tested for quality assurance

Backed by over 55 years of manufacturing experience

TRI-JACK

Part No. KPJH-100A

Range 100

SPECIAL FEATURES

Formed steel legs

Capacity 1585 kg (3500 lb)

Strut tension plate for superior lateral support

Build for heavy use

Range: 710 – 1250 mm (28" – 49")



TRI-FOLDING-JACK

Part No. KPJH-100B

Range 100

SPECIAL FEATURES

Folds for storage ease

Capacity 1585 kg (3500 lb)

Convenient carrying handle

Range: 710 – 1250 mm (28" – 49")



KEV-JACK

Part No. KPKJH-100C

Range 100

SPECIAL FEATURES

The Kev-Jack is a tall jack specifically designed for tight pipe installation, such as in mechanical rooms or tunnels.

The Kev-Jack is a safe, portable folding stand that is easy to transport and holds a hefty 450 kg (1000 lb) at 1800 mm (72"). In its lowest position of 980 mm (39"), the Kev-Jack is ideal for normal fabrication of pipe welding. Legs fold up for convenient storage in job boxes or truck beds.

Height Range: 980-1800 mm (39" to 72")



In the **Range 100**, **Key Plant** offers a choice of 10 Head Styles and 2 slight-on for every Jack application:

HEAD STYLES

Model	Part Number	Capacity	Pipe Size
Standard V-Head	KPKJH-101	1585kg - (3500lb)	3-600 mm (1/6" - 12")
Steel Wheel Head	KPKJH-105	1135kg - (2500lb)	30-600 mm (1-1/4"-12")
Stainless Wheel Head	KPKJH-106	1135kg - (2500lb)	30-600 mm (1-1/4"-12")
Nylon Wheel Head	KPKJH-107	450kg - (1000lb)	40-600 mm (1-1/2"-12")
Bar Stock Head	KPKJH-112	900kg - (2000lb)	3-250 mm (1/8"-10") Flat
Stainless Bar Stock Head	KPKJH-109	900kg - (2000lb)	S3-250 mm (1/8"-10") Flat
Large V-Head	KPKJH-102	1585kg - (3500lb)	50-609mm (2"-24")



SLIDE-ON TYPE

Model	Part Number	Description
Stainless Style V-Head Attachment	KPKJH-111	Fits over V-Head
Standard V-Head Ball Transfer Set	KPKJH-112	Slide over Standard V-Head Accommodates 10-300mm (3/8" - 12") pipe size
Stainless V-Head Ball Transfer Set	KPKJH-113	Slide over Standard V-Head Accommodates 10-300mm (3/8" - 12") pipe size
Pair Slip on Steel Wheel Head	KPKJH-103	Slide over Standard V-Head Accommodates 10-300mm (3/8" - 12") pipe size
Pair Slip on Nylon Wheel Head	KPKJH-104	Slide over Standard V-Head Accommodates 10-300mm (3/8" - 12") pipe size
Chain Vice Head	KPKJH-114	



KP-XXL-JACK

Part No. KPJH-300

Range 300

The versatile KP-XXL-Jack is the ideal fabricator stand. The large XXL, 300mm (12"), V-Head and heavy-duty four-legged design offers the welder a maximum margin of safety on pipe up to 90cm (36"). With optional accessories, such as the heavy-duty casters and KP Chain Clamp Device, pipe weighing 2265 kg (5000 lb) per KP-XXL-Jack can be wheeled with ease from storage rack to welding bay and onto the shipping dock. This means the load is lifted only once!

The basic KP-XXL-Jack safely handles large diameter pipe up to 90 cm (36"). The 1-3/4" V-Head shaft permits the welder to position loads up to 2265 kg (5000 lb) with ease.



Options:	Part Number	Capacity
XXL V-Head	KPJH-301	2265kg - (5000lb)
Stainless Steel Sleeves	KPJH-307	2265kg - (5000lb)
Stainless Steel Wheel Kit	KPJH-303	900kg - (2000lb)
Steel Wheel Kit	KPJH-302	2265kg - (5000lb)
Nylon Wheel Kit	KPJH-304	450kg - (1000lb)
Standard Ball Transfer	KPJH-305	450kg - (1000lb)
Stainless Ball Transfer	KPJH-306	450kg - (1000lb)
KP Chain Clamp Device	KPJH-308	

Optional Caster Kit



Part Number: KPJH-301

KP DOUBLE ROLL

Part No. KPDR-400A

Range 400

Roller adjustment from either side

Fast adjustment for easy pipe positioning

12-900 mm (1/2" to 36") or 2400 kg (5290 lb)

Simple and effective design avoids welder interference

Bronze bearing to eliminate arcing

Brake to lock loads for layout

Handle large enough to work with gloved hand

KP Double Roll innovative Quick-Change Roller Housings increase the utility of its roller stand product line. Roller housings can be changed in a snap, without tools, to adapt to changing job needs. Roller wheels available in steel, stainless-steel or rubber. Ball transfer heads, with carbon or stainless-steel balls, and bar stock heads.



KP DOUBLE ROLL TABLE

Part No. KPDR-400B

Range 400

Roller adjustment from either side

Fast adjustment for easy pipe positioning

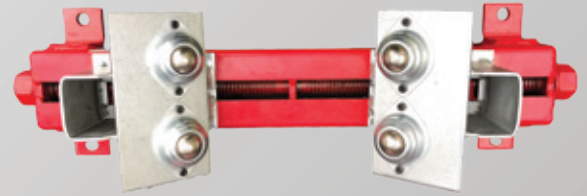
12-900 mm (1/2" to 36") or 2400 kg (5290 lb)

Simple and effective design avoids welder interference

Bronze bearing to eliminate arcing

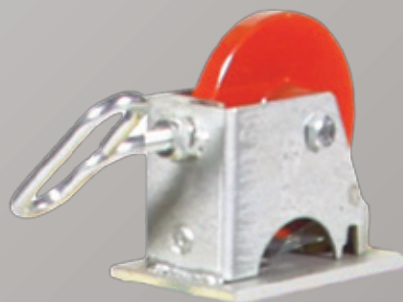
Brake to lock loads for layout

Handle large enough to work with gloved hand



KP Double Roll innovative Quick-Change Roller Housings increase the utility of its roller stand product line. Roller housings can be changed in a snap, without tools, to adapt to changing job needs. Roller wheels available in steel, stainless steel or rubber. Ball transfer heads, with carbon or stainless-steel balls, and bar stock heads.

Model	Part Number	Capacity	Pipe Size
Steel Roller Head	KPDR-401	2400kg - (5290lb)	12-900 mm (1/2" - 36")
Stainless Steel Roller Head	KPDR-402	2400kg - (5290lb)	12-900 mm (1/2" - 36")
Nylon Wheel Roller Head	KPDR-403	550kg - (1200lb)	12-900 mm (1/2" - 36")
Ball Transfer Head	KPDR-404	450kg - (1000lb)	12-900 mm (1/2" - 36")
Stainless Ball Transfer Roller Head	KPDR-405	450kg - (1000lb)	12-900 mm (1/2" - 36")

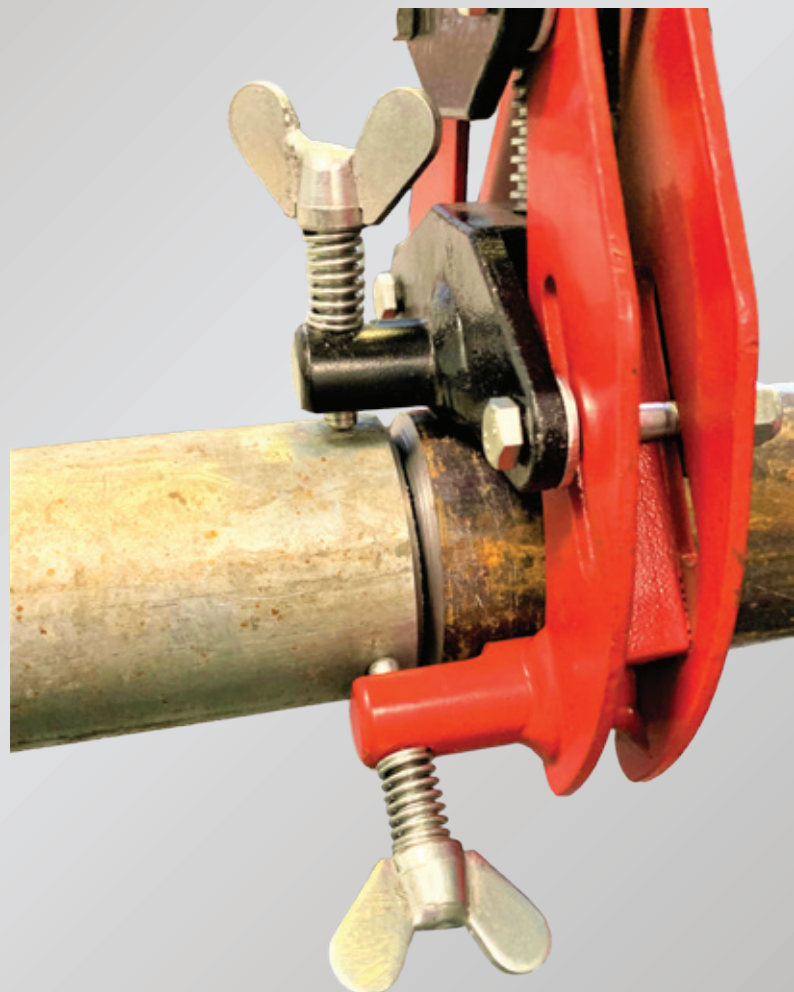


KP-3-POINT-CLAMP

Range 600

KP-3-POINT-Clamp three-point precision clamping assure accurate fit-up, fast setup and alignment of flanges – elbows – reducers and T pieces. The main body of the KP-3-POINT-Clamp Alignment Tool is double-walled steel plate and guaranteed over the life of the product. It's simple, lightweight design has quick action and is ideal for all field and shop fit-up use. You can use the KP-3-POINT-Clamp on stainless steel (SS) without additional options as the feet and screws are standard made out of stainless steel.

Model	Part Number	Pipe Size	Clamp Weight
KP-3-Point-Clamp	KP-Red-601	25-7mm (1-3")	1.5kg (3.5lb)
KP-3-Point-Clamp	KP-Red-602	5-170mm (2-6")	3.5kg (8lb)
KP-3-Point-Clamp	KP-Red-603	170-355mm (6-14")	7.5kg (15lb)

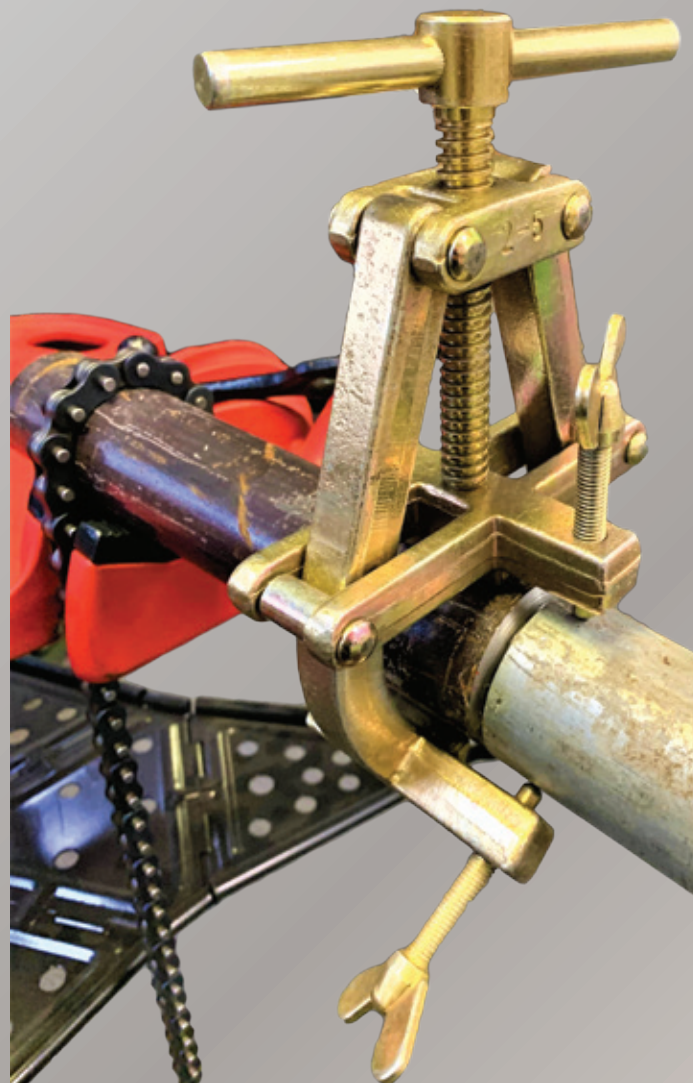
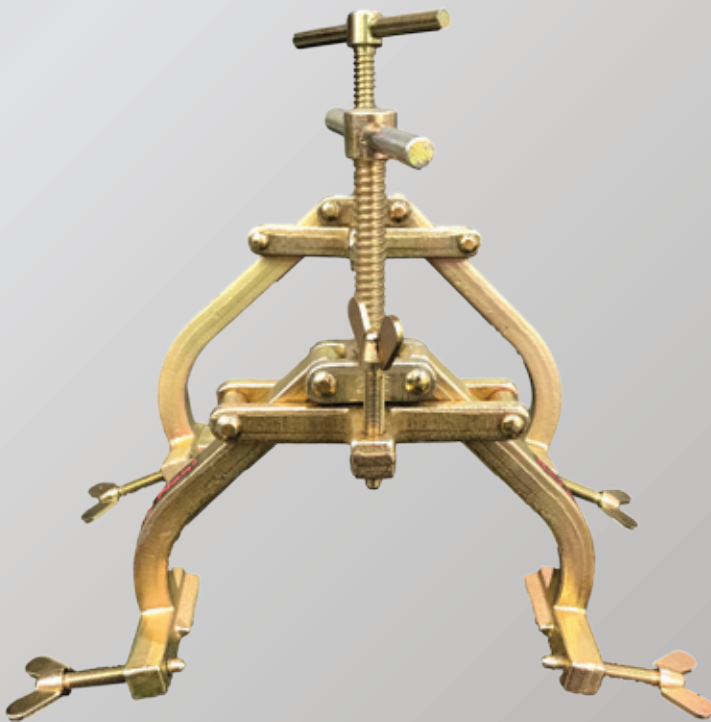


Our KP-GOLD-Clamp series, boasting an increased range of up to 14" o/d and manufactured from forged steel for increased strength. Stainless steel roller balls are fitted as standard to the wing bolts.

KP-GOLD-Clamp can be used on stainless steel by fitting the optional stainless steel feet to prevent contamination.

Model	Part Number	Pipe Size	Clamp Weight
KP-Gold-Clamp	KP-Gold-701	20-29mm (1-3")	1.4kg (3lb)
KP-Gold-Clamp	KP-Gold-702	50-150mm (2-5")	3kg (7lb)
KP-Gold-Clamp	KP-Gold-703	90-195mm (3-7")	3.3kg (7.5lb)
KP-Gold-Clamp	KP-Gold-704	125-245mm (5-10")	7kg (15.5lb)
KP-Gold-Clamp	KP-Gold-705	225-370mm (9-14")	9kg (20lb)

Optional	Part Number
Stainless Steel Covers & Screws	KP-Gold-70(1-5)



KP-SINGLE CHAIN CLAMPS

Range 800

The KP-Single Chain Tool is built for the fitter who takes pride in doing his job right the first time. Constructed to last for years of trouble-free aligning pipes.

The KP-Single Chain Clamp Tool makes pipe fit-up simple and accurate and can be setup by 1 person only.

The chain clamp is similar to a pipe vise with fast, easy setup and solid chain engagement.

The chain clamp is an easy tool for clamping pipe to pipe, pipe to bend, pipe to tee or pipe to the flange. The low weight makes it very easy to operate in the workshop and on site.

The clamps can be used for several pipe dimensions simply by removing the clamp-bars.

There are 2 types available of the single chain clamp, **red for steel** and **green for stainless steel (SS)**, then the chain and clamp bars are made from stainless steel.

KP-SINGLE CHAIN CLAMPS INCLUDE:

Length of chain required for the pipe range

Double Clamp screw & Clamp bars listed for the pipe range

Main block

Fine adjustment

Level and support device

Clamp screw wrench

Parts and operating manual

Metal storage box

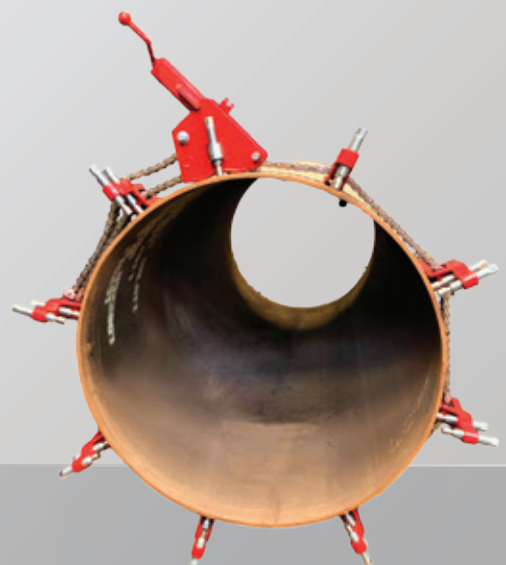
They come fully assembled & ready to use!



Model Steel	Part Number	Pipe Size	Clamp Bars	Clamp Weight	Reforms Pipe to Schedule	Align Pipe to Schedule
KP-Single Chain Clamp	KP-SCC-801	25-320mm (1-12")	3	12kg (27lb)	40	80
KP-Single Chain Clamp	KP-SCC-802	102-500mm (4-20")	7	33kg (72lb)	40	80
KP-Single Chain Clamp	KP-SCC-803	254-914mm (10-36")	8	67kg (144lb)	40	80
KP-Single Chain Clamp	KP-SCC-804	254-1372mm (10-54")	13	82kg (180lb)	40	80
KP-Single Chain Clamp	KP-SCC-805	254-1827mm (10-72")	16	90kg (199lb)	40	80

For Stainless Steel add SS to the Part numbers above

Larger sizes available upon request



KP-DOUBLE CHAIN CLAMPS

Range 900

The Double Chain Tool is built for the fitter who takes pride in doing his job right the first time. Constructed to last for years of trouble-free aligning from pipes.

The KP-Double Chain Clamp Tool makes pipe fit-up simple and accurate.

The KP-Double Chain Clamps are a heavy-duty pipe and vessel clamp designed for alignment and reforming of pipes and vessels up to 240" (6 m) in diameter with schedule 80 wall thickness.

The Double Chain Clamps also align over Schedule 80 pipe when reforming is not required. The heavy-duty Clamp bars and Main Block provide the brute strength necessary to accomplish even the toughest reforming jobs.

Double Chain Clamp is available in steel and stainless steel versions. As an option, a torque wrench is available to apply the correct tension on the clamping feed.

KP-DOUBLE CHAIN CLAMPS INCLUDE:

Length of chain required for the pipe range

Extra heavy-duty clamp bars listed for the pipe range

Number of Main blocks listed for the pipe range

Two fine adjustments

Level and support device

(larger clamps supplied with come-a-long)

Clamp screw wrench

Operating instructions



Model Steel	Part Number	Pipe Size	Clamp Bars	Clamp Weight	Clamping Blocks
KP-Double Chain Clamp	KP-DCC-901	254-915mm (10-36")	9	100kg (220lb)	1
KP-Double Chain Clamp	KP-DCC-902	254-1220mm (10-48")	12	126kg (278lb)	1
KP-Double Chain Clamp	KP-DCC-903	254-1375mm (10-54")	14	136kg (300lb)	1
KP-Double Chain Clamp	KP-DCC-904	254-1525mm (10-60")	16	149kg (328lb)	1
KP-Double Chain Clamp	KP-DCC-905	254-1830mm (10-72")	20	176kg (387lb)	1
KP-Double Chain Clamp	KP-DCC-906	254-2135mm (10-84")	24	200kg (442lb)	1
KP-Double Chain Clamp	KP-DCC-907	254-2440mm (10-96")	28	226kg (498lb)	2
KP-Double Chain Clamp	KP-DCC-908	254-2745mm (10-108")	32	251kg (554lb)	2
KP-Double Chain Clamp	KP-DCC-912	254-4270mm (10-168")	48	367kg (810lb)	3
KP-Double Chain Clamp	KP-DCC-914	254-5490mm (10-216")	60	455kg (1010lb)	3
KP-Double Chain Clamp	KP-DCC-915	254-6100mm (10-240")	66	500kg (1110lb)	3

For Stainless Steel add SS to the Part numbers above

Larger sizes available upon request

Torque Wrench	KP-DCC-916
---------------	------------

Additional Clamp Bars	KP-DCC-917	(add the last 3 numbers of the model you need, see our KP-Double Chain Clamp list above)
-----------------------	------------	--

BIG-JACK ROLLER

Range 1000

The KP-Big-Jack Roller is a great extension on the light duty pipe stands and can carry a much more load than any other product available on the market. Key Plant BIG JACK safely holds big pipe diameters and is full height adjustable just like the lighter pipe stands. KP-BIG JACK is standard designed with 2 lifting eyes to move it easy, optional we can supply with caster wheels or rail track wheels so that you can use it in an automated line.

If you have a heavy wall fabrication project up to 48 inches, the Mega Roller is your answer.

FEATURES & ADVANTAGES BIG-JACK **RANGE 1000A**

Weight capacity 1800Kg (4000lb).

Pipe capacity 50mm (2") - 1220mm (48").

Operational height 600mm (24") - 900mm (36").

152 mm x 76 mm (6"x 3") heavy duty polyurethane over steel wheels with sealed bearings ideal for smooth bump free pipe rotation.

Heavy duty solid acme rod for durable yet precise adjustment under load.

Contamination free wheels are ideal for carbon or exotic pipe fabrication.

Heavy gauge steel construction throughout. These mega rollers are made for years of job-site abuse.

Powder coated safety red for high visibility.

FEATURES & ADVANTAGES BIG-JACK **RANGE 1000B**

Weight capacity 1800Kg (4000lb).

Pipe capacity 50mm (2") - 1220mm (48").

Operational height 965mm (38") - 1600mm (63").

152 mm x 76 mm (6"x 3") heavy duty polyurethane over steel wheels with sealed bearings ideal for smooth bump free pipe rotation.

Heavy duty solid acme rod for durable yet precise adjustment under load.

Contamination free wheels are ideal for carbon or exotic pipe fabrication.

Heavy gauge steel construction throughout. These mega rollers are made for years of job-site abuse.

Powder coated safety red for high visibility.



SUPER-JACK ROLLER

Range 2000

The KP-SUPER-Jack Roller is a great extension on the light duty pipe stands and can carry a much more load than any other product available on the market. Key Plant SUPER JACK safely holds big pipe diameters and is full height adjustable just like the lighter pipe stands. KP-SUPER JACK is standard designed with 2 lifting eyes to move it easy, optional we can supply with caster wheels or rail track wheels so that you can use it in an automated line.

If you have a heavy wall fabrication project up to 36 inches, the Super Roller is your answer.

FEATURES & ADVANTAGES SUPER-JACK RANGE 2000A

Weight capacity 3650Kg (8000lb).

Pipe capacity 50mm (2") - 900mm (36").

Operational height 660mm (26") - 1015mm (40").

152 mm x 76 mm (6"x 3") heavy duty polyurethane over steel wheels with sealed bearings ideal for smooth bump free pipe rotation.

Heavy duty solid acme rod for durable yet precise adjustment under load.

Contamination free wheels are ideal for carbon or exotic pipe fabrication.

Heavy gauge steel construction throughout. These mega rollers made for years of job-site abuse.

Powder coated safety red for high visibility.

FEATURES & ADVANTAGES SUPER-JACK RANGE 2000B

Weight capacity 3650Kg (8000lb).

Pipe capacity 50mm (2") - 900mm (36").

Operational height 660mm (26") - 1015mm (40").

152 mm x 76 mm (6"x 3") heavy duty polyurethane over steel wheels with sealed bearings ideal for smooth bump free pipe rotation.

Heavy duty solid acme rod for durable yet precise adjustment under load.

Contamination free wheels are ideal for carbon or exotic pipe fabrication.

Heavy gauge steel construction throughout. These mega rollers are made for years of job-site abuse.

Powder coated safety red for high visibility.

Electrical driven 1 x 110/240V - 50/60Hz



KEY PLANT VICE STAND

Range 1200

A simple but effective solution to small bore pipe handling .

FEATURES & ADVANTAGES

Optimized Base For More Working Area – Benders are located at the rear of the base and three tool hangers are provided

Integrated Ground Lug – Provides a conductive surface to connect the earth cable

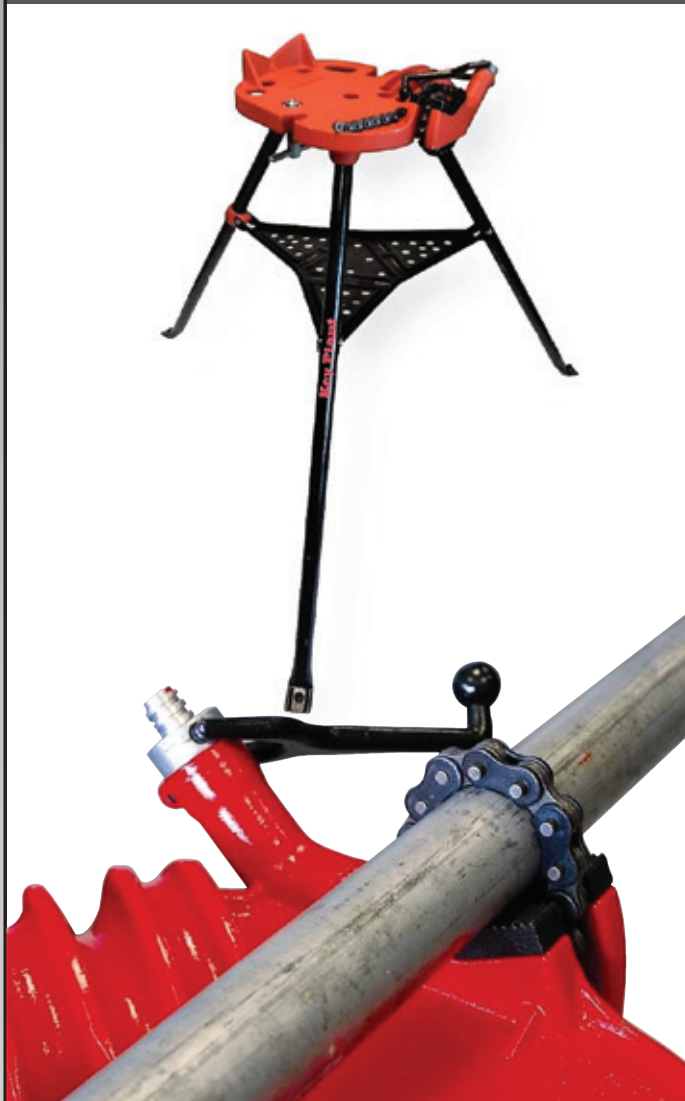
Self Hooking for 4" Pipe – No need to use a second hand to engage the chain into the wear plate

Leg Chain – Retains legs even when subjected to rugged use during operation and transport

Rugged Tool Tray – Prolonged stability before requiring a leg adjustment

Clamping Range – 12,7mm – 152mm (0,5" – 6")

CHAIN VICE STAND



Part Number: 1200-A

CLAMP VICE



Part Number: 1200-B

CHAIN VICE



Part Number: 1200-C

HEAVY DUTY PIPE JACK

Part No. AHI-PR

Heavy Duty Pipe Jack is specially used for automation projects

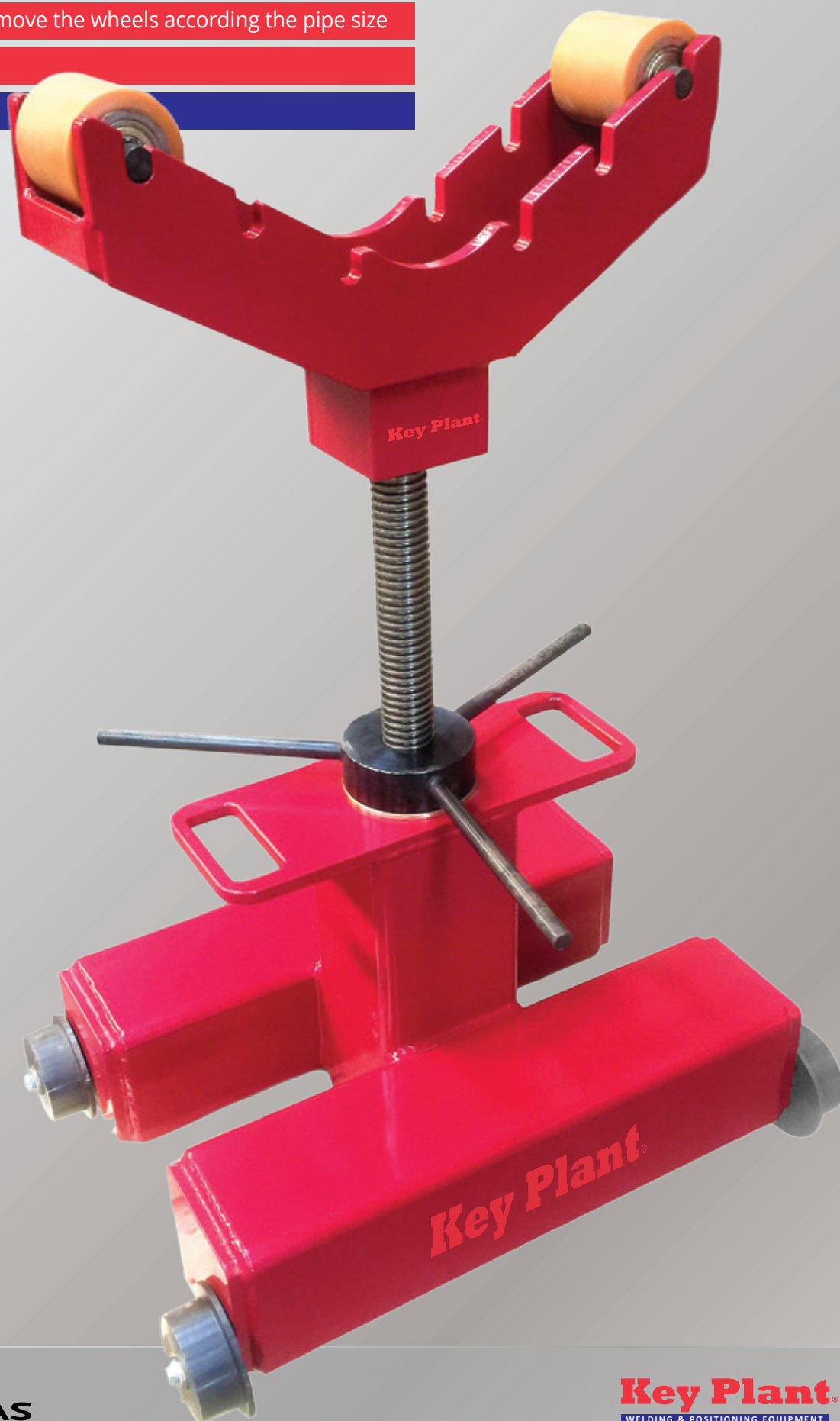
FEATURES & ADVANTAGES

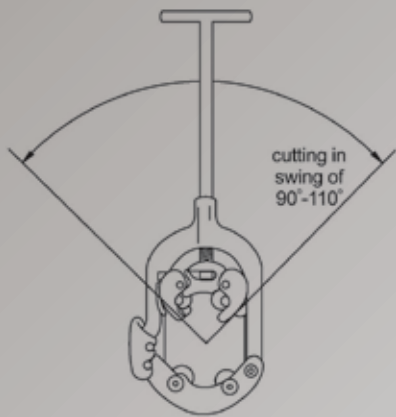
Capacity 2000 kg (4409 lb)

Large V-Head with slots to move the wheels according the pipe size

Heavy duty body

Optional: Track Wheel Kit





PRODUCT DESCRIPTION

Designed for rapid cutting of 2" through 8" steel pipe, heavy-wall steel pipe and cast-iron pipe.

The cutters operate with minimal cutter rotation (90-110 degree) as necessary for tight quarters.

During cutting operation, there is no sparks, serving jobs with such special requirements.

Portable and light weight, easy for transportation.

Part Number	Model Number	Description	Pipe Capacity		Max. Wall Thickness	N.W (Kg)
			in.	mm.		
KP-1301	HPC24	For Steel Pipe	2-4	50-100	6.2mm	6.5
KP-1302	HPC46	For Steel Pipe	4-6	100-152	7.2mm	9
KP-1303	HPC68	For Steel Pipe	6-8	152-203	8.2mm	12

ACCESSORIES		
Part Number	Model Number	Description
KP-1304	HPC24	Cutting Wheel for HPC24
KP-1305	HPC46	Cutting Wheel for HPC46
KP-1306	HPC68	Cutting Wheel for HPC64

HPC1014 Low Clearance Rotary Cutter

The low profile design of HPC1014 cutter needs only 5" (127 mm) clearance for up to 14" (355 mm) pipe diameter.

Safe, clean, straight cuts are easy with these manual-operated cutters.

Cold cut large diameter steel, most stainless steel pipe in close quarters.

HPC1014 cutters are supplied with a slip-on handle that is used to turn and tighten the cutter.

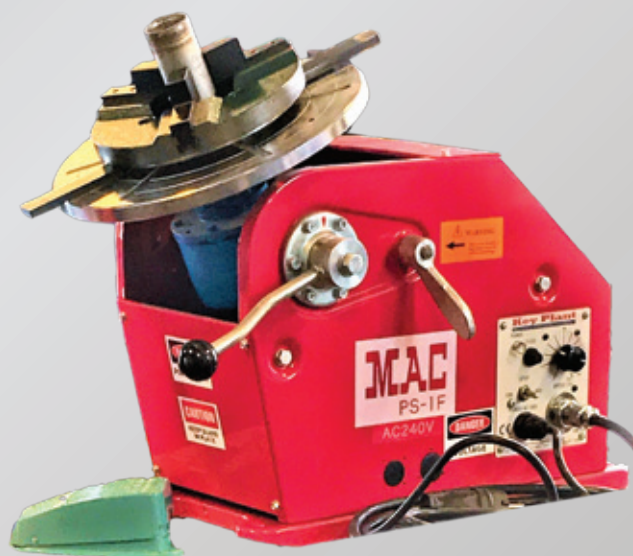
With good leverage from the tool's long handle, pipe snaps off squarely before the cutter wheels penetrate halfway through the pipe.

Provides a square cut and can be used in close quarters anywhere – in the ditch, underwater, in noise-free zones, overhead, in racks of pipes, etc...



Part Number	Model Number	Description	Pipe Capacity		Max. Wall Thickness	N.W (Kg)
			in.	mm.		
KP-HPC1307	HPC1014	For Steel & Stainless Steel	10-14	254-355	11mm	25

ACCESSORIES		
Part Number	Model Number	Description
KP-HPC1308	HPC1014	Cutting Wheel for HPC1014







PR MASKIN AS

WWW.PRMASKIN.NO

Key Plant

WELDING & POSITIONING EQUIPMENT

Head Office & Works

Bode Business Park
Ball Hay Green, Leek
Staffordshire, UK, ST13 6BW

Tel: +44 (0)1538 388 388
Fax: +44 (0)1538 381 509
www.keyplant.com

Rental Warehouse

Regent Road
Liverpool
Merseyside, UK, L3 7DS

email: sales@keyplant.com
email: rental@keyplant.com
email: europe@keyplant.com

