

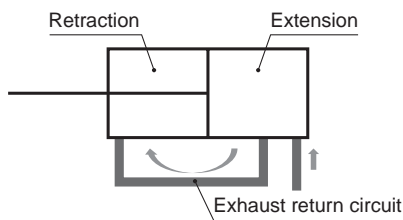
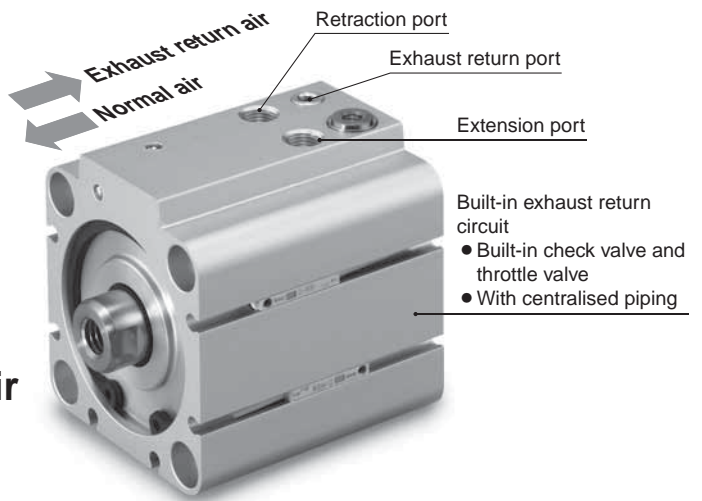
Compact Cylinder/Air Saving Type

RoHS

∅ 32, ∅ 40, ∅ 50

Air consumption
Max. 46 % reduction

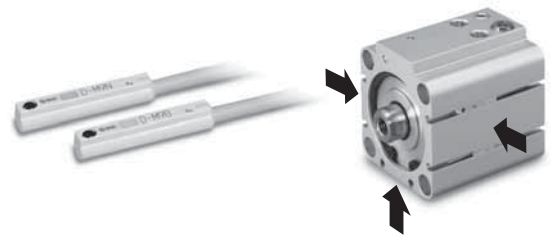
- Uses the air exhausted from the extension side to supply the retraction side, thus reusing the air (Built-in exhaust return circuit)
- Reduce air consumption just by piping to the product



- The dimensions and mounting dimensions are the same as those of the existing CDQ2 series model.

* For the through-hole mounting type only

- With rubber bumper
- Small auto switches can be mounted on 3 surfaces.
Applicable auto switch: D-M9□



Specifications

Bore size [mm]		32	40	50
Action		Double acting, Single rod		
Fluid		Air		
Proof pressure		1.0 MPa		
Max. operating pressure		0.7 MPa		
Min. operating pressure		0.4 MPa		
Ambient and fluid temperatures		With auto switch: -10 to 60 °C (No freezing)		
Lubrication		Not required (Non-lube)		
Piston speed	Extending operation	50 to 500 mm/s		50 to 300 mm/s
	Retracting operation	50 to 300 mm/s		
Stroke length tolerance		0 to +1.0 mm*1		
Cushion		Rubber bumper		
Port size	Retraction port	M5 x 0.8		Rc1/8
	Extension port	M5 x 0.8		Rc1/8
	Exhaust return port	M5 x 0.8		
Mounting orientation		Horizontal lateral, Vertical upward		
Min. theoretical output*2	Retracting operation	32 N	55 N	85 N
	Extending operation	0.29 J	0.52 J	0.91 J
Allowable kinetic energy		0.29 J	0.52 J	0.91 J
Allowable lateral load at rod end (At 30 stroke)		7.6 N	10.9 N	15.8 N
Mounting		Basic type (Through-hole)		

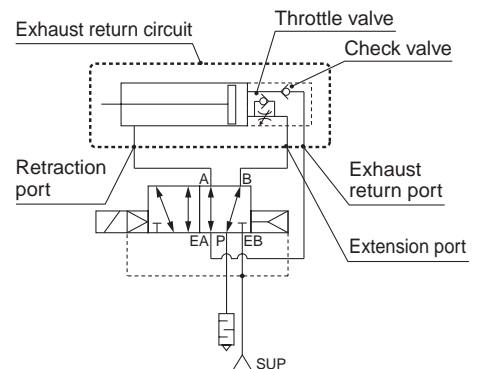
*1 Stroke length tolerance does not include the amount of bumper change.
*2 Be aware that the cylinder output is reduced during the retraction operation.
The cylinder output values in the table above are the min. values. Therefore, depending on the operating conditions, the output may be greater.
Please contact your local sales representative for more details.

CDQ2B-X3150

Standard Strokes

Bore size	Standard stroke [mm]
32, 40	5, 10, 15, 20, 25, 30, 35, 40, 45, 50, 75, 100
50	10, 15, 20, 25, 30, 35, 40, 45, 50, 75, 100

Circuit Diagram

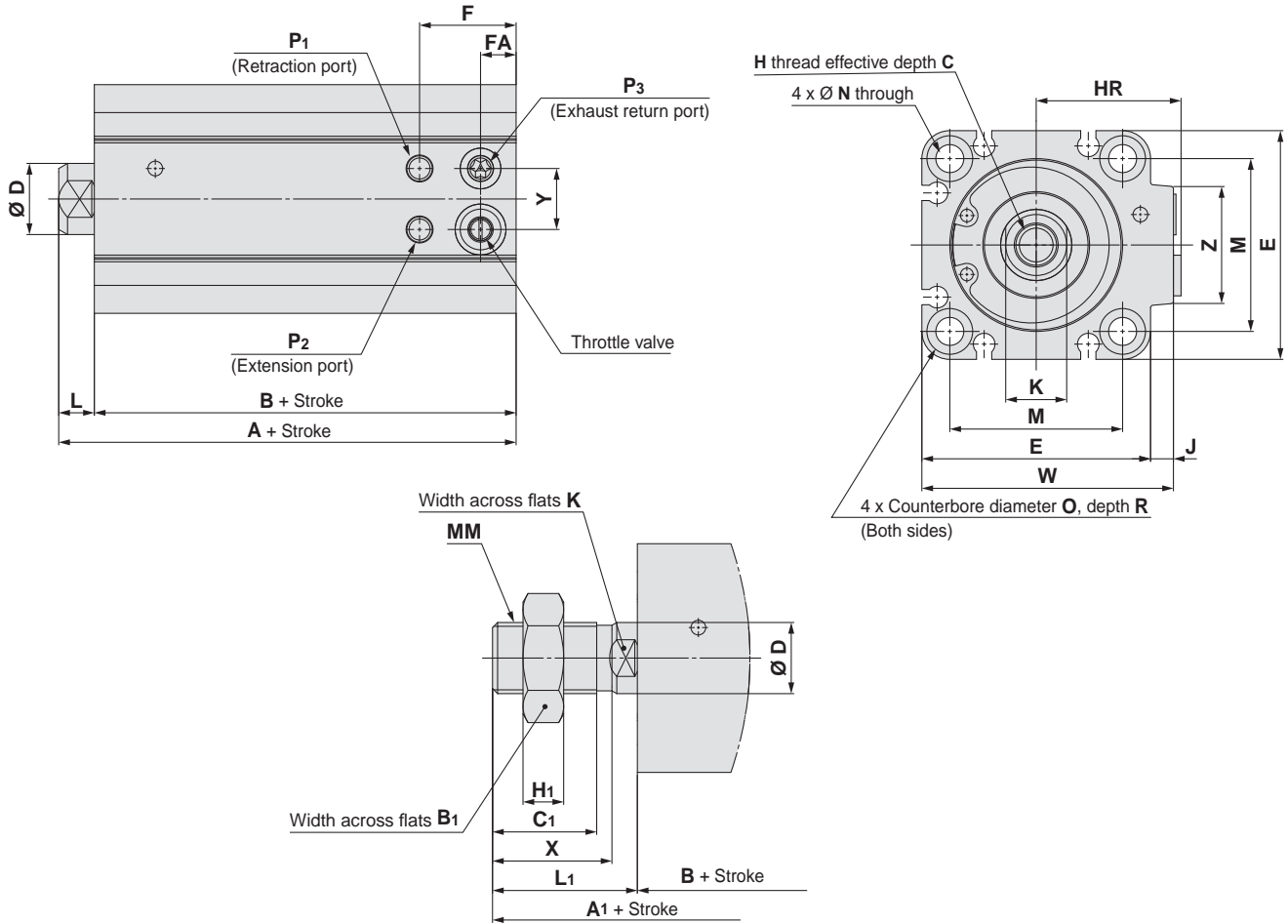


19-EU720-UK

CDQ2B-X3150

Bore size

Dimensions $\varnothing 32, \varnothing 40, \varnothing 50$



Bore size	Standard stroke	A	B	C	D	E	F	FA	H	HR	J	K	L	M	N
32	5, 10, 15, 20, 25, 30, 35, 40,	40	33	13	14	45	19	7	M8 x 1.25	28	4.5	12	7	34	5.5
40	45, 50, 75, 100	46.5	39.5	13	14	52	20.5	9	M8 x 1.25	32	5	12	7	40	5.5
50	10, 15, 20, 25, 30, 35, 40, 45, 50, 75, 100	48.5	40.5	15	18	64	24	9.5	M10 x 1.5	41	7	16	8	50	6.6

Bore size	O	P1	P2	P3	R	W	Y	Z	A1	B1	C1	H1	L1	MM	X
32	9	M5 x 0.8	M5 x 0.8	M5 x 0.8	7	49.5	12	23	61.5	22	20.5	8	28.5	M14 x 1.5	23.5
40	9	M5 x 0.8	M5 x 0.8	M5 x 0.8	7	57	12	23	68	22	20.5	8	28.5	M14 x 1.5	23.5
50	11	Rc1/8	Rc1/8	M5 x 0.8	8	71	18	33	74	27	26	11	33.5	M18 x 1.5	28.5

Handling

Warning

1. Residual pressure will remain in the exhaust return piping of this circuit.

To completely exhaust all of the residual pressure, install a 3-port valve for residual pressure exhaust in the exhaust return piping.

2. The adjustment range for the throttle valve for retraction operation speed adjustment is, starting from the fully closed position, within the number of rotations shown in the table below.

Bore size [mm]	Number of rotations
32, 40	3.5 rotations or less
50	4.5 rotations or less

To adjust the throttle valve, use a 3 mm flat head watchmaker's screwdriver.

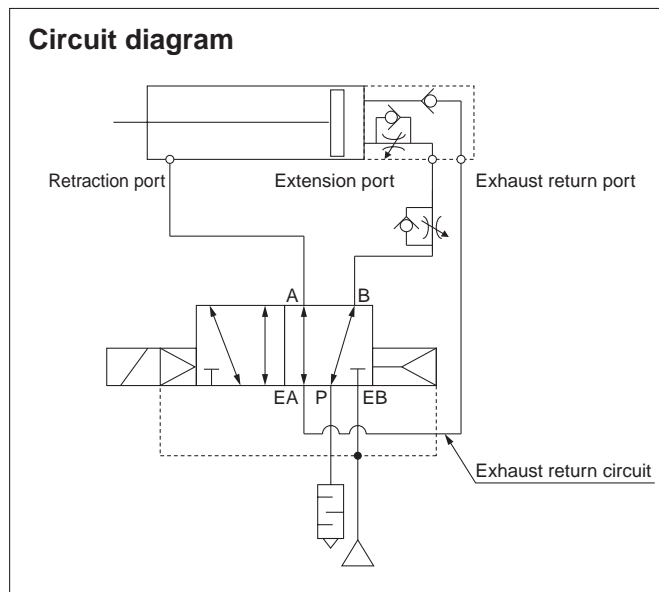
The adjustment range for the throttle valve is, between the fully closed position and the open position, within the range indicated in the table above.

A retaining mechanism prevents the throttle valve from slipping out; however, it may spring out during operation if it is rotated beyond the range shown above.

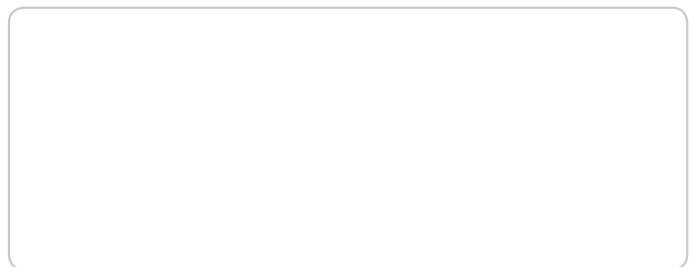
Caution

1. Pipe according to the circuit diagram shown below when using this cylinder.

Circuit diagram



2. For exhaust return, the selection and installation of suitable fittings, tubes, and devices is required. Please contact your local sales representative for more details.
3. For the solenoid valve, select a single unit (body ported or base ported) external pilot type.
4. Follow the instructions below to adjust the speed of this cylinder.
 - Extending operation: Use the speed controller (meter-in) installed between the extension port and the solenoid valve.
 - Retracting operation: Use the built-in throttle valve on the cylinder.
5. As the retracting operation of this cylinder is performed with low pressure and low thrust, refrain from applying more external force than necessary.
6. Pivot brackets cannot be used.



SMC Corporation (Europe)

Austria	+43 (0)2262622800	www.smc.at	office@smc.at
Belgium	+32 (0)33551464	www.smc.be	info@smc.be
Bulgaria	+359 (0)2807670	www.smc.bg	office@smc.bg
Croatia	+385 (0)13707288	www.smc.hr	office@smc.hr
Czech Republic	+420 541424611	www.smc.cz	office@smc.cz
Denmark	+45 70252900	www.smc.dk.com	smc@smc.dk.com
Estonia	+372 6510370	www.smc.pneumatics.ee	info@smc.ee
Finland	+358 207513513	www.smc.fi	smc.fi@smc.fi
France	+33 (0)164761000	www.smc-france.fr	info@smc-france.fr
Germany	+49 (0)61034020	www.smc.de	info@smc.de
Greece	+30 210 2717265	www.smchellas.gr	sales@smchellas.gr
Hungary	+36 23513000	www.smc.hu	office@smc.hu
Ireland	+353 (0)14039000	www.smcautomation.ie	sales@smcautomation.ie
Italy	+39 03990691	www.smcitalia.it	mailbox@smcitalia.it
Latvia	+371 67817700	www.smc.lv	info@smc.lv

Lithuania	+370 5 2308118	www.smclt.lt	info@smclt.lt
Netherlands	+31 (0)205318888	www.smc.nl	info@smc.nl
Norway	+47 67129020	www.smc-norge.no	post@smc-norge.no
Poland	+48 222119600	www.smc.pl	office@smc.pl
Portugal	+351 214724500	www.smc.eu	apoioclientept@smc.smces.es
Romania	+40 213205111	www.smcromania.ro	smcromania@smcromania.ro
Russia	+7 8123036600	www.smc.eu	sales@smcru.com
Slovakia	+421 (0)413213212	www.smc.sk	office@smc.sk
Slovenia	+386 (0)73885412	www.smc.si	office@smc.si
Spain	+34 945184100	www.smc.eu	post@smc.smces.es
Sweden	+46 (0)86031200	www.smc.nu	smc@smc.nu
Switzerland	+41 (0)523963131	www.smc.ch	info@smc.ch
Turkey	+90 212 489 0 440	www.smc.pnomatik.com.tr	info@smc.pnomatik.com.tr
UK	+44 (0)845 121 5122	www.smc.uk	sales@smc.uk

SMC Corporation Akihabara UDX 15F, 4-14-1, Sotokanda, Chiyoda-ku, Tokyo 101-0021, JAPAN Phone: 03-5207-8249, Fax: 03-5298-5362