

# Industrial washroom solutions

Long-lasting, functional  
sanitary fittings



**FRANKE**





**Scope of application  
for industrial production**  
from page 8

”

WE OFFER IDEAL  
WASHROOM SOLUTIONS FOR  
YOUR EMPLOYEES' HEALTH.



**Scope of application for  
the chemical industry**  
from page 24



# Contents

The world of work in the 21st century is changing at a rapid pace. Modern technology, automation and digital processes pose huge challenges, not only for businesses but for employees too. Clean, hygienic washrooms and workspaces show your employees how much you value their dedication and effort.

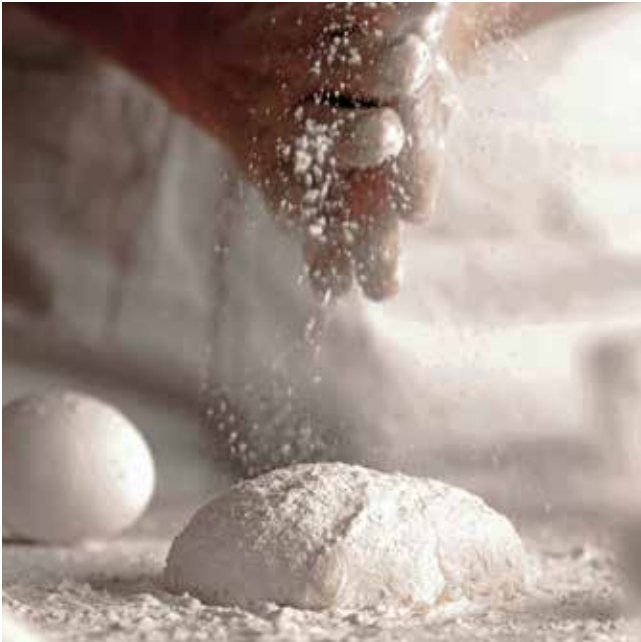
Robust fittings that reduce the work required for maintenance and servicing, combined with energy-saving, convenient fittings form the ideal basis for establishing this value.



**Scope of application  
for the food processing  
industry** from page 16

Franke Water Systems	4
Our mission	6
Industrial production	8
Food processing industry	16
Chemical industry	24
Disinfectant dispensers	32
Emergency showers	34







# Franke Water Systems

**We create a wonderful  
washroom experience.**

Franke Water Systems specialises in intelligent equipment for sanitary facilities in public, commercial and industrial facilities. We turn what has previously been impossible into reality for our customers and implement it innovatively in practice. Working together, we develop aesthetically attractive and complete washroom solutions.

## **Our expertise**

As one of the world's leading sanitary-ware specialists, we offer all of our partners innovative and intelligent product solutions from one source. We are particularly proud of the fact that we still produce 90 percent of our products in our own factories. With continuous investment in research and development, we constantly expand and improve our product offering.

## **Worldwide presence**

Franke Water Systems sells its products through its own sales organisation in collaboration with other Franke partners worldwide.

## **Innovations**

Our innovation centres in Germany, the UK, Poland and the United Arab Emirates are responsible for product and technology development.

## **Quality**

Our engineers develop innovative taps and system technology for sophisticated building use.

## **State-of-the-art manufacturing**

Franke Water Systems has its own production facilities in Germany, the UK, Finland, Canada, Poland, South Africa, China and the United Arab Emirates.



# Our mission

## True to our philosophy.

Each of our product developments is based on the underlying principle of continuous further development of future-proof fittings by Franke Water Systems. Our comprehensive product philosophy essentially follows three basic requirements:

# 1

### **Stainless steel material**

The use of 304 chrome-nickel steel as a starting material for equipment in industrial and commercial sanitary and employment facilities is now standard – for good reason. The material is robust, easy-care and therefore particularly cost-effective. Robust and easy-to-clean sanitary fittings keep maintenance and servicing costs to a minimum. An additional bonus for the environment: New stainless steel products are made of at least 65 % recycled stainless steel.

# 2

### **MIRANIT material**

Sanitary equipment products made of a shatter-proof, resin-bonded mineral material are ideally suited to the modern, aesthetically pleasing design of sanitary facilities.

MIRANIT products are cast in one piece, with no adhesive seams and joints, and stand out with exceptional properties including high stability and elegant grace. The smooth, pore-free, hygienic gel coat surface also provides exceptional durability and resistance.

# 3

### **Modern technology**

Franke multiple washbasins and wash-troughs are welded seamlessly in an innovative robotic laser welding process and meet the strictest hygiene requirements, even under demanding conditions.

The tried-and-tested InoxPlus surface finish has enabled us to optimise the stainless steel material, which was already easy-care, even further. The result takes the form of surfaces that are easy to clean and that resist fingerprint marks, thanks to their in-depth surface enhancement.





”

OUR MATERIAL SURFACES  
MEET THE HIGHEST  
QUALITY REQUIREMENTS.



**Stainless steel, high-polished**  
Surface that meets high quality standards



**Stainless steel with a satin finish**  
Unpolished, robust material finish



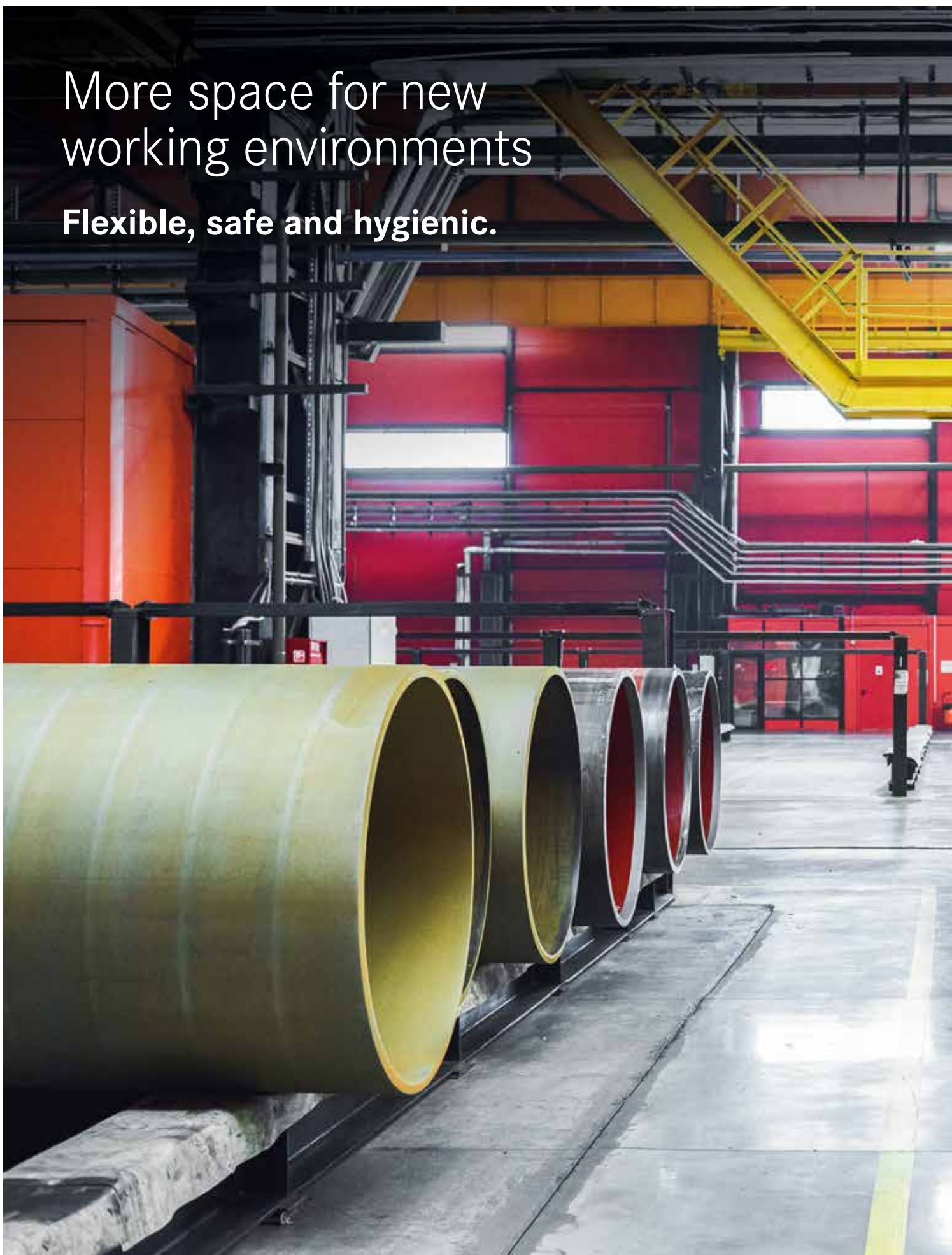
**InoxPlus surface refinement**

During the refinement process with proven INOX-Plus technology, nano-particles interlock with the molecules of the metal surface and nestle closely up against small microscopic imperfections. The resulting extremely fine structure makes finger-prints almost invisible.

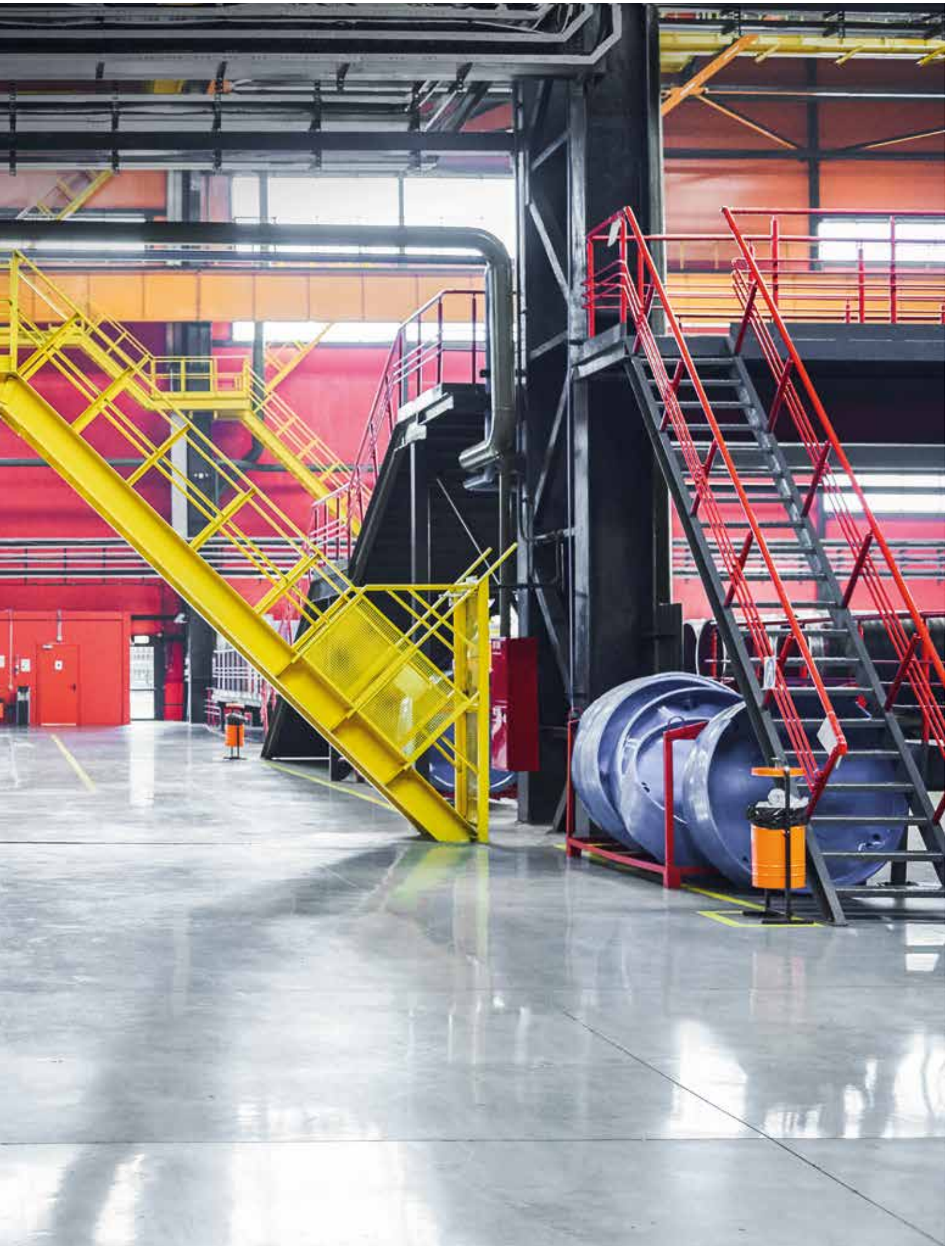


More space for new  
working environments

**Flexible, safe and hygienic.**









Ergonomically designed washbasin rows made of robust mineral granite with a hygienic, pore-free surface are fitted with fitting units with single lever mixers.

Products in the room:

FUTURA exclusive row washbasin systems made of MIRANIT, fitting units with F5L-Mix single lever mixers, also double-rowed F5S-Therm shower fittings, AQUAJET-Slimline shower heads



## From a simple space to a contemporary washroom.

For clean hand washbasins without internal corners or edges.

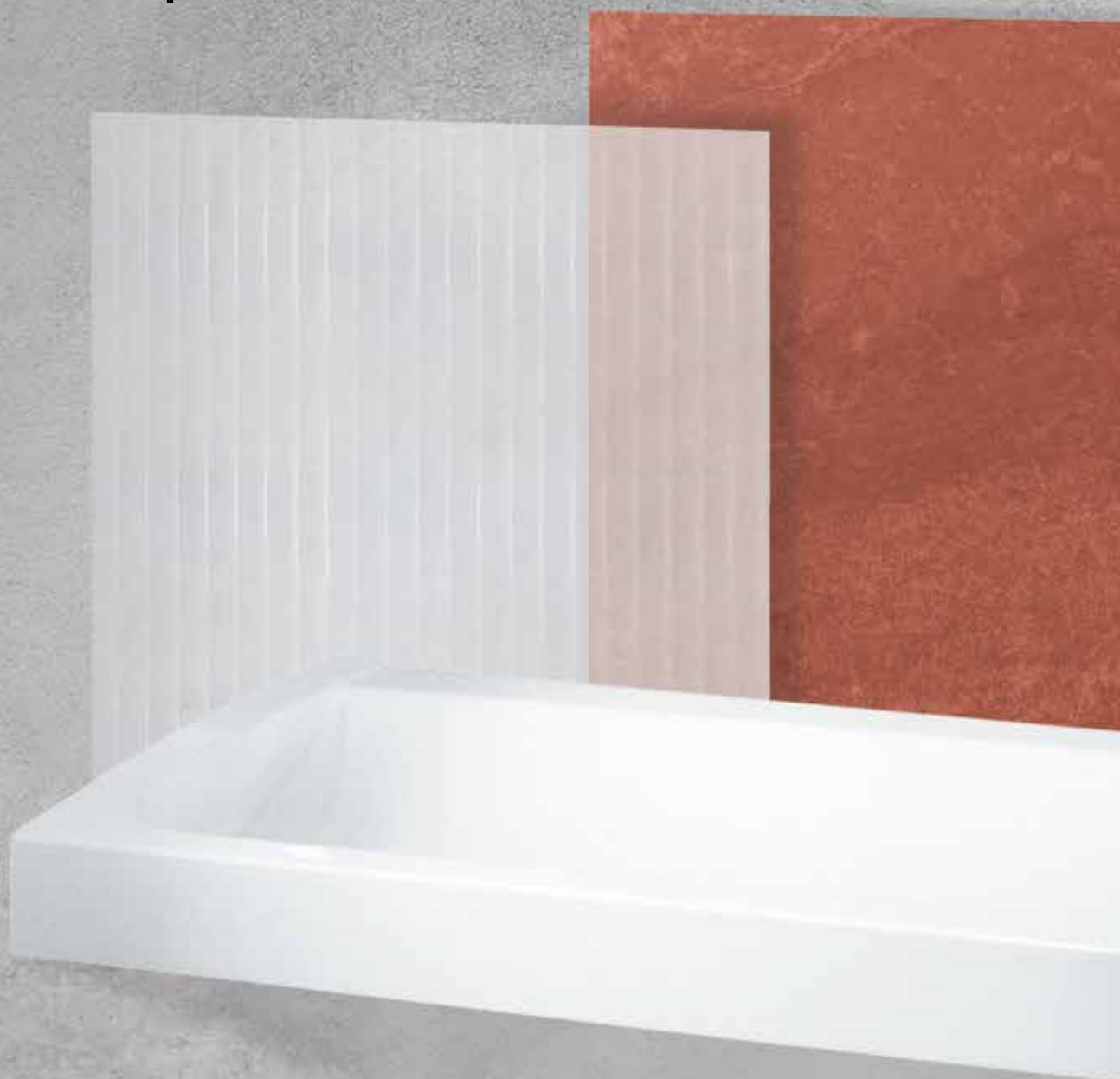


Physical stress is part of many people's everyday work in industry and trade, convenient hand and body washing facilities provide welcome refreshment before heading home. Flexible, safe and user-friendly sanitary solutions are what is needed here.

Functionality, water-conserving and energy-conserving products, low maintenance and servicing expenditures, as well as cleanliness and good cleaning characteristics are key decision criteria.

# MIRANIT – the material

**Sanitary equipment  
cast in one piece.**







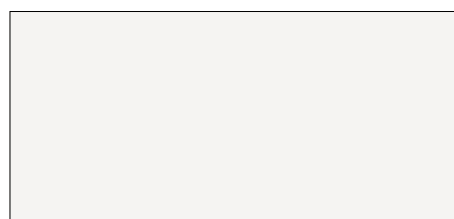
FUTURA exclusive row washbasin systems made of MIRANIT also featuring a clear design with flat surfaces and small radii.



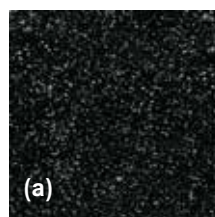
MIRANIT is a stable compound consisting of approximately 80 % natural minerals – such as marble powder, sandstone and quartz sand – and approximately 20 % high-quality unsaturated polyester resin.

### MIRANIT

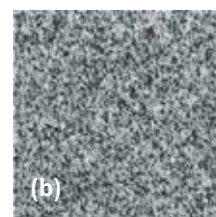
Due to its outstanding fluidity, this resin-bonded mineral material can be molded in any shape and stands out thanks to its high stability, extreme resistance and attractive design. The smooth, pore-free, hygienic gel coat surface repels dirt, comes in the Alpine white color as standard, and is temperature-resistant up to 80 °C. In most cases, all that is required to clean it is a damp cloth; any potential surface damage can be repaired using special repair kits.



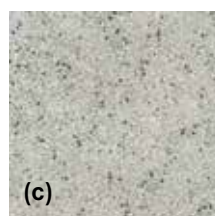
Alpine white



(a)



(b)



(c)

For an additional cost, Franke offers mineral granite products in additional colours, Granite Black (a), Granite Black/White (b) and Granite Light Gray (c). These versions are temperature-resistant up to 65 °C.



As an alternative material, Franke offers seamless welded washtroughs from the PLANOX range. Made of stainless steel, they comply with the strictest hygiene requirements.





## Needs-based comfort and cost efficiency.

Functional, easy to clean equipment.



AQUAJET-Slimline  
shower head



MÜNCHEN  
shower head

### Shower heads for wall connection

Its slim housing and elegant appearance makes the AQUAJET-Slimline perfect for use in shower facilities that are both modern and sophisticated. Its well-distributed, low-aerosol, and low-noise shower jet provides a pleasant comfort level when showering. A clear benefit for frequently used shower systems is the special design of the anti-calcification plastic jet face which prevents annoying dripping. The showerhead base can be cleaned easily by simply wiping it.

The classic MÜNCHEN shower head with an all-metal housing and automatic control of water quantity is available as an alternative with a powerful shower jet base.



### F5S-Therm integrated battery

All F5S self-closing valves are equipped with the innovative, pressure-independent and stagnation-free ceramic cartridge from Franke. The **FRanke Modular Innovation Cartridge** – or **FRAMIC** for short – is the world's first patented self-closing cartridge with a ceramic valve. The water flow is activated by the pressure on the handle cap. The water flow stops after the flow duration which is set by the installer, without any further contact with the fitting. The optimum shower temperature can be adjusted using the thermostat handle and the integrated thermostat provides active protection from scalding. The integrated hygiene unit permits automatic water hygiene flushing and thermal disinfection of the fittings and guaranteed drinking water hygiene in compliance with regulations.



### Fitting units with F5L-Mix

The compact fitting units made of satin-finished stainless steel are provided for washbasin widths of 600, 700 and 800 mm. They can be installed on walls with three to six washbasins or freely in a room back to back with four to twelve hand washbasins. The range has been extended with the addition of versions for water hygiene flushing via the last tap. The water connection is established from the rear or underneath using guide pipe holders. As well as the F5L-Mix fitting design shown here, self-closing single button mixers are also available to complete the units.

Perfect for demanding situations

**Products with experience  
and passion.**









## Manual quality in the workplace.

Solutions for efficient operating procedures.



For washing your hands between activities, rinsing or filling bowls, pots and other utensils – when working with food processing on a daily basis, continuous hygiene for employees and their equipment is an obvious requirement.

Functionality, material selection and easy cleaning are essential for equipment in the food processing industry in order to guarantee the continuous high quality of the food being produced.







Hygienic single washbasins are complimented by stainless steel accessories with InoxPlus surface finishing on the front and a high-quality wall-mounted taps with a thermostat. The frequently used commercial sink has been combined with a wall-mounted mixer with pre-fitted disinfection unit for optimum water hygiene.

Products in the room:

ANIMA stainless steel washbasin, STRATOS accessories, F5E-Therm electronic integrated wall-mounted mixer, MAXIMA commercial sink, F5E-Therm electronic wall-mounted mixer

# Materials expertise honed to perfection

## High-quality stainless steel for professional use.

### **Stainless steel**

Washbasins, commercial sinks, cleaning and utility sinks, as well as other fittings made of robust, easy-care 304 chrome-nickel steel are commonly used in the professional food processing industry and in the commercial sector. Products made of this starting material are particularly impressive thanks to their cleaning advantages.

### **Stainless steel – an overview of the benefits**

<b>Stainless:</b>	Rust only appears as a result of external influences
<b>Acid-resistant:</b>	Largely resistant to all commonly available acids used in the household
<b>Hygienic:</b>	Outstanding disinfection capabilities against bacteria and viruses
<b>Easy-care:</b>	Easy to clean, even when extremely dirty
<b>Impact- and crack-resistant:</b>	Resistant to mechanical stress
<b>Heat- and fire-resistant:</b>	Hot items do not cause burn marks
<b>100% recyclable:</b>	New stainless steel is made from at least 65 % recycled steel







The high-quality commercial sink range is noteworthy for its wide selection, generous-sized working sinks and variable storage surfaces.



The tried-and-tested SIRIUS washtroughs are also seamlessly welded. With or without the tap ledge, as a single or double washtrough, for wall or inset mounting, this wide range of fittings leaves nothing to be desired.



## Outstanding fittings.

Versatile solutions for the workspace.



F5S-Therm  
integrated battery



F5E-Therm  
wall-mounted  
mixer

### F5E-Therm electronic thermostat with in-wall or wall-mounted mixer

The product line is exceptional, both visually and haptically, and impresses with geometrical elegance and distinct design elements. Intelligent, hygienic and – last but not least – environmentally friendly, the fittings set new standards when it comes to attractive sanitary facilities in a professional context.

The innovative electronic fittings in the F5-line stand out thanks to rapid infrared detection, programmable functions and control options including integration in the AQUA 3000 open water management system.



### RODAN electronic soap dispenser

The robust, hygienic stainless steel accessories with a material thickness of 0.8 mm come in outstandingly functional designs. RODAN accessories are the perfect choice for modern accessories in frequently used sanitary facilities and offer customers value and attractive design. Touch-free soap or disinfection dispensers (for more information, see p. 32) in this accessory range make an effective contribution to implementing hygiene concepts.



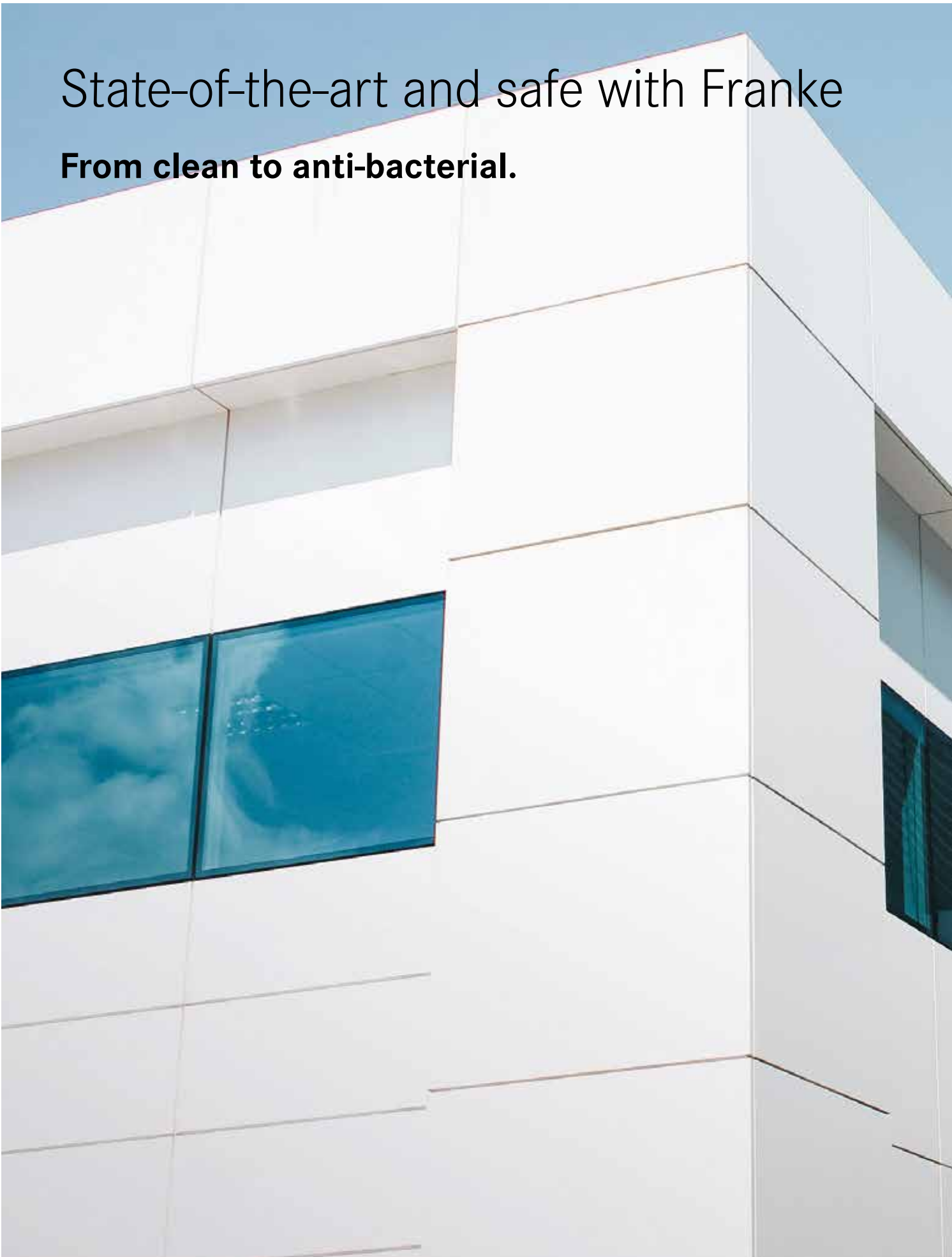
### STRATOS paper towel/waste bin combination

With a comprehensive selection of STRATOS accessories, sanitary facilities stay cleaner for longer, due to the proven Inox-Plus technology finish to the front surface of these products. The close bond between nano-particles and the satin finished material surface compensates for any miniscule unevenness, guaranteeing that the surface is easy-care and that finger-prints on the surface are almost invisible.

The STRATOS accessories range includes products for both wall mounting and recessed mounting.

# State-of-the-art and safe with Franke

## **From clean to anti-bacterial.**









Franke offers ideal washroom and equipment solutions for your employees' health.

Products in the room:

F5L-Mix single lever wall-mounted mixer, RODAN stainless steel accessories, SIRIUS utility sinks and washtrough, SIRIUS shoe- and boot- cleaning unit. In the background: PLANOX washtrough with F3S-Mix self-closing wall-mounted mixers



## Franke in its element.

Resistant, safe and versatile.



It is impossible to picture the modern world of work without clean, hygienic, comfortable washrooms. Attractive and robust sanitary systems for a range of applications are as much a part of any business as state-of-the-art industrial produc-

tion technology. In this respect, parameters such as easy maintenance and care, energy efficiency, and comfort and convenience play a decisive role when selecting products.



Stainless steel sanitaryware offers better durability, easier cleaning and improved robustness.



**AQUA 3000 open-compatible**  
Suitable for integration in the AQUA 3000 open water management system with accessories



**AQUA 3000 open**  
Fitting suitable for integration in the AQUA 3000 open water management system





## Developed for demanding use.

Combining materials and innovation.



### F5E urinal flush valve

Opto-electronically controlled flush valves offer a number of advantages due to their concealed mounting. The circular sensor design with integrated electronics do not protrude into the room and they have a small surface area to avoid damage. Water hygiene flushing, which initiates 24 hours after the last activation, ensures no water is left to stagnate in the pipework. The flush valve also offers the option for networked installation in to the water management system. Parameters can be adjusted, and statistical data can be exported using the optional bidirectional remote control.



### CAMPUS WC washbasin

A bright and friendly design, combined with durable and easy-clean surfaces supports the clean appearance of toilet facilities. For sanitary fittings, wall-mounted WC pans made of robust stainless steel with certified flushing according to EN 997.



### SIRIUS shoe- and boot-cleaning unit

After walking through industrial plants, workshops or laboratories, it is ideal if staff can clean their work shoes or boots quickly and easily. Stainless steel is ideal for this purpose thanks to its robustness and durability – this material is capable of withstanding extreme stress. Dirt and grease can be washed off easily from the smooth, pore-free surface. Scratches and nicks soon lose their hard-edged contours and blend into the surface.



### EXOS. - A3000 open WC cistern control

The technical equipment used in large industrial plants can be automated and centrally controlled as a smart building. The focus is on energy optimisation of building operations to reduce operating costs and increase building safety. Franke Water Systems provides optionally devised sanitary solutions for sustainable operation of these buildings. The AQUA 3000 open water management system features integrated fittings that establish a balance between ecology and economy, between hygiene and consumption and between planning and operation.

## A variety of options in stainless steel.

Perfectly suited to any situation.

Washbasins and washtroughs made of 304 chrome-nickel steel have proven to be especially suitable if they will be subjected to frequent use and tough demands. Cleanliness and maximum hygiene are standard requirements in all wet and production facilities. The washbasins and troughs are easy to install and made of tried-and-tested, high-quality, robust stainless steel. The material is reliably corrosion-resistant and allows for easy, hygienic cleaning.



### **RONDO round sinks**

From circular to oval, from high-polished to satin finished, RONDO inset sinks are available in a range of designs and sizes. When integrated in to the deck material, individual washroom solutions can blend seamlessly into the architect's concept.



### **ANIMA single washbasin**

The sturdy single washbasins in this series offer a wide range of designs and provide the optimum solution for professional requirements. If needed, most ANIMA washbasins can be provided with additional holes for taps and/or soap dispensers.







The right cleaning and care products make stainless steel more durable and remove marks left by grease, water, dirt and fingerprints. Franke Water Systems supplies cleaning products that provide optimum protection for stainless steel surfaces.

High-quality 1.4301 stainless steel, whether satin finished or polished, fulfils requirements in terms of hygiene as well as resistance to corrosion, temperature and acid. The perfect conditions for use in industrial companies.



#### **SIRIUS utility sinks with folding grid**

A wide range of cleaning and utility sinks are available to meet the toughest requirements in industry and trade. These basins, made of high-quality 304 chrome-nickel steel with a satin finish, are fitted with practical folding grids to hold cleaning tools.

#### **SIRIUS washing troughs**

Uncompromising cleanliness is the utmost priority for seamlessly welded washtroughs that meet the strictest hygiene requirements. A sleek, evenly welded seam attaches the 1.2 mm-thick side walls to the precisely curved casing, thereby preventing dirt and bacteria from adhering to surfaces. This range offers a solution for any specification, with variants including, with or without the tap ledge, a single or double washtrough, or for wall or inset mounting.



# Professional hand hygiene

## Touch-free cleanliness for effective protection against infections.

Our RODAN, STRATOS and EXOS. accessories ranges offer professional customers high-quality solutions for washrooms and WC rooms with high footfall. The electronic disinfectant dispensers in these three ranges offer additional benefits – they are ideal for fixed installation on the wall or for mobile use on a free-standing mounting stand that can be positioned in entrances, exits and corridors.

Visually, the dispensers are, of course, designed to complement the touch-free soap dispensers in the corresponding design ranges, meaning they can be installed next to these dispensers at a hand wash basins. Touch-free opto-electronic taps from the Franke taps range also contribute to hygienic cleanliness.



Ideal for use on the go:  
The premium mounting stand  
made of stainless steel, with  
a touch-free disinfectant  
dispenser in the EXOS.  
accessories range.



”

WE ARE YOUR PARTNER  
FOR HYGIENE AND CLEAN-  
LINESS IN FAR MORE  
THAN JUST SANITARY  
FACILITIES



#### **EXOS. electronic disinfectant dispenser**

EXOS. accessories are particularly suitable for use in high-quality sanitary fittings, such as those in offices and administrative buildings, thanks to their standardised design language and linear, timelessly elegant appearance. This range is designed to be modular and interchangeable. EXOS. products are available for surface mounting and for recessed mounting. The touch-free disinfectant dispensers can also be combined with the free-standing mounting stand.



#### **RODAN electronic disinfectant dispenser**

The puristic RODAN accessories feature a clear linear design and angular side profiles, creating a modern, attractive design in frequently used building facilities that need to meet tough hygiene requirements.

The versatile range of RODAN accessories allows designers and users to create economically efficient, flexible designs for sanitary facilities.



#### **STRATOS electronic disinfectant dispenser**

The STRATOS accessories range combines attractive design and clear functionality to create a modern look. This combination allows the satin finished stainless steel material to shine. The arced design guides onlookers' eyes over the sweeping, satin finished, stainless steel surfaces. Clear straight edges both contain the dispensers and ensure that they blend in harmoniously with their surroundings.

# First aid in an emergency

## Emergency showers for eyes and body.



A space-saving emergency shower combination consisting of a body shower with a pull-handle and an eye wash fountain completes the range of first aid taps.

Emergency showers are used in areas where employees are at risk of injuries such as contamination or burns. This includes laboratories, production facilities, kitchens, workshops, petrol stations, transport companies and pathology departments. The main hazards are highly flammable substances, aggressive liquids, flying chips, dusts and vapours which can cause skin burns and eye injuries.

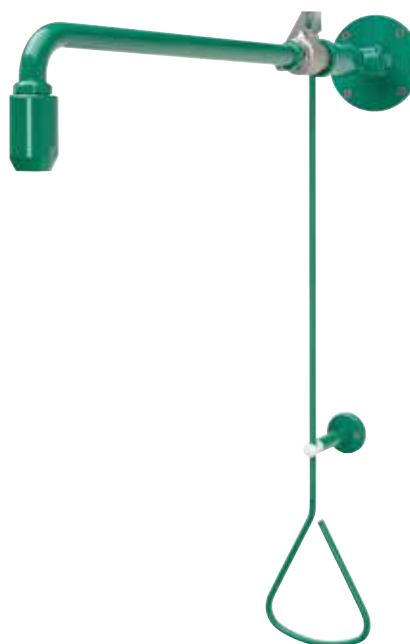
Immediately applying unlimited amounts of water to the affected areas helps to limit the extent of the injuries in both the short and the long term.

The correct operation and installation of these emergency shower facilities is regulated in the relevant national and international standards and guidelines. These include the EN standards (European Committee for Standardization) 15154-1, 15154-2, 12899-3 and the ANSI standard (American National Standards Institute) ANSI Z35B.1-2014.



”

EMERGENCY SOLUTIONS  
FROM FRANKE FOR ANY  
INSTALLATION NEEDS



### Emergency body showers

In case of a burn or of contact with a substance which is hazardous to health, the injured person must be able to immediately douse themselves with sufficient water. To do this, body showers must be installed at the exits of hazardous working areas. They must be easy and self-explanatory to operate. Body showers from Franke comply with the standards and regulations and meet all safety requirements. With a wide variety of products, we can offer a suitable solution for every building.



### Eye and face fountain with water collection basin

Franke eye and body showers can be used in fixed and mobile installations. If the valve is opened with the shower in its holder, then both hands are available to hold the eyes open. If the eye fountain is removed from its holder then the source of water can be taken to the injured person. The product range not only includes complete units with a basin to catch the water, made of impact resistant, unbreakable plastic, but also versions for wall mounting and table top installation.



Franke Water Systems

[ws-info.int@franke.com](mailto:ws-info.int@franke.com)  
[www.franke.com](http://www.franke.com)

