

Maritime & Industrial Acoustic Comfort

(polymer converting)

Marine | Cabin | Wind Power | Camping | Ventilation | Generators | Office



Sound insulation | Acoustic absorption | Vibration damping | Thermal insulation | Technical applications

- » Vertical cutting
- » Water jet cutting
- » Contour cutting
- » Thermo forming
- » Horizontal cutting
- » Foil- and adhesive lamination
- » Punching
- » 3D Cutting



www.b6akustik.dk



www.b6tech.dk



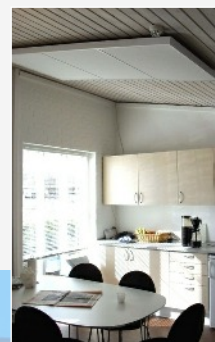
A safe choice

In a time of globalization, you and I have to face many difficult choices and questions, when we seek to find the most suited sound and vibration damping solution, perhaps even combined with a good thermal insulation, for the new projects.

With our wide international experience within sound and comfort, B6 Akustik is able to fulfil all of your polymer needs.

Our wide product range of insulation systems is designed for many different applications and purposes and for miscellaneous industries. We cover all thinkable polymer situations.

B6 Akustik makes products with technical polymer comfort, within acoustic and thermal solutions to more than twenty industrial branches.



DS/EN ISO 14001:2004



B6 Akustik A | S
Denmark



Sound insulation & Sound damping

When you try to better the acoustic in a motorized cabin, or silence an engine room or an engine, there are a range of different material types, which to a varying extent can help to solve the task.

The choice of insulation material

Your material choice should always depend of the problem you have to solve. You should always pay great attention to the four following topics:

- The absorbent/insulator material
- The type of adhesive
- The surface foil (or the textile)
- The thickness of the material

You are very welcome to contact one of our consultants if you need specific advice - without any obligations!



Polyurethane foam (PUR)

PUR foam can be used for the most purposes. The density is typically from 28 to 55 kg/m³ – and the material can be delivered in every thinkable geometric dimensions. The material can be laminated with different types of foils and adhesives.

Regenerated foam (RE)

Regenerated PUR foam (Called: Bonded Foam) can be used for the most purposes. The density is typically from 80 to 230 kg/m³ – and the material can be delivered in all thinkable geometric dimensions. The material can be laminated with different types of foils and adhesives.

Polyethylene foam (PE)

Polyethylene PE foam is primarily used for thermal purposes, and it does not absorb moisture. The density is typically approx. 30 kg/m³. Depending on the material type, you can laminate this with foils and adhesives.

Metal absorber

This material is highly suitable, where demands for cleaning and fire safety are particularly high, and on places where it is difficult to mount other products. The product is self-sustaining and has a very long durability.

Mineral wool

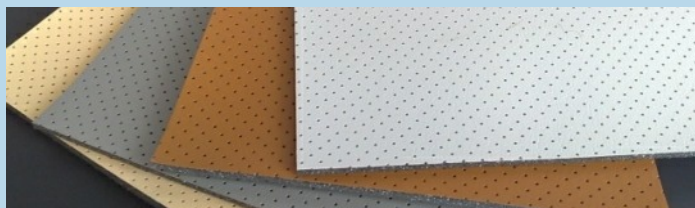
We use mineral wool in our products for room-acoustics, as the demands from the fire authorities are very high on these products. The product has a very good sound absorption ability, but it does not stand up to humid environments.



Surfaces

Choose the right surface (foil) - suitable for your thoughts

There are different demands to what you want to signal with the appearance of your sound insulation material. Typically the distinction is made between a textile-foil, PES aluminium foil, PU-foil or a PVC-foil.



Standard PVC, PU, PES and ALU surfaces, etc..

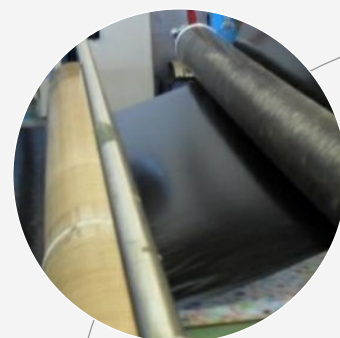
At B6 Akustik, we stock a range of standard surfaces. If you want a very special and unique surface, you are welcome to contact one of our consultants to have a dialogue about the possibilities.



Surface codes

Find the right surface (foil) code.

Surface code	Description / Colour	Thickness
0152/02	Charcoal grey, canvas look, PVC, 2% perf.	250 µ
7202/02	Light grey, Leather look, PVC, 2% perf.	250 µ
7173/02	Charcoal grey, Leather look, PVC, 2% perf.	250 µ
6312/02	Cognac, Leather look, PVC, 2% perf.	250 µ
6659/02	Beige, Leather look, PVC, 2% perf.	250 µ
8011/02	Black, Leather look, PVC, 2% perf.	250 µ
8011/25	Black, Leather look, PVC, 25% perf.	250 µ
677	White, Leather look, PVC, 25% perf.	250 µ
8011	Black, Leather look, PVC.	250 µ
PU White	White foil, plain, PU	20 µ
PU Gray	Grey foil, plain, PU	20 µ
PU Black	Black foil, plain, PU	20 µ
ALU	Alu foil, plain, Metalized PES	12 µ
TE - Loopgrey	Textile, w/ airflow	2-3 mm



DS/EN ISO 14001:2004



Adhesive

Make sure that you always get the right adhesive (tape) on your product!

When you have to fasten your acoustic material with an adhesive, you have to focus on the materials surface tension (needs to be high, best > 38 dyn)

Surface tension

If there is a low surface tension (dyn/cm), it is difficult for most of the adhesives to fasten - then you have to ask for a very aggressive adhesive.

Things to remember before mounting the adhesive!

- Always, remember to ensure a 100% clean surface e.g. by washing with suitable detergents.

- Do grind of the surface lightly with sandpaper before the use of adhesive (that will ensure a higher surface tension).



The adhesive has a higher surface tension than the surface, which has to be glued.

This will result in a bad tack on the surface. The opposite, where the glue



has the lowest tension and floats out on the surface.

This will result in a positive tack on the surface.

Decription / Colour	MK	MK5	MK8	MK12	MK13
One layer Adhesive – transfer tape	–	Yes	–	Yes	–
Two layer Adhesive (w/ carrier)	Yes	–	Yes	–	Yes
Tissue carrier	Yes	–	Yes	–	Yes
PES/PVA net- carrier	–	–	Yes	–	Yes
Adhesive (Acrylic, Rubber synthetic)	Acryl.	Acryl.	Acryl.	Acryl.	Rub.
Tack (moderate, good, aggressive)	Mode.	Good	Good.	Aggr.	Aggr.
Adhesive (moderate, good, aggressive)	Good	Good	Good	Aggr,	Aggr.
Liner: Silicone, PE coated	Silic.	Silic.	PE.	PE	Silic.
Liner colour: Yellow, White or Brown	Yellow	Yellow	White	White	Brown
Slow aging process	Yes	Yes	Yes	Yes	Yes
UV resistant	Yes	Yes	Yes	Yes	Yes
Low surface tension	Yes	Yes	Yes	Yes	Yes
Resistant against moisture	Yes	Yes	Yes	Yes	Yes
Resistant against high temperature	Yes	Yes	Yes	Yes	Yes
Adhesion on stainless steel (25 mm)	13N	20N	10N	28N	55N
Temperature (on application)	-40° to 120° C	-40° to 95° C	-40° to 70° C	-40° to 100° C	-40° to 50° C
Mounting temperature / Storage temperature	Min. 15°C	Min. 15°C	Min. 15°C	Min. 15°C	Min. 15°C



Product examples

The choice of insulation material

MOTOR (ENGINE) SOUND INSULATION (ISOFLOCK ®)

TYPE: AL-40-MK-RE100X

Regenerated foam with a density of 100 kg/m³. Used for e.g. maritime engine compartment insulation. The product is treated with a flame retardant, and covered with a strong heat reflecting aluminium foil, and a strong adhesive tape on the back side. Possibility of edge seal with aluminum foil.

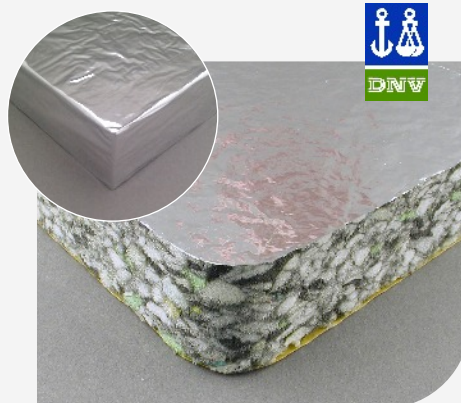
Approved by "Det Norske Veritas" ISO 9094-1 and ISO 9094-2.

Approved according to ISO 4589-3, and fire resistant according to the US norm FMVSS-302

Thickness	Width	Length	Comments
20 mm	1000	2000	adhesive on the back and alu foil on the top.*
30 mm	1000	2000	-//-
40 mm	1000	2000	-//-
50 mm	1000	2000	-//-

**: with or with out adhesive tape
Contact us if you need other dimensions.*

Marine
DNV approved!



MOTOR SOUND INSULATION (ISOBOAT ®) – for the low frequencies

TYPE: B6-ISOBOAT

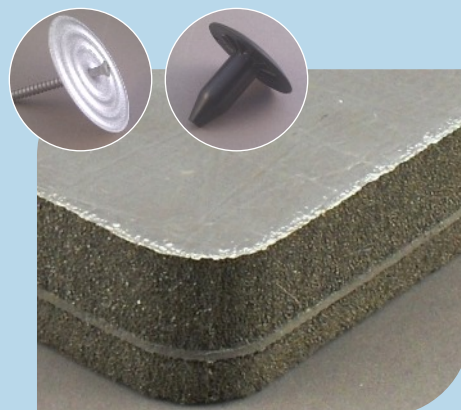
Fire resistant PU foam material with a heavy foil in the middle and an aluminium foil on the top. Is used for maritime engine compartment insulation. The product is fire resistant and comes with a strong heat reflecting aluminium foil, and a strong adhesive on the back side.

Approved by "Det Norske Veritas" ISO 9094-1 and ISO 9094-2.

Approved according to ISO 4589-3, and fire resistant according to the US norm FMVSS-302

Thickness	Width	Length	Comments
33 mm	1000	600	alu foil on the top*.

**: Option: with or with out adhesive tape
Contact us if you need other dimensions.*



B6 ISONYL (SOUND BARRIER)

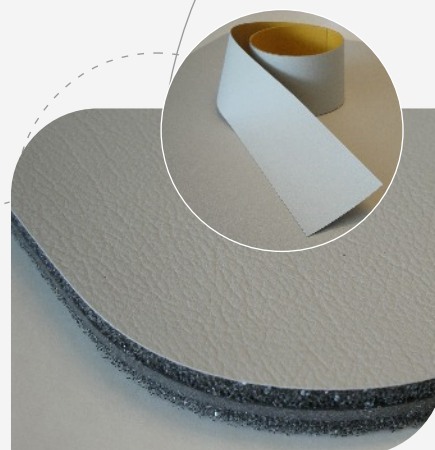
TYPE: 00-03-UK-B028 7202/BM0060/XX-03-UK-B028

Usage: Structure sound barrier - direct mounting on the interior structural surfaces (eg. Marine) - meets the fire requirements on FMVSS 302.

- Leather structure surface, Colour (black, white, light gray) + Alu
- Dimension: 1200 x 1500 x 9 mm
- Heavy layer plate: 7-8 kg/m²
- Joints: Tape the joints with associated tape roll surface
- Three layer construction: 3mm PU + 3 mm Heavy EPDM + 3mm PUR + PVC foil

Thickness	Width	Length	Comments
09 mm	1200	1500	PVC foil on the top (leather look) and/or Alu*.

**: Option: with or with out adhesive tape
Contact us if you need other dimensions.*





Product examples

The choice of insulation material

13 mm HEAVY LAYER, FOAM, ADHESIVE

TYPE: BI-13-MK-B028

This special sandwich construction is primarily used in boats or steel constructions to absorb the structure borne noises. The material is typically mounted directly on the steel or aluminium constructions, where absolute flexibility is needed. Can be achieved with or without adhesive tape (std = with adhesive tape).

The panels are fire resistant according to the US norm FMVSS-302.

Density: 6-7 Kg / m²
Material size: 1200 x 1500 x 13 mm

Contact us if you need other dimensions.



SELF ADHESIVE PU FOAM (WITH PVC FOIL)

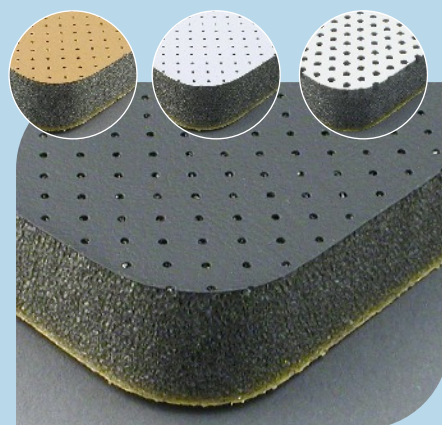
TYPE: 02-40-MK-B028-7202

Is used for lining in engine rooms, machine guards, noise cabins, electrical –panels, panels, packaging inserts etc. Meets the fire requirements on FMVSS 302.

Density: 28-30 Kg / m³
Material size: 1200 x 1500.

Thickness	Width	Length	Comments
20 mm	1200	1500	adhesive on the back and perforated foil on the top
30 mm	1200	1500	-/-
40 mm	1200	1500	-/-
50 mm	1200	1500	-/-

Contact us if you need other dimensions.



SELF ADHESIVE PU FOAM (WITH PU FOIL)

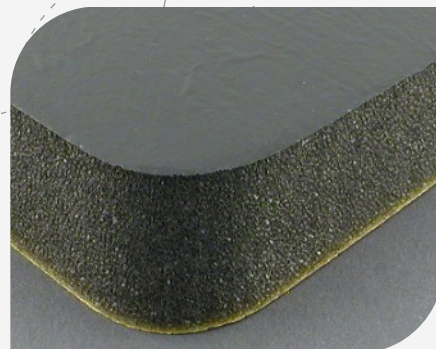
TYPE: PU-40-MK-B028

Is used for lining in engine rooms, machine guards, noise cabins, electrical –panels, panels, packaging inserts etc. Meets the fire requirements on FMVSS 302.

Density: 28-30 Kg / m³
Material size: 1200 x 1500.

Thickness	Width	Length	Comments
20 mm	1200	1500	adhesive on the back and a thin PU foil on the top
30 mm	1200	1500	-/-
40 mm	1200	1500	-/-
50 mm	1200	1500	-/-

Contact us if you need other dimensions.





Product examples

The choice of insulation material

EGG TRAY FOAM (Polyester foam, 33 kg/m³)

TYPE: XX-30-MK5-C033 30/15

Polyester foam, with a profile shaped like an egg tray, which gives an especially big absorbent surface, and a good sound absorption. Meets the fire requirements on FMWSS 302

Thickness	Width	Length	Comments
30/15 mm	1200	1500	With or without adhesive tape on the back side

Contact us if you need other dimensions.



THERMO FORMED SURFACES ON FOAM

TYPE: VX-25-MK5-C035 or (VX-25-UK-BASO)

The surface is thermo formed directly into the material with a customized heat mould. We can make all kinds of patterns (knobs, circles, lines, logos, etc)

The material (foam) we normally use for this process would be Polyester (C033 or C035) or Malamine Basotect foam.

Thickness	Width	Length	Comments
25mm	1000	1500	With or without adhesive tape on the back side

Contact us if you need any specific dimensions.



SELF ADHESIVE FOAM WITH ALU

TYPE: AL-20-MK8-B028

Is used for lining in engine rooms, machine guards, noise cabins, electrical – panels, panels, packaging inserts etc. Meets the fire requirements on FMWSS 302.

Density: 28-30 Kg / m³
Material size: 1200 x 1500.

Thickness	Width	Length	Comments
20 mm	1200	1500	adhesive on the back side and a thin ALU foil on top
30 mm	1200	1500	-/-
40 mm	1200	1500	-/-
50 mm	1200	1500	-/-

Contact us if you need other dimensions.





Product examples

The choice of insulation material

B6 METAL ABSORBER (Micro perforated Aluminium plate)

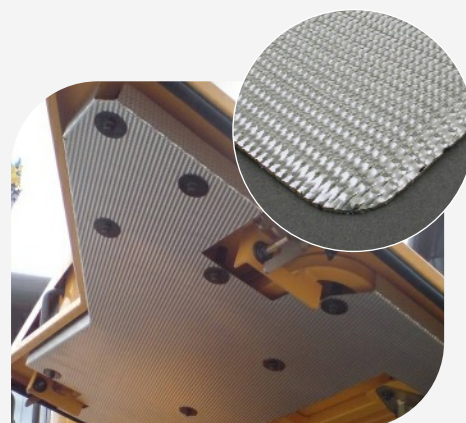
TYPE: B6 METAL ABSORBER

Special developed (patented) perforated aluminium-plate, which by virtue of an underlying air gap, acts as a sound absorber. The metal absorber is particularly suited in environments, where demands for cleaning hygiene and/or fire safety are particularly high.

Thickness	Width	Length	Comments
1 mm	1000	2000	(+anodizing for salt-water environment)

- CANNOT burn! (99,5% pure aluminium)!
- Does not absorb water and is easy to clean.
- Does not age and is easy to mount.

Contact us if you need other dimensions.



WHISPER (Polyethylene, self-sustaining sound absorber)

TYPE: WHISPER (QUASH) - BLACK or WHITE

The scopes can typically be sound absorption in engine rooms, generators, ventilators, turbines, pumps, compressors and other noisy machines, where it's possible to separate the noise source from the surrounding area.

The product is washable (high pressure washed) without being damaged!
Meets the fire requirements on FMWSS 302, UL 94-HF1 and B1.

Thickness	Width	Length	Comments
30 mm	1000	2400	with / without adhesive on the back
40 mm	1000	2400	with / without adhesive on the back
50 mm	1000	2400	with / without adhesive on the back

Two foam types:

- » Ethafoam (30, 40, 50 mm - black and white colour)
- » Stratocell (50 mm - only black colour)

Contact us if you need any specific dimensions.



BASOTECT®

TYPE: BASOTECT, Density from 9-11 kg/m3

Basotect® is a flexible, open cell foam made from melamine resin, a thermoset polymer.

Sound absorption

Basotect®'s open-cell surface guarantees that sound waves are not reflected as an echo but can penetrate the cell structure unhindered. The sound energy is reduced in the cell structure, giving Basotect an excellent sound absorption capacity. At low frequencies, improved sound can be achieved, e.g. by adding layers of a heavier material.

Flame resistance (without the addition of flame retardants)

DIN 75 200, ISO 3795, FMVSS 302, UL 94 HF1, UL 94 V-0, DIN 4102 B1

Other skills: Application temperature up to 240°C, Abrasiveness

Contact us if you need other dimensions.





Heavy Layers

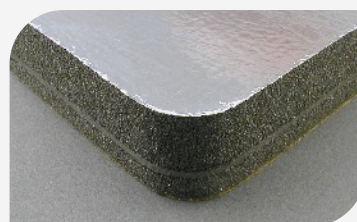
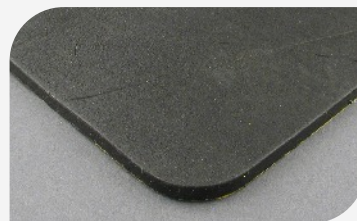
Mechanical energy (resonance)

When a piece of material is exposed to mechanical energy (also known as kinetic energy) this will create resonance and generate unwanted sound.

If you think of the construction of a Boat, or a Vehicle, it is exposed to massive mechanical influences from the motor (engine), the gear box, the wheels, the bumpers etc. This all generate massive unwanted sound, where we need to place something on, to absorb the mechanical energy (resonance).

B6 have several solutions to offer, like heavy layer Bitumen sheets or heavy layer EPDM sheets. These sheets can be achieved with or without adhesive tape.

B6 Akustik also manufacture Sandwich combinations.
You decide the look and the thickness - and we simply produce it!



Type	Description	Material	Foil	Std measures
B6 A2	2 mm ($\approx 3\text{--}4\text{ kg/m}^2$)	Bitumen	PES	1020 x 820 mm
B6 A3	3 mm ($\approx 5\text{ kg/m}^2$)	//-	//-	1020 x 1220 / 1200 x 1500 mm
B6 A4	4 mm ($\approx 8\text{ kg/m}^2$)	//-	//-	1020 x 820/1220/1520 mm
B6 A5	5,5 mm ($\approx 10\text{ kg/m}^2$)	//-	//-	1020 x 820/1220 mm
Heavy Layer 3	3 mm ($\approx 5\text{ kg/m}^2$)	Bitumen/EPDM	none	1220 x 1520 mm
Heavy Layer 4	4 mm ($\approx 8\text{ kg/m}^2$)	//-	//-	1020 x 1220 mm
Heavy Layer 5,5	5,5 mm ($\approx 10\text{ kg/m}^2$)	//-	//-	1200 x 1520 mm
Damping cardboard	1,5 mm ($\approx 1,25\text{ kg/m}^2$)	Impr. Bitumen	none	1020 x 1220/1520 mm
-//-	2 mm ($\approx 1,6\text{ kg/m}^2$)	//-	//-	1000 x 1000 mm
BM0060	2,4 mm ($\approx 5\text{ kg/m}^2$)	PVC base	none	1200 x 1000/1500 mm
BM0070	3,0 mm ($\approx 8\text{ kg/m}^2$)	//-	//-	1200 x 1500 mm

Nice to know:

B6 (A2-A5)
Heavy layer
Cardboard
BM00XX

most used in bodywork panels - low cost material - rigid
very flexible material - heat sensitive - semi cost material - semi soft
Semi flexible - light weight - typical used on movable panels - semi rigid
very flexible material - often used in laminations with PUR foam - soft



Product examples

The choice of insulation material

BITUMEN DAMPENING PLATES (HEAVY FOIL)

TYPE: BITUMEN B6-A2 (A3 / A4 / A5)

Remove the structural noises and vibrations. B6 have several solutions to offer, like heavy layer Bitumen sheets or heavy layer EPDM sheets. These sheets can be achieved with or without adhesive tape.

The sheets comes with self adhesive backs and they are fire resistant according to The US norm FMVSS-302.

2 mm	($\approx 3\text{-}4 \text{ kg/m}^2$)	1020 x 820 mm
3 mm	($\approx 5 \text{ kg/m}^2$)	1020 x 1220 / 1200 x 1500 mm
4 mm	($\approx 8 \text{ kg/m}^2$)	1020 x 820/1220/1520 mm
5,5 mm	($\approx 10 \text{ kg/m}^2$)	1020 x 820/1220 mm

Contact us if you need other dimensions.



BITUMEN/EPDM DAMPENING PLATES (HEAVY FOIL)

TYPE: HEAVY LAYER (lydfolie)

The sheets comes with self adhesive backs and they are fire resistant according to The US norm FMVSS-302.

3 mm	($\approx 5 \text{ kg/m}^2$)	1220 x 1520 mm
4 mm	($\approx 8 \text{ kg/m}^2$)	1020 x 1220 mm
5,5 mm	($\approx 10 \text{ kg/m}^2$)	1200 x 1520 mm

Contact us if you need other dimensions.



BITUMEN IMPREGNATED DAMPENING PLATES (HEAVY FOIL)

TYPE: DAMPING CARDBOARD (planpap)

The sheets comes with self adhesive backs and they are fire resistant according to The US norm FMVSS-302.

1,5 mm	($\approx 1,25 \text{ kg/m}^2$)	1220 x 1220/1520 mm
2 mm	($\approx 1,6 \text{ kg/m}^2$)	1000 x 1000 mm

Contact us if you need other dimensions.





Product examples

The choice of insulation material

B6 - RUBBER, FLOORS AND FOODBRIDGES

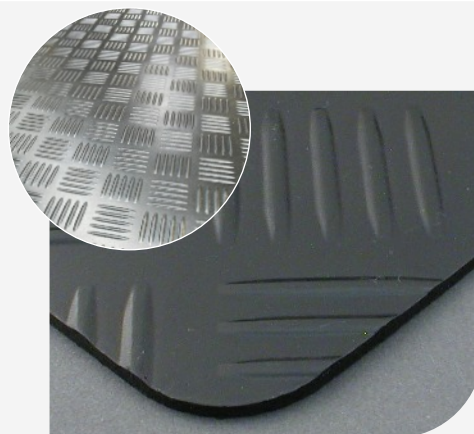
TYPE: SHIP MAT (2394: Oil resistant or 1729: Normal)

This Rubber is typically used as flooring in driver's cabins, luggage- and cargo holds etc. Where demands for slip resistance and cleaning are particularly high.

Thickness	Width	Length	Comments
3mm	1200	/rolls	-
3mm	1400	/rolls	-
5mm	1400	/rolls	-
3mm	1200	/rolls	With textile on the back side.

The Rubber mat is available in oil resistance qualities, and also with or without adhesive.

Contact us if you need other dimensions.



B6 - RUBBER, FLOORS AND FOODBRIDGES

TYPE: BLACK CIRCULAR MAT

This Rubber is typically used as flooring in driver's cabins, luggage- and cargo holds etc. Where demands for slip resistance and cleaning are particularly high.

Thickness	Width	Length	Comments
4,5mm	1000	/rolls	-

The Rubber mat is available in oil resistance qualities.

Contact us if you need other dimensions.



B6 - RUBBER, FLOORS AND FOODBRIDGES

TYPE: STANDARD MAT

Rubber with shock absorbing PE foam (better comfort)

This Rubber is typically used as flooring in driver's cabins, luggage- and cargo holds etc. Where demands for slip resistance and cleaning are particularly high.

Thickness	Width	Length	Comments
10mm	1250	1500	With PE foam on back side

The Rubber mat is available in oil resistance qualities.

Contact us if you need other dimensions.





Product examples

The choice of insulation material

BONDED FOAM (Heavy regenerated polyurethane foam)

TYPE: 80-230 kg's BONDED FOAM, ALUFOIL, ADHESIVE TAPE

Save hours in your production work flow – and save money!

In stead of cutting out the items yourself, your productions staff will save a lot of time and effort, by having the specific items delivered – 100% cut after your measures. Do also consider buying you items is sets of multiple items, and minimize waste as well.

If you need a special polymer solution (and a special measure), B6 offer to cut out your customized items.

We are also able to handle your AutoCAD drawings and cut directly after your constructions.

Drawings in format:

- DWG and DXF
- AutoCad 2000 to 2010



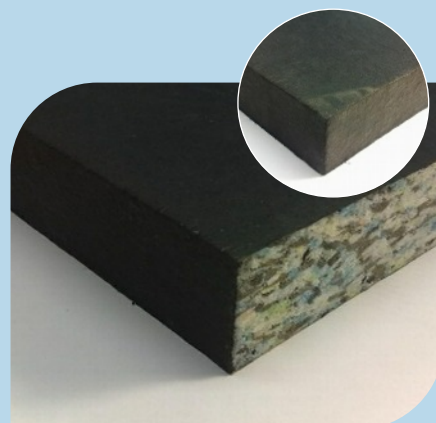
EDGE SEALING

TYPE: TIVOLEX

100% waterproof sound absorption!

In the situations, where the sound insulation must be 100% waterproof, we can recommend that you treat the edges with our B6 edge sealing (Tivoflex).

This seal consist of an applied thin flexible rubber skin that remains flexible even after hardening.



TECHNICAL POLYMER APPLICATION

TYPE: AUDIO MAZE (sound absorber in Polyurethane)

Are you producing special mechanical constructions, which requires the sound/noise to be reduces?

» We have the right know how to offer you. We also have the right acoustic solutions or application.

» We have a unique experience in industrial areas such as ventilation, pumping systems, heating systems, generators etc.

Contact us if you need advice and info about special material and dimensions.





Product examples

The choice of insulation material

THERMAL INSULATION

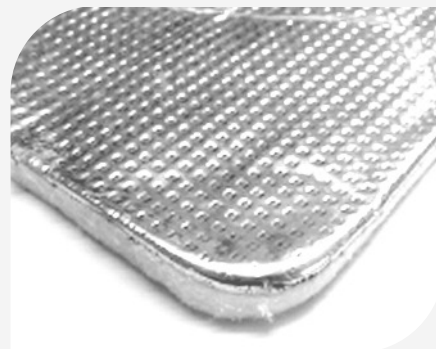
TYPE: B6 HIGH TEMPERATURE INSULATION (Fibre glass)

Sound absorption and heat insulation, on fields with high temperature and humidity. Applications areas like engine rooms, around exhaust systems and catalysts, turbo chargers etc.

Hight (thickness): from 7 mm
Temp. resistance: from - 40°C to + 250°C
Heat resistance: from 0,02 to 0,04 W/mk
Material size: 100 x 160 cm.

Fire resistance cf. the US norm FMVSS-302 SE, To be mounted on a cleaned surface at 18°C.

Contact us if you need advice and info about other dimensions and other thicknesses.



THERMAL INSULATION

TYPE: PE FOAM (Polyethylene)

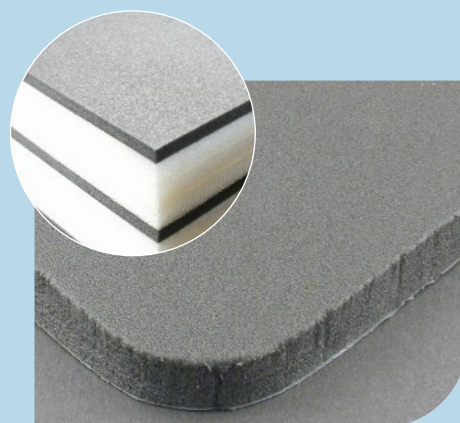
A thermal calculation on a better insulation, requires knowledge of the thermal conductivity of a certain material.

» We can make thermal calculations for you!

» B6 Akustik produce many thermal applications, typically in PE foam (polyethylene). The thermal conductivity in PE foam is in general between 0,030 – 0,040 W/mk (known as the λ value).

Specifications:

- PU foam, range from 5 - 100 mm (thickness)
- Colours: White, Black Antracite Gray, Blue, Yellow, Red, Green.
- Thermal conductivity: between 0,030 – 0,040 W/mk
- Fire properties: FMVSS 302 (available in UL94 HF1 and B1)



PUR FOAM, FIRE RETARDANT, UV STABLE

TYPE: VX-40-MK-C035

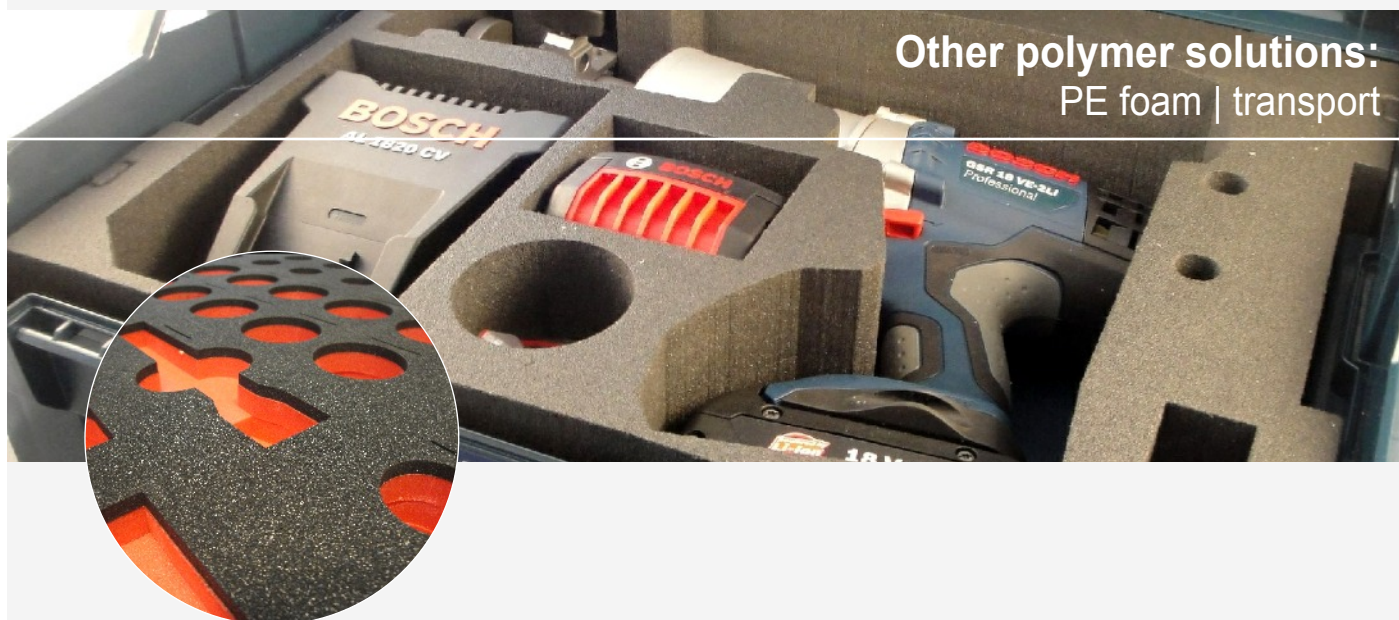
When your construction requires an Polyurethane foam, without any applied top foil, we recommend to use an UV stable PUR foam.

We are also able to offer you foam with different levels of fire retardant skills. The product shown on the right picture is an esther based PUR foam, which complies to following fire ratings:

- DIN 75 200
- ISO 3795
- FMVSS 302
- UL 94 HF1

Contact us if you need advice and info about special material and dimensions.





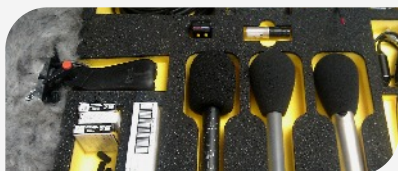
Other polymer solutions:
PE foam | transport

Creative designs and solutions

We have the cutting flexibility

Our cutting possibilities make it possible to design and produce all kinds of solutions in PE foam.

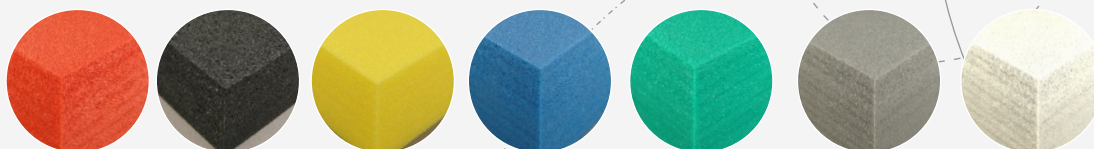
- » Minimize the transport damages caused by vibrations on your tools or accessories.
- » Use 3D shaped PE foam and be inspired by our creative thinking - several layers and various colours.



Polyethylene Foam (PE)

Our closed-cell Polyethylene foam is very strong and flexible. Its durability makes it ideal for preserving the integrity of just about any object as it can handle repeated shocks and impacts. In order to cushion and protect fragile items, our PE foam is cut into a suitable shape and size, creating a special cushioned housing for the ultimate level of protection during shipping or transport.

Whether your item weighs only a couple of kilos or a couple hundred kilos, our PE foam are available in a variety of strengths and densities. Thanks to its strength and high load bearing characteristics, your packaging costs can be greatly reduced since it can be reused several times.





Improve your Office acoustic

Reduces the reverberation time (echo effect)

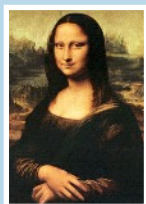
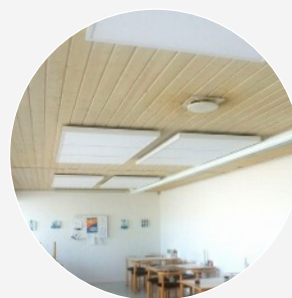
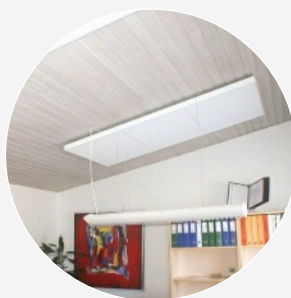


OFFICE ACOUSTIC

TYPE: AntiNoise® (panels for ceiling and walls)

With AntiNosie® panel for your office areas – we can help you reduce the disturbing echo effect in the room, and make it remarkable easier to have an important conversation.

The AntiNosie system is very easy to mount - takes only a few minutes. The product includes all the needed mounting gear, you don't need to buy anything else.



Make your favourite image or picture

Printing directly on the surface

Let us print your favourite image or picture directly on the panels.

We can offer a printing method, where the acoustic effect will stay intact.

You can choose from a variety of our pictures, or you can send us your own picture or even Company logo.

Specifications

Type 1: 1800 x 900 x 50 mm

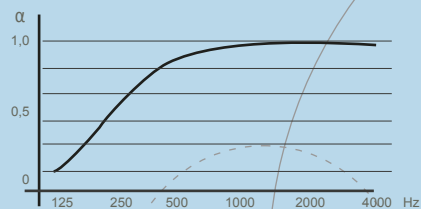
(2 psc per colli)

Type 2: 900 x 600 x 50 mm

(4 psc per colli)

Sound absorption measures according to ISO 354.

The Sound absorptions coefficients α_p and α_w (0,8) is calculated according to ISO 11654.



Easy mounting system



Reduce the reverberation time in your Production areas

For General industries & Food industry facilities.

INDUSTRY ACOUSTIC

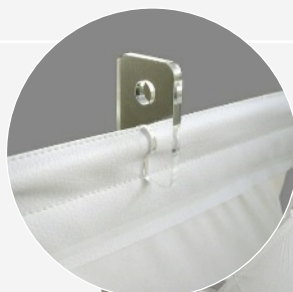
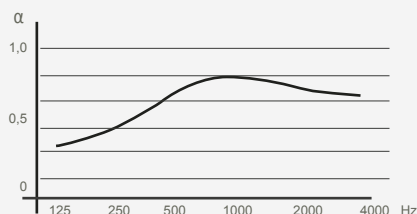
TYPE: AntiNoise® (sound baffles ceiling and walls)

Reduce the reverberation time in your production areas, with the AntiNoise sound baffles from B6.

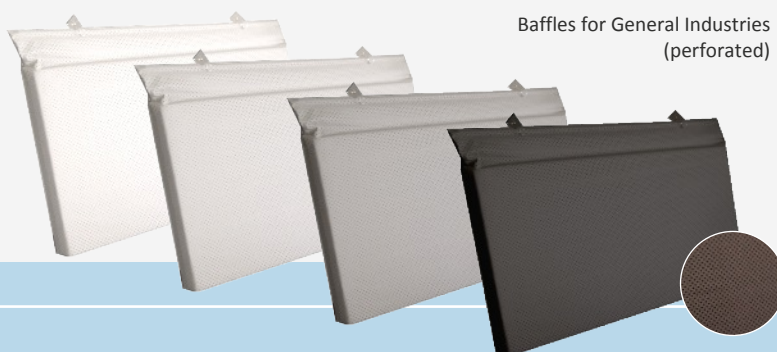
The baffles make it easy to have a conversation, without the disturbing echo effect in the production areas.

The sound baffles are very easy to mount. Use the included acrylic hooks - just slide them horizontally over the top edge, and find the right angle for the wires.

Sound absorption - measures according to ISO 354. The Sound absorption coefficients α_p and α_w (0,7) is calculated according to ISO 11654.



Baffles for Food Industry
(water proof)



Baffles for General Industries
(perforated)

Advantages with the Sound baffle:

» AntiNoise sound baffles is designed with a wedge-shaped top, so that dust and other elements can easily be washed down, or blown away with compressed air.

» The AntiNoise sound baffles, can be mounted as a wall solution as well as hanging down from the ceiling in wires.

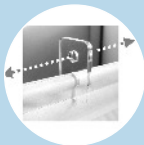
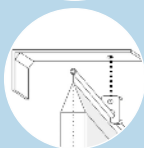
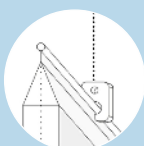
» The joints are made inside the baffles, and with a specially developed watertight closure, in order to eliminate dust and moisture to be trapped in the corners.

» The AntiNoise sound baffles are very easy to mount (and to fixate) in the supplied hooks. The special developed suspension system is designed to carry the baffle directly in the metal bar.

Specifications

1200 x 600 x 40 mm

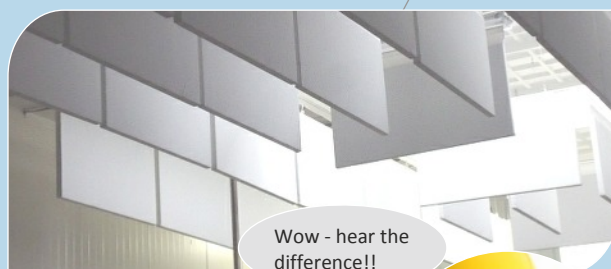
You will notice the difference right away!



Two types

Special designed for general **industrial facilities**.
Called: Industrial sound panels (baffles)

Special designed for the **food industry**.
Called: Hygiene sound panels (baffles)



Wow - hear the difference!!





Decibel (dB) - from the real life!

Be aware of the risk..!

The dB scale

From whisper in the ear, to the launch of a Rocket.



The structure of our Article Numbers

Learn how to decode our article numbers (decryptions)

Article code

All our article numbers are structured according to the principle described below.

- An example: showing the article number [**AL-30-MK-RE80**].

AL -

Surface

30 -

Total thickness
in mm

MK-

With or without
adhesive, cardboard
or sound foil

RE80

Foam Quality

(none)

Colour code on top
folio (textile, PU or
PVC)

Key to signatures

AL - Metallized polyester
PVC - PolyVinylChloride
PU - Polyurethane
VX - Thermoformed
XX - No foil

05 - Thickness in mm
10 - mm
20 - mm
30 - mm
Etc..

MK - With adhesive
UK - Without Adhesive
SIL - Silica gauze
BI - Bitumen
Etc..

RE - Bonded Foam
B028 - Polyurethane, Ether
C033 - Polyurethane, Esther
BASO - Melamine (Basotect)
Etc..

7202 - Light grey
7173 - Charcoal grey
8011 - Black
0677 - White
Etc..



Scan the QR code, and get directly access to your acoustical website:

www.b6akustik.dk



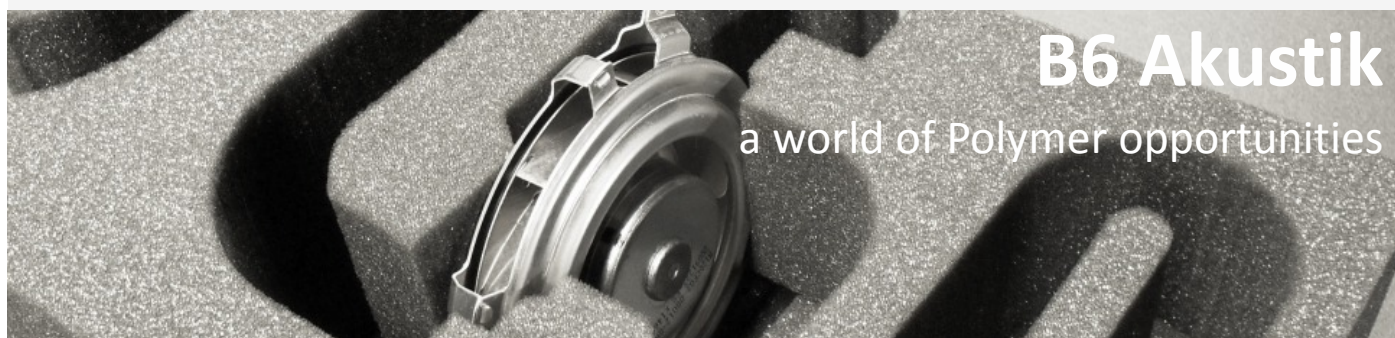
Scan the QR code, and get directly access to your technical polymer website:

www.b6tech.dk

You need to have access to the internet, and you need to use a "QR" code app (like ScanLife), which can be used on all Smartphone's.



DS/EN ISO 14001:2004



B6 Akustik

a world of Polymer opportunities

Make your own notes:

.....

.....

.....

.....

.....

.....

.....

.....

.....

.....

.....

.....

B6 Akustik A|S

Tranåsvej 5-7
9300 Sæby
Denmark

Phone. +45 99 89 10 50 / Fax +45 99 89 10 60
Web: www.b6akustik.dk & www.b6tech.dk
Email: email@b6akustik.dk
VAT No: 62 12 48 14



www.b6akustik.dk



www.b6tech.dk