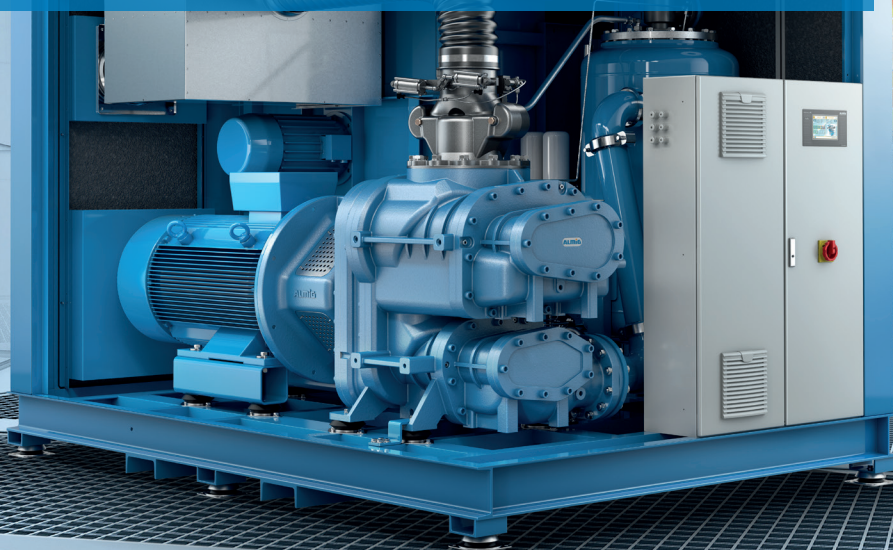


COMPRESSOR SYSTEMS
MADE IN GERMANY

The new G-Drive T from ALMiG: The world's most en**AIR**gy efficient screw compressor.*

ALMiG
Compressor Systems



Application

Compressed air generation

Power output

250 - 315 kW (90 - 160 kW
available soon)

Volume flow acc. to ISO 1217 (Annex C-2009)

14,6 - 51,5 m³/min

Operating pressure

5 - 13 bar

Cooling

Air-cooled

Drive

Gear

* $P_{spez} = 5,34 \text{ kW}/(\text{m}^3/\text{min})$
at 200 kW, 7 bar

EnAIRgy efficiency on a new level

ALMiG's two-stage G-Drive T series sets new standards in enAIRgy efficiency.

How you can benefit from this?

- Reduce your energy costs drastically through two-stage compression
- Save space thanks to the compact design
- Benefit from safe and optimum operation through intelligent compressor control
- Monitor the plant from anywhere in the world via web server
- Use the heat of the compressor by returning it to your heating or water system
- Integrated, demand-based control for up to 10 compressors
- Two-stage compression, thus low differential pressures & low thermal load
- Easy maintenance and service, optimal accessibility

You don't know whether the G-Drive T – the world's most enAIRgy efficient screw compressor – is the right choice for you?

No problem!

To introduce the world's most enAIRgy-efficient screw compressor*, we offer you a **free compressed air audit** with our energy balancing system and find out what the best solution is for you.

Register by 30th June 2018 using the following link and benefit from a free and non-binding inspection of your complete compressed air station.



www.almig.de/druckluft-audit

* $P_{\text{opt}} = 5,34 \text{ kW}/(\text{m}^3/\text{min})$ at 200 kW, 7 bar

