



# Industrial Lighting

## THE TUBE SAVER

The perfect match for fluorescent tubes

### Advantages

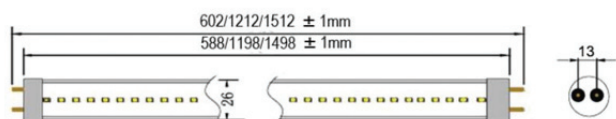
- Energy savings up to 50 %
- Long lifetime 50.000 hours
- High-Shock and High-Vibration Resistant
- High color rendering index enhances all original colors

### Product details

- The solution for fluorescent tube replacements
- Complete family from 60 cm, 120 cm and 150 cm
- The tubes are guaranteed for 5 Years
- No mercury or other harmful substances involved



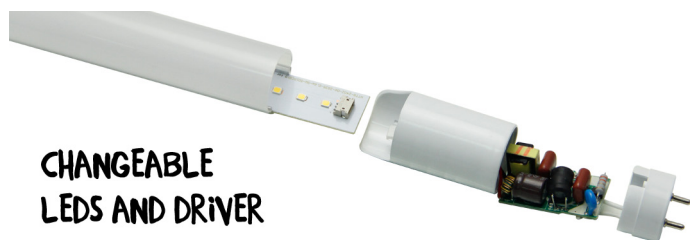
# Datasheet



<b>EQUAL TO</b>	<b>CONSUMPTION</b>	<b>EFFICIENCY</b>
<b>T8 fluorescent 36W</b>	<b>18W</b>	<b>111 lm/W</b>
<b>AC-NET</b>	<b>IP-CODE</b>	<b>DIMMABLE</b>
<b>230V</b>	<b>IP20</b>	<b>No</b>

	CW	WW	NW	R	G	B	A
Lumens	N/A	N/A	1950	TBA	TBA	TBA	TBA
Lumens pr. watt	N/A	N/A	111	TBA	TBA	TBA	TBA
Color Temp	N/A	N/A	4000	TBA	TBA	TBA	TBA
CRI	N/A	N/A	80	N/A	N/A	N/A	N/A

Cool White			Warm White			Natural White		
Ft	Lux	fc	Ft	Lux	fc	Ft	Lux	fc
2	N/A	N/A	2	N/A	N/A	2	N/A	N/A
4	N/A	N/A	4	N/A	N/A	4	400	N/A
6	N/A	N/A	6	N/A	N/A	6	130	N/A
8	N/A	N/A	8	N/A	N/A	8	60	N/A



**CHANGEABLE  
LEDs AND DRIVER**

## LED tube

**Type:** Tube Saver  
**Itemnr.:** 7047300026

Tube Saver, the new revolution in innovative LED tubes opens the door for brand new possibilities. The tube is developed to replace the standard T8 fluorescent with energy savings up to 50 %. The products are fitted with the most energy efficient SMD LEDs on the market today and a driver with a power factor of no less than 0,94. Tube Saver includes a great heat dissipation system that together with the overheating protection magnet enables the temperature in the LEDs to stay below 43° degrees. That ensures the long life time and the exceptional high energy efficiency. The products come with a changeable driver and LED board. Future maintenance is an option.

### Technical Data

<b>Lumen</b>	9W: 1.005lm, 18W: 1.950lm, 22W: 2.450 lm
<b>Beam Angle</b>	160°
<b>Colors Available</b>	Daylight white or cold white
<b>Color Temperature</b>	Daylight white 4000K, Cold white 5000K
<b>Color Rendering</b>	Daylight white: CRI80
<b>Consumption</b>	9W, 18W or 22W
<b>Voltage Range</b>	AC90 ~ 120V or AC200 ~ 240V
<b>Efficiency</b>	Daylight white: 111 lm/W
<b>Equal To</b>	Fluorecent tube T8 18W CRI80 = 36W T8 high output
<b>Lifetime</b>	50.000 hours at Ta = 25°C
<b>Dimmable</b>	No
<b>IP Code</b>	IP20
<b>Class</b>	2, Double Insulated
<b>Size</b>	L588 (9W) L1198 (18W) L1498 (22W)
<b>IES File</b>	Yes

### Energy savings up to 50%

T8 Fluorecent tube 36W HP	➡	TUBE SAVER 18W
T8 Fluorecent tube 58W HP	➡	TUBE SAVER 22W

