

# M-COMP

*Bring components to life*



## M-COMP FT150 & FT171

Stainless steel terminals for food industry

## Technical specifications

Display and touch	FT150	FT171
Size	15" TFT-LCD	17,3" TFT-LCD
Format	4:3	16:9
Resolution	1024x768	1920x1080
LED life time	50.000 Hours	50.000 Hours
Contrast ratio	700	600
Luminance	400 cd/m2	400 cd/m2
Response time	Ton: 5,7ms. Toff: 2,3ms	Ton: 37ms. Toff: 3ms
Viewing angle	12 o'clock = 60° 6 o'clock = 80° 3 o'clock = 80° 9 o'clock = 80°	12 o'clock = 60° 6 o'clock = 80° 3 o'clock = 80° 9 o'clock = 80°
Touch type	Resistive touch	Resistive touch

Computer	Common features
CPU	4th generation Intel® Core™ i3-4100E processor 2.4 GHz
Chipset	Intel® HM86
System memory	4GB DDR3L-1600 (can be other size on request)

I/O	Common features
Lan	2 x 10/100/1000 Mbps
Serial port	4x RS232 (COM)
USB port	4x USB 2.0
	2x USB 3.0 (1 free)
Power out	5VDC 1A

Storage	Common features
Type	64GB 2,5" SSD (can be other size on request)
Expansion type	Full-Size Mini PCI Express Mini Card with mSATA

Power supply	Common features
Voltage	100 – 240 VAC, 50/60 Hz
Power consumption	60 Watt

Mechanical and environment	FT150	FT171
Cabinet	AISI 316 stainless steel	AISI 316 stainless steel
Dimensions (D, H, W)	124mm x 345mm x 440mm	127mm x 337mm x 530mm
Weight	10kg	13kg
IP Code	IP65 (IP54 at cable input)	IP65 (IP54 at cable input)
Working temperature	- 10 °C to + 35 °C	- 10 °C to + 35 °C
Storage temperature	- 20 °C to + 60 °C	- 20 °C to + 60 °C
Humidity	20% to 95% not condensing.	20% to 95% not condensing.
Emission	EN 61000-6-3	EN 61000-6-3
Immunity	EN 61000-6-2	EN 61000-6-2

The M-COMP FT150 and FT171 represents two screen sizes: 15" (4:3) and 17,3" (16:9). Both models are based on the same powerful hardware: Intel Core I3, 4GB RAM and 64GB Solid-state disk.

They are IP65 dust and water proof, and are made of high quality AISI 316 stainless steel, which means they can be used in very tough environment. They also have a strong foil in front of the screen glass to ensure, that there is no scatter of glass, if the screen is broken.

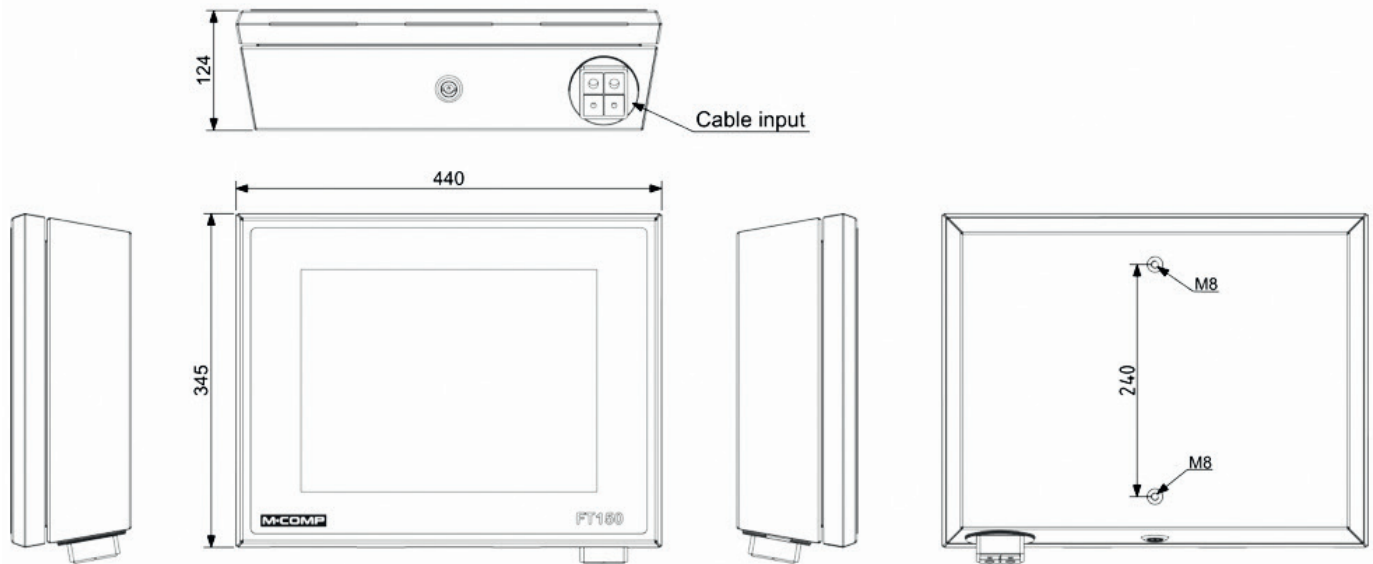
They are suitable for tasks in the food industry, such as data collection, product management, surveillance, expedition, etc.

It is possible to wall/pillar mount the units using tilting brackets, with either one or two axes tilt (sold separately).



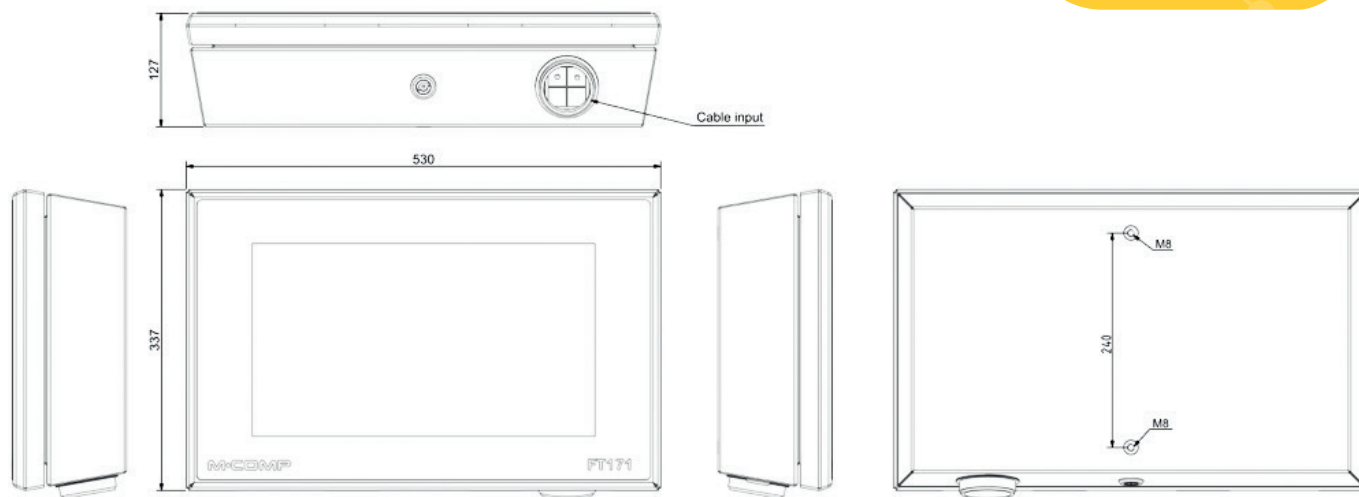
# FT 150

Mechanical Drawing

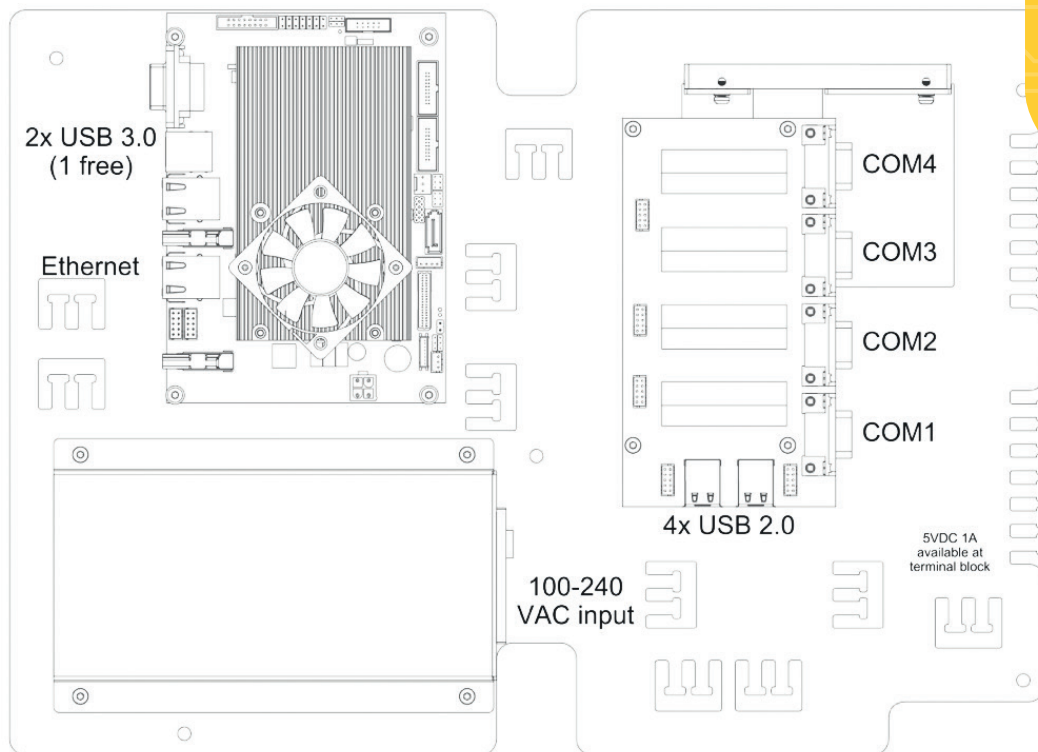


## FT 171

Mechanical Drawing



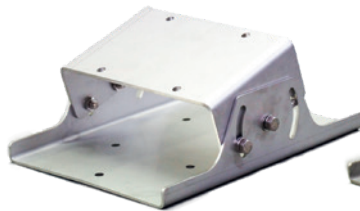
## Connections



## Tilting Brackets – Sold Separatly

### The 2 axis kit contains

- 1x Basic bracket
- 1x 2 axis middle bracket
- 1x 2 axis end bracket
- 10x M8x20 A4 bolt
- 10x washer
- 10x spring washer
- 8x locknut



1 axis



2 axis



### The 1 axis kit contains

- 1x Basic bracket
- 1x 1 axis end bracket
- 6x M8x20 A4 bolt
- 6x washer
- 6x spring washer
- 4x locknut

