



CONVEYORS MOVING YOUR BUSINESS

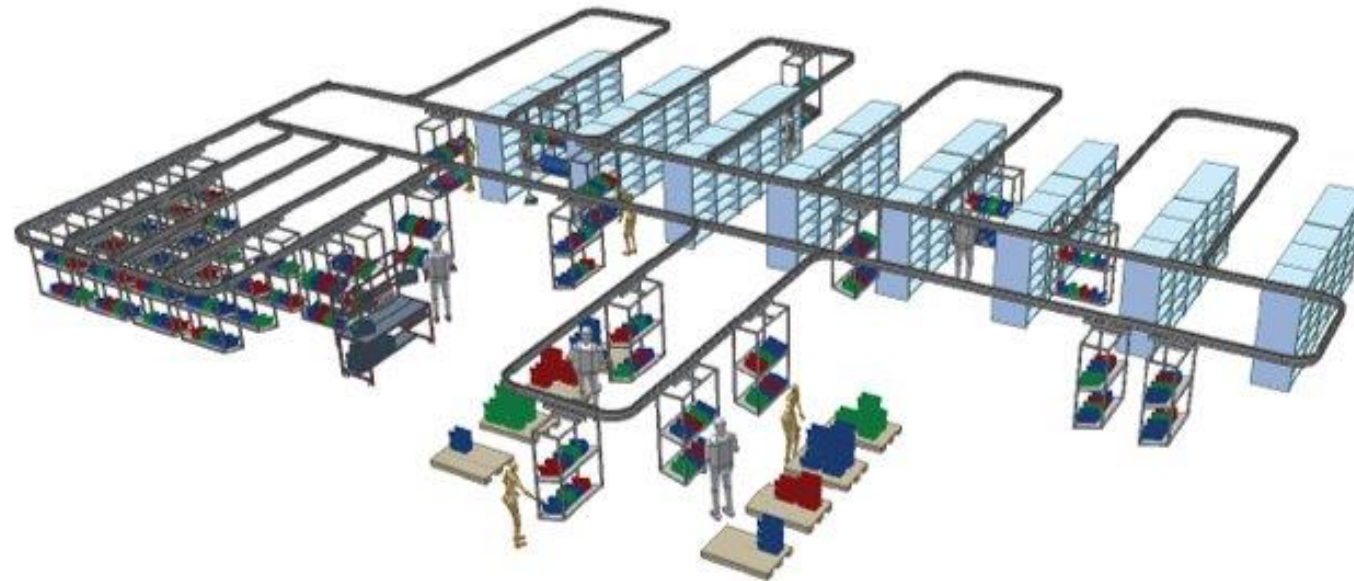
OCS 150 Overhead Conveyor

Part of
Axel Johnson
International

OCS 150 OVERHEAD CONVEYOR

Up to 150 kg/m

The OCS 150 overhead conveyor handles loads up to 150 kg/m. The basis of the system is built up of numerous driven and/or manual tracks. To these, switches, curves and buffer sections are connected for a maximum flow through production. The modular system is adapted to load weight and other parameters. The system enables quick and easy changes in further development of the production process.



OCS 150 OVERHEAD CONVEYOR

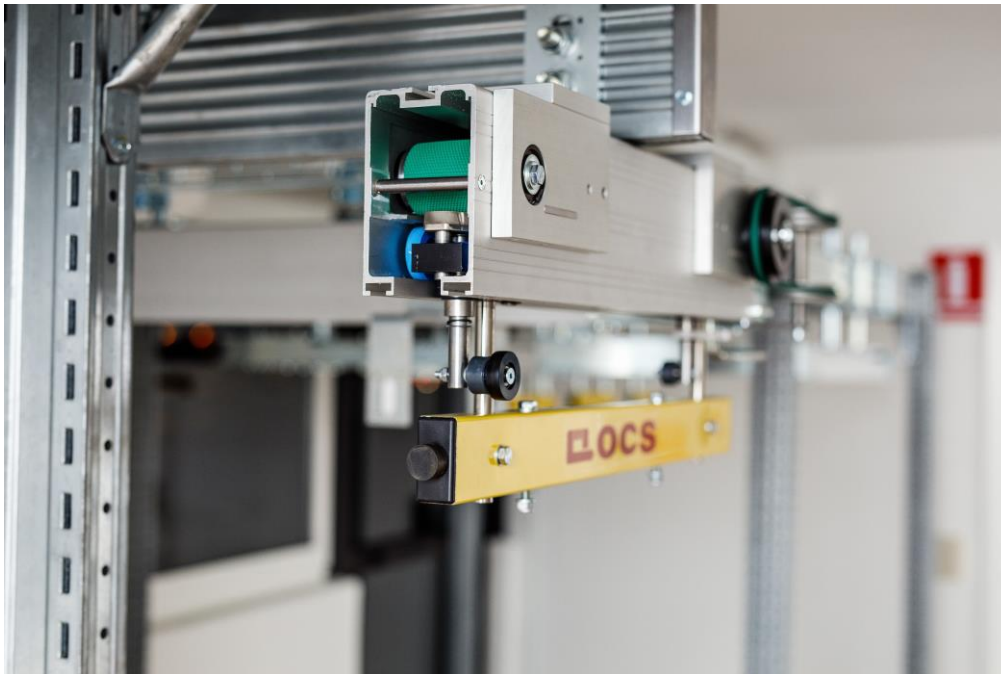
Conveyor tracks

The conveyor tracks are simple, reliable and almost completely silent. The drive mechanism consists of a friction belt driven by a worm gearmotor. The drive speed can be varied from 1 to 80m/min. Different sections of the system can run at different speeds, as well as backwards and forwards. Drive units can be equipped with frequency converters which provide a very smooth start and stop motion in individual positions.



Drive units

The drive units may have a soft start and stop movement and we always use energy efficient motors. Different sections of the system can be run at variable speeds as well as forwards and backwards.



OCS 150 OVERHEAD CONVEYOR

The trolley

The trolleys are equipped with a friction brace force which is pressed against the drive belt by means of spring force. In this way the power is transferred to the drive plate and the trolley is moved forward by friction. The use of single or double trailers means that different configurations allow different load weights. The hanging powered transport wagons are controlled by a PLC or database system that can be linked to existing production systems.



Product carriers

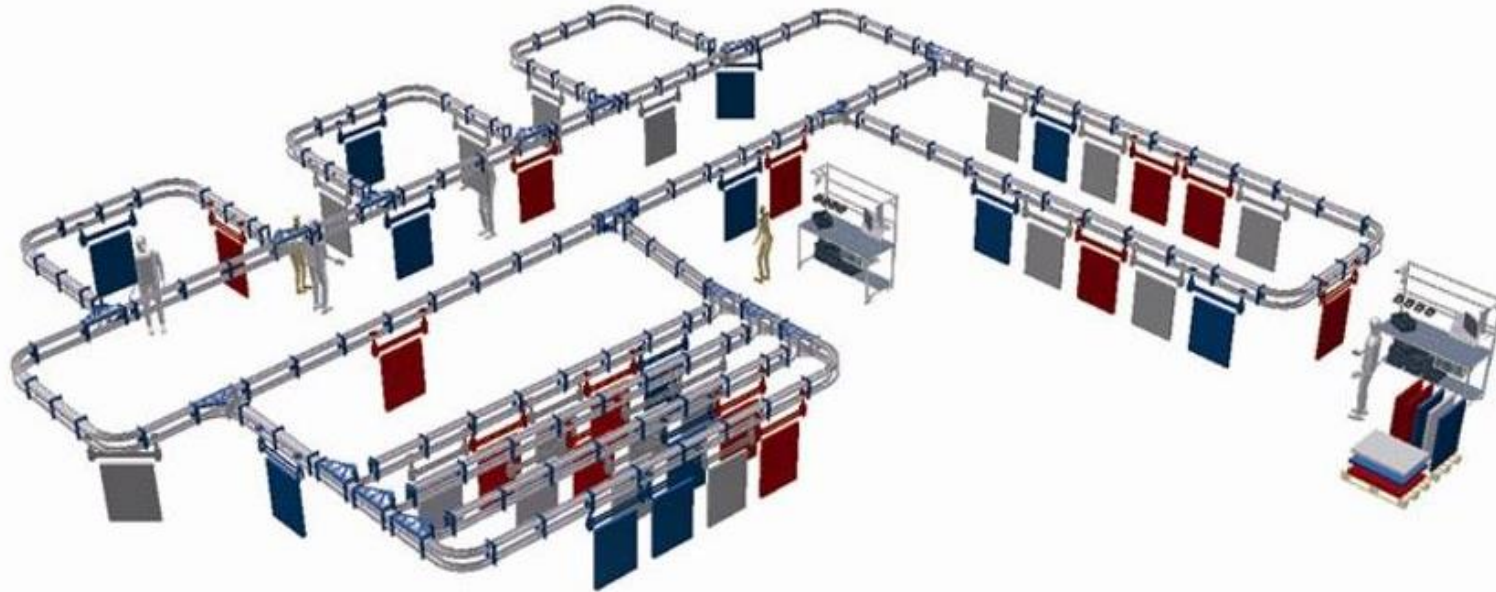
The product carrier is developed and adapted based on needs and requirements through careful analysis. Designed to handle many different parts. Adjustable work height and rotation can be integrated as required.



OCS 150 OVERHEAD CONVEYOR

Workstations

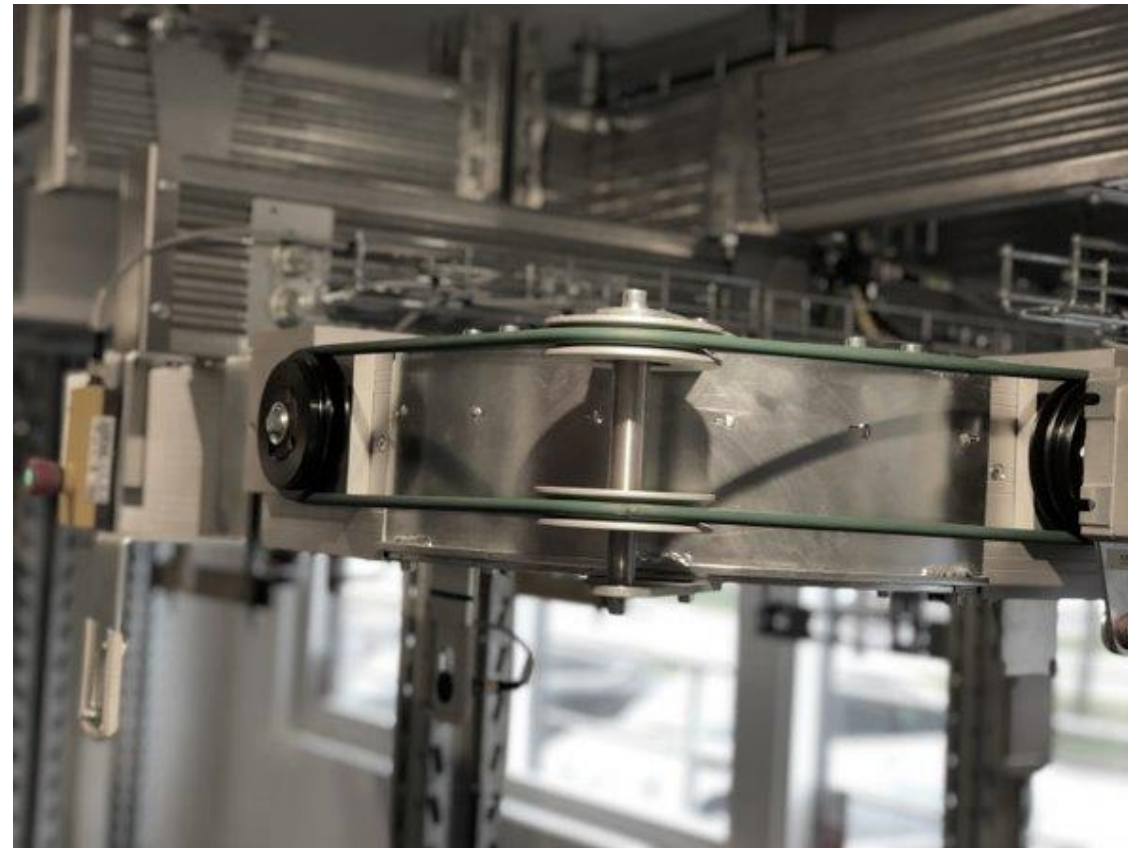
Workstations are designed according to the operator's work and position. The carrier's location is individually adjusted for the best possible ergonomics and productivity.



OCS 150 OVERHEAD CONVEYOR

Curves and switches

Curves in 45° or 90°. In order to switch off and on in the system, there are switches in 45° and 90° to the right and left.



OCS 150 OVERHEAD CONVEYOR

Vertical conveyors/elevations

Vertical conveyors / elevations are usually the best solution when the trolleys are to be transported vertically. The OCS compact vertical conveyor takes up minimal space and can load on several levels. The system can also transport through inclines/declines of up to 25° depending on load weight.



OCS 150 OVERHEAD CONVEYOR

Horizontal transfers

Transfers are used in compact buffers and flexible utilization in bidirectional tracks.



OCS 150 OVERHEAD CONVEYOR

Buffers

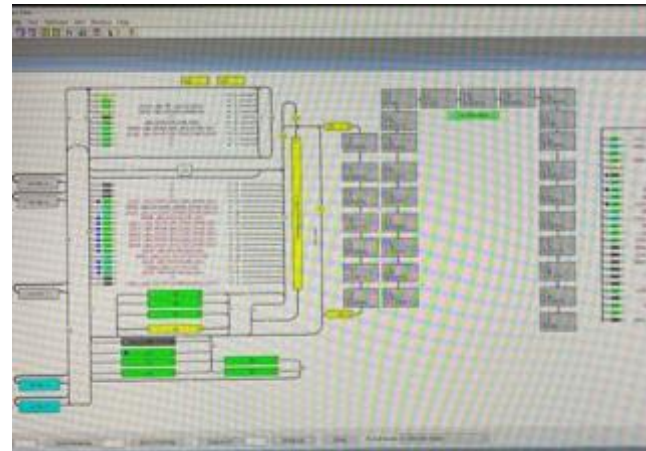
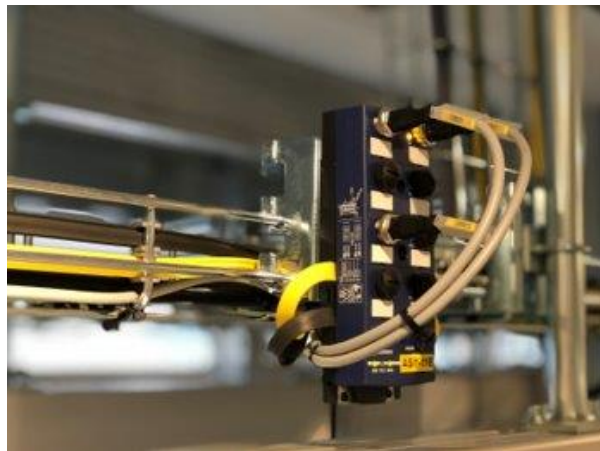
Production systems need buffer zones for even balance. The OCS 150 overhead conveyor with Power & Free buffers can store both on the driven track and at special buffer areas such as a robot station, loading and unloading.



OCS 150 OVERHEAD CONVEYOR

Control system

Material handling systems require a complete and advanced control system that controls flow and buffer amounts in production. The trolleys are equipped with RFID for identification and traceability via a PLC and/or computer-based control system.



O C S 1 5 0 O V E R H E A D C O N V E Y O R

Costs and features

OCS transport solutions offer more features than traditional Power & Free systems and similar features as in EMS electric Monorail systems, but at a lower cost. The technology is efficient and simple, because the system is very reliable and maintenance costs are low.

O V E R H E A D C O N V E Y O R

OCS 150

Clean, quiet and oil-free

Effective installation

Flexible and modular



Contact

OCS Overhead Conveyor System AB

Stormgatan 9

504 64 Borås, Sweden

Phone: + 46 33 23 34 40

Email: info@ocs.se

Web: www.ocs.se

Part of
Axel Johnson
International