

campcubes

Simple and flexible camp system
for field and emergency operations

Scanvogn A/S
Hovedvejen 50
Hirtshals 9850 - DK
www.campcubes.com
Mail: info@scanvogn.dk
Tel: +45 98 97 72 00

INTRO

Campcubes is a simple and flexible camp system designed for field and emergency operations. The simple assembly procedure and versatile design make it suitable for rapid deployment all over the world.

Units can be built with a variety of modules to provide facilities such as dining, sanitation, showering, decontamination and medical care.

Panels are made from lightweight materials and can be delivered in flat packs for logistical efficiency.



READY IN LESS THAN 1 HOUR

The lightweight materials and integrated lock mechanism enable a small group of people to build a unit in less than an hour with no need for heavy tools or machines.

Doors and windows come pre-installed in wall panels for faster assembly. The simple design ensures that anyone can set up a unit with little or no prior experience.



The lightweight material can easily be lifted by hand.



All panels are locked together using a standard hex key.

FEATURES

Floors come with adjustable mounting feet to ensure perfect alignment and to raise units above the ground. Profiles have grooves that fit together to eliminate any gaps and improve tightness and stability.

Roofs have rails on each side to support installation of additional accessories such as support rafters, rain protection between units, sun covers and solar panels.



Profiles have grooves providing tightness and stability.

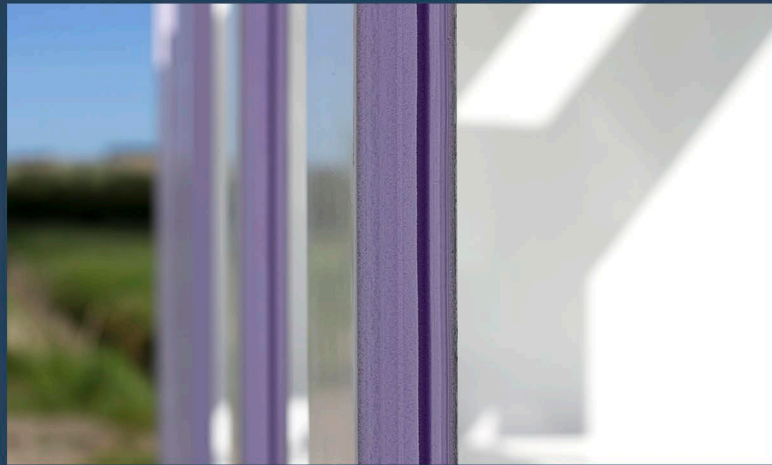


A sun cover can be installed directly onto each roof.

VERSATILITY

Campcubes are comprised of fiberglass and foam supported by aluminium or composite profiles. This ensures high thermal insulation and stability in all weather and terrain.

Units are shipped in flat packs for convenient transportation by sea and air. Once delivered they can be set up with no assistance from lifting gear due to the lightweight material.

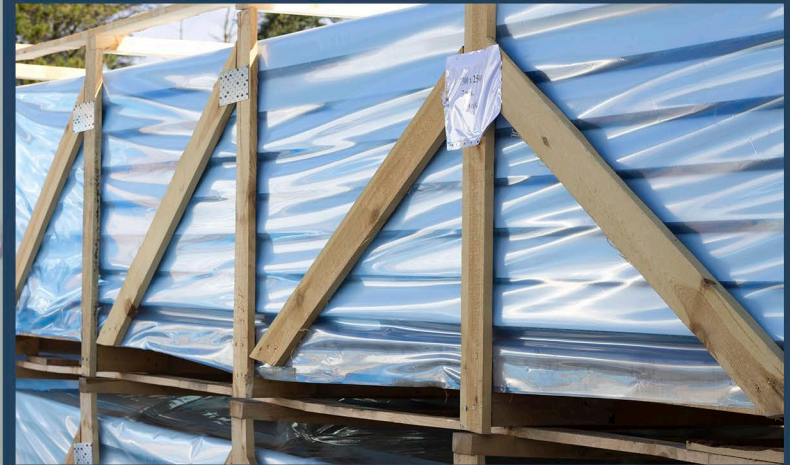


An isolating core provides thermal insulation in panels.

SUSTAINABILITY

The low weight and space requirements help reduce transportation cost and fuel usage while the insulated panels mean that less energy is required for heating and cooling.

In addition, toilet units can be equipped with vacuum pumps to conserve up to 90% water. Combined with solar panels a unit can work as a stand alone unit for smaller operations.



Flat packs offer convenient and efficient transportation.

HYGIENE

Except from a layer of plywood beneath the floor surface campcubes uses all non-organic materials with smooth surfaces to prevent dirt, smells and bacteria from manifesting.

The smooth surfaces also allow for effective cleaning with anti bacterial or high pressure water cleaning. For complete air tightness a removable sealant or strip can be applied.



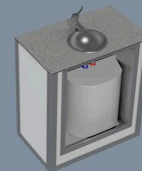
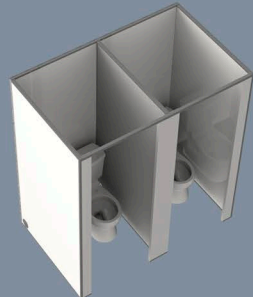
The plywood is sealed off beneath the floor protection.



FLEXIBILITY & SCALABILITY

Campcubes uses a modular system offering a high degree of flexibility and scalability. Units come in two sizes (T1 & T2) and can be joined into clusters to form larger rooms ideal for kitchens, offices, clinics, labs etc.

The system provides further flexibility, since it's relatively painless to reconfigure clusters. Replacing or repositioning panels can be done without affecting the whole structure.



INSTALLATIONS

Units can be equipped with a wide range of electrical installations as well as water supply, heating, air condition and sewage disposal.

SPECS

Dimensions & weight

T1 (small unit):	T2 (large unit):
2863 x 2261 mm	5715 x 2261 mm
335 kg	565 kg

Materials

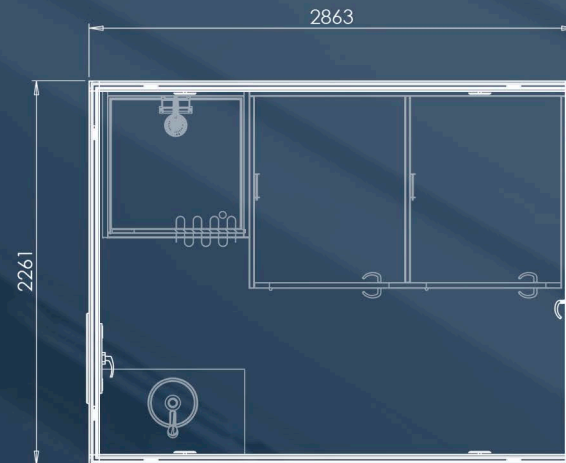
Fiberglass covering XPS foam
Aluminium/composite profiles
Plywood (beneath floor vinyl)

Temperature and structure

Span on surface: + 60° C to - 30 ° C
Pressure on floor: 300 kg per m²
Pressure on roof: 100 kg per m²

Assembly on site

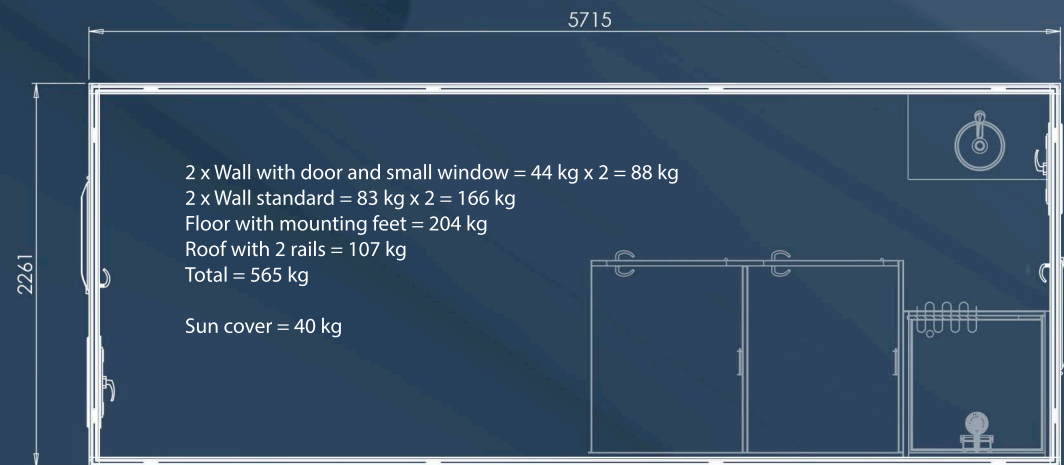
Single unit: 4 people in 30 - 60 min



Wall with window = 41 kg
Wall with door = 39 kg
2 x Wall standard = 42 kg x 2 = 84 kg
Floor with mounting feet = 108 kg
Roof with 2 rails = 63 kg
Total = 335 kg

Sun cover = 25 kg

Installation examples:
Shower module = 46 kg
Toilet module with 2 toilets = 104 kg
Hand basin with utility cabinet = 45 kg

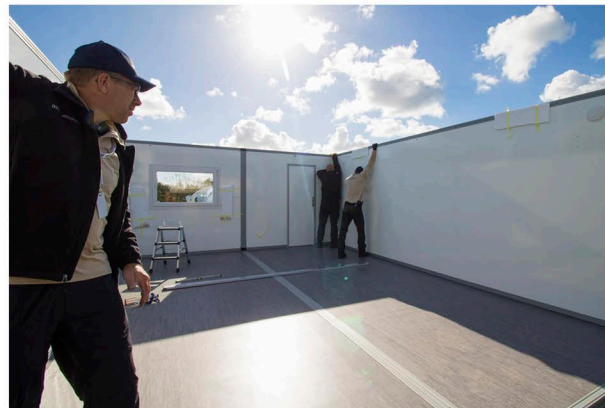


2 x Wall with door and small window = 44 kg x 2 = 88 kg
2 x Wall standard = 83 kg x 2 = 166 kg
Floor with mounting feet = 204 kg
Roof with 2 rails = 107 kg
Total = 565 kg

Sun cover = 40 kg

CASE STUDY

Danish Emergency Management Agency



The image features a low-angle shot of a modern, white mobile unit with large windows, set against a clear blue sky. In the top left corner, there is a black square containing the 'scanvogn' logo in white lowercase letters, with a red horizontal bar underneath it.

scanvogn

SAFETY AND COMFORT WITH BETTER MOBILE SOLUTIONS

Scanvogn is Scandinavia's leading manufacturer of mobile solutions for construction and events. Our products include a variety of trailers for accommodation, dining, sanitation, bathing, decontamination and refrigeration as well as custom solutions for organizations operating in remote areas lacking secure and sanitary facilities.

Our products are known for their quality and comfort and are built using lightweight non-organic materials offering a high degree of insulation, hygiene and durability. They are utilized in numerous parts of the world ranging from the hottest to the coldest climates and have been proven to work under extreme usage. For instance at festivals where a single toilet unit handles over 700 visits per hour.

Scanvogn is based in northern Denmark and employs over 100 people in its 9000 m² factory. We manufacture most parts in-house which enables us to deliver highly customized orders for clients with specific requirements, while providing exceptional service and repair. We understand our clients' tasks and challenges and can therefore cater to their needs throughout the entire process.

With over 20 years of leadership and innovation Scenvogn has the skills and experience necessary to turn our clients' ideas into functional solutions and produce them on a large scale.

Scanvogn A/S, Hovedvejen 50, 9850 Hirtshals, Denmark
+45 98 97 72 00 info@scanvogn.dk www.scanvogn.dk