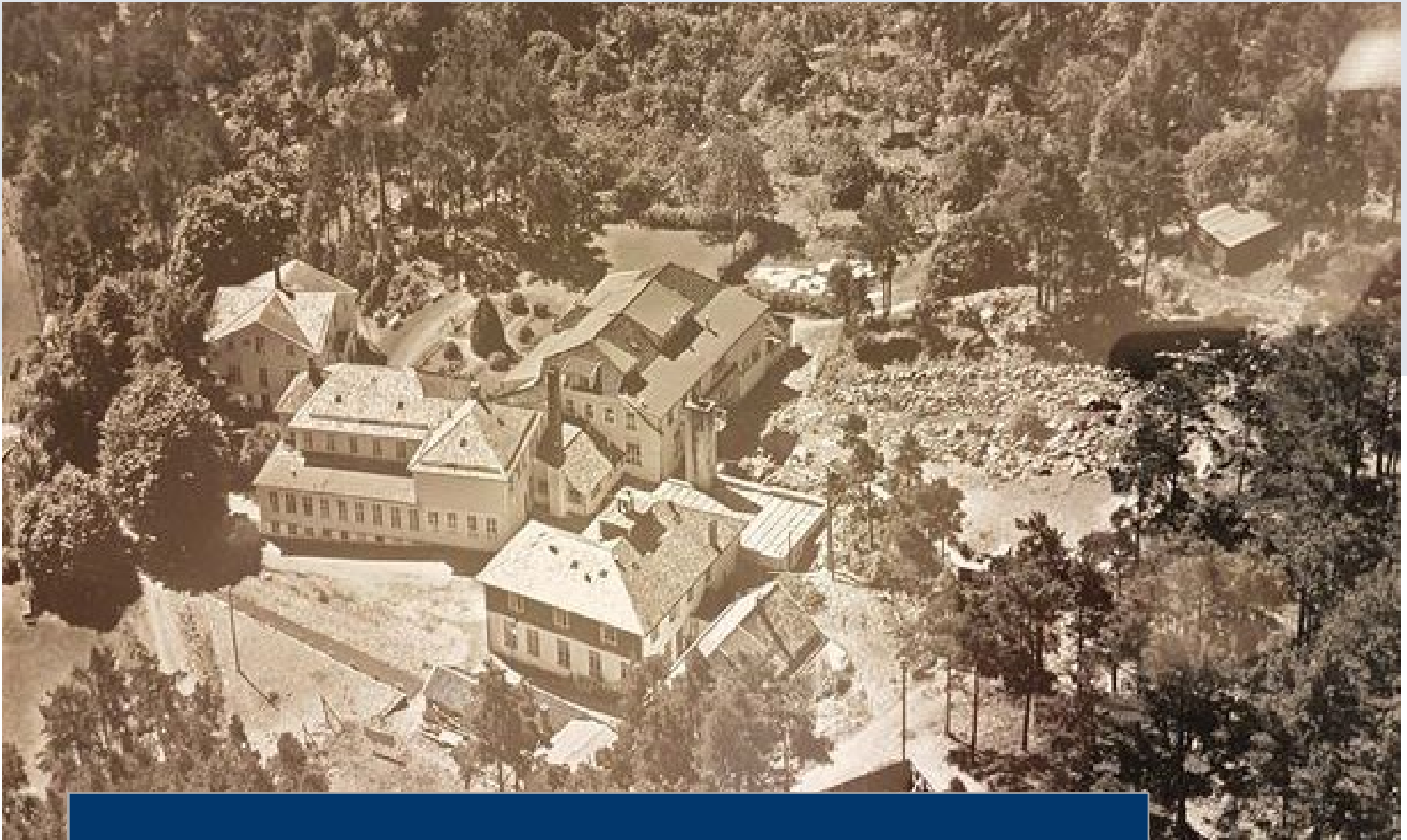




How to solve the dilemma
of running a modern hospital
in a protected building from 1908

...the story of the door to the morgue



Stord Sjukehus is located on the southern west coast of Norway. It's original buildings date back to the early 1900 and over the years, it has been expanded and updated to meet modern standards.



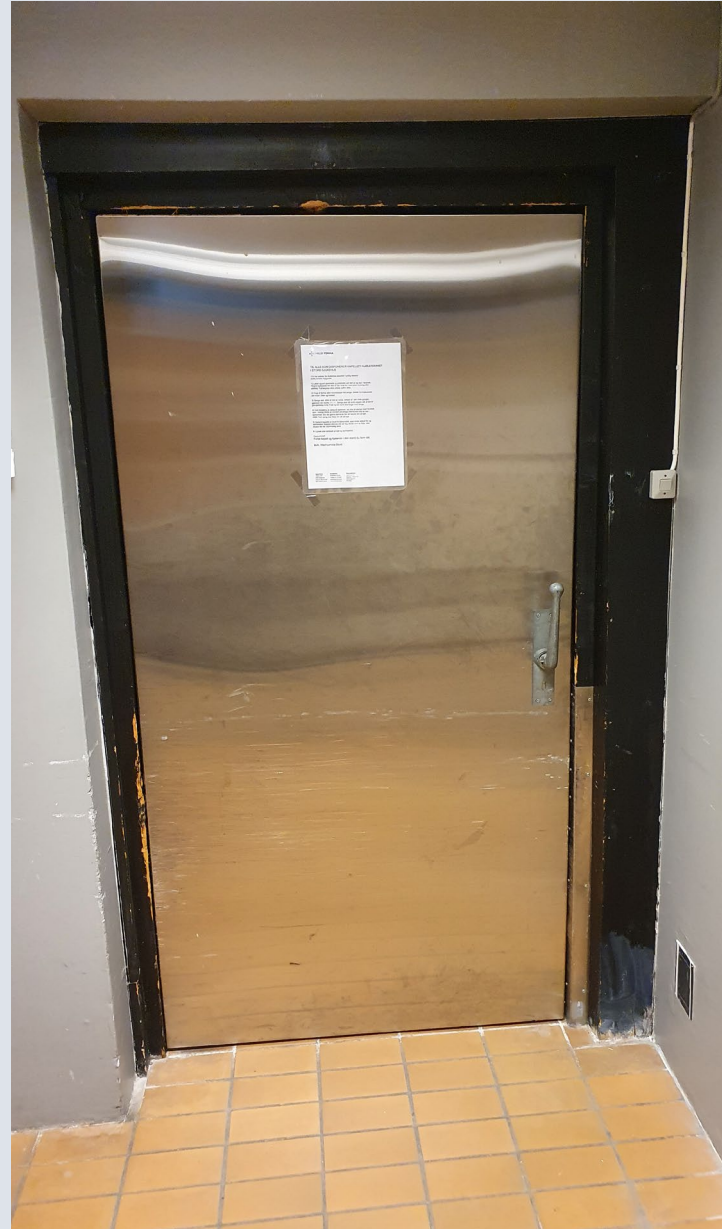
One of the things that have changed over the last 114 years is the bed size:



Which
brings us
to our story...

This is the door
to the morgue.

It has become
too narrow for the
modern stretchers



... and it is generally in a poor condition



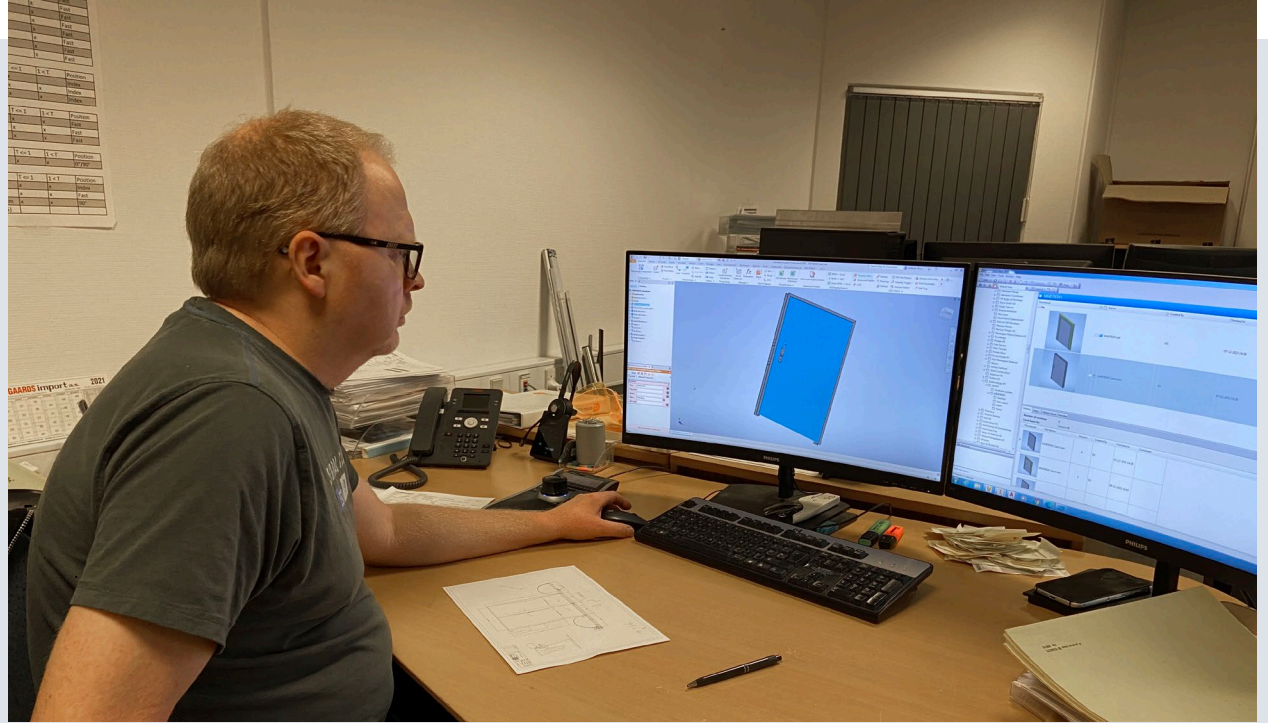
The challenge:
Create a new door
identical with the original door
in order to respect the rules of
building protection.

Luckily, DAN-doors was up for the challenge

See how we did it in the next slides



Step 1:



Create accurate technical drawings for production

- New dimensions
- Same look
- Same doorknob + lock



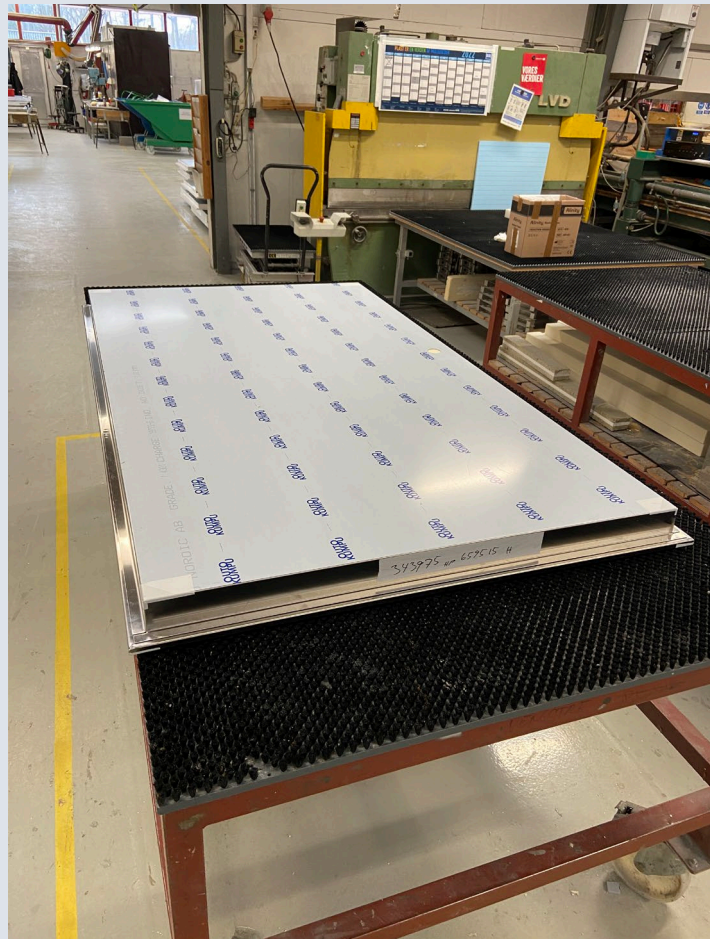
Step 2:



Prepare the steel components.



Step 3:



Produce the door.



Step 4:



Mount the original doorknob
- Renovated and with new varnish



Step 5:



Install the new door
with the authentic details



Before

After



Before

After





Do you want to know more?



DAN-doors

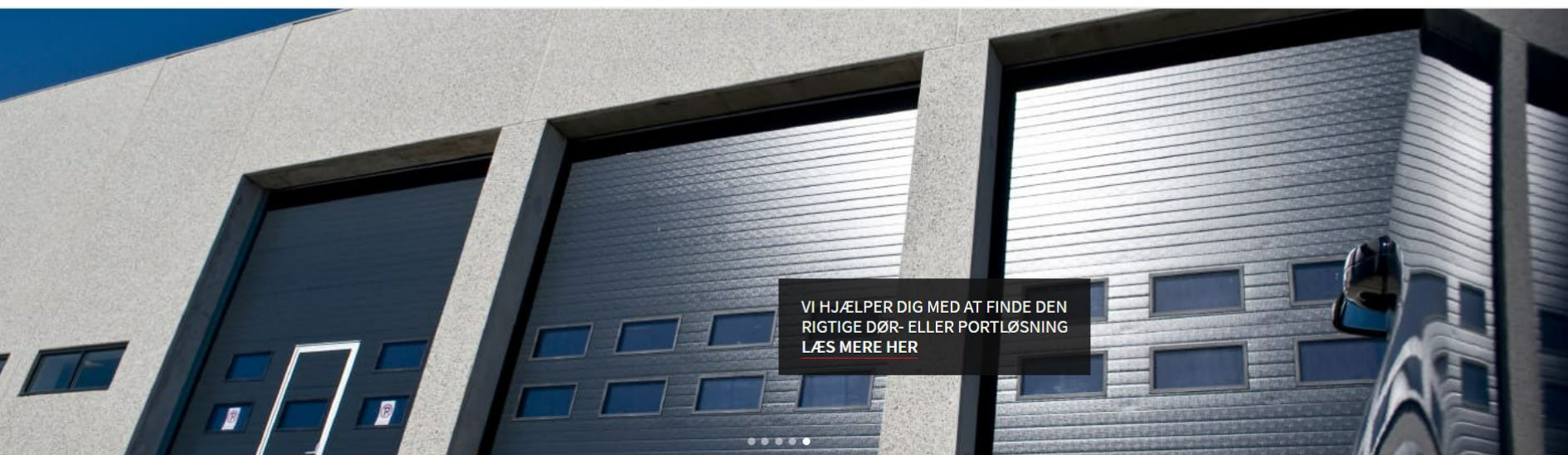
INTELLIGENT SOLUTIONS



DAN-doors
INTELLIGENT SOLUTIONS



SHOP MENU



VI HJÆLPER DIG MED AT FINDE DEN
RIGTIGE DØR- ELLER PORTLØSNING
[LÆS MERE HER](#)

DØRPRODUCENT INDEN FOR INDUSTRIPORTE

Vi fremstiller kundespecifikke døre og industriporte i rustfrit stål efter alle gældende krav og normer. Med stærke kompetencer og høje kvalitetskrav udvikler og producerer vi kvalitetsløsninger indenfor køle-, fryse-, brand- og industridøre.

www.dan-doors.dk