



MIRA ICE

VITRIFIED BONDED WORM GRINDING
WHEELS FOR CONTINUOUS GENERATING
GRINDING OF GEARS

MIRA ICE

The MIRA ICE product line has been specially developed for the continuous generating grinding of gears. A new kind of development approach enables unprecedented results to be achieved in terms of economic efficiency and cool grinding.

+ Shorter grinding times:

Due to the significantly higher stock removal rates and fewer rough grinding passes, grinding times can be cut by up to 50%.

+ Longer tool life: Due to reduced shift travel and increased dressing cycles, the tool life of each wheel can be lengthened by up to 100%.

+ Highest process stability: The best quality standards and a completely homogeneous grinding wheel structure ensures consistent tooth profile quality of the highest standard.



Application

Continuous generating grinding of gears



+ High-precision pre-profiling:

Pre-profiling for module sizes 1 – 12 with one or more starts in maximum quality. Pre-profiling for high-quality and special gears is tailored specifically to customer requirements.

Example application

Worm grinding wheel measuring 280 x 160 x 115 mm / 3-starts
Gearing with size 4 module / No. of teeth 34 / Tooth width 22 mm /
Involute toothing 20°

Grinding time reduced by 50%



Tool life increased by 70%

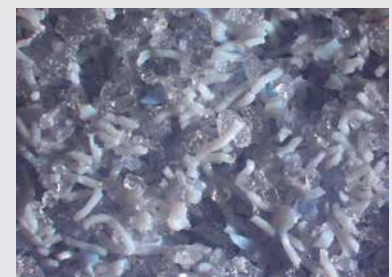


New approach to development

New grain qualities and geometry

New high-strength bond system

Increased porosity of grinding wheel



MIRA ICE grinding wheel structure