



VALVES

# Relief Valves

BiS offer a comprehensive range of stainless steel safety relief and relief valves for use on a wide range of media, from low pressure valves that vent to atmosphere, to high pressure (1379 bar, 20,000 psi) piped return valves. Typically, low pressure valves offer a pop-open characteristic, while higher pressure valves offer proportional or metering style operation.

BiS relief valves are CE marked to denote approval as Category IV safety accessories under the 97/23/EC Pressure Equipment Directive.

Many options are available, including cartridge and manifold mounted versions, and many valves are available in exotic materials, including monel, inconel, hastelloy and titanium.



## Contacts

### BiS VALVES LTD

Unit 17 - 23, Kingfisher Park, West Moors, Wimborne, Dorset, BH21 6US, UK

**Tel No:** +44 (0)1202 896322

**Email:** salesadmin@bisvalves.co.uk

**Fax No:** +44 (0)1202 896718

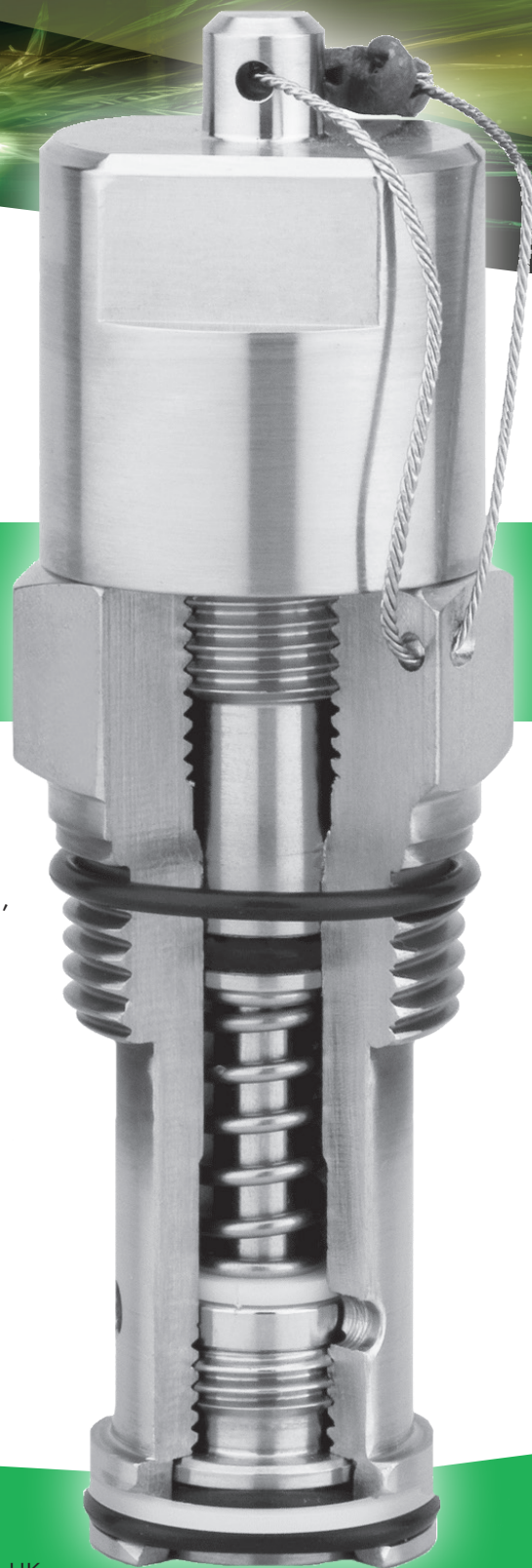
**Web:** www.bisvalves.co.uk

## Global Distributors

See [www.bisvalves.co.uk](http://www.bisvalves.co.uk) for contact details



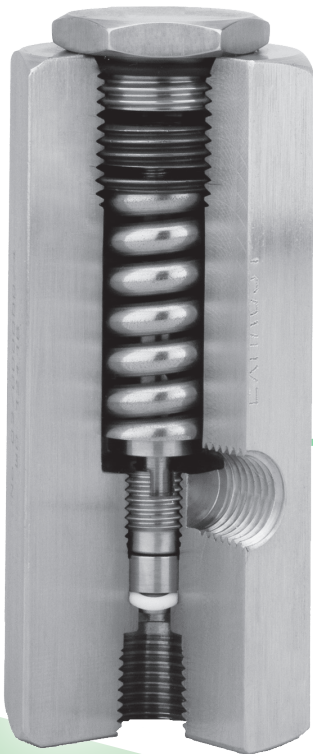
VALVES



	Connection	Max Pressure	Media	Valve Type
Safety Relief Valves	1/4"	40 bar (580 psi)	Liquids & Gases	<b>S25 &amp; TS25</b>
	3/8"	40 bar (580 psi)	Liquids & Gases	<b>S37 &amp; TS37</b>
	1/2"	40 bar (580 psi)	Liquids & Gases	<b>S50 &amp; TS50</b>
	3/4"	40 bar (580 psi)	Liquids & Gases	<b>S75 &amp; TS75</b>
	1"	28 bar (406 psi)	Liquids & Gases	<b>S100 &amp; TS100</b>
Relief Valves	1/4"	1,379 bar (20,000 psi)	Liquids	<b>RL25</b>
	1/4"	414 bar (6,000 psi)	Liquids & Gases	<b>RL25-G</b>
	3/8"	1,379 bar (20,000 psi)	Liquids	<b>RL37</b>
	3/8"	414 bar (6,000 psi)	Liquids & Gases	<b>RL37-G</b>
	1/2"	1,034 bar (15,000 psi)	Liquids	<b>RL50</b>
	1/2"	414 bar (6,000 psi)	Liquids & Gases	<b>RL50-G</b>
	3/4"	1,034 bar (15,000 psi)	Liquids	<b>RL75</b>
	3/4"	414 bar (6,000 psi)	Liquids & Gases	<b>RL75-G</b>
	1"	207 bar (3,000 psi)	Liquids	<b>RL100</b>
1"	207 bar (3,000 psi)	Liquids & Gases	<b>RL100-G</b>	

# Relief Valves

## Safety Relief Valves



- ✓ Set pressures from 0.7 bar to 40 bar
- ✓ 1/4" to 1" ports, typically NPT or BSP
- ✓ Vent to atmosphere and threaded exhaust designs
- ✓ Pop open characteristic for maximum discharge capacity
- ✓ Elastomeric sealing technology for virtually zero leakage at 90% of set pressure
- ✓ Suitable for liquid and gas applications
- ✓ Various seal options available



## Relief Valves

- ✓ Set pressures from 27 bar to 1379 bar
- ✓ 1/4" to 1" ports available
- ✓ NPT, BSP and medium pressure port options
- ✓ Subsea variants available
- ✓ Liquid and gas duty variants
- ✓ Various seal options
- ✓ Cartridge versions available