

# PROMOTION

# OFFER

2026



# FENIX 200DCLP

## ROCKWELL HARDNESS TESTERS

SEMI AUTOMATIC | LOAD RANGE 1kgf - 187.5kgf

ROCKWELL & BRINELL FORCE RANGE

### FEATURES

- Rockwell & Brinell test forces
- Maintenance free, electronic force application system
- Load cell, closed loop, force feedback system
- Load range 10kgf - 187,5kgf

Rockwell scales : A | B | C | D | E | F | G | H | K | L | M | P | R | S | V

Brinell scales : HBW1/10 | HBW1/30  
HBW2.5/31.25 | HBW2.5/62.5 | HBW2.5/187.5  
HBW5/25 | HBW5/62.5 | HBW5/125 | HBW5/187.5  
HBW10/100

- 260mm working height
- I-TOUCH™ software system, advanced tester control,
- Power LED next to indenter
- USB access on front and back panel
- Large digital, full color, touchscreen indicating test scale, dwell time, limits, test results, and conversion to other hardness scales.
- Extra keypad for dirty environments.
- USB connection
- Start, stop and menu selection buttons
- ABS protection cover of the machine base

### LANGUAGES

English/German/French and Japanese

## SOFTWARE

- I-TOUCH™ Intuitive tester and process control.
- Conversion to other hardness scales.
- USB 2 output.
- Shape correction for convex, concave, or spherical specimens
- Go & No go settings.

### INCLUDES

- 1x Rockwell C ISO/ASTM certified indenter
- UPI traceable certified test block +/-HRC60
- UPI traceable certified test block +/-HRC40
- Spindle protection cover
- 60mm flat Anvil
- 63mm V-anvil
- ABS protection cover of the machine base
- Working height 260mm
- Throat depth 150mm

### OPTIONAL

- Various anvils, see catalogue.
- ISO/IEC 17025 compliant. Direct & Indirect calibration certificate, DIN EN ISO ASTM Rockwell common scales (DID17025CERT|R) (€ 490,-)

Adjustable clamp included



15 YEARS  
GLOBAL  
WARRANTY

UPON REGISTRATION

CONDITIONS APPLY

PROMOTIONAL PRICE

€ 5.800,-

Excluding VAT, shipping costs & installation charges



# FENIX 300RSP

## ROCKWELL HARDNESS TESTERS

SEMI AUTOMATIC | LOAD RANGE 1kgf - 250kgf

ROCKWELL & BRINELL FORCE RANGE

### FEATURES

- Rockwell & Brinell (Optional) test forces
- Maintenance free, electronic force application system
- Load cell, closed loop, force feedback system
- Load range 1kgf - 250kgf

Rockwell scales : A | B | C | D | E | F | G | H | K | L | M | P | R | S | V

Brinell scales : HBW1/2.5 | HBW1/5 | HBW1/10 | HBW1/30  
(Optional) HBW2.5/6.25 | HBW2.5/7.8125 | HBW2.5/15.625 | HBW2.5/31.25 | HBW2.5/62.5 | HBW2.5/187.5  
HBW5/25 | HBW5/31.25 | HBW5/62.5 | HBW5/125 | HBW5/250  
HBW10/100 | HBW10/125 | HBW10/250

- 260mm working height
- I-TOUCH™ software system, advanced tester control
- Industrial 6.5" touchscreen, full color, touchscreen indicating test scale, dwell time, limits, test results, and conversion to other hardness scales.
- Load Cell, closed loop force control system
- Direct depth measurement on indenter shaft
- Clamping nose to fix workpieces & indenter protection
- Extra keypad for dirty environments.
- USB access on front and back panel
- Massive full steel C-frame for best GR & R results
- ABS protection cover of the machine base

### LANGUAGES

English/German/French and Japanese

## SOFTWARE

- I-TOUCH™ Intuitive tester and process control.
- Conversion to other hardness scales.
- USB 2 output.
- Shape correction for convex, concave, or spherical specimens
- Go & No go settings.

### INCLUDES

- 1x Flat Anvil 80mm
- 1x V-Anvil 63mm
- 1x Rockwell C ISO/ASTM certified indenter

### OPTIONAL

- Various anvils, see catalogue.
- ISO/IEC 17025 compliant. Direct & Indirect calibration certificate, DIN EN ISO ASTM Rockwell common scales (DID17025CERT|R) (€ 490,-)

Adjustable clamp included



15 YEARS  
GLOBAL  
WARRANTY

UPON REGISTRATION

CONDITIONS APPLY

PROMOTIONAL PRICE

€ 8.950,-

Excluding VAT, shipping costs & installation charges



# GEMINI 6100G2

ROCKWELL HARDNESS TESTERS

FULLY AUTOMATIC | SMALL VERSION (150mm) **1kgf - 250kgf**  
TALL VERSION (300mm) **1kgf - 250kgf**

WITH IRIS™ INDENTER RECOGNITION SYSTEM

## FEATURES

- Load cell, force feedback, closed loop system.
- **All scales Rockwell, Rockwell Superficial, Brinell, HVD, HBD, Plastics & Carbon (ALLSCL).**
- IRIS™ intelligent indenter system.
- Clamping attachment with auto-start function.
- Cross laser positioning system.
- Multi color LED machine status indicator.
- Top-class replaceable body parts, ABS covers.
- Workpiece height: (S)150 or (T)300mm.
- Fast up/down & start buttons on front panel.

## LANGUAGES

All languages

## INCLUDES

- 1x Rockwell C ISO/ASTM certified indenter, IRIS™, (RKWSCL).
- 6100G2 SRS, integrated test table 160 x 160mm (SA-08-0030).
- 6100G2 TRS, integrated test table 300 x 250mm (SA-08-0031).
- Workpiece illumination LED (SA-05-0074).
- Workpiece clamp with autostart function (SA-02-0148).

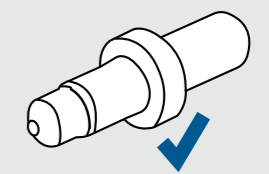
**15 YEARS**  
GLOBAL  
**WARRANTY**  
UPON REGISTRATION  
CONDITIONS APPLY

## SOFTWARE

- I-TOUCH™ Intuitive tester and process control.
- Conversion to other hardness scales.
- USB 2 output.
- Shape correction for convex, concave, or spherical specimens.
- Go & No go settings.

## OPTIONAL

- Various anvils, see catalogue.
- ISO/IEC 17025 compliant. Direct & Indirect calibration certificate, DIN EN ISO ASTM Rockwell common scales (DID17025CERT|R) (€ 490,-)



INDENTER RECOGNITION  
IDENTIFICATION SYSTEM

PROMOTIONAL PRICE 6100G2 SRS

€ **11.950,-**

PROMOTIONAL PRICE 6100G2 TRS

€ **13.950,-**

Excluding VAT, shipping costs & installation charges



6100G2 SRS

6100G2 TRS

# GEMINI 6200G2

ROCKWELL HARDNESS TESTERS

FULLY AUTOMATIC | SMALL VERSION (150mm) **1kgf - 250kgf**  
TALL VERSION (300mm) **1kgf - 250kgf**

WITH IRIS™ INDENTER RECOGNITION SYSTEM

## FEATURES

- Load cell, force feedback, closed loop system.
- **All scales Rockwell, Rockwell Superficial, Brinell, HVD, HBD, Plastics & Carbon (ALLSCL).**
- IRIS™ intelligent indenter system.
- Clamping attachment with auto-start function.
- Cross laser positioning system.
- Multi color LED machine status indicator.
- Top-class replaceable body parts, ABS covers.
- Workpiece height: (S)150 or (T)300mm.
- Fast up/down & start buttons on front panel.
- All languages

## INCLUDED WITH 6200G2 SRS

- 1x Rockwell C ISO/ASTM certified indenter, IRIS™ (UPI/6005S).
- Integrated anvil test table 160 x 160mm (SA-08-0030).
- Workpiece illumination LED (SA-05-0074).
- Workpiece clamp with autostart function (SA-02-0148).
- **Integrated high performance Industrial PC i7**
- **Keyboard and mouse.**

## INCLUDED WITH 6200G2 TRS

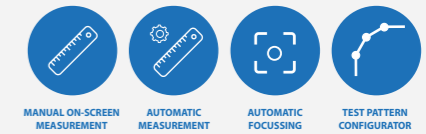
- Fully automatic
- 1x Rockwell C ISO/ASTM certified indenter, IRIS™ (UPI/6005S).
- **Motorized CNC X-Y stage, surface 237x188mm, travel 100x100mm (UN-XY571212TT)**
- Workpiece illumination LED (SA-05-0074).
- Workpiece clamp with autostart function (SA-02-0148).
- 3-axis pattern configurator for motorized stages (UN-TESTPAT01)
- **Integrated high performance Industrial PC i7**
- **Keyboard and mouse.**

**15 YEARS**  
GLOBAL  
**WARRANTY**  
UPON REGISTRATION

CONDITIONS APPLY

## SOFTWARE

- **IMPRESSIONS™** v4 Software package.
- Conversion to other hardness scales.
- USB 2 output.
- Shape correction for convex, concave, or spherical specimens
- Go & No go settings.



## OPTIONAL

- Various anvils, see catalogue.
- ISO/IEC 17025 compliant. Direct & Indirect calibration certificate, DIN EN ISO ASTM Rockwell common scales (DID17025CERT|R) (€ 490,-).



6200G2 SRS

6200G2 TRS

PROMOTIONAL PRICE 6200G2 SRS

€ **13.950,-**

PROMOTIONAL PRICE 6200G2 TRS

€ **17.950,-**

Excluding VAT, shipping costs & installation charges



# HAWK 250RSP

ROCKWELL HARDNESS TESTERS

FULLY AUTOMATIC | LOAD RANGE 1kgf - 187.5kgf

NOSE TYPE HARDNESS TESTER

## FEATURES

- Maintenance free electronic test force application
- Load cell, closed loop, force feedback system
- Test force measurement on indenter position
- Direct depth measurement system (unique)
- Load range 1kgf – 187.5kgf

**Rockwell:** A | B | C | D | E | F | G | H | K | L | M | P  
**Superficial Rockwell:** 15N | 30N | 45N | 15T | 30T | 45T | 15W | 30W  
45W | 15X | 30X | 45X

**Brinell (optional):** HBW1/1 | HBW1/1.25 | HBW1/2.5 | HBW1/5  
HBW1/10 | HBW1/30  
HBW2.5/6.25 | HBW2.5/7.8125 | HBW2.5/15.625  
HBW2.5/31.25 | HBW2.5/62.5 | HBW2.5/187.5

**Vickers (optional):** HV1 | HV2 | HV2.5 | HV3 | HV4 | HV5 | HV10 | HV20  
HV25 | HV30 | HV40 | HV50 | HV100 | HV120 | HV150

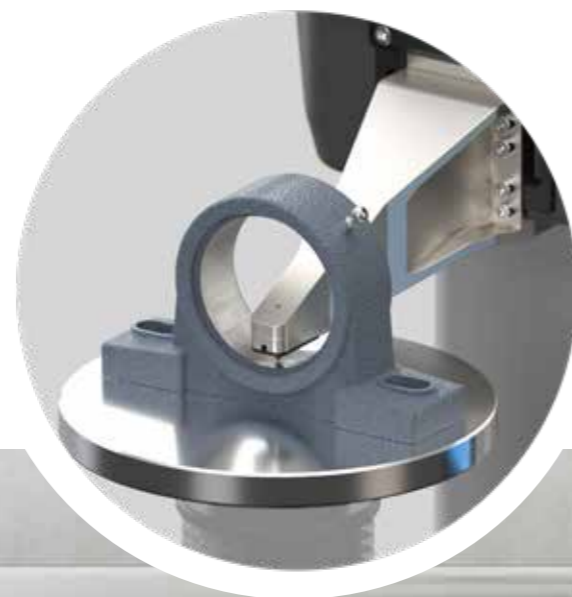
- 150mm protruding nose, 200mm throat depth
- 250mm working height
- I-TOUCH™ software system, advanced tester control
- Power led next to indenter, integrated in nose
- USB access on front and back panel
- Optional workpiece clamp and pre-shaped clamp inserts

## LANGUAGES

All languages

## INCLUDES

- 1x Rockwell ISO/ASTM traceable certified diamond Indenter (UPI/6003)
- Flat Anvil 60mm
- HRC 60 Reference Block

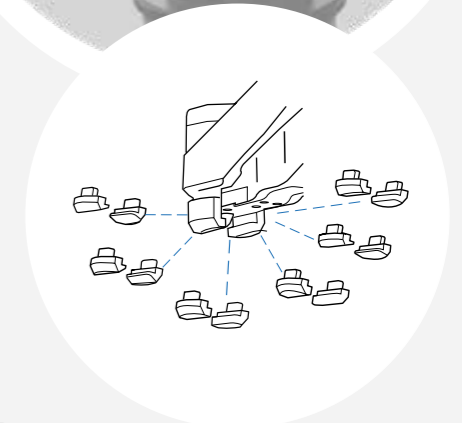
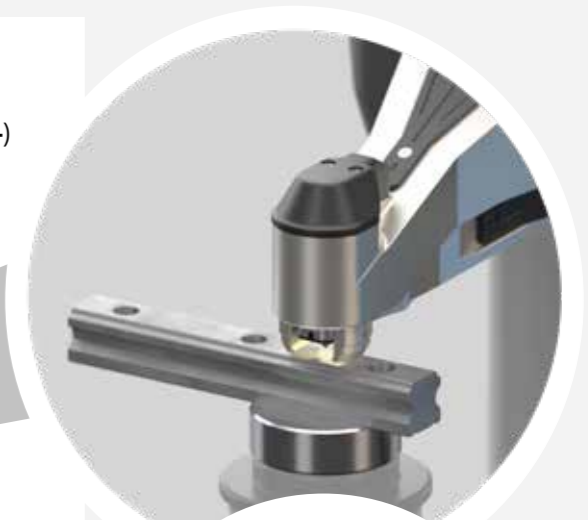


## SOFTWARE

- I-TOUCH™ Intuitive tester and process control.
- Conversion to other hardness scales.
- USB 2 output.
- Shape correction for convex, concave, or spherical specimens
- Go & No go settings.

## OPTIONAL

- Clamping nose with a set of flat pieces (SA-02-0110) (€ 1.620,-)
- Various anvils, see catalogue.
- ISO/IEC 17025 compliant. Direct & Indirect calibration certificate, DIN EN ISO ASTM Rockwell common scales (DID17025CERT|R) (€ 490,-)



A set of 7 differently shaped (convex, concave, V-grooved or flat) clamp inserts allow to assure perfect grip on the sample.

PROMOTIONAL PRICE 250RS

€ 8.950,-

PROMOTIONAL PRICE 400RS

€ 10.900,-

Excluding VAT, shipping costs & installation charges



15 YEARS  
GLOBAL  
WARRANTY  
UPON REGISTRATION  
CONDITIONS APPLY

# REFERENCE BLOCKS

## REFERENCE BLOCKS / CALIBRATION SETS



### TRACEABILITY

Hardness calibration blocks are calibrated & DUAL-certified traceable to National/International standards according to ISO 6506, ISO 6507, ISO 6508, ISO 4545, ASTM E18, ASTM E92 and ASTM E10.

### ROCKWELL 25HRC | 45HRC | 63HRC

Set of 3 blocks for HRC scale calibration  
Packed in strong ABS container

- Blocks packed as set
- Soft interior keeps blocks free from damage
- Additional space to Store indenter

PRICE:  
€ **289,-**

Excludes VAT & shipping

### VICKERS 200HV | 400HV | 700HV

Set of 3 blocks for Vickers scale calibration  
Packed in strong ABS container

- Blocks packed as set
- Soft interior keeps blocks free from damage
- Additional space to Store indenter

All HV force scales  
PRICE:  
€ **747,-**

Excludes VAT & shipping

### MICRO VICKERS 200HV | 400HV | 700HV

Set of 3 blocks for (Micro) Vickers scale calibration  
Packed in strong ABS container

- Blocks packed as set
- Soft interior keeps blocks free from damage
- Additional space to Store indenter

All HV force scales  
PRICE:  
€ **775,-**

Excludes VAT & shipping

ISO/IEC 17025 (ISO/ASTM)  
CERTIFIED REFERENCE TOOLS  
FOR HARDNESS TESTERS



## INDIVIDUAL REFERENCE BLOCKS

### REFERENCE BLOCK

### MICRO-VICKERS 25 MM



Calibration blocks are calibrated & DUAL-certified traceable to National/International standards according to ISO 6507/3 & ASTM-E92 A4.

All available scales

### REFERENCE BLOCK

### KNOOP 25 MM



Calibration blocks are calibrated & DUAL-certified traceable to National/International standards according to ISO 4545/3 & ASTM-E92 A4.

All available scales

### REFERENCE BLOCK

### VICKERS 60 MM



Calibration blocks are calibrated & DUAL-certified traceable to National/International standards according to 6507/3 & ASTM-E92 A4.

All available scales

### REFERENCE BLOCK

### ROCKWELL 60 MM



Calibration blocks are calibrated & DUAL-certified traceable to National/International standards according to ISO 6508/3 & ASTM-E18 A4.

All available scales

### REFERENCE BLOCK

### BRINELL 90 MM

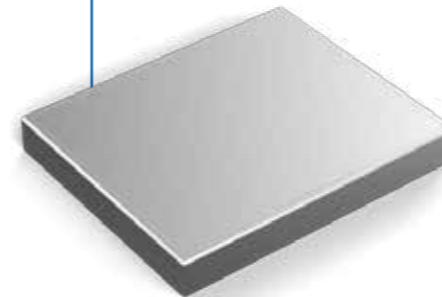


Calibration blocks are calibrated & DUAL-certified traceable to National/International standards according to ISO 6506/3 & ASTM-E10 A4.

All available scales

### REFERENCE BLOCK

### BRINELL 150x125 MM



Calibration blocks are calibrated & DUAL-certified traceable to National/International standards according to ISO 6506/3 & ASTM-E10 A4.

All available scales

# SOFTWARE

The Graphical User interface (GUI), contains Industry preferred applications, and offers easy to learn, advanced workflow control. A simple test can be set up and conducted in about 3 seconds... IMPRESSIONSTM layout & functions will match not only your particular application requirements, but also meet the needs and preferences of your operators. A user level management system maximizes their comfort and efficiency.

The unique in the industry, 15" portrait mode, capacitive touchscreen, gives room to all possible applications. Dual screen: For demanding users, a second vertical 15" or 24" landscape screen can be connected. For educational purposes, schools, universities, a full HD projector (beamer) can be connected to the HDMI supported outlet. With this many options in Hardware and Software configuration, yearly updates and on demand upgrades, IMPRESSIONSTM is truly the leading software in the industry.



## MANUAL ON-SCREEN MEASUREMENT

The crisp camera image of the indent will be surrounded by 4 filar lines. Position the filar lines by mouse, keyboard or via the touchscreen on the outer lines of the indent. The system automatically calculates and displays the hardness value and gives individual diameter values for the indent dimensions.



## AUTOMATIC ON SCREEN MEASUREMENT

Directly after the crisp image of the indent shows on the screen, the automatic measurement software finds the indent and positions the filar lines automatically on the outer lines of the indent. Manual measurement remains possible. The system automatically calculates and displays the hardness value and gives individual diameter values for the indent dimensions.



## AUTOMATIC FOCUSING

Right after you bring the workpiece surface within auto focus distance, one push on the auto focus button makes that the the system finds the best ultra-sharp focus position. In automatic testing procedures of thousands of indents, the system will find focus ultra-fast and improves efficiency for the operator.



## REPORT GENERATOR

IMPRESSIONS has a built-in report generator that allows you to create measuring data output in a professional format. The system is open, which means you can use either the standard report that INNOVATEST included, modify this or generate a new report that suits your need. Excellent functionality that supports the computer system data output via USB, wireless or in other ways via quality management systems like Q-DAS.



## USER LEVEL MANAGEMENT

Protect your system against unauthorized users. Different operators have different skills. Lock or block employees from tampering with the system. The user level management system allows you to give particular rights to some persons and block others from certain system functions or settings.



## TEST PATTERN CONFIGURATOR

Embedded in the software is the option to set up patterns of any shape. Think of circles, zig-zag, straight lines, free style patterns etc. The motorized stage will run the test patterns automatically while indents are made and the hardness of a large quantity of points can be evaluated efficiently. The manual stage versions lead you through the process while you are using the micrometer heads on the stage to position correctly.



## CHD, SHD, NHD

The efficiency of sample processing in Core Hardness Depth (CHD) measurements can be enhanced using increased automation. This IMPRESSIONSTM function is available for both manual and automatic machines. Setting up your CHD system has become a simple task while the software leads you through the process and calculates termination values and CHD values quickly.



## DRAWING & MEASURING APPLICATION

For more complex tasks you can measure distances between indents or indent locations on the screen. With just a few mouse clicks the software shows you the distance between clicks or dimensions of designated areas. A useful tool in combination with the "click and go" function for automatic testing.



## KiC CRACK MEASUREMENT

This software tool allows you to measure the cracks in surfaces after a Vickers hardness test. A tool that is vital for the testing of brittle materials like porcelain, glass, etc.



## AUTOMATIC EDGE DETECTION

The overview camera system and embedded camera provide the image of an embedded sample. This software rapidly determines the edge of the embedded sample which helps you to set up test patterns and CHD efficiently.



## ARTIFICIAL INTELLIGENCE

The conventional image processing methods on hardness testing machines are fairly successful for clean images that present clear indentation boundaries. In practice, however, workpieces or samples often have rough surfaces that compromise the quality of the image processing which could potentially result in incorrect hardness values.

# ACCESSORIES

## VIBRATION ISOLATION



UN-AVS-150



UN-AVS-300

## IRIS/POLARIZER



SA-05-0054



SA-05-0040

## OVERVIEW CAMERAS



SA-05-0018  
SA-05-0019  
SA-05-0002

SA-05-0051  
SA-05-0052  
SA-05-0053  
SA-05-0038

## OPTICAL SCANNERS



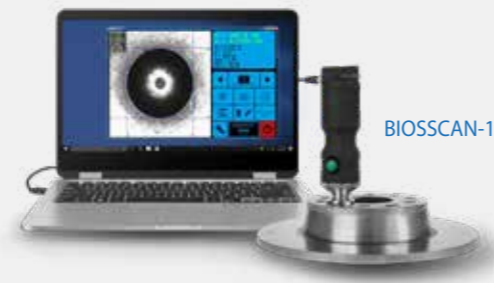
SA-12-0009



SA-12-0010



AS3001-MICRO/01  
AS3001-MICRO/02



BIOSSCAN-1

## XY-MANUAL STAGES



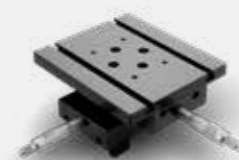
UN-XYSTAGE/115  
UN-XYSTAGE/120



IMP-DIGIMIC



BM-08-0057  
BM-08-0058  
BM-08-0059



UN-TESTTABLE/030

## XY-MOTORIZED STAGES



### Wired stages

UN-XY571212  
UN-XY571712  
UN-XY572212  
UN-XY902015  
UN-XY903015

UN-XY904015  
UN-XY932015  
UN-XY933015  
UN-XY934015

### iSMART™ stages

MA-XY7575S  
MA-XY1212S  
MA-XY2212S

MA-XY3412S  
MA-XY2015S  
MA-XY3015S  
MA-XY4015S

## ANVILS



AS3000-19-04



UN-TESTTABLE/002



UN-ANVIL/010



UN-ANVIL/011



UN-ANVIL/016



UN-VBLOCK404050



UN-CROSSBLOCK01



UN-ANVIL/020



UN-ANVIL/005



UN-ANVIL/006



UN-ANVIL/040



UN-ANVIL/045



UN-ANVIL/050



UN-ANVIL/060



UN-ANVIL/065



UN-ANVIL/070



UN-ANVIL/200



UN-CVANVIL680  
UN-CVANVIL50200



UN-ANVILSV/105



UN-ANVILSV/106



UN-VANVILBASEPL



CM-08-0186

## TEST TABLES

### ROUND



ASV700-00-20  
UN-TESTTABLE/010  
UN-TESTTABLE/011  
UN-TESTTABLE/012  
UN-TESTTABLE/013  
UN-TESTTABLE/014  
CM-08-0194

### SQUARE



UN-TESTTABLE/015  
UN-TESTTABLE/016  
UN-TESTTABLE/017  
UN-TESTTABLE/019  
AS8000XL-16-02

## SAMPLE HOLDERS

### Sample holders - Regular model



UN-ESH1  
UN-ESH4  
UN-ESH6



UN-ESH125



UN-ESH130

UN-ESH140

### Sample holders - Front operation



BM-08-0052  
BM-08-0053  
BM-08-0054



UN-ESH1



UN-ESH125

UN-ESH15

## FIXTURES AND VICES



UN-VICE/210



UN-VICE/215



UN-VICE/220



UN-VICE/230



UN-AXLECHUCK



UN-CLAMP/105



UN-CLAMP/115



UN-CLAMP/120



UN-VGROOVE-CLAMP



UN-WIRE/105



UN-JOMFIX1



UN-JOMFIX3



UN-XCNCJOMFIX1



UN-VICE/115



SA-08-0010



SA-08-0013



CM-08-0194



SA-08-0013



CM-08-0186



SA-08-0010

## CLAMPS AND INSERTS



SA-02-0110



CM-02-0304



CM-02-0313



CM-02-0311



CM-02-0314



CM-02-0312



CM-02-0315



SA-02-0128

## INDENTERS



UPI/6003



UPI/7603



UPI/2507



UPI/7000



UPI/7015



UPI/8105



UPI/6004



UPI/7606



UPI/2509



UPI/7006



UPI/2005



UPI/8010



UPI/6005



UPI/7703



UPI/2514



UPI/7005



UPI/2010



UPI/8205



UPI/7503



UPI/7706



UPI/2519



UPI/7011



UPI/2015



UPI/8220



UPI/7506



UPI/7806



UPI/7001



UPI/7010



UPI/2020



UPI/8221

**MACHINE COVERS**



- UN-COVER1
- UN-COVER2
- UN-COVER4
- UN-COVER5
- UN-COVER7
- UN-COVER8
- UN-COVER9

**FAN FILTER UNIT**



SA-16-0001

**CE SAFETY CABIN**



- SA-27-0002
- SA-27-0003
- SA-27-0004
- SA-27-0005

**MACHINE STANDS**



UN-STAND/950



UN-STAND/955



UN-STAND/956



UN-STAND/960



UN-STAND/965

# SELECTION OF OUR PRODUCT RANGE

## UNIVERSAL HARDNESS TESTERS

### VICKERS HARDNESS TESTERS



**FALCON 300G2**  
Vickers, Micro Vickers & Knoop  
5gf - 2kgf



**FALCON 400G2**  
Vickers, Micro Vickers, Knoop & Brinell  
1gf - 62.5kgf



**FALCON 450G2**  
Vickers, Micro Vickers, Knoop & Brinell  
200gf - 62.5kgf



**FALCON 500G2**  
Vickers, Micro Vickers, Knoop & Brinell  
0.1gf - 62.5kgf



**FALCON 600G2**  
Vickers, Micro Vickers, Knoop & Brinell  
0.1gf - 62.5kgf



**FALCON 800G2**  
Mikro/Makro Vickers, Knoop & Brinell  
0.1gf - 62.5kgf



**FALCON 5000G2**  
Mikro/Makro Vickers, Knoop & Brinell  
10gf - 62.5 | 250 | 750kgf



**NEMESIS 5100G2**  
Rockwell, Vickers, Knoop & Brinell  
10gf - 250 | 750 | 3000kgf



**NEMESIS 9100G2**  
Rockwell, Vickers, Knoop & Brinell  
200gf - 3000kgf



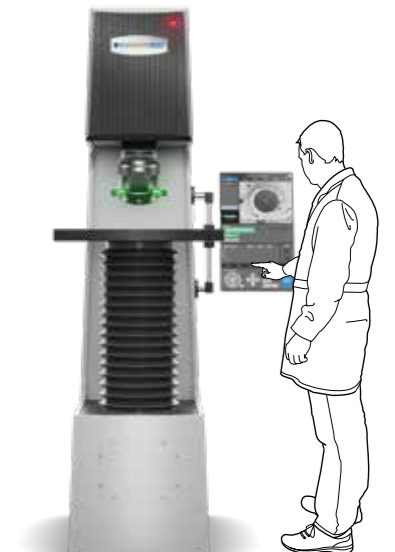
**NEXUS 7700G2**  
Rockwell, Vickers, Knoop & Brinell  
500gf - 250kgf



**NEXUS 8100G2**  
Rockwell, Vickers, Knoop & Brinell  
200gf - 3000kgf



**NEXUS 8100XLM G2**  
Rockwell, Vickers, Knoop & Brinell  
200gf - 3000kgf



**NEMESIS 9600G2**  
Rockwell, Vickers, Knoop & Brinell  
200gf - 3000kgf

### ROCKWELL HARDNESS TESTERS



**FENIX 200AR**  
Rockwell  
10kgf - 150kgf



**FENIX 200ACL**  
Rockwell & Brinell  
10kgf - 187.5kgf



**FENIX 200DCL**  
Rockwell & Brinell  
10kgf - 187.5kgf



**FENIX 300RS**  
Rockwell & Brinell  
1kgf - 250kgf



**FENIX 300RS-IMP**  
Rockwell & Brinell  
1kgf - 250kgf



**HAWK 250RS**  
Rockwell & Brinell  
1kgf - 187.5kgf



**HAWK 652RS-IMP**  
Rockwell & Brinell  
1kgf - 187.5kgf



**GEMINI 6100G2**  
Rockwell & Brinell  
1kgf - 250kgf



**GEMINI 6200G2**  
Rockwell & Brinell  
1kgf - 250kgf

### BRINELL HARDNESS TESTERS



**NEXUS 3300**  
Brinell  
62.5kgf - 3000kgf



**NEXUS 3300FA G2**  
Brinell  
31.25kgf - 3000kgf



**NEXUS 3400FA G2**  
Brinell  
31.25kgf - 3000kgf



PLEASE CHECK OUR WEBSITE TO VIEW OUR COMPLETE PRODUCT RANGE.

## EUROPE

### **INNOVATEST Deutschland GmbH Sales & Service**

Phone: +49 245 670 59 500  
info@innovatest-deutschland.com  
www.innovatest-deutschland.com

### **INNOVATEST France SARL Sales & Service**

Phone: +33 1 848 88038  
commercial@innovatest-france.com  
www.innovatest-france.com

### **INNOVATEST UK Ltd. Sales & Service**

Phone: +44 (0) 121 824 4775  
info@innovatest-uk.com  
www.innovatest-uk.com

### **INNOVATEST Polska sp. z.o.o Sales & Service**

Phone: +48 697 099 826  
info@innovatest-polska.pl  
www.innovatest-poland.com

## MIDDLE EAST

### **INNOVATEST Middle East LLC Sales & Service**

Phone: +971 4 880 0875  
info@innovatest-mideast.com  
www.innovatest-mideast.com

## NORTH-AMERICA

### **INNOVATEST USA Inc. Sales & Service**

Phone: +1 267 317 4300  
info@innovatest-usa.com  
www.innovatest-usa.com

## ASIA

### **INNOVATEST Shanghai Co., Ltd. Sales & Service**

Phone: +86 21 60906200  
Fax: +86 21 60912595  
info@innovatest-shanghai.com  
www.innovatest-shanghai.com

### **INNOVATEST Japan K.K. Sales & Service**

Phone: +81 3 6667 0554  
Fax: +81 3 6667 0556  
info@innovatest-japan.com  
www.innovatest-japan.com

### **INNOVATEST South East Asia Sales & Service**

Phone: +65 6451 1123  
Fax: +65 6452 1011  
info@innovatest-singapore.com  
www.innovatest-singapore.com



#### **Representative in Sweden**

KmK Instrument AB  
Västerås

Phone: +46 21 150 160  
info@kmk-instrument.se

**www.kmk-instrument.se**

## **CORPORATE HEAD OFFICE**

### **INNOVATEST Europe BV**

#### **Manufacturing, Distribution & Service**

Borgharenweg 140  
6222 AA MAASTRICHT  
The Netherlands

Phone: +31 43 3520060

info@innovatest-europe.com

**www.innovatest-europe.com**