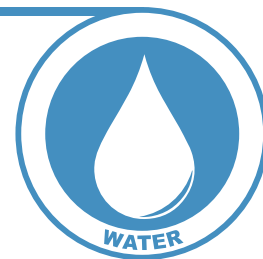


# ULTRA-PURE JUMBO FILTER



## Technical Data

	Polypropylene or Polyester
	75 l/min pr. 10"
	0,5 1 5 20 50 75 100 AC
	90%
	80°C
	10" 20"
	114mm
	DOE

Jumbo filter elements have a much larger diameter than the standard range of elements. This gives them a large capacity of 75 l/min pr. 10". The filter elements are available in pleated polyester, meltblown polypropylene, wound polypropylene and activated carbon.

Standard water filtration is done with a 5 µm filter. If you need to remove metallic particles such as ochre, we recommend to use the pleated polyester 0,5 µm filter element.

For issues with taste and odour, for example from chlorine, an activated carbon filter can be used to solve the problem. Be aware that the activated carbon is more effective the longer contact time it has. Meaning that the recommended flow rate is lower.



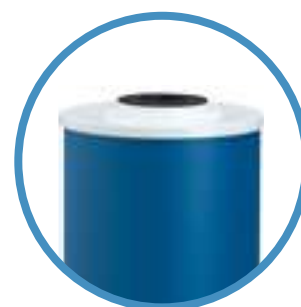
**Pleated  
Polyester**  
0,5 µm



**Meltblown  
Polypropylene**  
5 - 50 µm



**Wound  
Polypropylene**  
50 - 100 µm



**Activated  
Carbon**

Drinking and bathing water			•		
- Ochre			•	•	
- Bad taste / odour			•		•
WC and washing machines		•			
Gardening water	•				