



power
adhesives

WHAT CAN WE **GLUE** FOR YOU?

DanLube A/S

"Så ved du det holder"

Tlf.: +45 70 25 12 80

Mail: info@danlube.dk

www.danlube.dk

What can we glue for you?



Packaging

Carton sealing • Packaging sub-assemblies
Contract packaging • Waxed & coated boards
Moisture barrier attachment
Fine art packaging (acid free)
Protective foams



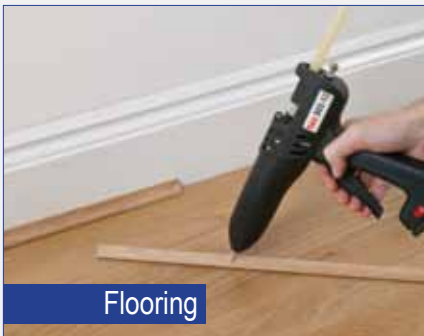
Product assembly

Tile displays • Automotive trim
Badges & emblems • Plastic assembly
Sand core assembly • Luggage assembly
Fabrics and foams • Magazine tip-ins
Sample books



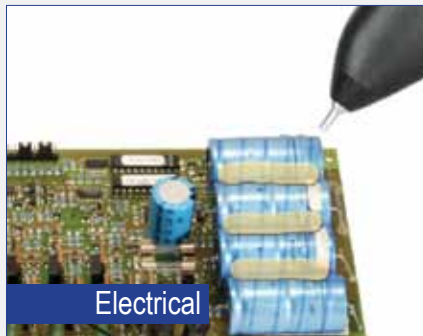
Woodwork

Upholstered furniture
Clamping, positioning & templates
Fabric bonding • Corner spacer blocks
Drawer bottom reinforcement
V-groove assembly • Knot filling
Picture framing • Securing mirrors to frames



Flooring

Gripper attachment • Carpet repairs
Stair nosing • Laminate beading attachment
Stair carpet bonding • Under-floor heating
Wood floor repairs & gap filling



Electrical

Component stabilisation
Attaching components to PC boards
Potting • Coil terminating • Wire staking
Vibration protection • Strain relief of cables
Fixing & securing battery packs
Telephone & data cable installation
Low pressure over-moulding



Floristry

Floristry foam • Flower arranging
Gift card attachment • General assembly
Balloons (using lowmelt adhesive only)
Banners • Ribbon • Rosettes



Point of sale

Laminated and coated boards
Plastic trim attachment • Reinforcement



Arts & crafts

Card making • Wooden models • Rosettes
Promotional items • Novelty crackers
Colour & glitter glues for decoration
Party hats



Confused about what equipment you need?

There's a lot to choose from! But we recommend selecting the correct adhesive for your application first. This will make it easier to choose suitable tools and accessories.

(High output tools are available for large displays)

tecbond® adhesives

tecbond® hotmelt adhesives provide instant, permanent bonding on a vast range of materials without the use of harmful solvents. They are ideal for fast repetitive gluing applications.

Our hotmelts are available in stick or cartridge form which are easily loaded into hand-held glue guns. The solid adhesive is pushed into a heated chamber where it melts, and can be extruded from the nozzle by gently squeezing the trigger.

Most materials can be bonded with hotmelt adhesives providing the parts can be assembled while the adhesive is still molten. The molten adhesive is applied to one of the surfaces to be bonded. When the parts are pressed together the heat quickly dissipates into the substrates, which solidifies the adhesive, and a bond or seal is made instantly.

Working times of our hotmelts vary from just a few seconds to several minutes: the actual time will depend on adhesive formulation, ambient temperature, substrate temperature, and the amount and configuration of the adhesive applied.

tecbond® hotmelts are 100% solid, non-toxic adhesives containing no solvents (no VOCs) or water. Users do not have to worry about odours or mould in finished products, or about paying for a solvent that just evaporates. tecbond® hotmelt adhesives are safe and easy to store, and have a virtually unlimited shelf life.

tec™ glue guns

tec™ glue guns are designed to apply our wide range of tecbond® hotmelt adhesives, easily, quickly and reliably. They are low-cost capital items, highly portable and designed to be totally reliable in tough industrial environments.

tec™ glue guns can apply hotmelt adhesive in bead, dot and even spray patterns, depending on the model selected.

The wattage of the tool normally determines the melt-rate. Tool selection should be based on the amount of adhesive required per assembly, as well as the number of assemblies needed to be produced per hour.

In general the larger tools are more powerful and are capable of providing greater volumes of hotmelt adhesive at the correct temperature for optimum bonding.



Do you have a question about any products within the tec or tecbond range? Just give our sales team a call - they'll be happy to advise you. Find our contact details on the back page.

contents

12mm (½") tec glue guns & tecbond glue sticks	4 - 7
15mm (⅝") tec glue guns & tecbond glue sticks	8 - 9
43mm (1¾") tec glue guns & tecbond cartridges	10 - 11
43mm (1¾") spraytec glue guns & spray adhesives	12 - 13
NEW tec 4500 pneumatic reservoir guns & tecbond pressure sensitive adhesives	14 - 15
Speciality tools & high performance hotmelts	16
Thermostats & gun stands	17
Nozzles & packaging with hot melts	18 - 19
Woodworking with hot melts, Mouseplane® & accessories	20 - 21
Accessories	22
Dot & bead chart	23



12mm (½") tecbond glue sticks

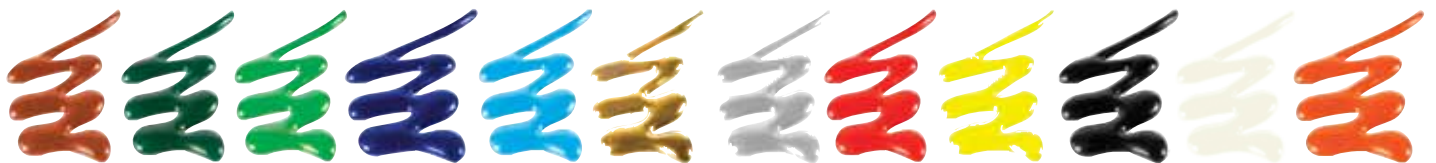


Unsure?



Unsure which adhesive formulation is the best match for your application? Just give our sales team a call - they'll be happy to advise you. Find our contact details on the back page.

Formulation	Description	Colour	Open time	Viscosity
14	High delivery, very fast setting packaging adhesive	Light brown	Short	Low
1942	Product assembly adhesive for wood and many plastics, nylon, ABS & rigid PVC	Amber	Long	Medium
1X	Medium viscosity, wood working and packaging adhesive. Medium open time	Light brown	Medium	Medium
213	Economical, general purpose adhesive. Suitable for ceramics, rigid PVC & polystyrene	Light brown	Long	High
214	Economical, fast setting, packaging adhesive	Light brown	Short	Medium
23	Medium viscosity multi-purpose adhesive. For fabric, hard & soft wood & many plastics	Light brown	Long	Medium
232	Economical, high viscosity, clear general purpose adhesive. Suitable for fabrics, wood, card, and some plastics	Clear	Medium	High
240	Multi-temp, long open time, multi-purpose, clear adhesive. For use with many plastics & light gauge metals	Clear & colours	Long	Medium
246	High performance adhesive for painted, varnished and other smooth surfaces	Clear & black	Medium	High
248	Very high performance, acrylic based hotmelt. Excellent adhesion to smooth and shiny surfaces	Clear	Long	Medium
260	High performance, long open time, tough, flexible adhesive. Suitable for ceramics, plastics & woods	Light brown	Long	Medium
261	High performance, tough, flexible adhesive with long open time. For use with ceramics, plastics incl PP/PE & woods	Light brown	Long	Low
263	Polypropylene bonding with high heat resistance	Light brown	Long	High
341	Medium viscosity, fast setting, white adhesive with instant grab, suitable for packaging and woodworking applications	White	Short	Medium
342	High viscosity, fast setting, white adhesive with instant grab. Suitable for heavy duty carton board & cable attachment	White	Very short	High
5	High delivery, low viscosity, long open time, product assembly adhesive. For wood, plastic & metals	Light brown	Long	Low
LM44	Lowmelt, fast setting, high performance, white adhesive. Ideal for expanded polystyrene, thin films & balloons	White	Short	Low
Polyamide adhesive				
7713	Economy general purpose polyamide with high heat and chemical resistance Amber, Beige, Black, Cola, Cream, Oak	6 colours	Medium	Medium
7718	Coloured, low viscosity, potting, encapsulation, and knot-filling/wood repair polyamide adhesive Amber, Beige, Black, Cola, Cream, Oak	6 colours	Short	Low
7784	High & low temperature-resistant multi-purpose polyamide adhesive	Amber	Medium	Medium
7785	High temperature- and chemical-resistant multi-purpose polyamide adhesive	Amber	Medium	Medium

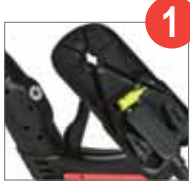


Formulation	Description	Colour	Open time	Viscosity
240 Coloured	Economical, medium viscosity, general purpose adhesive. Suitable for glass, fabrics, wood, card, and some plastics Brown, Dark Green, Light Green, Dark Blue, Light Blue, Gold, Silver, Red, Yellow, Black, White & Orange	12 colours	Long	Medium



Formulation	Description	Colour	Open time	Viscosity
240 Glitter	Economical, medium viscosity, general purpose adhesive. Suitable for glass, fabrics, wood, card, and some plastics Glitter Red, Glitter Green, Glitter Silver, Glitter Gold & Glitter Blue	5 colours	Long	Medium

Adjustable temperature control



1 The thermostat adjustment tool is stored under the gun's stand



2 Insert into the thermostat adjustment screw on the underside of the gun. Turning the screw fully anti-clockwise reduces the temp to 130°C, while turning it fully clockwise increases it to 200°C

**tec
820-12**

Adjustable temperature, heavy duty medium size 12mm (½") glue gun. Robust and easy to use, fast recovery, medium output, 2 minute warm up time & illuminated on/off switch.

Melt rate	2.5kg (5½lbs)/hr
Glue size	12mm (½") glue stick
Voltage	120V and 230V
Wattage	250W
Heater	Cartridge
Temp Control	User adjustable thermostat
Hotmelt gun °C (°F)	Adjustable 130-200°C (265-390°F)
Lowmelt gun °C (°F)	Covered above
Power cable	3m (10 ft)
Weight	500g (18oz)
Packaging	Plain box (10 per ctn)



Light industrial gun

**tec
305-12**



Light industrial 12mm (½") glue gun, light-weight and easy to use, illuminated on/off switch, removable stand, adjustable full hand trigger and replaceable nozzle.

Melt rate	900g (2lbs)/hr
Glue size	12mm (½") glue stick
Voltage	110-240V
Wattage	20W (150W)
Heater	PTC
Temp Control	Self-regulating heater
Hotmelt gun °C (°F)	195°C (380°F)
Lowmelt gun °C (°F)	130°C (265°F)
Power cable	2m (6½ ft)
Weight	250g (9oz)
Packaging	PET blister (10 per ctn)

Excellent value

**tec
805-12**



Low cost medium size industrial 12mm (½") glue gun, eco heater chamber design for low power consumption, robust & easy to use. Medium output, 3 minute warm-up time & illuminated on/off switch.

Melt rate	1.8kg (4lbs)/hr
Glue size	12mm (½") glue stick
Voltage	110-240V
Wattage	30W (250W)
Heater	PTC
Temp Control	Self-regulating heater
Hotmelt gun °C (°F)	195°C (380°F)
Lowmelt gun °C (°F)	130°C (265°F)
Power cable	2m (6½ ft)
Weight	450g (16oz)
Packaging	PET blister (10 per ctn)

Continuous industrial use

**tec
810-12**



Heavy duty medium size 12mm (½") glue gun, robust & easy to use with medium output, 2 minute warm-up time, fast recovery & illuminated on/off switch.

Melt rate	2.0kg (4½lbs)/hr
Glue size	12mm (½") glue stick
Voltage	120V and 230V
Wattage	250W
Heater	Cartridge
Temp Control	Interchangeable thermostat
Hotmelt gun °C (°F)	195°C (380°F)
Lowmelt gun °C (°F)	130°C (265°F)
Power cable	3m (10 ft)
Weight	500g (18oz)
Packaging	Plain box (10 per ctn)

12mm (½") gas-tec glue gun



Completely portable

gas-tec
600

Don't forget!



Your 12mm glue - you can find it on page 4.

The gas-tec 600 is a totally portable, robust compact hotmelt glue gun that runs on butane gas. It does not require mains electricity or batteries but operates using easily refillable LEC™ (Liquid Energy Cells) power technology. The gas-tec 600 has been built to a very high standard and incorporates a soft-feel handle and full-hand trigger, making it a very comfortable gun to use.

- > Comes complete with 2 empty LEC™ cartridges. Refill gas cartridge with a standard cigarette lighter canisters.
- > Each LEC™ gas cartridge refills in just 15 seconds - sufficient to keep the gas-tec 600 running for approximately 1½ hours.
- > Easy to start up - simply turn on the gas and press the piezo ignition button.
- > Reaches operating temperature in just 5 minutes.
- > Thermostatically controlled to give the optimum temperature to achieve the best glue delivery.
- > The gas-tec 600 can be used for a huge range of applications from shop fitting, exhibition displays, flooring, carpet laying, ceramic tile displays, low voltage wiring, dent repairs on cars and many more.
- > Uses standard tecbond 12mm (½") glue sticks.
- > Optional nozzles and spare LEC™ cartridges are available.

Melt rate	1.7kg (3.7lbs)/hr
Glue size	12mm (½") glue stick
Voltage	Gas powered
Wattage	185W (equivalent)
Heater	Catalytic
Temp Control	Thermostatic gas valve
Hotmelt gun °C (°F)	195°C (380°F)
Lowmelt gun °C (°F)	Not available
Power cable	Cordless
Weight	390g (14oz)
Packaging	PET blister (10 per ctn)

Don't forget!

Optional nozzles are available on page 18.



Learn more!
Scan for video



Supplied as a blister pack with 2 LEC™ cartridges

Exclusive LEC technology

Refilling your cartridges or LEC™ (Liquid Energy Cells) is fast and simple using standard cigarette lighter canisters.

Don't forget!



Get your additional refillable LEC cartridges on page 21 - along with protective mats & carry case



No mains electricity supply? No problem.

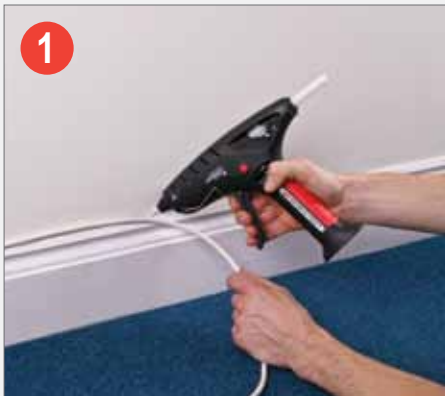
The gas-tec 600 gives you the freedom to work virtually anywhere as there are no power cables and no need for an electrical power source. It's easy to use and offers great accessibility, making it ideal for trickier applications.



Do you have a question about the gas-tec? Just call our sales team - they'll be pleased to help. Our details are on the back page.

Ideal for... awkward applications where a mains power source isn't readily available

1



Attaching cables

The portability and independent power source of the gas-tec 600 makes it ideal for applications like attaching low-voltage cables.

2



Dent repair

The gas-tec 600 can also be used as part of a paint-less dent repair system that, used together with the rest of the kit, can remove dents from cars.

3



Flooring

This gun is great for applications where freedom of movement is important, like laying gripper rods and repairing wooden floors.

15mm (5/8") tecbond glue sticks

Get even more glue per trigger pull with 15mm (5/8") glue



Increased output

With 30% more molten glue per trigger pull, you can up your productivity just by using 15mm (5/8") adhesive.

Less downtime

Tec 15mm (5/8") glue guns hold up to 60% more glue when compared with their 12mm (1/2") counterparts, so they don't need to be reloaded as often. Plus, all 15mm (5/8") tools have highly efficient melt chambers which see them heat up in only 2-3 minutes.

Same easy application

All of these benefits with the same tecbond quality that you'd expect. Instant, permanent bonding on a wide range of materials, and no harmful solvents. Still safe and easy to store with a virtually unlimited shelf life.

And the 15mm (5/8") glue sticks are just as easy to load into our tec 15mm (5/8") glue guns. With a narrow profile for improved visibility, and an extension nozzle fitted as standard, accurate glue placement has never been easier.

Still unsure?



Unsure which adhesive formulation is the best match for your application? Just give our sales team a call - they'll be happy to advise you. Find our contact details on the back page.



tecbond high performance 15mm (5/8") glue sticks

Formulation	Description	Colour	Open time	Viscosity
14	High delivery, very fast setting packaging adhesive	Light brown	Short	Low
213	Economical, general purpose adhesive. Suitable for ceramics, rigid PVC & polystyrene	Light brown	Long	High
214	Economical, fast setting, packaging adhesive	Light brown	Short	Medium
23	Medium viscosity multi-purpose adhesive. For fabric, hard & soft wood & many plastics	Light brown	Long	Medium
232	Economical, high viscosity, clear general purpose adhesive. Suitable for fabrics, wood, card, and some plastics	Clear	Medium	High
240	Multi-temp, long open time, multi-purpose, clear adhesive. For use with many plastics & light gauge metals	Clear	Long	Medium
248	Very high performance, acrylic based hotmelt. Excellent adhesion to smooth and shiny surfaces	Clear	Long	Medium
260	High performance, long open time, tough, flexible adhesive. Suitable for ceramics, plastics & woods	Light brown	Long	Medium
261	High performance, tough, flexible adhesive with long open time. For use with ceramics, plastics incl PP/PE & woods	Light brown	Long	Low
LM44	Lowmelt, fast setting, high performance, white adhesive. Ideal for expanded polystyrene, thin films & balloons	White	Short	Low
Polyamide adhesive				
7718	Low viscosity, potting, encapsulation, and knot-filling/wood repair polyamide adhesive	Amber	Short	Low
7784	High & low temperature-resistant multi-purpose polyamide adhesive	Amber	Medium	Medium
7785	High temperature- and chemical-resistant multi-purpose polyamide adhesive	Amber	Medium	Medium

Highly professional, low-cost gun

Lightweight, economic design, fitted with eco-efficient self regulating heaters for low power consumption

**tec
805-15**



Low cost medium size industrial 15mm (5/8") glue gun, eco heater chamber design for low power consumption, robust & easy to use. Medium output, 3 minute warm-up time & illuminated on/off switch.

Melt rate	1.8kg (4lbs)/hr
Glue size	15mm (5/8") glue stick
Voltage	110V - 240V
Wattage	30W (250W)
Heater	PTC
Temp Control	Self regulating heater
Hotmelt gun °C (°F)	195°C (380°F)
Lowmelt gun °C (°F)	130°C (265°F)
Power cable	2m (6½ ft)
Weight	450g (16oz)
Packaging	PET blister (10 per ctn)

Narrow profile & precision nozzle aid visibility, allowing molten glue to be placed with accuracy

Adjustable full-hand lever trigger for maximum comfort

Illuminated on/off switch

Don't forget!

! Your glue gun accessories! See pages 17-22

Multifunctional detachable base stand which includes a nozzle wrench



**tec
810-15**



Continuous industrial use



**tec
820-15**



Adjustable temperature

see page 5 for more info on the 820 tool



Heavy duty medium size 15mm (5/8") glue gun, robust & easy to use with medium output, 2 minute warm up time, fast recovery & illuminated on/off switch.

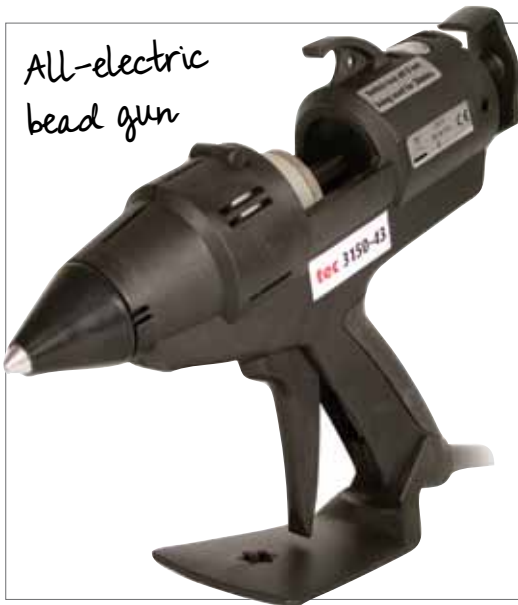
Melt rate	2.0kg (4½lbs)/hr
Glue size	15mm (5/8") glue stick
Voltage	120V and 230V
Wattage	250W
Heater	Cartridge
Temp Control	Interchangeable thermostat
Hotmelt gun °C (°F)	195°C (380°F)
Lowmelt gun °C (°F)	130°C (265°F)
Power cable	3m (10 ft)
Weight	500g (18oz)
Packaging	Plain box (10 per ctn)

Adjustable temperature, heavy duty medium size 15mm (5/8") glue gun. Robust and easy to use, fast recovery, medium output, 2 minute warm-up time & illuminated on/off switch.

Melt rate	2.5kg (5½lbs)/hr
Glue size	15mm (5/8") glue stick
Voltage	120V and 230V
Wattage	300W
Heater	Cartridge
Temp Control	User adjustable thermostat
Hotmelt gun °C (°F)	Adjustable 130-200°C (265-390°F)
Lowmelt gun °C (°F)	Covered above
Power cable	3m (10 ft)
Weight	500g (18oz)
Packaging	Plain box (10 per ctn)

43mm (1¾") tec glue guns

All-electric
bead gun



tec
3150

High output 43mm (1¾") glue gun for industrial use. All-electric & extremely robust. Power-on light with removable integral stand with built in nozzle spanner.

Melt rate	3kg (6½ lbs)/hr
Glue size	43mm (1¾") glue cartridge
Voltage	120V and 230V
Wattage	300W
Heater	Cartridge
Temp Control	Interchangeable thermostat
Hotmelt gun °C (°F)	195°C (380°F)
Lowmelt gun °C (°F)	130°C (265°F)
Power cable	3m (10 ft)
Weight	1.15kg (2½lbs)
Packaging	Plain box (5 per ctn)

Pneumatic
bead gun



tec
6100

Extremely robust 43mm (1¾") pneumatic glue gun for Industrial use. Reduces operator fatigue, power-on light, 8 bar (120psi) 14 l/min (0.5 cfm) air supply required.

Melt rate	4.1kg (9lbs)/hr
Glue size	43mm (1¾") glue cartridge
Voltage	120V and 230V
Wattage	500W
Heater	Cartridge
Temp Control	Interchangeable thermostat
Hotmelt gun °C (°F)	195°C (380°F), High temp polyamide version 215°C (420°F) also available
Lowmelt gun °C (°F)	130°C (265°F)
Power cable	3m (10 ft)
Weight	1.4kg (3lbs)
Packaging	Plain box (5 per ctn)

Pneumatic
bead gun



Speedloader
to reduce
down time!



tec
7100

Extremely robust, very high output 43mm (1¾") pneumatic glue gun for industrial use. Reduces operator fatigue, speed loader to save time and power-on light. 8 bar (120psi) 14 l/min (0.5 cfm) air supply required.

Melt rate	5.0 kg (11lbs)/hr
Glue size	43mm (1¾") glue cartridge
Voltage	120V and 230V
Wattage	1000W
Heater	Cartridge
Temp Control	Interchangeable thermostat (Contact distributor)
Hotmelt gun °C (°F)	195°C (380°F)
Lowmelt gun °C (°F)	130°C (265°F)
Power cable	3m (10 ft)
Weight	2.3kg (5lbs)
Packaging	Plain box (5 per ctn)

Don't forget!



You'll need to use an air compressor with the tec 6100 & tec 7100. You can find the **tec-AIR 50TDC** on page 22.

43mm (1¾") tec glue guns & tecbond glue cartridges

NEW!

Eco-friendly & efficient

tec
3400

High output, electronically-controlled 43mm (1¾") glue gun for Industrial use. A powerful tool featuring patented ECOTEC® technology for exceptional temperature precision with eco-friendly phased standby operation.

Melt rate	3.8kg (8½lbs+)/hr
Glue size	43mm (1¾") glue cartridge
Voltage	120V and 230V
Wattage	400W
Heater	Cartridge
Temp Control	Electronic plug-in temperature modules
Hotmelt gun °C (°F)	195°C (380°F) fitted, Lowmelt 130°C (265°F), 160°C (320°F) and 215°C (420°F) modules included (additional modules available)
Lowmelt gun °C (°F)	Covered above
Power cable	3m (10 ft)
Weight	1.15kg (2½lbs)
Packaging	Plain box (5 per ctn)

Features an automatic stand-by system that takes the temperature down in stages, protecting the gun from damage and saving energy. Stand-by is deactivated when the trigger is pulled

New plug-in modules allow the gun to be set to different temperatures from 130°C - 215°C for max bond strength



Full length trigger that allows highly accurate control of the gun's adhesive flow

A new, clever trigger-boost system recognises when the gun's trigger is used continuously and increases the power to the heater in response, upping the output even more



Learn more about the
tec 3400! Scan for video



tecbond 43mm (1¾") adhesive



Unsure?

Unsure which adhesive formulation is the best match for your application? Just give our sales team a call - they'll be happy to advise you. Find our contact details on the back page.

Formulation	Description	Colour	Open time	Viscosity
14	High delivery, very fast setting packaging adhesive	Light brown	Short	Low
1942	Product assembly adhesive for wood and many plastics, nylon, ABS & rigid PVC	Amber	Long	Medium
1X	Low viscosity, wood working and packaging adhesive. Medium open time	Light brown	Medium	Low
213	Economical, general purpose adhesive. Suitable for ceramics, rigid PVC & polystyrene	Light brown	Long	High
214	Economical, fast setting, packaging adhesive	Light brown	Short	Medium
23	Medium viscosity multi-purpose adhesive. For fabric, hard & soft wood & many plastics	Light brown	Long	Medium
232	Economical, high viscosity, clear general purpose adhesive. Suitable for fabrics, wood, card, and some plastics	Clear	Medium	High
240	Multi-temp, long open time, multi-purpose, clear adhesive. For use with many plastics & light gauge metals	Clear & colours	Long	Medium
248	Very high performance, acrylic based hotmelt. Excellent adhesion to smooth and shiny surfaces	Clear	Long	Medium
260	High performance, long open time, tough, flexible adhesive. Suitable for ceramics, plastics & woods	Light brown	Long	Medium
261	High performance, tough, flexible adhesive with long open time. For use with ceramics, plastics incl PP/PE & woods	Light brown	Long	Low
265	Long open time product assembly adhesive for smooth & shiny surfaces & many plastics	Light brown	Long	Medium
267	High & low heat resistant, medium open time, product assembly adhesive for polypropylene, wood & metals	Light brown	Long	Low
342	High viscosity, fast setting, white adhesive with instant grab. Suitable for heavy duty carton board & cable attachment	White	Very short	High
5	High delivery, low viscosity, long open time, product assembly adhesive. For wood, plastic & metals	Light brown	Long	Low
LM44	Lowmelt, fast setting, high performance, white adhesive. Ideal for expanded polystyrene, thin films & balloons	White	Short	Low
Polyamide adhesive				
7784	High & low temperature-resistant multi-purpose polyamide adhesive	Amber	Medium	Medium
7785	High temperature- and chemical-resistant multi-purpose polyamide adhesive	Amber	Medium	Medium
7718	Low viscosity, potting, encapsulation, and knot-filling/wood repair polyamide adhesive	Amber	Short	Low

Did you know? Over 90% of our products are manufactured in the UK.

Could spraytec adhesives work for you?



Learn more!
Scan for video



Don't forget!



We've got optional spray nozzles available on page 18. You can adjust your spray pattern to suit your application instantly!



Tackle sensitive materials

Spray application provides a wider area of adhesion, improving bond strength on weaker substrates when compared with bead application. Thermal damage to temperature sensitive materials is prevented, as the specially formulated adhesive quickly cools when sprayed, but still retains its surface tack.

Clean & efficient

Spray glue is more accurate than aerosols, and gives faster instant grab than solvent based spray adhesives. Did we also mention that it contains no solvent, so it's completely non-hazardous? Best of all, you only pay for the adhesive that you use, as there is no solvent to evaporate. There are no waste cans to dispose of, and the spray isn't airborne – so there's no need for protective masks or overalls, and you won't be left cleaning up excess glue from your work environment. And any unused adhesive left in the tool at the end of the job simply re-melts when the tool is next switched on and can continue to be used in the normal way.

Easy to store

Unlike solvent and water-based spray adhesives, spraytec has an indefinite shelf life and does not require any special packaging, transportation, or storage.

Ideal for... heat sensitive materials & applications requiring a wide area of coverage



Carpet backing

Faster & more efficient than most other systems, spraytec 420 is suitable for carpet backing, particularly felt backed carpets, which have proved difficult for many other types of adhesive.



Sensitive materials

Bond polystyrene, foam, bubble wrap and other temperature sensitive materials to wood, cardboard and many other substrates.



Mattress assembly

Spraytec 420 is ideal for manufacturing mattresses. The instant grab allows the soft top to be placed accurately & firmly. No solvent smells or water vapour to encourage mould.



Pallet stabilisation

Spraytec 410 can be used for improving load stability & safety. Stretch & shrink wrapping can be reduced, and the adhesive is easily removable and non-destructive.

43mm (1¾") spraytec glue guns & spray adhesives

Don't forget!



You'll need to use an air compressor with the tec 6300 & tec 7300. You can find the **tec-AIR 50TDC** on page 22.

tec
6300



tec
7300



Speedloader holds 3 extra slugs of glue!

Extremely robust 43mm (1¾") spray glue gun with power on light. Designed for industrial use, it sprays hotmelt at any angle with adjustable spray pattern. Cover large areas with a non-toxic adhesive spray system. Apply hotmelt to heat sensitive substrates without damage. 8 bar (120psi) 85 l/min (3 cfm) air supply required.

Extremely robust, 43mm (1¾") spray glue gun. Non-toxic adhesive spray system, sprays hotmelt at any angle, adjustable spray pattern to cover large areas. Apply hotmelt to heat sensitive substrates without damage. Speed loader to reduce downtime, plus power-on light. 8 bar (120psi) 85 l/min (3 cfm) air supply required.

Melt rate	4.2kg (10lbs)/hr
Glue size	43mm (1¾") glue cartridge
Voltage	120V and 230V
Wattage	500W
Heater	Cartridge
Temp Control	Interchangeable thermostat
Hotmelt gun °C (°F)	180°C (350°F)
Lowmelt gun °C (°F)	n/a
Power cable	3m (10 ft)
Weight	1.4kg (3lbs)
Packaging	Plain box (5 per ctn)

Melt rate	5.25kg (11½lbs)/hr
Glue size	43mm (1¾") glue cartridge
Voltage	120V and 230V
Wattage	1000W
Heater	Cartridge
Temp Control	Interchangeable thermostat (Contact distributor)
Hotmelt gun °C (°F)	180°C (350°F)
Lowmelt gun °C (°F)	n/a
Power cable	3m (10 ft)
Weight	2.3kg (5lbs)
Packaging	Plain box (5 per ctn)

F.Y.I



Adhesive test packs available - call us for details. You can find our contact details on the back page.

Spraytec high performance 43mm (1¾") adhesive cartridges

Specially designed for use in the tec 6300 & tec 7300, and available to bond virtually any material. The range provides variations in setting time, colour, heat resistance and viscosity to suit every application.

Formulation	Description	Colour	Open time	Viscosity
spraytec 410	Pallet stabilisation spray adhesive, also for expanded polystyrene	Off white	Up to 1 min	Medium
spraytec 420	General purpose spray adhesive. Suitable for fabric, upholstery foams, bubble film etc	Off white	Up to 3 mins	Medium
spraytec 425	High delivery, high performance, spray adhesive for wood, many plastics and pre-cast concrete moulds	Brown	Up to 3 mins	Low
spraytec 430	High performance, long open time spray adhesive. Suitable for polypropylene, foams, wood and cardboard	Brown	Up to 6 mins	Medium

Did you know? Over 90% of our products are manufactured in the UK.

NEW tecbond bulk pressure-sensitive adhesives

NEW!

tecbond 2507FS



NEW!

tecbond 2947FS



Don't forget!

To use these tecbond pressure-sensitive adhesives with the new tec 4500 guns, you will need an air compressor! The **tec-AIR 50TDC** is on page 22.



tecbond pressure-sensitive adhesives

Formulation	Description	Colour	Open time	Viscosity
2507FS	Clear, peelable adhesive suitable for making temporary bonds. Its low peel strength allows the items and the adhesive to be removed without damage	Water white	Permanent	Low
2947FS	Full pressure sensitive adhesive exhibiting strong tack and good shear strength. The adhesive can be used on most substrates and is particular suitable for coating applications	Amber	Permanent	Medium



Learn more!
Scan for video



Unsure which adhesive formulation is the best match for your application? Just give our sales team a call - they'll be happy to advise you. Find our contact details on the back page.

Ideal for... applications that require the adhesive to bond the substrates effectively, but remain tacky

1



Card & branding

Attaching branded card to products such as baking tins & trays. These can be easily removed without leaving residue or damage when the product needs to be used.

3



Giveaways

Tecbond 2507FS is a peelable adhesive, so is perfect for attaching objects or products to magazines or catalogues for giveaways.

2



Temporary bonds

The temporary bond created is ideal for fixing credit or debit cards to letters, which can be easily peeled off when needed.

4



Spray glue

Use these adhesives along with the tec 4500S to achieve maximum coverage when bonding substrates such as polystyrene and cardboard.

NEW tec 4500 pneumatic reservoir glue guns

Bead or spray operation

The tec 4500 is a highly versatile tool that can be supplied as a bead or spray applicator. Uniquely, it can also be used with bulk and shaped adhesives.

For bulk & shaped glue

Features a built-in melt chamber and pre-set temperature that allow the tec 4500 to take EVA, polyolefines, or pressure sensitive adhesives (PSA) in granular form, pillows, or 43mm (1¾") slugs. To achieve the quickest glue melt-down, we recommend using tecbond 43mm (1¾") glue slugs.

Decreased operator fatigue

Offering reliability and user-comfort, the tec 4500 ensures effortless work for the operator. Ergonomically designed and lightweight, the gun quickly and easily applies even large amounts of adhesive in bead, dot, or spray form.

Intelligent design

The innovative melt chamber allows the tec 4500 to take both bulk and shaped adhesives. It also features a one-handed twist action lock for quick & easy loading of the glue tank. The soft-closing mechanism ensures efficient energy consumption and the highest possible melt rate.

Quick warm-up, lightweight

The tec 4500 also boasts a quick start up, cutting down on warm-up time and making it ready for use, fast. It is lightweight for easy, one-handed operation, and comes with a detachable stand for increased freedom of movement when in use.

Don't forget!

For best results, use spray glue with the tec 4500S - see page 13! Adhesive test packs are available.



tec
4500
guns

Reliable, easy to use glue gun with a built-in melt chamber that allows the use of adhesives in granular form, pillows, or 43mm (1¾") slugs. Available in bead (4500B) or spray (4500S) models.

Melt rate	Granular: 1kg (2lbs) - Slugs: 2.5 kg (5½lbs)/hr
Glue size	Granules & 43mm (1¾") glue cartridge
Voltage	220 - 240V
Wattage	600W
Heater	Cartridge
Temp Control	Preset thermostat
Hotmelt gun °C (°F)	180 - 190°C
Lowmelt gun °C (°F)	n/a
Power cable	3m (10 ft)
Weight	4500B: 1.25kg (2.7lbs) 4500S: 1.45kg (3.2lbs)
Packaging	Plain box (1 per ctn)

Pssst!



New adjustable temperature model coming soon! Call us for information - our contact details are on the back page.



tec 4500B



tec 4500S



One-handed twist-action lock



For slugs, granules, pillows & slugs

Did you know? Over 90% of our products are manufactured in the UK.

Speciality tools & high performance hotmelts

low cost & easy to use



Ready to use in ten minutes

Cordless applicator for increased freedom of movement

Combined heating station & stand


tec 1050

Cartridge glue gun for peelable, full pressure-sensitive and reactive PUR adhesives. Low cost & easy to use. Cordless with base station, 10-15 minute warm-up time, power-on and ready-to-use indicator lights.

Melt rate	50g (1 1/4oz) cartridge / 10 mins
Glue size	50g (1 1/4oz) CT cartridge
Voltage	220-240V
Wattage	500W (14W)
Heater	PTC
Temp Control	Self regulating heater 130°C (265°F)
Hotmelt gun °C (°F)	Not applicable
Lowmelt gun °C (°F)	Not applicable
Power cable	2m (6 1/2 ft)
Weight	Gun 250g (9oz), base 250g (9oz)
Packaging	Plain box (10 per ctn)

tecbond high performance CT cartridges

Formulation	Description	Colour	Open time	Viscosity
2169-CT	Peelable hotmelt adhesive for temporary bonds on promotional items	Clear	Permanent	Low
4741-CT	Pressure-sensitive for smooth shiny surfaces, soft flexible bond	Amber	Permanent	Low
9010-CT	Polyurethane Reactive hotmelt. Sets hard, maximum heat and chemical resistance	White	Long	Medium
9040-CT	Polyurethane Reactive hotmelt. Tough flexible bonds, maximum heat and chemical resistance	Amber	Very long	High





dot-tec 8200

Extremely robust table-top glue dot dispenser for industrial use. Make your own glue dots from 7mm (1/4") to 30mm (1 1/4") - glue lines also possible. Uses peelable, full pressure-sensitive and conventional hotmelts in 1/2 kg (1lb) blocks, pillows and pellets. 10-20 minute warm-up time. Power-on light. No compressed air required. Optional foot pedal available.

Melt rate	1.5kg (3lb)/hr
Glue size	1/2kg (1lb) blocks
Voltage	120V and 230V
Wattage	600W
Heater	Cartridge
Temp Control	Preset thermostat 180°C (350°F)
Hotmelt gun °C (°F)	Not applicable
Lowmelt gun °C (°F)	Not applicable
Power cable	3m (10 ft)
Weight	4.7kg (10lbs)
Packaging	Plain box (1 per ctn)

tecbond high performance bulk adhesives

Formulation	Description	Colour	Open time	Viscosity
2169	Peelable hotmelt adhesive for temporary bonds on promotional items	Transparent	Permanent	Low
4741	Pressure sensitive for smooth shiny surfaces, soft flexible bond	Amber	Permanent	Low

Most hotmelts run at the 'standard' glue gun temperature of 195°C (380°F), but we also offer lowmelts that run at 130°C (265°F) and heat resistant polyamides that run at 215°C (420°F). It is also sometimes useful to run at a lower temperature to prevent heat damage to some materials the adhesive might be applied to. The tools in the table below can have thermostats or modules changed by a competent person to adjust the temperature.



Unsure which thermostat is the best match for your application or adhesive? Just give our sales team a call - they'll be happy to advise you. Find our contact details on the back page.

Don't forget!
Part numbers in green come fitted as standard with the tool.



	Temperature	tec 810 (Thermostat)	tec 820	tec 3150 (Thermostat)	tec 3400 (Plug in Module)	tec 6100 (Thermostat)	tec 6300 (Thermostat)	tec 7100 (Thermostat)	tec 7300 (Thermostat)	dot-tec 8200 (Thermostat)
For Lowmelts	130°C (266°F)	SK-810-T130	Adjustable 130°C - 195°C (265°F - 380°F)	AED057	AED081	AED015	N/A	Contact distributor	N/A	N/A
For Hotmelts	160°C (320°F)	SK-810-T160		N/A	AED082	N/A	N/A	Contact distributor	N/A	N/A
For Hotmelts	180°C (356°F)	SK-810-T180		N/A	AED083	N/A	AED012	Contact distributor	AED023	AED037
For Hotmelts	195°C (383°F)	SK-810-T195		AED055	AED084	AED010	AED010	Contact distributor	N/A	N/A
For Hotmelts	205°C (401°F)	N/A		N/A	AED085	N/A	N/A	N/A	N/A	N/A
For Polyamide Hotmelts	215°C (419°F)	SK-810-T215		N/A	AED086	AED014	N/A	Contact distributor	N/A	N/A

Don't forget!
These tools have temperatures which are factory set and **cannot** be changed, so please make sure that you order the correct tool from the outset.



	Temperature	tec 305	tec 805	gas-tec 600	tec 1050
For Lowmelts & PUR's	130°C (265°F)	tec 305LT	tec 805LT	N/A	tec 1050
For Hotmelts	195°C (380°F)	tec 305	tec 805	gas-tec 600	N/A

Gun stands

Perfect as a more secure base when you're using your glue gun for prolonged periods or want to remove the integral stand for better access.



FFS003-SPARES

PA3096-SPARES

MDC009

SK-800-MAGSTAND

Reference	Type	Description	tec 305	gas-tec 600	tec 805	tec 810	tec 820	tec 3150	tec 3400	tec 4500B	tec 4500S	tec 6100	tec 6300	tec 7100	tec 7300
FFS003-SPARES	Metal gun stand	For craft/light industrial tools, 300 series	■	-	-	-	-	-	-	-	-	-	-	-	-
PA3096-SPARES	Metal gun stand	For heavy duty tools, 3000, 6000 & 7000 series (can be wall mounted)	-	-	-	-	-	■	■	-	-	■	■	■	■
MDC009	Metal gun stand	For 600 & 800 series tools (can also be wall mounted)	-	■	■	■	■	-	-	-	-	-	-	-	-
SK-800-MAGSTAND	Magnetic gun stand	For 800 series only, smaller stand attaches to metal plate or other metal surfaces	-	-	■	■	■	-	-	-	-	-	-	-	-

Nozzles

A wide variety of nozzles are available for specialised purposes and to speed up adhesive application. These include multi-hole, extension, spreader and special nozzles for carton closing.



Standard fitted nozzles are shown in green. Do not fit or change nozzles unless the gun is hot!

MDC021



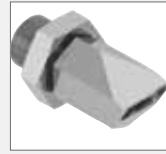
ADJ010



MDJ016



MDJ017



MDJ018



MDJ019



SK-600-Nozzle



ADJ023



ADJ012



ADJ013



ADJ014



ADJ015



ADJ016



ADJ017



ADJ018



Reference	Type	Description	Valve type	Material	tec 305	gastec 600	tec 805	tec 810	tec 820	tec 3150	tec 3400	tec 6100	tec 6300	tec 7100	tec 7300
ADJ010	Standard Ext Nozzle	2mm (0.080") orifice, 12mm (1/2") extension	BS	AL											
MDJ016	Standard Ext Nozzle	2mm (0.080") orifice, 12mm (1/2") extension	O	AL											
MDJ017	Slotted Spreader Nozzle	Allows a 12mm (1/2") wide spread of glue	O	AL											
MDJ018	Precision Nozzle	1.25mm (0.050") orifice, 5mm (1/4") extension	O	AL											
MDJ019	Spreader Extension Nozzle	5mm (3/16") orifice, 12mm (1/2") extension	O	AL											
SK-600-Nozzle	Nozzle and Shroud Kit	2mm (0.080") orifice, 12mm (1/2") extension	BS	AL											
ADJ023	Standard nozzle with aluminium cap	3.5mm (0.138") orifice	BS	ST											
MDC021	Wear resistant steel nozzle cap for ADJ023	3.5mm (0.138") orifice	-	-											
ADJ012	Spreader Extension Nozzle	6mm (1/4") wide flat orifice, 30mm (1 1/4") extension	BS	ST											
ADJ013	Angled Extension Nozzle	3mm (0.120") orifice, 30mm (1 1/4") extension	BS	ST											
ADJ014	Precision Extension Nozzle	1.25mm (0.050") orifice, 30mm (1 1/4") extension	BS	ST											
ADJ015	2 Hole Nozzle	2 parallel adhesive lines 10mm (0.4") apart	BS	ST											
ADJ016	3 Hole Nozzle	3 parallel adhesive lines 5mm (1/4") apart	BS	ST											
ADJ017	'L' Nozzle	Fast full overlap carton sealing	BS	ST											
ADJ018	'T' Nozzle	Fast centre flap carton sealing	BS	ST											

Spray nozzles

Available to fit tec 6300 & tec 7300

Table keychart

BS: Ball and Spring O: Oiler
AL: Aluminium ST: Steel



Narrow



Medium



Wide



Each spray nozzle includes these parts

Reference	Type	Description	tec 305	gastec 600	tec 805	tec 810	tec 820	tec 3150	tec 3400	tec 6100	tec 6300	tec 7100	tec 7300
PA6045	Narrow angle spray nozzle	1.2mm (0.050") orifice (Red)											
PA6046	Narrow angle spray nozzle	1.5mm (0.060") orifice (Red)											
PA6056	Narrow angle spray nozzle	2.0mm (0.080") orifice (Red)											
PA6060	Medium angle spray nozzle	2.0mm (0.080") orifice (Yellow)											
PA6061	Medium angle spray nozzle	1.5mm (0.060") orifice (Yellow)											
PA6064	Wide angle spray nozzle	2.0mm (0.080") orifice (Blue)											

Strong & non-toxic

Tecbond adhesives will not have an adverse chemical effect on the substrates or the contents being packed, unlike solvent based adhesives which could damage expensive or delicate contents. Hot melts will give you a very strong tamper-proof seal that adds extra security to your packaging, as well as improving the rigidity of the carton. Plus, by using tecbond hot melts, you won't obscure any graphics that could be printed on the outside of the carton, as can often happen when using other closing systems such as tape or staples.

Fast, clean bonds

With almost instant setting speeds, tecbond hot melts offer fast, clean bonding on a range of substrates with no messy residue once cooled.

Speciality nozzles available

Extension, multi-hole, and spray nozzles are available to help you maximise your tec glue guns and tecbond glue for packaging. We particularly recommend the ADJ017 and ADJ018 nozzles that have been developed specifically for fast and efficient carton closing.



Consider switching your tape and stretch film for a glue gun and hot melt adhesives when it comes to packaging - they're stronger, faster, cleaner & non-destructive.



Ideal for... saving time and money on packaging applications



POS displays

Tecbond 265 or 261 are able to bond most varnish and coated boards used in point of sale displays, having been specially formulated to bond difficult substrates.



Packaging

For fast closing of cartons, tray assembly, and wrap-around packaging, tecbond 14 or 214 provide the ideal solution. See also ADJ017 & ADJ018 nozzles for carton closing.



Protective foams

Attaching protective foams and similar materials to the inside of cardboard or wooden cases is made easy and fast using tecbond hotmelt or spraytec adhesive.



Sensitive materials

Spraytec adhesive is ideal for attaching heat-sensitive substrates such as polystyrene, and for achieving wide coverage, making it ideal for pallet stabilisation. See page 13 for details.

Woodworking with hot melt adhesives

The tec 805, tec 820, tec 3400 and tec 6100 are all good options for woodworking

Still using traditional fastenings?

Did you know that hot melts are faster to apply, create a stronger, cleaner bond, are more efficient and less destructive than cold glue, tape, and staples?

Not just for bonding

Even though we're very good at it. But with such a comprehensive range of tecbond glues on offer, we've got both bonding **and** wood filling covered. So not only can you assemble things like V-grooves and templates, attach corner blocks and reinforcing cleats to furniture, and even add some decorative mouldings here and there, you can also use tecbond glues to repair knot damage and scratches to wooden surfaces.

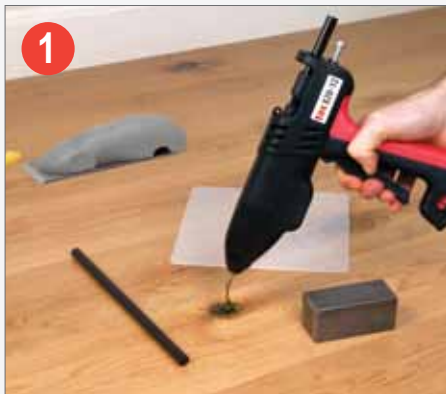
Additional tools

There's the Mouseplane® (opposite) to help you trim away wood and dried glue, and extension nozzles are available for filling tricky holes (see page 18 or call our sales team to find out about more options). If you want a tool that can cope with bonding and wood filling, we'd recommend the tec 820. The adjustable temperature means that it can be turned down to around 160°C-180°C for wood filling (the lower temperature draws less moisture out of the wood), and turned up to around 195°C for bonding wood, as this gives better bond strength. See page 5 for more information.



For more information on how tec & tecbond products can help with your woodworking applications, call our sales team. You can find our contact details on the back page.

Ideal for... a range of bonding & wood-filling applications



1

Knot filling

Fast and effective repair of knot defects, scratches and other forms of deep wood damage. We'd recommend using the tec 305, or the tec 820 with the temp adjusted to 160°C - 180°C.



3

Reinforcing

Fasten corner blocks, secure reinforcing cleats to drawer bottoms and wardrobe & cabinet backings, and make mirror to frame fastening quicker and easier.



2

Assembly

Bond decorative mouldings onto caskets, assemble V-grooves, build templates quickly and easily.



4

Flooring

Attach wooden gripper rods to flooring in no time and complete wooden floor repairs with coloured adhesive filler. See tecbond 7713 & 7718 on page 4.

Carry case



! Please note:
Case is
sold alone,
not with
contents
shown

Multi-purpose carry-case, can be used with gas-tec 600, tec 305 & tec 800 series guns. Can also take the tec mat and other accessories.

Silicone drip mat



Silicone rubber drip mat protects work surface.
Size 200mm x 200mm x 1.75mm



Refillable gas cartridge x 3



Supplied in packs of three refillable LEC™ cartridges (for use with the gas-tec 600).

Mouseplane®



Trim glue lines & wood in no time!



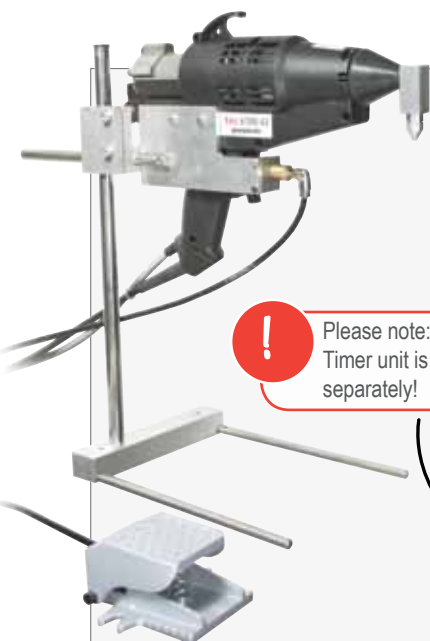
For the flush trimming of glue lines and wood, the Mouseplane® takes away the need for heavy duty sanding to remove dried glue or to level wood surfaces. It is a most useful tool for carpenters, builders, kitchen fitters and cabinet makers.

It has the comfort and ease-of-use of a plane, combined with the sharpness and speed of a chisel.

Don't forget!

! To order your spare blade!

Reference	Description	tec 305	gastec 600	tec 805	tec 810	tec 820	tec 3150	tec 3400	tec 4500B	tec 4500S	tec 6100	tec 6300	tec 7100	tec 7300
DDP002	Multi-purpose carry-case.	■	■	■	■	■	-	-	-	-	-	-	-	-
TEC MAT	Silicone rubber drip mat protects work surface. Size 200mm x 200mm x 1.75mm	■	■	■	■	■	■	■	■	■	■	■	■	■
TEC LEC-10	Refillable cartridges LEC™ (Liquid Energy Cells) x 3	-	■	-	-	-	-	-	-	-	-	-	-	-
ADD066-BR1-TEC	Mouseplane for flush trimming of glue lines and wood	■	■	■	■	■	■	■	■	■	■	■	■	■
SDC005-BR1-TEC	Mouseplane replacement blade	■	■	■	■	■	■	■	■	■	■	■	■	■



Bench mount kit & timer

! Please note:
Timer unit is sold separately!



Reduce fatigue with hands-free operation!

The tec 6100-BMK (Bench Mount Kit) converts your tec 6100 & tec 7100 to a statically mounted, foot operated glue station. It allows the operator to have both hands free for gluing applications, improving productivity by up to 100%.

The tec 4000-TK (Timer Control) enables a controlled amount of adhesive to be applied. This improves quality, guarantees consistent bonding and reduces the amount of adhesive used. Can only be used in conjunction with the bench mount kit.

Silent air compressor

TEC-AIR 50TDC



The tec-AIR 50TDC is an almost silent, compact, air compressor. It weighs just 21 kilos (46lbs), and comes complete with a robust tubular carrying frame. It is rated at 50 l/min (2.15cfm) and works to a maximum pressure of 8 bar (120psi). It is capable of operating up to two tec 6100 or tec 7100 applicators or one tec 6300 or tec 7300 spray applicator intermittently for small area coverage. It can also be used with most other pneumatic tools such as staplers, air brushes and tyre inflators.

Maximum pressure	8bar (120psi)
Maximum volume	50 l/min (2.15cfm)
Receiver capacity	3 litres
Voltage	230V
Wattage	340W
Power cable	2m (6½ ft)
Weight	21kgs (46lbs)
Packaging	Plain box (1 per ctn)



Pressure regulator



For longer tool life

This combined pressure regulator, filter and water separator is ideal for use with the tec 6100, tec 6300, tec 7100 & tec 7300 glue guns. It is used to ensure accurate adhesive dispensing and long tool life.



Spring balancer



Reduce operator fatigue

The SB/1200 spring balancer is a tool support system with an easily adjustable tension and a maximum cord length of 1.6 metres (5ft). It minimises operator fatigue, increases productivity and prevents tools from being dropped & damaged.

Reference	Description	tec 305	gastec 600	tec 805	tec 810	tec 820	tec 3150	tec 3400	tec 4500B	tec 4500S	tec 6100	tec 6300	tec 7100	tec 7300
TEC6100-BMK	Bench mount kit & foot pedal	-	-	-	-	-	-	-	-	-	■	-	■	-
TEC4000-TK	Timer Control	-	-	-	-	-	-	-	-	-	■	-	■	-
TEC-AIR50TDC	Silent air compressor	-	-	-	-	-	-	-	■	■	■	■	■	■
PA6039	Combined pressure regulator, filter and water separator	-	-	-	-	-	-	-	■	■	■	■	■	■
SB/1200	Spring balancer for tools up to 1.5kg (3lbs)	■	-	■	■	■	■	■	-	-	-	-	-	-
SB/3000	Spring balancer for tools from 1.5 up to 3kg (3-6.5lbs)	-	-	-	-	-	-	-	■	■	■	■	■	■

Get the most mileage possible out of your adhesive with our guide to glue coverage. How you apply your tecbond glue sticks in bead, dot or spray form affects how many applications you can achieve per kilo.

dots



Useful note: bigger dots give longer working time as they hold the heat better

Number of dots per kilo



Do you have a query about adhesive? Just call our expert sales team - they'll be pleased to help. Our details are on the back page.



1



2



3



4

- 1 Small drop: 6600 dots per kilo
- 2 Small dot : 3390 dots per kilo
- 3 Medium dot: 1520 dots per kilo
- 4 Large dot: 735 dots per kilo

beads

Linear metres per kilo

Don't forget!



Adhesive test packs of 43mm and spray glue are available - just call us for details.



1



2



3



4



5

- 1 A 1.5 mm bead: 560 linear metres/kg
- 2 A 3 mm bead: 153 linear metres/kg
- 3 A 6 mm bead: 67 linear metres/kg
- 4 A 10 mm bead: 46 linear metres/kg
- 5 A 12.5 mm bead: 31 linear metres/kg

spray



Useful note: a spiral spray pattern gives more working time and stronger bonds than a splatter pattern

Spray grade patterns

Don't forget!



You can find spray glue and spray guns on page 13, and optional spray nozzles on page 18!



1



2



3

- 1 Standard bead application
- 2 Spray pattern
- 3 Wide pattern

Typical spray usage 20 - 80 gsm



British made!

We are a highly motivated, British based, ISO 9001 company. We source our components and raw materials from some of the best companies in the world. Over 90% of our products are manufactured in the UK.



Recycling!

To reduce our impact on the environment our adhesives are often formulated using raw materials that have been harvested from sustainable, managed forests. Our packaging is recyclable and where possible made from recycled materials.



Call us now for more information

+44 (0) 1268 885 800

DanLube A/S

"Så ved du det holder"

Tlf.: +45 70 25 12 80

Mail: info@danlube.dk - www.danlube.dk

Power Adhesives Limited

1 Lords Way, Basildon, Essex, SS13 1TN, England

Tel: +44 (0)1268 885800 Fax: +44 (0)1268 885810

sales@poweradhesives.com www.poweradhesives.com

tec
glue guns

tecbond
adhesives

