


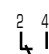
Micro Switch

Typserække MFI

DIN 41635A

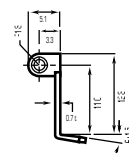
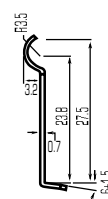
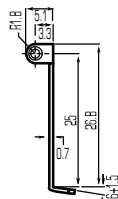
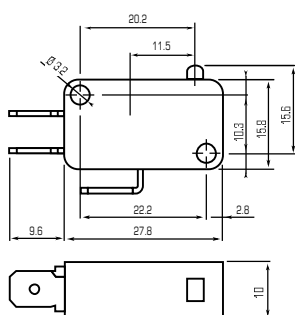


Generelt

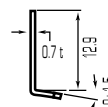
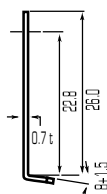
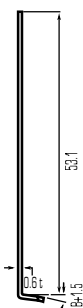
- Selvrensende sølvlegerings kontakter
- Tvangsbrudt NC kontakt \ominus
- Momentkontakt
- 7 forskellige versioner
- Godkendelser 
- Konfiguration 

Tekniske data

Certificater	IIEC/EN61058, UL 1054
Max kontaktspænding	250V
Nom. isolationsspænding	1500 v
Belastning	8A-250V Ohmsk-, 3A-250V induktiv-belastning
Drift temperatur	-25 – +85 grc
Levetid	Mekanisk 10 ⁶ , elektrisk 5x10 ⁵
Tilslutning:	Spadestik 6,3 x 0,8mm



TYPE	MFI	MFI.1	MFI.2	MFI.3
MICROSWITCH MODEL	Stempel	lang arm m/rulle	Lang arm m/bue	Arm m/rulle
VAREN./EANNR.	8718234075054	8718234075269	8718234075252	8718234075245



TYPE	MFI.4	MFI.5	MFI.6
MICROSWITCH MODEL	Lang arm	Arm	Kort arm
VAREN./EANNR.	8718234075238	8718234075221	8718234075214