

PRECISION INDEXING SOLUTIONS

Features and Benefits

The **CAMCO RDM Series** is a line of cam-operated rotary index drives, designed to move a wide array of products and components smoothly and with precision. Preloaded for no backlash, they have the capacity for handling high loads and speeds with controlled acceleration and deceleration for repeatable, accurate positioning.

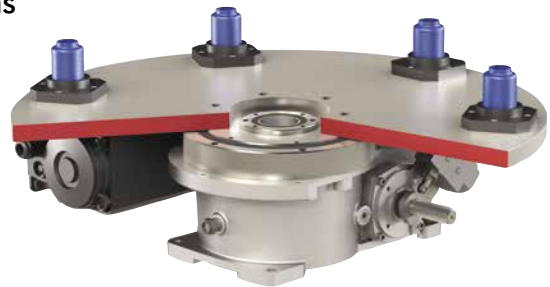
- High precision, hardened cams available in standard and special motions
- Superior accuracy at the working radius when compared to a traditional indexer
- Sealed 4-point contact output bearing and large cam followers for superior accuracy and load capacity
- 60 Station capacity, ideal for multi-part automatic assembly machines
- Center through hole accommodates machine utilities
- Servo-driven solutions available for complex or variable indexing profiles
- Optional Output Overload Clutch available



Application Examples

Cycle on Demand Indexer with Fixed Number of Stations

- RDM indexer with user controlled variable dwell time
- Single index cycle with user controlled variable dwell time
- Index time is controlled by varying frequency setting of inverter drive
- 60 or 30 indexing cycles per minute using an AC or DC motor and drive respectively
- Increased productivity cycle rates with an Output Clutch-Brake option



Cambot Flexible Pick and Place Solutions

- Servo driven indexer supporting high moment capacity payloads
- Large output flange for mounting a custom end-effector solution
- Integrate Destaco's versatile grippers, slides and vacuum products for pick and place actuation



CAMCO XPRESS PROGRAM

601RDM and 902RDM Series

Destaco continues to offer excellent service to our customers by providing the most common models of our **Camco RDM Series** as fast as you need them.



Base Models

Please contact your Destaco Camco Sales Team to learn more features of the RDM Series and details of the Xpress Program.



601RDM
Load Capacity:
 Radial: 945 lbs
 Thrust/Axial: 2360 lbs



902RDM
Load Capacity:
 Radial: 3540 lbs
 Thrust/Axial: 7000 lbs
 with Standard Torque and
 Detector Plate Settings



Stops		Motion	Reducer	Ratio	Motor	Optional Controller	Clutch
(M)601RDM	(M)902RDM						
					601RDM W/0.33HP 230/460V or 90/180V DC Motor	Allen Bradley PowerFlex 523 / 525 <small>(Allen Bradley, PowerFlex are registered brands of Rockwell Automation)</small>	
					902RDM W/1HP, 56C 230/460V or 90/180V DC Motor		

RDM SERIES

Rotary Index Drive | How To Order

Base Model*		Option Tables Page #	Index Mounting (See Figure 1)	Reducer/Motor (Table 1)	Reducer Mounting (See Figure 2)	Cycling Sensor (See Figure 3)	Description
Imperial	Metric						
N/A	80RDM	5	1	Reducer/Motor (Table 1) Note: Set Reducer Mounting option to 0 when Reducer/Motor option is 0000.	0 = No Reducer	0 = No Sensors	
601RDM	M601RDM	11	2		A J	A	Single Cam w/PNP Prox
902RDM	M902RDM	17	3		B K	B	Single Cam w/NPN Prox
N/A	1100RDM	23	4		C L	C	Dual Cam w/PNP Prox
1305RDM	M1305RDM	29	5		D M	D	Dual Cam w/NPN Prox
1800RDM	M1800RDM	35	6		E N	E	Single Cam/Prox Bracket
				F P	F	Dual Cam/Prox Bracket	
				G R	G	Single Cam, w/Mech LS	
				H S	H	Dual Cam, w/Mech LS	

*Right Hand Cam only

601RDM - **C** - **T** - **P** - **RM2E** - **000** - **C** - **L** - **A** - **40EA** - **A02**

Motion	Description
A	2-Stop-330
B	3-Stop-330
C	4-Stop-270
D	4-Stop-330
E	6-Stop-270
F	6-Stop-330
G	8-Stop-270
H	8-Stop-330
I	12-Stop-270
J	12-Stop-330
K	16-Stop-270
L	16-Stop-330
M	8:1 Constant-Lead
N	12:1 Constant-Lead
P	16:1 Constant-Lead
R*	24:1 Constant-Lead

Center Post	Code	Description
All Sizes	0	No Reducer
	P	Center Post
902 1100 1305	T	Tool Plate Mounting Holes
	B	Center Post + Tool Plate Mounting Holes

Motor Brake Settings (Table 2)	Reducer Gear Ratio (Table 3)	Output Clutch (Table 4)	Motor Control (Table 5)
--------------------------------	------------------------------	-------------------------	-------------------------

*Models 601, 902, 1100 only.



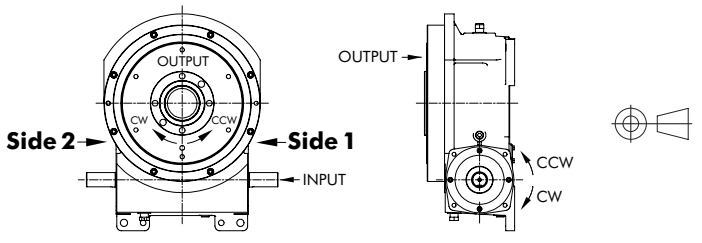
Input Shaft Configuration/Rotation

Relative Rotation for Right Hand Cam:

Side 1: CW Input, CCW Output

Side 2: CCW input, CW Output

NOTE: Input can be driven in either direction. Reducer, Motor and adapter plates can be mounted on either side 1 or side 2 to drive input.



Index Mounting (Figure 1)

OVOI (output vertical, over input)	OVUI (output vertical, under input)	OHOI (output horizontal, over input)	OHUI (output horizontal, under input)	H-S1-UP (output horizontal, side 1 up)	H-S2-UP (output horizontal, side 2 up)
1	2	3	4	5	6

Other Motions (stops and index periods) available. Contact your DESTACO sales representative for more information.

Gear Reducer Mounting Positions (Figure 2)

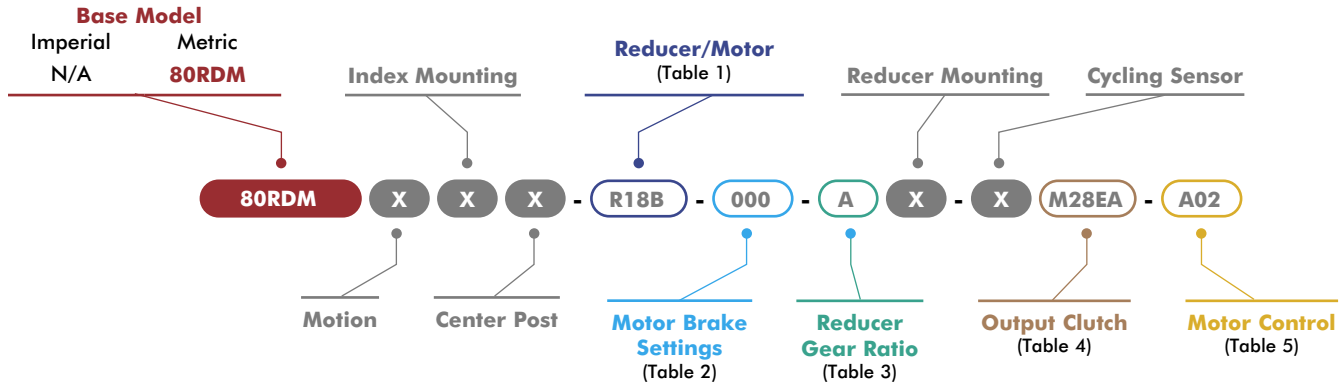
		Mounting "A"		Mounting "B"	
		Right Hand	Left Hand	Right Hand	Left Hand
SIDE 1					
SIDE 2					

Cycling Sensor Options (Figure 3)

Single Cam with (A) PNP or (B) NPN Proximity Sensor	Dual Cam with (A) PNP or (B) NPN Proximity Sensor	Single Cam with Proximity Sensor Bracket	Dual Cam with Proximity Sensor Bracket	Single Cam with Mechanical Limit Switch	Dual Cam with Mechanical Limit Switch

80RDM SERIES

Rotary Index Drive | How To Order



X = See Page 3 for option information.

1 Reducer/Motor Options

Code	Description
0000	No Reducer or Motor*
R180 Motors	
R18X	R180 Adapter only*
R18A	R180 Reducer
R18B	R180 Reducer with 0.33HP 230/460V AC Motor
R18C	R180 Reducer with 0.33HP 90V DC Motor
R18D	R180 Reducer with 0.33HP 180V DC Motor
STM RMI-28/40 Motors	
RM1A	RMI-28 Adapter only*
RM1B	STM RMI-28/LFB/IEC56-B14 Reducer
RM1C	STM RMI-28/LFB with 0.09kW Motor
RM2A	RMI-40 Adapter only*
RM2B	STM RMI-40/LFB/IEC63-B14 Reducer
RM2C	STM RMI-40/LFB/IEC71-B14 Reducer
RM2D	STM RMI-40/LFB with 0.18kW Motor
RM2E	STM RMI-40/LFB with 0.25kW Motor

*All Reducer/Motor adapters require Gear Ratio option to be 0.

2 Motor Brake

Code	Description
000	No Brake

3 Reducer Gear Ratios*

Code	Description	
	R180	STM RMI-28/40
0	N/A	N/A
A	10:1	10:1
B	15:1	15:1
C	20:1	20:1
D	25:1	28:1
E	30:1	40:1
F	40:1	49:1
G	50:1	56:1
H	60:1	70:1

*All Reducer/Motor adapters require Gear Ratio option to be 0.
Select Gear ratio column based on the reducer type selected.

4 Output Clutch & Settings

80RDM Metric Clutch Models	
Code	Description
0000	No Output Overload Clutch
M28DA	M2.8D W/54 Nm, Standard*
M28DB	M2.8D W/96 Nm, Standard*
M28DC	M2.8D W/147 Nm, Standard*
M28DD	M2.8D W/249 Nm, Standard*
M28DE	M2.8D W/350 Nm, Standard*
M28DF	M2.8D W/45 Nm, Standard*
M28DG	M2.8D W/79 Nm, Standard*
M28DH	M2.8D W/124 Nm, Standard*
M28DJ	M2.8D W/203 Nm, Standard*
M28DK	M2.8D W/54 Nm, Thru-Hole
M28DL	M2.8D W/96 Nm, Thru-Hole
M28DM	M2.8D W/147 Nm, Thru-Hole
M28DN	M2.8D W/249 Nm, Thru-Hole
M28DP	M2.8D W/350 Nm, Thru-Hole
M28DQ	M2.8D W/45 Nm, Thru-Hole
M28DR	M2.8D W/79 Nm, Thru-Hole
M28DS	M2.8D W/124 Nm, Thru-Hole
M28DT	M2.8D W/203 Nm, Thru-Hole
M28EA	M2.8D W/54 Nm, Standard, EZ*
M28EB	M2.8D W/96 Nm, Standard, EZ*
M28EC	M2.8D W/147 Nm, Standard, EZ*
M28ED	M2.8D W/249 Nm, Standard, EZ*
M28EE	M2.8D W/350 Nm, Standard, EZ*
M28EF	M2.8D W/45 Nm, Standard, EZ*
M28EG	M2.8D W/79 Nm, Standard, EZ*
M28EH	M2.8D W/124 Nm, Standard, EZ*
M28EJ	M2.8D W/203 Nm, Standard, EZ*
M28EK	M2.8D W/54 Nm, Thru-Hole, EZ
M28EL	M2.8D W/96 Nm, Thru-Hole, EZ
M28EM	M2.8D W/147 Nm, Thru-Hole, EZ
M28EN	M2.8D W/249 Nm, Thru-Hole, EZ
M28EP	M2.8D W/350 Nm, Thru-Hole, EZ
M28EQ	M2.8D W/45 Nm, Thru-Hole, EZ
M28ER	M2.8D W/79 Nm, Thru-Hole, EZ
M28ES	M2.8D W/124 Nm, Thru-Hole, EZ
M28ET	M2.8D W/203 Nm, Thru-Hole, EZ

*Cannot be used with center post option P

5 Motor Control

Code	Description	
000	NO MOTOR CONTROL	
A01		120V 1Ph
A02	(AC) PowerFlex 523 1HP	240V 1Ph
A03		480V 3Ph
A04		120V 1Ph
A05	(AC) PowerFlex 525 1HP	240V 1Ph
A06		480V 3Ph
D01		Uni-Directional
D02	(DC) Varipak 1HP 90VDC	Bi-Directional
D03		Uni-Directional
D04	(DC) Varipak 2HP 180VDC	Bi-Directional

Maximum Inertia x 1000 kg-cm ² [lb-in ²] for standard package							
Stops	Motion Time [seconds]						
	0.458	0.611	0.764	0.917	1.222	1.528	1.833
2	0 [0]	3 [1]	6 [2]	15 [5]	29 [10]	47 [16]	67 [23]
3	3 [1]	9 [3]	20 [7]	32 [11]	61 [21]	94 [32]	138 [47]
4	6 [2]	18 [6]	38 [13]	67 [23]	135[46]	217 [74]	304 [104]
6	15 [5]	38 [13]	82 [28]	126 [43]	246 [84]	401 [137]	559 [191]
8	20 [7]	44 [15]	73 [25]	114 [39]	222 [76]	372 [127]	559 [191]
12	50 [17]	99 [34]	167 [57]	258 [88]	497 [170]	559 [191]	559 [191]
16	47 [16]	91 [31]	152 [52]	231 [79]	448 [153]	559 [191]	559 [191]
Reducer Ratio							
	15	20	25	30	40	50	60

Contact your DESTACO sales representative for more information.

Features

- R180 Reducer (Ratios from 15:1 to 60:1)
 - Double Extended Worm Shaft (Input)
 - Worm Shaft Handwheel
- Double Extended Camshaft (Input Shaft)
- Center Thru Hole (Ø70 mm [Ø2.76 in.])
- 1/3 HP AC Drive Package with Inverter Duty Motor and IM-pAC AC Drive (up to 60 cpm)
- Cycle Cam and Limit Switch Mounted to Camshaft
- Right Hand Cam
- Universal Mounting Capability

Output Load Capacity (loads carried during index):

Radial	3358 N [755 lbs]
Thrust/Axial	8385 N [1885 lbs]
Moment	213 N-m [1885 in-lb]

Typical Application Dial Diameter:

203 mm [8 in] to 711 mm [28 in]

Accuracy

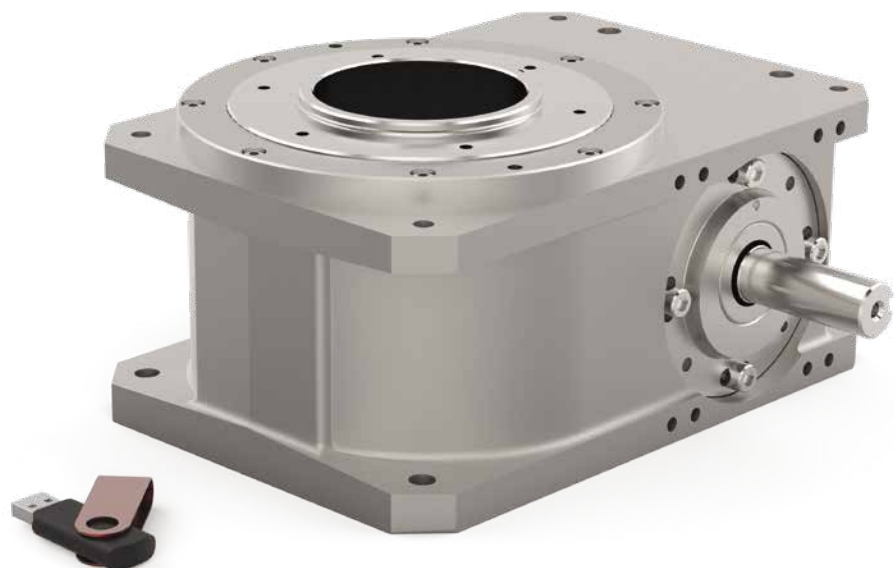
±44 arcsec / ±0,08 mm [±.003in]
at 355,6 mm [14in] Radius

Repeatability

±11 arcsec / ±0,018 mm [±.0007in]
at 355,6 mm [14in] Radius

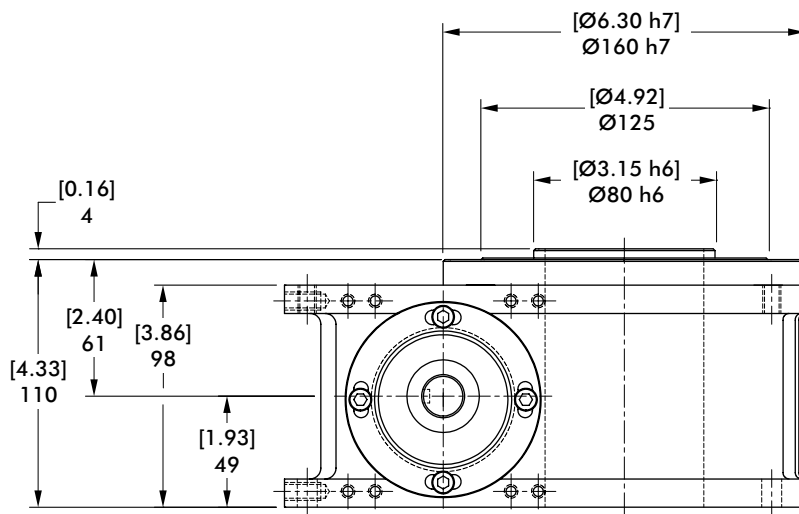
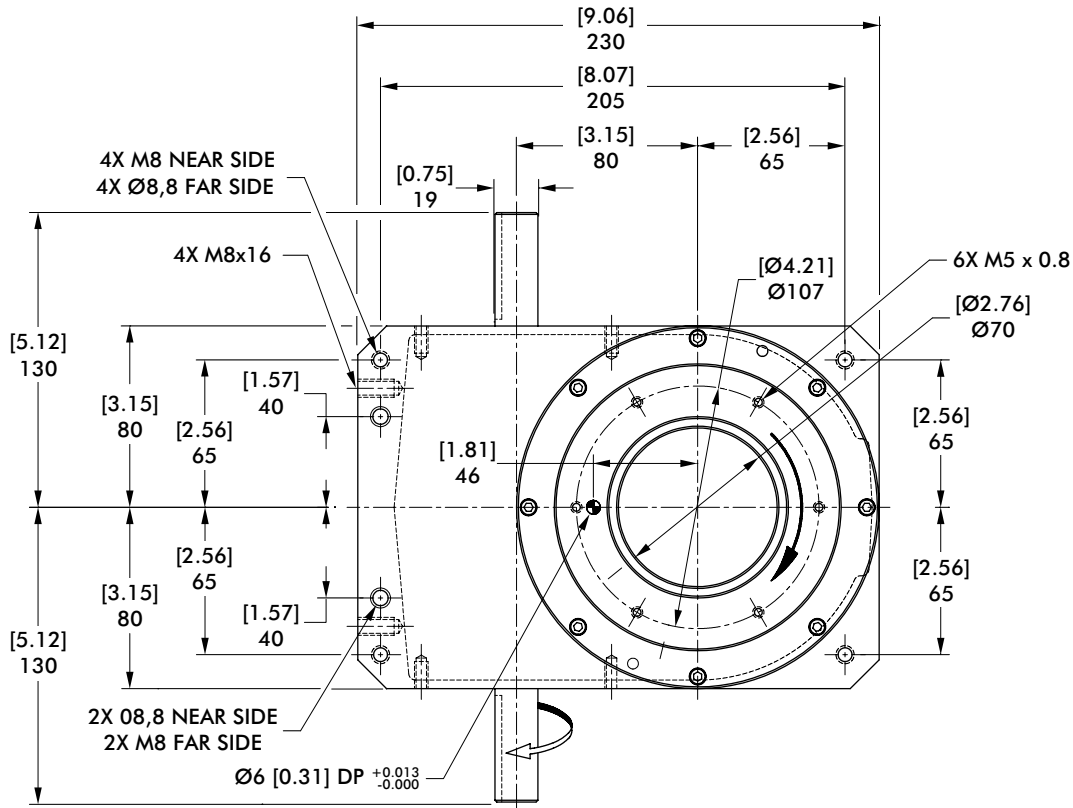
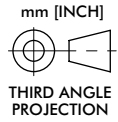
Optional Accessories

- 1/3 HP DC Motor
- Varipak DC Motor Control (up to 30 cpm)
- Output Mechanical Overload Clutch
 - See Page 9
- EZ Mount Dial Adapter
- Stationary Center Post
- Dual Cam and Limit Switch
- Electric Clutch-Brake
- Left Hand Cam



8ORDM SERIES

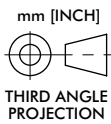
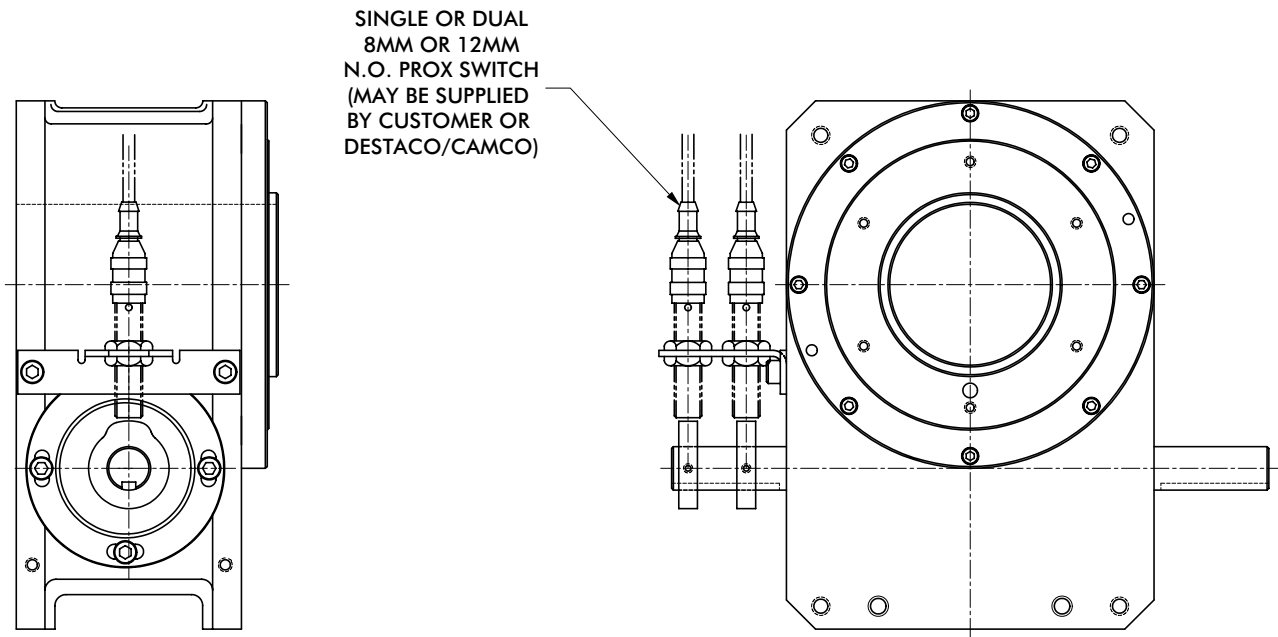
Rotary Index Drive | Dimensions



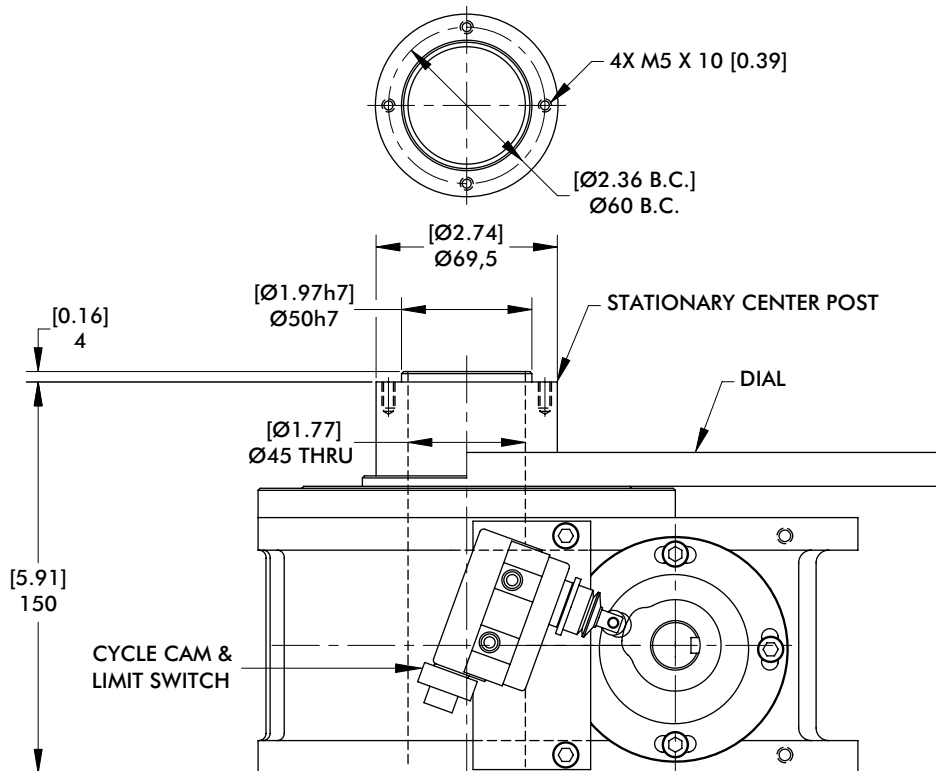
8ORDM SERIES

Rotary Index Drive | Product Overview | Technical Specifications

Proximity Switch



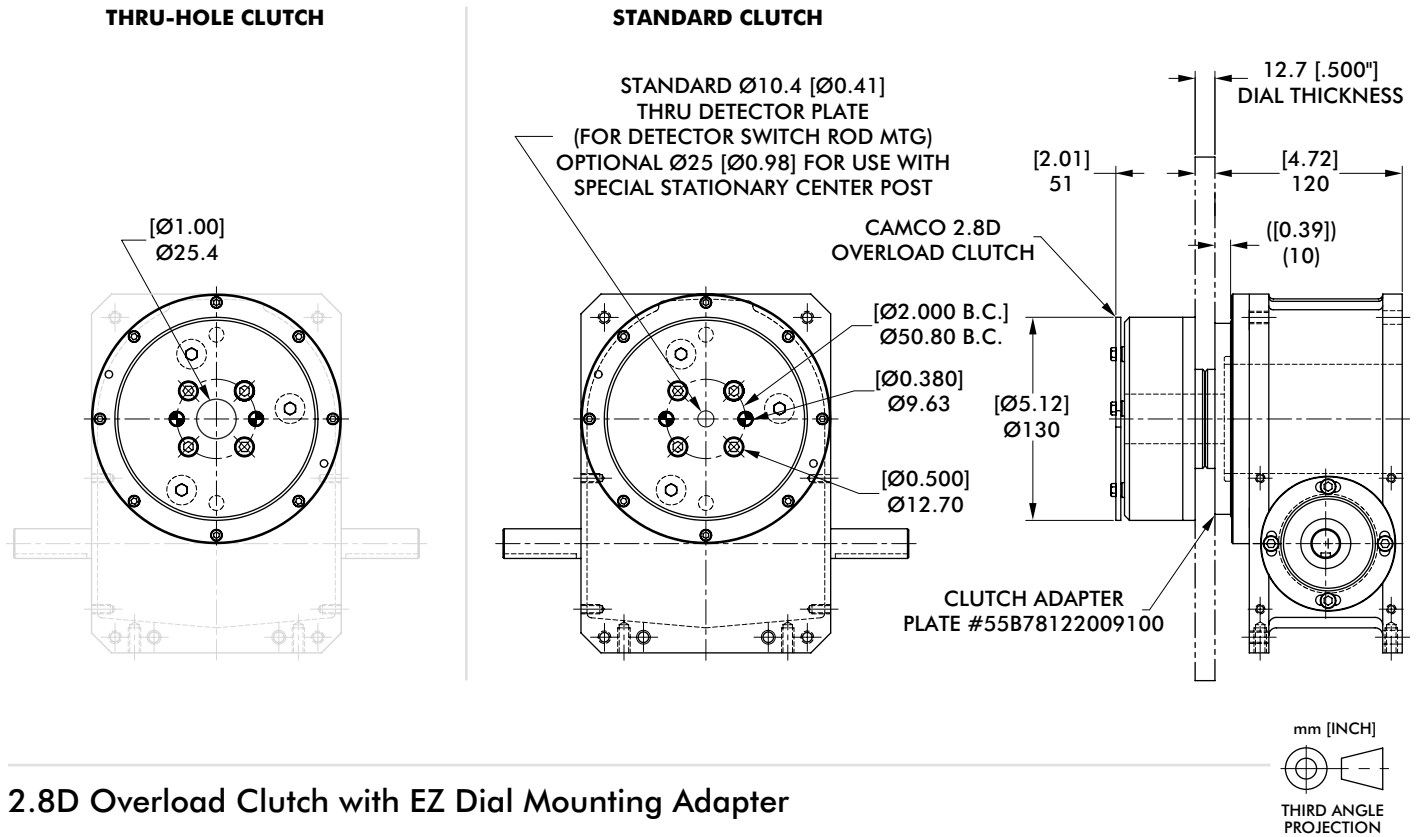
Center Post



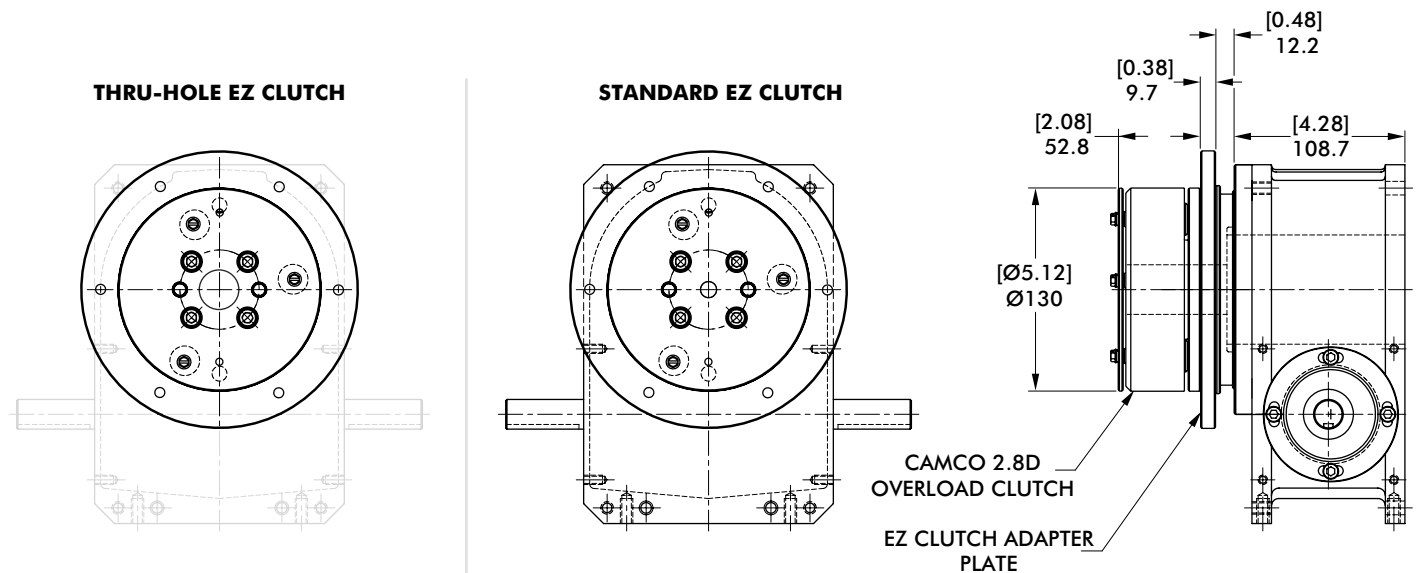
8ORDM SERIES

Rotary Index Drive | Dimensions

2.8D Overload Clutch



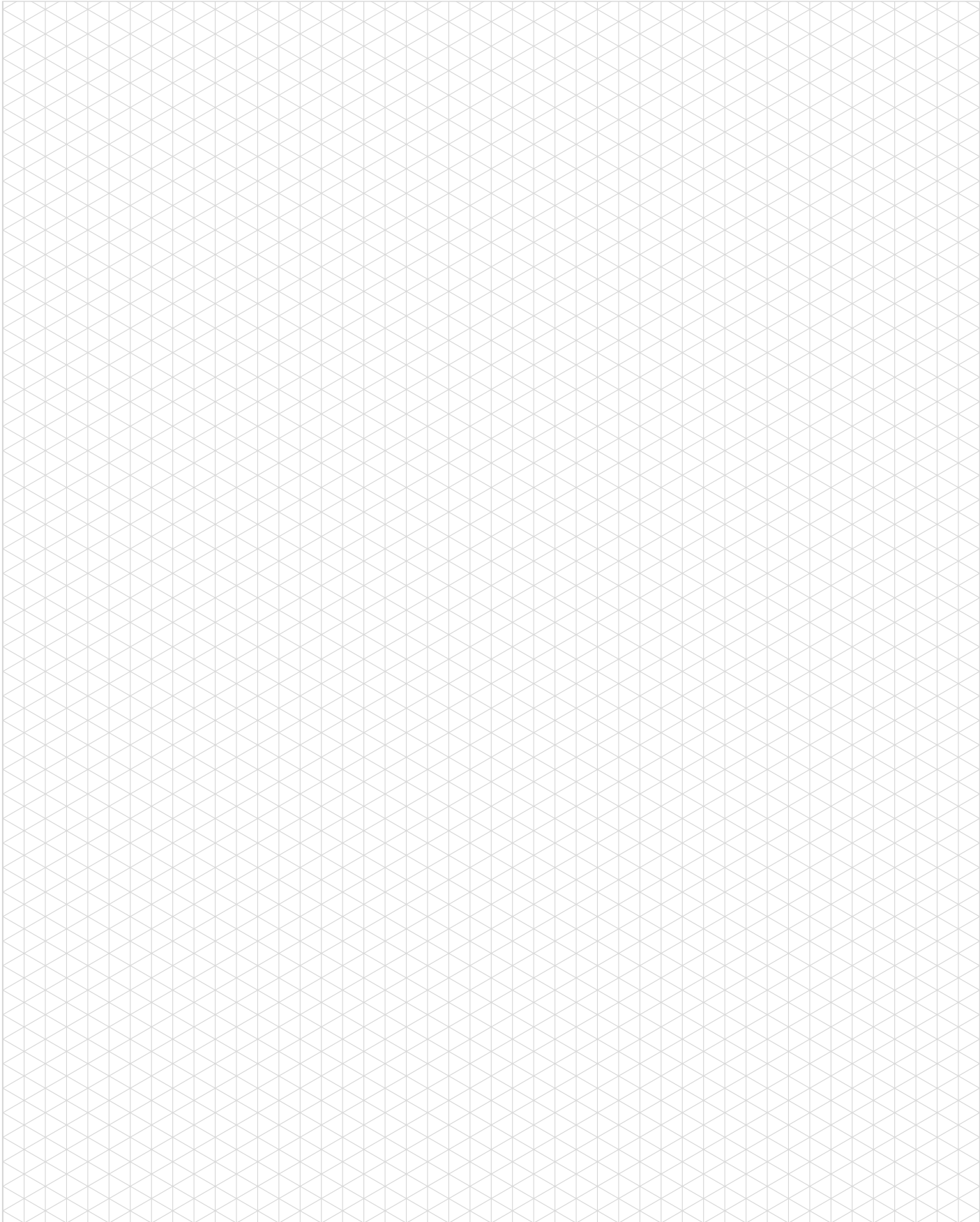
2.8D Overload Clutch with EZ Dial Mounting Adapter



Model	Internal Inertia kg-m ² [lb-in ²]	Torque Setting N-m [in-lb]
2.8D	0,0085 [29]	45, 54, 79, 96, 124, 147, 203, 249, 350 [400, 480, 700, 850, 1100, 1300, 1800, 2200, 3100]

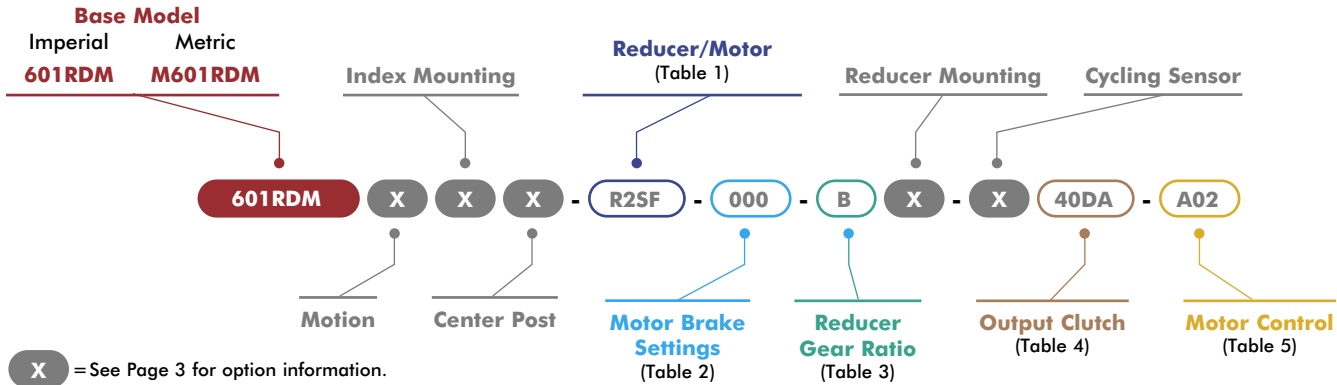
80RDM SERIES

Notes



601RDM SERIES

Rotary Index Drive | How To Order



1 Reducer/Motor Options

Code	Description
0000	No Reducer or Motor*
R180/R225 Motors	
R18X	R180 Adapter only*
R18A	R180 Reducer
R18B	R180 Reducer with 0.33HP 230/460V AC Motor
R18C	R180 Reducer with 0.33HP 90V DC Motor
R18D	R180 Reducer with 0.33HP 180V DC Motor
R2XX	R225 Adapter only*
R2SA	R225 Reducer 56 ADAPTER & CPLG, Single Extended Worm
R2SB	R225 Reducer 145TC ADAPTER & CPLG, Single Extended Worm (No Motor)
R2SC	R225 Reducer with 0.5HP 56C 230/460V AC Motor, Single Extended Worm
R2SD	R225 Reducer with 1.0HP 56C 230/460V AC Motor, Single Extended Worm
R2SE	R225 Reducer with 1.0HP 56C 90V DC Motor, Single Extended Worm
R2SF	R225 Reducer with 1.0HP 56C 180V DC Motor, Single Extended Worm
R2DA	R225 Reducer 56 ADAPTER & CPLG, Double Extended Worm
R2DB	R225 Reducer 145TC ADAPTER & CPLG, Double Extended Worm (No Motor)
R2DC	R225 Reducer with 0.5HP 56C 230/460V AC Motor, Double Extended Worm
R2DD	R225 Reducer with 1.0HP 56C 230/460V AC Motor, Double Extended Worm
R2DE	R225 Reducer with 1.0HP 56C 90V DC Motor, Double Extended Worm
R2DF	R225 Reducer with 1.0HP 56C 180V DC Motor, Double Extended Worm
SEW KH37 Motors	
SW1A	KH37 Adapter only*
SW1B	SEW KH37DRS71S4 0.25Kw Motor (60Hz, 230/460V)
SW1C	SEW KH37DRS71S4 0.25Kw Motor (50Hz, 400V)
SW1D	SEW KH37DRS71S4 0.25Kw Motor (60Hz, 575V)
SW1E	SEW KH37DRS71S4 0.37Kw Motor (60Hz, 230/460V)
SW1F	SEW KH37DRS71S4 0.37Kw Motor (50Hz, 400V)
SW1G	SEW KH37DRS71S4 0.37Kw Motor (60Hz, 575V)
STM RMI-40/50 Motors	
RM2A	STM RMI-40 Adapter only*
RM2B	STM RMI-40 IEC63-B14 Reducer
RM2C	STM RMI-40 IEC71-B14 Reducer
RM2D	STM RMI-40 Reducer w/ 0.18kW Motor
RM2E	STM RMI-40 Reducer w/ 0.25kW Motor
RM3A	STM RMI-50 Adapter only*
RM3B	STM RMI-50 IEC71-B14 Reducer
RM3C	STM RMI-50 IEC80-B14 Reducer
RM3D	STM RMI-50 Reducer w/ 0.37Kw Motor
RM3E	STM RMI-50 Reducer w/ 0.55kW Motor

*All Reducer/Motor adapters require Gear Ratio option to be 0.

2 Motor Brake

Code	Description
000	No Brake
S1A	1.69 Nm (BE05)
S1B	2.49 Nm (BE05)
S1C	3.50 Nm (BE05)
S2A	4.97 Nm (BE1)
S2B	7.01 Nm (BE1)
S2C	9.94 Nm (BE1)

*SEW Motor brake setting options only. All other motors use option code 000.

3 Reducer Gear Ratios*

Code	Description		
	R180/225	SEW KH37	STM RMI-40/50
0	N/A	N/A	N/A
A	10:1	10.49:1	10:1
B	15:1	15.31:1	15:1
C	20:1	20.19:1	20:1
D	25:1	29.96:1	28:1
E	30:1	37.97:1	40:1
F	40:1	49.79:1	49:1
G	50:1	58.60:1	56:1
H	60:1	67.80:1	70:1

*All Reducer/Motor adapters require Gear Ratio option to be 0.
Select Gear ratio column based on the reducer type selected.

4 Output Clutch & Settings

601RDM Imperial Clutch Models		M601RDM Metric Clutch Models	
Code	Description	Code	Description
0000	No Output Overload Clutch	0000	No Output Overload Clutch
40DA	4.0D/420 In-Lb, Standard*	M40DA	M4.0D/47 Nm, Standard*
40DB	4.0D/620 In-Lb, Standard*	M40DB	M4.0D/70 Nm, Standard*
40DC	4.0D/750 In-Lb, Standard*	M40DC	M4.0D/85 Nm, Standard*
40DD	4.0D/1150 In-Lb, Standard*	M40DD	M4.0D/130 Nm, Standard*
40DE	4.0D/1750 In-Lb, Standard*	M40DE	M4.0D/198 Nm, Standard*
40DF	4.0D/2950 In-Lb, Standard*	M40DF	M4.0D/333 Nm, Standard*
40DG	4.0D/4000 In-Lb, Standard*	M40DG	M4.0D/452 Nm, Standard*
40DH	4.0D/420 In-Lb, Thru-Hole	M40DH	M4.0D/47 Nm, Thru-Hole
40DJ	4.0D/620 In-Lb, Thru-Hole	M40DJ	M4.0D/70 Nm, Thru-Hole
40DK	4.0D/750 In-Lb, Thru-Hole	M40DK	M4.0D/85 Nm, Thru-Hole
40DL	4.0D/1150 In-Lb, Thru-Hole	M40DL	M4.0D/130 Nm, Thru-Hole
40DM	4.0D/1750 In-Lb, Thru-Hole	M40DM	M4.0D/198 Nm, Thru-Hole
40DN	4.0D/2950 In-Lb, Thru-Hole	M40DN	M4.0D/333 Nm, Thru-Hole
40DP	4.0D/4000 In-Lb, Thru-Hole	M40DP	M4.0D/452 Nm, Thru-Hole
40EA	4.0D/420 In-Lb, Standard, EZ*	M40EA	M4.0D/47 Nm, Standard, EZ*
40EB	4.0D/620 In-Lb, Standard, EZ*	M40EB	M4.0D/70 Nm, Standard, EZ*
40EC	4.0D/750 In-Lb, Standard, EZ*	M40EC	M4.0D/85 Nm, Standard, EZ*
40ED	4.0D/1150 In-Lb, Standard, EZ*	M40ED	M4.0D/130 Nm, Standard, EZ*
40EE	4.0D/1750 In-Lb, Standard, EZ*	M40EE	M4.0D/198 Nm, Standard, EZ*
40EF	4.0D/2950 In-Lb, Standard, EZ*	M40EF	M4.0D/333 Nm, Standard, EZ*
40EG	4.0D/4000 In-Lb, Standard, EZ*	M40EG	M4.0D/452 Nm, Standard, EZ*
40EH	4.0D/420 In-Lb, Thru-Hole, EZ	M40EH	M4.0D/47 Nm, Thru-Hole, EZ
40EJ	4.0D/620 In-Lb, Thru-Hole, EZ	M40EJ	M4.0D/70 Nm, Thru-Hole, EZ
40EK	4.0D/750 In-Lb, Thru-Hole, EZ	M40EK	M4.0D/85 Nm, Thru-Hole, EZ
40EL	4.0D/1150 In-Lb, Thru-Hole, EZ	M40EL	M4.0D/130 Nm, Thru-Hole, EZ
40EM	4.0D/1750 In-Lb, Thru-Hole, EZ	M40EM	M4.0D/198 Nm, Thru-Hole, EZ
40EN	4.0D/2950 In-Lb, Thru-Hole, EZ	M40EN	M4.0D/333 Nm, Thru-Hole, EZ
40EP	4.0D/4000 In-Lb, Thru-Hole, EZ	M40EP	M4.0D/452 Nm, Thru-Hole, EZ

*Cannot be used with center post option P.

5 Motor Control

Code	Description
000	NO MOTOR CONTROL
A01	120V 1Ph
A02	(AC) PowerFlex 523 1HP
A03	240V 1Ph
A04	480V 3Ph
A05	120V 1Ph
A06	(AC) PowerFlex 525 1HP
A07	240V 1Ph
A08	480V 3Ph
A09	240V 3Ph
A10	(AC) PowerFlex 525 2HP
D01	480V 3Ph
D02	(DC) Varipak 1HP 90VDC
D03	240V 3Ph
D04	(DC) Varipak 2HP 180VDC
	Uni-Directional
	Bi-Directional
	Uni-Directional
	Bi-Directional

Maximum Inertia x 1000 kg-cm ² [lb-in ²] for standard package							
Stops	Motion Time [seconds]						
	0.458	0.611	0.764	0.917	1.222	1.528	1.833
2	0 [0]	3 [1]	6 [2]	15 [5]	32 [11]	50 [17]	70 [24]
3	3 [1]	9 [3]	20 [7]	35 [12]	82 [28]	123 [42]	170 [58]
4	6 [2]	18 [6]	38 [13]	67 [23]	152 [52]	228 [78]	310 [106]
6	15 [5]	41 [14]	82 [28]	149 [51]	328 [112]	492 [168]	667 [228]
8	29 [10]	73 [25]	149 [51]	263 [90]	582 [199]	875 [299]	1188 [406]
12	64 [22]	167 [57]	337 [115]	597 [204]	1314 [449]	1399 [478]	1399 [478]
16	117 [40]	296 [101]	600 [205]	1056 [361]	1399 [478]	1399 [478]	1399 [478]
Reducer Ratio							
	15	20	25	30	40	50	60

Other Motions (stops and index periods) available. Contact your DESTACO sales representative for more information.

Features

- R180 Reducer (Ratios from 15:1 to 60:1)
 - Double Extended Worm Shaft (Input)
 - Worm Shaft Handwheel
- Double Extended Camshaft (Input Shaft)
- Center Thru Hole (Ø44,45 [Ø1.75 in.])
- 1/3 HP AC Drive Package with Inverter Duty Motor and IM-pAC AC Drive (up to 60 cpm)
- Cycle Cam and Limit Switch Mounted to Camshaft
- Right Hand Cam

Output Load Capacity (loads carried during index):

Radial	4204 N [945 lbs]
Thrust/Axial	10498 N [2360 lbs]
Moment	373 N-m [3305 in-lb]

Typical Application Dial Diameter:

305 mm [12 in] to 914 mm [36 in]

Accuracy

±39 arcsec / ±0,08 mm [±.003in]
at 457,2 mm [18in] Radius

Repeatability

±10 arcsec / ±0,023 mm [±.0009in]
at 457,2 mm [18in] Radius

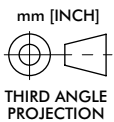
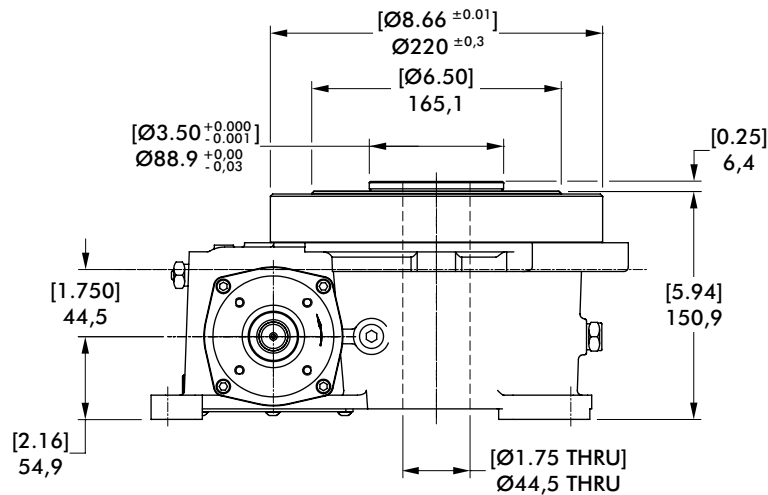
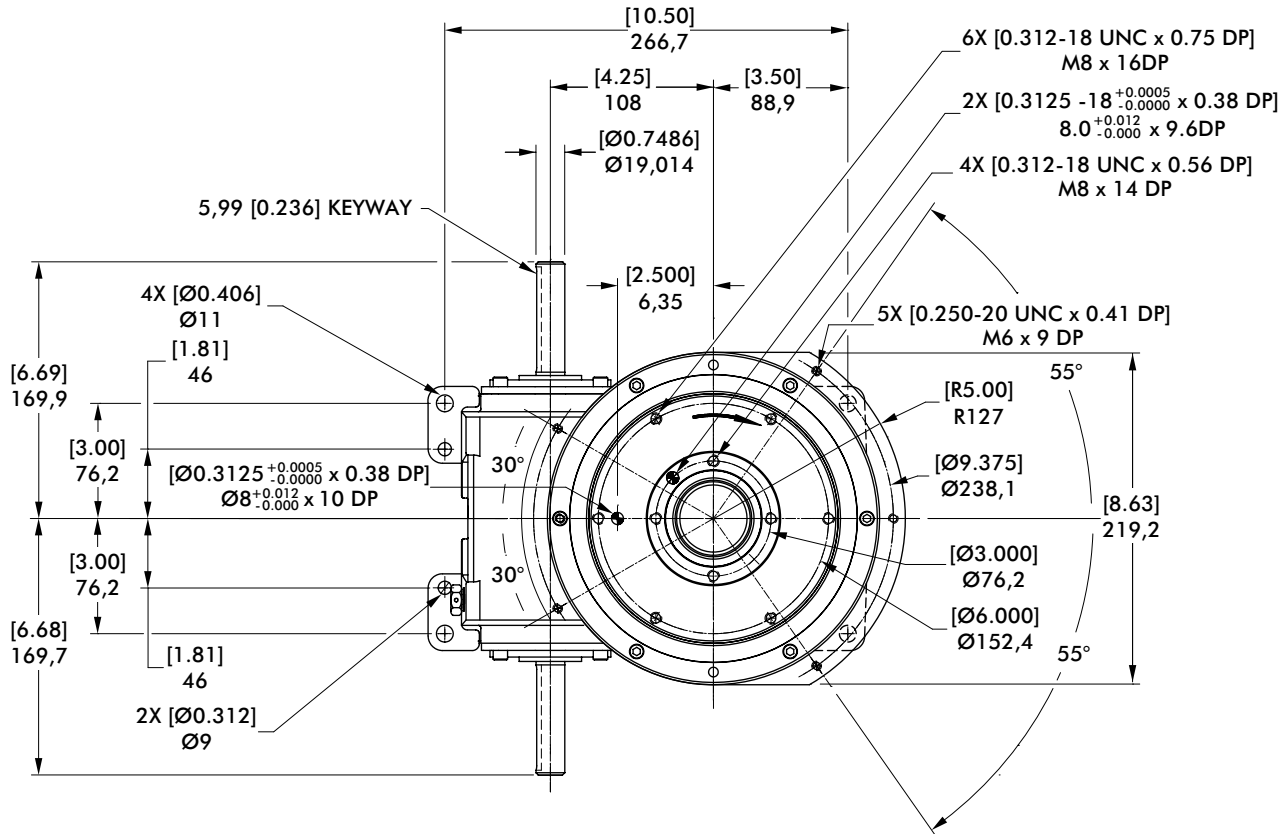
Optional Accessories

- 1/3 hp DC Motor
- Varipak DC Motor Control (up to 30 cpm)
- Output Mechanical Overload Clutch
 - See Page 15
- EZ Mount Dial Adapter
- Stationary Center Post
- Dual Cam and Limit Switch
- Relief in Dwell for shot-pin applications
- Left Hand Cam



601RDM SERIES

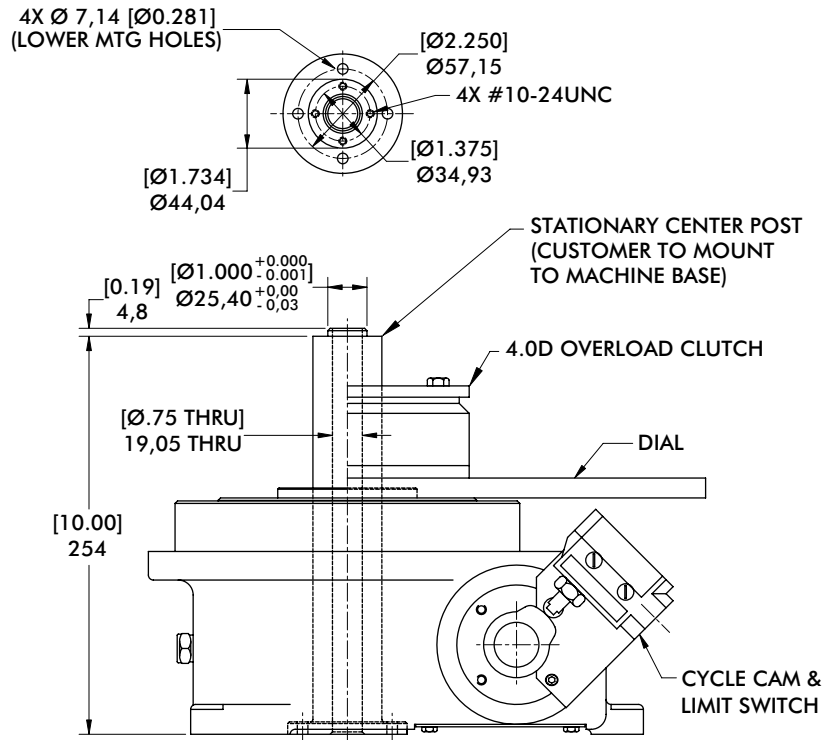
Rotary Index Drive | Dimensions



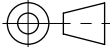
601RDM SERIES

Rotary Index Drive | Dimensions

Proximity Switch

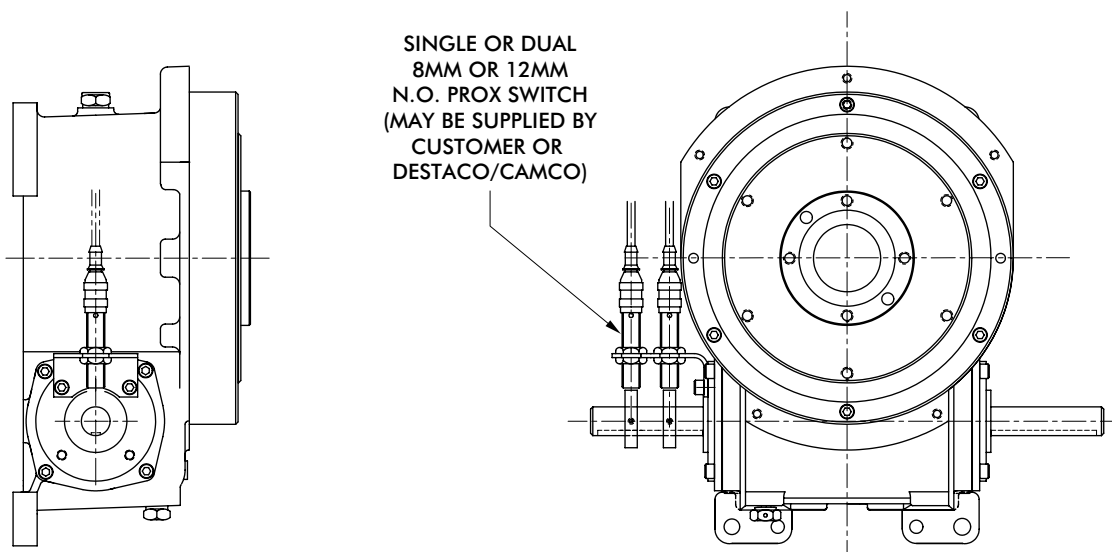


mm [INCH]



THIRD ANGLE
PROJECTION

Center Post

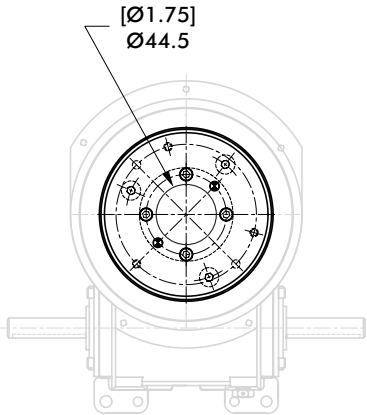


601RDM SERIES

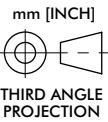
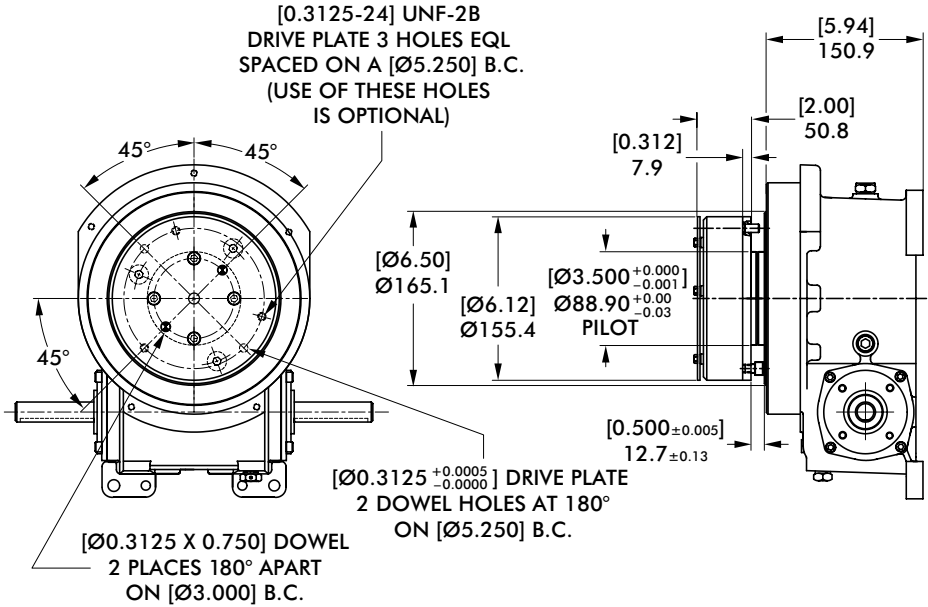
Rotary Index Drive | Dimensions

4.0D Overload Clutch

THRU-HOLE CLUTCH



STANDARD CLUTCH

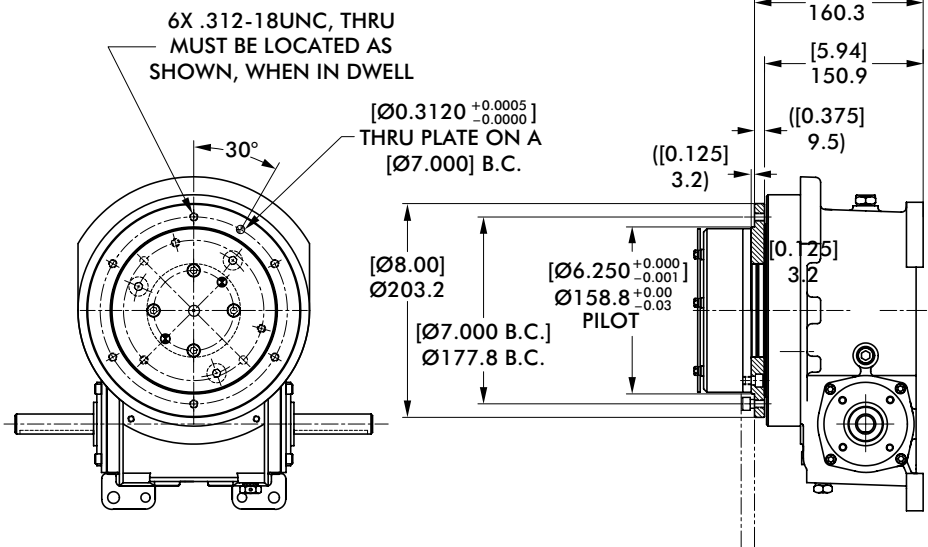


4.0D Overload Clutch with EZ Dial Mounting Adapter

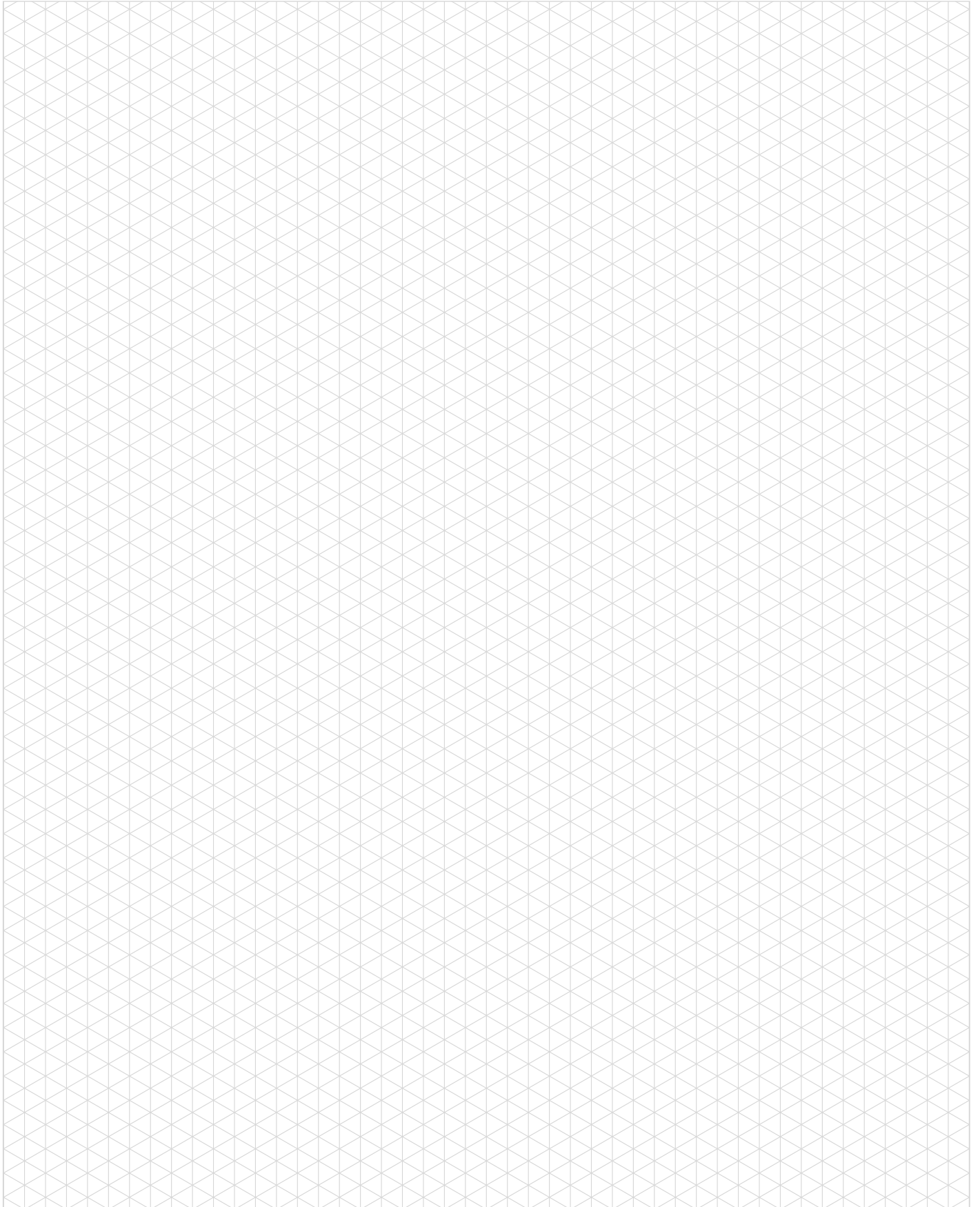
THRU-HOLE EZ CLUTCH



STANDARD EZ CLUTCH

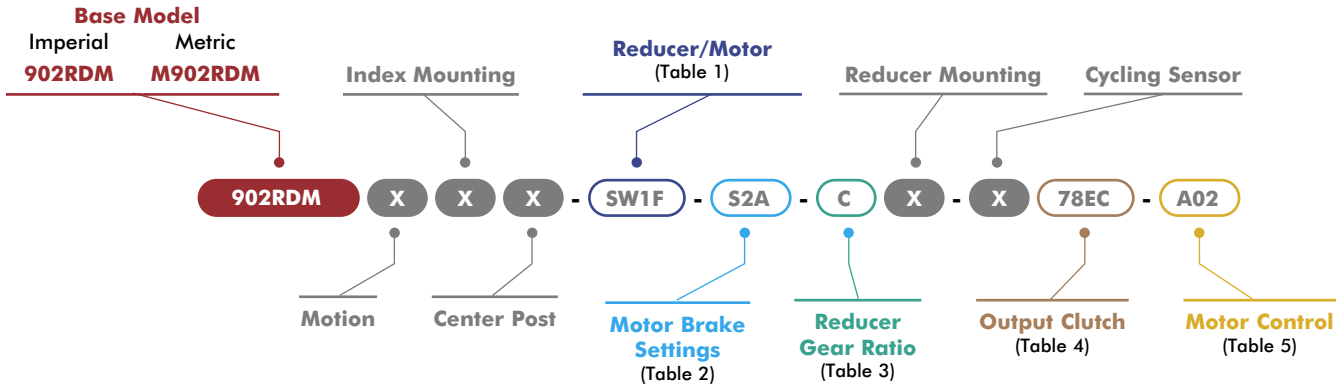


Model	Internal Inertia kg-m ² [lb-in ²]	Torque Setting N-m [in-lb]
4.0D	0,0202 [69]	47, 70, 85, 130, 198, 333, 452 [420, 620, 750, 1150, 1750, 2950, 4000]



902RDM SERIES

Rotary Index Drive | How To Order



X = See Page 3 for option information.

1 Reducer/Motor Options

Code	Description
0000	No Reducer or Motor*
R225 Motors	
R2XX	R225 Adapter only*
R2SA	R225 Reducer 56 ADAPTER & CPLG, Single Extended Worm
R2SB	R225 Reducer 145TC ADAPTER & CPLG, Single Extended Worm (No Motor)
R25C	R225 Reducer with 0.5HP 56C 230/460V AC Motor, Single Extended Worm
R2SD	R225 Reducer with 1.0HP 56C 230/460V AC Motor, Single Extended Worm
R2SE	R225 Reducer with 1.0HP 56C 90V DC Motor, Single Extended Worm
R25F	R225 Reducer with 1.0HP 56C 180V DC Motor, Single Extended Worm
R2DA	R225 Reducer 56 ADAPTER & CPLG, Double Extended Worm
R2DB	R225 Reducer 145TC ADAPTER & CPLG, Double Extended Worm (No Motor)
R2DC	R225 Reducer with 0.5HP 56C 230/460V AC Motor, Double Extended Worm
R2DD	R225 Reducer with 1.0HP 56C 230/460V AC Motor, Double Extended Worm
R2DE	R225 Reducer with 1.0HP 56C 90V DC Motor, Double Extended Worm
R2DF	R225 Reducer with 1.0HP 56C 180V DC Motor, Double Extended Worm
SEW KH37 Motors	
SW1E	KH37 Adapter only*
SW1F	SEW KH37DRN80M4/.75Kw Motor/Brake Motor (60Hz, 230/460V)
SW1G	SEW KH37DRN80M4/.75Kw Motor/Brake Motor (50Hz, 400V)
SW1H	SEW KH37DRN80M4/.75Kw Motor/Brake Motor (60Hz, 575V)
SW1J	SEW KH37DRN90L4/1.5Kw Motor/Brake Motor (60Hz, 230/460V)
SW1K	SEW KH37DRN90L4/1.5Kw Motor/Brake Motor (50Hz, 400V)
SW1L	SEW KH37DRN90L4/1.5Kw Motor/Brake Motor (60Hz, 575V)
STM RMI-63/70 Motors	
RM4A	STM RMI-63 Adapter only*
RM4B	STM RMI-63 IEC80-B14 Reducer
RM4C	STM RMI-63 IEC90-B14 Reducer
RM4D	STM RMI-63 Reducer with .75kW Motor
RM4E	STM RMI-63 Reducer with 1.5kW Motor
RM5A	STM RMI-70 Adapter only*
RM5B	STM RMI-70 IEC80-B14 Reducer
RM5C	STM RMI-70 IEC90-B14 Reducer
RM5D	STM RMI-70 Reducer with .75kW Motor
RM5E	STM RMI-70 Reducer with 1.5kW Motor

*All Reducer/Motor adapters require Gear Ratio option to be 0.

2 Motor Brake*

Code	Description
000	No Brake
S1A	1.69 Nm (BE05)
S1B	2.49 Nm (BE05)
S1C	3.50 Nm (BE05)
S2A	4.97 Nm (BE1)
S2B	7.01 Nm (BE1)
S2C	9.94 Nm (BE1)
S3A	9.94 Nm (BE2)
S3B	14.01 Nm (BE2)
S3C	20.00 Nm (BE2)

*SEW Motor brake setting options only. All other motors use option code 000.

3 Reducer Gear Ratios*

Code	Description	R225	SEW KH37	STM RMI-63/70
0	N/A	N/A	N/A	N/A
A	10:1	10.49:1	10:1	
B	15:1	15.31:1	15:1	
C	20:1	20.19:1	20:1	
D	25:1	29.96:1	28:1	
E	30:1	37.97:1	40:1	
F	40:1	49.79:1	49:1	
G	50:1	58.60:1	56:1	
H	60:1	67.80:1	70:1	

*All Reducer/Motor adapters require Gear Ratio option to be 0.
Select Gear ratio column based on the reducer type selected.

4 Output Clutch & Settings

902RDM Imperial Clutch Models		M902RDM Metric Clutch Models	
Code	Description	Code	Description
0000	No Output Overload Clutch	0000	No Output Overload Clutch
78DA	7.8D/3200 In-Lb, Standard*	M78DA	M7.8D/360 Nm, Standard*
78DB	7.8D/7200 In-Lb, Standard*	M78DB	M7.8D/815 Nm, Standard*
78DC	7.8D/10000 In-Lb, Standard*	M78DC	M7.8D/1130 Nm, Standard*
78DD	7.8D/1400 In-Lb, Standard*	M78DD	M7.8D/160 Nm, Standard*
78DE	7.8D/1700 In-Lb, Standard*	M78DE	M7.8D/192 Nm, Standard*
78DF	7.8D/2600 In-Lb, Standard*	M78DF	M7.8D/295 Nm, Standard*
78DG	7.8D/4200 In-Lb, Standard*	M78DG	M7.8D/475 Nm, Standard*
78DH	7.8D/5000 In-Lb, Standard*	M78DH	M7.8D/566 Nm, Standard*
78DJ	7.8D/3200 In-Lb, Thru-Hole	M78DJ	M7.8D/360 Nm, Thru-Hole
78DK	7.8D/7200 In-Lb, Thru-Hole	M78DK	M7.8D/815 Nm, Thru-Hole
78DL	7.8D/10000 In-Lb, Thru-Hole	M78DL	M7.8D/1130 Nm, Thru-Hole
78DM	7.8D/1400 In-Lb, Thru-Hole	M78DM	M7.8D/160 Nm, Thru-Hole
78DN	7.8D/1700 In-Lb, Thru-Hole	M78DN	M7.8D/192 Nm, Thru-Hole
78DP	7.8D/2600 In-Lb, Thru-Hole	M78DP	M7.8D/295 Nm, Thru-Hole
78DQ	7.8D/4200 In-Lb, Thru-Hole	M78DQ	M7.8D/475 Nm, Thru-Hole
78DR	7.8D/5000 In-Lb, Thru-Hole	M78DR	M7.8D/566 Nm, Thru-Hole
78EA	7.8D/3200 In-Lb, Standard, EZ*	M78EA	M7.8D/360 Nm, Standard, EZ*
78EB	7.8D/7200 In-Lb, Standard, EZ*	M78EB	M7.8D/815 Nm, Standard, EZ*
78EC	7.8D/10000 In-Lb, Standard, EZ*	M78EC	M7.8D/1130 Nm, Standard, EZ*
78ED	7.8D/1400 In-Lb, Standard, EZ*	M78ED	M7.8D/160 Nm, Standard, EZ*
78EE	7.8D/1700 In-Lb, Standard, EZ*	M78EE	M7.8D/192 Nm, Standard, EZ*
78EF	7.8D/2600 In-Lb, Standard, EZ*	M78EF	M7.8D/295 Nm, Standard, EZ*
78EG	7.8D/4200 In-Lb, Standard, EZ*	M78EG	M7.8D/475 Nm, Standard, EZ*
78EH	7.8D/5000 In-Lb, Standard, EZ*	M78EH	M7.8D/566 Nm, Standard, EZ*
78EJ	7.8D/3200 In-Lb, Thru-Hole, EZ	M78EJ	M7.8D/360 Nm, Thru-Hole, EZ
78EK	7.8D/7200 In-Lb, Thru-Hole, EZ	M78EK	M7.8D/815 Nm, Thru-Hole, EZ
78EL	7.8D/10000 In-Lb, Thru-Hole, EZ	M78EL	M7.8D/1130 Nm, Thru-Hole, EZ
78EM	7.8D/1400 In-Lb, Thru-Hole, EZ	M78EM	M7.8D/160 Nm, Thru-Hole, EZ
78EN	7.8D/1700 In-Lb, Thru-Hole, EZ	M78EN	M7.8D/192 Nm, Thru-Hole, EZ
78EP	7.8D/2600 In-Lb, Thru-Hole, EZ	M78EP	M7.8D/295 Nm, Thru-Hole, EZ
78EQ	7.8D/4200 In-Lb, Thru-Hole, EZ	M78EQ	M7.8D/475 Nm, Thru-Hole, EZ
78ER	7.8D/5000 In-Lb, Thru-Hole, EZ	M78ER	M7.8D/566 Nm, Thru-Hole, EZ

*Cannot be used with center post options P and B.

5 Motor Control

Code	Description
000	NO MOTOR CONTROL
A01	120V 1Ph
A02	(AC) PowerFlex 523 1HP
A03	240V 1Ph
A04	480V 3Ph
A05	120V 1Ph
A06	(AC) PowerFlex 525 1HP
A07	240V 1Ph
A08	480V 3Ph
A09	(AC) PowerFlex 523 2HP
A10	240V 3Ph
A11	(AC) PowerFlex 525 2HP
A12	480V 3Ph
D01	Uni-Directional
D02	(DC) Varipak 1HP 90VDC
D03	Bi-Directional
D04	(DC) Varipak 2HP 180VDC
D05	Uni-Directional
D06	Bi-Directional

Maximum Inertia x 1000 kg-cm ² [lb-in ²] for standard package							
Stops	Motion Time [seconds]						
	0.458	0.611	0.764	0.917	1.222	1.528	1.833
2	3 [1]	9 [3]	20 [7]	35 [12]	76 [26]	117 [40]	161 [55]
3	12 [4]	32 [11]	67 [23]	120 [41]	246 [84]	369 [126]	509 [174]
4	23 [8]	59 [20]	120 [41]	214 [73]	439 [150]	661 [226]	907 [310]
6	53 [18]	129 [44]	263 [90]	462 [158]	945 [323]	1419 [485]	1952 [667]
8	94 [32]	234 [80]	468 [160]	825 [282]	1683 [575]	2528 [864]	3474 [1187]
12	214 [73]	530 [181]	989 [338]	1425 [487]	2531 [865]	3956 [1352]	5701 [1948]
16	380 [130]	916 [313]	1481 [506]	2130 [728]	3790 [1295]	5923 [2024]	8528 [2914]
Reducer Ratio							
	15	20	25	30	40	50	60

Other Motions (stops and index periods) available. Contact your DESTACO sales representative for more information.

Features

- R225 Reducer (Ratios from 15:1 to 60:1)
- Single Extended wormshaft (Standard)
- Double Extended Camshaft (Input Shaft)
- Center Thru Hole (Ø57,15 mm [Ø2.25 in.])
- 1 HP AC Drive Package with Inverter Duty Motor and IM-pAC AC Drive (up to 60 cpm)
- Cycle Cam and Limit Switch Mounted to Camshaft
- Right Hand Cam

Output Load Capacity (loads carried during index):

Radial	15747 N [3540 lbs]
Thrust/Axial	31138 N [7000 lbs]
Moment	2443 N-m [21620 in-lb]

Typical Application Dial Diameter:

508 mm [20 in] to 1219 mm [48 in]

Accuracy

±27 arcsec / ±0,08 mm [±.003in]
at 609,6 mm [24in] Radius

Repeatability

±7 arcsec / ±0,020 mm [±.0008in]
at 609,6 mm [24in] Radius

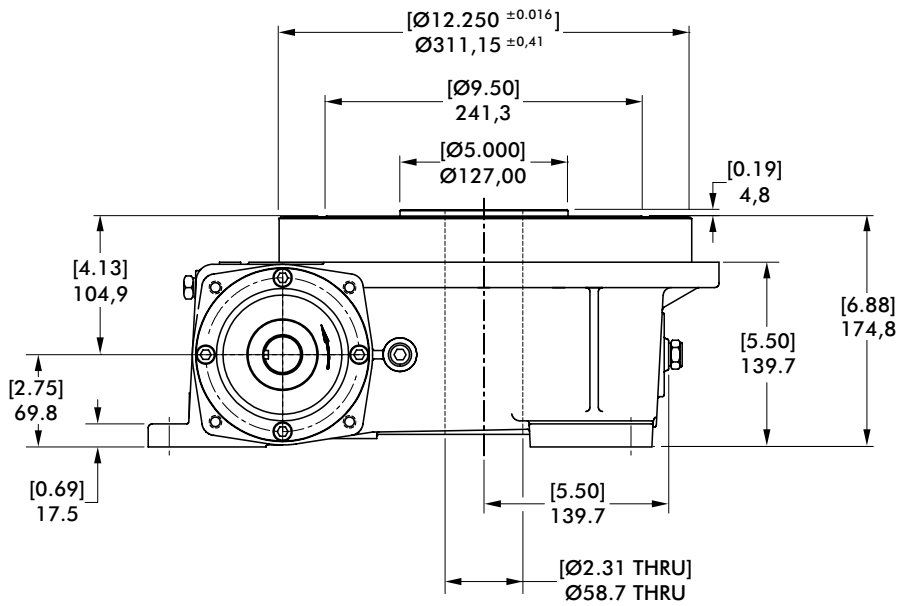
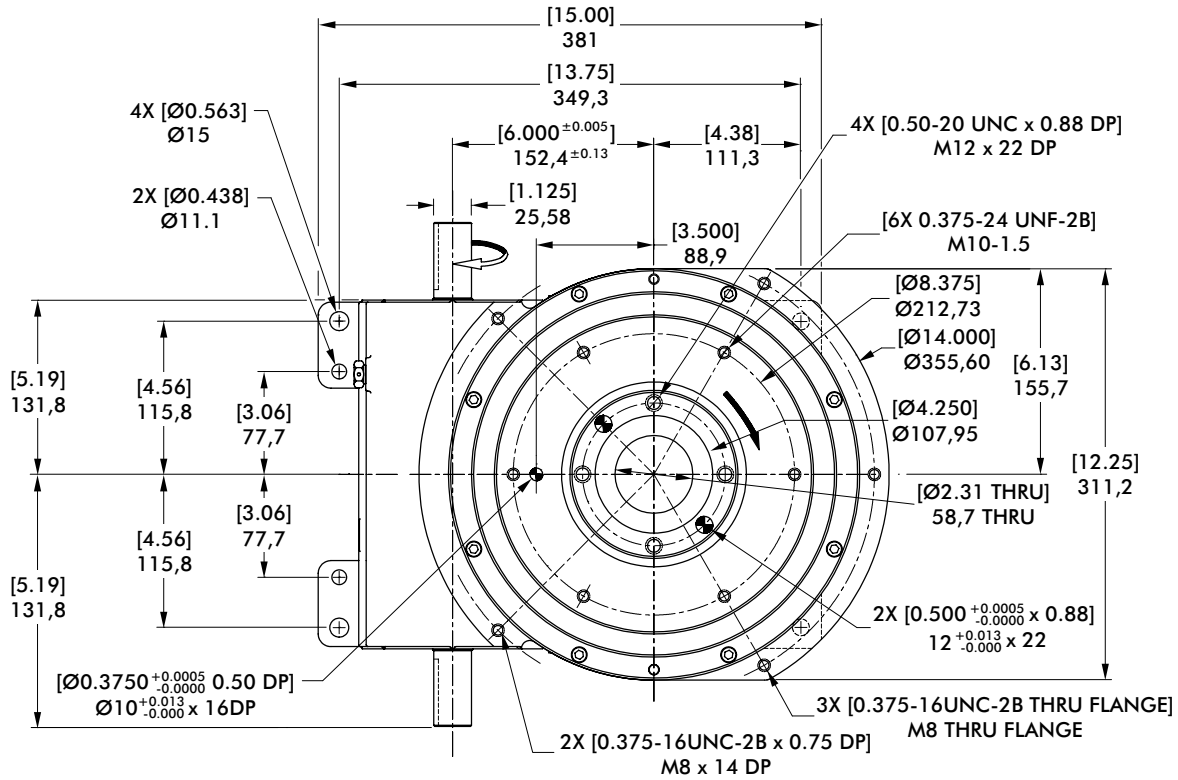
Optional Accessories

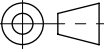
- 1 hp DC Motor
- Varipak DC Motor Control (up to 30 cpm)
- Output Mechanical Overload Clutch
– See Page 21
- EZ Mount Dial Adapter
- Stationary Center Post
- Dual Cam and Limit Switch
- Base Riser Blocks
- Electric Clutch-Brake
- Left Hand Cam
- Relief in Dwell for shot-pin applications



902RDM SERIES

Rotary Index Drive | Dimensions

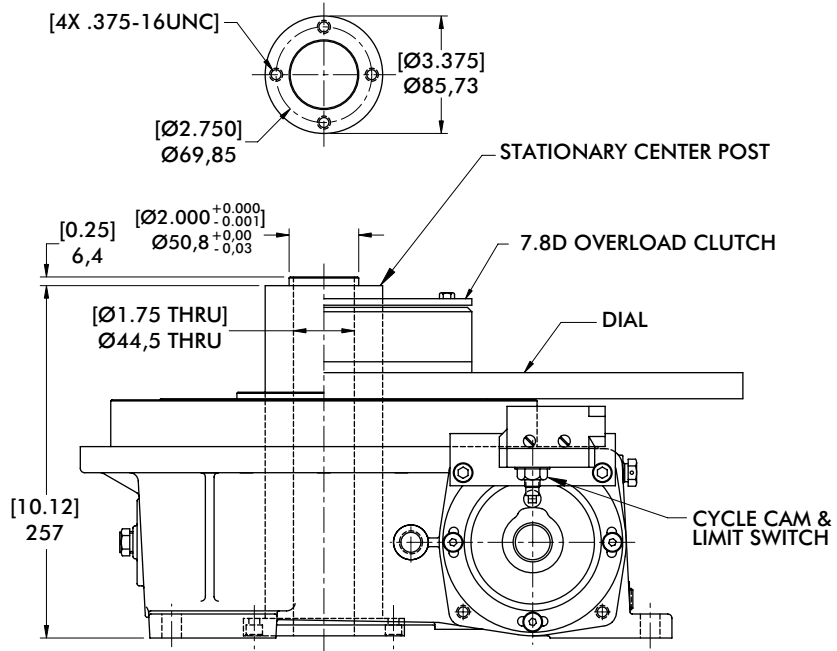


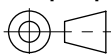
mm [INCH]

THIRD ANGLE
PROJECTION

902RDM SERIES

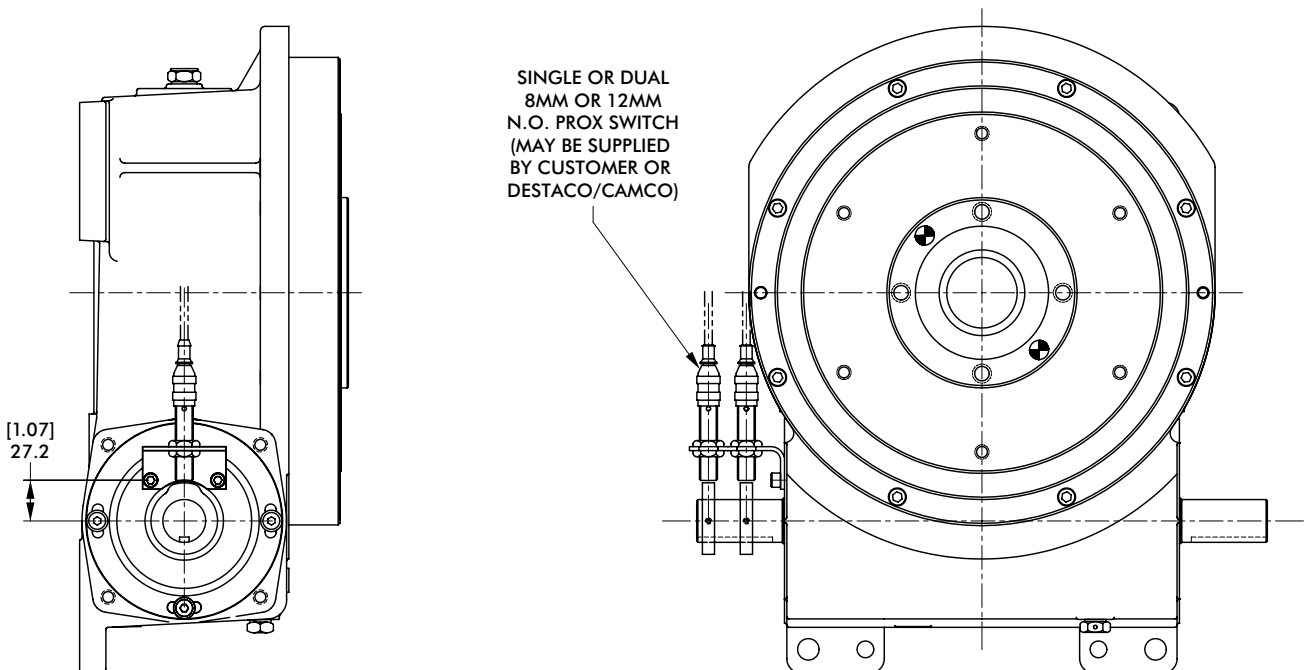
Rotary Index Drive | Product Overview | Technical Specifications

Center Post



mm [INCH]

 THIRD ANGLE
 PROJECTION

Proximity Switch

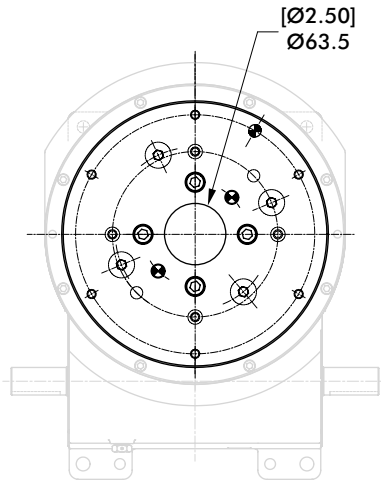


902RDM SERIES

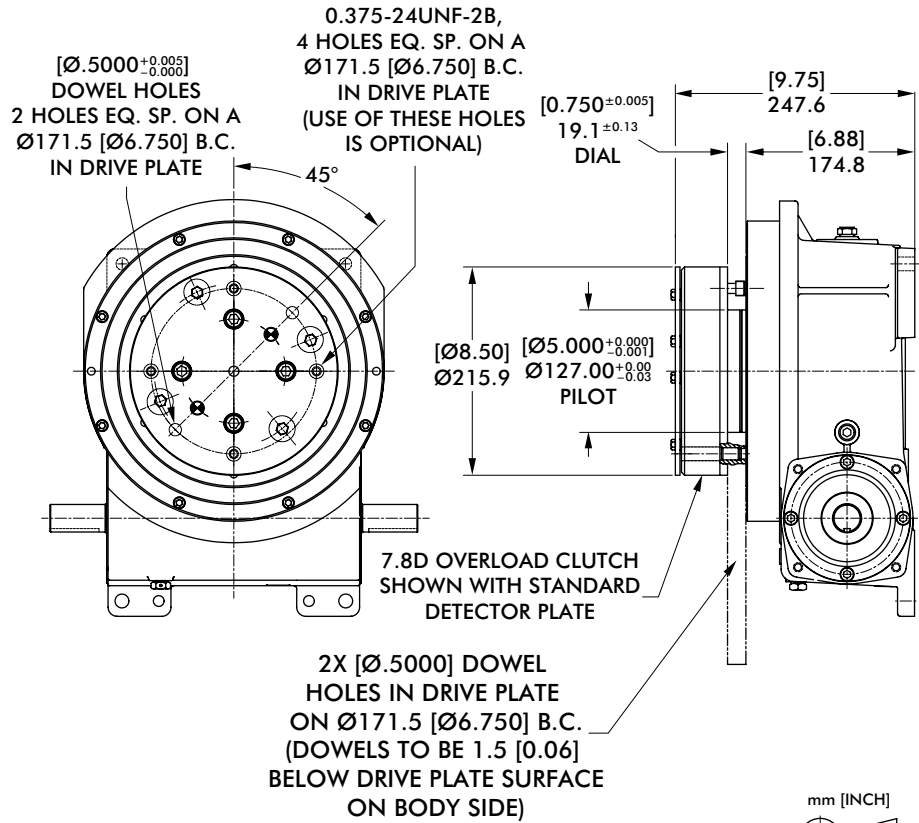
Rotary Index Drive | Dimensions

7.8D Overload Clutch

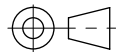
THRU-HOLE CLUTCH



STANDARD CLUTCH



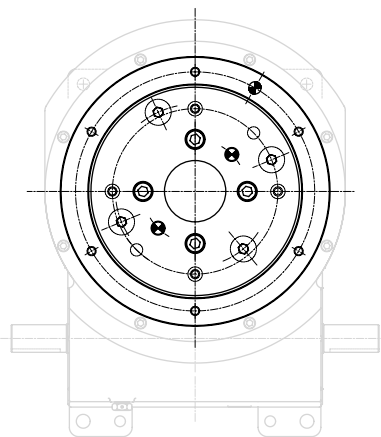
mm [INCH]



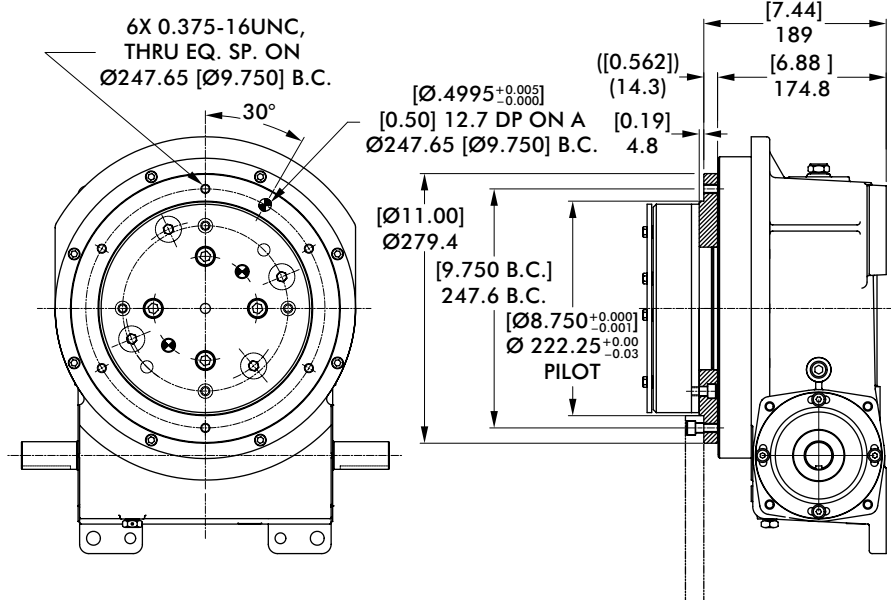
THIRD ANGLE
PROJECTION

7.8D Overload Clutch with EZ Dial Mounting Adapter

THRU-HOLE EZ CLUTCH



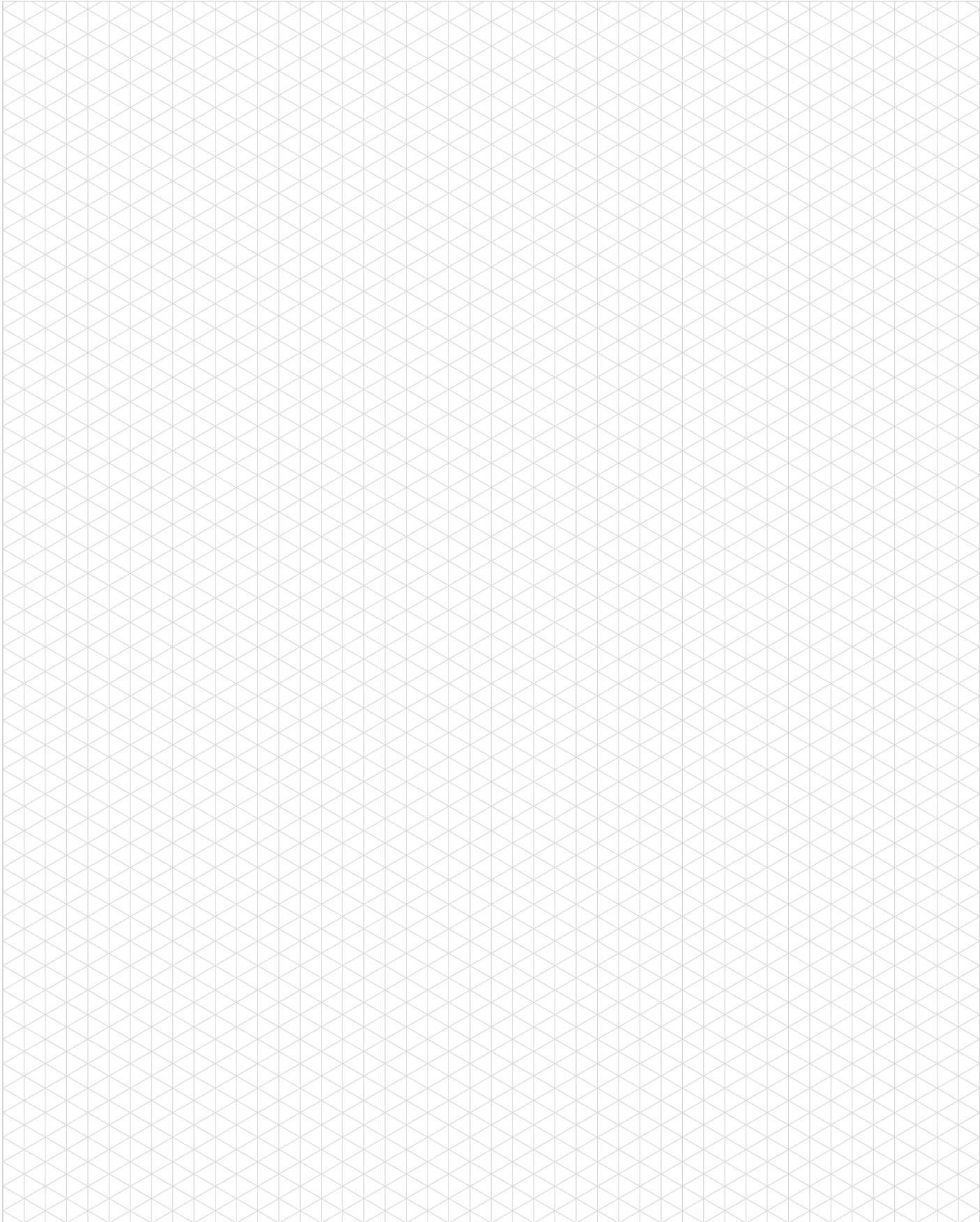
STANDARD EZ CLUTCH



Model	Internal Inertia kg-m ² [lb-in ²]	Torque Setting N-m [in-lb]
7.8D	0,0778 [266]	158, 192, 294, 362, 475, 565, 813, 1130 [1400, 1700, 2600, 3200, 4200, 5000, 7200, 10000]

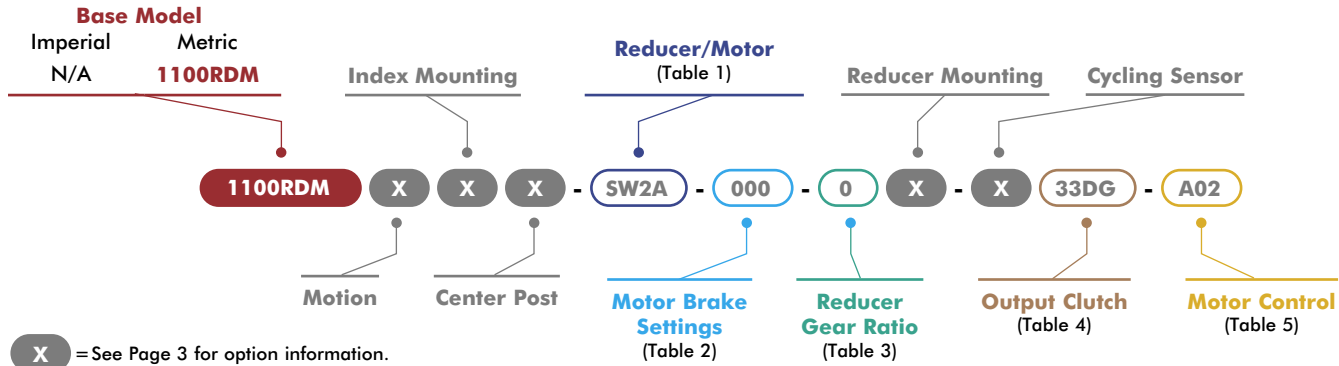
902RDM SERIES

Notes



1100RDM SERIES

Rotary Index Drive | How To Order



1 Reducer/Motor Options

Code	Description
0000	No Reducer or Motor*
7300C Motors	
CD1A	Indexer with 7300C Adapter*
CS1B	CONE DRIVE 7300C W/56C Reducer, SE Worm
CS1C	CONE DRIVE 7300C W/145TC Reducer, SE Worm
CS1D	CONE DRIVE 7300C Reducer w/ 1.0HP AC 56C Motor, SE Worm
CS1E	CONE DRIVE 7300C Reducer w/ 2.0HP AC 145TC Motor, SE Worm
CS1F	CONE DRIVE 7300C Reducer w/ 1.0HP 90V DC 56C Motor, SE Worm
CS1G	CONE DRIVE 7300C Reducer w/1.0HP 180V DC 56C Motor, SE Worm
CS1H	CONE DRIVE 7300C Reducer w/ 2.0HP 180V DC 143TC Motor, SE Worm
CD1B	CONE DRIVE 7300C w/ 56C Reducer, DE Worm
CD1C	CONE DRIVE 7300C W/145TC Reducer, DE Worm
CD1D	CONE DRIVE 7300C Reducer w/ 1.0HP AC 56C Motor, DE Worm
CD1E	CONE DRIVE 7300C Reducer w/ 2.0HP AC 145TC Motor, DE Worm
CD1F	CONE DRIVE 7300C Reducer w/ 1.0HP 90V DC 56C Motor, DE Worm
CD1G	CONE DRIVE 7300C Reducer w/ 1.0HP 180V DC 56C Motor, DE Worm
CD1H	CONE DRIVE 7300C Reducer w/ 2.0HP 180V DC 143TC Motor, DE Worm
SEW KH47 Motors	
SW2A	Indexer with KH47 Adapter*
SW2B	SEW KH47DRN80M4/.75Kw Motor/Brake Motor (60Hz, 230/460V)
SW2C	SEW KH47DRN80M4/.75Kw Motor/Brake Motor (50Hz, 200/400V)
SW2D	SEW KH47DRN80M4/.75Kw Motor/Brake Motor (60Hz, 575V)
SW2E	SEW KH47DRN90L4/1.5Kw Motor/Brake Motor (60Hz, 230/460V)
SW2F	SEW KH47DRN90L4/1.5Kw Motor/Brake Motor (50Hz, 200/400V)
SEW KH57 Motors	
SW3A	Indexer with KH57 Adapter*
SW3B	SEW KH57DRN80M4/.75Kw Motor/Brake Motor (60Hz, 230/460V)
SW3C	SEW KH57DRN80M4/.75Kw Motor/Brake Motor (50Hz, 200/400V)
SW3D	SEW KH57DRN80M4/.75Kw Motor/Brake Motor (60Hz, 575V)
SW3E	SEW KH57DRN90L4/1.5Kw Motor/Brake Motor (60Hz, 230/460V)
SW3F	SEW KH57DRN90L4/1.5Kw Motor/Brake Motor (50Hz, 200/400V)
SW3G	SEW KH57DRN90L4/1.5Kw Motor/Brake Motor (60Hz, 575V)
STM RMI-85 Motors	
RM6A	Indexer with RMI-85 Adapter*
RM6B	STM RMI-85/LFB/IEC90-B14 Reducer only
RM6C	STM RMI-85/LFB/IEC100-B14 Reducer only
RM6D	STM RMI-85/LFB/1.1kW Reducer and Motor
RM6E	STM RMI-85/LFB/2.2kW Reducer and Motor

*All Reducer/Motor adapters require Gear Ratio option to be 0.

2 Motor Brake* 3 Reducer Gear Ratios*

Code	Description	Code	Description			
000	No Brake					
S1A	1.69 Nm (BE05)					
S1B	2.49 Nm (BE05)					
S1C	3.50 Nm (BE05)					
S2A	4.97 Nm (BE1)					
S2B	7.01 Nm (BE1)					
S2C	9.94 Nm (BE1)					
S3A	9.94 Nm (BE2)					
S3B	14.01 Nm (BE2)					
S3C	20.00 Nm (BE2)					
S4A	20.00 Nm (BE5)					
S4B	28.02 Nm (BE5)					
S4C	40.00 Nm (BE5)					
S4D	55.03 Nm (BE5)					
			7300C	SEW KH47	SEW KH57	STM RMI-85
			0	N/A	N/A	N/A
			A	10:1	10.56:1	9.59:1
			B	15:1	15.86:1	15.22:1
			C	20:1	19.58:1	19.34:1
			D	25:1	29.32:1	30.28:1
			E	30:1	39.61:1	38.49:1
			F	40:1	48.95:1	48.89:1
			G	50:1	63.30:1	60.81:1
			H	60:1	69.84:1	69.12:1

*All Reducer/Motor adapters require Gear Ratio option to be 0.
Select Gear ratio column based on the reducer type selected.

*SEW Motor brake setting options only. All other motors use option code 000.

4 Output Clutch & Settings

Code	Description
0000	No Output Overload Clutch
33DA	33D/960 Nm, Standard Clutch*
33DB	33D/1470 Nm, Standard Clutch*
33DC	33D/1865 Nm, Standard Clutch*
33DD	33D/2260 Nm, Standard Clutch*
33DE	33D/2655 Nm, Standard Clutch*
33DF	33D/2880 Nm, Standard Clutch*
33DG	33D/3500 Nm, Standard Clutch*
33DH	33D/960 Nm, Thru-Hole Clutch
33DJ	33D/1470 Nm, Thru-Hole Clutch
33DK	33D/1865 Nm, Thru-Hole Clutch
33DL	33D/2260 Nm, Thru-Hole Clutch
33DM	33D/2655 Nm, Thru-Hole Clutch
33DN	33D/2880 Nm, Thru-Hole Clutch
33DP	33D/3500 Nm, Thru-Hole Clutch
33EA	33D/960 Nm, Standard Clutch, EZ*
33EB	33D/1470 Nm, Standard Clutch, EZ*
33EC	33D/1865 Nm, Standard Clutch, EZ*
33ED	33D/2260 Nm, Standard Clutch, EZ*
33EE	33D/2655 Nm, Standard Clutch, EZ*
33EF	33D/2880 Nm, Standard Clutch, EZ*
33EG	33D/3500 Nm, Standard Clutch, EZ*
33EH	33D/960 Nm, Thru-Hole Clutch, EZ
33EJ	33D/1470 Nm, Thru-Hole Clutch, EZ
33EK	33D/1865 Nm, Thru-Hole Clutch, EZ
33EL	33D/2260 Nm, Thru-Hole Clutch, EZ
33EM	33D/2655 Nm, Thru-Hole Clutch, EZ
33EN	33D/2880 Nm, Thru-Hole Clutch, EZ
33EP	33D/3500 Nm, Thru-Hole Clutch, EZ

* Cannot be used with center post options P and B.

5 Motor Control

Code	Description
000	NO MOTOR CONTROL
A01	120V 1Ph
A02	(AC) PowerFlex 523 1HP
A03	480V 3Ph
A04	120V 1Ph
A05	(AC) PowerFlex 525 1HP
A06	240V 1Ph
A07	480V 3Ph
A08	(AC) PowerFlex 523 2HP
A09	240V 3Ph
A10	(AC) PowerFlex 525 2HP
A11	480V 3Ph
A12	(AC) PowerFlex 523 3HP
A13	240V 1Ph
A14	(AC) PowerFlex 525 3HP
A15	480V 3Ph
A16	(AC) PowerFlex 523 5HP
A17	600V 3Ph
A18	(AC) PowerFlex 525 5HP
D01	600V 3Ph
D02	(DC) Varipak 1HP 90VDC
D03	Uni-Directional
D04	(DC) Varipak 2HP 180VDC
D05	Bi-Directional
	(DC) Cycletrol 3HP 180VDC
	Bi-Directional

Maximum Inertia x 1000 kg-cm ² [lb-in ²] for standard package							
Stops	Motion Time [seconds]						
	0.458	0.611	0.764	0.917	1.222	1.528	1.833
2	3 [1]	15 [5]	32 [11]	64 [22]	176 [60]	342 [117]	518 [177]
3	18 [6]	38 [13]	79 [27]	152 [52]	401 [137]	775 [265]	1171 [400]
4	38 [13]	79 [27]	161 [55]	304 [104]	790 [270]	1525 [521]	2297 [785]
6	88 [30]	179 [61]	351 [120]	664 [227]	1703 [582]	3283 [1122]	4940 [1688]
8	161 [55]	325 [111]	632 [216]	1185 [405]	3035 [1037]	5838 [1995]	7916 [2705]
12	369 [126]	735 [251]	1428 [488]	2672 [913]	6833 [2335]	12563 [4293]	16932 [5786]
16	658 [225]	1314 [449]	2543 [869]	4138 [1414]	7781 [2659]	11884 [4061]	16019 [5474]
Reducer Ratio							
	15.86	19.58	24.06	29.32	39.61	48.95	56.83

Other Motions (stops and index periods) available. Contact your DESTACO sales representative for more information.

Features

- KH47 Reducer and AC Motor with Optional Brake
- Double Extended Camshaft (Input Shaft)
- Center Thru Hole (Ø130 mm [Ø5.1 in.])
- AC drive package with Inverter Duty Motor and Inverter Drive (up to 60 cpm)
- Cycle Cam and Limit Switch Mounted to Camshaft
- Right Hand Cam

Output Load Capacity (loads carried during index):

Radial	13789 N [3100 lbs]
Thrust/Axial	35586 N [8000 lbs]
Moment	3240 N-m [28674 in-lb]

Typical Application Dial Diameter:

508 mm [20 in] to 1524 mm [60 in]

Accuracy

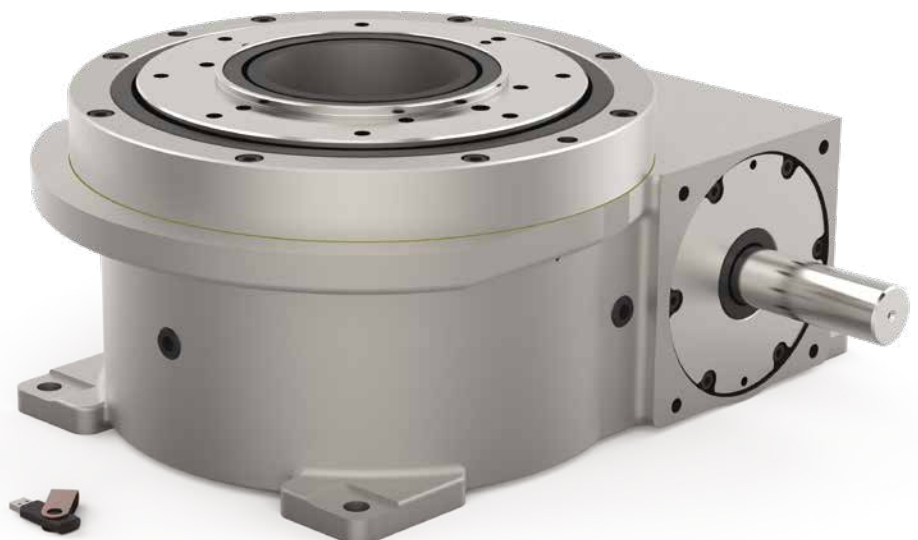
±22 arcsec / ±0,08 mm [±.003in]
at 76 mm [30in] Radius

Repeatability

±5 arcsec / ±0,020 mm [±.0008in]
at 762 mm [30in] Radius

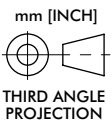
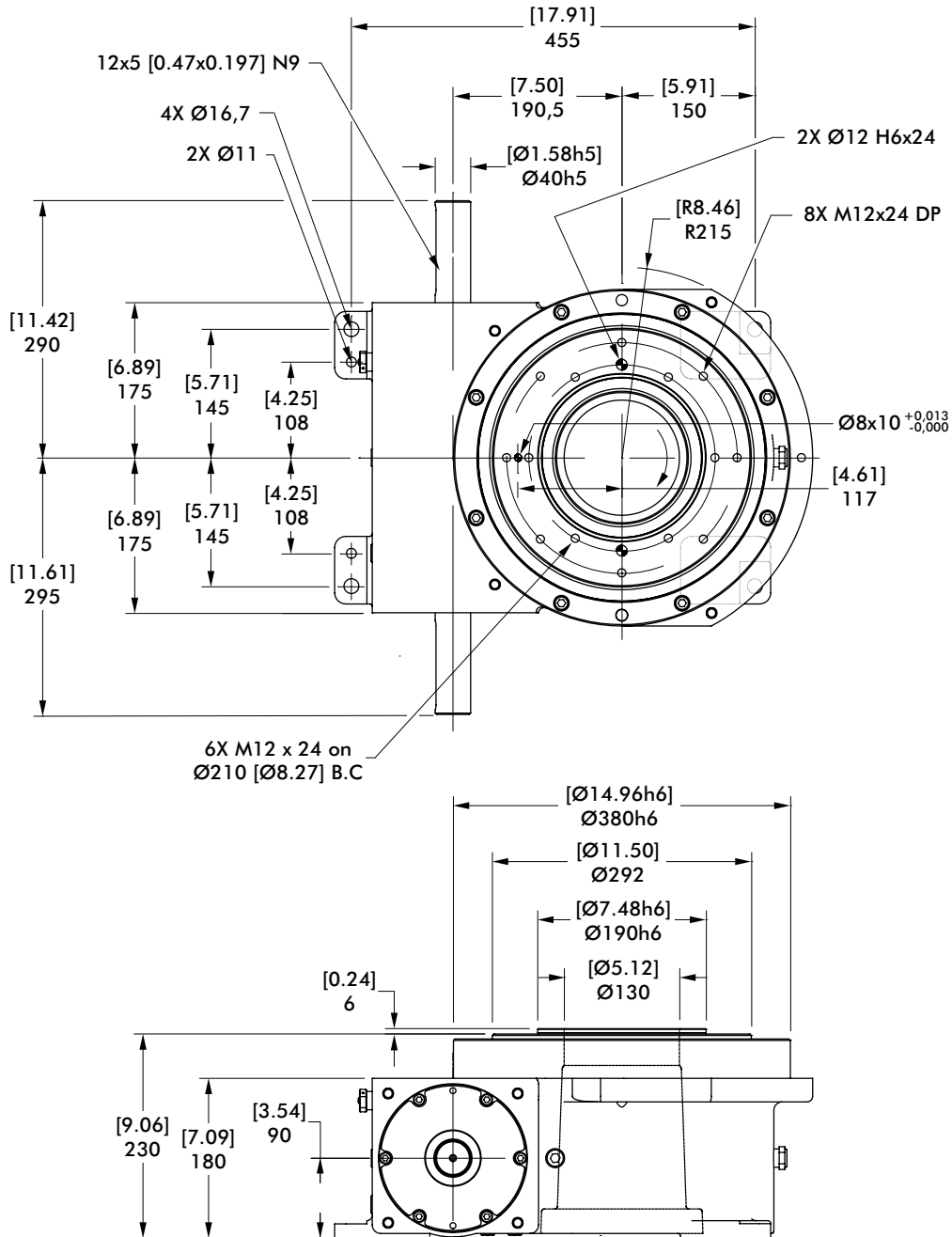
Optional Accessories

- 7300C Reducer (Ratios from 15:1 to 60:1)
- 1.5 HP DC motor
- Varipak DC Motor Control (up to 30 cpm)
- Output Mechanical Overload Clutch
– See Page 27
- EZ Mount Dial Adapter
- 7350C Heavy Duty Reducer (Ratios from 10:1 to 60:1)
- Stationary Center Post
- Dual Cam and Limit Switch
- Left Hand Cam
- Relief in Dwell for shot-pin applications



1100RDM SERIES

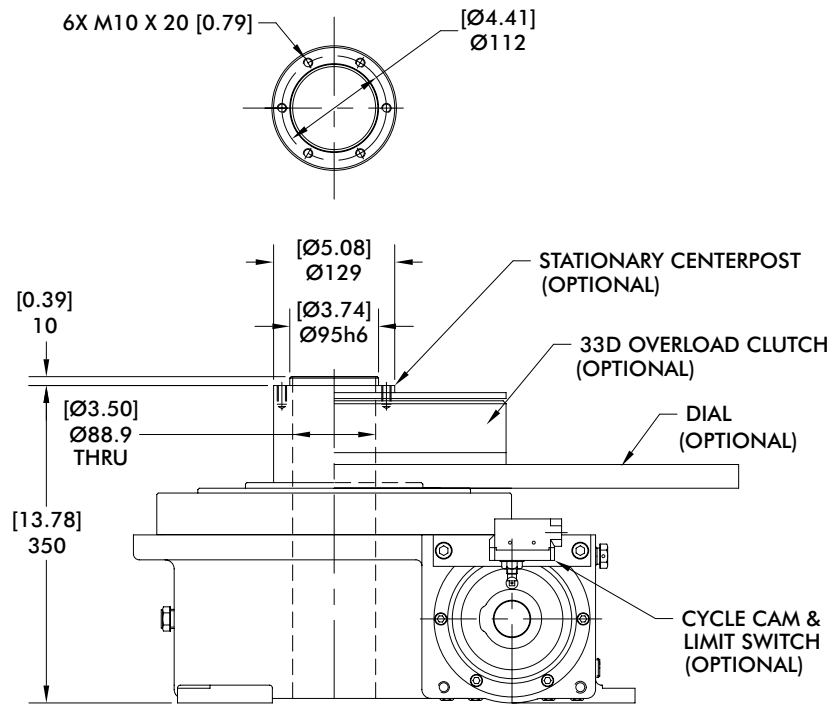
Rotary Index Drive | Dimensions



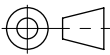
1100RDM SERIES

Rotary Index Drive | Product Overview | Technical Specifications

Center Post

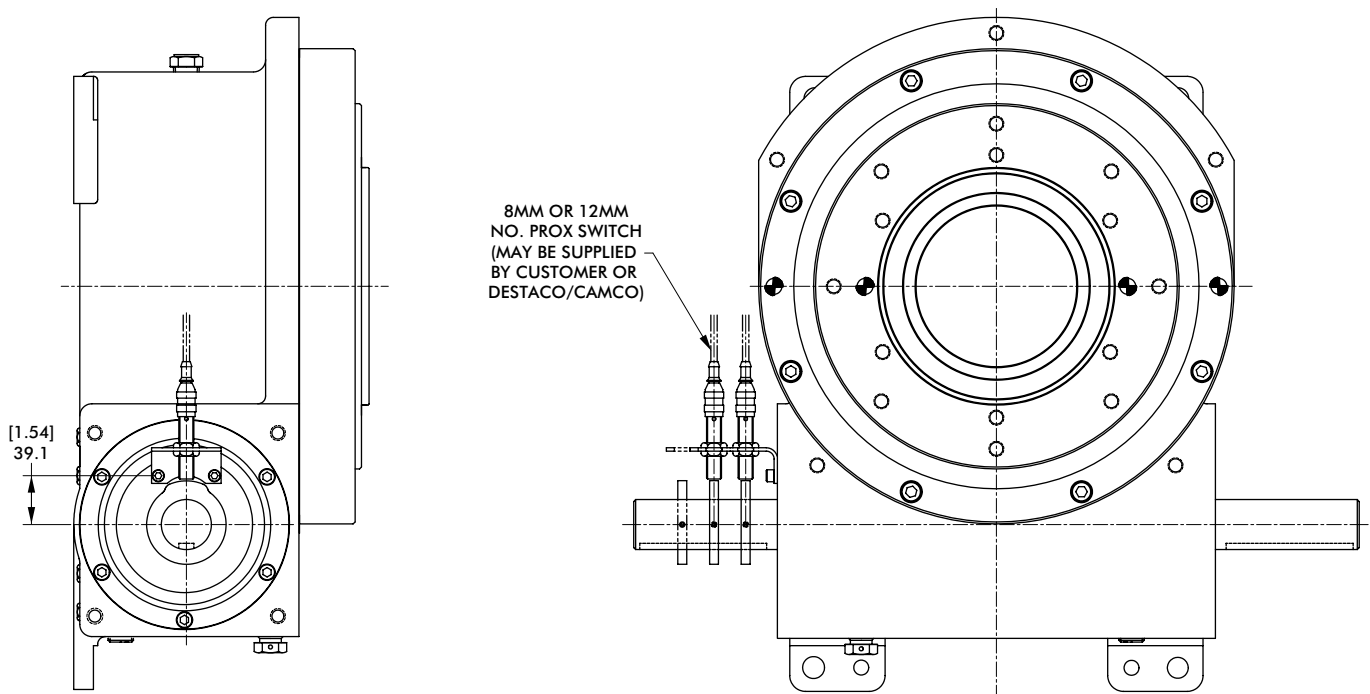


mm [INCH]



THIRD ANGLE PROJECTION

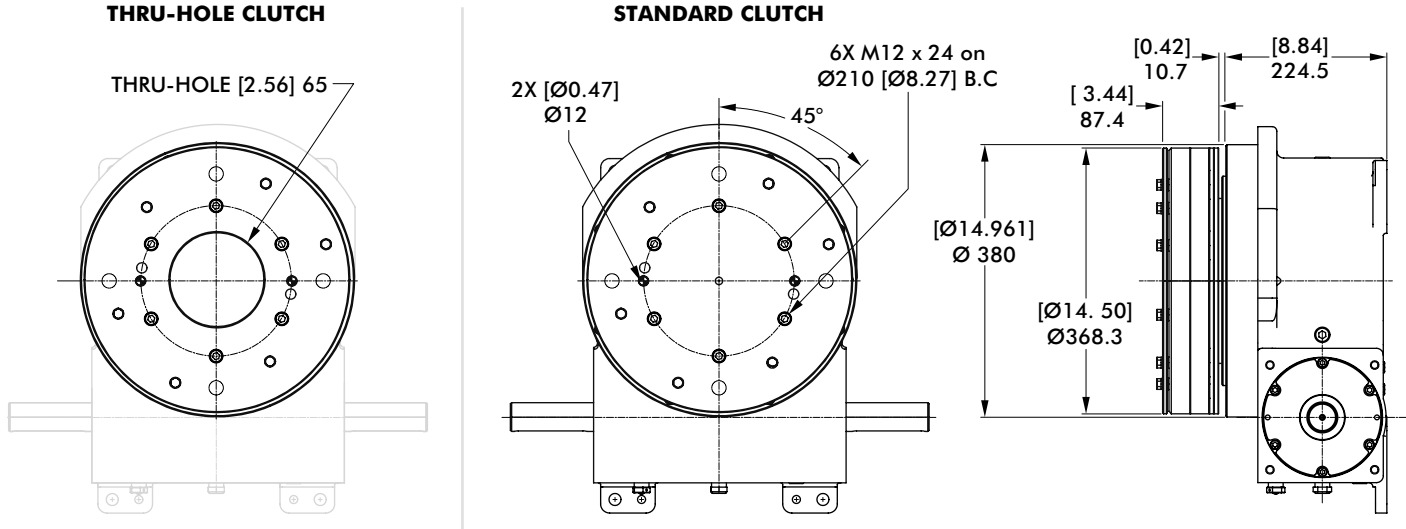
Proximity Switch



1100RDM SERIES

Rotary Index Drive | Dimensions

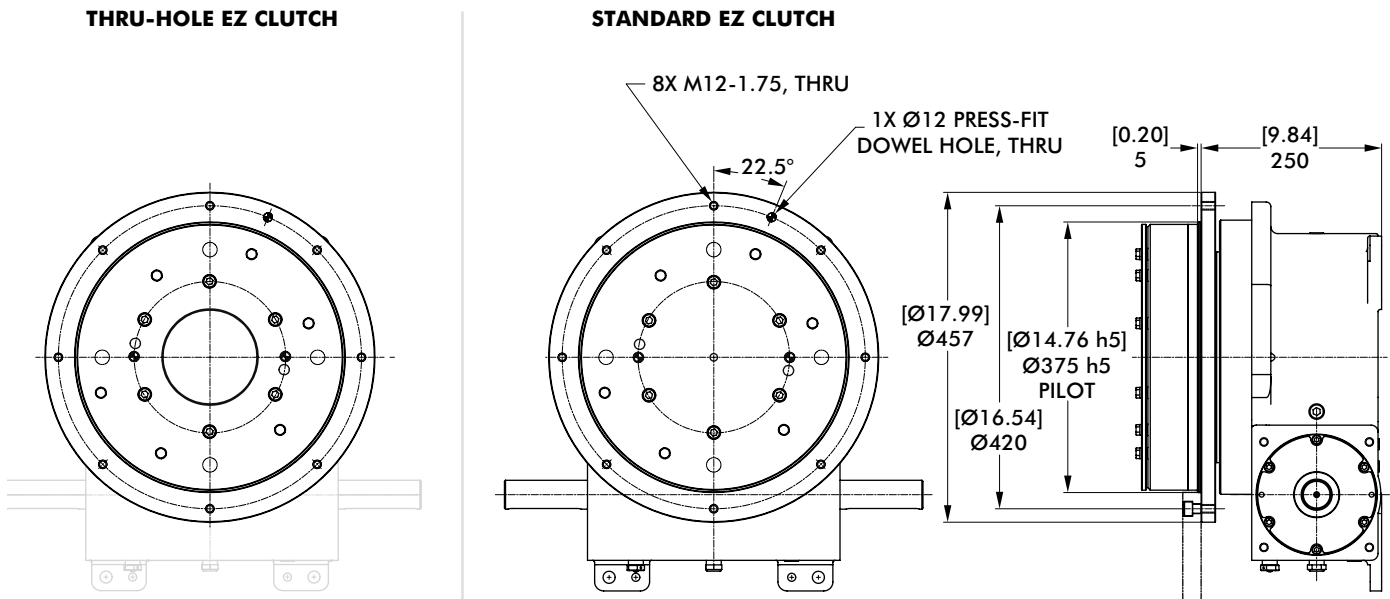
33D Overload Clutch



mm [INCH]



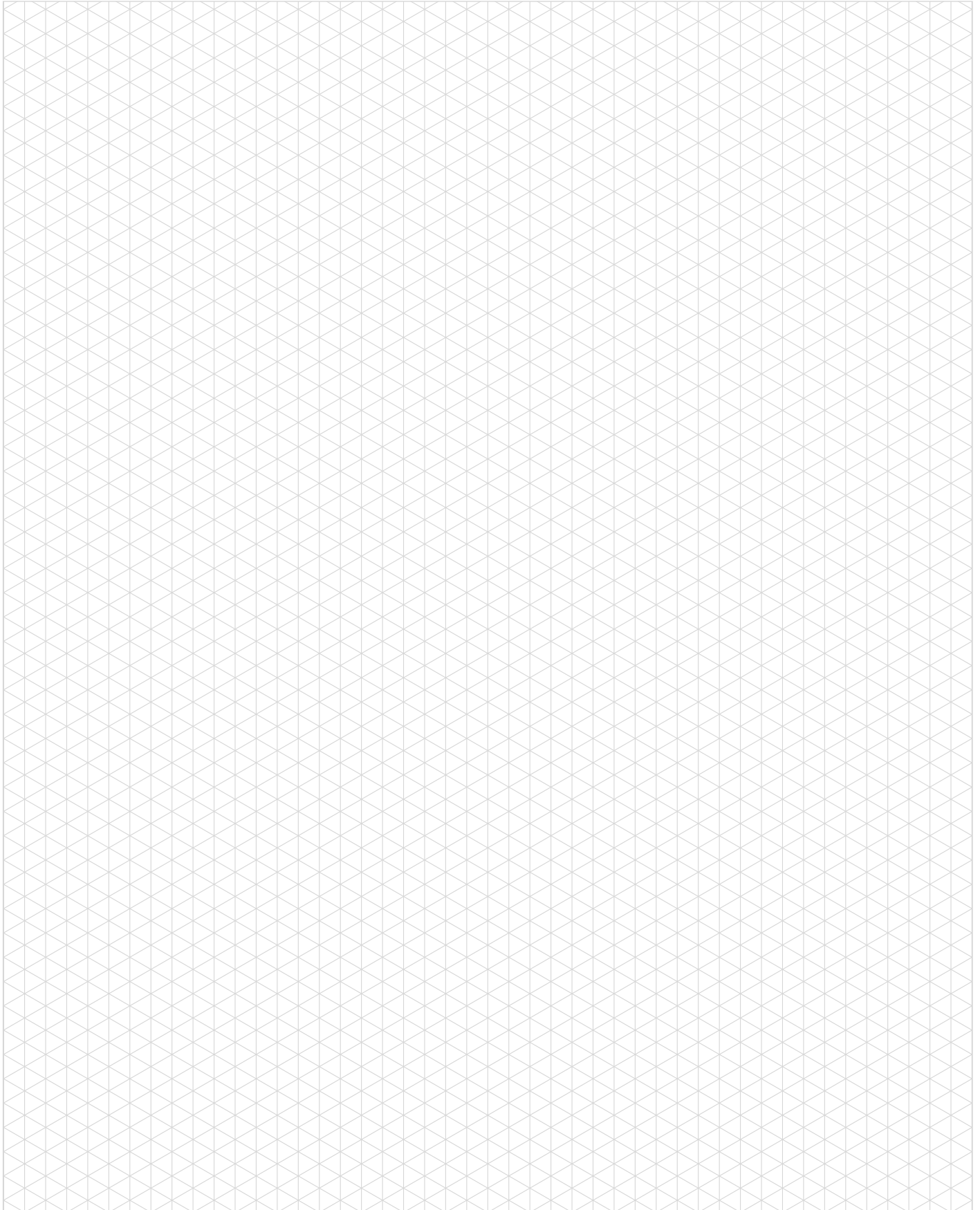
33D Overload Clutch with EZ Dial Mounting Adapter



Model	Internal Inertia kg-m ² [lb-in ²]	Torque Setting N-m [in-lb]
33D	0,852 [2910]	960, 1469, 2260, 2881 [8500, 13000, 20000, 25500]

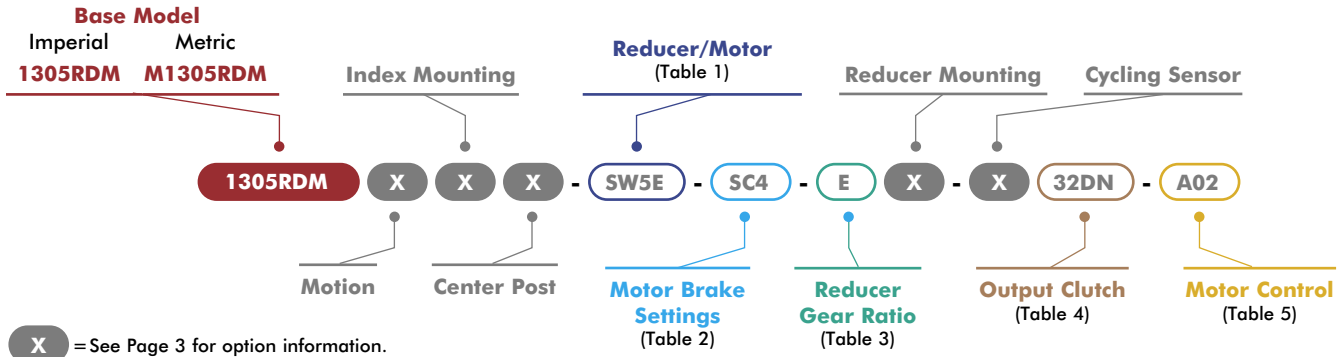
1100RDM SERIES

Notes



1305RDM SERIES

Rotary Index Drive | How To Order



1 Reducer/Motor Options*

Code	Description
0000	No Reducer or Motor*
7350C Motors	
CD2A	Indexer with 7350C Adapter*
CS2B	CONE DRIVE 7350C W/56C Reducer, SE Worm
CS2C	CONE DRIVE 7350C W/145TC Reducer, SE Worm
CS2D	CONE DRIVE 7350C Reducer w/ 1.0HP AC 56C Motor, SE Worm
CS2E	CONE DRIVE 7350C Reducer w/ 2.0HP AC 145TC Motor, SE Worm
CS2F	CONE DRIVE 7350C Reducer w/ 1.0HP 90V DC 56C Motor, SE Worm
CS2G	CONE DRIVE 7350C Reducer w/1.0HP 180V DC 56C Motor, SE Worm
CS2H	CONE DRIVE 7350C Reducer w/2.0HP 180V DC 143TC Motor, SE Worm
CD2B	CONE DRIVE 7350C w/ 56C Reducer, DE Worm
CD2C	CONE DRIVE 7350C W/145TC Reducer, DE Worm
CD2D	CONE DRIVE 7350C Reducer w/ 1.0HP AC 56C Motor, DE Worm
CD2E	CONE DRIVE 7350C Reducer w/ 2.0HP AC 145TC Motor, DE Worm
CD2F	CONE DRIVE 7350C Reducer w/ 1.0HP 90V DC 56C Motor, DE Worm
CD2G	CONE DRIVE 7350C Reducer w/ 1.0HP 180V DC 56C Motor, DE Worm
CD2H	CONE DRIVE 7350C Reducer w/ 2.0HP 180V DC 143TC Motor, DE Worm
SEW KH67 Motors	
SW4A	Indexer with KH67 Adapter*
SW4B	SEW KH67DRN80M4 Reducer with 0.75Kw Motor (60Hz, 230/460V)
SW4C	SEW KH67DRN80M4 Reducer with 0.75Kw Motor (50Hz, 400V)
SW4D	SEW KH67DRN80M4 Reducer with 0.75Kw Motor (60Hz, 575V)
SW4E	SEW KH67DRN90L4 Reducer with 1.5Kw Motor (60Hz, 230/460V)
SW4F	SEW KH67DRN90L4 Reducer with 1.5Kw Motor (50Hz, 400V)
SW4G	SEW KH67DRN90L4 Reducer with 1.5Kw Motor (60Hz, 575V)
SEW KH77 Motors	
SW5A	Indexer with KH77 Adapter*
SW5B	SEW KH77DRN80M4 Reducer with 0.75Kw Motor (60Hz, 230/460V)
SW5C	SEW KH77DRN80M4 Reducer with 0.75Kw Motor (50Hz, 400V)
SW5D	SEW KH77DRN80M4 Reducer with 0.75Kw Motor (60Hz, 575V)
SW5E	SEW KH77DRN90L4 Reducer with 1.5Kw Motor (60Hz, 230/460V)
SW5F	SEW KH77DRN90L4 Reducer with 1.5Kw Motor (50Hz, 400V)
SW5G	SEW KH77DRN90L4 Reducer with 1.5Kw Motor (60Hz, 575V)
STM RMI-110 Motors	
RM7A	Indexer with RMI-110 Adapter*
RM7B	STM RMI-110/LFB/IEC90-B14 Reducer only
RM7C	STM RMI-110/LFB/IEC100-B14 Reducer only
RM7D	STM RMI-110/LFB/1.1kW Reducer and Motor
RM7E	STM RMI-110/LFB/2.2kW Reducer and Motor

*All Reducer/Motor adapters require Gear Ratio option to be 0.

2 Motor Brake*

Code	Description
000	(NO BRAKE/NO SEW)
S1A	1.69 Nm (BE05)
S1B	2.49 Nm (BE05)
S1C	3.50 Nm (BE05)
S2A	4.97 Nm (BE1)
S2B	7.01 Nm (BE1)
S2C	9.94 Nm (BE1)
S3A	9.94 Nm (BE2)
S3B	14.01 Nm (BE2)
S3C	20.00 Nm (BE2)
S4A	20.00 Nm (BE5)
S4B	28.02 Nm (BE5)
S4C	40.00 Nm (BE5)
S4D	55.03 Nm (BE5)

*SEW Motor brake setting options only. All other motors use option code 000.

3 Reducer Gear Ratios*

Code	Description			
	7350C	SEW KH67	SEW KH77	STM RMI-110
0	N/A	N/A	N/A	N/A
A	10:1	9.66:1	9.56:1	10:1
B	15:1	15.19:1	15.84:1	15:1
C	20:1	19.30:1	20.25:1	20:1
D	28:1	30.22:1	29.27:1	25:1
E	40:1	38.39:1	40.04:1	30:1
F	49:1	48.77:1	51.18:1	40:1
G	56:1	60.66:1	58.34:1	50:1
H	70:1	68.95:1	73.99:1	60:1

*All Reducer/Motor adapters require Gear Ratio option to be 0.
Select Gear ratio column based on the reducer type selected.

4 Output Clutch & Settings

1305RDM Imperial Clutch Models		M1305RDM Metric Clutch Models	
Code	Description	Code	Description
0000	No Output Overload Clutch	0000	No Output Overload Clutch
32DA	32D/8500 In-Lb, Standard*	M32DA	M32D/960 Nm, Standard*
32DB	32D/13000 In-Lb, Standard*	M32DB	M32D/1470 Nm, Standard*
32DC	32D/20000 In-Lb, Standard*	M32DC	M32D/2260 Nm, Standard*
32DD	32D/31000 In-Lb, Standard*	M32DD	M32D/3500 Nm, Standard*
32DE	32D/16500 In-Lb, Standard*	M32DE	M32D/1865 Nm, Standard*
32DF	32D/25500 In-Lb, Standard*	M32DF	M32D/2880 Nm, Standard*
32DG	32D/23500 In-Lb, Standard*	M32DG	M32D/2655 Nm, Standard*
32DH	32D/8500 In-Lb, Thru-Hole	M32DH	M32D/960 Nm, Thru-Hole
32DJ	32D/13000 In-Lb, Thru-Hole	M32DJ	M32D/1470 Nm, Thru-Hole
32DK	32D/20000 In-Lb, Thru-Hole	M32DK	M32D/2260 Nm, Thru-Hole
32DL	32D/31000 In-Lb, Thru-Hole	M32DL	M32D/3500 Nm, Thru-Hole
32DM	32D/16500 In-Lb, Thru-Hole	M32DM	M32D/1865 Nm, Thru-Hole
32DN	32D/25500 In-Lb, Thru-Hole	M32DN	M32D/2880 Nm, Thru-Hole
32DP	32D/23500 In-Lb, Thru-Hole	M32DP	M32D/2655 Nm, Thru-Hole
32EA	32D/8500 In-Lb, Standard, EZ*	M32EA	M32D/960 Nm, Standard, EZ*
32EB	32D/13000 In-Lb, Standard, EZ*	M32EB	M32D/1470 Nm, Standard, EZ*
32EC	32D/20000 In-Lb, Standard, EZ*	M32EC	M32D/2260 Nm, Standard, EZ*
32ED	32D/31000 In-Lb, Standard, EZ*	M32ED	M32D/3500 Nm, Standard, EZ*
32EE	32D/16500 In-Lb, Standard, EZ*	M32EE	M32D/1865 Nm, Standard, EZ*
32EF	32D/25500 In-Lb, Standard, EZ*	M32EF	M32D/2880 Nm, Standard, EZ*
32EG	32D/23500 In-Lb, Standard, EZ*	M32EG	M32D/2655 Nm, Standard, EZ*
32EH	32D/8500 In-Lb, Thru-Hole, EZ	M32EH	M32D/960 Nm, Thru-Hole, EZ
32EJ	32D/13000 In-Lb, Thru-Hole, EZ	M32EJ	M32D/1470 Nm, Thru-Hole, EZ
32EK	32D/20000 In-Lb, Thru-Hole, EZ	M32EK	M32D/2260 Nm, Thru-Hole, EZ
32EL	32D/31000 In-Lb, Thru-Hole, EZ	M32EL	M32D/3500 Nm, Thru-Hole, EZ
32EM	32D/16500 In-Lb, Thru-Hole, EZ	M32EM	M32D/1865 Nm, Thru-Hole, EZ
32EN	32D/25500 In-Lb, Thru-Hole, EZ	M32EN	M32D/2880 Nm, Thru-Hole, EZ
32EP	32D/23500 In-Lb, Thru-Hole, EZ	M32EP	M32D/2655 Nm, Thru-Hole, EZ

* Cannot be used with center post options P and B.

5 Motor Control

Code	Description
000	NO MOTOR CONTROL
A01	120V 1Ph
A02	(AC) PowerFlex 523 1HP 240V 1Ph
A03	480V 3Ph
A04	120V 1Ph
A05	(AC) PowerFlex 525 1HP 240V 1Ph
A06	480V 3Ph
A07	240V 3Ph
A08	(AC) PowerFlex 523 2HP 480V 3Ph
A09	240V 3Ph
A10	(AC) PowerFlex 525 2HP 480V 3Ph
A11	240V 3Ph
A12	(AC) PowerFlex 523 3HP 480V 3Ph
A13	240V 1Ph
A14	(AC) PowerFlex 525 3HP 480V 3Ph
A15	480V 3Ph
A16	(AC) PowerFlex 523 5HP 600V 3Ph
A17	480V 3Ph
A18	(AC) PowerFlex 525 5HP 600V 3Ph
D01	Uni-Directional
D02	(DC) Varipak 1HP 90VDC Bi-Directional
D03	Uni-Directional
D04	(DC) Varipak 2HP 180VDC Bi-Directional
D05	(DC) Cycletrol 3HP 180VDC

Maximum Inertia x 1000 kg-cm ² [lb-in ²] for standard package							
Stops	Motion Time [seconds]						
	0.458	0.611	0.764	0.917	1.222	1.528	1.833
2	0 [0]	12 [4]	38 [13]	76 [26]	140 [48]	214 [73]	298 [102]
3	6 [2]	32 [11]	76 [26]	146 [50]	258 [88]	389 [133]	538 [184]
4	29 [10]	94 [32]	208 [71]	380 [130]	664 [227]	995 [340]	1367 [467]
6	73 [25]	211 [72]	451 [154]	822 [281]	1419 [485]	2119 [724]	2909 [994]
8	138 [47]	383 [131]	811 [277]	1469 [502]	2528 [864]	3775 [1290]	5180 [1770]
12	325 [111]	878 [300]	1841 [629]	3319 [1134]	5706 [1950]	8510 [2908]	11670 [3988]
16	585 [200]	1571 [537]	3280 [1121]	5908 [2019]	10155 [3470]	15138 [5173]	20754 [7092]
Reducer Ratio							
	15	20	25	30	40	50	60

Other Motions (stops and index periods) available. Contact your DESTACO sales representative for more information.

Features

- 7300C Reducer (Ratios from 15:1 to 60:1)
- Double Extended Camshaft (Input Shaft)
- Center Thru Hole (Ø127 mm [Ø5.00 in.])
- 2 HP AC Drive Package with Inverter Duty Motor and Inverter Drive (up to 60 cpm)
- Cycle Cam and Limit Switch Mounted to Camshaft
- Right Hand Cam

Output Load Capacity (loads carried during index):

Radial	20684 N [4650 lbs]
Thrust/Axial	51822 N [11650 lbs]
Moment	4579 N-m [40528 in-lb]

Typical Application Dial Diameter:

508 mm [20 in] to 1829 mm [72 in]

Accuracy

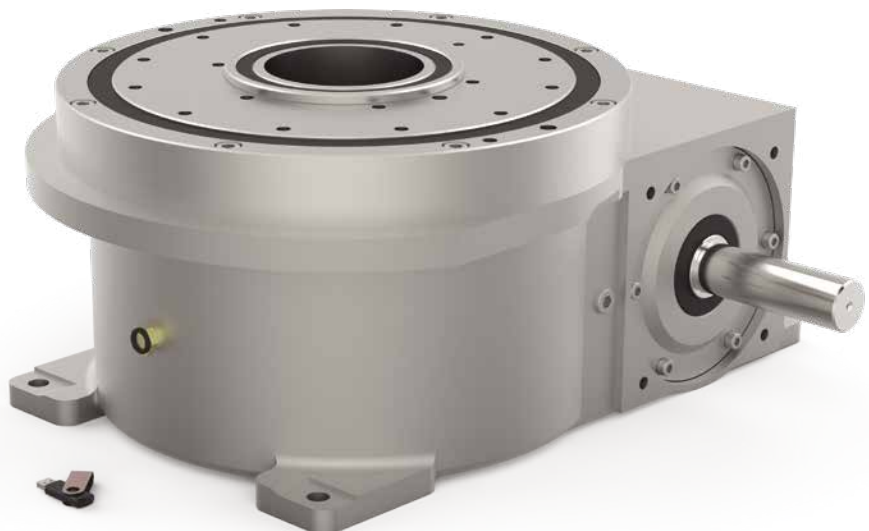
±38 arcsec / ±0,18 mm [±.007in]
at 914,4 mm [36in] Radius

Repeatability

±10 arcsec / ±0,05 mm [±.002in]
at 914,4 mm [36in] Radius

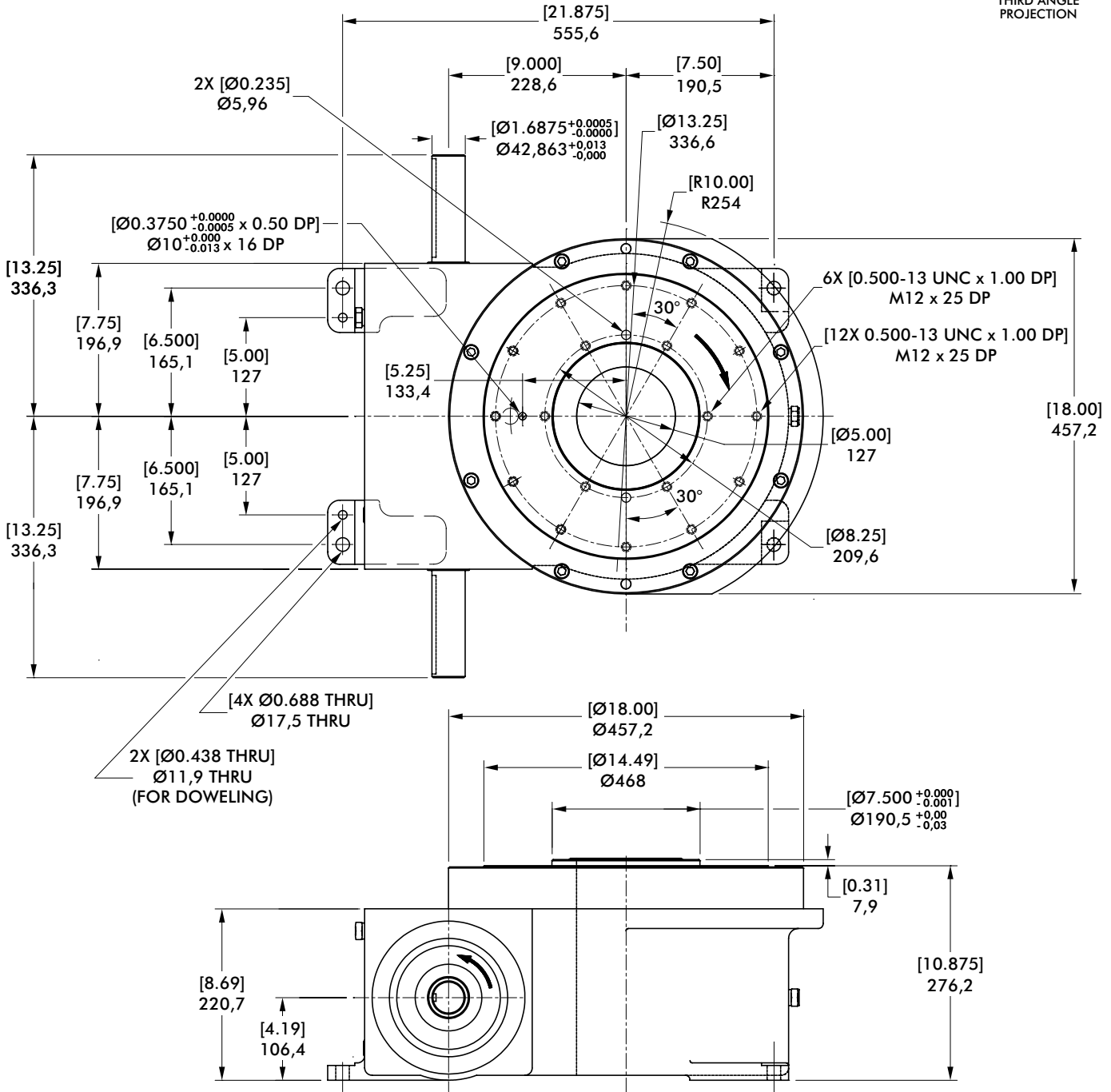
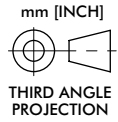
Optional Accessories

- 2 hp DC Motor
- Varipak DC Motor Control (up to 30 cpm)
- 7350C Heavy Duty Reducer (Ratios from 10:1 to 60:1)
- Output Mechanical Overload Clutch
– See Page 33
- EZ Mount Dial Adapter
- Stationary Center Post
- Dual Cam and Limit Switch
- Base Riser Blocks
- Electric Clutch-Brake
- Left Hand Cam
- Relief in Dwell for shot-pin applications



1305RDM SERIES

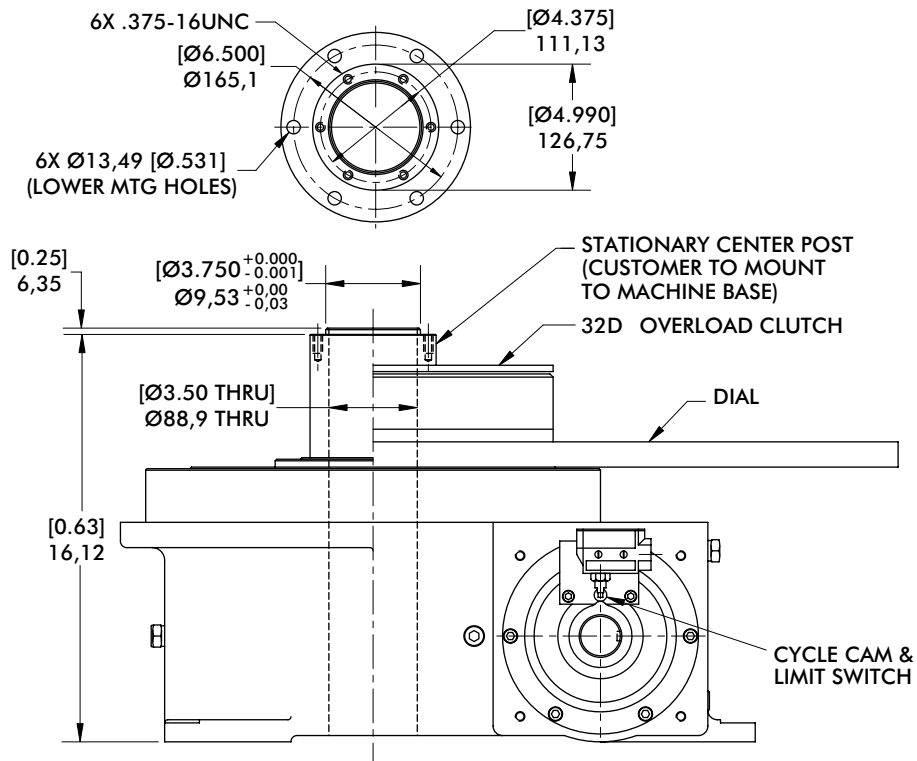
Rotary Index Drive | Dimensions

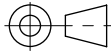


1305RDM SERIES

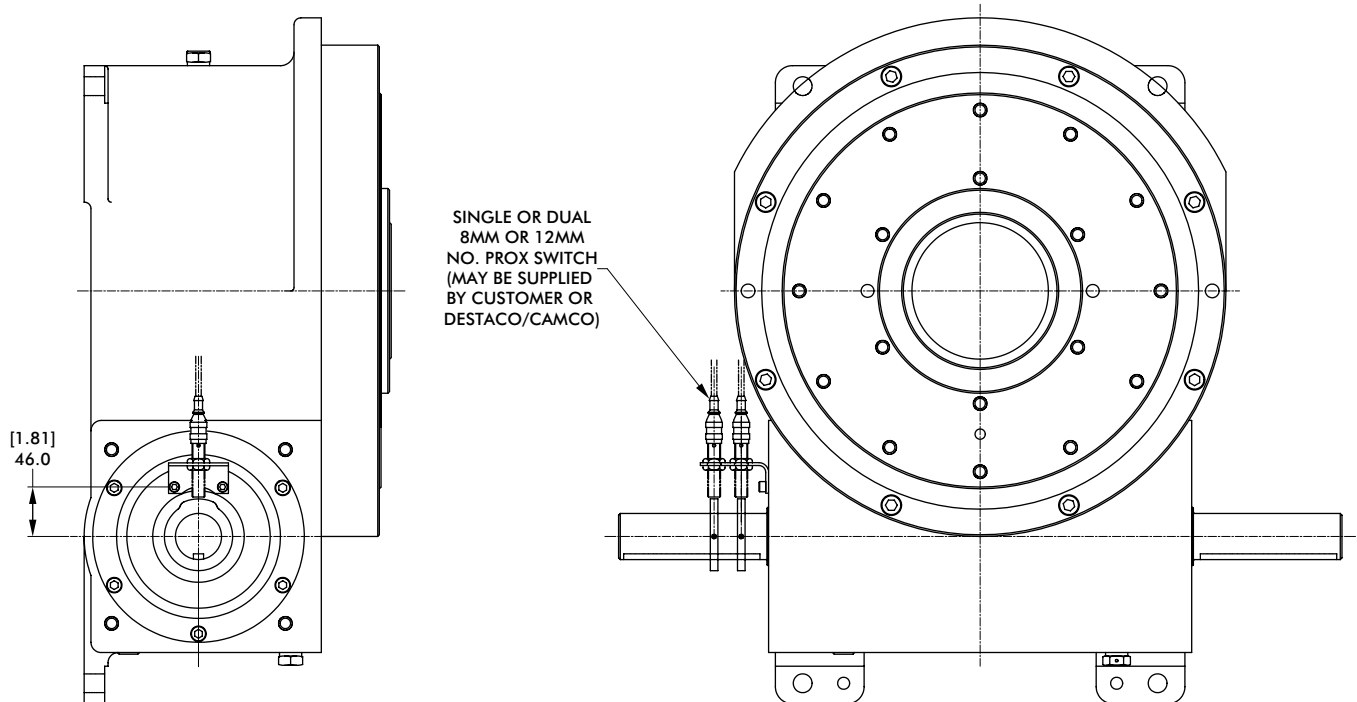
Rotary Index Drive | Product Overview | Technical Specifications

Center Post



mm [INCH]

 THIRD ANGLE PROJECTION

Proximity Switch

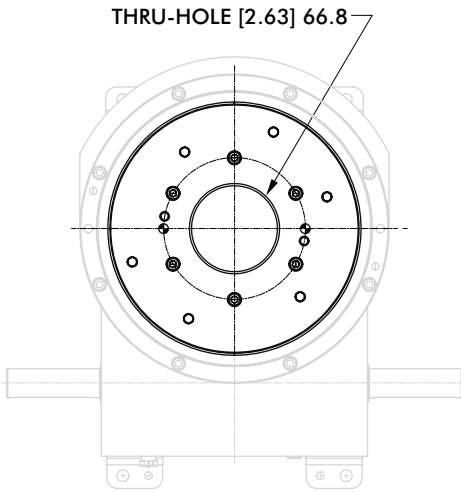


1305RDM SERIES

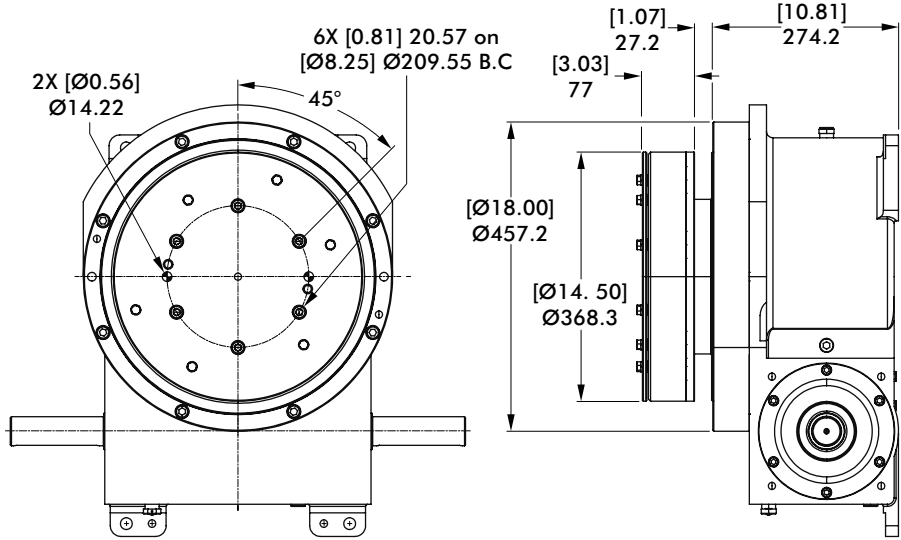
Rotary Index Drive | Dimensions

32D Overload Clutch

THRU-HOLE CLUTCH



STANDARD CLUTCH

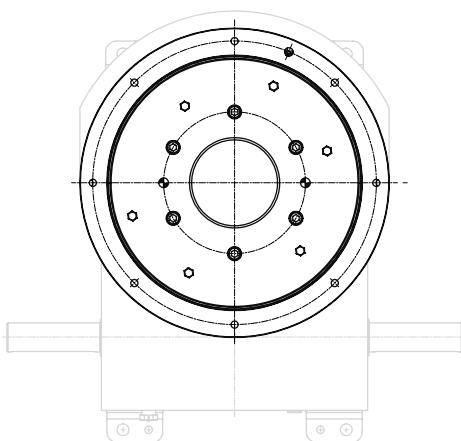


32D Overload Clutch with EZ Dial Mounting Adapter

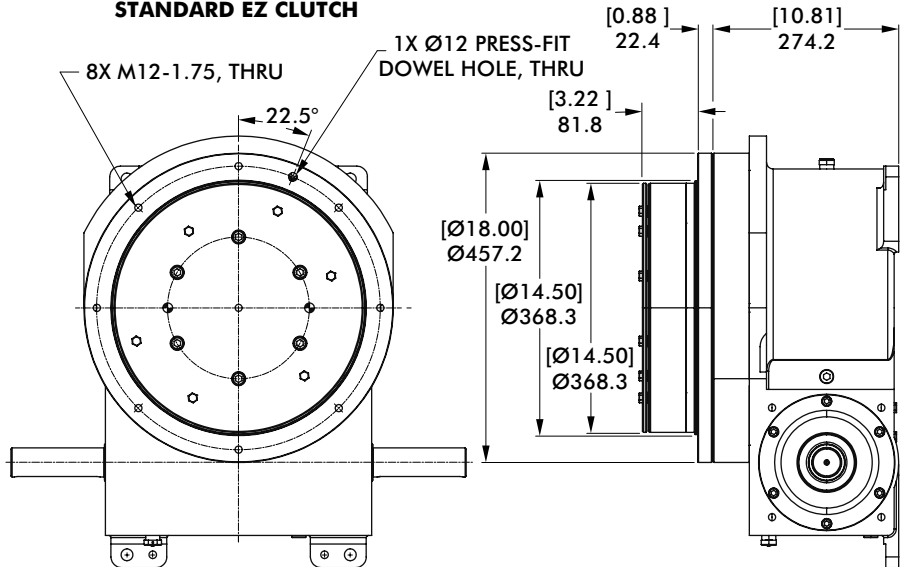
mm [INCH]



THRU-HOLE EZ CLUTCH



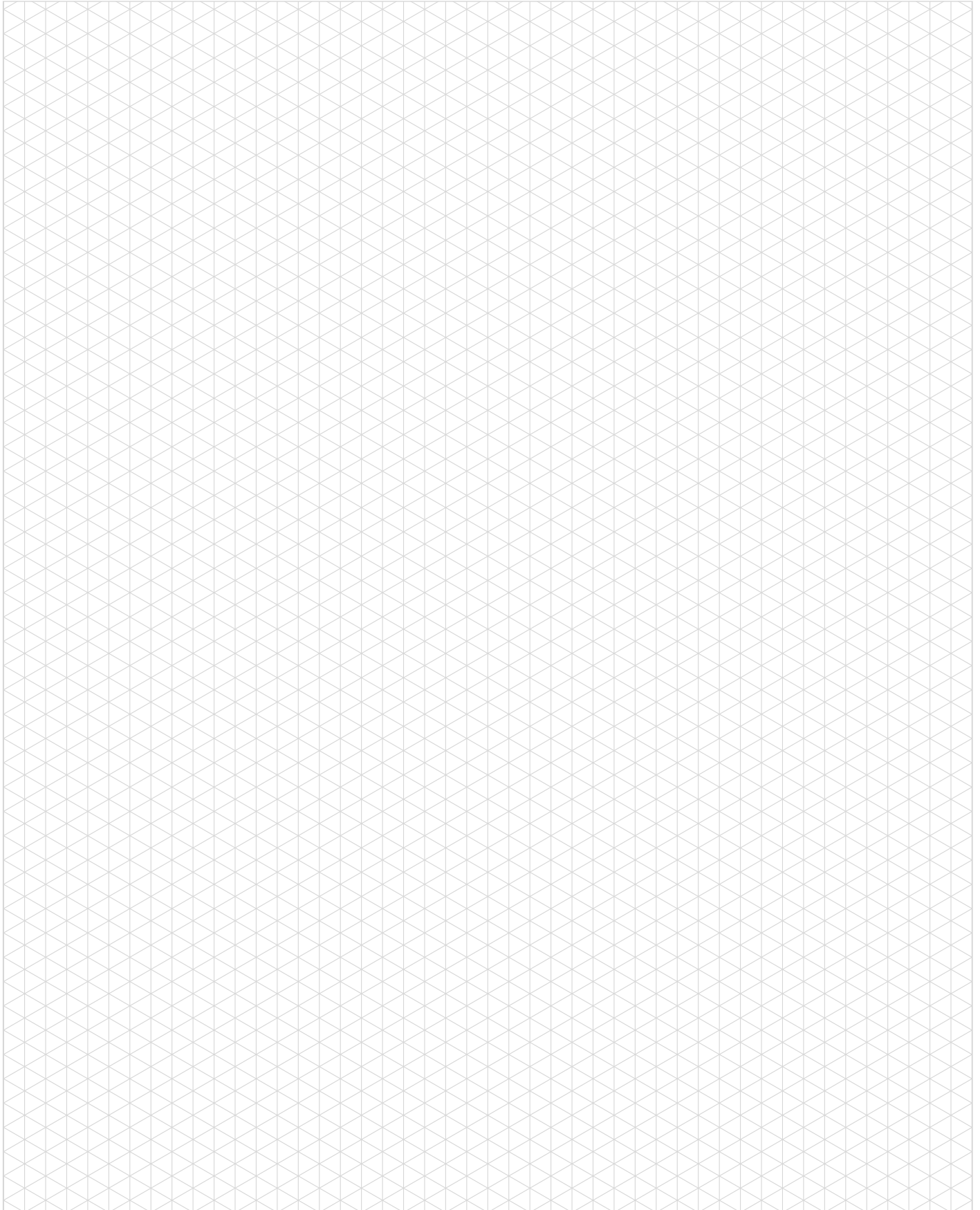
STANDARD EZ CLUTCH



Model	Internal Inertia kg-m ² [lb-in ²]	Torque Setting N-m [in-lb]
32D	0,852 [2910]	960, 1469, 2260, 3503 [8500, 13000, 20000, 31000]

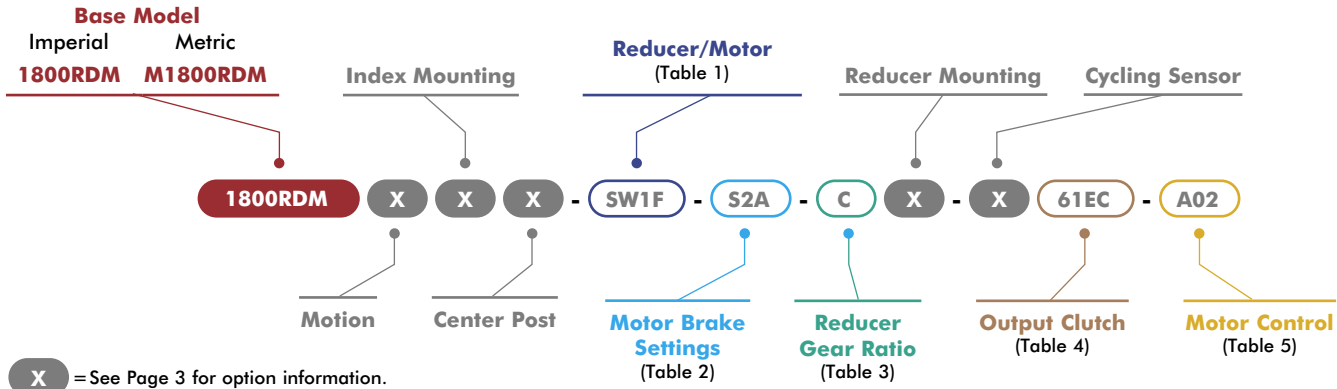
1305RDM SERIES

Notes



1800RDM SERIES

Rotary Index Drive | How To Order



X = See Page 3 for option information.

1 Reducer/Motor Options

Code	Description
0000	No Reducer or Motor*
7400C Motors	
CD3A	Indexer with 7400C Adapter*
CS3B	CONE DRIVE 7400C W/145TC Reducer, SE Worm
CS3C	CONE DRIVE 7400C W/182TC Reducer, SE Worm
CS3D	CONE DRIVE 7400C Reducer w/ 2.0HP AC 145TC Motor, SE Worm
CS3E	CONE DRIVE 7400C Reducer w/ 3.0HP AC 182TC Motor, SE Worm
CS2F	CONE DRIVE 7400C Reducer w/2.0HP 180V DC 143TC Motor, SE Worm
CS2G	CONE DRIVE 7400C Reducer w/3.0HP 180V DC 145TC Motor, SE Worm
CD3B	CONE DRIVE 7400C W/145TC Reducer, DE Worm
CD3C	CONE DRIVE 7400C W/182TC Reducer, DE Worm
CD3D	CONE DRIVE 7400C Reducer w/2.0HP AC 145TC Motor, DE Worm
CD3E	CONE DRIVE 7400C Reducer w/3.0HP AC 182TC Motor, DE Worm
CD2F	CONE DRIVE 7400C Reducer w/ 2.0HP 180V DC 143TC Motor, DE Worm
CD2G	CONE DRIVE 7400C Reducer w/ 3.0HP 180V DC 145TC Motor, DE Worm
SEW KH77 Motors	
SW5A	Indexer with KH77 Adapter*
SW5H	SEW KH77DRN100L4 Reducer with 2.2Kw Motor (60Hz, 230/460V)
SW5J	SEW KH77DRN100L4 Reducer with 2.2Kw Motor (50Hz, 400V)
SW5K	SEW KH77DRN100L4 Reducer with 2.2Kw Motor (60Hz, 575V)
SW5L	SEW KH77DRN100L4 Reducer with 3.7Kw Motor (60Hz, 230/460V)
SW5M	SEW KH77DRN100L4 Reducer with 3.7Kw Motor (50Hz, 400V)
SW5N	SEW KH77DRN100L4 Reducer with 3.7Kw Motor(60Hz, 575V)
SEW KH87 Motors	
SW6A	Indexer with KH87 Adapter*
SW6B	SEW KH87DRN100L4 Reducer with 2.2Kw Motor/Brake Motor (60Hz, 230/460V)
SW6C	SEW KH87DRN100L4 Reducer with 2.2Kw Motor/Brake Motor (50Hz, 400V)
SW6D	SEW KH87DRN100L4 Reducer with 2.2Kw Motor/Brake Motor (60Hz, 575V)
SW6E	SEW KH87DRN100L4 Reducer with 3.7Kw Motor/Brake Motor (60Hz, 230/460V)
SW6F	SEW KH87DRN100L4 Reducer with 3.7Kw Motor/Brake Motor (50Hz, 400V)
SW6G	SEW KH87DRN100L4 Reducer with 3.7Kw Motor/Brake Motor (60Hz, 575V)
STM RMI-150 Motors	
RM8A	Indexer with RMI-150 Adapter*
RM8B	STM RMI-150/LFB/IEC100-B14 Reducer Only
RM8C	STM RMI-150/LFB/IEC112-B14 Reducer Only
RM8D	STM RMI-150/LFB Reducer with 2.2kW Motor
RM8E	STM RMI-150/LFB Reducer with 4.0kW Motor

*All Reducer/Motor adapters require Gear Ratio option to be 0.

2 Motor Brake

Code	Description
000	No Brake
S1A	1.69 Nm (BE05)
S1B	2.49 Nm (BE05)
S1C	3.50 Nm (BE05)
S2A	4.97 Nm (BE1)
S2B	7.01 Nm (BE1)
S2C	9.94 Nm (BE1)
S3A	9.94 Nm (BE2)
S3B	14.01 Nm (BE2)
S3C	20.00 Nm (BE2)
S4A	20.00 Nm (BE5)
S4B	28.02 Nm (BE5)
S4C	40.00 Nm (BE5)
S4D	55.03 Nm (BE5)

3 Reducer Gear Ratios*

Code	Description			
	7400C	SEW KH77	SEW KH87	STM RMI-150
0	N/A	N/A	N/A	N/A
A	10:1	9.56:1	10.00:1	10:1
B	15:1	15.84:1	14.45:1	15:1
C	20:1	20.25:1	19.45:1	20:1
D	25:1	29.27:1	31.39:1	28:1
E	30:1	40.04:1	36.52:1	40:1
F	40:1	51.18:1	49.16:1	49:1
G	50:1	58.34:1	63.00:1	56:1
H	60:1	73.99:1	70.46:1	70:1

*All Reducer/Motor adapters require Gear Ratio option to be 0.
Select Gear ratio column based on the reducer type selected.

*SEW Motor brake setting options only. All other motors use option code 000.

4 Output Clutch & Settings

1800RDM Imperial Clutch Models		M1800RDM Metric Clutch Models	
Code	Description	Code	Description
0000	No Output Overload Clutch	0000	No Output Overload Clutch
61DA	61D, W/23000 In-Lb, SDP*	M61DA	M61D, W/2600 Nm, SDP*
61DB	61D, W/36000 In-Lb, SDP*	M61DB	M61D, W/4070 Nm, SDP*
61DC	61D, W/44000 In-Lb, SDP*	M61DC	M61D, W/4970 Nm, SDP*
61DD	61D, W/50000 In-Lb, SDP*	M61DD	M61D, W/5650 Nm, SDP*
61DE	61D, W/60000 In-Lb, SDP*	M61DE	M61D, W/6780 Nm, SDP*
61DF	61D, W/23000 In-Lb, THDP	M61DF	M61D, W/2600 Nm, THDP
61DG	61D, W/36000 In-Lb, THDP	M61DG	M61D, W/4070 Nm, THDP
61DH	61D, W/44000 In-Lb, THDP	M61DH	M61D, W/4970 Nm, THDP
61DJ	61D, W/50000 In-Lb, THDP	M61DJ	M61D, W/5650 Nm, THDP
61DK	61D, W/60000 In-Lb, THDP	M61DK	M61D, W/6780 Nm, THDP
61EA	61D, W/23000 In-Lb, SDP, EZ*	M61EA	M61D, W/2600 Nm, SDP, EZ*
61EB	61D, W/36000 In-Lb, SDP, EZ*	M61EB	M61D, W/4070 Nm, SDP, EZ*
61EC	61D, W/44000 In-Lb, SDP, EZ*	M61EC	M61D, W/4970 Nm, SDP, EZ*
61ED	61D, W/50000 In-Lb, SDP, EZ*	M61ED	M61D, W/5650 Nm, SDP, EZ*
61EE	61D, W/60000 In-Lb, SDP, EZ*	M61EE	M61D, W/6780 Nm, SDP, EZ*
61EF	61D, W/23000 In-Lb, THDP, EZ	M61EF	M61D, W/2600 Nm, THDP, EZ
61EG	61D, W/36000 In-Lb, THDP, EZ	M61EG	M61D, W/4070 Nm, THDP, EZ
61EH	61D, W/44000 In-Lb, THDP, EZ	M61EH	M61D, W/4970 Nm, THDP, EZ
61EJ	61D, W/50000 In-Lb, THDP, EZ	M61EJ	M61D, W/5650 Nm, THDP, EZ
61EK	61D, W/60000 In-Lb, THDP, EZ	M61EK	M61D, W/6780 Nm, THDP, EZ

* Cannot be used with center post option P.

5 Motor Control

Code	Description	
000	NO MOTOR CONTROL	
A01		120V 1Ph
A02	(AC) PowerFlex 523 1HP	240V 1Ph
A03		480V 3Ph
A04		120V 1Ph
A05	(AC) PowerFlex 525 1HP	240V 1Ph
A06		480V 3Ph
A07	(AC) PowerFlex 523 2HP	240V 3Ph
A08		480V 3Ph
A09	(AC) PowerFlex 525 2HP	240V 3Ph
A10		480V 3Ph
A11		240V 3Ph
A12	(AC) PowerFlex 523 3HP	480V 3Ph
A13		240V 1Ph
A14	(AC) PowerFlex 525 3HP	480V 3Ph
A15		480V 3Ph
A16	(AC) PowerFlex 523 5HP	600V 3Ph
A17		480V 3Ph
A18	(AC) PowerFlex 525 5HP	600V 3Ph
D01	(DC) Varipak 1HP 90VDC	Uni-Directional
D02		Bi-Directional
D03		Uni-Directional
D04	(DC) Varipak 2HP 180VDC	Bi-Directional
D05	(DC) Cycletrol 3HP 180VDC	

Maximum Inertia x 1000 kg-cm ² [lb-in ²] for standard package							
Stops	Motion Time [seconds]						
	0.458	0.611	0.764	0.917	1.222	1.528	1.833
2	0 [0]	0 [0]	23 [8]	79 [27]	266 [91]	533 [182]	749 [256]
3	0 [0]	32 [11]	120 [41]	255 [87]	720 [246]	1381 [472]	1917 [655]
4	3 [1]	91 [31]	249 [85]	495 [169]	1332 [455]	2523 [862]	3488 [1192]
6	56 [19]	243 [83]	577 [197]	1097 [375]	2871 [981]	5390 [1842]	7439 [2542]
8	132 [45]	462 [158]	1056 [361]	1984 [678]	5133 [1754]	9616 [3286]	13257 [4530]
12	351 [120]	1100 [376]	2435 [832]	4518 [1544]	11606 [3966]	21690 [7412]	29881 [10211]
16	656 [224]	1987 [679]	4360 [1490]	8065 [2756]	20666 [7062]	38593 [13188]	53152 [18163]
Reducer Ratio							
	15	20	25	30	40	50	60

Other Motions (stops and index periods) available. Contact your DESTACO sales representative for more information.

Features

- 7400C Reducer (Ratios from 15:1 to 60:1)
- Double Extended Camshaft (Input Shaft)
- Center Thru Hole (Ø165,1 mm [Ø6.50 in.])
- 2 or 3 HP AC Drive Package with Inverter Duty Motor and Inverter Drive (up to 60 cpm)
- Cycle Cam and Limit Switch Mounted to Camshaft
- Right Hand Cam

Output Load Capacity (loads carried during index):

Radial	26022 N [5850 lbs]
Thrust/Axial	61166 N [14650 lbs]
Moment	7696 N-m [68119 in-lb]

Typical Application Dial Diameter:

660 mm [26 in] to 1829 mm [96 in]

Accuracy

±27 arcsec / ±0,15 mm [±.006in]
at 1219,2 mm [48in] Radius

Repeatability

±7 arcsec / ±0,041 mm [±.0016in]
at 1219,2 mm [48in] Radius

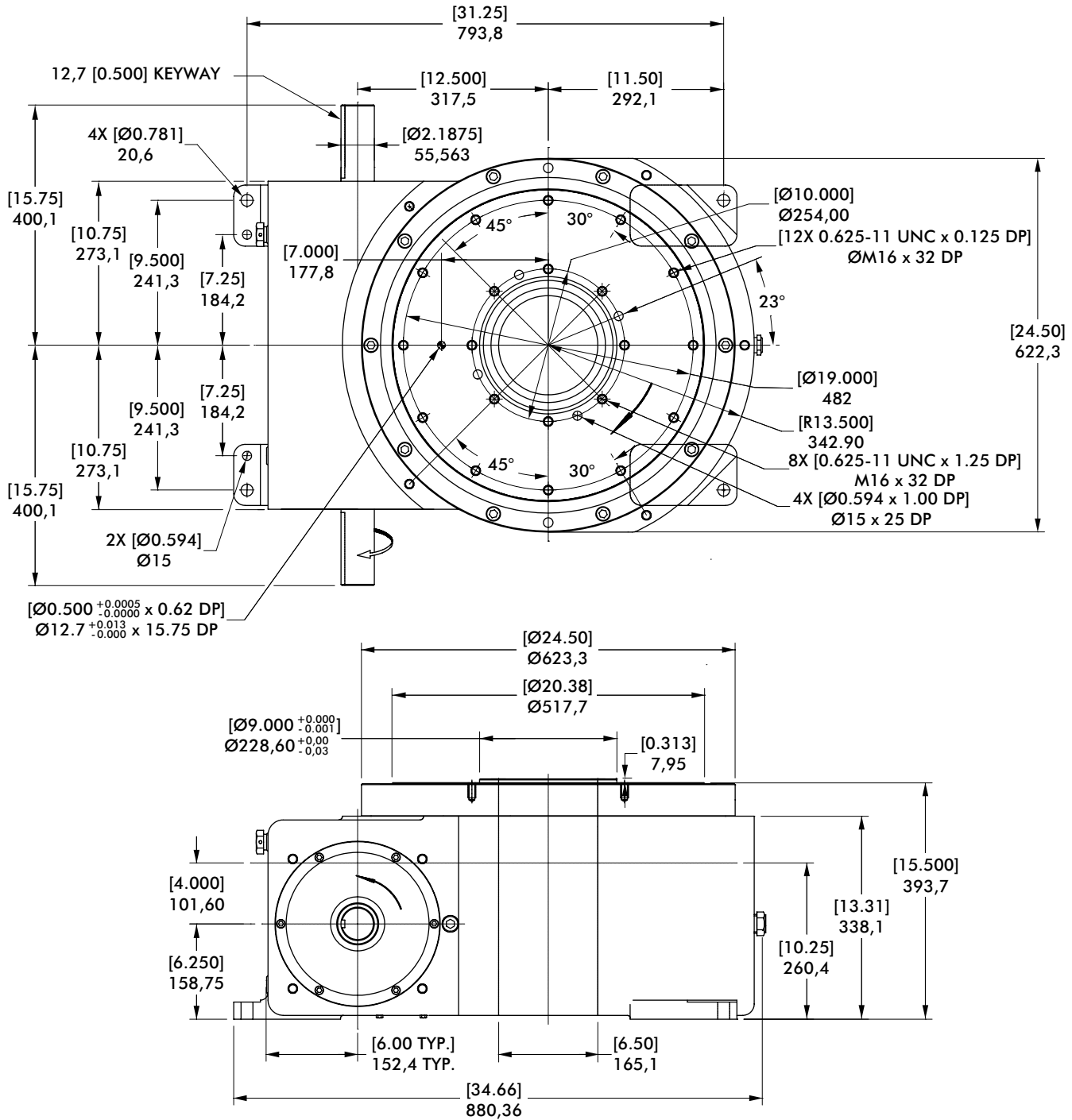
Optional Accessories

- 2 hp DC Motor with Varipak DC Motor Control (up to 30 cpm)
- 3 hp DC Motor
- 7500C Heavy Duty Reducer (Ratios from 10:1 to 60:1)
- Output Mechanical Overload Clutch – See Page 39
- EZ Mount Dial Adapter
- Stationary Center Post
- Dual Cam and Limit Switch
- Base Riser Blocks
- Electric Clutch-Brake
- Left Hand Cam
- Relief in Dwell for shot-pin applications

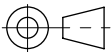


180ORDM SERIES

Rotary Index Drive | Dimensions



mm [INCH]

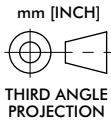
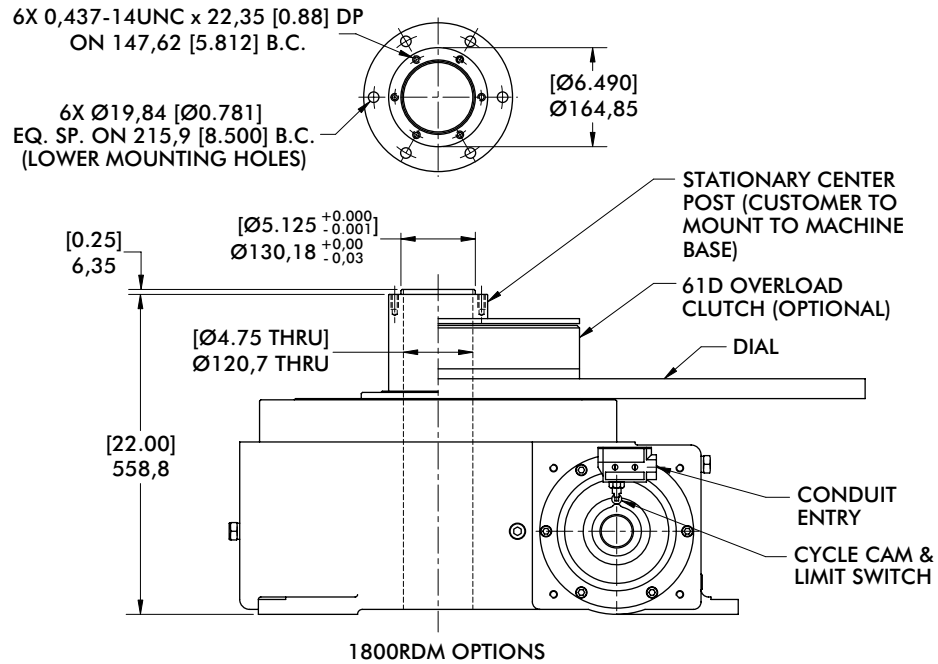


THIRD ANGLE PROJECTION

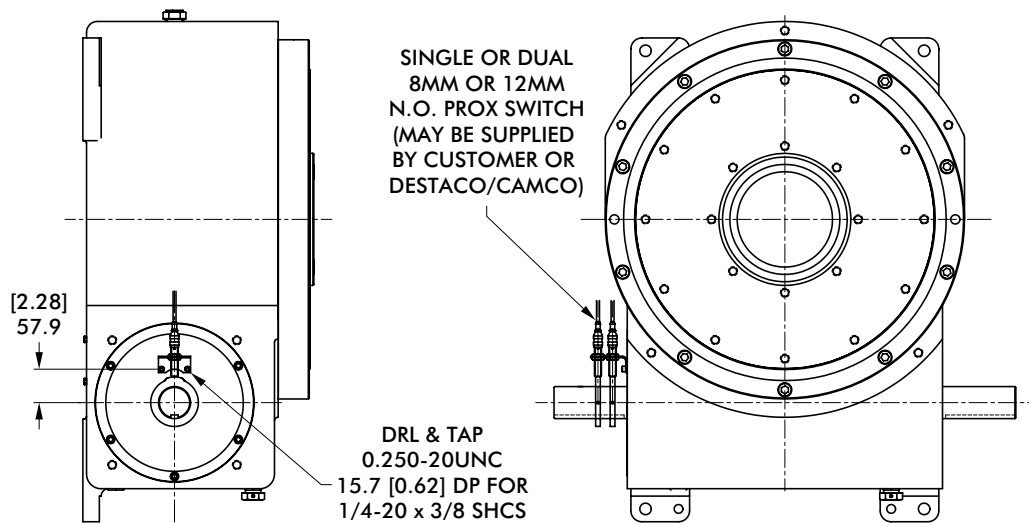
1800RDM SERIES

Rotary Index Drive | Product Overview | Technical Specifications

Center Post



Proximity Switch

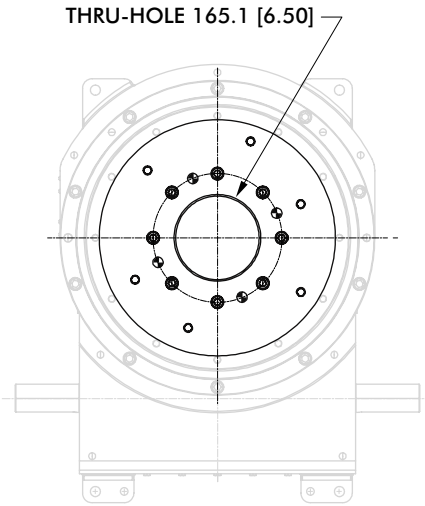


180ORDM SERIES

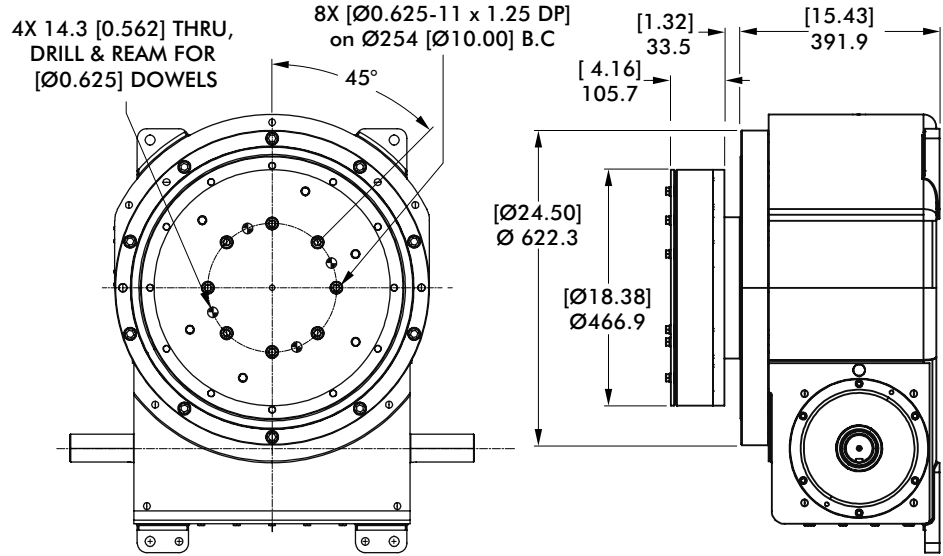
Rotary Index Drive | Dimensions

61D Overload Clutch

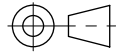
THRU-HOLE CLUTCH



STANDARD CLUTCH



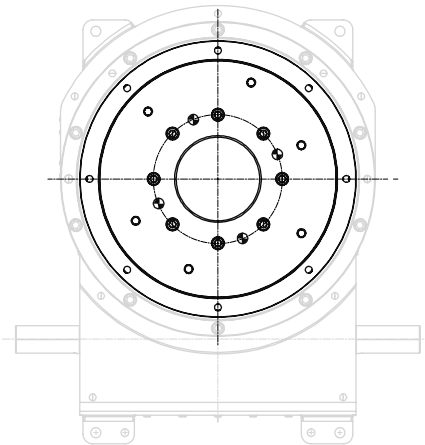
mm [INCH]



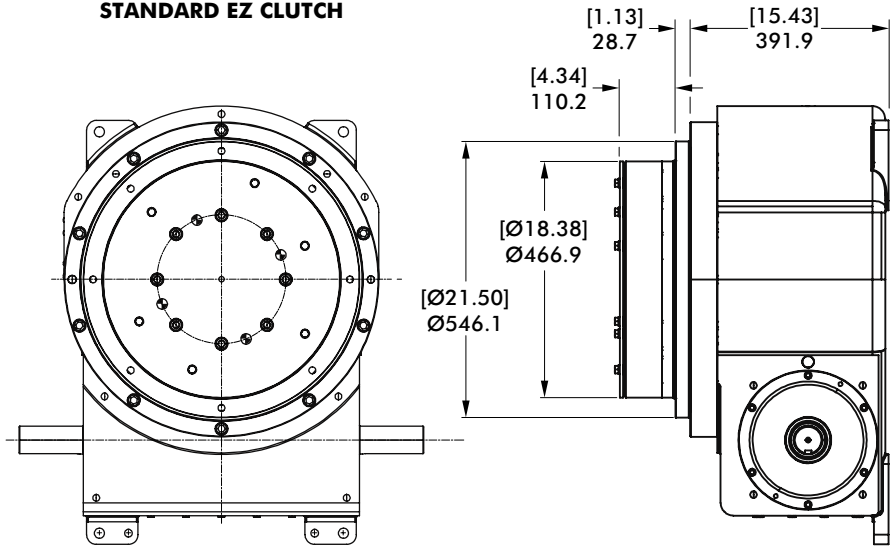
THIRD ANGLE PROJECTION

61D Overload Clutch with EZ Dial Mounting Adapter

THRU-HOLE EZ CLUTCH



STANDARD EZ CLUTCH



Model	Internal Inertia kg-m ² [lb-in ²]	Torque Setting N-m [in-lb]
61D	1,434 [4900]	2599, 4067, 4971, 5649, 6779 [23000, 36000, 44000, 50000, 60000]

1800RDM SERIES

Notes

