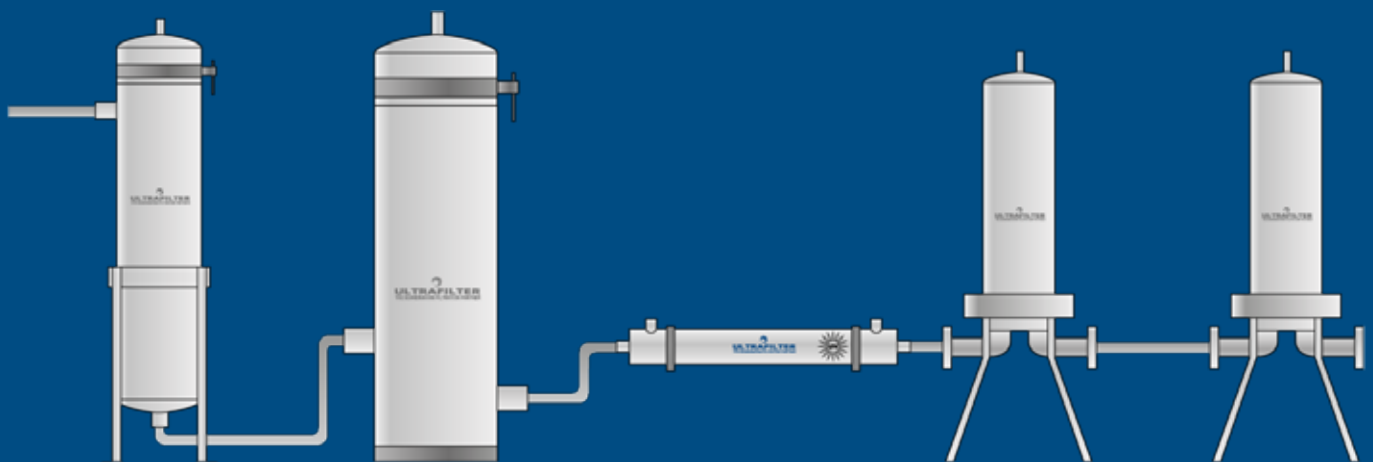


LIQUID

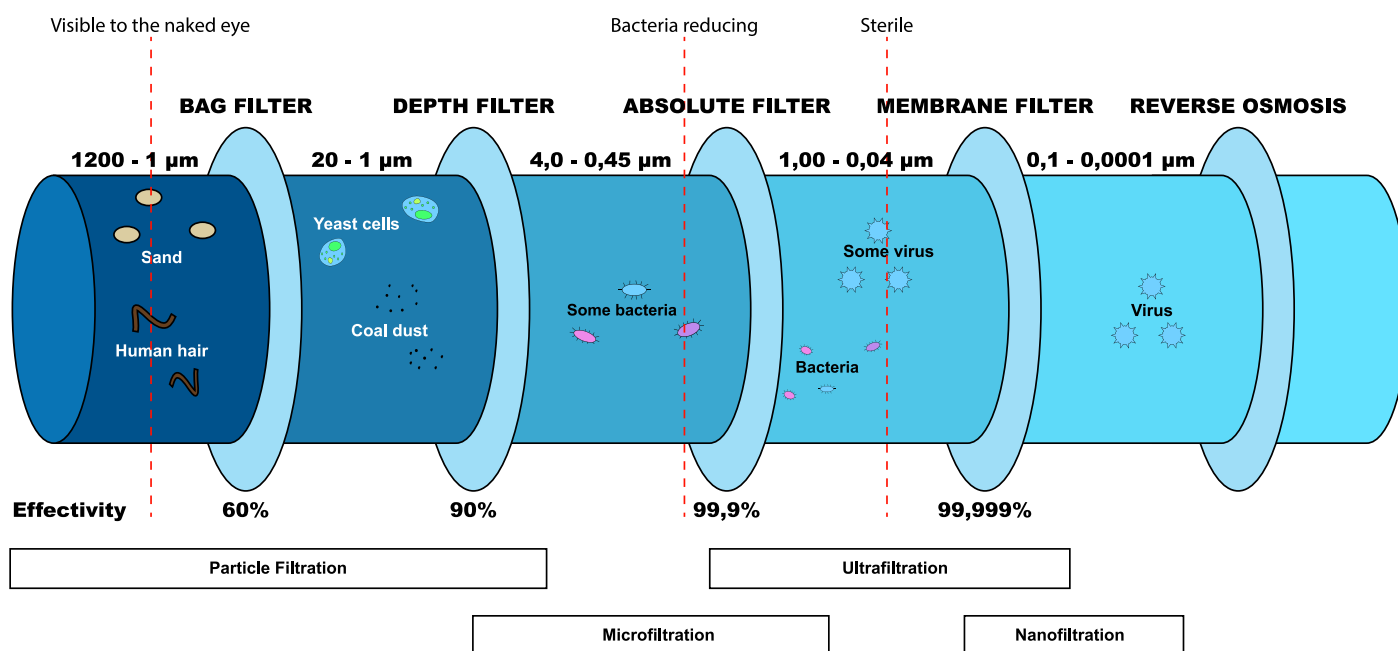


LIQUID FILTRATION



Liquid filtration today is for everything from ingredients and final products to wastewater and cooling water. The filtration degree can range from a millimeter, and to sterilising grades below 0.2 micron. We offer various filtration techniques and materials to meet our concept of Total Filtration Management. We have filter housings in stainless steel or various plastics, as well as a long range of filter elements from spun cotton to pharmaceutical membranes.

In this area of our catalogue, you are able to read about some of the various materials and techniques we utilise in liquid filtration, from our industrial grade high-flow filters, to our FDA and EC approved filtration solutions for high requirement tasks.



| Filtration Process | Range | Application Example |
|---------------------|----------------|---------------------|
| Particle Filtration | 1000 - 1 µm | General Industry |
| Microfiltration | 1 - 0,1 µm | Food and Beverage |
| Ultrafiltration | 0,1 - 0,001 µm | Pharmaceutical |
| Nanofiltration | < 0,001 µm | |

FILTRATION IN FOOD & BEVERAGES

Besides specific pharmaceutical grade requirements, you find some of the highest quality demands in the FDA approval by CFR article 21, and the European EC 1935/2004, commonly known as the food and beverage certifications.

The Pioneers of liquid filtration, the food and beverages industry, have long held high demands for sterile filters, pre-filters and even process water filtration, to reduce the risk of any contamination of product or employees, and with standardisation of the requirements, the demands have not got any less specific or easier to meet, but our product range have been designed to fit your highest expectation, from our high capacity filter bags, to the highest efficiency membrane filters.

The bulk of the range is sold for stainless steel filter housings, although we offer a long range of FDA and EC approved polypropylene filter housings, as well as steel housings in both 304 and 316 stainless steel housing.

You can find filter elements for any application, and for food and beverages we have PES filters for wine, beer or bottled water, as well as a long range of general purpose filters for milk, ingredient saltwater, enzymes, viscous liquids and many more.

BAG FILTERS SIZE 3 & 4

Ultra-Bag PP / PE / NMO



Technical Data

Polypropylene, Polyester or Nylon

Retention Rate: 1 to 1200 μm

Efficiency: 80%

Diameter: 10cm

Length: Size 3: 25 cm, Size 4: 40 cm

PP: 82°C. PE: 120°C. NMO: 90°C



Features & Benefits

Top ring of polypropylene, polymer or stainless steel.

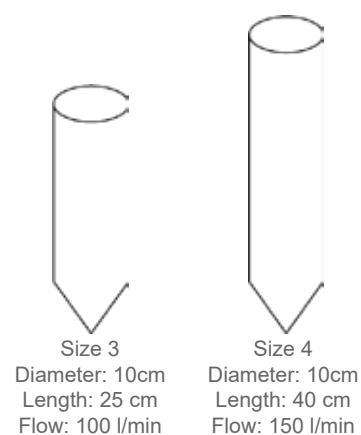
The filter bags distinguish themselves by high flow capability and dirt holding capacity. They come in a broad selection of filtration degrees from 1 to 200 micron in polypropylene and the high temperature polyester bags. We also carry Nylon bags for rough filtrations up to 1200 microns. Less than 30% particles can pass through a bag filter of the same filtration degree.

All bags are available as FDA and EC certified version with polypropylene fixture, as well as with a steel ring fixture version for industrial applications.

Polypropylene and polyester bags utilise the depth filtration technique, trapping various particles and oil remnants in the fibres of the material, however the nylon material is a mesh filter bag, meaning it's a surface filtration, often used for more viscous liquids or coarser filtration degrees.

| Bag material | Polypropylene | | Polyester | | Nylon | |
|----------------|---------------|----|-----------|----|-------|----|
| Ring material | PP | SS | PM | SS | PM | SS |
| Food | • | | • | | • | |
| Beverages | • | | • | | • | |
| High viscosity | | | | | • | • |
| Process Water | • | • | • | • | • | • |
| - Over 80°C | | | • | • | • | • |

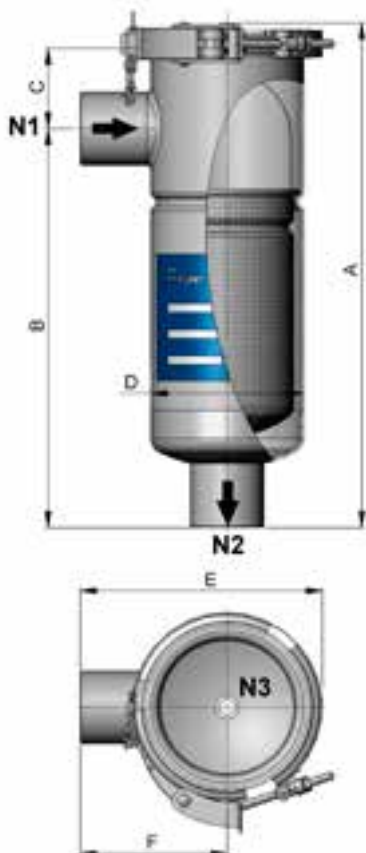
PP = Polypropylene. SS = Stainless Steel. PM = Polymer



| Filtration rate μm | | | | | | | | | | | | | |
|-------------------------------|---|---|----|----|----|-----|-----|-----|-----|-----|-----|-----|------|
| Material | 1 | 5 | 10 | 25 | 50 | 100 | 150 | 200 | 250 | 400 | 600 | 800 | 1200 |
| PP | • | • | • | • | • | • | | • | | | | | |
| PE | • | • | • | • | • | • | | • | | | | | |
| NMO | | | | • | • | • | • | • | • | • | • | • | • |

BAG FILTER HOUSING SIZE 3 & 4

TF 3 & 4



Technical Data

Material: AISI 304 or AISI 316
 Flow: 100-150 l/min
 Pressure: 10 bar
 Temperature: -10 to +90°C
 FPM Gasket (others available)

The filter housings of the TF series (size 3/4) are welded stainless steel constructions to the admission of a filter bag of the size 3 or the size 4.

They exist of a vertical, cylindrical shell with welded protection split pin, therefore the lid during of the filtration process cannot be opened uncontrollably. The filter bag is fixed in the housing by a down holder in his situation reliably and is sealed. The supporting basket from stainless steel provides for a support sure about pressure of the used filter bag.

OPTIONS



Clamp Closing



Swing Bolt Closing

| Model | Flow l/min | Connection in/out | Bag size | Dimensions (mm) | | | | | |
|-------|---------------|----------------------|----------|-----------------|--------|----|--------|------|--------|
| | | | | A | B | C | D | E | F |
| TF 3 | 100 | 1 ½" | 3 | 380 | 299 ±5 | 60 | ø114,3 | ~180 | 110 ±5 |
| TF 4 | 150 | 1 ½" | 4 | 535 | 454 ±5 | 60 | ø114,3 | ~180 | 110 ±5 |

BAG FILTERS SIZE 1 & 2

Ultra-Bag PP / PE / NMO



Technical Data

Polypropylene, Polyester or Nylon

Retention Rate: 1 to 1200 μm

Efficiency: 80%

Diameter: 18cm

Length: Size 1: 45 cm, Size 2: 85 cm

PP: 82°C. PE: 120°C. NMO: 90°C



Features & Benefits

Top ring of polypropylene, polymer or stainless steel.

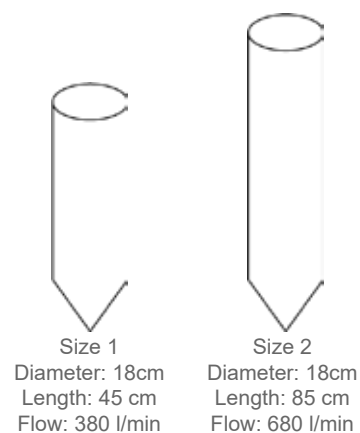
The filter bags distinguish themselves by high flow capability and dirt holding capacity. They come in a broad selection of filtration degrees from 1 to 200 micron in polypropylene and the high temperature polyester bags. We also carry Nylon bags for rough filtrations up to 1200 microns. Less than 30% particles can pass through a bag filter of the same filtration degree.

All bags are available as FDA and EC certified version with polypropylene fixture, as well as with a steel ring fixture version for industrial applications.

Polypropylene and polyester bags utilise the depth filtration technique, trapping various particles and oil remnants in the fibres of the material, however the nylon material is a mesh filter bag, meaning it's a surface filtration, often used for more viscous liquids or coarser filtration degrees.

| Bag material | Polypropylene | | Polyester | | Nylon | |
|----------------|---------------|----|-----------|----|-------|----|
| Ring material | PP | SS | PM | SS | PM | SS |
| Food | • | | • | | • | |
| Beverages | • | | • | | • | |
| High viscosity | | | | | • | • |
| Process Water | • | • | • | • | • | • |
| - Over 80°C | | | • | • | • | • |

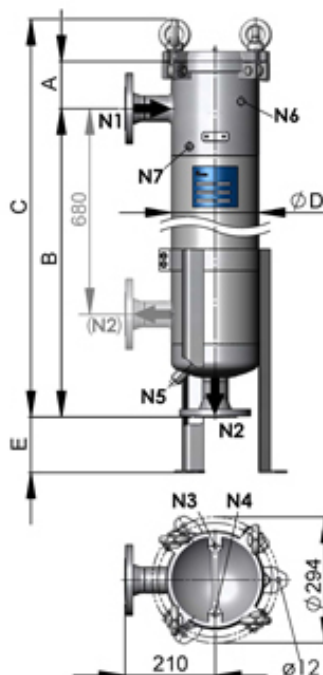
PP = Polypropylene. SS = Stainless Steel. PM = Polymer



| Filtration rate μm | | | | | | | | | | | | | |
|-------------------------------|---|---|----|----|----|-----|-----|-----|-----|-----|-----|-----|------|
| Material | 1 | 5 | 10 | 25 | 50 | 100 | 150 | 200 | 250 | 400 | 600 | 800 | 1200 |
| PP | • | • | • | • | • | • | | • | | | | | |
| PE | • | • | • | • | • | • | | • | | | | | |
| NMO | | | | • | • | • | • | • | • | • | • | • | • |

BAG FILTER HOUSING SIZE 1 & 2

TF 1 & 2



Technical Data

Material: Stainless steel 304 or 316

Flow: 380-1200 l/min

Pressure: 10 bar (20 bar option)

Temperature: -10 to +80°C

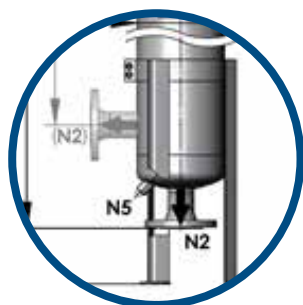
FPM Gasket (others available)

PED

The first filter of a production line is often the least clean, and has the highest flow. For this purpose, we recommend using a bag filter, as the high dirt holding capacity, as well as the high default flow rate makes it the optimal solution for many pre-filtrations, wastewater filtrations and also some cooling liquid lines. Bag filters come in 4 different sizes, from 100 litre/minute to roughly 680 litre/minute, and may be used for as fine filtrations as 1 micron.

Our filter housings are constructed in stainless steel, most with a heavy bolt-lid. Our filter housings for bags have a specially fixed steel accessory to hold down the bag, using the fixture of the filter housings lid, to prevent any bypass past the filter bags.

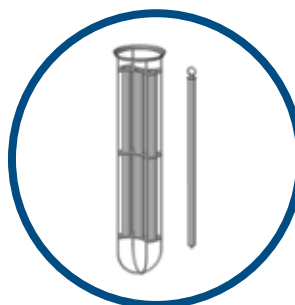
OPTIONS



Bottom or side
Outlet



Double / Duplex
Version



Magnet Bar



Top Inlet
Version

| Model | Flow l/min | Connection in/out | Bag size | Dimensions (mm) | | | | |
|-----------|---------------|----------------------|----------|-----------------|-----|------|------|----------|
| | | | | A | B | C | D | E |
| TF 1 BSP | 380 | 2" | 1 | 110 | 556 | 765 | ø204 | Max. 275 |
| TF 1 DIN | 380 | DN50 | 1 | 110 | 556 | 765 | ø204 | Max. 275 |
| TF 2 BSP | 680 | 2" | 2 | 110 | 920 | 1130 | ø204 | Max. 275 |
| TF 2 DIN | 680 | DN50 | 2 | 110 | 920 | 1130 | ø204 | Max. 275 |
| TF 2 DIN+ | 680 | DN80 | 2 | 110 | 920 | 1130 | ø204 | Max. 275 |
| TF Double | 1300 | DN80 / DN100 | 2 | 110 | 680 | 972 | ø204 | Max. 235 |

DEPTH FILTER CARTRIDGES



The Ultra-Depth filter cartridges are most often melt blown polypropylene or resin bonded filter elements, where the element is constructed porously with filtration pores of differing sizes, down to the innermost layer, which is no larger than the filtration degree of the depth filter cartridge.

Depth filters are most commonly supplied with a double open end, for easy and fast installation and change-out.

Less than 10% particles can pass a depth filter of the same filtration degree.

DEPTH FILTER APPLICATIONS

Whether it's the price or the availability, depth filters are amongst the most sold filtration products in the world, and application wise, this is for good reason.

At Ultrafilter we carry 3 base-line depth filters, Ultra-Depth PP and RB, and Ultra-Wound.

Depth filtration is a well-known and old filtration technique, high efficient for pre-filtration, clean-water filtration and a number of other applications, however depth filters have a certain efficiency like filter bags, and most depth filters reach much higher efficiencies than filter bags.

| Model | Ultra-Depth PP | Ultra-Depth RB | Ultra-Wound |
|-------------------------------|----------------|----------------|----------------|
| Filtration rates | 1 µm to 75 µm | 1 µm to 150 µm | 1 µm to 150 µm |
| Material | Polypropylene | Resin | Cotton |
| Maximum operating temperature | 80°C | 120°C | 120°C |
| Applications | | | |
| Chemicals | • | • | |
| Water | • | | • |
| Electronics | | • | |
| Food & Beverages | • | | |
| Industrial | • | • | • |
| Pharmaceuticals | • | | |

POLYPROPYLENE DEPTH FILTER

Ultra-Depth PP-TF



Technical Data

Material: Polypropylene

Retention Rates:

1 3 5 10 15 20 30 50 75

Efficiency: 90%

Temperature: 80°C

Lengths:

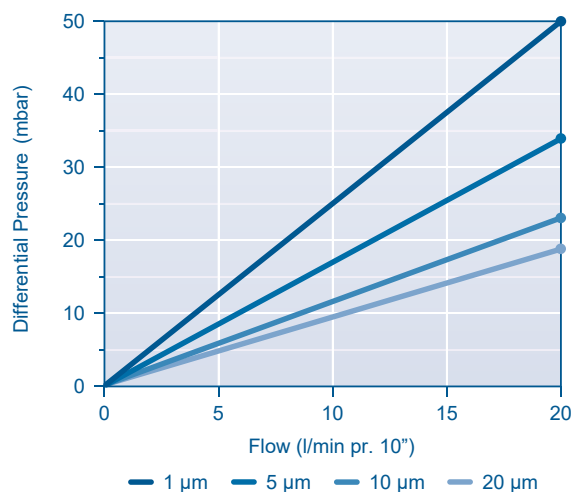
5" 9 3/4" 9 7/8" 10" 19 1/2" 20" 29 1/4" 30" 39" 40"

Endcap: DOE or Code 7 (others available)



Ultra-Depth PP-TF is a high flow, graded depth filter with high contaminant capacity for long life. Constructed from FDA approved polypropylene with excellent performance characteristics, it is an economic choice for a wide range of applications.

Ultra-Depth PP-TF is available in a range of industrial standard lengths as either absolute or nominal rated cartridges.



RECOMMENDED FILTER HOUSINGS



SK
Single



MK
Multi DOE

RESIN DEPTH FILTER

Ultra-Depth RB



Technical Data

Material: Resin

Retention Rates:

1 3 5 10 25 50 75 100 125 150

Efficiency: 90%

Temperature: 120°C

Lengths: 9 3/4" 19 1/2" 29 1/4" 39"

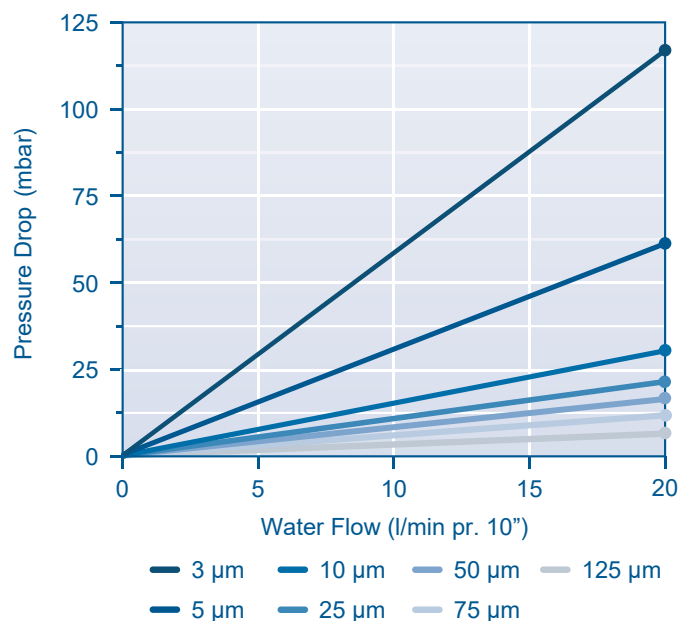
Endcap: DOE

Features & Benefits

High chemical resistance

Ultra-Depth RB is an industrial filter, with a high temperature resistance, as well as a good chemical resistance to paints, inks, adhesives, coolants, pesticides, fertiliser, lube oils and many solvents.

This filter is often used in energy production, as well as general industry, agricultural process liquids and general manufacture processes.



RECOMMENDED FILTER HOUSINGS



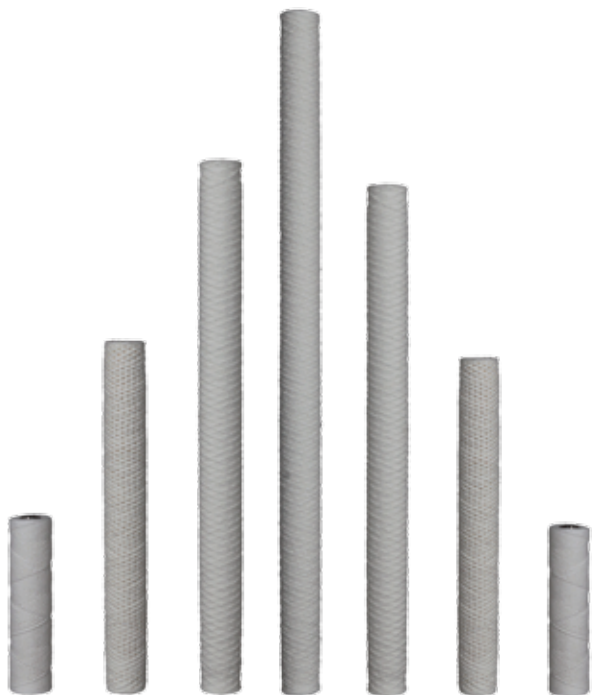
SK
Single



MK
Multi DOE

WOUND COTTON FILTERS

Ultra-Wound



Ultra-Spun series is perfectly suited as a pre-filter to protect more expensive secondary or final filtration systems.

Cotton is mainly used where polypropylene is incompatible with the filtrate. The bleached cotton meet the FDA standards and is designed specifically for water and food applications. The core is made of stainless steel, and makes the filter useful in high temperature applications.

Technical Data

Cotton media with SS304 core

Retention Rates:

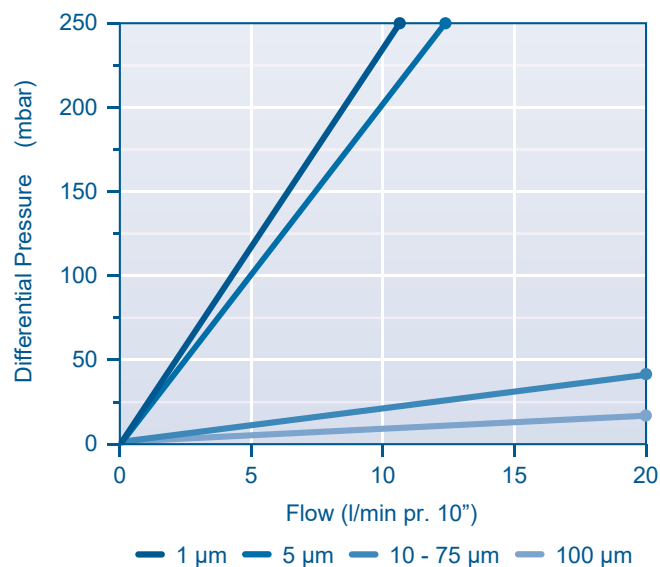
1 3 5 10 15 20 30 50 75

Efficiency: 90%

Temperature: 120°C

Lengths: 10" 20" 30" 40"

Endcap: DOE



RECOMMENDED FILTER HOUSINGS



SK
Single



MK
Multi DOE

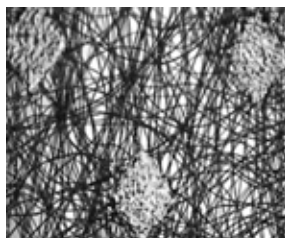
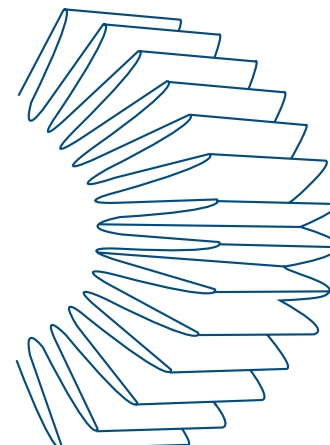
PLEATED FILTER CARTRIDGES

The Ultra-Pleat filter cartridges is a surface filter with an efficiency of 99,9%. Often the final filters of industrial and even food and beverage productions, absolute filters use surface filtration with fixed pore sizes for very high efficiencies and low filtration degrees. On some filters, the media is applied in several layers for a specific effect on the filtration, however at a cost of differential pressure.

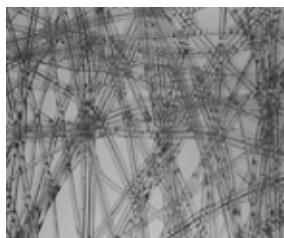
Our absolute filters have a pleated media around the core for a larger filtration surface, securing a longer life for the filter and lower differential pressure.

Absolute filters are most commonly supplied with a Code 7 connection, securing the elements by bayonet, securing a non-bypass connection between filter element and housing. As an alternative we also supply the Ultra-Pleat elements with DOE connections.

Less than 0.1% particles can pass an absolute filter of the same filtration degree.



Polypropylen
Media



Glass Fibre
Media

SERIES & APPLICATIONS

The most used pre-filters for pharmaceutical and ingredient production plants, as well as a very common final filter for dairies, frozen food production and many beverage productions without a need a sterile grade filtration, we supply 3 different absolute filters of our own production, Ultra-Pleat GP-M, PP100 and PP-K.

| Model | Ultra-Pleat GP-M | Ultra-Pleat PP100 | Ultra-Pleat PP-K |
|-------------------------------|------------------|-------------------|------------------|
| Filtration rates | 0,5 µm to 5 µm | 0,5 µm to 40 µm | 0,5 µm to 40 µm |
| Material | Glass Fibre | Polypropylene | Polypropylene |
| Maximum operating temperature | 80°C | 80°C | 80°C |
| Applications | | | |
| Chemicals | | • | • |
| Water | • | • | • |
| Electronics | • | • | |
| Food & Beverages | • | • | • |
| Industrial | | • | • |
| Pharmaceuticals | • | • | • |
| Breweries | • | • | |

PLEATED FILTER GLASS FIBRE

Ultra-Pleat GP-M



Technical Data

Media: Glass fibre

0,5 0,8 1 2 5

Efficiency: 99,98%

Temperature: 80°C

5" 10" 20" 30" 40"

Endcap: Code 7 or DOE (others available)

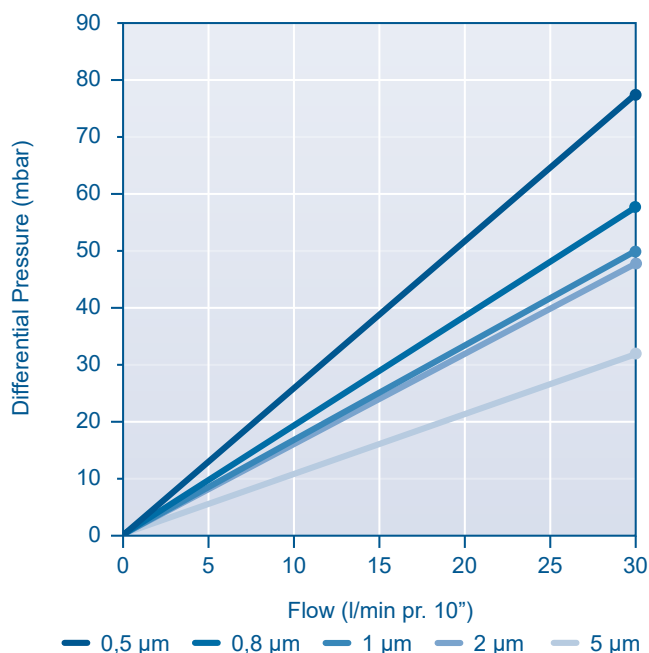
EPDM Gasket (others available)



A range of absolute rated cartridge filters from Ultrafilter, featuring the latest developments in borosilicate glass fibre filter media technology, GP-M Series cartridges are constructed from robust glass fibre and polypropylene filtration layers, offering removal ratings from 0.5 to 5 micron absolute.

GP-M Series cartridges are suitable for absolute removal of unwanted particulates and for prefiltration to membrane filters.

The GP-M Series cartridges incorporate a polypropylene prefiltration layer, combined with a high dirt capacity glass fibre media. This has the effect of longer service life, improved operating costs and smaller process footprint.



RECOMMENDED FILTER HOUSINGS



SK
Single



MK
Multi



PF-EG
Sanitary

PLEATED FILTER POLYPROPYLENE

Ultra-Pleat PP100



Ultra-Pleat PP100 cartridges are suitable for absolute removal of unwanted particulates and for prefiltration to membrane filters.

Ultra-Pleat PP100 is our general purpose pleated filter cartridge. Suitable for most applications in food and beverage industry.

The graded multi-layer polypropylene media provide prefiltration of the process fluid prior to the absolute rated final layer. The unique design of the PP100 cartridges helps to achieve lower running costs and a smaller process footprint.

Technical Data

Media: Polypropylene

Retention Rates:

| | | | | | | | | | |
|-----|-----|----|----|---|---|---|----|----|----|
| 0,5 | 0,8 | 1 | 2 | 3 | 5 | 7 | 10 | 15 | 20 |
| 30 | 40 | 60 | 90 | | | | | | |

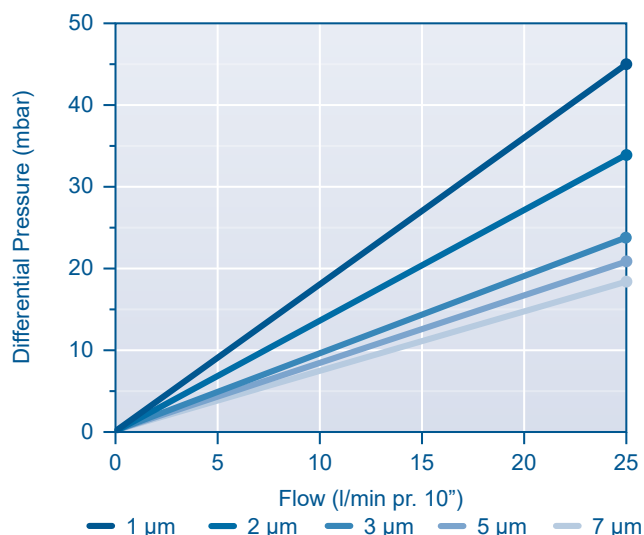
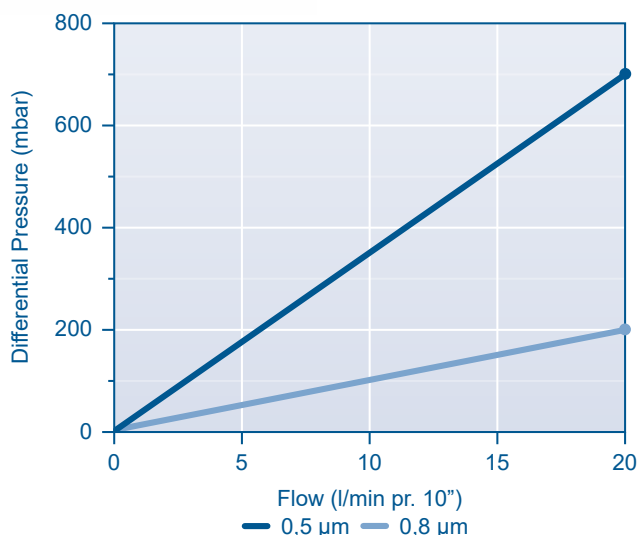
Efficiency: 99,98%

Temperature: 80°C

Lengths: 5" 10" 20" 30" 40"

Endcap: Code 7 or DOE (others available)

EPDM Gasket (others available)



RECOMMENDED FILTER HOUSINGS



SK
Single



MK
Multi



PF-EG
Sanitary

PLEATED FILTER POLYPROPYLENE

Ultra-Pleat PP-K



This filter is particularly suitable for viscous liquids. The wide pleating allows the fluid to pass at a lower differential pressure, and the structure ensures the filter media so that the filtering degree of viscous liquids is maintained even at breakage of the filter element.

The Ultra-Pleat PP-K are also highly resistant to integrity failure caused by steam sterilisation and have excellent chemical compatibility characteristics.

Technical Data

Media: Polypropylene

Retention Rate:

| | | | | | | | | | |
|-----|---|---|---|---|----|----|----|----|----|
| 0,5 | 1 | 2 | 3 | 5 | 10 | 15 | 20 | 30 | 40 |
| 75 | | | | | | | | | |

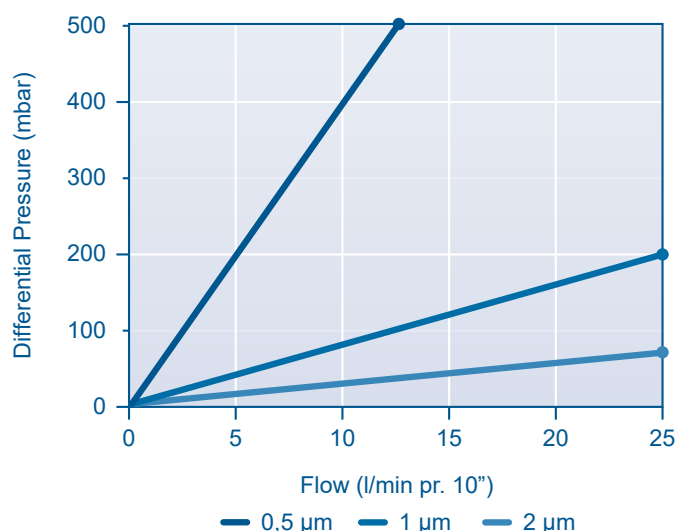
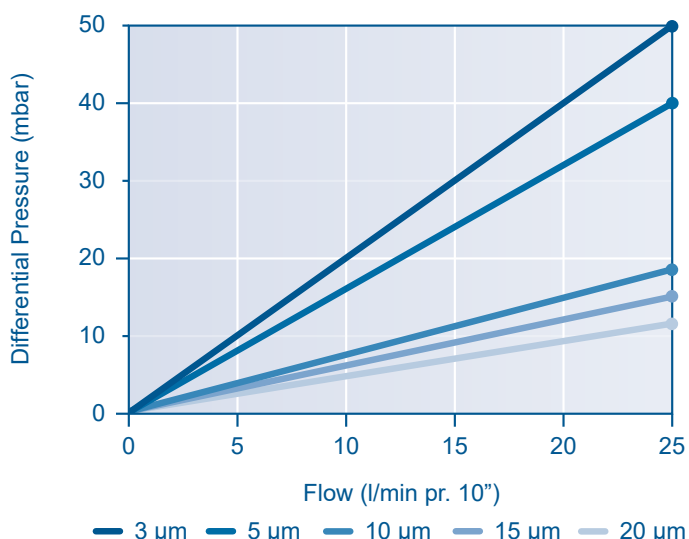
Efficiency: 99,98%

Temperature: 80°C

Lengths: 5" 10" 20" 30" 40"

Endcap: Code 7 or DOE (others available)

EPDM Gasket (others available)



RECOMMENDED FILTER HOUSINGS



SK
Single



MK
Multi



PF-EG
Sanitary

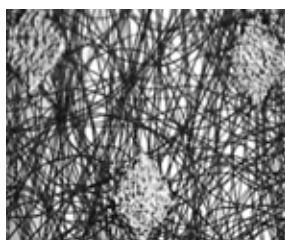
MEMBRANE FILTER CARTRIDGES



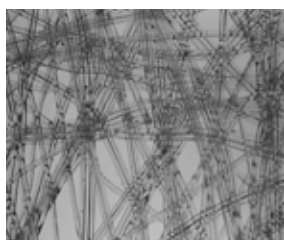
Ultra-Mem is our series of membrane filter cartridges with an effectivity of 99,999999%. Very often the final filtration step in high requirement productions will be one or more membrane filters. A high demand product in the pharmaceutical and veterinary industries, membranes are available in many lengths from 5" to 40" long, and they come in a number of materials and specifications to fit almost any filter housing and filtration task you might have.

Filtrations of corrosive or high turbidity media.

Most membranes can be regenerated with an autoclave or CIP steam, and may be used several times, as long as the filter integrity remains uncompromised.



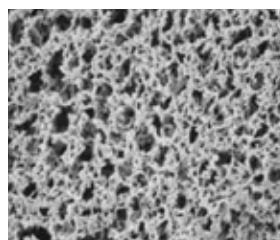
Polypropylene
Media



Glass Fibre
Media



Polyethersulphone
Media



Nylon
Media

SERIES & APPLICATIONS

The most demanding of all filtration tasks are completed through membranes. Almost always the final filtration step, membranes are used primarily in pharmaceutical, chemical and food and beverage industries, specifically for end-product or ingredient production at pharmaceutical or chemical production plants, and for very high quality filtered beer, wine and fine spirits, but are also used for the most demanding sterile water filtration.

A number of membranes are available in a number of retention rates, to meet the needs of your specific production and liquid media.

| Model | PF-PES | PF-PP | PF-BEV | PF-NYL | PF-AQUA |
|-------------------------------|---------------|--------------|---------------|---------------|---------------|
| Filtration rates | 0,04 - 1,2 µm | 0,1 - 0,2 µm | 0,2 - 0,65 µm | 0,2 - 0,45 µm | 0,2 - 0,45 µm |
| Material | PES | PP | PES | Nylon | PES |
| Maximum operating temperature | 60°C | 80°C | 60°C | 60°C | 60°C |
| Applications | | | | | |
| Chemicals | | • | | | |
| Water | • | | • | | • |
| Electronics | • | • | | | |
| Food & Beverages | • | | • | • | • |
| Industrial | • | • | | • | |
| Pharmaceuticals | • | | | • | |

GENERAL PURPOSE MEMBRANE

Ultra-Mem PF-PES



Technical Data

Media Polyethersulphone

Retention Rates:

0,04 0,1 0,2 0,45 0,65 1,2

Efficiency: 99,999999%

Temperature: 60°C

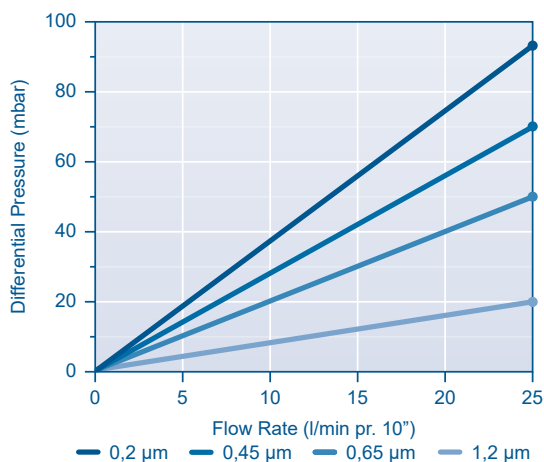
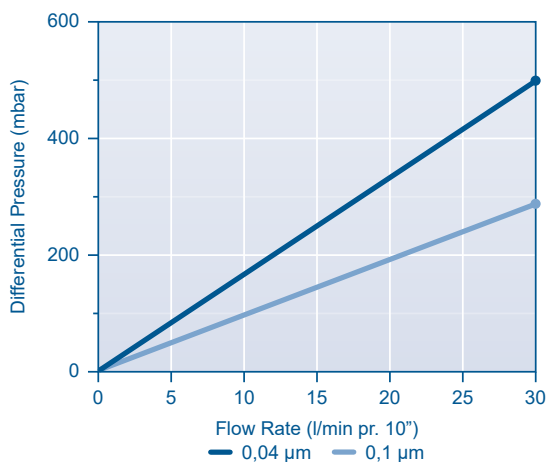
Lengths: 5" 10" 20" 30" 40"

Endcap: Code 7 (others available)

EPDM Gasket (others available)



Ultra-Mem PF-PES is our standard membrane for critical liquid filtration. Careful media selection ensures that PF-PES cartridges are also very suited to critical particle control down to 0.04 micron ratings. PF-PES cartridges offer high flux rates and low differential pressures, a feature common to polyethersulphone membranes. PF-PES cartridges are validated for bacterial removal according to HIMA guidelines and ASTM F838-05, with a log reduction value >7. They are therefore suitable for applications requiring sterilising grade filtration.



RECOMMENDED FILTER HOUSINGS



SK
Single



MK
Multi



PF-EG
Sanitary

MEMBRANE FOR CHEMICALS

Ultra-Mem PF-PP



Technical Data

Media: Polypropylene

Retention Rates: 0,1 0,2

Efficiency: 99,999999%

Temperature: 80°C

Lengths: 5" 10" 20" 30" 40"

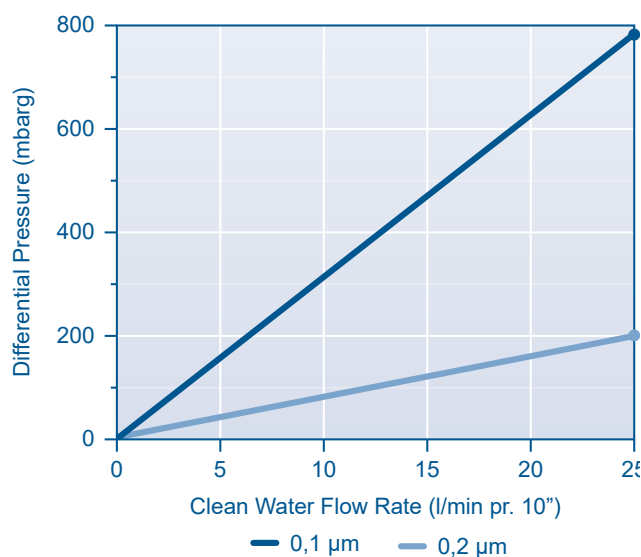
Endcap: Code 7 (others available)

EPDM Gasket (others available)



For solvent and aggressive chemical filtration applications, Ultra-Mem PF-PP cartridges offer a wide range of chemical compatibility. Suitable for the most demanding microfiltration applications, the cartridges can be used for the filtration of aggressive chemical solutions including acids, alkalis, solvents and etchants.

PF-PP cartridges can also be used for a wide range of sterile venting and gas filtration applications.



RECOMMENDED FILTER HOUSINGS



SK
Single



MK
Multi



PF-EG
Sanitary

MEMBRANE FOR BEVERAGES

Ultra-Mem PF-BEV



Technical Data

Media: Dual Polyethersulphone

Retention Rates: 0,2 0,45 0,65

Efficiency: 99,999999%

Temperature: 60°C

Lengths: 5" 10" 20" 30" 40"

Endcap: Code 7 (others available)

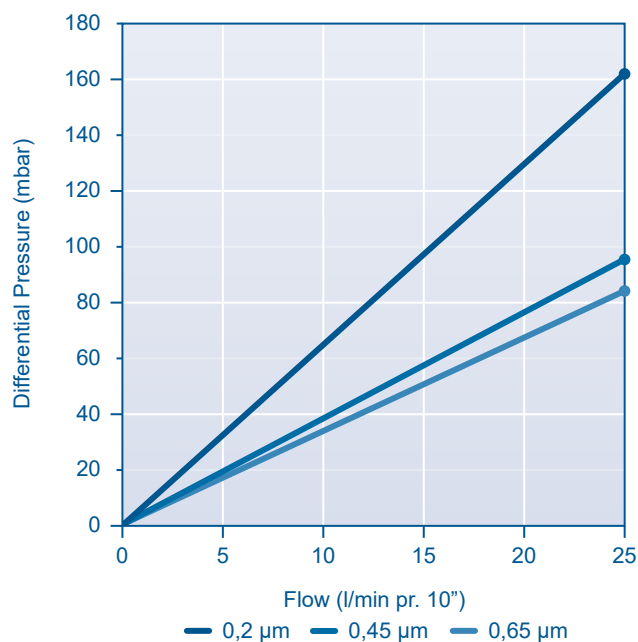
EPDM Gasket (others available)



Ultra-Mem PF-BEV is a membrane filter specially designed for filtration of beverages.

The Ultra-Mem PF-BEV 0,45 micron rated filter removes yeasts and moulds including the smallest spoilage bacteria such as *Oenococcus oeni*. The PF-BEV 0,65 micron rated filter removes contaminating yeast, moulds, and spoilage bacteria from beverages. The PF-BEV 0,2 micron rated cartridges provide sterile filtration for bottled water and other beverage grade water applications.

Ultra-Mem PF-BEV cartridges are validated for bacterial removal according to HIMA guidelines and ASTM F838-05, with a log reduction value >7. They are therefore suitable for applications requiring sterilising grade filtration.



RECOMMENDED FILTER HOUSINGS



SK
Single



MK
Multi



PF-EG
Sanitary

NYLON MEMBRANE FILTER

Ultra-Mem PF-NYL



Ultra-Mem PF-NYL cartridges are manufactured from a multi-layer combination of irrigation mesh, filter membrane, membrane support and drainage material. PF-NYL cartridges have optimal pleat geometry to maximise the available filtration area and to ensure an efficient flow through the cartridges.

Technical Data

Media: Nylon

Retention Rates: 0,1 0,2 0,45

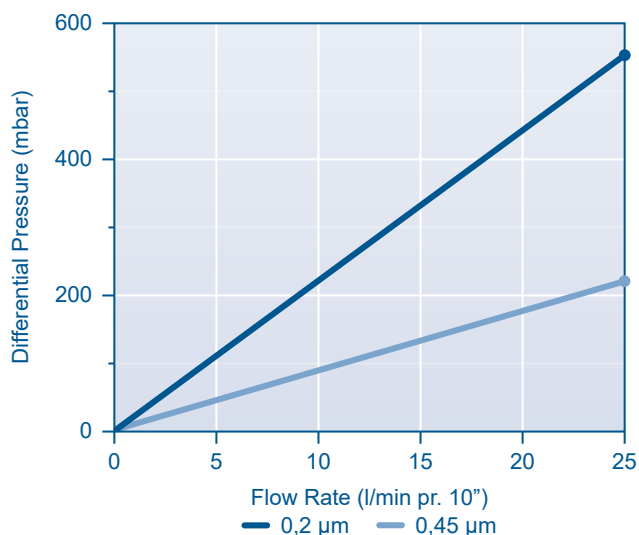
Efficiency: 99,999999%

Temperature: 60°C

Lengths: 5" 10" 20" 30" 40"

Endcap: Code 7 (others available)

EPDM Gasket (others available)



RECOMMENDED FILTER HOUSINGS



SK
Single



MK
Multi



PF-EG
Sanitary

MEMBRANE FOR WATER FILTRATION

Ultra-Mem PF-AQUA



Technical Data

Media: Polyethersulphone

Retention Rates: 0,2 0,45 0,65 1,2

Efficiency: 99,999999%

Temperature: 60°C

Lengths: 5" 10" 20" 30" 40"

Endcap: Code 7 (others available)

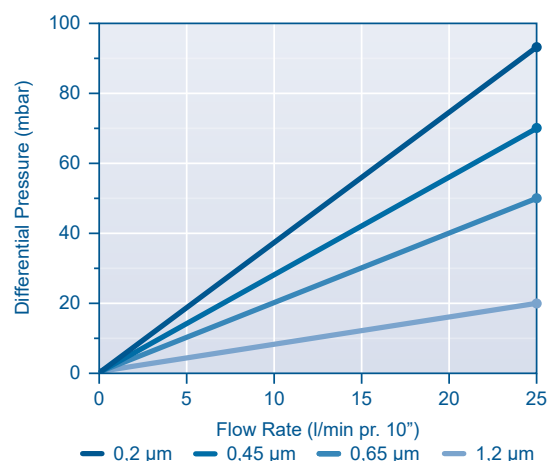
EPDM Gasket (others available)



Ultra-Mem PF-AQUA is a membrane specially suited for filtration of water products such as bottled water.

Careful media selection ensures that Ultra-Mem PF-AQUA cartridges are suited to retention down to 0,2 micron ratings. PF-AQUA cartridges offer high flow rates and low differential pressures, a feature common to polyethersulphone membranes.

All components used in the construction of Ultra-Mem PF-AQUA cartridges are FDA approved to 21CFR and meet or exceed the latest EC Directives for Food Contact.



RECOMMENDED FILTER HOUSINGS



SK
Single



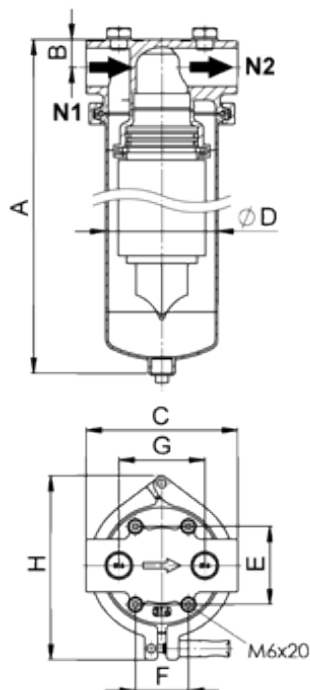
MK
Multi



PF-EG
Sanitary

SINGLE CARTRIDGE FILTER HOUSING

SK



Technical Data

Material: Stainless steel 304 or 316

Flow: 12-75 l/min

Pressure: 25 bar

Connection: 1" BSP

Temperature: 90°C

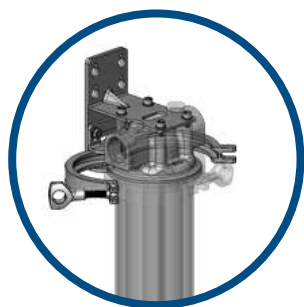
FPM Gasket (others available)

PED

Our filter housings are constructed in stainless steel, most with a heavy bolt-lid or solid clamp lock for the smaller housings. All housings are available in 316 and 304 stainless steel. Select sizes are available in heavy-duty plastic versions for off-shore and other applications.

Our single element filter housings for DOE have a specially fixed steel accessory to secure the elements from shaking. This also allows several length configurations, using the fixture extend or shorten the element length.

OPTIONS



Wall Mount



Pressure Gauge



Magnet Bar

| Model | Flow l/min | Connection in/out | Max. Temp. | Element Connection | Dimensions (mm) | | | | | | | |
|---------|---------------|----------------------|---------------|-----------------------|-----------------|----|-----|-------|----|----|----|-----|
| | | | | | A | B | C | D | E | F | G | H |
| SK 5" | 12 | 1" | 90°C | DOE 124-128 mm | 230 | 22 | 120 | ø88,9 | 62 | 42 | 68 | 146 |
| SK 10" | 25 | 1" | 90°C | DOE 248-254 mm | 367 | 22 | 120 | ø88,9 | 62 | 42 | 68 | 146 |
| SK 20" | 50 | 1" | 90°C | DOE 496-508 mm | 615 | 22 | 120 | ø88,9 | 62 | 42 | 68 | 146 |
| SK 30" | 75 | 1" | 90°C | DOE 762 mm | 863 | 22 | 120 | ø88,9 | 62 | 42 | 68 | 146 |
| SKB 5" | 12 | 1" | 90°C | Code 7 | 291 | 22 | 120 | ø88,9 | 62 | 42 | 68 | 146 |
| SKB 10" | 25 | 1" | 90°C | Code 7 | 427 | 22 | 120 | ø88,9 | 62 | 42 | 68 | 146 |
| SKB 20" | 50 | 1" | 90°C | Code 7 | 674 | 22 | 120 | ø88,9 | 62 | 42 | 68 | 146 |
| SKB 30" | 75 | 1" | 90°C | Code 7 | 915 | 22 | 120 | ø88,9 | 62 | 42 | 68 | 146 |

MULTI CARTRIDGE HOUSING DOE

MK



Technical Data

Material Stainless steel 316L

Surface: Electropolished

Flow: 125 - 1200 l/min

Pressure: 10 bar

Temperature: 100°C

Nitrile Gasket



The MK Series filter cartridge housings have a simple and robust construction and are fitted with a V-band clamp or swing bolt closure system for rapid opening and cartridge change-out.

Standard housings are configured to accept double open end style (DOE) cartridges.

These MK DOE housings use pressure plate assemblies including top cup and spring seal assemblies that permit the use of filter cartridges with single-length equivalents of 9 ¾ to 10 inches.

To adapt the housing to accept single open end (SOE), double O-ring cartridges with locating spear, the standard pressure plate is replaced with the SOE pressure plate (to be ordered separately).

The housing handles liquids at pressures up to 10 bar g and temperatures of up to 100 °C. All wetted surfaces are in 316L stainless steel. Other parts (V-band clamp, feet mountings, etc.) are supplied in 304 stainless steel or similar. MK filter housings are electropolished for a consistent, easy care finish.

Nitrile gaskets are supplied as standard. Other gasket materials are available as standard items and can be readily swapped with those supplied.

The 5 cartridge round housings are available with either male-threaded BSPT or flanged (PN16) connections. The 12 round housings are fitted with DIN PN16 DN80 flanges. All vents and drains are female BSP.

| Multi Cartridge Housings | Flow l/min | Connection | Max. Temperature | Element Connection |
|--------------------------|------------|--------------|------------------|--------------------|
| 5 MK 1 | 125 | 1 ½" or DN40 | 100°C | DOE |
| 5 MK 2 | 250 | 2" or DN50 | 100°C | DOE |
| 5 MK 3 | 375 | 2" or DN50 | 100°C | DOE |
| 5 MK 4 | 500 | 2" or DN50 | 100°C | DOE |
| 12 MK 2 | 600 | DN80 | 100°C | DOE |
| 12 MK 3 | 900 | DN80 | 100°C | DOE |
| 12 MK 4 | 1200 | DN80 | 100°C | DOE |

MECHANICAL POLISHED FILTER

PF-EG



Technical Data

Material: Stainless steel 304L or 316L

Surface: 0,8 / 0,4

Flow: 12-3000 l/min

Pressure: 10 bar

Temperature: 150°C

EPDM Gasket



Sanitary filter housings are made with no surface impurities, no thread or nooks in the filter housings, that may be harder to get clean.

We have sanitary filter housings as both single and multi element versions, and deliver these stainless steel filter housings in stainless steel 304L or 316L mechanical polished down to 0,8 or 0,4 Ra.

| Model | Flow l/min | Connection in/out | | | Filter Element | |
|------------|---------------|-------------------|-----------|-------------|----------------|-----|
| | | DIN 11851 | Tri-clamp | Weld | Size | Qty |
| PF-EG 0012 | 12 | DN25 | DN25 | N/A | 5" Code 7 | 1 |
| PF-EG 0025 | 25 | DN25 | 1" | 25,4 x 1,65 | 10" Code 7 | 1 |
| PF-EG 0050 | 50 | DN25 | 1" | 25,4 x 1,65 | 20" Code 7 | 1 |
| PF-EG 0075 | 75 | DN25 | 1" | 25,4 x 1,65 | 30" Code 7 | 1 |
| PF-EG 0100 | 100 | DN25 | 1" | 25,4 x 1,65 | 40" Code 7 | 1 |
| PF-EG 0150 | 150 | DN40 | 1,5" | 38,1 x 1,65 | 20" Code 7 | 3 |
| PF-EG 0225 | 225 | DN40 | 1,5" | 38,1 x 1,65 | 30" Code 7 | 3 |
| PF-EG 0250 | 250 | DN50 | 2" | 50,8 x 1,65 | 20" Code 7 | 5 |
| PF-EG 0300 | 300 | DN40 | 1,5" | 38,1 x 1,65 | 40" Code 7 | 3 |
| PF-EG 0375 | 375 | DN50 | 2" | 50,8 x 1,65 | 30" Code 7 | 5 |
| PF-EG 0400 | 400 | DN50 | 2" | 50,8 x 1,65 | 20" Code 7 | 8 |
| PF-EG 0500 | 500 | DN50 | 2" | 50,8 x 1,65 | 40" Code 7 | 5 |
| PF-EG 0600 | 600 | DN50 | 2" | 50,8 x 1,65 | 30" Code 7 | 8 |
| PF-EG 0800 | 800 | DN50 | 2" | 50,8 x 1,65 | 40" Code 7 | 8 |
| PF-EG 0900 | 900 | DN65 | 2,5" | 63,5 x 1,65 | 30" Code 7 | 12 |
| PF-EG 1200 | 1200 | DN65 | 2,5" | 63,5 x 1,65 | 40" Code 7 | 12 |
| PF-EG 1350 | 1350 | DN65 | 2,5" | 63,5 x 1,65 | 30" Code 7 | 18 |
| PF-EG 1800 | 1800 | DN65 | 2,5" | 63,5 x 1,65 | 40" Code 7 | 18 |
| PF-EG 2250 | 2250 | DN80 | 3" | 76,2 x 1,65 | 30" Code 7 | 30 |
| PF-EG 2400 | 2400 | DN65 | 2,5" | 63,5 x 1,65 | 40" Code 7 | 24 |
| PF-EG 3000 | 3000 | DN80 | 3" | 76,2 x 1,65 | 40" Code 7 | 30 |

STAINLESS STEEL MESH FILTER

P-SM / P-SMp



Technical Data

Media: Stainless Steel

Retention Rate: 1 - 840 µm

Efficiency: 99,99%

Max. Differential Pressure: 5 bar

Start-up Differential Pressure: 0,15 bar.

Temperature: 60°C

5" 10" 20" 30" 40"

EPDM Gasket (others available)



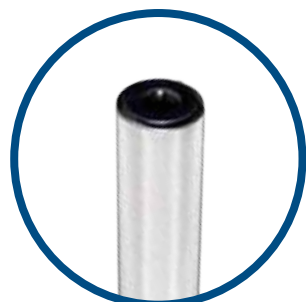
Ultrafilter offers a varied range of stainless steel mesh filters in the P-SM series. This product is produced in 316L stainless steel by default, for the best possible protection and efficiency of your application.

Mesh filter elements have the great advantage they can be regenerated by ultrasonic bath or backwashing the system. After regeneration, the filter will be ready for use again.

P-SM mesh filters are very robust filters, with a temperature tolerance up to 200°C, and differential pressure tolerance of up to 5 bar(g), and with a start up differential pressure of max 0,15 bar (g).

Stainless steel mesh filters are usable in food and beverage applications, and are additionally often used for particle retention in cosmetic, chemical, water treatment and syrup filtration. Many more applications apply.

END CAPS



DOE



Code 7



UF / Code Y



Code 3

FILTER HOUSING FOR P-SM

As the P-SM is suitable for both air/gas and liquid, different filter housings are available for the element to suit different applications.

| Model | FUCB | PF-EG | P-EG |
|-------------------------------|-----------|-----------|-----------|
| Applications | Liquid | Liquid | Air & Gas |
| Material | 304 / 316 | 304 / 316 | 304 / 316 |
| Maximum operating temperature | 90°C | 150°C | 200°C |