



EWELLIX

MAKERS IN MOTION

BUILDING ON FIFTY YEARS OF EXCELLENCE

Ewellix is a global innovator and manufacturer of linear motion and actuation solutions. Today, our state-of-the-art linear solutions are designed to increase machine performance, maximise uptime, reduce maintenance, improve safety and save energy.

We engineer solutions for industrial automation, medical equipment, mobile machinery, distribution and a wide range of other industrial applications.



Technology leadership

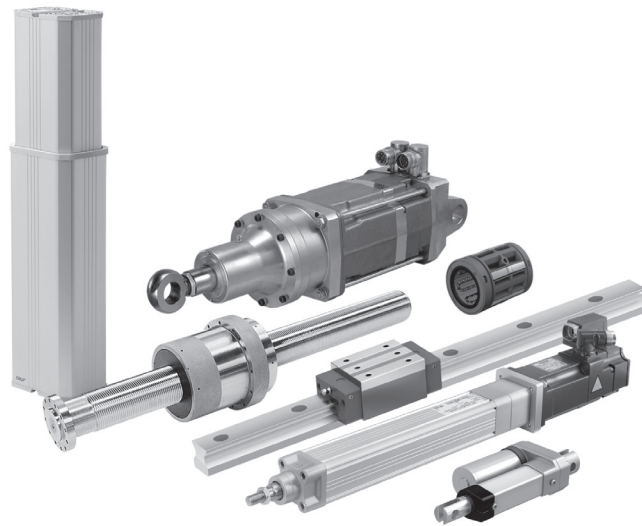
We earned our reputation through decades of engineering excellence. Our journey began over 50 years ago as part of the SKF Group, a leading global technology provider, with the world's first precision ball and roller screw factories. Our history with SKF provided us with the expertise to continuously develop new technologies and use them to create cutting edge products that offer our customers a competitive advantage.

In 2019, we became independent from SKF and changed our name to Ewellix. We are proud of our heritage. This gives us a unique foundation on which to build an agile business with engineering excellence and innovation as our core strengths.

Global presence and local support

With our global presence, we are uniquely positioned to deliver standard components and custom-engineered solutions, with full technical and applications support around the world. Our skilled engineers provide total life-cycle support, helping to optimise the design, operation and maintenance of equipment to improve productivity and reliability while reducing costs. At Ewellix, we don't just provide products; we engineer integrated solutions that help customers realise their ambitions.

The Ewellix Group has 1.400 employees, 16 sales units and nine factories providing products and solutions for our customers around the world, each with their own unique set of requirements.



Founded over fifty years ago as part of the SKF Group, we began pushing the boundaries of engineering, to find new and innovative ways of meeting manufacturing challenges. Today, we have a new name, but our focus remains on being a preferred partner for linear products and solutions.

Our success is based on state-of-the-art products and solutions. We are committed to building on this reputation by providing ongoing development and knowledge to provide a competitive advantage, along with the world-class support that our customers have come to expect.

Our people, products and solutions support customers in implementing the energy efficient solutions of tomorrow.

Daniel Westberg
CEO of EWELLIX

WHAT DRIVES US FORWARD

Our industry is in motion; pushing towards solutions that reduce environmental impact and leverage new technology. From sensor integrated products to big data analysis, we focus on automation and new manufacturing processes; allowing cost reduction, enhanced product performance and quality. We provide technical and manufacturing expertise to overcome our customers' challenges. We are makers in motion.

Our vision

Our ambition is to be the preferred engineering partner for energy efficient motion solutions.

Ewellix is our new brand, but we are backed by decades of insight and experience. We apply our linear expertise to create motion solutions inside customer applications.

United by values and history

COMMITTED

We understand the importance of what we do and share the same goals. We are ambassadors for our work and brand. We develop our business with high ethics and respect for people, environment and society.

AGILE

We are open minded and know how to adapt to new situations. We strive for excellence and will always do our best to provide the smartest and most appropriate solutions.

COLLABORATIVE

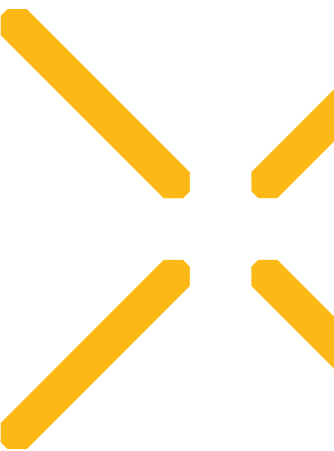
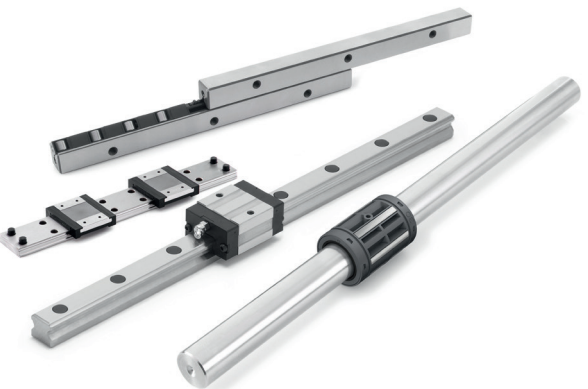
We work together and apply our knowledge to create value. We establish strong and lasting relationships to anticipate and support our business partners' needs.

ENGINEERING FOR THE FUTURE



We work in a wide range of industries, where our solutions provide key functionality for mission critical applications. For the medical industry, we provide precision components for use in core equipment. In an industrial distribution setting, we supply linear expertise to our partners, empowering them to serve customers with greater efficiency.

Our deep knowledge of mobile machinery provides powerful and reliable electromechanical solutions for the harshest conditions. Our unparalleled understanding of industrial automation systems is based on decades of research into advanced automation components and techniques.



MEDICAL APPLICATIONS AND INDUSTRIAL AUTOMATION

We have a unique understanding of linear equipment and how it's integrated in customers' applications to provide the best performance and machine efficiency.

Medical industry, the need for safety and reliability

In a world with an ageing population, we provide high quality components and systems for core medical equipment found in imaging, surgical and laboratory applications, which are essential to reliable and timely care. Our products adhere to the strictest safety standards and offer our customers quicker time to market with high-level engineering support and application knowledge.

Industrial automation, the push for efficiency

Manufacturers continue to push automation for enhanced performance, reduced energy use and lower maintenance. We give customers a competitive edge when they need flexibility, product customisation and faster time to market. We provide a wide variety of linear motion components and electromechanical actuators for equipping any automation application, helping our customers reduce footprint, energy use and maintenance. We offer excellence in material forming, material joining and automation handling applications.

MOBILE MACHINERY AND INDUSTRIAL DISTRIBUTION



We assist our customers by creating equipment that runs faster, longer and that is safe and sustainable.

Mobile machinery, reliability in motion

Manufacturers face increasing challenges related to cost control, machine electrification and more stringent regulations on environmental impact.

We offer innovative actuation solutions that increase productivity and reduce the environmental impact for hard-working mobile machinery. We push for lower energy consumption, while adopting new technology such as position feedback and IoT sensors.

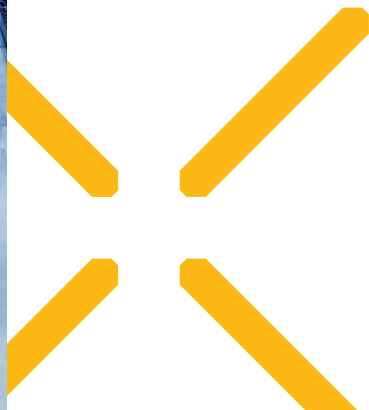
Working with leading OEMs, we continue to provide a complete range of electromechanical solutions to equip any mobile machinery, whether that is agricultural, lifting equipment or special purpose vehicles.

Industrial distribution, our partners over time

Our industry is constantly seeking innovation and our distributors face new requests daily. Our partners can count on us to provide technical support and linear expertise faster than ever before.

Ewellix distributors are carefully selected to provide the highest level of service to our customers, delivering the level of attention and quality customers have come to expect, while safeguarding the authenticity of our products.

A broad selection of linear motion products is available through our distributors with a full offering of standard products, as well as custom solutions. These products range from linear ball bearings, shafts and rails cut to length, carriages and small actuators, to complete electromechanical actuation solutions designed to replace hydraulics and pneumatics.





ewellix.com
© Ewellix

All contents of this publication are the property of Ewellix, and may not be reproduced or given to third parties (even extracts) without permission. PUB CO-01001-EN-August 2019

Certain image(s) used under license from Shutterstock.com and Gettyimages.com.
SKF and SKF logo are trademarks of the SKF Group.