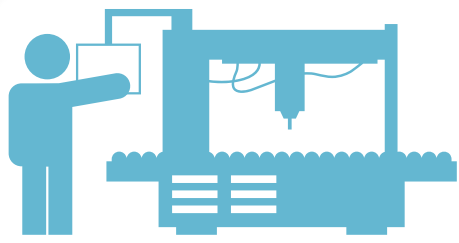
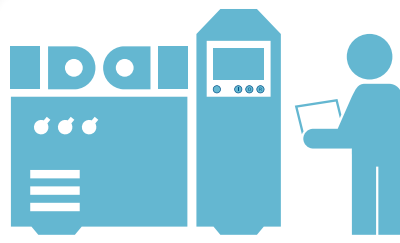


Next generation machine operation will change. Do you know ...

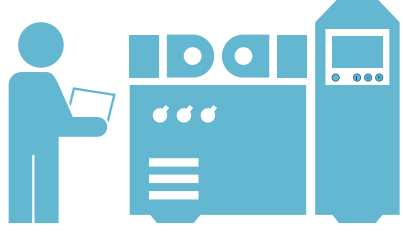
How to operate machine in future



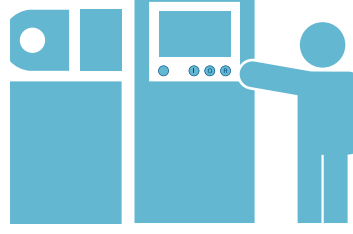
Over **25%** of all machine manufacturers want to use multi-touch HMIs.¹⁾



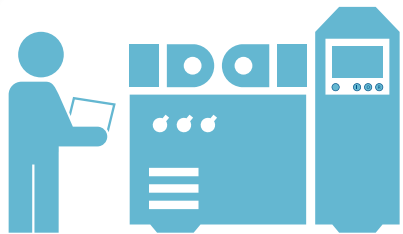
10% of all machine manufacturers have already integrated smartphones and tablets into their controls.¹⁾



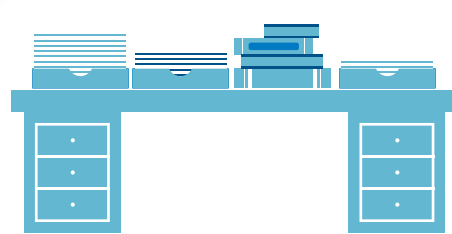
77% of all machine manufacturers are planning to integrate tablets and smartphones into their controls.¹⁾



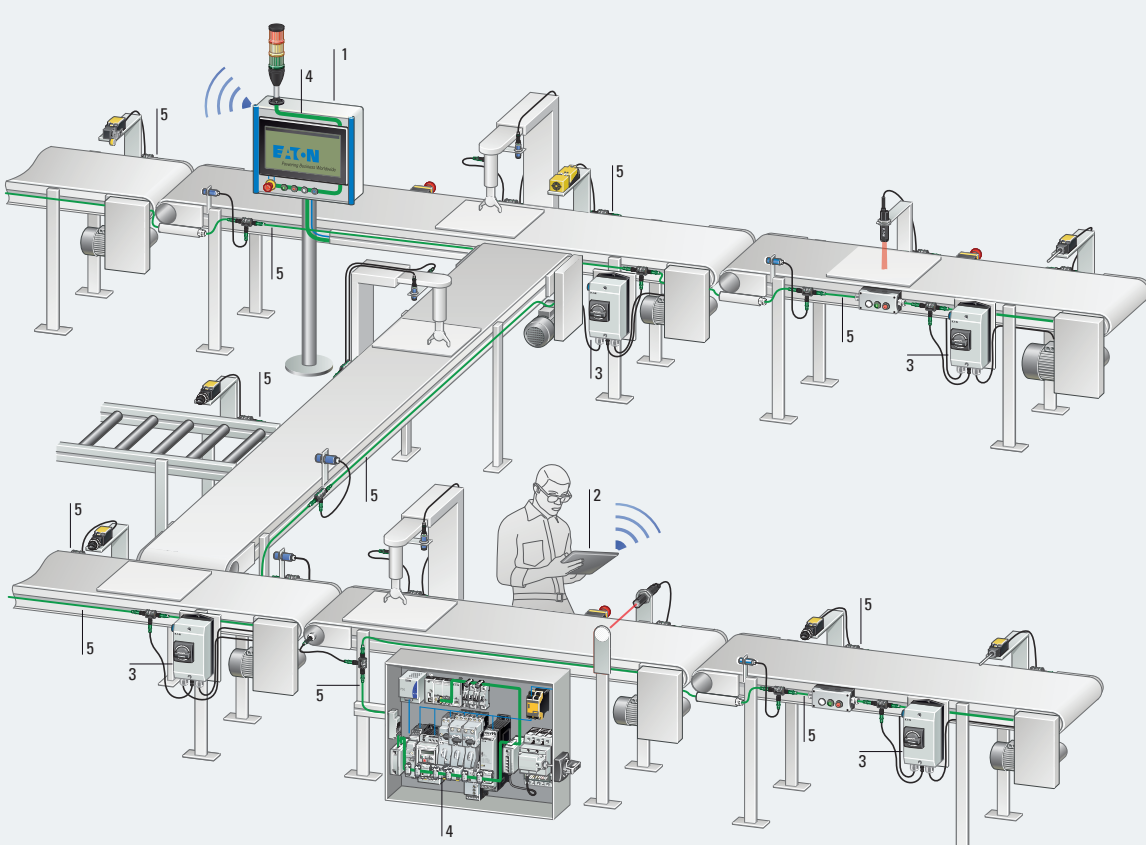
Over **39%** of all pilot devices used in the USA have a mounting aperture of 30 mm and are significantly larger than the devices commonly used in Europe for 22 mm.²⁾



80% of companies think that their production employees will be using mobile communications equipment for their work in the future.³⁾



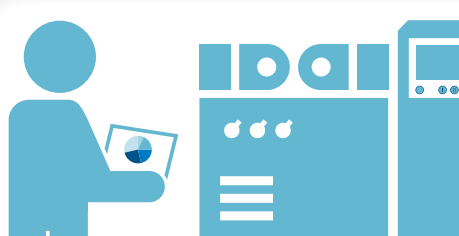
47% of companies believe that using mobile end devices will make it possible to dramatically reduce documentation work.³⁾



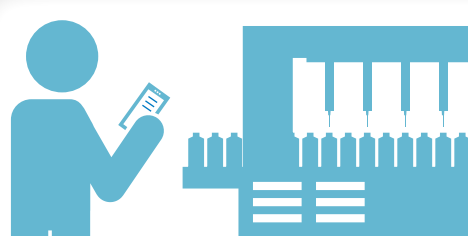
1 Control Terminal with multi-touch display XV
2 Mobile equipment operation via tablet or smartphone (on the spot or remotely)
3 IP65 motor starter, soft starter or variable speed starter

4 SmartWire-DT in the control cabinet
5 SmartWire-DT with IP67 I/O modules in the field

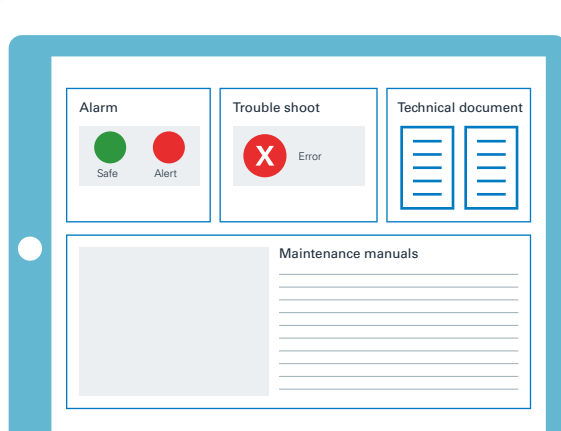
How to improve productivity



73% of all companies think that mobile end devices hold enormous potential as a result of making it possible to use up-to-date production data.³⁾



72% rate the potential successfully relying on early information in order to avoid short-notice production scheduling interventions as being "high" or "very high."³⁾



Machine builder, who want to use apps, will use them for

92% for alarms & status display
67% for trouble shooting
62% for technical documentation
61% for maintenance manuals.¹⁾

Next generation machine operator



88% of all young people between the ages of 12 and 19 own a smartphone.⁵⁾



50% of employees between the ages of 18 and 31 believe that they use better IT tools privately than at their company.⁴⁾

Get more information on
www.eaton.com/en/hmi

Sources

- 1) Marktstudie Maschinenbedienung 2016 Dipl.-Betriebswirtin (FH) Michaela Rothhöft
- 2) IHS Study for Pushbuttons, 2014
- 3) Fraunhofer Institut IAO Study
- 4) Gajar et al. 2013, p. 62
- 5) Feierabend et al. 2014, p. 45, in Disterer