

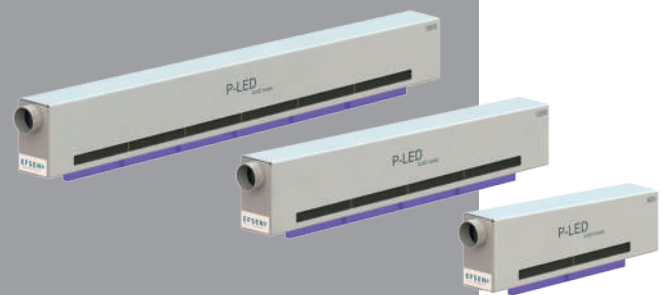
# P-LED

## ICAD<sup>®</sup> inside

**EFSEN**  
UV & EB TECHNOLOGY

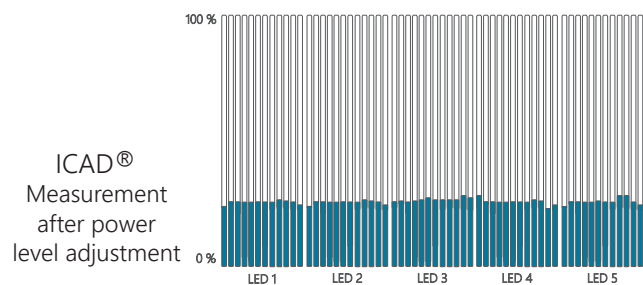
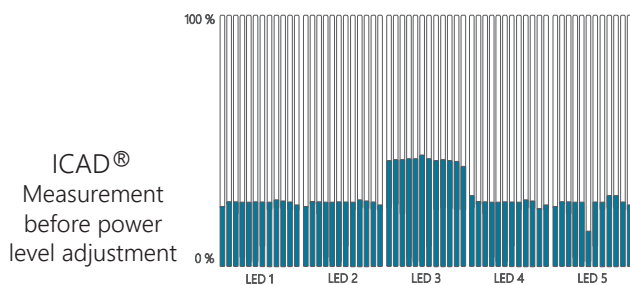
The solution for ultimate process stability in UV LED production

The P-LED is a UV LED curing unit that emits UV LED light over a width. You get the benefits of one unit with extremely high self-control for optimal UV production. The ICAD<sup>®</sup> Technology stands for Inline Continuous Automatic Dynamic measuring device and improves your process control, so you always know that your UV LED system is performing according to set value. This increases quality, uptime and reduces the risk of errors, all while saving energy and getting rid of ozone and mercury.



### ICAD<sup>®</sup> inside

An integrated part of the P-LED is the ICAD<sup>®</sup> Technology. This uniquely developed technology makes it possible to do inline and automated power level adjustment for a uniform and specific power distribution over the full UV LED array. The ICAD<sup>®</sup> Technology gives you the benefit of continuous measuring during your production. Enabling you to secure a stable uniform and documented UV process.



### All in one unit

- ✓ More uptime
- ✓ Uniform curing
- ✓ Minimal maintenance
- ✓ ICAD<sup>®</sup> inside
- ✓ Energy saving
- ✓ 365, 385, 395 & 405nm
- ✓ No ozone and mercury
- ✓ Integrated air/cooling distribution
- ✓ Integrated user interface

**EFSEN UV & EB TECHNOLOGY** has been designing high-end UV curing system with the user and quality in focus since 1986. The P-LED is designed with ICAD<sup>®</sup> Technology so that users always have certainty and full control of the correct output being applied to the product. That is what we mean by – user and quality in focus.

## Curing width

The P-LED is available in widths from 225mm to 3.000mm effective curing widths.

## Air cooling versatility

P-LED needs clean air free from dust and above the dew point. P-LED can be supplied as a right or left driven solution as well as with top mounted air intake. This all depends on the machine it has to be mounted on.



## Plug & Run installation

The P-LED system is an easy scalable Product on a modular base. The system consists of:

- P-LED, the lamp head including multiple internal LED modules. It can be mounted fixed to the line with maintenance access on top or as slide in module.
- P-LED Power, this is the power supply for one internal LED module. Supplied in 19" rack size.
- P-LED Safety, the communication module that has all the required power connections and safety switches. Supplied in 19" rack size.
- P-LED IQ is the control units which includes a Siemens S7 PLC and a touchscreen HMI interface to operate the system manually or via external signals.



## The P-LED comes in three different power levels, that makes is suitable for different speeds of production

P-LED-8-Series Simply choose P-LED-8 series for a powerful, high dose and fully flexible system that gels and cures most LED applications.

P-LED-9-Series Is your application running high speeds, or do you have a request for higher intensity for better penetration, then the P-LED-9-Series is the right solution for you.

P-LED-8HD Is a high dose version of the P-LED-8. This increases the speed potential of up to 80% compared to P-LED-8.

## Configurations

UV-LED width	225mm	300mm	...	1200mm	1350mm	...	3000mm
P-LED-8-series	P-LED-8-225	P-LED-8-300	...	P-LED-8-1200	P-LED-8-1350	...	P-LED-8-3000
P-LED-9-series	P-LED-9-225	P-LED-9-300	...	P-LED-9-1200	P-LED-9-1350	...	P-LED-9-3000
P-LED-8HD-series	P-LED-8HD-225	P-LED-8HD-300	...	P-LED-8HD-1200	P-LED-8HD-1350	...	P-LED-8HD-3000

## Electrical requirements and connections

P-LED: 3x400V AC 50hz 3x32A (3P+N+PE) 5pol CEE plug

P-LED is Siemens S7-1200 PLC controlled

Prepared for PROFINET

## Dimensions

P-LED 225-900 Height: 305mm, Width 132mm, Length: curewidth + 275mm

Version: 15.03.19

## Get in touch

Skovlytoften 33 | DK-2840 Holte

efsen@efsen.dk | phone: +45 45650260