



VERDERFLEX OEM

Any questions? You may still have questions and/or comments after reading this brochure. Please feel free to contact us on +44 (0)1924 221 020. You can also respond via email to info@verderflex.com. For more information about Verderflex please visit our website www.verderflex.com

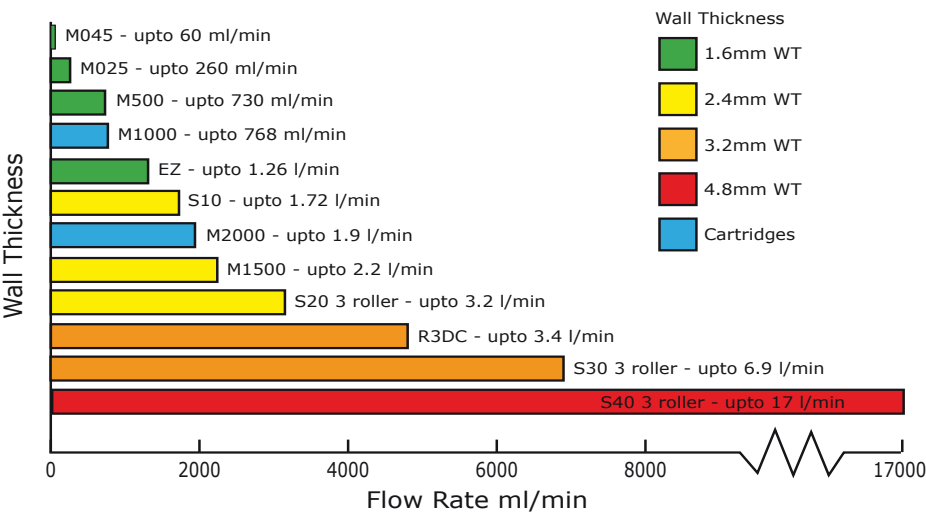
Overview



Verderflex OEM

Verderflex® OEM pumps are compact and easy to maintain, they have quick change tube systems to keep maintenance time to an absolute minimum. With flow rates ranging from 1.6 ml/min to 17 l/min, there is a Verderflex OEM pump for most low pressure pumping requirements.

Quick Pump Selection



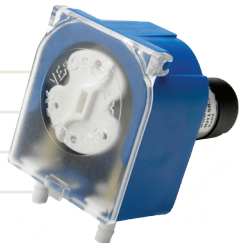
M045

Max. Flow rates	60 ml/min
Tube WT	1.6mm
Max. ID	4.0mm
Power Supply	12 & 24V DC & 230V 50Hz



M025

Max. Flow rates	260 ml/min
Tube WT	1.6mm
Max. ID	4.8mm
Power Supply	12/24V DC



M500

Max Flow rates	730 ml/min
Tube WT	1.6mm
Max. Bore	4.8mm
Power Supply	12 & 24V DC 230V 50Hz



M1000/M2000

Max Flow rates	1.9 l/min
Tube Type	Dovetail
Max. ID	8.0mm
Power Supply	12V & 24V DC & 230V 50Hz



Verderflex Tube Selection

Verderprene - Food and Medical Tubing

This opaque, cream coloured tube is the most popular choice for tube pumps.

Platinum Cured Silicone - For Higher Purity

Platinum cured Silicone is a translucent, odourless tubing with low residuals.

Tygon® and Fluran® tubing material are available on request.

Features and Benefits

Peristaltic pumps are excellent problem solving pumps, ideal when the product is particularly abrasive, corrosive, shear sensitive or viscous.

- Sterility by Design
- No Slip for Repeatable Dosing
- Dry running for Ease of Use
- No Seals
- Ideal for off Gassing Liquids
- Gentle Action for Sensitive Liquids
- Low Maintenance Costs
- Accurate Dosing
- Self Priming

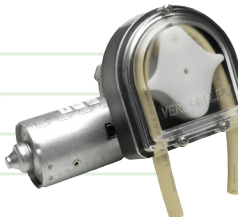
EZ Easy Tube Load

Max Flow rates	1.26 l/min
Tube WT	1.6mm
Max. ID	8.0mm
Power Supply	12/24V DC



M1500

Max Flow rates	2.2 l/min
Tube WT	2.4mm
Max. ID	8.0mm
Power Supply	12 & 24V DC & 230V 50Hz



R3DC

Max Flow rates	3.4 l/min
Tube WT	3.2mm
Max. ID	9.6mm
Power Supply	24V DC



S10, S20, S30, S40 Easy Tube Load

Max Flow rates	17 l/min per channel
Tube WT	2.4mm, 3.2mm and 4.8mm
Max. ID	9.6mm, 15.9mm, 25.4mm
Power Supply	24/48V DC BLDC

