

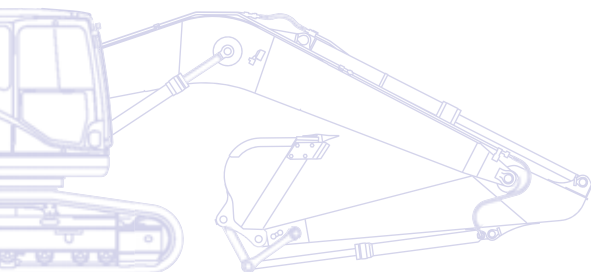
# KOMATSU

PRELIMINARY



**PC**  
**228us**

## Hydraulic Excavator **PC228USLC-10**



**ENGINE POWER**  
123 kW / 165 HP @ 2.000 rpm

**OPERATING WEIGHT**  
22 - 24 tonnes

**BUCKET CAPACITY**  
max. 1,49 m<sup>3</sup>

## **Total versatility**

- Ideal for a wide range of applications
- 6 working modes
- Wide choice of options
- Built-in versatility
- Ultimate operator control

## **Quality you can rely on**

- Reliable and efficient
- Rugged design
- Komatsu-quality components
- Extensive dealer support network

## **Powerful and environmentally friendly**

- Low consumption EU Stage IIIB/EPA Tier 4 interim engine
- Fuel-saving engine and hydraulic technology
- Eco-gauge and idle caution
- Reduced wastage



Komatsu Wireless  
Monitoring System



Complimentary maintenance  
program for customers

## First-class operator comfort

- Fully adjustable heated air suspension seat
- Low noise design
- Low vibration levels
- Large, widescreen hi-res display monitor
- Improved operator convenience



*Safe operation in confined areas: Short tail swing radius and short implement swing radius.*



*The compact tail design minimises the risks of rear impact and lets the operator concentrate fully on his work.*



*Engine and pump control technology lower total fuel consumption.*

## Highest safety standards

- Safe SpaceCab™ ROPS compliant with ISO 12117-2:2008
- Rear view camera
- Optimal jobsite safety
- Safe access, easy maintenance
- Falling Object Protection System (FOPS) optional



*Eco-gauge and idle caution*

# Hydraulic Excavator

## PC228USLC-10

### ENGINE

Model ..... Komatsu SAA6D107E-2  
 Type ..... Common rail direct injection, water-cooled, emissionised, turbocharged, after-cooled diesel  
 Engine power  
     at rated engine speed ..... 2.000 rpm  
     ISO 14396 ..... 123 kW / 165 HP  
     ISO 9249 (net engine power) ..... 116 kW / 156 HP  
 No. of cylinders ..... 6  
 Bore x stroke ..... 107 x 124 mm  
 Displacement ..... 6,69 ltr

### ENVIRONMENT

Engine emissions ..... Fully complies with EU Stage IIIB and EPA Tier 4 interim exhaust emission regulations  
 Noise levels  
     LwA external ..... 102 dB(A) (2000/14/EC Stage II)  
     LpA operator ear ..... 72 dB(A) (ISO 6396 dynamic test)  
 Vibration levels (EN 12096:1997)\*  
     Hand/arm .....  $\leq 2,5 \text{ m/s}^2$  (uncertainty  $K = 0,49 \text{ m/s}^2$ )  
     Body .....  $\leq 0,5 \text{ m/s}^2$  (uncertainty  $K = 0,25 \text{ m/s}^2$ )  
 \* for the purpose of risk assessment under directive 2002/44/EC, please refer to ISO/TR 25398:2006.

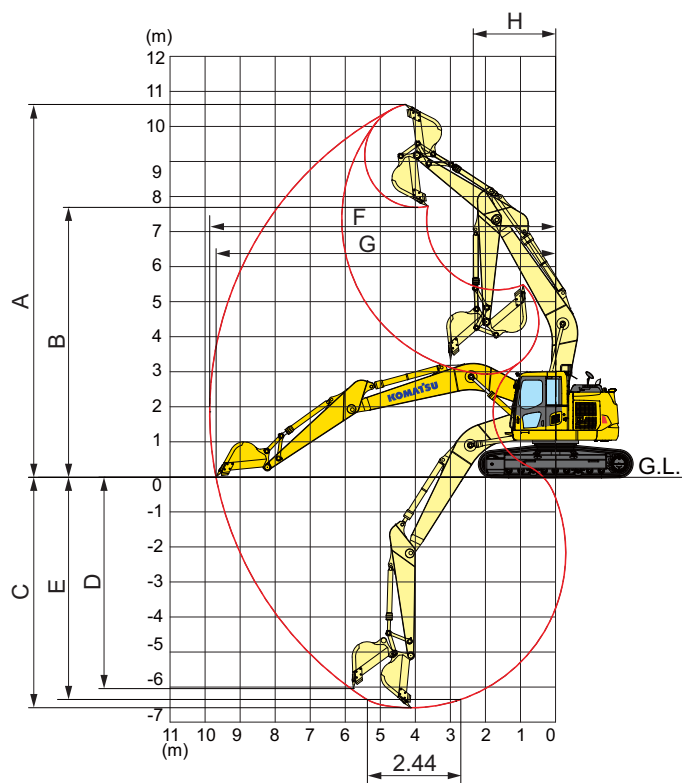
### UNDERCARRIAGE

Construction ..... X-frame centre section with box section track frames  
 Track assembly  
     Type ..... Fully sealed  
     Shoes (each side) ..... 49  
     Tension ..... Combined spring and hydraulic unit  
 Rollers  
     Track rollers (each side) ..... 9  
     Carrier rollers (each side) ..... 2

### HYDRAULIC SYSTEM

Type ..... HydrauMind. Closed-centre system with load sensing and pressure compensation valves  
 Main pump ..... Variable-capacity piston pump  
 Pumps for ..... Boom, arm, bucket, swing, and travel circuits  
 Maximum pump flow ..... 475 ltr/min  
 Hydraulic motors:  
     Travel ..... 2 x axial piston motor with parking brake  
     Swing ..... 1 x axial piston motor with swing holding brake  
 Relief valve settings:  
     Implement ..... 380 bar  
     Travel ..... 380 bar  
     Swing ..... 300 bar  
     Pilot ..... 33 bar

### WORKING RANGE



#### ARM LENGTH

2,9 m

A	Max. digging height	10.700 mm
B	Max. dumping height	7.825 mm
C	Max. digging depth	6.620 mm
D	Max. vertical wall digging depth	5.980 mm
E	Max. digging depth of cut for 2,44 m level	6.370 mm
F	Max. digging reach	9.875 mm
G	Max. digging reach at ground level	9.700 mm
H	Min. swing radius	2.310 mm