

HYDRAULIC CLAMPING

*Automated clamping
with hydraulic
high pressure vices*



NC 8 HYDRO

Ideal for use on 3-axis and 4-axis machines

in sizes 90 / 125 M + L / 160/ 200



High pressure vice NC8-90 hydraulic
max. clamping force 24 kN at 240 bar
clamping stroke 4,5 mm / volume max. 4,5 cm³
clamping range 0 - 217 mm
Art.No. 6921908000655



High pressure vice NC8-125 M hydraulic
max. clamping force 40 kN at 240 bar
clamping stroke 4,5 mm / volume max. 7,5 cm³
clamping range 0 - 313 mm
Art.No. 6921918000655



High pressure vice NC8-125 L hydraulic
max. clamping force 40 kN at 240 bar
clamping stroke 4,5 mm / volume max. 7,5 cm³
clamping range 0 - 445 mm
Art.No. 6921918010655

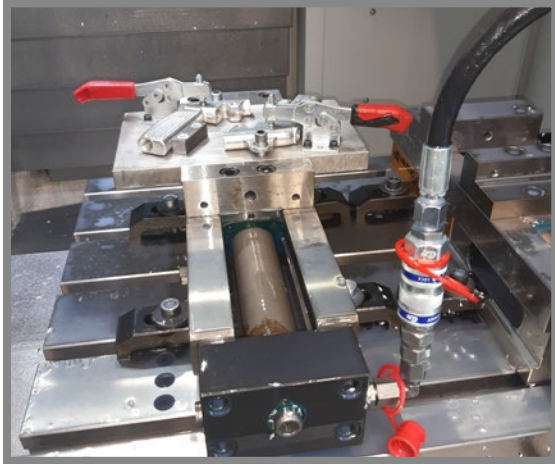


High pressure vice NC8-160 hydraulic
max. clamping force 60 kN at 240 bar
clamping stroke 4,5 mm / volume max. 11,3 cm³
clamping range 0 - 435 mm
Art.No. 6921928000655



High pressure vice NC8-200 hydraulic
max. clamping force 60 kN at 240 bar
clamping stroke 4,5 mm / volume max. 11,3 cm³
clamping range 0 - 435 mm
Art.No. 6921928010655

Examples of use



Field of application

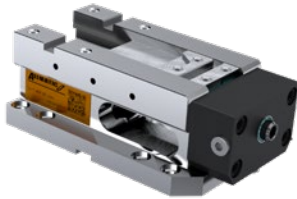
- Horizontal installation – suitable for vertical CNC-controlled milling machines
- Ideal for use on 3-axis and 4-axis machines
- For automation of machining centres – particularly suitable for batch production
- The hydraulic spindle also enables the use of support jaws with which a wide range of unmachined parts, from flame-cut and sawn materials through to complex castings, can be clamped securely and economically
- Suitable for materials with a strength of up to approx. 1000 N/mm²

Product features

- Jaw interface compatible with NC8/LC-TC series
- Standard with mounting holes for zero point clamping system, Pitch 200
- Proven maintenance-free and encapsulated high-pressure spindle, thus minimised cleaning requirements
- The clamping force is generated by the hydraulic pressure of a hydraulic unit (a hydraulic source is needed to operate the vice)
- The clamping force is steplessly adjusted by regulating the hydraulic pressure on the hydraulic unit. A hand crank is provided for coarse adjustment of the clamping range
- The spindle contains a single-acting hydraulic piston and an additional Belleville spring assembly

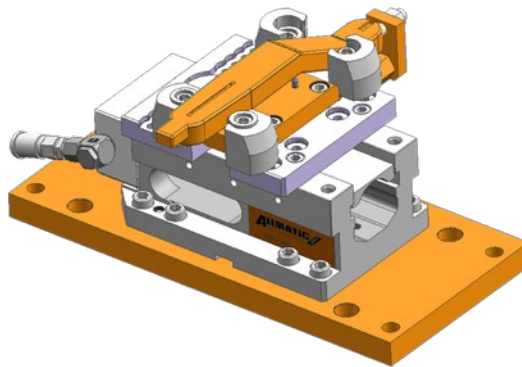
T-REX 125 HYDRO

Ideal for use on 5-axis machining centres



High pressure vice T-REX 125 hydraulic
max. clamping force 40 kN at 240 bar
clamping stroke 4,5 mm / volume max. 7,5 cm³
clamping range angular 0 - 185 mm
clamping range round Ø 0 - 190 mm
Art.No. 6921888000655

Example of use



Field of application

- Horizontal installation – suitable for vertical CNC-controlled milling machines
- Ideal for use on 5-axis machining centres
- Reliable and fast clamping of unmachined parts, flame-cut and sawn materials with gripper jaws
- Clamping of parallel pre-machined workpieces with optional step jaws
- For automation of machining centres – particularly suitable for batch production

Product features

- Jaw width: 124,4mm
- Steplessly adjustable with external hydraulic unit
- Standard with mounting holes for zero point clamping system, pitch 200
- Optimum accessibility for 5-sided machining thanks to the combination of compact base and large clamping range
- Stamping and clamping in a single process, in the working area itself, without any additional accessories
- The movable/pivot support jaw allows different workpiece contours to be clamped
- Gripper studs can be changed without tools and are easy to adjust by hand
- High-pressure spindle with power intensification