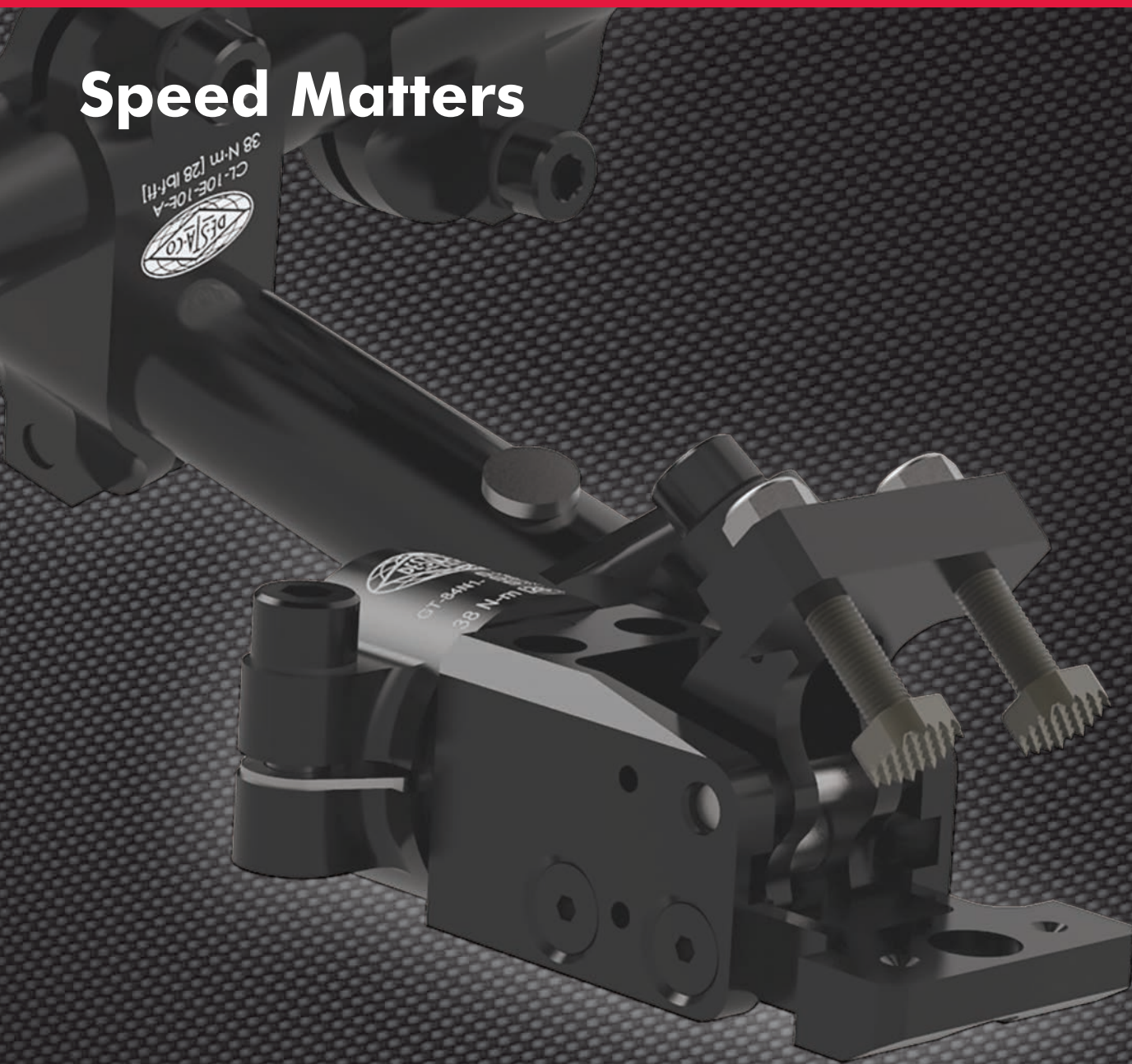


Speed Matters



ACCELERATE 
COLLECTION

Accelerate® Press Room Gripper

destaco.com



A DOVER COMPANY



THE BEST PRODUCTS. UNMATCHED SERVICE. WORLDWIDE.

With a support network spanning the globe, DE-STA-CO offers consistent, comprehensive service to any location in the world. Whether your operations are localized or span multiple continents, you will always have access to the highest levels of customer service and technical support.

Since our founding in 1915, DE-STA-CO continues to provide innovative workholding and automation solutions. We are honored to work alongside our global customers to achieve our key mission, which encompasses:

- Providing world-class service and operational excellence
- Increasing customer productivity through customized solutions
- Developing products to meet unique application needs
- Consistency in our on-time delivery promise
- Ensuring top value throughout our product catalog

DE-STA-CO provides productivity solutions to a diverse range of market segments

- Aerospace
- Automotive/transportation
- Consumer products
- Food and packaging
- Plastic injection molding
- Medical
- Defense



Accelerate® Press Room Gripper

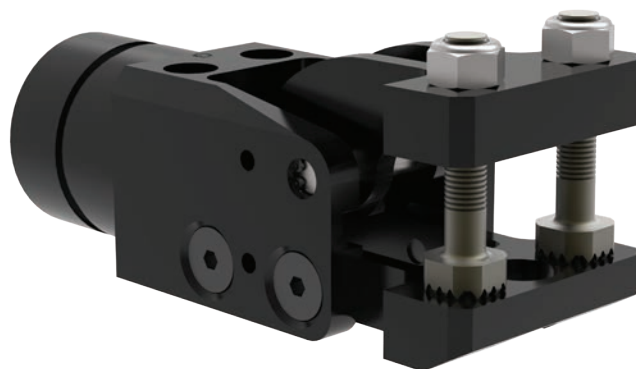
DE-STA-CO innovates press room sheet metal stamping solutions with lightweight tools to produce more stamped parts per hour.

60% lighter (0.27kg vs 0.56kg)

12% smaller foot print

60% faster actuation (33ms vs 50ms)

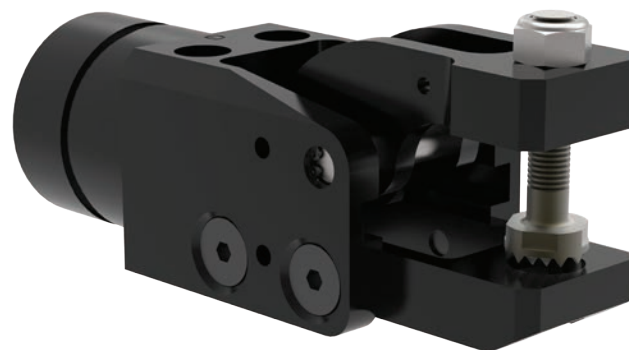
100% DE-STA-CO innovation



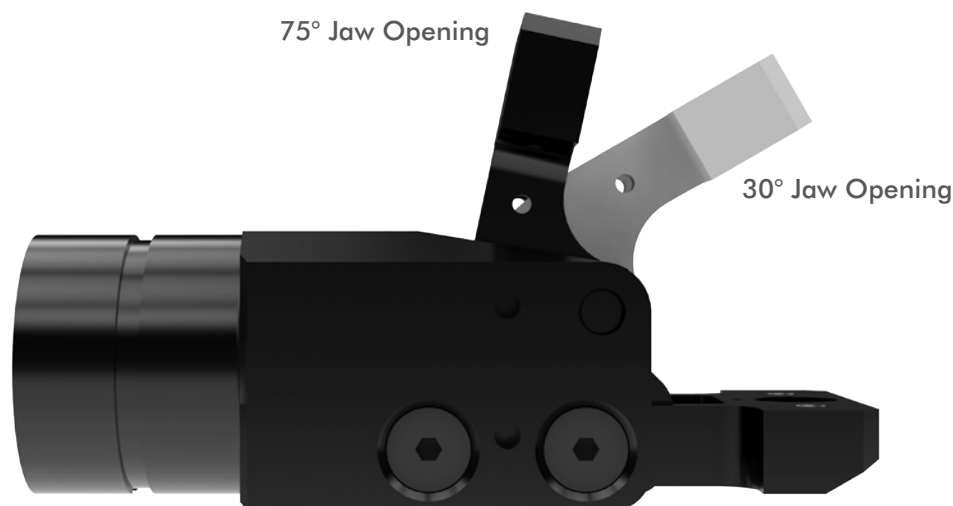
Double Tip
Lower Fixed Jaw

Innovative Features

- Compact and powerful - grip force (up to 1000N at 5 bar)
- No protrusion of top jaw mechanism below body on fixed bottom jaw version
- Integrated Clamp-Loss Protection
- One-step tip adjustment with optional tool



Single Tip
Lower Fixed Jaw



75° Jaw Opening

30° Jaw Opening

Zero Protrusion Fixed Jaw

Patent Pending

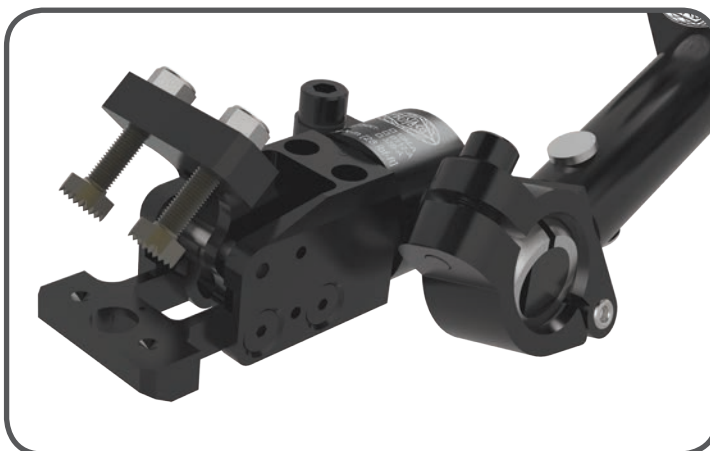
Accelerate® Collection Lightweight Solutions

The Accelerate® Press Room Gripper is designed to compliment the Accelerate® Collection, providing a complete lightweight and flexible tooling system.



ACCELERATE 
COLLECTION

The Accelerate® Collection can handle parts of any size and shape throughout the stamping process.



This sheet metal gripper is half the weight, smaller and faster than our closest competition without sacrificing grip force (up to 1000N at 5 bar)



Accelerate® Press Room Gripper

Series 84N1 Easy Integration - Speed Matters



Serrated tip option is used with double tip jaw style. Single tip jaw style requires Serrated Sensor Tip.



Urethane Tip



Serrated Sensor Tip



Peen Tip



Point Tip



Serrated Tip



Clamp-Loss Prevention Feature



Series **84N1** Ordering Information

84N1 - N - 030 - F - A - 02 - 1 - P - 1 - 0

Base Model

Ports

Description
N NPT
G BSPP
T BSPT

Jaw Configuration

Description
F Fixed Bottom Jaw


Opening Angle

Description
030 30° Opening Angle
075 75° Opening Angle
XXX Customer specified opening angle in 5° increments to a maximum of 75°


Jaw Style and Tip Mount

Description
A Single Tip Threaded
C Double Tip Threaded


030





075



A



C



Series 84N1 Ordering Information

Part Presence Detection

0
P
N

Description

None
PNP
NPN

P or N

4mm Sensing Range

Sheet Stops

0
1

Description

None
Included

Left Sensor Side Mount

0
1
2
3

Description

None
Double Blank
PNP Sensing
Double Blank
NPN Sensing
Infrared PNP
Sensing

Right Sensor Side Mount

0
1
2
3

Description

None
Double Blank
PNP Sensing
Double Blank
NPN Sensing
Infrared PNP
Sensing

1 or 2

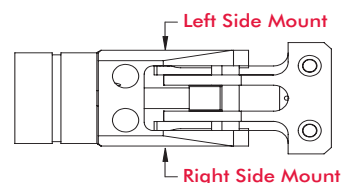
3

0.4 mm Double blank minimum per sheet thickness

Tips

Description

- 00 None
01 Serrated for double tip jaw style
02 Serrated for use with part present sensor single tip jaw style
03 Point Tip
04 Peen Tip
05 Polyurethane Tip (Durometer 70A)



01

02

03

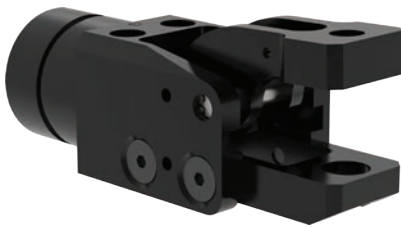
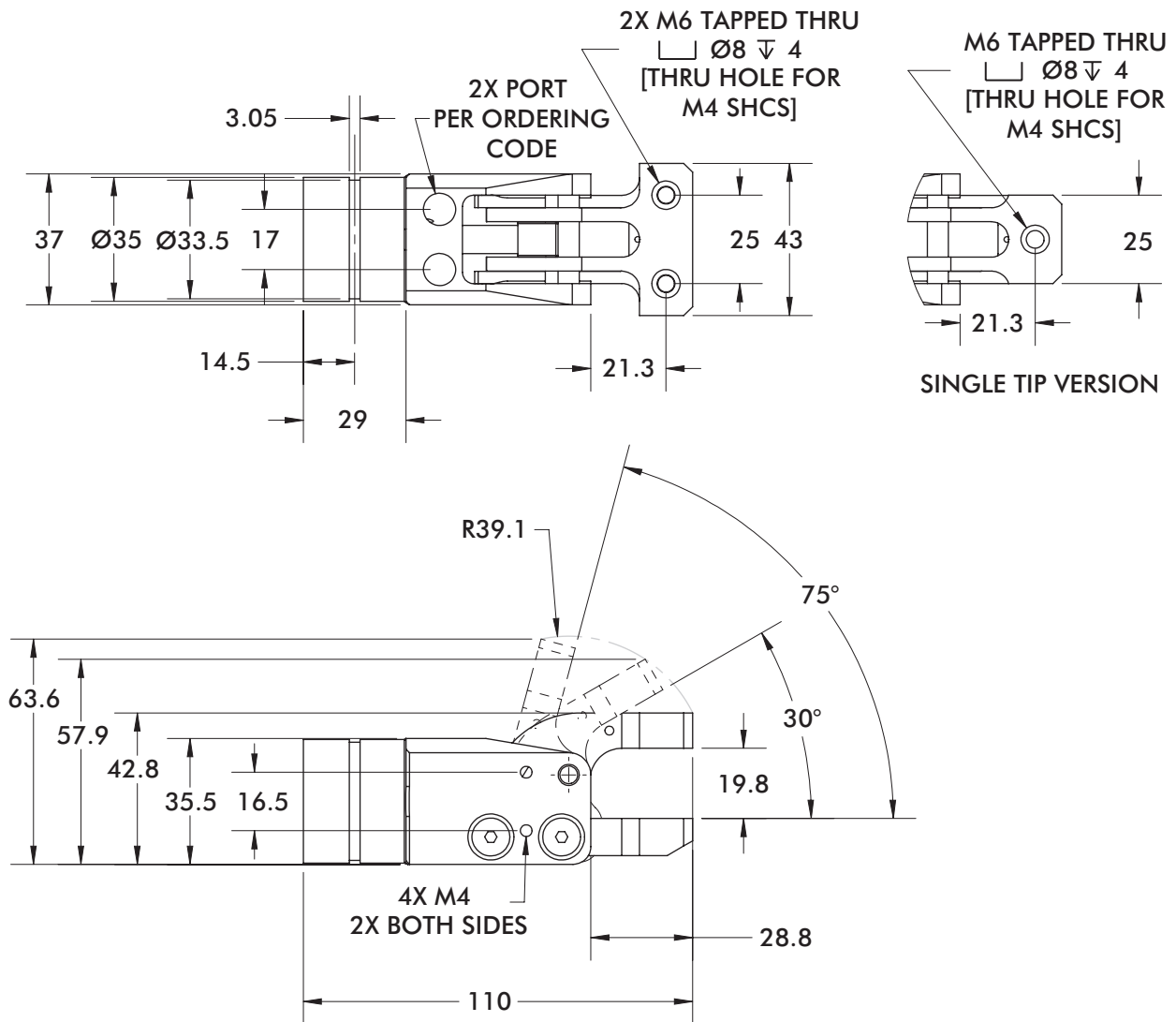
04

05

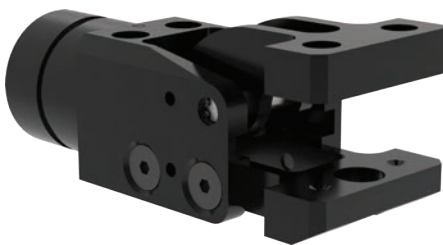
Description	Part Number	Single Tip Jaw	Double Tip Jaw
Polyurethane Tip	8JD-1005-1	Yes	Yes
90 Degree Point Tip	8JD-1001-1	Yes*	Yes
Serrated Tip	8JD-1002-1	Yes*	Yes
Peen Tip	8JD-1003-1	Yes*	Yes
Serrated Notched Top (for Jaw Style "A")	8JD-1004-1	Yes	No

*These options will work on single tip jaws but WILL activate the part present sensor which will result in a false positive if that option is used.

Series 84N1 Specifications and Dimensions

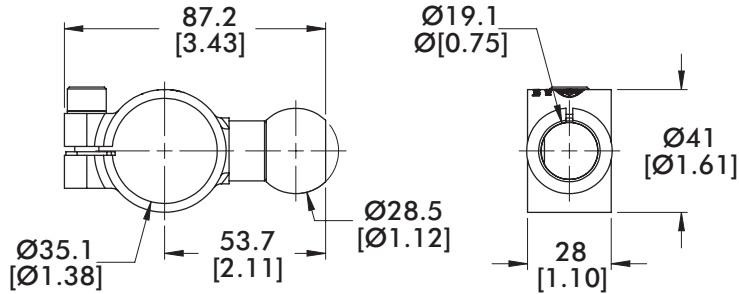
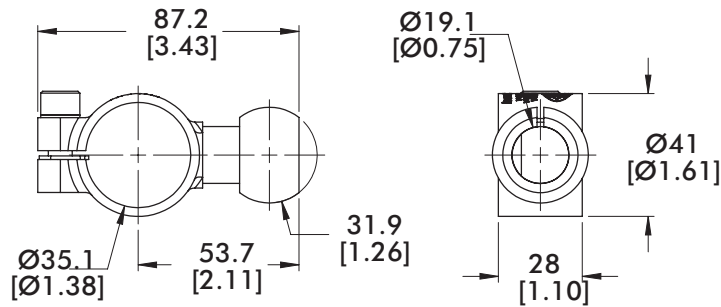
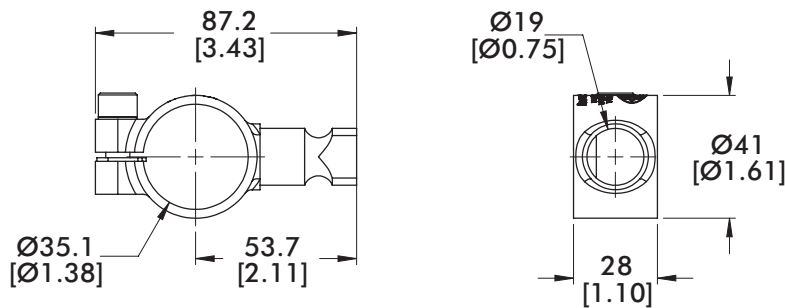
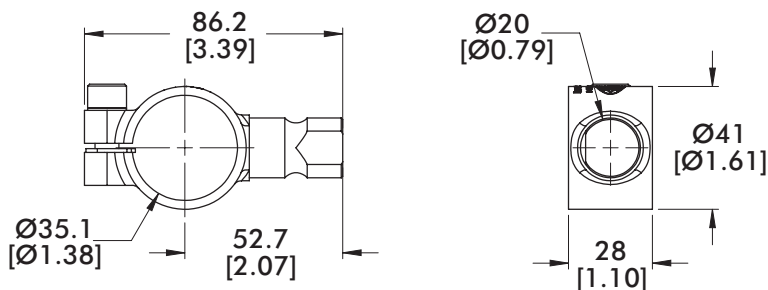


Single Tip



Double Tip

Specification	Unit	
Grip Force at 5 bar	N	Up to 1000
Weight (FC00 version)	Kg	.27
Size L x W x H (closed)	mm	110 x 43 x 43
Size L x W x H (open)	mm	110 x 43 x 64
Actuation Time	ms	33
Life	cycles	5 million
Minimum Operating Pressure	bar	1
Opening Angles (others available upon request)		30°, 75°
Piston Ø	mm	25
Air Consumption/Cycle	L	.015

Series **84N1** Mounts**GT-84N1-B112-A****GT-84N1-32B-A****GT-84N1-19M-A****GT-84N1-20M-A****Mount Accessories****Part Number**

Gripper 1.125in (28.5mm) Ball Mount

GT-84N1-B112-A

Gripper 32mm Ball Mount

GT-84N1-32B-A

Gripper 19mm Applecore Mount

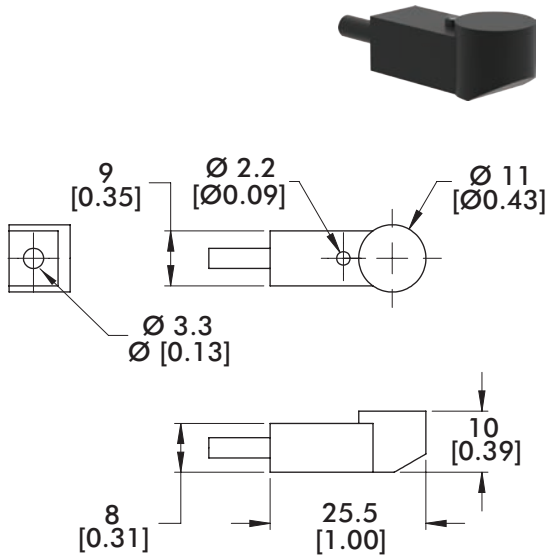
GT-84N1-19M-A

Gripper 20mm Applecore Mount

GT-84N1-20M-A

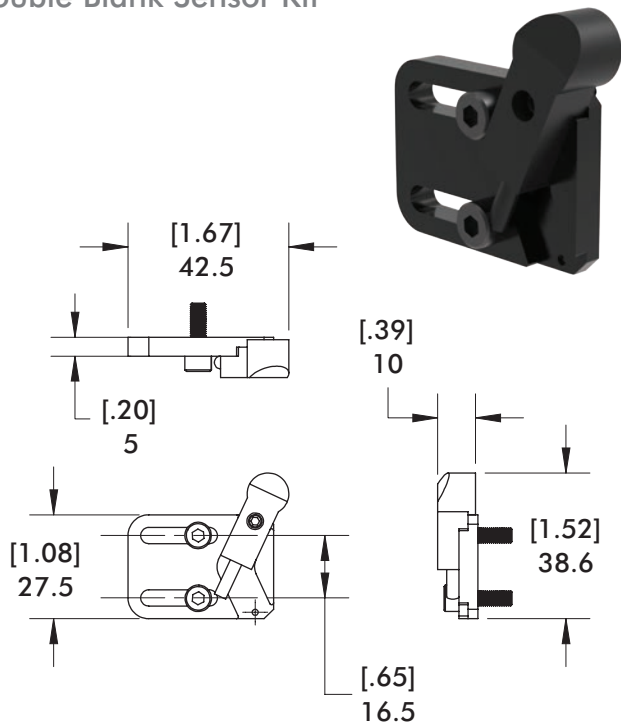
Series 84N1 Sensing Options

Jaw Part Present Sensor or Double Blank Sensor (see kit)



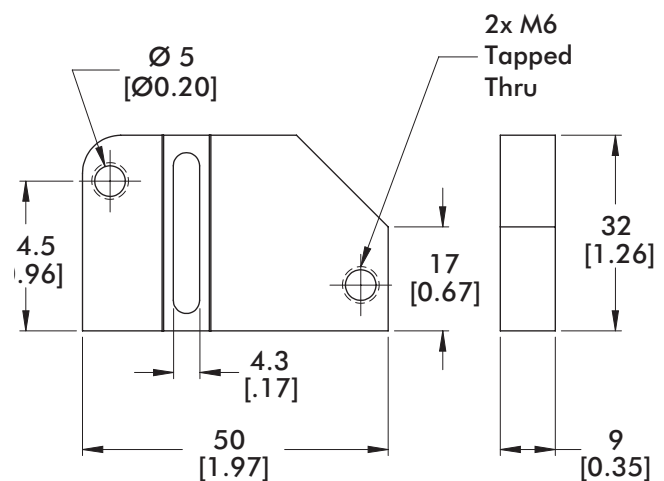
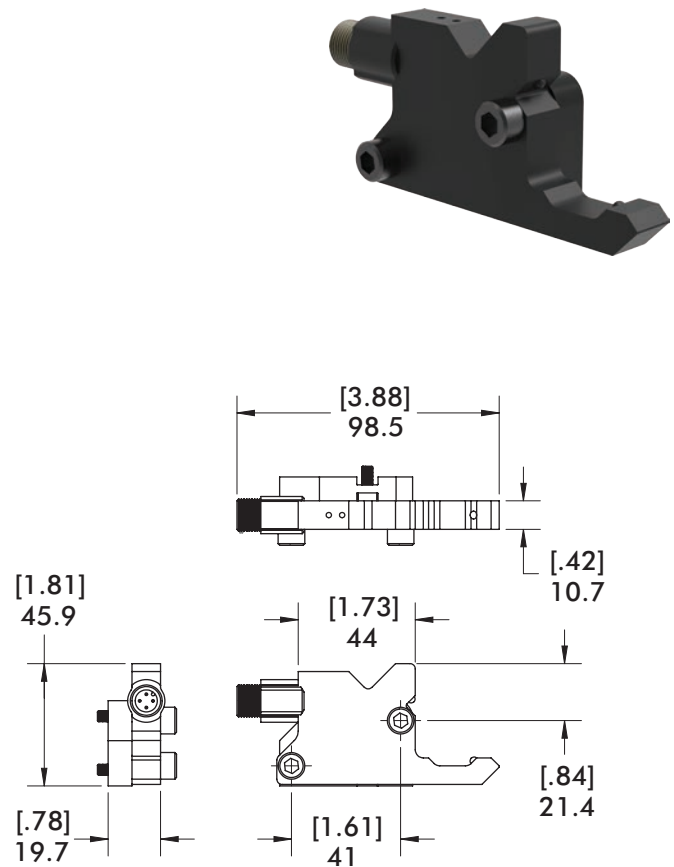
Description	Part Number
PNP Inductive Part Present Sensor Kit	8EA-1024-1
NPN Inductive Part Present Sensor Kit	8EA-1025-1

Double Blank Sensor Kit



Description	Part Number
PNP Inductive Double Blank Sensor Kit	8EA-1026-1
NPN Inductive Double Blank Sensor Kit	8EA-1029-1

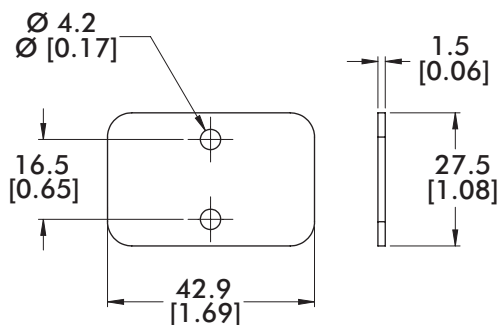
Infrared Part Present Sensor and Mounting Adapter



Description	Part Number
Infrared Part Present Sensor Kit	8EA-1023-1

Series 84N1 Accessories

Sheet Stop Option



Description

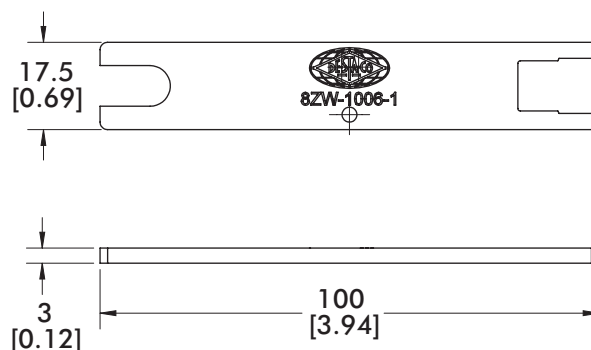
Sheet Stop Kit

Includes socket head cap mounting screws

Part Number

8MH-1003-1

One-Step Easy Tip Adjustment Tool



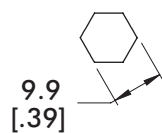
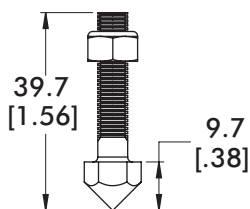
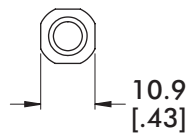
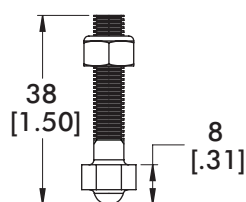
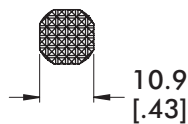
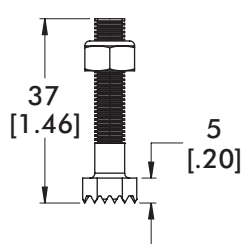
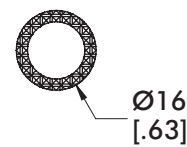
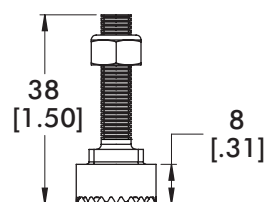
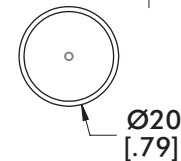
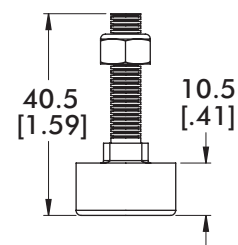
Description

One-Step Quick Tip Adjustment Tool

Part Number

8ZW-1006-1

Jaw Tip Options

Point
TipPart Number
8JD-1001-1Peen
TipPart Number
8JD-1003-1Serrated
TipPart Number
8JD-1002-1Serrated
Sensor TipPart Number
8JD-1004-1Polyurethane
TipPart Number
8JD-1005-1



A DOVER COMPANY

GLOBAL LOCATIONS

NORTH AMERICA

DE-STA-CO Headquarters
Auburn Hills, Michigan
Tel: 1.248.836.6700
Toll Free: 1.888.DESTACO
Marketing: marketing@destaco.com
Customer Service: customerservice@destaco.com

Charlevoix, Michigan
Tel: 1.888.DESTACO
Customer Service: customerservice@destaco.com

Wheeling, Illinois
Tel: 1.800.645.5207
Customer Service: camco@destaco.com

Red Wing, Minnesota (Central Research Laboratories)
Tel: 651.385.2142
Customer Service: sales@centres.com

SOUTH AMERICA

Brazil
Tel: 0800-124070
Customer Service: samerica@destaco.com

ASIA

Thailand
Tel: +66-2-326-0812
Customer Service: info@destaco.com

China
Tel: +86-21-2411-2600
Customer Service: china@destaco.com

India
Tel: +91-80-41123421-426
Customer Service: india@destaco.com

EUROPE

Germany
Tel: +49-6171-705-0
Customer Service: europe@destaco.com

France
Tel: +33-1-3996-5000
Customer Service: france@destaco.com

UK
Tel: +44-1902-797980
Customer Service: uk@destaco.com

Spain
Tel: +34-936361680
Customer Service: spain@destaco.com

Netherlands
Tel: +31-297285332
Customer Service: benelux@destaco.com



A DOVER COMPANY

1025 Doris Road
Auburn Hills, MI 48326 USA
Tel 1.888.DESTACO
Fax 1.248.836.6901
Email customerservice@destaco.com
destaco.com

