

Lafuco

COMPANY PROFILE



Lafuco

About us

Experts in Custom Glass Solutions for Modern Commercial Buildings

At Lafuco, we have over 25 years of experience delivering tailored glass solutions for construction and commercial projects – and with an annual turnover of 70 million DKK, we are a solid and trusted partner.

We operate not only in Denmark but also in Greenland, the Faroe Islands, and Iceland, where we take practical factors such as climate and logistics into account. We supply both glass railings and interior glass walls with matching doors – always adapted to the unique requirements of each project – and we provide professional support during installation to ensure optimal results.

If you need solutions that meet specific fire or acoustic requirements, we customize the design to ensure functionality and an aesthetically pleasing finish.

No project is too big – and no distance too far.

Lafuco – Exclusive Glass Solutions Since 1997

Since 1997, Lafuco has been a trusted partner for developers, architects, and contractors, specializing in unique interior glass partitions and doors – all tested according to current EU standards.

We turn the impossible into reality by creating tailor-made solutions for the commercial sector. Our portfolio includes projects such as Copenhagen ZOO, the Education Center in Tórshavn, Copenhagen Airport, the University of Southern Denmark, and airports in Greenland.

In short: We are one of Denmark's leading companies in glass solutions for institutions, municipalities, and businesses.



Glisir Education Center, Tórshavn

Glisir is beautifully integrated into the landscape with a multi-level atrium. All classrooms facing the corridors feature curved glass walls, with colored film distinguishing each floor.

We custom-designed aluminum profiles, door frames, and fittings to meet safety requirements and the ar-

chitect's vision. The glass walls include CSA-approved glass doors, and as a safety feature, we installed clamped glass railings along the atrium's concrete edges.



Lafuco's share of the project amounted to 33 million DKK.



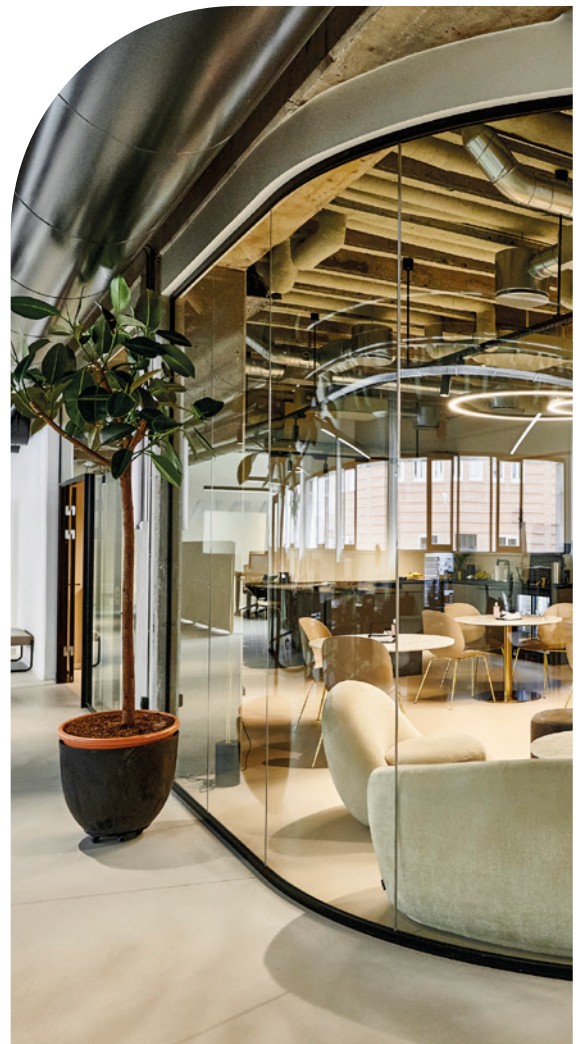
Curved Glass Walls for Modern Commercial Spaces

Curved glass walls are used in offices, institutions, and other commercial projects where space division is needed without compromising daylight or visual openness. Their flowing lines create a seamless transition between zones and enhance the building's architectural geometry.

At Lafuco, we provide early guidance on radius, glass type, and construction. We work with full-glass curved structures and ensure both visual integration and technical specifications meet all requirements for commercial buildings and installation. Even the door frames are rolled to match the glass radius, creating a harmonious and complete design.



We cannot boast of standard glass walls, because all our glass walls are designed for the individual project



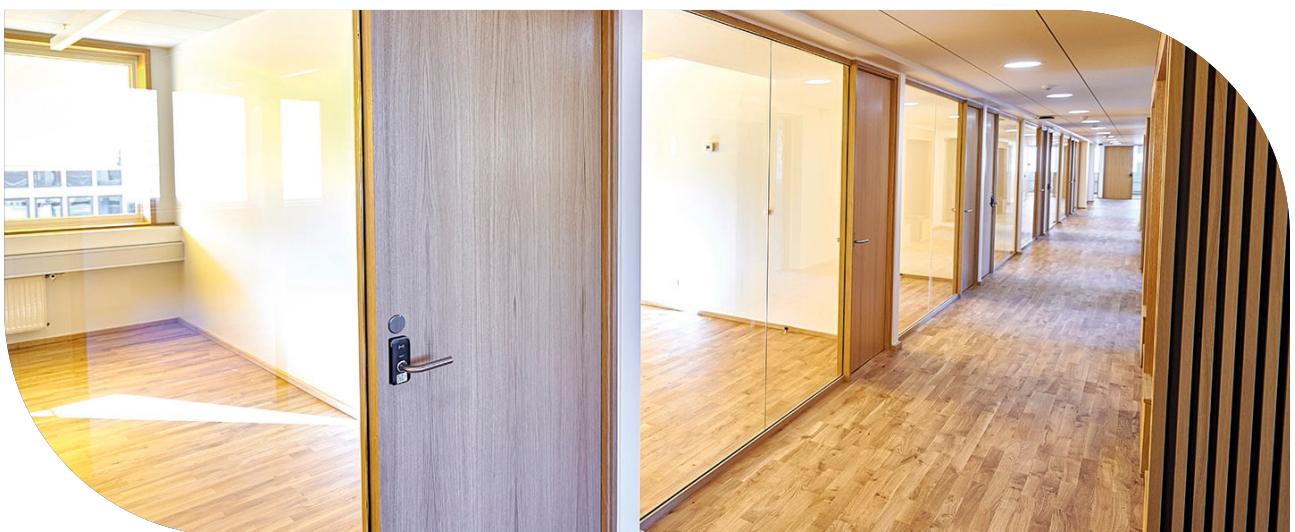
Shell House – Glass and Wood in Perfect Harmony

Shell House has undergone an impressive transformation with over 700 m² of interior glass walls adorned with oak slats, adding warmth and character to the modern multi-level environment. The project also includes solid wood doors in elegant oak veneer, meeting fire safety requirements from unclassified up to EI30, as well as full-glass doors with oak frames,

creating transparency and cohesion throughout the space.

The design combines aesthetics and functionality – glass brings light and openness, while wood adds a natural and exclusive finish that supports a contemporary workspace.

Here, wood has added warmth and exclusivity – the perfect detail for a sleek and professional work environment.



Fire protection

For over 25 years, we have delivered fire-resistant solutions to the Danish commercial sector, combining safety with sleek design. Our fire-rated glass walls are engineered to prevent and delay the spread of flames,

radiant heat, and Hazardous smoke, protecting your building and ensure a safe environment in critical situations.



SDU Kolding

Henning Larsen Architects has designed a striking triangular building on the former warehouse area at Kolding Harbor, now home to the University of Southern Denmark. Lafuco supplied the glass walls – including an amoeba-shaped meeting room.

The building features a large atrium on the ground floor, bringing daylight to all levels through an impressive glass roof. On the ground floor, where the canteen and library are located, we installed 7.5-meter-high glass walls as partitions to the entrance foyer – the tallest glass walls Lafuco has delivered to date.



These glass walls are the tallest that Lafuco has built to date

Airports in Greenland

Lafuco has delivered glass solutions for three new airports in Greenland: Nuuk, Ilulissat, and Qaqortoq. Our solutions combine high safety standards with a modern and inviting design.

We have installed fire-rated glass walls (EI30) in aluminum and steel, as well as P6B security glass for maximum protection. In addition, we have supplied glass-framed doors, automatic sliding doors – both

with and without fire classification – and passport control booths to ensure efficient and secure passenger handling.

Three projects that meet international standards and create a safe and open travel experience.



Lafuco's share of the project amounts to 21 million DKK.



Panda habitat at Copenhagen Zoo

For this spectacular BIG-designed project, we delivered curved and angled glass panels that follow the building's sweeping concrete edges and the varying terrain. The railings are made of 21 mm tempered and laminated glass, clamped and secured with steel plates precisely shaped to match the glass contours, creating a clean and elegant finish.

We also designed a custom top profile with two functions: concealing the LED light strip and serving as a handrail—while remaining discreet so as not to overshadow the glass. The result is a solution that combines technical precision with understated aesthetics.



SDU SUND, Odense

The new SUND building, connecting the New OUH with the University of Southern Denmark, features a modern design with 1,500 meters of glass railings on landings and staircases. The project included the development of a custom handrail to match the architect's vision.

In addition, we supplied and installed 1,000 doors and 3,000 m² of interior glass walls, ensuring both functionality, safety, and aesthetic appeal.



Lafuco's share of the project amounted to 22 million DKK.



Over 25 years of experience – your guarantee of quality.

Our specialists deliver solutions where expertise and precision make all the difference.



Glass Walls with Superior Sound Insulation

Lafuco Twinn Wall is engineered to meet the growing demand for acoustic comfort in modern office environments. Featuring glass panels with sound insulation of up to 50 dB, this solution creates a calm and focused workspace—even in noisy settings such as open-plan offices and meeting rooms.

With Lafuco Twinn Wall, you get a glass wall that combines advanced noise reduction with versatility, including framed glass doors with insulated glazing for a sleek and functional design.



Projects in progress

1. Copenhagen Airport, New Security Check

Includes 4.5 meter high glass hanging in the roof construction



Lafuco's contractual share of the project amounts to 8 million DKK.

2. New North Zealand Hospital

All types of glass walls are installed here, including X-ray glass, fire- and sound-insulating glass, as well as elements in wood and aluminum.



Lafuco's contractual share of the project amounts to 22 million DKK.



Henrik Jensen, Curriculum Vitae

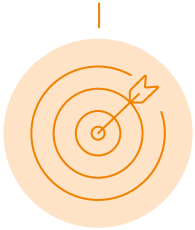
Henrik Jensen is Project Manager and leads production and project managers at Lafuco.

Since 2003, he has worked on developing new products and has extensive experience in managing com-

plex projects that require close collaboration. Henrik is an expert at translating the client's requirements into concrete building components and integrating them seamlessly with the contractors' work.

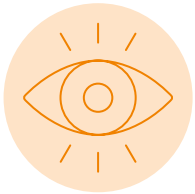


Lafuco's Mission, Vision and Values



Mission:

Lafuco's mission is to enhance the interior design of institutions and commercial spaces with unique glass walls, tailored to each individual project, while continuously challenging the way glass solutions are conceived.



Vision:

Lafuco's vision is twofold: First, we aim to be recognized as one of Denmark's leading and most innovative suppliers of glass walls. We will achieve this by creating glass solutions that seem impossible at first glance and by continuing to embrace our customers' design ideas with an open mind.

Second, we strive to be a workplace in Denmark with a high level of well-being. We will accomplish this by fostering pride in the work we do and maintaining a strong focus on social interaction and professional development—both individually and as a team.



Values:

Our core values are divided into three main principles:

Loyalty, Pride and Unity

A loyal team with strong unity and shared pride in the work we deliver is the foundation of a healthy company that maintains a high professional standard and consistently provides quality solutions to our customers and partners.

Quality and Professionalism

Glass solutions must last for many years, which is why our solutions are always of the highest quality—from materials to installation. We approach every task with professionalism and use our solid practical knowledge to deliver perfection.

Development Through Challenges

We grow through the challenges we face. That's why we are never afraid to take on projects that push us to think outside the box and leverage our high flexibility in creating glass solutions.



Lafuco



+45 43 53 40 40



mail@lafuco.dk