

Product Range

Overview of Our Product Versatility

www.reich-kupplungen.com

SIMPLY **POWERFUL.**



WE ARE REICH

Competence in power transmission applications since 1946

Founded by my grandfather in 1946, our family-run company has been continually developing ever since to meet the demands of the market- from a spare parts manufacturer for the mining industry to an internationally renowned specialist in power transmission engineering.

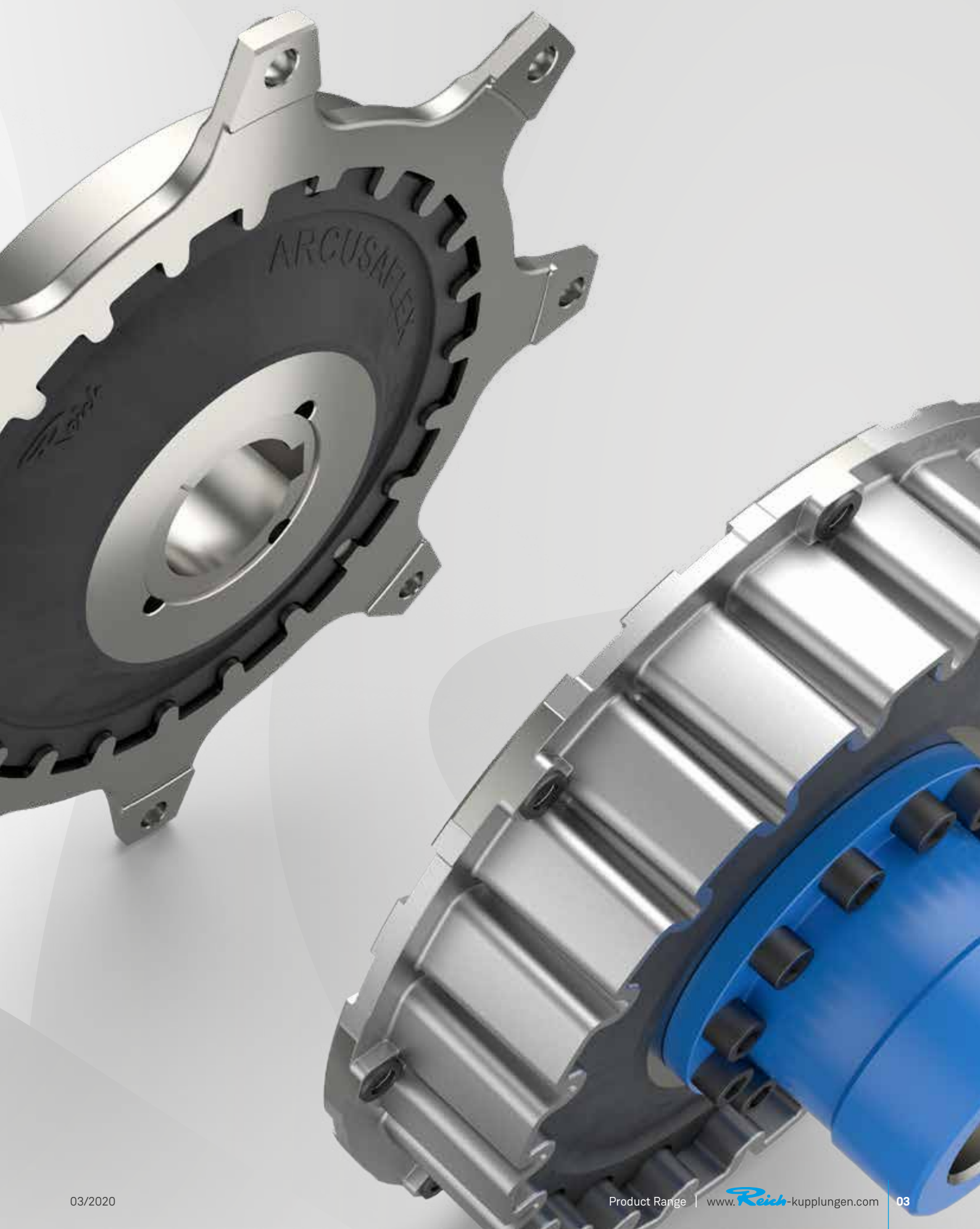
Today, we develop and produce torsionally flexible couplings with a high level of vertical integration under the REICH brand. These products are predominantly used for combustion engines in stationary and mobile applications.

Our highly qualified and reliable employees ensure continual progress. In combination with the latest manufacturing technologies, we produce sophisticated coupling system solutions at our main plant in Bochum. Our own worldwide sales network has been significantly expanded in the recent years and serves as a basis for the global and sustainable success of the REICH brand.

Since I joined the company's management I have dedicated my efforts to preserving these values and positioning our company for a secure and successful future into the third generation.

Yours, Christian Reich







We not only develop couplings, but solutions!

SUCCESS THROUGH PARTNERSHIP

Customers and Employees

Our employees are the real key to success. Their motivation and creativity set everything in motion. All over the world, our strong REICH team ensures innovations that drive our customers and their products.

The guiding principle of Designed to Customer is the recipe for success behind REICH. In addition to the catalogue products, we supply our customers with couplings developed to their specific requirements. The designs are mainly based on modular components to provide effective and efficient customer solutions. The special nature of our close cooperation with our partners ranges from; consulting, development, design, manufacture and integration to existing environments, to customer-specific production, logistics concepts and after-sales service - worldwide. This customer-oriented concept applies to both standard products and production in small batch sizes.

The company policy at REICH embraces, first and foremost, principles such as customer satisfaction, flexibility, quality, prompt delivery and adaptability to the requirements of our customers.

REICH provides you with not only a coupling, but a solution:
Designed to Customer – SIMPLY **POWERFUL**.

D2C
Designed to Customer

APPLICATIONS

for Industry Specific Requirements



POWER GENERATION

- combined heat and power unit aggregates
- stationary power generators
- decentralised power systems
- biogas and natural gas applications



MOBILE APPLICATIONS

- generators
- gearboxes
- pump drive/splitter gearbox
- mobile compressors



TEST BENCHES

- combustion engines
- racing engine test benches
- electric motors
- gearboxes
- roller dynamometer test benches



PUMPS & COMPRESSORS

- stationary/mobile screw compressors
- roots/vacuum pumps
- reciprocating compressors for diesel engines
- centrifugal pumps for diesel engines



INDUSTRY

- material handling and belt conveyor drives
- woodworking machinery
- steel works equipment
- gearbox applications
- crane engineering etc.



MARINE APPLICATIONS

- bow/stern and transom rudder
- propeller drives
- on-board power supply generator sets
- generators
- pumps and compressors
- winches

PRODUCTS



ARCUSAFLEX®

Nominal torques from 210 Nm to 72 000 Nm

- Very high torsional elasticity with a linear torsional deflection characteristic
- High torsional vibration and shock load damping capability
- Backlash-free torque transmission
- Ease of assembly thanks to the plug-in type design with ample axial float
- Compensation of major misalignments
- Torque limiting, protecting the drive from overload
- ATEX



ARCUSAFLEX-VSK

Nominal torques from 390 Nm to 20 000 Nm

- Linear torsional deflection characteristic
- Elements available in different torsional stiffnesses
- Enhanced damping capacity through frictional damping
- Maintenance-free coupling bearings
- Radial bearing close to the cardan joint
- A variety of designs for different drive shaft configurations
- Many types with SAE connection dimensions or as specified
- Compact construction, the highly flexible element being protected by the housing



TOK COUPLING SYSTEM

Nominal torque from approx. 100 Nm at 10 000 min⁻¹ to 70 000 Nm at 1800 min⁻¹

- Elements available in different torsional stiffnesses
- Suited for highest speeds
- Adaptation to DIN or SAE flanges or according to specification
- Self-centering, backlash-free and maintenance-free
- Optional reduction of the torsional stiffness through the use of 2 elements
- Compensation of axial, radial and angular displacements
- Light-weight construction through the use of high-strength aluminium
- Variable mounting lengths through telescopic intermediate shafts
- For use up to T_{KN}, depending on the application



TOK FOR FLEXIBLY MOUNTED ENGINES

Nominal torques from 1 500 Nm to 86 000 Nm

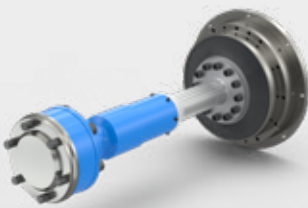
- Direct connection to SAE J 620, adaptation to other flywheels on request
- Compensation of axial, radial and angular displacements
- Variable mounting lengths
- Backlash-free and maintenance-free
- Increased torque transmission capacity by the use of 2 elements
- Suited for highest speeds
- Optionally light weights by the use of high-strength aluminium



TOK OPTIMISED FOR PLUG-IN CONNECTION

Nominal torque to 720 Nm

- Direct connection to SAE J 620, adaptation to other flywheels on request
- Compensation of axial, radial and angular displacements
- Backlash-free and maintenance-free
- Can also be used for bell-house type
- Freely pluggable splined shaft for ease of assembly
- Various elastomers for adaptation to resonance condition and temperature (-40 °C to +120 °C)
- Linear torsional deflection characteristic



TOK DOCKING SYSTEM

Nominal torques from 100 Nm to 70 000 Nm

- On the dyno side, no complex mechanics and no manual intervention is necessary
A correctly positioned, fixed support is sufficient
- Setup with complex assembly procedures takes place outside the test cell
- Rotational speeds of up to 6 000 min⁻¹ are possible
- All the toothed shaft components of a system engage in any turning position while maintaining good balance
- Centering attachments are available as spare parts and easily changeable
- The docking system can be extended to multiple test cells



PRODUCTS

RCT

Nominal torques from 300 Nm to 5 000 Nm

- Sub critical operation through high torsional stiffness
- Vibration and torque shock damping through flexible rubber coating
- High torque transmission capacity, fail-safe
- Ambient temperatures from -25 °C to +100 °C
- Compact, robust, maintenance-free
- Ease of assembly thanks to the plug-in axial design
- Backlash-free shaft-hub connection
- Compensation of axial, radial and angular displacements
- Multiple spline options for the connection to the pump shaft
- Bellhousing flanges for almost any mounting situation



MULTI MONT SELLA

Nominal torques from 63 Nm to 1 000 000 Nm

- Compensate axial-, radial- and angular displacements
- Damping shocks and vibrations
- Are fail-safe and withstand high overloads
- Well suited as plug-in type couplings ensuring ease of assembly and alignment
- Allow prompt and easy radial change of the flexible elements by sliding back the retaining cap
- Maintenance-free
- Customisable for almost every type of mounting situation
- Easy and simple assembly of the shaft connections thanks to taper bushes
- ATEX



MULTI MONT SELLA - HighSpeed

Nominal torques from 630 Nm to 3 000 Nm

- High speeds
- Maintenance-free
- Shock and vibration damping
- Compensation of axial, radial and angular displacements
- Ease of assembly and alignment
- Simple radial element replacement by sliding back the retaining cap
- Fail-safe operation and high overload capability
- High-strength aluminium
- Low weight
- Adaptable to almost any mounting situation





ELBO

Nominal torques from 200 000 Nm to 1 300 000 Nm

- Modular type
- Torque transmission up to 1 300 kNm
- The coupling is therefore designed as a shaft-hub connection with a key connection as standard
Alternative types of connection available on request
- Compensation of axial, radial and angular displacements
- Coupling elements available in different stiffnesses
- Ease of assembly thanks to the plug-in axial design
- Low axial restoring forces due to the slide bearing
- Suited for ambient temperatures from -40 °C to +80 °C
- Typical applications: Cableways, mills, crushers, large scale compressors



FLEXDUR

Nominal torques from 18 Nm to 130 000 Nm

- Torsionally rigid and backlash-free torque transmission
- Compensation of axial, radial and angular shaft displacements
- Small restoring forces at shaft displacement
- Neither maintenance, nor lubrication required
- For use at ambient temperatures from -25 °C to +250 °C
- Compact design, also suitable for high speeds
- Almost unlimited lifetime and wear-free at proper shaft alignment
- ATEX



FLEXDUR - HighSpeed

Nominal torques from 320 Nm to 12 500 Nm

- Torsionally rigid and backlash-free torque transmission
- Can be directly adapted to torque sensors
- Suitable for very high speeds
- Compensation of axial, radial and angular shaft displacements
- Small restoring forces at shaft displacement
- Low mass inertia due to high power density
- For use at ambient temperatures from -35 °C to +110 °C
- Neither maintenance, nor lubrication required
- Almost unlimited lifetime and wear-free at proper shaft alignment



PRODUCTS



MULTI MONT OCTA

Nominal torques from 340 Nm to 20 000 Nm

- Efficient torsional vibration and peak torque dampening and absorbing capability
- Ease of assembly thanks to the plug-in type design
- Compensation of axial, radial and angular displacements
- Coupling hub of spheroidal cast iron as a standard
- Fail safe design and high load carrying capability, yet with overload breakage protection due to an existing rated break point
- Simple, compact coupling design



MULTI CROSS FORTE

Nominal torques from 160 Nm to 54 000 Nm

- Very high torsional flexibility with a progressive torsional characteristic line
- High compensation capability of axial, radial and angular displacement
- Backlash-free torque transmission even in case of alternating directions of rotation
- High torsional vibration and shock load absorbing capability
- Good heat dissipation which may be generated by the damping effect of the coupling
- Easy alignment of the coupling
- Positive fit between transmission element and hub flange to prevent relative movement
- Cost-saving spare parts inventory by use of the same element size within one series type



MULTI CROSS RILLO

Nominal torques from 24 Nm to 14 675 Nm

- High torsional flexibility with progressive torsional deflection characteristic
- High compensating capability for axial, radial and angular displacements
- Easy and time saving mounting of the coupling hubs thanks to the use of taper bushes
- Radial change of the rubber element without axial movement of the coupled machines
- Backlash-free torque transmission even in case of alternating directions of rotation
- High torsional vibration and shock load damping capability
- Body soundproofing
- Wear-resistant and maintenance-free



REIBO

Nominal torques from 350 Nm to 350 000 Nm

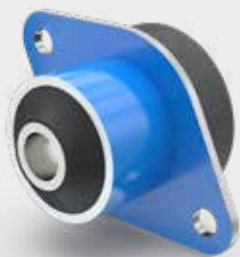
- Compensation of axial, radial and angular displacements
- Damping shocks and vibrations
- Fail safe operation
- Ease of assembly and ease of alignment
- Plug-in mounting facility
- No maintenance required
- Available in different types or as special designs



MULTI MONT ASTRA

Nominal torques from 10 Nm to 3 600 Nm

- Compensation of axial, radial and angular displacements
- Shock and vibration damping
- Fail safe and withstand high overloads
- Ease of assembly and alignment
- Maintenance-free



FURTHER PRODUCTS

- Rubber components
- Power take off clutches
- Barrel couplings
- Tooth couplings
- Combination couplings
- Electromagnetic couplings
- Safety couplings
- Friction couplings
- Damper



ALWAYS LOOKING AHEAD

Research and Development

High-tech, know-how, and technical curiosity – this describes the most important features of our research and development (R&D) department. Using the most advanced calculation and simulation software and highly dynamic coupling test benches, we create products which provide our customers with the maximum benefit.

Also worth mentioning is the fact that REICH has decades of experience in the development of rubber components. Rubber is mouldable, protects, dampens, insulates, absorbs, decouples, seals, isolates and is flexible. Its unique properties become particularly apparent when employed in flexible couplings – for example as a transmission element that reliably decouples torsional vibrations and compensates for misalignments.

The optimal, application-tailored rubber compound is selected by our R&D department using their comprehensive expertise



and decades of experience with this material. All the rubber qualities used are developed by REICH and are defined by unique formulations.

Thanks to our modular and perfectly coordinated catalogue range, our customers can select the optimum coupling solution for their power transmission task. Comprehensive customer support is the great strength of our employees in Sales, Technology and Service. By working closely with our customers, we can quickly identify which solution best meets their requirements: a coupling in a standard design or a specially tailored solution - also made to order - according to the “Designed to Customer” principle.

We demand high standards of our products in terms of quality, safety, and service life and meet them through well-engineered designs and production methods. As a result, REICH rightly

enjoys an excellent reputation in particularly demanding areas of application, such as:

- Combined heat/power and biogas plants
- Construction machinery and commercial vehicles
- Agriculture and forest engineering
- Conveying engineering and plant construction
- Railway engineering
- Shipbuilding and marine engineering



MANUFACTURE, QUALITY, ENVIRONMENT AND SAFETY

All in Unison

REICH manufactures, among other things, an extensive range of torsionally flexible couplings. A focus and key quality factor is the in-house development and manufacture of the elastomers deployed, using the most modern production processes.

Our own state of the art test benches and equipment guarantee high-quality and durable products for power transmission components with the REICH brand.

The ISO 9001 certified quality management system has production-related testing systems that guarantee compliance with customer requirements. The associated documentation is prepared in accordance with certified and customer audited systems. We also hold approvals from recognised classification societies for shipbuilding and marine applications.

Quality and environmental protection play a vital role in all areas of the company – from development, purchasing and production processes to logistics. Our ISO 14001 certificate provides evidence that REICH produces in an environmentally sound manner, in compliance with an internationally recognised environmental management system.

INTERNATIONAL

Our Global Network

In response to the expectations of our export-oriented customers, REICH provides all of its customers abroad with the same level of service as in Germany, through its global presence. Our own subsidiaries and sales partners across the globe will provide reliable service, on site – around the clock.

With our worldwide network, we make sure that our products and spare parts are available anytime and anywhere. Whether by land, sea or air – optimal shipping of REICH products is ensured. International logistics partners with modern freight transport systems see to it that your goods arrive safely and on time.

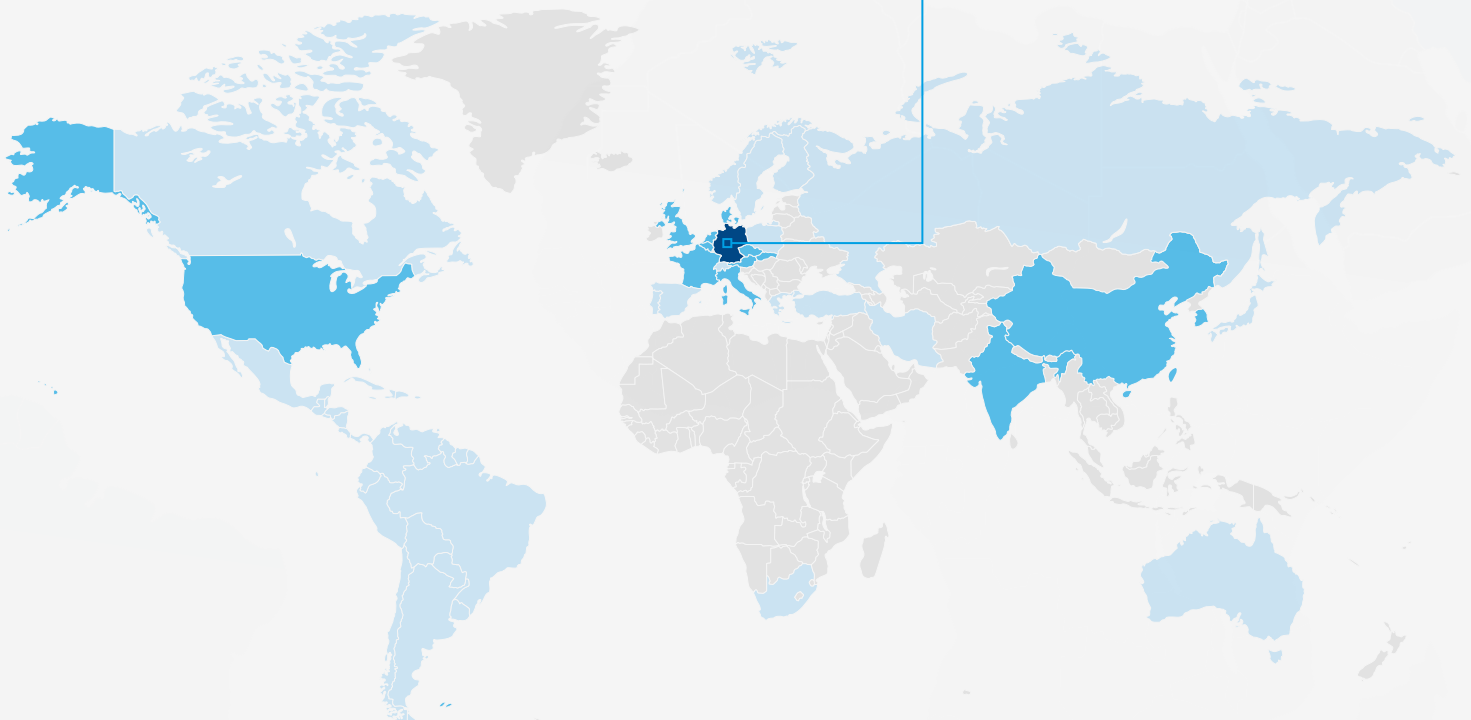
HEADQUARTER:

Dipl.-Ing. Herwarth Reich GmbH
Vierhausstrasse 53 · 44807 Bochum

☎ +49 234 95916-0

✉ mail@reich-kupplungen.com

🌐 www.reich-kupplungen.com









- Headquarter Bochum
- Subsidiaries
- Sales partners






SIMPLY **POWERFUL.**

Industrial solutions:

-  Power generation
-  Mobile applications
-  Test benches
-  Pumps & compressors
-  Industry
-  Ship & port engineering

Headquarter:

Dipl.-Ing. Herwarth Reich GmbH
Vierhausstrasse 53 · 44807 Bochum

-  +49 234 95916-0
-  mail@reich-kupplungen.com
-  www.reich-kupplungen.com

Copyright ISO 16016 to be observed:

The reproduction, distribution and utilisation of this document as well as the communication of its contents to others without explicit authorisation is prohibited. Offenders will be held liable for the payment of damages. All rights reserved in the event of the grant of a patent, utility model or design. © REICH - Dipl.-Ing. Herwarth Reich GmbH

March 2020 edition

The present PRODUCT RANGE catalogue edition renders parts of the previous PRODUCT RANGE catalogues obsolete. All dimensions in millimetres. We reserve the right to change dimensions and/or design without prior notice. Texts and illustrations, dimensional and performance data have been compiled with the utmost care. There is no guarantee, however, that the information is accurate; in particular, there is no guarantee that products will match the illustrations in terms of technology, colour, shape and configuration or that the products will correspond to the proportions of the illustrations. We also reserve the right to make changes due to printing errors or mistakes.