

**BEKAMAK**  
sawing machines

ISO 9001  
BUREAU VERITAS  
Certification



**BMSO 420 XS** High Efficient  
Bandsaw Machine

# BMSO 420 XS

The fully automatic machine BMSO 420 XS CNC is optimized to work with carbide and bimetallic blades and can be applied in areas such as steel trade, steel production, forging mills, machine manufacturing and automotive industry.

We have added CNC SMART cutting feature with ball screw spindle driven by servo motor that reduces cutting tolerance almost to zero with its servo feeding system. XS with smart cutting feature, makes cutting the most efficient by determining optimal parameters based on type and size of material in order to match the type of blade being used.

ISO 9001  
BUREAU VERITAS  
Certification



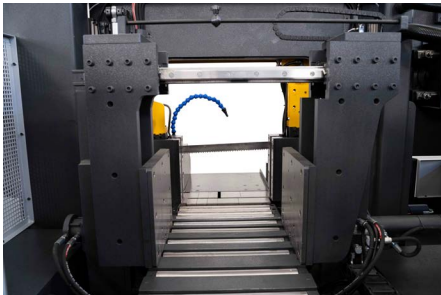
**These optimal cutting parameters reduce tool costs and leave the best surface.**



# STANDARD FEATURES

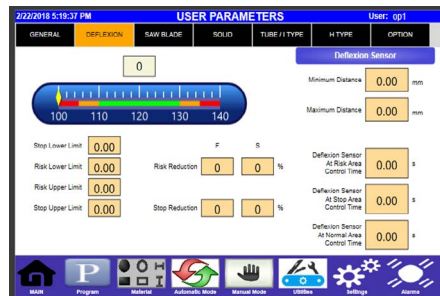
## OMRON PLC CONTROL PANEL AND SMART SOFTWARE

Thanks to this software, changes in cutting lengths can be programmed in without making adjustments on the machine while it is operating. It allows the user to save up to 50 different programs with 100 cutting steps.



## SERVO FEEDING SYSTEM WITH OMRON SERVO MOTOR

This moveable vice feeds the material with excellent precision. Individual feeding stroke is 700mm but multiple stroke is 9.999mm. Feeding tolerance is +/- 0,1mm



## DEFLECTION CONTROL

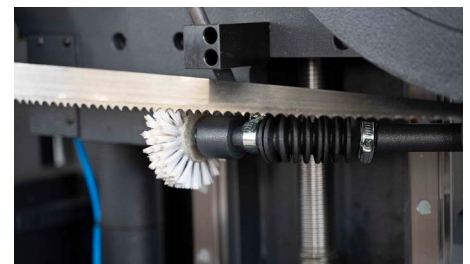
Deflection sensor is the best way to understand that the blade life is getting over. Operator can enter the desired min. and max. values of cutting tolerances then the machine firstly gives warnings in the risk area then stops the machine when it goes further of risk area. With this feature, our customers do not lose any material due to the wrong cut.



## PLANETARY GEARBOX

Planetary gearboxes are used on XS models. They work at high torques in small volumes and have high power density for high efficiency.

## CHIP CONVEYOR AND CHIP BRUSH



## AUTOMATIC HYDRAULIC BLADE TENSION

This feature comes with a hydraulic cylinder that carries out blade tensioning automatically. The cylinder tensions the blade until it reaches a prefixed value, while always maintaining correct blade tensioning. Furthermore, it adjusts and applies optimal tension during cutting process.



## BMSO 420 XS

- OMRON PLC Control Panel And Smart Software
- Servo Feeding System With OMRON Servo Motor
- Deflection Control
- Planetary Gearbox
- Chip Conveyor And Chip Brush
- Automatic Hydraulic Blade Tension

## OPTIONAL FEATURES

---

### HYDRAULIC TOP CLAMPING

Hydraulic top clamping is used for cutting bundles in order to clamp them from 4 sides. It Works in synchronization with fixed vices.



### HEXAGONAL VICES

---

Hexagonal vices are suitable for tube bundle cutting. It fixes tubes together and prevents vibration during cutting.

### 3 METERS ROLLER TABLE

---



### MICROSPRAY COOLANT

---

We suggest microspray coolant for cutting tubes and profiles Which have thin thickness.



ISO 9001  
**BUREAU VERITAS**  
 Certification



# TECHNICAL DATA

## BMSO 420 XS

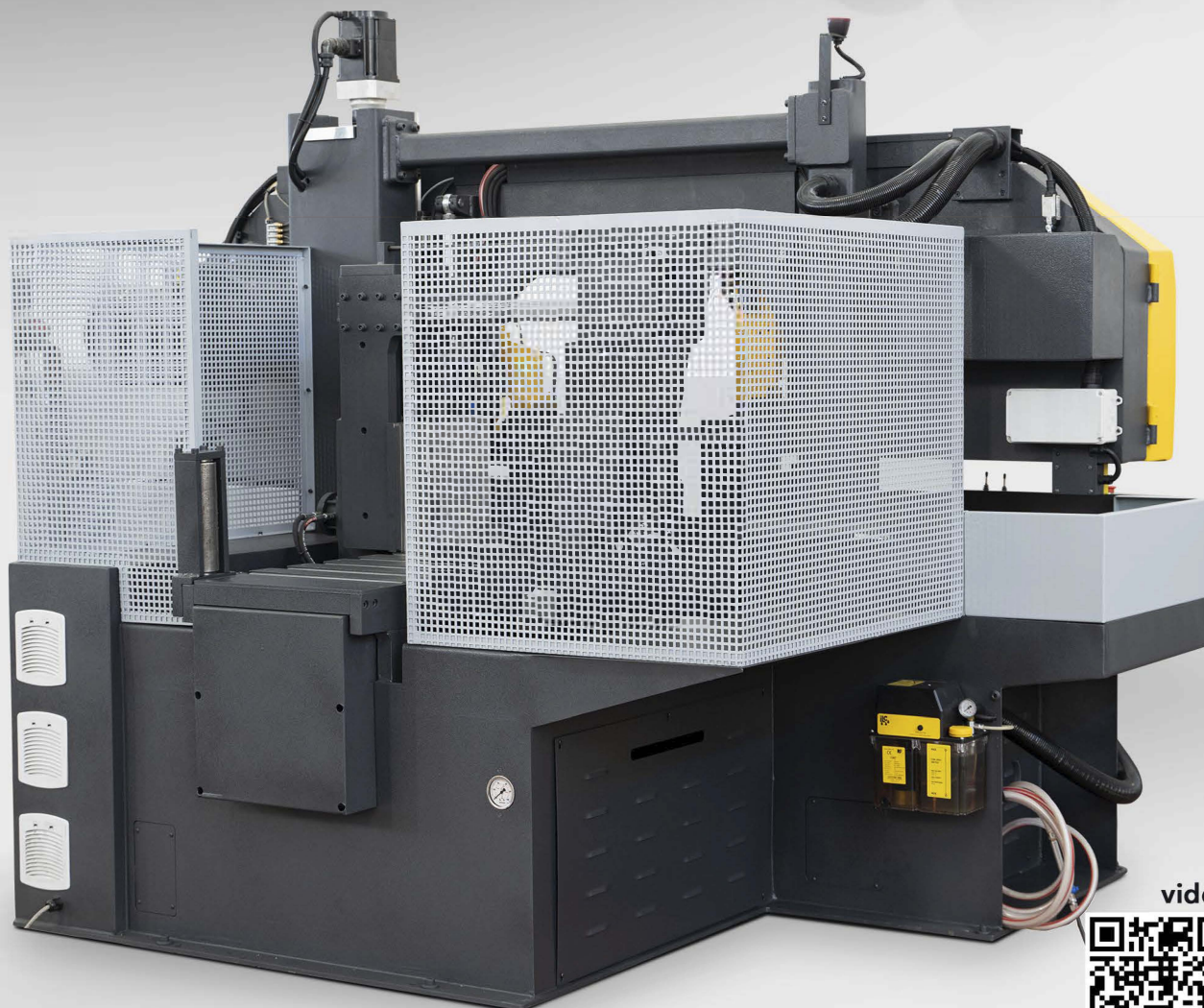
				
Cutting Capacity	0°	420	420 x 420	420
Main Motor	7,5 kW			
Hydraulic Motor	1,1 kW			
Bow Servo Motor	1 kW			
Feeding Servo Motor	1 kW			
Blade Speed	20-150 m/min			
Feeding Stroke	700 mm			
Multiple Feeding Stroke	9.999 mm			
Minimum Cutting Length	10 mm			
Minimum Scrap in Auto Mode	105 mm			
Band Dimension	5750x41x1,3 mm			
Working Height	805 mm			
Dimensions	<b>Width 2.820 mm    Depth 1.960 mm    Height 1.930 mm    Net Weight 3.300 kg</b>			

**BEKAMAK**  
sawing machines

ISO 9001  
BUREAU VERITAS  
Certification



BM50  
420XS



video



www.bekamak.com