



CC-3000

Modular light control housing

Modular design

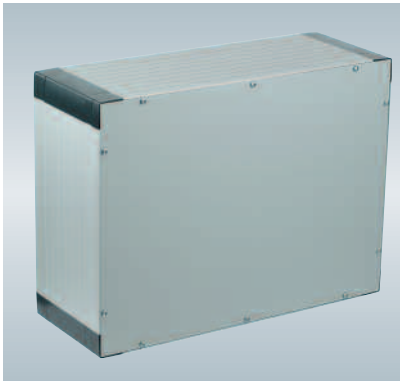


Profile depth comparison:
200mm (left) and 120mm (right).



Profile 120mm with additional
Door extension profile (55mm).

The Bernstein light control housing CC-3000 is especially suitable for mounting display components or control elements, (HMI's, IPC's etc). Its height and width are variable up to a maximum recommended size of approx. 600 x 600 mm. Various combinations of the 55, 120 and 200 mm wide aluminium profiles give the housing several depth possibilities.



Fixed back plate.



Hinged back plate with lock.

The rear panel can be securely fixed (photo left) or configured as a door (photo right). The 55 mm wide extension profile can also be hinged as a rear door (photo, top row right), producing a maximum installation depth of 246 mm when used with the 200mm profile.



Front panel internally mounted.



Front panel externally mounted.

There is a practical quick assembly system with plastic fold-up retaining elements for mounting the **internal front panel**. Modification of the front panel is not necessary to do this as the position of the retaining elements is selectable and adjustable within the housing. **External mounting:** Type 1: Bolts are screwed directly through the **outer front panel** into captive nuts, which sit in the retaining elements (positioned as required). Type 2: Threaded studs are friction welded on to the rear of the front panel, these are fastened through the retaining elements with nuts holding the front panel in place (invisibly from the outside). When the door extension profile is used, the rear panels can also be secured in the ways described above.

The 5 possible design variants:

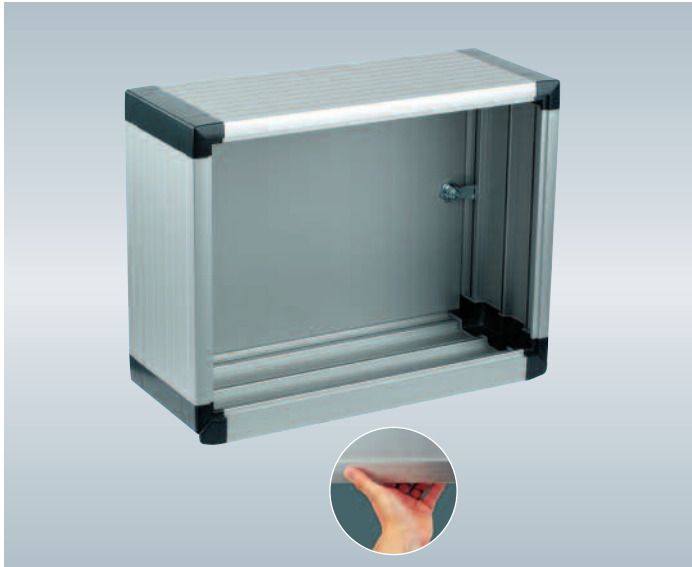
The light control housing range CC-3000 can be made in 5 different housing designs by combining various profiles.

Standard and handle-type profiles are available.

The relevant connection is achieved by using combinations of the different corner modules.



Without handles.



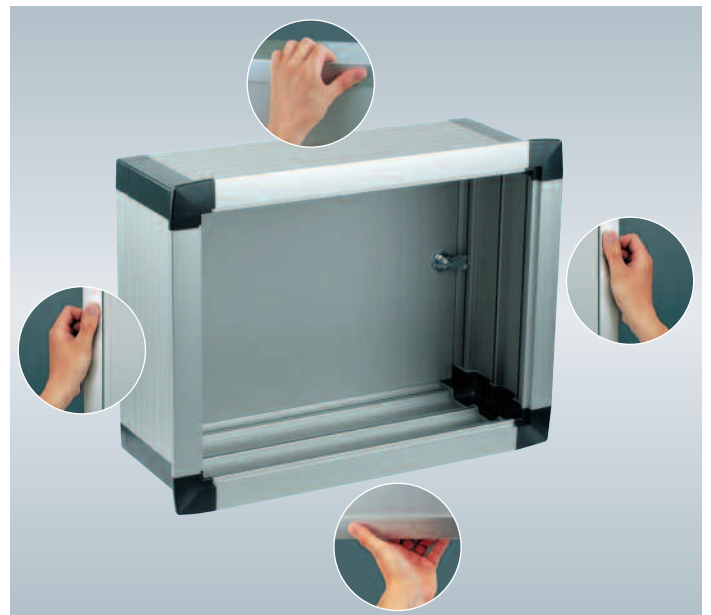
Handle at bottom only.



Handles on right and left.



Handles on left, right and bottom ("U-shape").



All round handles.

Product advantages

- Modular system:
The width and height dimensions of the housing are selectable
- 5 possible basic housing designs
- Modern industrial design with family characteristics and features
- Particularly good heat dissipation due to single-wall profiles
- Square cornered front panels (enabling direct use of e.g. standard controllers)
- Front panels can be mounted internally or externally
- Particularly easy and rapid assembly when the front panel is internally mounted
- No outer profile rubber seal to be fitted later
- Standard protection type IP65
- Rear panel fixed or can be hinged as lockable rear door
- Rear panel attachments do not restrict the internal installation space
- Internal mounting slots for simple fastening using spring nuts

Dimensions

Assembly with a single profile			
Front plate	Rear panel	Profile depth	Internal depth
A. Internally - mounted	secured or hinged	120	103
		200	183
B. Externally - mounted	secured or hinged	120	111
		200	191

Assembly with a combination of two profiles (as a door)			
Front plate	Rear panel	Profile depth	Internal depth
C. Internally - mounted	Internally - mounted	120+55	149
		200+55	229
D. Externally - mounted	Internally - mounted	120+55	157
		200+55	237
E. Internally - mounted	Externally - mounted	120+55	157
		200+55	237
F. Externally - mounted	Externally - mounted	120+55	166
		200+55	246

Customer-specific housing

The light control housings CC-3000 are supplied from the factory as standard housings or as custom-built versions. The modular concept is superbly suited for customer-specific solutions. The aluminium profiles are simply cut to length and assembled with the corner modules to create various sizes. The basic housing profile sizes can be combined with each other to achieve the required housing depth.

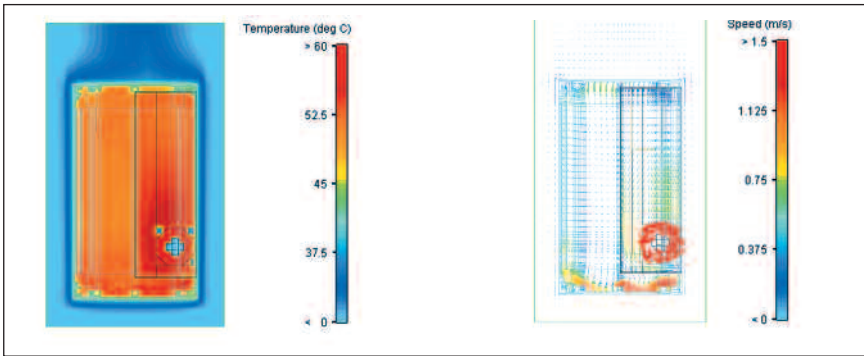
Besides the dimensions, many other housing properties are selectable in customer-specific configuration, e.g.:

- the hinged side of the door
- the housing configuration for suspension systems
- the colour of the corner modules

The front panel is also available ready for use: machined to customer's specifications, screen printed or engraved. A checklist helps to define the required housing configuration and at the same time serves as an enquiry and order form.



Heat dissipation



Temperature distribution. Cross section to the left of the internal control unit fan.

Vector depiction of the flow speeds.

The single-wall configuration gives the aluminium profiles particularly good passive heat dissipation properties while conforming to protection type IP65. In many cases there is absolutely no need to use active cooling units. Where greater demands are placed on the dissipation function, it is possible to use internal low-wear and maintenance-free fans.

Suspension system modification

Can be used with all Bernstein suspension systems, for example:

- Light suspension system CS-2000 SL
- Suspension system CS-2000 / 50
- Suspension system CS-2000 / 60
- Suspension system CS-2000 / 80
- Rotary inclined coupling of all systems



Fittings in the housing



All round attachment slots simplify installation.

The aluminium extruded profile contains internal all round slots. Components can be secured using the simple spring nuts (supplied) without any mechanical machining of the housing. This also provides a simple cable routing possibility in the vicinity of the suspension system connection.

Materials

Aluminium extruded profile _____Al Mg Si 05
 Aluminium diecast corners _____Al Si 12
 Seals between the profile and corner module _ plastic
 Seal between the front and rear panels ____CR
 Hinge, rear panel joint _____Al Mg Si 05
 Front panel, rear panel _____Al Mg

Colours

Profiles _____anodised, natural
 Front panels, rear panels _____anodised, natural
 Corner modules _____RAL 7016

Simply copy, fill out and fax:

Yes, I would like to find out more about modular control housings.

- Send me a checklist for configuring my control housing CC-3000.
- Send me the main catalogue with the complete product range (e.g. suspension systems and accessories).
- Call me.
- I would like a sales representative to visit me.

Notes

Name

Function

Company

Address

Town

County

Postal Code

Phone

Fax

E-Mail

www.bernstein-ag.com

Bernstein AG

Tieloser Weg 6
D-32457 Porta Westfalica
Tel. +49 571 793-0
Fax +49 571 793-555
info@bernstein-ag.de
www.bernstein-ag.de

Bernstein A/S

Sindalsvej 30
DK-8240 Risskov
Tel. +45 7020 0522
Fax +45 7020 0177
bernstein@bernstein.dk
www.bernstein.dk

Bernstein S.r.l. Italia

I-24040 Levate (BG)
Via del Pero 12a/b
Tel. +39 035 4549037
Fax +39 035 4549647
sales@bernstein.it
www.bernstein.it

Bernstein GmbH Österreich

A-2544 Leobersdorf
Kurze Gasse 3
Tel. +43 2256 62070-0
Fax +43 2256 62618
office@bernstein.at
www.bernstein.at

Bernstein Ltd.

Unit One, Tintagel Way
Westgate Park
Westgate, Aldridge
West Midlands, WS9 8EX
Tel. +44 1922 744999
Fax +44 1922 457555
sales@bernstein-ltd.co.uk

Bernstein Sarl

Tel. +33 1 64 66 32 50
Fax +33 1 64 66 10 02
info@bernstein-ag.com

Bernstein BV

NL-Doetinchem
Tel. +31 314 366088
Fax +31 314 361256
info@bernstein.nl
www.bernstein.nl