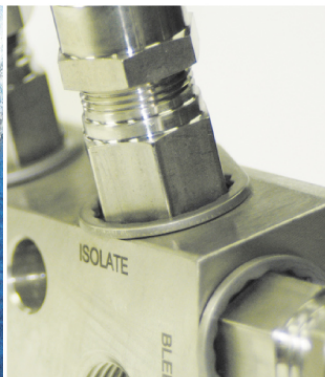
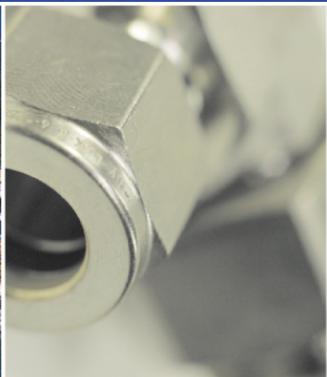


Simple Look

Product line





Hy-Lok Tube Fittings



APPLICATIONS

Instrumentation, High pressure and temperature, Cryogenic service

FEATURES

Compression type double ferrule design
Stainless Steel, Brass, Alloy 400(Monel), Duplex
Complete interchangeability
Gaugeability Vibration resistance
Excellent make and re-make life

SPECIFICATIONS

- Maximum Operating Pressure : 9000 psig (630 barg) @ 100°F (38°C)
- Operating Temperature Range : -321°F (-196°C) to 1200°F (649°C)

Refer to H-200TF



HP Series High Pressure Fittings

APPLICATIONS

Water jet cutting and cleaning, Oil and Gas production

FEATURES

Coned & threaded connection design
Stainless Steel
Repeated assembly and disassembly
Increased pressure handling capability
Sour gas service available

SPECIFICATIONS

- Maximum Operating Pressure : 60000 psig (4130 barg) @ 100°F (38°C)
- Operating Temperature Range : -325°F(-198°C) to 1200°F (648°C)

Refer to H-100HP

Instrument Thread & Weld Fittings



APPLICATIONS

General service, Instrumentation

Weld

Corrosive fluids, Temperature cycling, Vibration

FEATURES

ASME B1.20.1(NPT), Tube socket weld
Stainless steel, Brass, Carbon steel
According to ASME B31.1 & 31.3

SPECIFICATIONS

- Maximum Operating Pressure : 10000psig (680barg) @ 100 °F (38 °C)
- Operating Temperature Range : -325 °F (-198 °C) to 1200 °F (648 °C)

Refer to H-300PF & H-500WF



37° Flared Tube Fittings (SAE J514)

APPLICATIONS

Hydraulic, Pneumatic

FEATURES

37° angle and seats design
Stainless Steel, Brass, Steel
According to SAE J514/ISO 8434-2
Useable with either metric or inch tubes or hoses

SPECIFICATIONS

- Maximum Operating Pressure : 8700 psig (600 barg) @ 100°F (38°C)
- Operating Temperature Range : to 800°F (427°C)

Refer to H-240FF

ZCO O-ring Face Seal Fittings



APPLICATIONS

High pressure hydraulic system

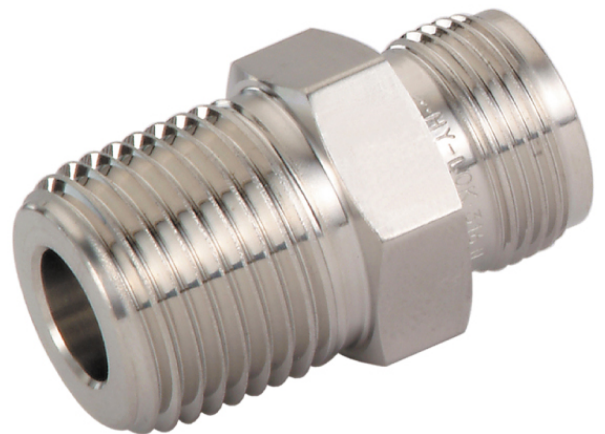
FEATURES

O-Ring face to face design
Stainless Steel, Brass
According to SAE J1453/ISO 8434-3
Zero clearance provides easy maintenance
Vibration and shock resistance

SPECIFICATIONS

- Maximum Operating Pressure : 13000 psig (900 barg) @ 100°F (38°C)
- Operating Temperature Range : to 550°F (288°C)

Refer to H-260CF



Bite Type Tube Fittings acc. To DIN 2353, SAE/JIS/KS



APPLICATIONS

Hydraulic, Pneumatic, Lubrication

FEATURES

Bite type single ferrule design
Stainless steel, Brass, Carbon Steel
According to DIN 2353, JIS B2351
Two-cutting edges and stop edge design(DIN 2353)
Useable with tubes or hoses(DIN 2353)
Metric 24 cone(JIS B2351)

SPECIFICATIONS

- Maximum Operating Pressure : 630barg (DIN 2353), 250barg (JIS B2351) @ 100 °F (38 °C)
- Operating Temperature Range : to 800 °F (427 °C)

Refer to H-230TF & H-220TF



Pipe Fittings for JIS/ANSI



APPLICATIONS

Hydraulic

FEATURES

Pipe thread, Socket & weld end
Variety of thread end - NPT, BSPT, BSPP, SAE Straight, ISO & Metric
Stainless Steel, Carbon steel
According to ASME B16.11 / BS3799 / JIS B2316 / MSS-SP95
Permanent and reliable connections

SPECIFICATIONS

- Maximum Operating Pressure : Class 2000 (S80), 3000 (S160), 6000 (XXS)
- For thread fittings : Class 3000 (S80), 6000 (S160), 9000 (XXS)
- For Socket weld fittings : Operating Temperature Range : -325°F (-198°C) to 1200°F (638°C)

Refer to H-310PF

Clean Fittings

APPLICATIONS

High purity gas line, Vacuum system

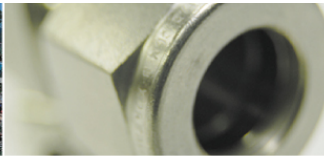
FEATURES

Auto welding design
316, 316L, VOD,
VIM/VAR Stainless Steel
Cleaning : 18MΩ.cm Hot D.I. water
Cleanness : class 10_{μm}
Helium leak rate 1x10⁻⁹ atm.cc/sec.

SPECIFICATIONS

- Maximum Operating Pressure : 9000 psig (620 barg) @ 100°F (38°C)
- Operating Temperature Range : -20°F (-28°C) to 1000°F (538°C)
- Surface Roughness : Ra ≤ 0.1_{μm}, Electro Polished

Refer to H-250CF



Air Pipe Module

APPLICATIONS

Air brake control system for electric train

FEATURES

Air supply
Frame : Stainless Steel
Reservoir : Aluminum
Air pipe : \varnothing 10.0 ~ \varnothing 28.0 O.D
Bite type tube fittings(DIN 2353)

SPECIFICATIONS

• Maximum Operating Pressure :
145 psig(10 barg) @ 100°F (38°C)



Air Manifolds

APPLICATIONS

Instrumentation,
General service

SPECIFICATIONS

• Maximum Operating Pressure :
580 psig (40 barg) @ 100°F (38°C)

FEATURES

Distribution
Stainless Steel pickled, Carbon steel galvanized
Valves : instrument Needle valve, Ball Valve
Distribution pipe : Pipe N.B. 1"~3"
Outlet ports : 2~20 ports



Instrument Panel

APPLICATIONS

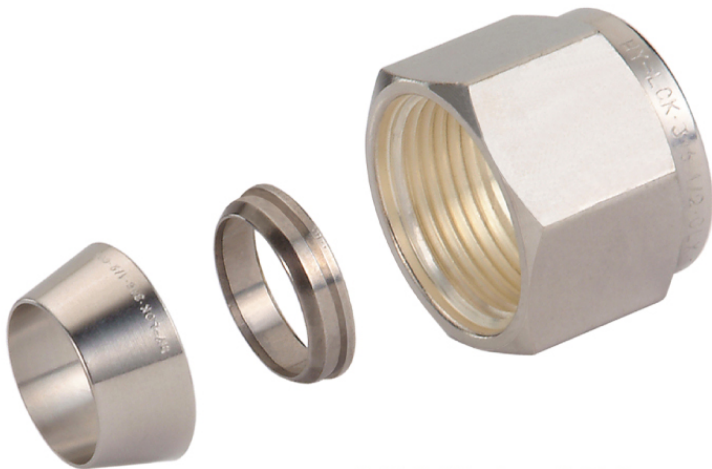
Instrumentation,
Power plants

SPECIFICATIONS

• Maximum Temperature :
-94°F (-70°C) to 176°F (80°C)

FEATURES

Enclosure with protection box
Stainless Steel pickled, Carbon steel painted
Strong weatherproof barrier(NEMA-4X)
Fire retardant GRP
Anti-static and insulated



EZY-MAT I Pre-Assembly Machine

FEATURES

Assembly of Hy-Lok tube fittings and Bite type fittings
Reliable ferrule pre-sets to tubing
Safe and reproducible assembly

SPECIFICATIONS

Assembly ability : Max O.D 1 in. (25 mm)
Hand pump : 10000 psi (700 barg), 2 speed
Weight : 6 kg



EZY-SAW ES250

FEATURES

Prevent work hardening the tube end
Assure a square cut on the tubing
Coolant Pump

SPECIFICATIONS

Cutting ability : Max O.D 80 mm
Power Supply : 220V 50/60Hz
Saw Blade : HSS - \varnothing 250 x 32 x 2t
Weight : 70 kg



EZY-GRAT EG642

FEATURES

Enable to clean the inner & outer tube quickly
Long tool life can be guaranteed
Easy change to inner and outer tool

SPECIFICATIONS

Deburring ability : Max O.D 2in. (42 mm)
Power Supply : 220V 50/60Hz
Weight : 30 kg

EZY-MAT II Pre-Assembly Machine

FEATURES

Assembly of Hy-Lok tube fittings and Bite type fittings
Flaring of 37° SAE J514 flared fittings
Easy & quick assembly

SPECIFICATIONS

Assembly ability : Max O.D 2 in. (42 mm)
Power supply : 220V 50/60Hz
Weight : 30 kg



EZY-BENDER OK070

FEATURES

High speed bending, 90° with 3 sec.
Digital regulator for bend angle
Easy change to accessories

SPECIFICATIONS

Bending ability : Max O.D 28x1.5t
Power Supply : 220V 50/60Hz
Weight : 15 kg



Hose Assembly

APPLICATIONS

SAE J516 / J517



Tubes

APPLICATIONS

TP316 / 316L
ASTM A213
ASTM A269



EZY-BENDER MB42

FEATURES

Wide bending radius
Programmable bend angle
Easy movable by wheels

SPECIFICATIONS

Bending ability : Max O.D 42x3.5t
Power Supply : 220V 50/60Hz
Weight : 23 kg



NV & SV Series Integral Bonnet Needle Valves

APPLICATIONS

- NV : Instrument isolation, General service, Test stands
- SV : Test Valves, Pilot plants

FEATURES

- In-line or angle pattern
- Stainless steel, Brass, Alloy 400(Monel)
- PTFE 2-piece chevron stem packing
- Metal to metal seat or PCTFE soft seat(bubble tight)

SPECIFICATIONS

- Maximum Operating Pressure : 6000psig (413barg) @ 100 F (38 °C)
- Operating Temperature Range : -65 F (-54 °C) to 450 F (232 °C)

Refer to H-100NV & H-101NV



SVH Series High Pressure Needle Valves

APPLICATIONS

- Instrument Isolation, Gas, Vapor or Liquid

FEATURES

- In-line pattern
- Stainless Steel, Alloy 400(Monel), Duplex
- PTFE packing provides leak tight seal and long life cycle
- Metal-to-Metal Seat or PCTFE Soft Seat (Bubble Tight)

SPECIFICATIONS

- Maximum Operating Pressure : 10000 psig (690 barg) @ 100°F (38°C)
- Operating Temperature Range : -65°F (-54°C) to 450°F (232°C)

Refer to H-103NV



GB & GH Series Union Bonnet Needle Valves

APPLICATIONS

- Handling corrosives, High temperature and pressure radioactive and hot condensate

FEATURES

- In-line or angle pattern
- Stainless steel, A105, Alloy 400(Monel)
- High temperature grafoil packing
- Metal to metal seat
- Back Seat stem for safety

SPECIFICATIONS

- Maximum Operating Pressure : 10000psig (689barg) @ 100°F (38°C)
- Operating Temperature Range : -65°F (-54°C) to 1200°F (648°C)

Refer to H-102NV & H-104NV



M Series Manifold & Gauge / Root Valves

APPLICATIONS

- Pressure & Differential Pressure Instrumentation

FEATURES

- 2-Valves, 3-Valves, 5-Valves, Manifolds designs
- Stainless Steel, Alloy 400(Monel), A105
- Available direct or remote mounting
- Isolation, calibration and vent
- Available PEEK or PCTFE seats

SPECIFICATIONS

- Maximum Operating Pressure : 6000 psig (413 barg) @ 100°F (38°C)
- Operating Temperature Range : -65°F (-54°C) to 450°F (232°C)
- PTFE Packing : -65°F (-54°C) to 450°F (232°C)
- Grafoil Packing : -65°F (-54°C) to 1200°F (648°C)

Refer to H-120MV



Bleed & Purge Valves

APPLICATIONS

- Venting or purging of liquids and gases

FEATURES

- In-line pattern
- Stainless Steel, Brass, A105
- Compact design

SPECIFICATIONS

- Maximum Operating Pressure : 6000 psig (403 barg) @ 100°F (38°C)
- Operating Temperature Range : -65°F (-54°C) to 850°F (454°C)

Refer to H-100BPV



RP Series Rising Plug Valves

APPLICATIONS

- Sour gas service
- Handling slurries or solid impurities

FEATURES

- In-line pattern, Bi-direction flow
- Stainless Steel, Brass, Alloy 400(Monel)
- High flow capacity
- Delrin, PEEK or PCTFE seats
- Replaceable O-Ring Seal and Soft Seat
- Gauge Ports available

SPECIFICATIONS

- Maximum Operating Pressure : 6000 psig (413 barg) @ 100°F (38°C)
- Operating Temperature Range : Delrin Seat : -20°F (-29°C) to 250°F (120°C)
- PEEK Seat : -20°F (-29°C) to 400°F (204°C)

Refer to H-RP100





I02 Series High Pressure Ball Valves



APPLICATIONS

High pressure
Instrument Lines
Sampling in Pilot Plant

FEATURES

2-way or 3-way designs
Stainless Steel, Brass,
Alloy 400(Monel), A105
PEEK or PCTFE seats
Easy replacement of ball seats

SPECIFICATIONS

- Maximum Operating Pressure : 6000 psig(413 barg) @ 70°F(21°C)
- Operating Temperature Range : PEEK Seat : -65°F (-54°C) to 400°F (204°C)
PCTFE Seat : -65°F (-54°C) to 350°F (180°C)

Refer to H-102BV

I05 Series High Pressure Ball Valves



APPLICATIONS

High pressure Instrument Lines
Hydraulic lines

FEATURES

2-way or 3-way designs
Stainless Steel, Brass,
Alloy 400(Monel), A105
PVDF, PEEK or PCTFE seats
Fire safety designed to API 007,
BS 6755 Part 2
Locking device available

SPECIFICATIONS

- Maximum Operating Pressure : 10000 psig (689 barg) @ 70°F(21°C)
- Operating Temperature Range : PVDF Seat : -22°F (-30°C) to 265°F (130°C)
PEEK Seat : -65°F (-54°C) to 400°F (204°C)
PCTFE Seat : -22°F (-30°C) to 350°F (180°C)

Refer to H-105BV

I10 & PS Series Ball Valves



APPLICATIONS

Pneumatic System,
Multi-purpose

FEATURES

Compact design with
one piece
Hexagon body
Stainless steel, Brass,
Alloy 400(Monel), A105
PTFE seats

SPECIFICATIONS

- Maximum Operating Pressure : 1000 psig (69 barg) @ 70°F (21°C)
- Operating Temperature Range : -65°F (-54°C) to 450°F (232°C)

Refer to H-110BV & H-100PS

I10P Series : Push Turn Ball Valves



APPLICATIONS

Chemical Plants, Refinery,
Steel Mills, Fuel Lines,
Heavy Vehicles, Semiconductor

FEATURES

Low torque for operation
Normally open type (N.O) &
Normally close type (N.C)
Locked normal position (open or close) for safety
100% factory tested before delivery

SPECIFICATIONS

- Maximum Operating Pressure : 1000 psig (70 barg) @ 100°F (38°C)
- Operating Temperature Range : -65°F (-54°C) to 450°F (233°C)

Refer to H-110BPTV

I12 Series Capsuled Ball Valves



APPLICATIONS

Instrument Air lines,
Sampling System
Refinery Pilot Plants

FEATURES

Available in Multi Ports with
3-way, 4-way, 5-way...
Stainless Steel, Brass, Alloy 400(Monel)
PTFE seats
Two-piece seat fully encapsulates the ball
Minimum dead space is easily cleaned

SPECIFICATIONS

- Maximum Operating Pressure : 3000 psig (207 barg) @ 70°F (21°C)
- Operating Temperature Range : 50°F (10°C) to 150°F (65°C)

Refer to H-112BV

I15 Series Ball Valves to DIN Standard



APPLICATIONS

Hydraulic lines

FEATURES

In-line pattern
Stainless Steel, Brass, A105
POM-MoS2 seats
Fire safety designed to API 607,
BS 6755 Part 2
Locking device available

SPECIFICATIONS

- Maximum Operating Pressure : 7200 psig (500 barg) @ 70°F (21°C)
- Operating Temperature Range : -4°F (-20°C) to 210°F (100°C)

Refer to H-115BV

T Series Trunnion Ball Valves



APPLICATIONS

Instrument Air lines,
CNG dispensing
Sampling System

FEATURES

2-way or 3-way designs
Stainless Steel, Alloy 400(Monel)
Trunnion bearings eliminate galling
Spring loaded ball Seats
PCTFE seats

SPECIFICATIONS

- Maximum Operating Pressure : 10000 psig (689 barg) @ 70°F (21°C)
- Operating Temperature Range : 0°F (-17°C) to 250°F (121°C)

Refer to H-100TBV

SO Series Swing Out Ball Valves



APPLICATIONS

Instrument Air lines
Chemical Processing
Oil & Gas Production

FEATURES

In-line pattern
Stainless Steel, CF8M
Long life cycle
Easy swing out construction
Anti-static device Locking device
Fire safety designed to API 607, BS 6755 Part 2

SPECIFICATIONS

- Maximum Operating Pressure : 3000 psig (207 barg) @ 100°F (38°C)
- Operating Temperature Range : -20°F (-28°C) to 450°F (232°C)

Refer to H-SOBV

P Series Plug Valves



APPLICATIONS

Instrument Air lines,
Sampling System
Pilot plant

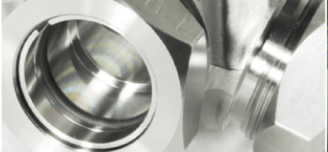
FEATURES

In-line pattern
Stainless Steel, Brass,
Alloy 400(Monel)
Throttling capability
Easy replacement of plug and O-ring
Viton O-Ring seats / Seals

SPECIFICATIONS

- Maximum Operating Pressure : 3000 psig (207 barg) @ 700°F (21°C)
- Operating Temperature Range : -10°F (-23°C) to 400°F (204°C)

Refer to H-P100



700 & CVA Series Check Valves

APPLICATIONS

Instrument lines,
Sampling System

FEATURES

In-line pattern
Stainless steel, Brass, Alloy 400(Monel)
Poppet design
Viton O-ring seats/seals
Provide large flows

SPECIFICATIONS

• Maximum Operating Pressure :
30000psig (207 barg) @ 70°F (21°C)
• Operating Temperature Range :
-10°F (-23°C) to 375°F (191°C)

Refer to H-700CV & H-700ACV



700H Series High Pressure Compact Check Valves

APPLICATIONS

Prevent reversed flow
Low pressure In-line relief valve
Vent valve to purge system

FEATURES

In-line pattern
Stainless Steel, Brass, Alloy 400(Monel)
Poppet design
Provide large flows
Minimum of chatter and fluctuation
Viton O-ring seats / Seals

SPECIFICATIONS

• Maximum Operating Pressure :
6000 psig (413 barg) @ 70°F (21°C)
• Operating Temperature Range :
-10°F (-23°C) to 400°F (204°C)
• Opening Pressure :
1/3 psig (0.02 barg) to 25 psig (1.7 barg)

Refer to H-700HCV



RV Series Relief Valves

APPLICATIONS

Prevent over pressure to protect
regulators or pump

FEATURES

Angle pattern
Stainless Steel
External relief setting
Provide large flows

SPECIFICATIONS

• Maximum Operating Pressure :
RV1 : 300 psig (207 barg) @ 70°F (21°C)
RV2 : 6000 psig (413 barg) @ 70°F (21°C)
• Operating Temperature Range :
-10°F (-23°C) to 400°F (204°C)
• Opening Pressure :
RV1 : 10 psig (0.69 barg) to 250 psig (17.25 barg)
RV2 : 250 psig (17.5 barg) to 6000 psig (413 barg)

Refer to H-RV100



CRYO Series Needle & Ball Valves

APPLICATIONS

Cryogenic service, LNG/LPG
Liquefied Nitrogen

FEATURES

In-line pattern
Stainless Steel
Easy maintenance of in-line elements
Dust cap functions as position
indicator as well
Bolted extension bonnet
Fire safety designed to API 607/6FA,
BS 6755 Part 2

SPECIFICATIONS

• Maximum Operating Pressure :
750 psig (52 barg) @ 100°F (38°C)
• Operating Temperature Range :
-320°F (-196°C) to 700°F (371°C)

Refer to H-CRYO100



FI Series Micron In-Line Filters

APPLICATIONS

Particle trapping

FEATURES

In-line pattern
Stainless Steel, Brass
Compact in-line design
Easy replacement
of filter elements

SPECIFICATIONS

• Maximum Operating Pressure :
3000 psig (207 barg) @ 70°F (21°C)
• Operating Temperature Range :
-10°F (-23°C) to 400°F (204°C)
• Filtering range : 1 to 150 Micron

Refer to H-F100



FT Series Micron Tee Filters

APPLICATIONS

Trap foreign particles,
Protect sensitive
equipment, Sampling system

FEATURES

Tee pattern
Stainless Steel, Brass
Easy replacement of filter elements
Available by-pass
Provided purging and sampling

SPECIFICATIONS

• Maximum Operating Pressure :
6000 psig (413 barg) @ 70°F (21°C)
• Operating Temperature Range :
-10°F (-23°C) to 400°F (204°C)
• Filtering range : 1 to 150 Micron

Refer to H-F200





BL Series Bellows Valves



APPLICATIONS

Semiconductor,
Biotech, Pharmaceutical

FEATURES

2-way Design
316L VOD Stainless Steel
Metal bellows seal
Long life cycle
PCTFE seats

SPECIFICATIONS

- Maximum Operating Pressure : 500 psig (34.4 barg) @70°F (21°C)
- Operating Temperature Range : -20°F (-28°C) to 200°F (93 °C)

Refer to H-BL100

DV Series Diaphragm Valves



APPLICATIONS

Semiconductor,
Biotech, Pharmaceutical

FEATURES

Metal to metal diaphragm seal
Low particle entrapment
100% helium leak tested
10 Ra or 5 Ra microinch internal surface

SPECIFICATIONS

- Maximum Operating Pressure : 3000 psig (207 barg) and 600psig (17.2barg)
- Operating Temperature Range : -10°F (-23°C) to 150°F (65°C)

Refer to H-DV100

Ultra-High Purity Point-of Use Regulator



APPLICATIONS

Semiconductor, Research Labs

FEATURES

Point-of-use
Free poppet/ Tied diaphragm type
10 Ra or 5 Ra microinch internal surface
Metal to metal body to diaphragm seal
Low Particle entrapment

SPECIFICATIONS

- Maximum Inlet Pressure : 600psig (41 barg) and 3500psig (241barg)
- Outlet Pressure Range : 1-30psig, 1-60psig, 1-100psig, 1-150psig, 1-250psig (1-2.1 barg),(1~4.2barg),(1-7.0barg), (1-10.5barg) (1-17.5barg)
- Operating Temperature Range : -40°F (-40°C) to 350°F (177°C)

Refer to H-HPGR400S

All Welded Check Valves



APPLICATIONS

Semiconductor
Biotech
Pharmaceutical
Ultra Pure, Flammable or Toxic Fluid Line

FEATURES

All welded design
316L VOD Stainless Steel
Compact Design
Low particle entrapment

SPECIFICATIONS

- Maximum Operating Pressure : 3000psig (210 barg) @ 100°F (38°C)
- Operating Temperature Range : -10°F (-23°C) to 400°F (205°C)
- Cracking Pressure : Less than 2 psig

Refer to H-CW100

Double Block & Bleed Valves



APPLICATIONS

Primary isolation, Sampling,
Chemical injection

FEATURES

Two ball One needle (OS & Y)
Stainless Steel, Duplex, A105
Savings on space, weight,
installation and cost
Increased safety
Easy installation and maintenance
PEEK or PCTFE seats
Fire safety designed to API 607/6FA

SPECIFICATIONS

- Maximum Operating Pressure : Class 2500 (6000 psig) @ 100°F (38°C)
- Operating Temperature Range : PEEK Seat : -65°F (-54°C) to 400°F (204°C)
PCTFE Seat : -22°F (-30°C) to 356°F (180°C)

Refer to H-100PIV

I 16 Series : SAE Flanged Ball Valves

APPLICATIONS

Hydraulic system, Fire fighting system

FEATURES

In-line pattern
Stainless Steel, A105
Compact design
POM-MoS2 seats
Fire safety designed to API 607,
BS 6755 Part 2
Locking device available

SPECIFICATIONS

- Maximum Operating Pressure : 6000 psig (413 barg) @ 100°F (38°C)
- Operating Temperature Range : -4°F (-20°C) to 210°F (100°C)



I 18 Series : ANSI Flanged Ball Valves

APPLICATIONS

Hydraulic system, Chemical plant

FEATURES

In-line pattern
Stainless Steel, Duplex, A105
POM-MoS2 or PCTFE seats
Fire safety designed to API 607,
BS 6755 Part 2
Locking device available

SPECIFICATIONS

- Maximum Operating Pressure : Class 2500 (6000 psig) @ 100°F (38°C)
- Operating Temperature Range : -4°F (-20°C) to 210°F (100°C)





Service Network Available



www.hy-lok.com



Quality System Certifications

Certifications	Certificates No. / Issued by
ISO 9001	GQC 212/ASME
ISO 14001	EMS 85841/BSI
OHSAS 18001	OHS 85842/BSI
ASME QSC	QSC-584/ASME
PED-97/23/EC	01 202 ROK/Q-02 0017/TÜV
KEPIC MN	MN-193/KEA
API Q1 & 6D	6D-0389/API

Acquired Certifications for CNG Application

ECE R110 / ISO 15500
 ANSI / AGA NGV1, 1a 1b / CGA NGV 1-M94, 1a-M97, 1b-M98
 ANSI / AGA NGV3.1 CGA NGV 12.3-M95
 ANSI / AGA NGV3.1 CGA NGV 12.3-M95



Distributed by :



PG Flowteknik Scandinavia ApS
 Rugvænget 19c
 2630 Taastrup
 tlf.: 7384 1230
WWW.PGFlowteknik.dk