

Eaton X3 two-speed plug-in motor



Small package, flexible features, improved value

The X3 plug-in motor offers best-in-class value with its performance, compact package, reliable life and ease of drop-in capability.

The Eaton X3 plug-in motor offers a simple design made for mobile applications where compact packaging is critical. Featuring a two-speed operating range in 41cc and 49cc displacements, the X3 motor is ready for mid-frame machines that need performance with an attractive value proposition.

With an array of flexible features, the X3 motor can adapt quickly to most mobile machines within its rated operating conditions.

Features and benefits:

Small size, superior value

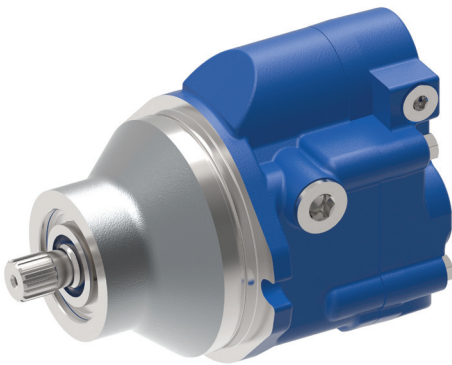
- 41cc and 49cc displacements
- Competitive packaging in its class
- Simple design with proven results

Effortless upgrade

- Plug-in SAE B two-bolt mount
- Drop in to standard planetary gear boxes
- Rear packaging fits through 7-inch machine pilot

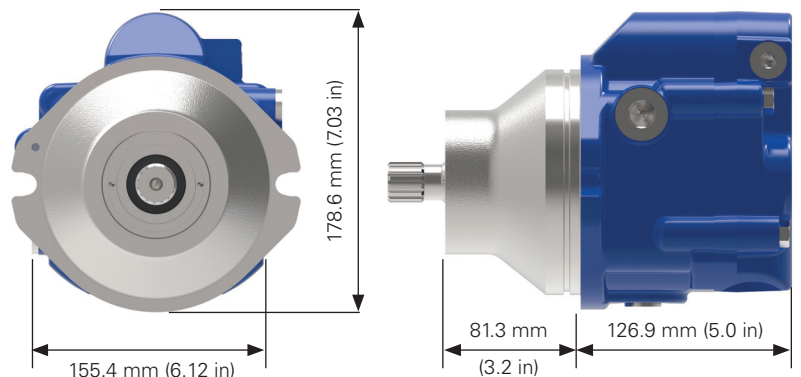
Versatile design, flexible features

- Speed and direction sensor ready (44 pulse)
- Integrated shuttle/flushing valves
- Anti-cavitation valve option available

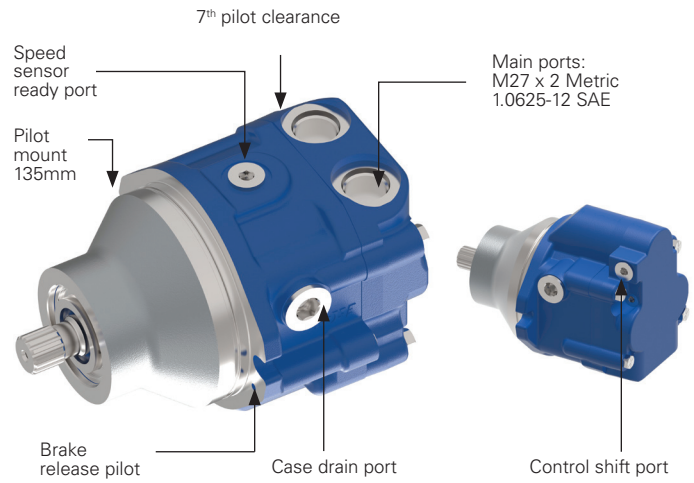
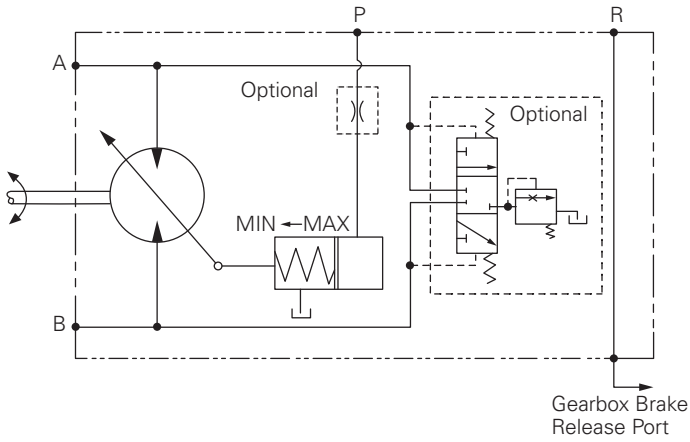


EATON

Powering Business Worldwide

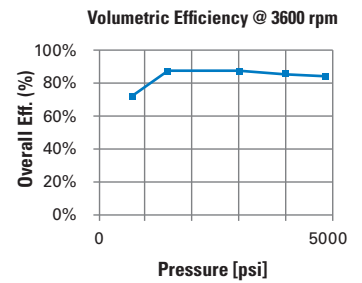
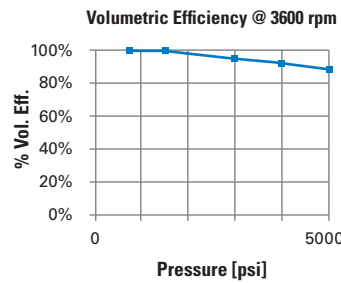
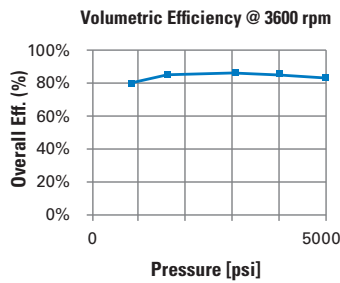
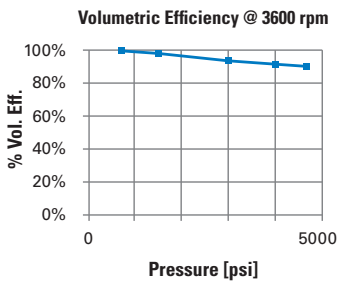


Dimensions in mm (inch)



41cc motor efficiency

49cc motor efficiency



Technical specifications

Parameter	Unit	Model 374AKXXXXXA (41cc)	Model 374AKXXXXXA (49cc)
Displacement	cm ³ /r [in ³ /r]	40.6 [2.48]	49.2 [3.00]
Maximum displacement	cm ³ /r [in ³ /r]	32.0 to 40.6 [1.95 to 2.48]	43.3 to 49.2 [2.64 to 3.00]
Minimum displacement	cm ³ /r [in ³ /r]	7.4 [0.45], 10 [0.61], 13 [0.79], 17 [1.037], 20.5 [1.25]	16.30 [0.99], 20 [1.22], 22 [1.36], 26 [1.58], 29 [1.77], 32 [1.95]
Maximum rated speed at maximum displacement	rpm	3500	3500
Maximum rated speed at minimum displacement	rpm	4500	4500
Nominal pressure rating *	bar [psi]	350 [5076]	310 [4500]
Peak pressure rating **	bar [psi]	380 [5500]	345 [5000]
Output torque (theoretical)	N-m/bar [lbf-in/1000 psi]	0.65 [394]	0.79 [480]
Shift pressure range	bar [psi]	15-69 [220 to 1000]	15-69 [220 to 1000]

Note: * Nominal pressure: Max. delta system pressure at which component fatigue does not occur (motor life estimated by bearing life)
 ** Peak pressure: Max. operating pressure which is permissible for a short duration of time [t<1 sec]

Eaton
 1000 Eaton Boulevard
 Cleveland, OH 44122
 United States
 Eaton.com

© 2020 Eaton
 All Rights Reserved
 Printed in USA
 Publication No. E-MOPI-BB006-E
 March 2020

Eaton is a registered trademark.

All other trademarks are property of their respective owners.

Follow us on social media to get the latest product and support information.



Contacts

Product Manager Americas
 Brent Schenk
 Tel: +1 952 937 7206
 BrentDSchenk@eaton.com

Product Manager EMEA
 Bartosz Buniowski
 Tel: +48 694 430 935
 BartoszPBuniowski@eaton.com

Product Manager APAC
 Stain Wang
 Tel: +86 21 22307127
 StainWang@Eaton.com