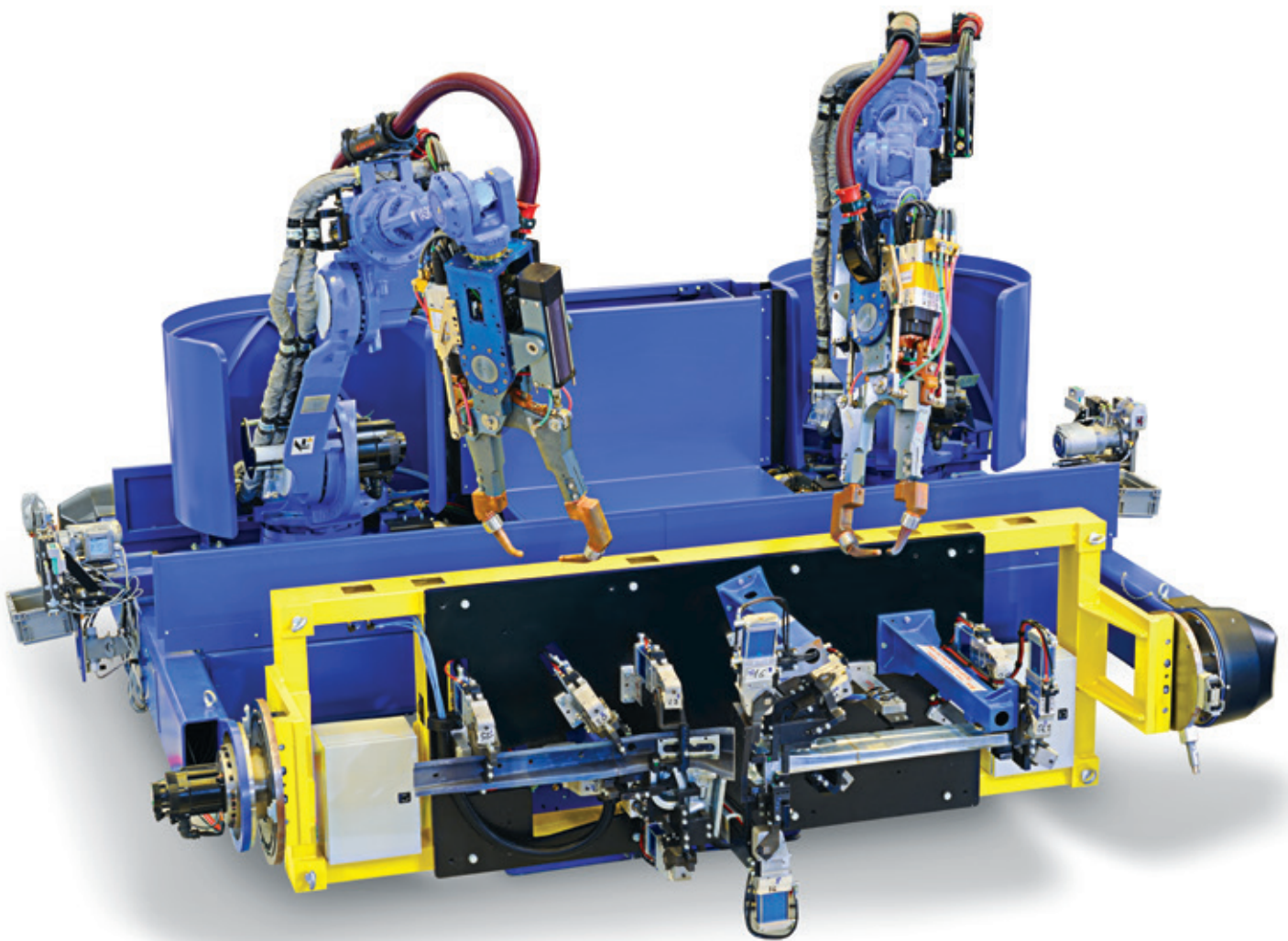


YASKAWA

SPOT WELDING SYSTEMS

Industrial process



FROM ROBOT TO PROCESS

The success of an idea comes from an approach that undermines tradition.

Yaskawa took the opportunity to see beyond the robot, being sure of the high quality of the product, and create a complete spot welding solution.

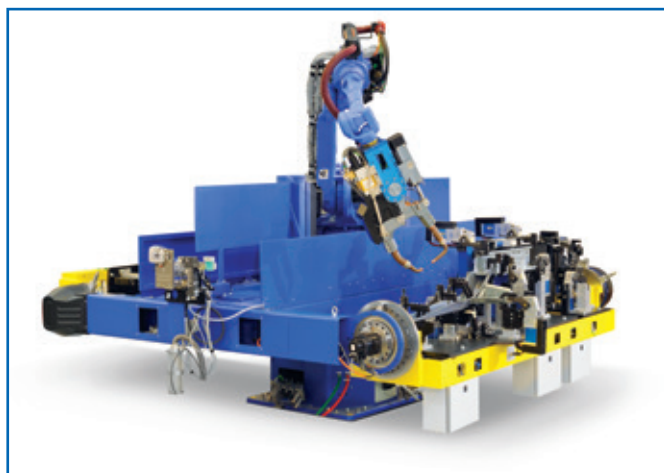
The corporate know-how has put the company fully revamped on the Automotive market. Today, Yaskawa is able to design, build, install and service robotized lines that meet the highest standards in terms of technology and innovation.

TURNKEY PROCESS

- Analysis of the specifications.
- Pre-design and drafting of the proposal.
- Simulation and Layout of the solution.
- Traceability and Lean Manufacturing.
- Short-time production.
- Line assembly and installation.
- Testing and Inspection.
- Maintenance and spare parts in time and worldwide.

BENEFITS

- **Compact solution**, save space up to 40%.
- **Improved accessibility** to the parts to be welded.
- **Easy to move**, consists of a single block.
- **Easy to install**, no re-teach on site.
- **Reduced set-up by the customer**, no re-teach on site.
- **Easy to program**, ergonomic position for the operator.
- **Flexible concept** - 0-100 versatility from one product to another.
- **Robot on board in a frontal position**, you can easily unload the item without interference.
- **Faster than ever**, save cycle time.



SPOT WELDING ROBOTS - THE BEST SELLING AND MOST DEMANDED ROBOTS

VS SERIES

MS SERIES



VS50



VS100



MS80II



MS165



MS210

DRESSING KIT



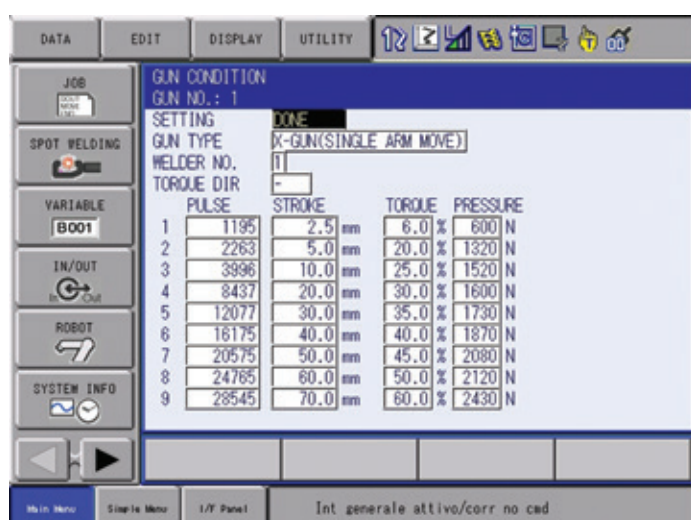
- Spot Welding gun wiring from robot base to wrist - 35mm² power cord, water pipe PUR 12, motor, encoder, signal cables.
- Spot Welding connection from robot base to DX200 controller (length 10 metres) - 2 pipes PUR 12, power cord 35mm².

WELDING CABINET



- MF inverter with 36 kA for water-cooling.
- Auto-Adaptive SD card (optional).
- Profibus or Profinet card.
- Ethernet card.
- Cabinet h = 600 mm.
- Main switch 160A.
- Power contactor.
- Contactor and switch kit for dressing unit control.
- 24VDC power supply.

YASKAWA MOTORGUN SOFTWARE



Communication software for the welding timer and the gun motor guarantees a high quality welding process due to integration and complete dialogue between all items managed as a unique Yaskawa brand product.

- Easy to set up: a few steps to configure communication with the welding timer.
- Easy to set calibration, configuration page dedicated to calibration of gun and motor.
- Contains functions that enable self-learning.

YASKAWA

YASKAWA Headquarters

YASKAWA Europe GmbH
Robotics Division
Yaskawastraße 1
D-85391 Allershausen
Tel. +49 (0) 8166/90-0
Fax +49 (0) 8166/90-103

YASKAWA academy and sales office Frankfurt

YASKAWA Europe GmbH
Robotics Division
Hauptstraße 185
D-65760 Eschborn
Tel. +49 (0) 6196/77725-0
Fax +49 (0) 6196/77725-39

YASKAWA GROUP

- A YASKAWA Austria**
Schwechat/Wien
+43(0)1-707-9324-15
- CZ YASKAWA Czech s.r.o.**
Rudná u Prahy
+420-257-941-718
- E YASKAWA Ibérica, S.L.**
Gavà/Barcelona
+34-93-6303478
- F YASKAWA France SARL**
Saint-Aignan-de-Grand-Lieu
+33-2-40131-919
- FIN YASKAWA Finland Oy**
Turku
+358-(0)-403000-600
- GB YASKAWA UK Ltd.**
Banbury
+44-1295-272755
- I YASKAWA Italia s.r.l.**
Torino
+39-011-9005-833
- IL YASKAWA Europe Technology Ltd.**
Rosh Ha'ayin
+972-3-9004114
- NL YASKAWA Benelux B.V.**
EB Son
+31-40-2895-500
- PL YASKAWA Polska Sp. z o.o.**
Wrocław
+48-71-7928-670
- RUS YASKAWA Nordic AB**
Moskva
+46-480-417-800
- SE YASKAWA Nordic AB**
Torsås
+46-480-417-800
- SI YASKAWA Slovenia**
Ribnica
+386-1-8372-410
- TR YASKAWA Turkey Elektrik**
Ticaret Ltd. Sti.
Istanbul +90-216-5273-450
- ZA YASKAWA Southern Africa (PTY) Ltd**
Johannesburg
+27-11-6083-182

DISTRIBUTORS

- BG Kammarton Bulgaria Ltd.**
Sofia
+359-02-926-6060
- CH Messer Eutectic Castolin**
Switzerland S.A.
Dällikon +41-44-847-17-17
- DK Robotcenter Danmark**
Løsning
+45 7022-2477
- EE RKR Seadmed OÜ**
Tallinn/Estonia
+372-68-35-235
- GR Gizelis Robotics**
Nea Kifissia
+30-210-6251-455
- H Flexman Robotics Kft**
Budapest
+36-30-9510-065
- LT Profibus UAB**
Panevezys
+370-45-518575
- N Skala Robotech AS**
Lierstranda
+47-32240-600
- PT ROBOPLAN Lda**
Aveiro
+351-23-4943-900
- RO Sam Robotics srl**
Timisoara
+40-720-279-866
- RO MPL Automation S.R.L.**
Satu Mare
+40 (0) 26-1750-741

