

**Pressure Tech**  
**LF 540 regulator**  
Low-flow  
Pressure Regulator



# LF540 Datasheet

## LOW-FLOW PRESSURE REGULATOR



☒ Gas ☒ Liquid | ☒ Diaphragm ☒ Piston | ☒ Self-Venting ☒ Non-Venting | Max Inlet: 690 bar (10,000 psi) | Max Outlet: 414 bar (6,000 psi) | Cv 0.1



### INTRODUCING THE LF540...

The LF540 is a compact and economical piston-sensed, low-flow regulator with precision machined sensing elements to allow fine pressure control up to 414 bar (6,000 psi).

Its load bearings and large handwheel offer low torque adjustment, and the LF540 can be supplied as non-venting or self-venting, non-captured (on gas only).

Please Note: Cv 0.3 is only available as non-venting.

### SPECIFICATION

Max. Rated Inlet Pressure	690 bar (10,000 psi)
Outlet Ranges	Up to 414 bar (6,000 psi)
Design Proof Pressure	150% max. working pressure
Seat Leakage	In accordance with ANSI/FCI 70-3
Weight	2.3kg (5lbs)

### STANDARD MATERIALS OF CONSTRUCTION

PART	MATERIALS
Body and Bonnet	ASTM A479 316/316L Stainless Steel (UNS S31600/S31603)
Main Valve Pin	ASTM A479 316/316L Stainless Steel
Soft Seat	PEEK™ (450G)
Valve Spring	ASTM A479 S42 Stainless Steel (UNS S43100)
Piston	ASTM A479 316/316L Stainless Steel
Handwheel	Nylon
O-Rings	FKM/FPM (Viton)
Loading Spring	Silicon Chrome Wire
Filter	40 Microns

Note: Pressure regulator rating may be limited by connection type, Cv and/or seat material. Contact the office for specific pressure or temperature requirements.

### FEATURES AND BENEFITS

#### 1 PISTON SENSING ELEMENT

Perfect for use in challenging conditions.

#### 2 PRECISION MACHINED SENSING ELEMENT

For accurate pressure control.

#### 3 COMPACT DESIGN

Perfect for when installation space is restricted.

#### 4 SELF-VENTING OR NON-VENTING

Versatile use for a wide range of applications.

Product availability and specifications contained herein are subject to change without notice. Consult local distributor or factory for potential revisions and/or service related issues. Pressure Tech Ltd support with product selection recommendations only - it is the users responsibility to ensure the product is suitable for their specific application requirements.



#### PRESSURE TECH LTD

Unit 24, Graphite Way, Hadfield, Glossop, Derbyshire, UK, SK13 1QH

+44 (0)1457 899 307 | [sales@pressure-tech.com](mailto:sales@pressure-tech.com) | [www.pressure-tech.com](http://www.pressure-tech.com)

DESIGNED, MANUFACTURED AND BUILT IN THE UK

© 2025 Pressure Tech Ltd. All Rights Reserved.

200325

PAGE:  
1 OF 4

# LF540 Datasheet

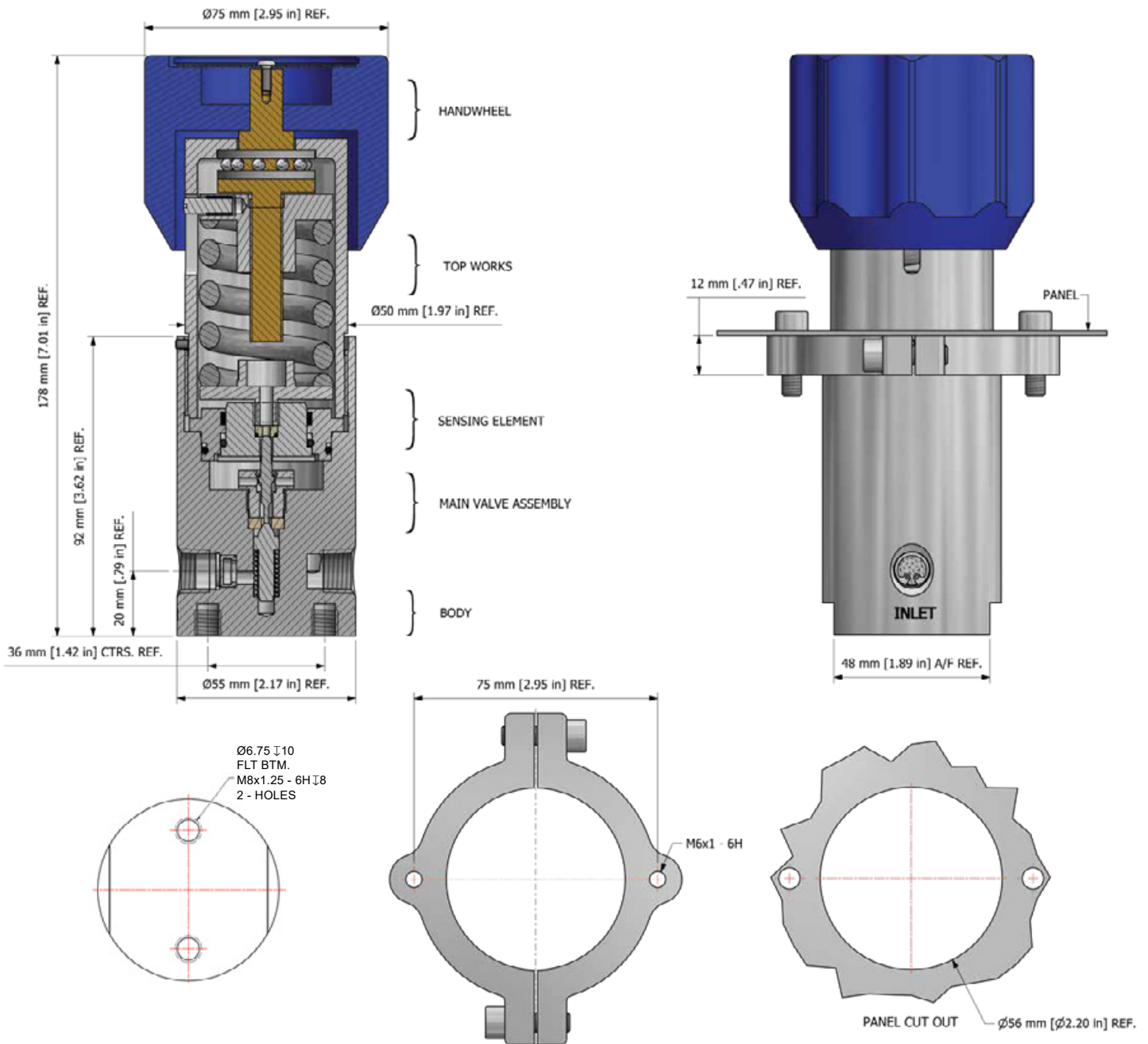
## LOW-FLOW PRESSURE REGULATOR



● Gas
● Liquid
● Diaphragm
● Piston
● Self-Venting
● Non-Venting
Max Inlet: 690 bar (10,000 psi)
Max Outlet: 414 bar (6,000 psi)
Cv 0.1

### DRAWINGS AND INSTALLATION DIMENSIONS

Dimensions shown for 1/4" NPT option and standard configurations only - please contact the office for other options.



**Note:**  
All gauge ports are 1/4" NPT as standard.

PT-C-061-005-RING (STAINLESS STEEL)  
PT-C-061-005-001-RING (ALUMINIUM)  
PANEL MOUNT RING

Product availability and specifications contained herein are subject to change without notice. Consult local distributor or factory for potential revisions and/or service related issues. Pressure Tech Ltd support with product selection recommendations only - it is the users responsibility to ensure the product is suitable for their specific application requirements.



#### PRESSURE TECH LTD

Unit 24, Graphite Way, Hadfield, Glossop, Derbyshire, UK, SK13 1QH

+44 (0)1457 899 307 | [sales@pressure-tech.com](mailto:sales@pressure-tech.com) | [www.pressure-tech.com](http://www.pressure-tech.com)

DESIGNED, MANUFACTURED AND BUILT IN THE UK

© 2025 Pressure Tech Ltd. All Rights Reserved.

200325

PAGE:  
2 OF 4

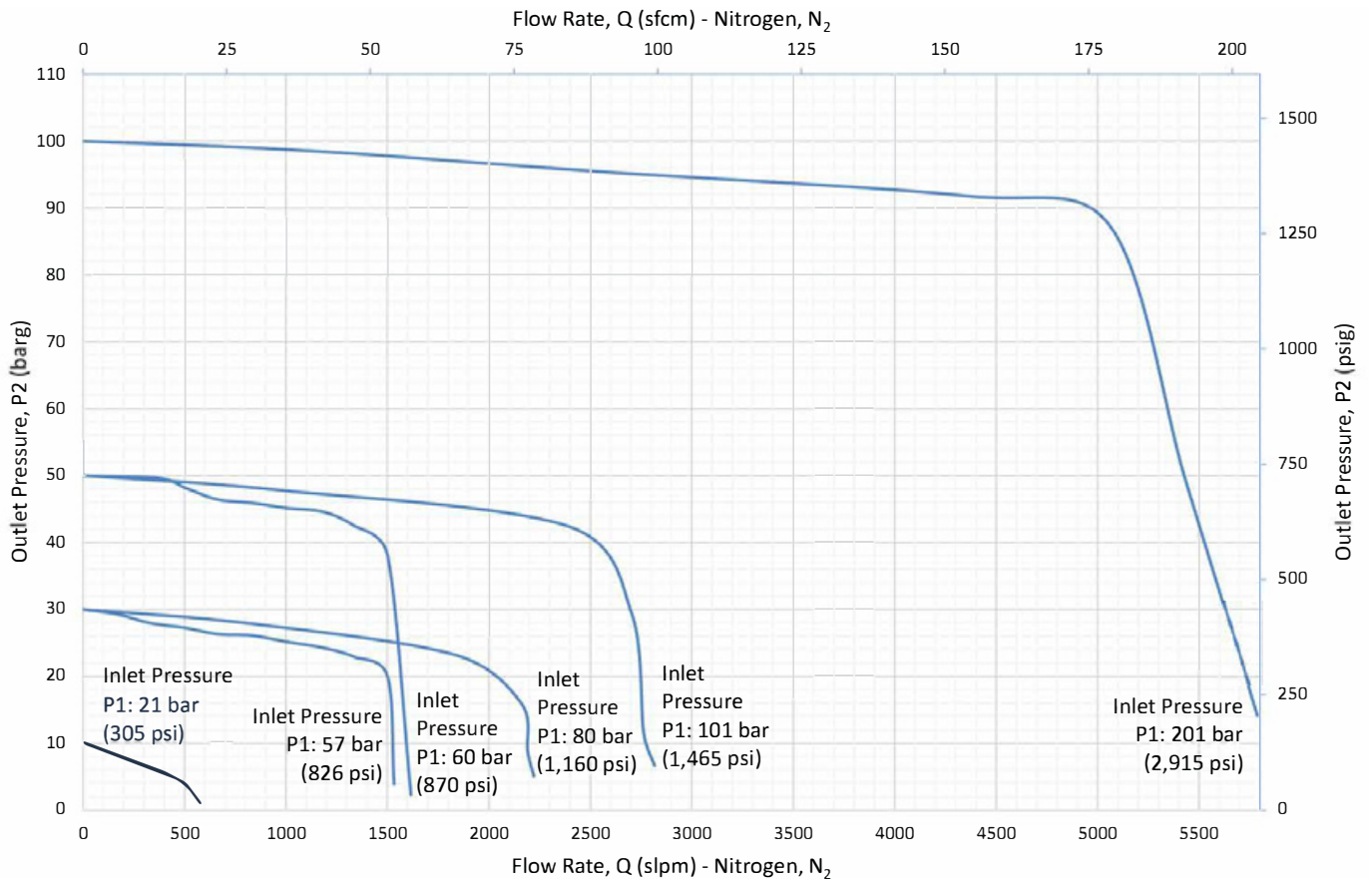
# LF540 Datasheet

## LOW-FLOW PRESSURE REGULATOR

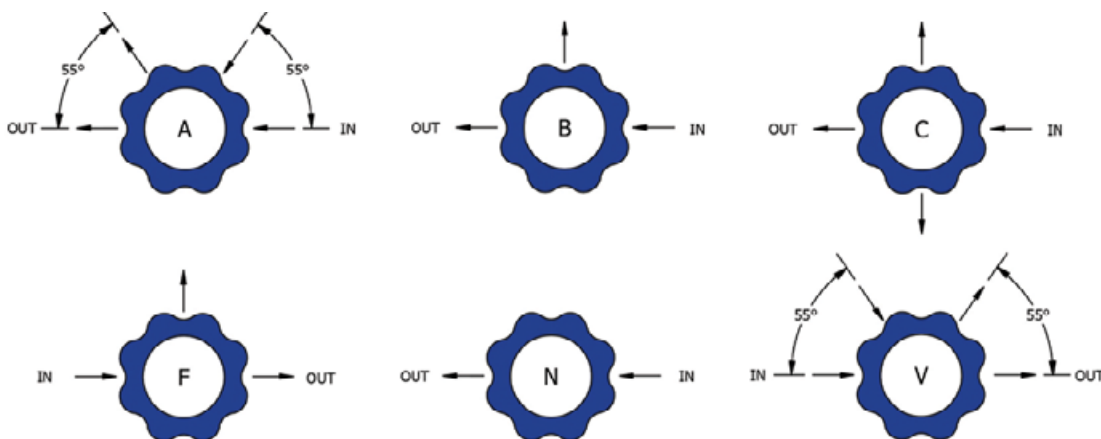


☒ Gas 
 ☒ Liquid 
 ☒ Diaphragm 
 ☒ Piston 
 ☒ Self-Venting 
 ☒ Non-Venting 
 Max Inlet: 690 bar (10,000 psi) 
 Max Outlet: 414 bar (6,000 psi) 
 Cv 0.1

### FLOW CURVE



### PORTING CONFIGURATIONS



#### Note:

Additional porting configurations are available - please contact the office for further information.

Product availability and specifications contained herein are subject to change without notice. Consult local distributor or factory for potential revisions and/or service related issues. Pressure Tech Ltd support with product selection recommendations only - it is the users responsibility to ensure the product is suitable for their specific application requirements.



#### PRESSURE TECH LTD

Unit 24, Graphite Way, Hadfield, Glossop, Derbyshire, UK, SK13 1QH

+44 (0)1457 899 307 | [sales@pressure-tech.com](mailto:sales@pressure-tech.com) | [www.pressure-tech.com](http://www.pressure-tech.com)

DESIGNED, MANUFACTURED AND BUILT IN THE UK

© 2025 Pressure Tech Ltd. All Rights Reserved.

200325

PAGE:  
3 OF 4

# LF540 Datasheet

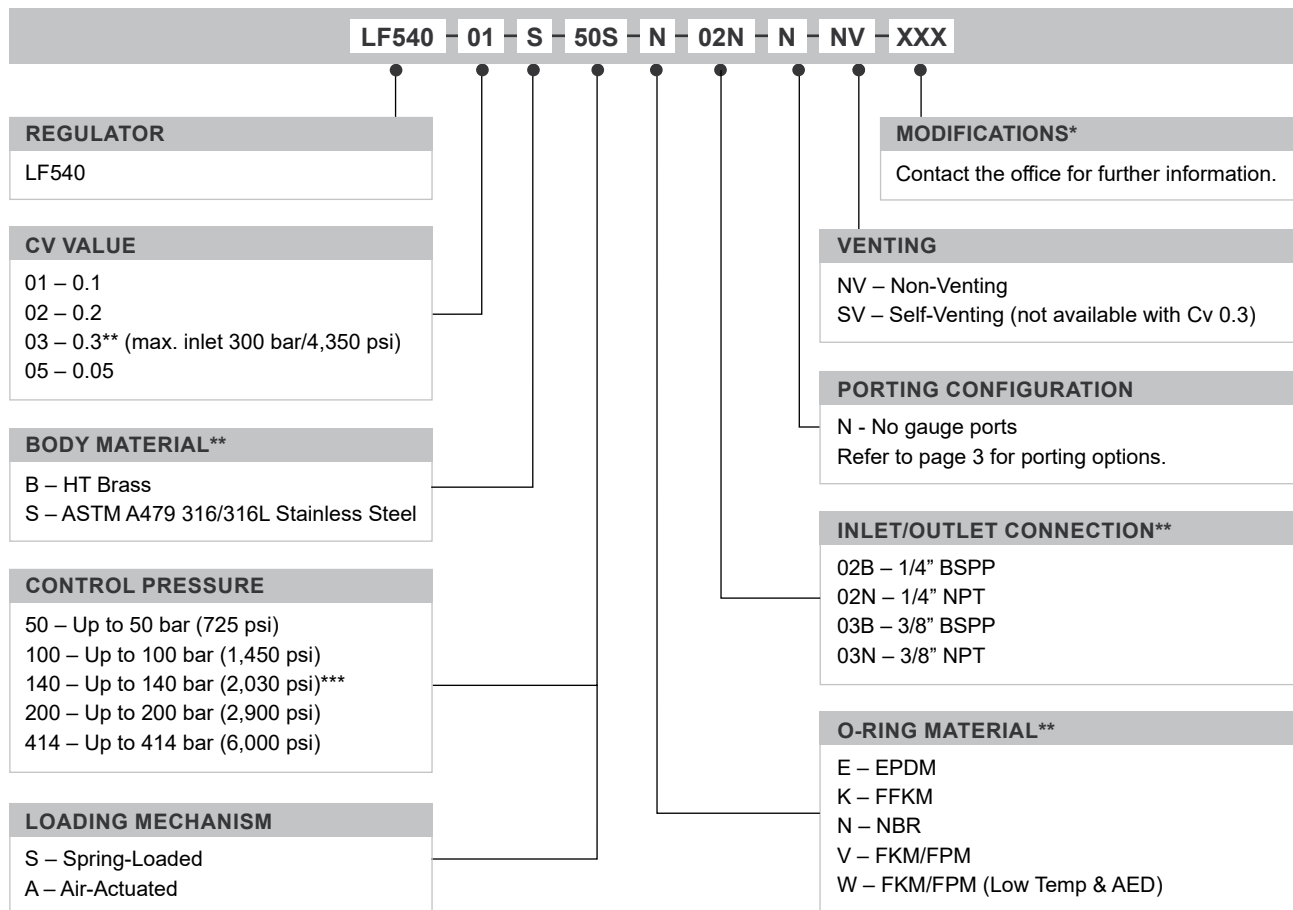
LOW-FLOW PRESSURE REGULATOR



● Gas ● Liquid | ● Diaphragm ● Piston | ● Self-Venting ● Non-Venting | Max Inlet: 690 bar (10,000 psi) | Max Outlet: 414 bar (6,000 psi) | Cv 0.1

## ORDERING INFORMATION

To build a Pressure Tech part number, simply combine the characters identified below in sequence:



## OPTIONAL EXTRAS

	PART NUMBER	DESCRIPTION
Service Kit	SRK-LF540...	Various options available
Panel Mounting Ring	PT-C-061-005-RING	Stainless Steel panel mount ring
Panel Mounting Ring	PT-C-061-005-001-RING	Aluminium panel mount ring

Note: Ancillary equipment also available

TRADEMARKS: PEEK™ is a trademark of Victrex PLC

\* Where applicable

\*\* Other connections/materials may be available

\*\*\* Air-loaded only

Product availability and specifications contained herein are subject to change without notice. Consult local distributor or factory for potential revisions and/or service related issues.  
Pressure Tech Ltd support with product selection recommendations only - it is the users responsibility to ensure the product is suitable for their specific application requirements.



### PRESSURE TECH LTD

Unit 24, Graphite Way, Hadfield, Glossop, Derbyshire, UK, SK13 1QH

+44 (0)1457 899 307 | [sales@pressure-tech.com](mailto:sales@pressure-tech.com) | [www.pressure-tech.com](http://www.pressure-tech.com)

DESIGNED, MANUFACTURED AND BUILT IN THE UK

© 2025 Pressure Tech Ltd. All Rights Reserved.

200325

PAGE:  
4 OF 4



Metalgangen 13  
DK-2690 Karlslunde  
Danmark  
+(45) 73 84 12 30  
[info@pgflowteknik.dk](mailto:info@pgflowteknik.dk)  
[www.pgflowteknik.dk](http://www.pgflowteknik.dk)  
CVR 3146 9090